

9/15/2016

Membership Statistics: Grand totals for basic membership, by member type and country

		<u># Memberships</u>	<u># Members</u>
IND	BASIC		
	Existing Member(s)	4,466	4,466
	New as of 8/1/2016 or later	34	34
IND	BASIC	4,500	4,500

IND2	BASIC		
	Existing Member(s)	2,044	2,044
	New as of 8/1/2016 or later	12	12
IND2	BASIC	2,056	2,056

STU	BASIC		
	Existing Member(s)	917	917
	New as of 8/1/2016 or later	24	24
STU	BASIC	941	941

STU2	BASIC		
	Existing Member(s)	401	401
	New as of 8/1/2016 or later	12	12
STU2	BASIC	413	413

LIF	BASIC		
	Existing Member(s)	51	51
LIF	BASIC	51	51

RET	BASIC		
	Existing Member(s)	148	148
	New as of 8/1/2016 or later	1	1
RET	BASIC	149	149

RET2	BASIC		
	Existing Member(s)	114	114
RET2	BASIC	114	114

PTR	BASIC		
	Existing Member(s)	452	452
	New as of 8/1/2016 or later	6	6
PTR	BASIC	458	458

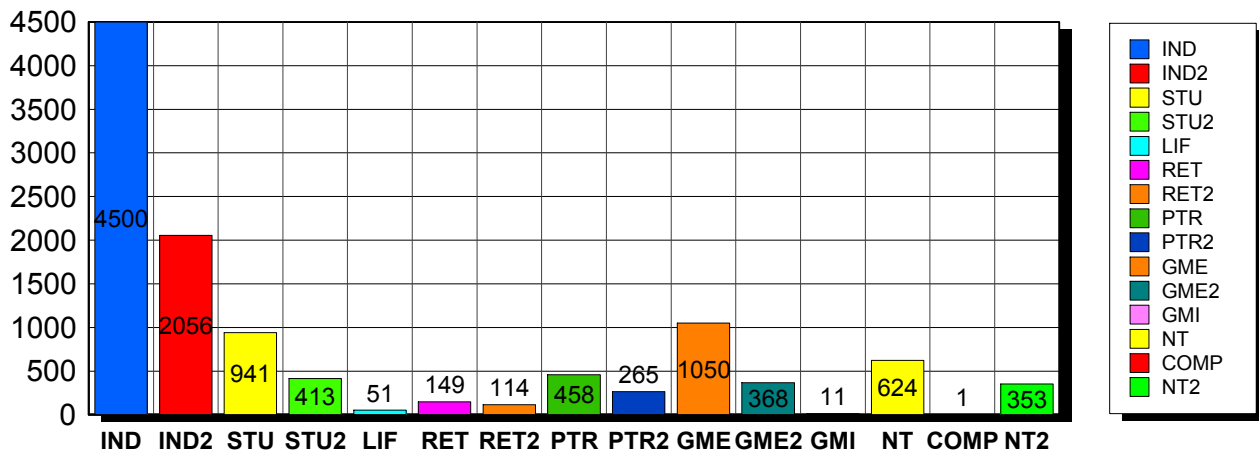
PTR2	BASIC		
	Existing Member(s)	264	264
	New as of 8/1/2016 or later	1	1
PTR2	BASIC	265	265

GME	BASIC		
	Existing Member(s)	1,029	1,029
	New as of 8/1/2016 or later	21	21
GME	BASIC	1,050	1,050

GME2	BASIC		
	Existing Member(s)	367	367
	New as of 8/1/2016 or later	1	1
GME2	BASIC	368	368

GMI	BASIC		
	Existing Member(s)	11	11
GMI	BASIC	11	11
<hr/>			
NT	BASIC		
	Existing Member(s)	606	606
	New as of 8/1/2016 or later	18	18
NT	BASIC	624	624
<hr/>			
COMP	BASIC		
	Existing Member(s)	1	1
COMP	BASIC	1	1
<hr/>			
NT2	BASIC		
	Existing Member(s)	344	344
	New as of 8/1/2016 or later	9	9
NT2	BASIC	353	353
<hr/>			
Grand Total:		11,354	11,354

Member Types



Note: in all general statistic reports, joint household memberships are treated as "one" member EXCEPT in the second column of this report, where joints are counted as two people, providing the most accurate count of the number of TESOL members.

		Existing Member(s)	New as of 8/1/2016 or later	Total
COMP	United States	1	0	1
	Total	1	0	1
GME	United States	35	0	35
	AFGHANISTAN	2	0	2
	ALBANIA	2	0	2
	ALGERIA	6	0	6

		Existing Member(s)	New as of 8/1/2016 or later	Total
GME	ARGENTINA	23	0	23
	ARMENIA	1	0	1
	AZERBAIJAN	6	0	6
	BAHRAIN	1	0	1
	BANGLADESH	14	0	14
	BELIZE	1	0	1
	BOLIVIA	17	0	17
	BOSNIA AND	1	0	1
	BRAZIL	61	1	62
	BULGARIA	3	0	3
	CAMBODIA	3	0	3
	CAMEROON	2	0	2
	CHILE	6	0	6
	CHINA	101	6	107
	COLOMBIA	16	0	16
	COMOROS	1	0	1
	COSTA RICA	15	0	15
	CROATIA	6	0	6
	CUBA	1	0	1
	DOMINICA	1	0	1
	DOMINICAN	17	0	17
	ECUADOR	81	0	81
	EGYPT	32	0	32
	EL SALVADOR	6	6	12
	GEORGIA	4	0	4
	GUATEMALA	14	0	14
	HAITI	10	0	10
	HONDURAS	5	0	5
	HONG KONG	1	0	1
	HUNGARY	3	0	3
INDIA	56	0	56	

		Existing Member(s)	New as of 8/1/2016 or later	Total
GME	INDONESIA	8	0	8
	IRAN	6	0	6
	IRAN, ISLAMIC	1	0	1
	IRAQ	3	0	3
	ISRAEL	1	0	1
	JAMAICA	1	0	1
	JAPAN	1	0	1
	JORDAN	4	0	4
	KAZAKHSTAN	1	0	1
	KOSOVO	1	0	1
	KYRGYZSTAN	1	0	1
	Lao People's	1	0	1
	LATVIA	1	0	1
	LEBANON	6	0	6
	MACEDONIA	1	0	1
	MADAGASCAR	2	0	2
	MALAYSIA	19	0	19
	MAURITANIA	2	0	2
	MEXICO	47	1	48
	MOLDOVA,	1	0	1
	MONGOLIA	4	0	4
	MOROCCO	30	0	30
	MYANMAR	2	0	2
	NEPAL	16	0	16
	NEW ZEALAND	1	0	1
	NICARAGUA	3	0	3
	NIGERIA	4	0	4
	NORWAY	1	0	1
	PAKISTAN	17	2	19
	PALESTINIAN	2	0	2
PANAMA	17	0	17	

		Existing Member(s)	New as of 8/1/2016 or later	Total
GME	PARAGUAY	3	0	3
	PEOPLES REP	24	0	24
	PERU	94	0	94
	PHILIPPINES	24	3	27
	POLAND	4	2	6
	ROMANIA	1	0	1
	RUSSIA	3	0	3
	RUSSIAN	9	0	9
	RWANDA	5	0	5
	SENEGAL	1	0	1
	SERBIA	5	0	5
	SOUTH AFRICA	1	0	1
	SRI LANKA	4	0	4
	SUDAN	1	0	1
	SWAZILAND	1	0	1
	SYRIAN ARAB	1	0	1
	TAIWAN	2	0	2
	TAIWAN ROC	1	0	1
	TANZANIA,	1	0	1
	THAILAND	14	0	14
	TUNISIA	2	0	2
	TURKEY	25	0	25
	UKRAINE	7	0	7
	UNITED	1	0	1
	URUGUAY	6	0	6
	VENEZUELA	23	0	23
VIET NAM	2	0	2	
VIETNAM	4	0	4	
YEMEN	1	0	1	
Total	1,029	21	1,050	
GME2	United States	8	0	8

		Existing Member(s)	New as of 8/1/2016 or later	Total
GME2	AFGHANISTAN	1	0	1
	ALBANIA	1	0	1
	ANGOLA	1	0	1
	ARGENTINA	6	0	6
	ARMENIA	1	0	1
	BANGLADESH	1	0	1
	BELARUS	1	0	1
	BENIN	2	0	2
	BOLIVIA	4	0	4
	BRAZIL	20	1	21
	BULGARIA	4	0	4
	BURKINA FASO	1	0	1
	CAMEROON	1	0	1
	CHILE	6	0	6
	CHINA	50	0	50
	COLOMBIA	12	0	12
	COSTA RICA	5	0	5
	DOMINICAN	8	0	8
	ECUADOR	17	0	17
	EGYPT	4	0	4
	GABON	2	0	2
	GEORGIA	1	0	1
	GRENADA	1	0	1
	GUATEMALA	1	0	1
	HONDURAS	1	0	1
	INDIA	22	0	22
	INDONESIA	3	0	3
	IRAQ	2	0	2
	JORDAN	3	0	3
	KAZAKHSTAN	5	0	5
LATVIA	2	0	2	

		Existing Member(s)	New as of 8/1/2016 or later	Total
GME2	LEBANON	3	0	3
	LITHUANIA	1	0	1
	MADAGASCAR	1	0	1
	MALAYSIA	7	0	7
	MAURITANIA	1	0	1
	MAURITIUS	1	0	1
	MEXICO	20	0	20
	MOLDOVA,	1	0	1
	MONGOLIA	7	0	7
	MOROCCO	3	0	3
	MOZAMBIQUE	1	0	1
	NAMIBIA	1	0	1
	NEPAL	5	0	5
	NIGER	1	0	1
	NIGERIA	5	0	5
	PAKISTAN	3	0	3
	PANAMA	2	0	2
	PARAGUAY	1	0	1
	PEOPLES REP	2	0	2
	PERU	8	0	8
	PHILIPPINES	6	0	6
	POLAND	6	0	6
	RUSSIA	3	0	3
	RUSSIAN	5	0	5
	SENEGAL	1	0	1
	SIERRA LEONE	1	0	1
	SRI LANKA	2	0	2
	TAIWAN ROC	3	0	3
	TAJIKISTAN	2	0	2
	THAILAND	17	0	17
TUNISIA	1	0	1	

		Existing Member(s)	New as of 8/1/2016 or later	Total
GME2	TURKEY	15	0	15
	UKRAINE	1	0	1
	UNITED	1	0	1
	United States	1	0	1
	URUGUAY	4	0	4
	UZBEKISTAN	19	0	19
	VENEZUELA	2	0	2
	VIET NAM	1	0	1
	VIETNAM	4	0	4
	YEMEN	1	0	1
	Total	367	1	368
GMI	BELARUS	1	0	1
	BRAZIL	2	0	2
	CHINA	2	0	2
	HUNGARY	1	0	1
	KOSOVO	1	0	1
	MEXICO	1	0	1
	PERU	3	0	3
	Total	11	0	11
IND	United States	3,924	27	3,951
	02453-2728	1	0	1
	ANGOLA	1	0	1
	ARGENTINA	1	0	1
	AUSTRALIA	14	1	15
	AUSTRIA	1	0	1
	BERMUDA	1	0	1
	BRAZIL	7	0	7
	CANADA	112	1	113
	CHILE	3	0	3
	CHINA	7	0	7
	CZECH	5	0	5

		Existing Member(s)	New as of 8/1/2016 or later	Total
IND	DENMARK	2	0	2
	ECUADOR	12	0	12
	EGYPT	3	0	3
	FINLAND	1	0	1
	FRANCE	4	0	4
	GERMANY	5	0	5
	GREECE	2	0	2
	HAITI	1	0	1
	HONG KONG	3	0	3
	HONG KONG	2	0	2
	HUNGARY	2	0	2
	INDIA	1	0	1
	IRAN	1	0	1
	IRAQ	1	0	1
	IRELAND	1	0	1
	ISRAEL	3	0	3
	ITALY	4	0	4
	JAPAN	170	1	171
	KAZAKHSTAN	1	0	1
	Korea, Republic	4	1	5
	KOREA,	1	0	1
	KOREA,	4	0	4
	KOSOVO	1	0	1
	KUWAIT	8	0	8
	LEBANON	1	0	1
	LIBYA	1	0	1
	MALAYSIA	1	0	1
MEXICO	3	0	3	
NETHERLAND	3	0	3	
NEW ZEALAND	5	0	5	
NIGERIA	1	0	1	

		Existing Member(s)	New as of 8/1/2016 or later	Total
IND	NORWAY	5	0	5
	OMAN	5	0	5
	PAKISTAN	1	0	1
	PARAGUAY	1	0	1
	PEOPLES REP	1	0	1
	PERU	5	0	5
	PORTUGAL	1	0	1
	QATAR	8	0	8
	SAUDI ARABIA	15	2	17
	SINGAPORE	4	0	4
	SLOVAKIA	1	0	1
	SOUTH AFRICA	2	0	2
	SOUTH KOREA	10	1	11
	SPAIN	4	0	4
	SWEDEN	6	0	6
	SWITZERLAND	1	0	1
	TAIWAN	7	0	7
	TAIWAN ROC	2	0	2
	THAILAND	4	0	4
	TRINIDAD AND	2	0	2
	UGANDA	1	0	1
	UNITED ARAB	22	0	22
	UNITED	12	0	12
	United States	8	0	8
	UNITED	4	0	4
	URUGUAY	1	0	1
	VANUATU	2	0	2
VIET NAM	1	0	1	
YEMEN	1	0	1	
Total	4,466	34	4,500	
IND2	United States	1,693	10	1,703

		Existing Member(s)	New as of 8/1/2016 or later	Total
IND2	AUSTRALIA	13	0	13
	AUSTRIA	2	0	2
	BAHRAIN	1	0	1
	BRAZIL	1	0	1
	CANADA	103	0	103
	CAYMAN	1	0	1
	CHILE	1	0	1
	CHINA	8	0	8
	COLOMBIA	2	0	2
	COSTA RICA	1	0	1
	CYPRUS	2	0	2
	DENMARK	1	0	1
	DOMINICA	0	1	1
	FINLAND	1	0	1
	FRANCE	1	0	1
	GERMANY	5	0	5
	HONG KONG	3	0	3
	HONG KONG	8	0	8
	INDIA	3	0	3
	INDONESIA	1	0	1
	IRAQ	1	0	1
	ITALY	4	0	4
	JAPAN	90	1	91
	Korea, Republic	1	0	1
	KOREA,	3	0	3
	KUWAIT	3	0	3
	Lao People's	1	0	1
	LUXEMBOURG	1	0	1
	MACAO	4	0	4
	MALAYSIA	2	0	2
MARTINIQUE	1	0	1	

		Existing Member(s)	New as of 8/1/2016 or later	Total
IND2	NEW	1	0	1
	NEW ZEALAND	3	0	3
	NICARAGUA	1	0	1
	NIGERIA	1	0	1
	NORWAY	2	0	2
	OMAN	1	0	1
	QATAR	11	0	11
	ROMANIA	1	0	1
	SAUDI ARABIA	9	0	9
	SERBIA	1	0	1
	SINGAPORE	4	0	4
	SLOVAKIA	1	0	1
	SOUTH AFRICA	1	0	1
	SOUTH KOREA	8	0	8
	SWITZERLAND	2	0	2
	TAIWAN	5	0	5
	TAIWAN ROC	2	0	2
	TRINIDAD AND	1	0	1
	TURKEY	2	0	2
	UKRAINE	1	0	1
	UNITED ARAB	10	0	10
	UNITED	5	0	5
	United States	4	0	4
	UNITED	2	0	2
URUGUAY	2	0	2	
VENEZUELA	1	0	1	
Total	2,044	12	2,056	
LIF	United States	42	0	42
	AUSTRALIA	1	0	1
	CANADA	2	0	2
	EGYPT	1	0	1

		Existing Member(s)	New as of 8/1/2016 or later	Total
LIF	ISRAEL	1	0	1
	JAPAN	1	0	1
	UNITED ARAB	1	0	1
	UNITED	2	0	2
	Total	51	0	51
NT	United States	547	17	564
	AUSTRALIA	2	0	2
	AUSTRIA	1	0	1
	CANADA	10	0	10
	CHINA	1	0	1
	COLOMBIA	1	0	1
	ECUADOR	2	0	2
	FRANCE	1	0	1
	GERMANY	1	0	1
	HONG KONG	1	0	1
	HONG KONG	1	0	1
	INDIA	1	0	1
	IRAQ	1	0	1
	ITALY	2	0	2
	JAPAN	11	0	11
	KUWAIT	1	0	1
	MATARA	1	0	1
	MEXICO	2	0	2
	MONGOLIA	1	0	1
	NEW ZEALAND	1	0	1
	PALESTINIAN	2	0	2
	PERU	1	0	1
	QATAR	1	0	1
	RUSSIAN	1	0	1
SINGAPORE	1	0	1	
SOUTH AFRICA	0	1	1	

		Existing Member(s)	New as of 8/1/2016 or later	Total
NT	SOUTH KOREA	3	0	3
	THAILAND	1	0	1
	TURKEY	1	0	1
	United States	1	0	1
	UNITED	4	0	4
	VIET NAM	1	0	1
	Total	606	18	624
NT2	United States	314	9	323
	AUSTRALIA	1	0	1
	CANADA	10	0	10
	HONG KONG	1	0	1
	HONG KONG	2	0	2
	HUNGARY	1	0	1
	ITALY	1	0	1
	JAPAN	2	0	2
	KOREA,	1	0	1
	KUWAIT	1	0	1
	MEXICO	1	0	1
	NEW ZEALAND	1	0	1
	SAUDI ARABIA	1	0	1
	SINGAPORE	2	0	2
	SOUTH KOREA	1	0	1
	TAIWAN	2	0	2
	UNITED ARAB	1	0	1
	UNITED	1	0	1
	Total	344	9	353
	PTR	United States	353	5
AUSTRALIA		2	1	3
CANADA		12	0	12
CHINA		5	0	5
COLOMBIA		3	0	3

		Existing Member(s)	New as of 8/1/2016 or later	Total
PTR	COSTA RICA	3	0	3
	DOMINICAN	2	0	2
	ECUADOR	12	0	12
	EGYPT	1	0	1
	FRANCE	1	0	1
	GERMANY	1	0	1
	HAITI	1	0	1
	ICELAND	1	0	1
	INDONESIA	2	0	2
	JAPAN	9	0	9
	Korea, Republic	1	0	1
	KUWAIT	1	0	1
	Lao People's	1	0	1
	LITHUANIA	1	0	1
	MACAO	1	0	1
	MEXICO	1	0	1
	MOROCCO	1	0	1
	NEW ZEALAND	1	0	1
	NICARAGUA	2	0	2
	NIGERIA	1	0	1
	PAKISTAN	1	0	1
	PANAMA	1	0	1
	PHILIPPINES	3	0	3
	POLAND	1	0	1
	Puerto Rico	3	0	3
	SAUDI ARABIA	1	0	1
	SENEGAL	1	0	1
	SINGAPORE	1	0	1
	SPAIN	3	0	3
	TANZANIA,	3	0	3
THAILAND	2	0	2	

		Existing Member(s)	New as of 8/1/2016 or later	Total
PTR	TURKEY	4	0	4
	UNITED ARAB	2	0	2
	UNITED	5	0	5
	United States	1	0	1
	VENEZUELA	1	0	1
	Total	452	6	458
PTR2	United States	214	0	214
	AUSTRALIA	1	0	1
	BRAZIL	2	0	2
	CANADA	11	0	11
	CHILE	1	0	1
	CHINA	2	0	2
	COLOMBIA	1	0	1
	GERMANY	1	0	1
	HONG KONG	1	0	1
	INDONESIA	1	0	1
	ISRAEL	1	0	1
	ITALY	1	0	1
	JAPAN	4	0	4
	MACAO	1	0	1
	MEXICO	1	0	1
	NIGERIA	1	0	1
	PAKISTAN	0	1	1
	PHILIPPINES	1	0	1
	POLAND	1	0	1
	SAUDI ARABIA	5	0	5
	SRI LANKA	1	0	1
	TAIWAN	5	0	5
	THAILAND	1	0	1
TURKEY	4	0	4	
UGANDA	1	0	1	

		Existing Member(s)	New as of 8/1/2016 or later	Total
PTR2	UNITED ARAB	1	0	1
	Total	264	1	265
RET	United States	132	1	133
	AUSTRALIA	1	0	1
	BRAZIL	1	0	1
	CANADA	3	0	3
	COLOMBIA	1	0	1
	GERMANY	1	0	1
	ISRAEL	1	0	1
	JAPAN	3	0	3
	MEXICO	1	0	1
	PERU	1	0	1
	PORTUGAL	1	0	1
	SRI LANKA	1	0	1
	TURKEY	1	0	1
	Total	148	1	149
RET2	United States	98	0	98
	CANADA	1	0	1
	GERMANY	1	0	1
	ISRAEL	3	0	3
	JAPAN	4	0	4
	NEW ZEALAND	1	0	1
	OMAN	1	0	1
	SOUTH KOREA	1	0	1
	SPAIN	1	0	1
	THAILAND	1	0	1
	UNITED	2	0	2
	Total	114	0	114
STU	United States	793	23	816
	AUSTRALIA	6	0	6
	BARBADOS	1	0	1

		Existing Member(s)	New as of 8/1/2016 or later	Total
STU	BELGIUM	1	0	1
	BRAZIL	4	0	4
	CANADA	27	0	27
	CHINA	5	0	5
	COLOMBIA	1	0	1
	ECUADOR	7	0	7
	GERMANY	1	0	1
	GHANA	1	0	1
	GUATEMALA	1	0	1
	HONDURAS	1	0	1
	HONG KONG	3	0	3
	HONG KONG	3	0	3
	INDONESIA	1	0	1
	ISRAEL	0	1	1
	ITALY	1	0	1
	JAPAN	12	0	12
	KOREA,	1	0	1
	KUWAIT	1	0	1
	MALAYSIA	1	0	1
	MEXICO	7	0	7
	NEPAL	1	0	1
	NEW ZEALAND	1	0	1
	PAKISTAN	1	0	1
	PHILIPPINES	2	0	2
	Puerto Rico	1	0	1
	RUSSIAN	2	0	2
	SAUDI ARABIA	6	0	6
SINGAPORE	1	0	1	
SOUTH AFRICA	1	0	1	
SOUTH KOREA	1	0	1	
TAIWAN	3	0	3	

		Existing Member(s)	New as of 8/1/2016 or later	Total
STU	THAILAND	2	0	2
	TURKEY	9	0	9
	UNITED ARAB	2	0	2
	UNITED	3	0	3
	United States	1	0	1
	UNITED	1	0	1
	Total	917	24	941
STU2	United States	349	8	357
	ALBANIA	2	0	2
	AUSTRALIA	3	1	4
	BRAZIL	2	0	2
	CAMEROON	2	0	2
	CANADA	17	2	19
	CHINA	1	0	1
	FRANCE	1	0	1
	GERMANY	1	0	1
	HONG KONG	2	0	2
	HONG KONG	1	0	1
	INDONESIA	1	0	1
	JAPAN	3	0	3
	Korea, Republic	2	0	2
	KOREA,	0	1	1
	LATVIA	1	0	1
	MACAO	1	0	1
	NEW ZEALAND	2	0	2
	OMAN	1	0	1
	Puerto Rico	1	0	1
	SINGAPORE	1	0	1
	THAILAND	1	0	1
	UNITED	4	0	4
	United States	1	0	1

		Existing Member(s)	New as of 8/1/2016 or later	Total
STU2	VIET NAM	1	0	1
	Total	401	12	413
Total		11,215	139	11,354

This report is based on members paid through 8/31/2016 or later.

Country/State/Province	Total	
02453-2728	1	0.0%
AFGHANISTAN	3	0.0%
ALBANIA	5	0.0%
ALGERIA	6	0.1%
ANGOLA	2	0.0%
ARGENTINA	30	0.3%
ARMENIA	2	0.0%
AUSTRALIA	47	0.4%
AUSTRIA	4	0.0%
AZERBAIJAN	6	0.1%
BAHRAIN	2	0.0%
BANGLADESH	15	0.1%
BARBADOS	1	0.0%
BELARUS	2	0.0%
BELGIUM	1	0.0%
BELIZE	1	0.0%
BENIN	2	0.0%
BERMUDA	1	0.0%
BOLIVIA	21	0.2%
BOSNIA AND HERZEGOVINA	1	0.0%
BRAZIL	102	0.9%
BULGARIA	7	0.1%
BURKINA FASO	1	0.0%
CAMBODIA	3	0.0%
CAMEROON	5	0.0%
CANADA		
<i>CANADA</i>	<i>4</i>	
<i>CANADA Alberta</i>	<i>31</i>	
<i>CANADA Armed Frces Americas</i>	<i>1</i>	
<i>CANADA British Columbia</i>	<i>89</i>	
<i>CANADA Manitoba</i>	<i>10</i>	
<i>CANADA New Brunswick</i>	<i>7</i>	
<i>CANADA Northwest Territories</i>	<i>1</i>	
<i>CANADA Nova Scotia</i>	<i>10</i>	
<i>CANADA Ontario</i>	<i>124</i>	
<i>CANADA Quebec</i>	<i>21</i>	
<i>CANADA Saskatchewan</i>	<i>12</i>	
<i>CANADA Washington</i>	<i>1</i>	
CANADA	311	2.7%
CAYMAN ISLANDS	1	0.0%
CHILE	17	0.1%
CHINA	188	1.7%
COLOMBIA	37	0.3%
COMOROS	1	0.0%
COSTA RICA	24	0.2%
CROATIA	6	0.1%
CUBA	1	0.0%
CYPRUS	2	0.0%
CZECH REPUBLIC	5	0.0%
DENMARK	3	0.0%
DOMINICA	2	0.0%
DOMINICAN REPUBLIC	27	0.2%
ECUADOR	131	1.2%
EGYPT	41	0.4%
EL SALVADOR	12	0.1%
FINLAND	2	0.0%
FRANCE	8	0.1%

GABON	2	0.0%
GEORGIA	5	0.0%
GERMANY	17	0.1%
GHANA	1	0.0%
GREECE	2	0.0%
GRENADA	1	0.0%
GUATEMALA	16	0.1%
HAITI	12	0.1%
HONDURAS	7	0.1%
HONG KONG	14	0.1%
HONG KONG SAR CHINA	18	0.2%
HUNGARY	7	0.1%
ICELAND	1	0.0%
INDIA	83	0.7%
INDONESIA	17	0.1%
IRAN	7	0.1%
IRAN, ISLAMIC REPUBLIC OF	1	0.0%
IRAQ	8	0.1%
IRELAND	1	0.0%
ISRAEL	11	0.1%
ITALY	13	0.1%
JAMAICA	1	0.0%
JAPAN	312	2.7%
JORDAN	7	0.1%
KAZAKHSTAN	7	0.1%
Korea, Republic Of	9	0.1%
KOREA, REPUBLIC OF	1	0.0%
KOREA, REPUBLIC OF	10	0.1%
KOSOVO (UNMIK)	3	0.0%
KUWAIT	15	0.1%
KYRGYZSTAN	1	0.0%
Lao People's Dem Republic	3	0.0%
LATVIA	4	0.0%
LEBANON	10	0.1%
LIBYA	1	0.0%
LITHUANIA	2	0.0%
LUXEMBOURG	1	0.0%
MACAO	7	0.1%
MACEDONIA	1	0.0%
MADAGASCAR	3	0.0%
MALAYSIA	30	0.3%
MARTINIQUE	1	0.0%
MATARA	1	0.0%
MAURITANIA	3	0.0%
MAURITIUS	1	0.0%
MEXICO	85	0.7%
MOLDOVA, REPUBLIC OF	2	0.0%
MONGOLIA	12	0.1%
MOROCCO	34	0.3%
MOZAMBIOUE	1	0.0%
MYANMAR	2	0.0%
NAMIBIA	1	0.0%
NEPAL	22	0.2%
NETHERLANDS	3	0.0%
NEW CALEDONIA	1	0.0%
NEW ZEALAND	16	0.1%
NICARAGUA	6	0.1%
NIGER	1	0.0%
NIGERIA	13	0.1%
NORWAY	8	0.1%
OMAN	8	0.1%

PAKISTAN		26	0.2%
PALESTINIAN TERRITORY		4	0.0%
PANAMA		20	0.2%
PARAGUAY		5	0.0%
PEOPLES REP OF CHINA		27	0.2%
PERU		112	1.0%
PHILIPPINES		39	0.3%
POLAND		14	0.1%
PORTUGAL		2	0.0%
Puerto Rico		5	0.0%
OATAR		20	0.2%
ROMANIA		2	0.0%
RUSSIA		6	0.1%
RUSSIAN FEDERATION		17	0.1%
RWANDA		5	0.0%
SAUDI ARABIA		39	0.3%
SENEGAL		3	0.0%
SERBIA		6	0.1%
SIERRA LEONE		1	0.0%
SINGAPORE		14	0.1%
SLOVAKIA		2	0.0%
SOUTH AFRICA		6	0.1%
SOUTH KOREA		25	0.2%
SPAIN		8	0.1%
SRI LANKA		8	0.1%
SUDAN		1	0.0%
SWAZILAND		1	0.0%
SWEDEN		6	0.1%
SWITZERLAND		3	0.0%
SYRIAN ARAB REPUBLIC		1	0.0%
TAIWAN		24	0.2%
TAIWAN ROC		8	0.1%
TAJKISTAN		2	0.0%
TANZANIA, UNITED REPUBLIC		4	0.0%
THAILAND		43	0.4%
TRINIDAD AND TOBAGO		3	0.0%
TUNISIA		3	0.0%
TURKEY		61	0.5%
UGANDA		2	0.0%
UKRAINE		9	0.1%
UNITED ARAB EMIRATES		39	0.3%
UNITED KINGDOM		36	0.3%
United States		17	0.1%
UNITED STATES OF AMERICA		11	0.1%
URUGUAY		13	0.1%
USA			
<i>USA</i>		<i>50</i>	
<i>USA</i>	<i>Alabama</i>	<i>100</i>	
<i>USA</i>	<i>Alaska</i>	<i>15</i>	
<i>USA</i>	<i>American Embassy</i>	<i>13</i>	
<i>USA</i>	<i>Arizona</i>	<i>161</i>	
<i>USA</i>	<i>Arkansas</i>	<i>55</i>	
<i>USA</i>	<i>Armed Forces</i>	<i>9</i>	
<i>USA</i>	<i>Armed Frces Americas</i>	<i>4</i>	
<i>USA</i>	<i>British Columbia</i>	<i>1</i>	
<i>USA</i>	<i>California</i>	<i>742</i>	
<i>USA</i>	<i>Colorado</i>	<i>131</i>	
<i>USA</i>	<i>Connecticut</i>	<i>130</i>	
<i>USA</i>	<i>Delaware</i>	<i>81</i>	
<i>USA</i>	<i>District of Columbia</i>	<i>194</i>	
<i>USA</i>	<i>Florida</i>	<i>317</i>	

USA	Georgia	181	
USA	Guam	1	
USA	Hawaii	52	
USA	Idaho	40	
USA	Illinois	304	
USA	Indiana	160	
USA	Iowa	95	
USA	Kansas	140	
USA	Kentucky	83	
USA	Louisiana	45	
USA	Maine	51	
USA	Manitoba	1	
USA	Maryland	509	
USA	Massachusetts	306	
USA	Michigan	249	
USA	Minnesota	128	
USA	Mississippi	64	
USA	Missouri	194	
USA	Montana	13	
USA	Nebraska	58	
USA	Nevada	39	
USA	New Hampshire	55	
USA	New Jersey	258	
USA	New Mexico	41	
USA	New York	671	
USA	North Carolina	169	
USA	North Dakota	20	
USA	Ohio	267	
USA	Oklahoma	52	
USA	Ontario	1	
USA	Oregon	210	
USA	Pennsylvania	398	
USA	Prince Edward Island	1	
USA	Puerto Rico	21	
USA	Rhode Island	57	
USA	Saskatchewan	1	
USA	South Carolina	55	
USA	South Dakota	15	
USA	Tennessee	120	
USA	Texas	392	
USA	Utah	78	
USA	Vermont	68	
USA	Virginia	496	
USA	Washington	266	
USA	West Virginia	34	
USA	Wisconsin	133	
USA	Wyoming	8	
USA		8,603	75.8%
UZBEKISTAN		19	0.2%
VANUATU		2	0.0%
VENEZUELA		27	0.2%
VIET NAM		6	0.1%
VIETNAM		8	0.1%
YEMEN		3	0.0%
Grand Total:		11,354	

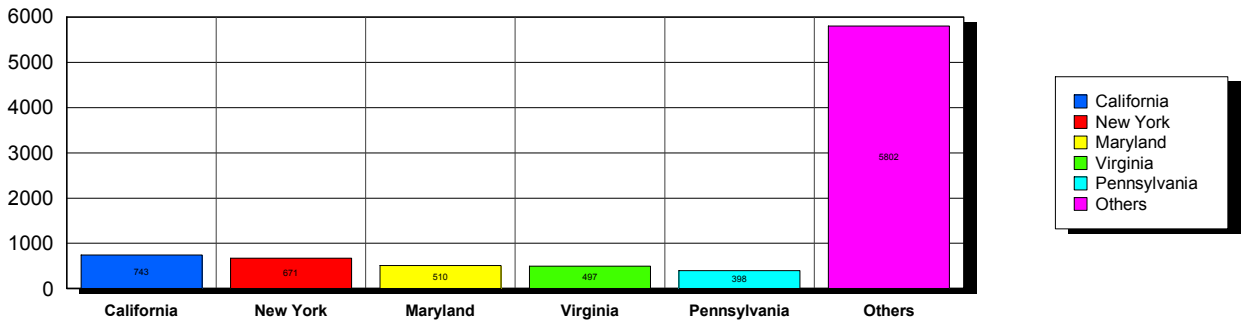
157 distinct countries represented.

9/15/2016

Membership counts by country for members paid through 08/31/2016 or later.

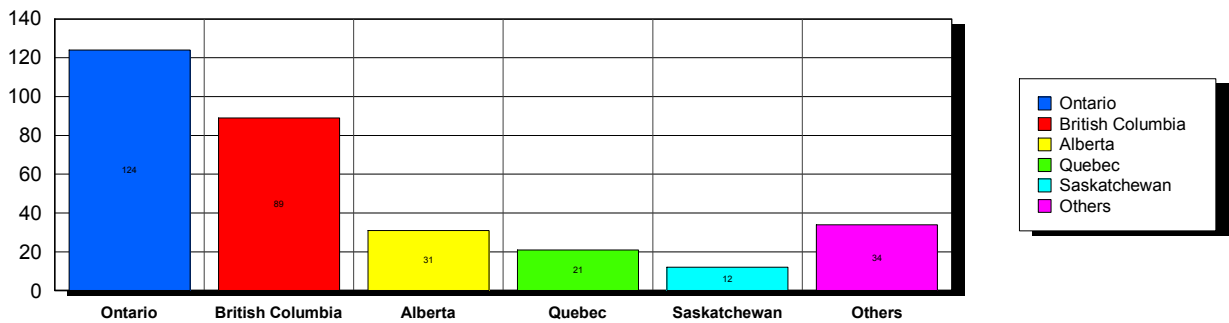
USA

Top 5 States per Country

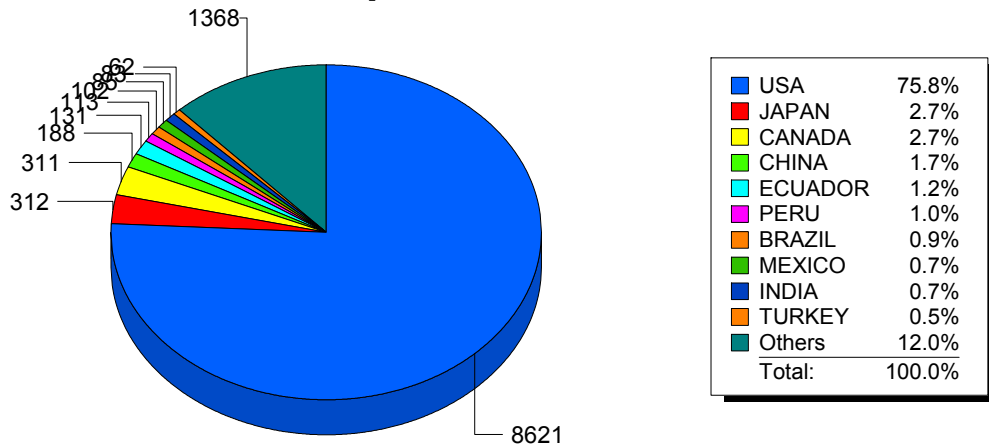


CANADA

Top 5 States per Country



Top 10 Countries



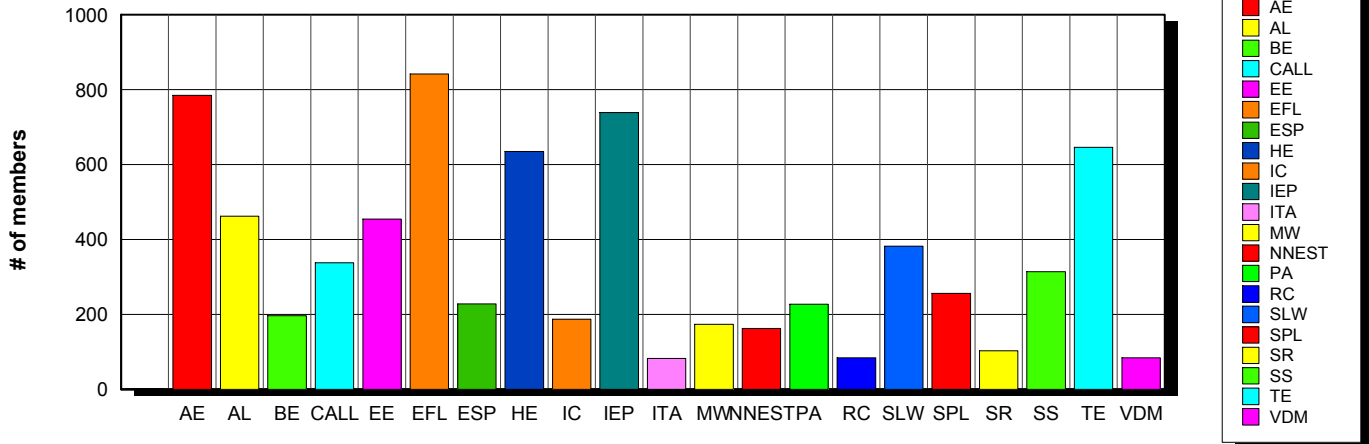
9/15/2016 **Basic statistics on Primary vs. other memberships in interest sections. For members paid through 8/31/2016 or later.**

		<i>Primary versus other</i>		
No Primary Interest Section	0.0%	6	1	5
Adult Education	6.7%	2,056	785	1,271
Applied Linguistics	6.2%	1,897	462	1,435
Bilingual Education	3.4%	1,051	196	855
Computer-Assisted Language Learning	5.4%	1,665	338	1,327
Elementary Education	3.5%	1,059	454	605
English as a Foreign Language	7.4%	2,268	842	1,426
English for Specific Purposes	4.7%	1,440	228	1,212
Higher Education	6.6%	2,018	635	1,383
Intercultural Communication	5.2%	1,596	187	1,409
Intensive English Programs	6.6%	2,006	739	1,267
International Teaching Assistants	2.1%	631	82	549
Materials Writers	3.6%	1,113	173	940
Nonnative English Speakers in TESOL	3.1%	941	162	779
Program Administration	3.7%	1,140	227	913
Refugee Concerns	2.5%	756	84	672
Second Language Writing	6.6%	2,014	382	1,632
Speech, Pronunciation, and Listening	5.7%	1,744	256	1,488
Social Responsibility	2.4%	735	103	632
Secondary Schools	3.0%	927	314	613
Teacher Education	7.8%	2,387	646	1,741
Video & Digital Media	3.7%	1,139	84	1,055
<i>7,505 distinct members</i>		Total # of IS memberships	30,589	7,380
				23,209

The total count is the number of IS memberships total and may either be LESS or MORE than the actual number of individual members of TESOL. Due to open access to Interest Sections, these numbers may fluctuate considerably each month. For instance, one member may have selected four interest sections, while some members may belong to none.

Interest Sections

(Primary)

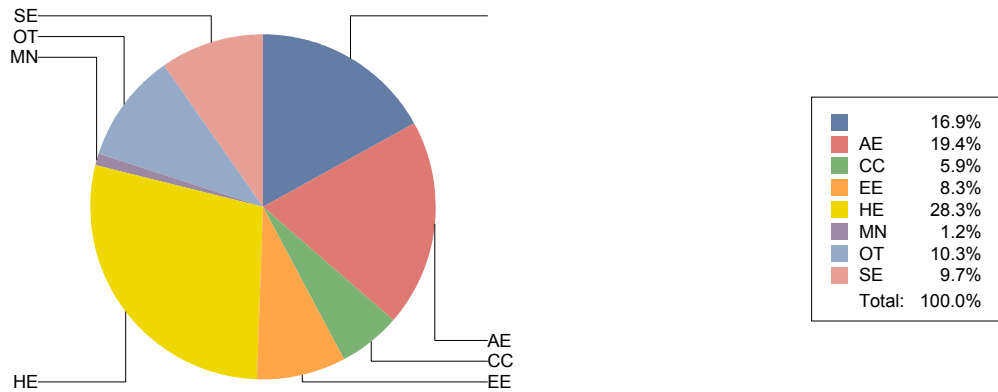


Basic Statistics on Area of Work (Members paid through >= 8/31/2016)

		1,907	16.9%
Adult Education	AE	2,186	19.4%
Community/2yr College	CC	670	5.9%
Elementary Education	EE	933	8.3%
Postsecondary Education	HE	3,197	28.3%
Mainstream	MN	136	1.2%
Other	OT	1,165	10.3%
Secondary Education	SE	1,094	9.7%
		11,288	

Only members who selected an area of work are included on this report. Other members may not have responded to this question and are excluded from the count.

Areas of Work



(Blanks indicate no response)

Statistics on Areas of Interest (Members paid through >= 8/31/2016)

<u>CODE</u>	<u>DESCRIPTION</u>	<u>TOTAL*</u>	<u>% of TOTAL*</u>
TE	Teacher education	1,524	5%
CURRICULUM	Materials development/Curriculum	1,462	4%
EFL	English as a foreign language	1,401	4%
SLA	Second language acquisition	1,377	4%
AL	Applied linguistics	1,333	4%
HE	Higher education	1,306	4%
WRITING	Writing/composition	1,262	4%
IC	Multiculturalism/intercultural communications	1,245	4%
CALL	Technology in education	1,228	4%
IEP	Intensive English programs	1,215	4%
AE	Adult education	1,173	4%
PROFDEV	Professional development	1,130	3%
CONTENT	Content-based instruction	1,099	3%
SP	Speaking/pronunciation	1,036	3%
READING	Reading/literacy	1,012	3%
GRAMMAR	Grammar	970	3%
ASSESS	Assessment/testing	935	3%
ESP	English for specific purposes	901	3%
RS	Research	864	3%
PA	Program administration	690	2%
DISTANCE	Distance learning/Online Education	678	2%
VOCAB	Vocabulary/Lexicon	678	2%
BE	Bilingual education	634	2%
SOCIAL	Social/global/political concerns	580	2%
LISTEN	Listening	557	2%
ISKILL	Integrated Skills	552	2%
WORKPLACE	Workplace English instruction/Business English	531	2%
VI	Video and digital media	523	2%
EE	Elementary/primary education	505	2%
SS	Secondary education	495	1%
COMMCOLL	Community college/technical ed	440	1%
RC	Refugee concerns	379	1%
LINGUISTICS	Theoretical Linguistics	375	1%
STANDARDS	Standards	361	1%
LIT	Literature	341	1%
ITA	International teaching assistants	339	1%
FAMILY	Community/family outreach	281	1%
NNES	NNES/NES issues	276	1%
EMPLOYMENT	Employment issues/Certification	263	1%
PUBLICPOLICY	Public policy	235	1%
LDSN	Learning Disorders/Special Needs	225	1%
ACCRED	Accreditation	216	1%
MAINSTREAMING	Mainstreaming	191	1%
ARTS	Arts/Media/Science/Math/Social Science	149	0%
STYLISTICS	Stylistics	62	0%

Sorted in order of prevalence.

** Note: Members are encouraged to choose multiple areas of interest and some members do not choose any areas of interest. The total number of distinct members (4,150) represented in this report is less than the total number of active members as indicated elsewhere in this report.*

Areas of interest are separate from official TESOL interest sections. Areas of interest represent distinct areas in which a member may be interested, rather than official entities in which a member is involved.

Areas of interest which have a very low count may be recent additions to the AOI list, or may reflect overall trends in membership.

Statistics on Areas of Expertise (Members paid through >= 8/31/2016)

<u>CODE</u>	<u>DESCRIPTION</u>	<u>TOTAL*</u>	<u>% of TOTAL*</u>
EFL	English as a foreign language	914	6%
CURRICULUM	Materials development/Curriculum	804	5%
AE	Adult education	774	5%
WRITING	Writing/composition	758	5%
IEP	Intensive English programs	741	5%
TE	Teacher education	727	5%
AL	Applied linguistics	690	4%
HE	Higher education	682	4%
SLA	Second language acquisition	599	4%
CONTENT	Content-based instruction	570	4%
GRAMMAR	Grammar	551	4%
IC	Multiculturalism/intercultural communications	476	3%
CALL	Technology in education	471	3%
PROFDEV	Professional development	460	3%
ESP	English for specific purposes	440	3%
SP	Speaking/pronunciation	436	3%
READING	Reading/literacy	428	3%
PA	Program administration	396	3%
ASSESS	Assessment/testing	380	2%
EE	Elementary/primary education	336	2%
ISKILL	Integrated Skills	311	2%
DISTANCE	Distance learning/Online Education	287	2%
COMMCOLL	Community college/technical ed	277	2%
RS	Research	266	2%
SS	Secondary education	263	2%
BE	Bilingual education	244	2%
WORKPLACE	Workplace English instruction/Business English	232	1%
LISTEN	Listening	227	1%
VOCAB	Vocabulary/Lexicon	208	1%
LIT	Literature	177	1%
VI	Video and digital media	143	1%
SOCIAL	Social/global/political concerns	140	1%
NNES	NNES/NES issues	126	1%
ITA	International teaching assistants	123	1%
ACCRED	Accreditation	119	1%
LINGUISTICS	Theoretical Linguistics	89	1%
MAINSTREAMING	Mainstreaming	89	1%
STANDARDS	Standards	89	1%
RC	Refugee concerns	86	1%
FAMILY	Community/family outreach	80	1%
ARTS	Arts/Media/Science/Math/Social Science	77	0%
LDSN	Learning Disorders/Special Needs	72	0%
EMPLOYMENT	Employment issues/Certification	67	0%
PUBLICPOLICY	Public policy	46	0%
STYLISTICS	Stylistics	16	0%

Sorted in order of prevalence.

** Note: Members are encouraged to choose multiple areas of expertise and some members do not choose any areas of expertise. The total number of distinct members (3,364) represented in this report is less than the total number of active members as indicated elsewhere in this report.*

Areas of Expertise are separate from official TESOL interest sections or Areas of Interest. Areas of expertise represent distinct areas in which a member may be experienced in, rather than official entities in which a member is involved.

Areas of interest which have a very low count may be recent additions to the AOI list, or may reflect overall trends in membership.