

1/18/2017

Membership Statistics: Grand totals for basic membership, by member type and country

		<u># Memberships</u>	<u># Members</u>
IND	BASIC		
	Existing Member(s)	4,507	4,507
	New as of 12/1/2016 or later	155	155
IND	BASIC	4,662	4,662

IND2	BASIC		
	Existing Member(s)	2,052	2,052
	New as of 12/1/2016 or later	12	12
IND2	BASIC	2,064	2,064

STU	BASIC		
	Existing Member(s)	937	937
	New as of 12/1/2016 or later	21	21
STU	BASIC	958	958

STU2	BASIC		
	Existing Member(s)	410	410
	New as of 12/1/2016 or later	14	14
STU2	BASIC	424	424

LIF	BASIC		
	Existing Member(s)	51	51
LIF	BASIC	51	51

RET	BASIC		
	Existing Member(s)	151	151
	New as of 12/1/2016 or later	1	1
RET	BASIC	152	152

RET2	BASIC		
	Existing Member(s)	116	116
RET2	BASIC	116	116

PTR	BASIC		
	Existing Member(s)	429	429
	New as of 12/1/2016 or later	11	11
PTR	BASIC	440	440

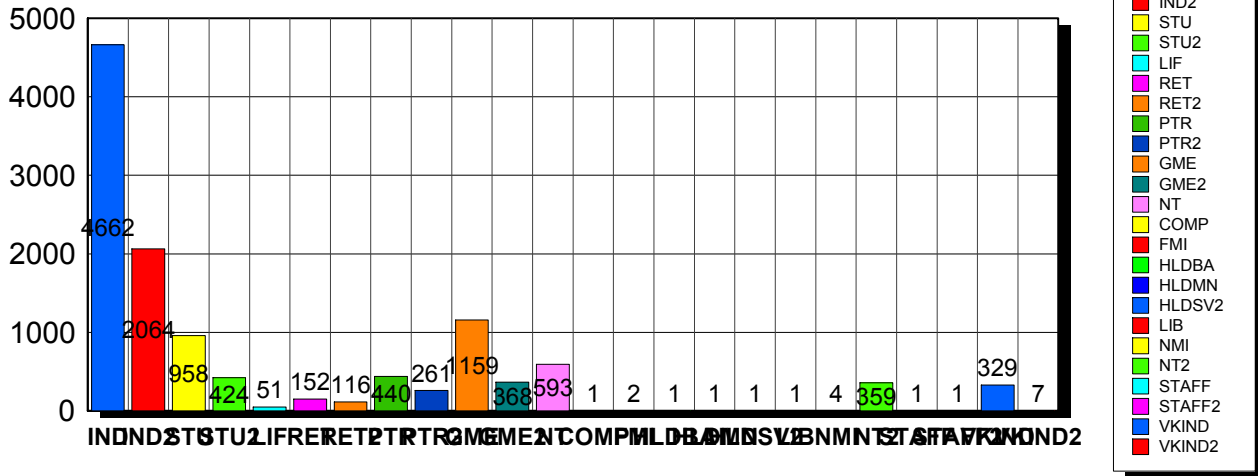
PTR2	BASIC		
	Existing Member(s)	258	258
	New as of 12/1/2016 or later	3	3
PTR2	BASIC	261	261

GME	BASIC		
	Existing Member(s)	1,122	1,122
	New as of 12/1/2016 or later	37	37
GME	BASIC	1,159	1,159

GME2	BASIC		
	Existing Member(s)	361	361
	New as of 12/1/2016 or later	7	7
GME2	BASIC	368	368

NT	BASIC		
	Existing Member(s)	570	570
	New as of 12/1/2016 or later	23	23
NT	BASIC	593	593
COMP	BASIC		
	Existing Member(s)	1	1
COMP	BASIC	1	1
FMI	BASIC		
	Existing Member(s)	2	2
FMI	BASIC	2	2
HLDBA	BASIC		
	Existing Member(s)	1	1
HLDBA	BASIC	1	1
HLDMN	BASIC		
	Existing Member(s)	1	1
HLDMN	BASIC	1	1
HLDSV2	BASIC		
	Existing Member(s)	1	1
HLDSV2	BASIC	1	1
LIB	BASIC		
	Existing Member(s)	1	1
LIB	BASIC	1	1
NMI	BASIC		
	Existing Member(s)	4	4
NMI	BASIC	4	4
NT2	BASIC		
	Existing Member(s)	353	353
	New as of 12/1/2016 or later	6	6
NT2	BASIC	359	359
STAFF	BASIC		
	Existing Member(s)	1	1
STAFF	BASIC	1	1
STAFF2	BASIC		
	Existing Member(s)	1	1
STAFF2	BASIC	1	1
VKIND	BASIC		
	Existing Member(s)	4	4
	New as of 12/1/2016 or later	325	325
VKIND	BASIC	329	329
VKIND2	BASIC		
	Existing Member(s)	1	1
	New as of 12/1/2016 or later	6	6
VKIND2	BASIC	7	7

Member Types



Note: in all general statistic reports, joint household memberships are treated as "one" member EXCEPT in the second column of this report, where joints are counted as two people, providing the most accurate count of the number of TESOL members.

		Existing Member(s)	New as of 12/1/2016 or later	Total
COMP	United States	1	0	1
	Total	1	0	1
FMI	United States	1	0	1
	PERU	1	0	1
	Total	2	0	2
GME	United States	39	2	41
	13276030	1	0	1
	AFGHANISTAN	4	0	4
	ALBANIA	2	0	2
	ALGERIA	5	0	5
	ARGENTINA	23	1	24
	ARMENIA	2	2	4
	AUSTRALIA	1	0	1
	AZERBAIJAN	3	0	3
	BAHRAIN	1	0	1
	BANGLADESH	14	0	14

		Existing Member(s)	New as of 12/1/2016 or later	Total
GME	BELARUS	1	0	1
	BELIZE	1	0	1
	BENIN	1	0	1
	BHUTAN	2	0	2
	BOLIVIA	19	9	28
	BOSNIA AND	1	0	1
	BRAZIL	68	1	69
	BURKINA FASO	1	0	1
	CAMBODIA	1	0	1
	CAMEROON	1	0	1
	CANADA	0	1	1
	CHILE	7	0	7
	CHINA	85	1	86
	COLOMBIA	17	0	17
	COMOROS	1	0	1
	COSTA RICA	18	0	18
	CROATIA	4	0	4
	CUBA	1	1	2
	DOMINICA	1	0	1
	DOMINICAN	15	0	15
	ECUADOR	82	1	83
	EGYPT	29	4	33
	EL SALVADOR	12	0	12
	ETHIOPIA	2	0	2
	GEORGIA	23	0	23
	GUATEMALA	14	0	14
	GUINEA	1	0	1
HAITI	7	0	7	
HONDURAS	7	0	7	
HONG KONG	1	1	2	
HUNGARY	5	0	5	

		Existing Member(s)	New as of 12/1/2016 or later	Total
GME	INDIA	54	1	55
	INDONESIA	11	0	11
	IRAN	8	1	9
	IRAQ	9	0	9
	ISRAEL	1	0	1
	JAMAICA	1	0	1
	JAPAN	2	0	2
	JORDAN	1	0	1
	KAZAKHSTAN	1	1	2
	KOSOVO	2	0	2
	KYRGYZSTAN	3	0	3
	Lao People's	1	0	1
	LATVIA	1	0	1
	LEBANON	6	0	6
	LIBYA	1	0	1
	MACEDONIA	1	0	1
	MADAGASCAR	1	0	1
	MALAYSIA	12	0	12
	MAURITANIA	2	0	2
	MAURITIUS	1	0	1
	MEXICO	51	1	52
	MOLDOVA,	2	0	2
	MONGOLIA	3	0	3
	MOROCCO	28	2	30
	MYANMAR	2	0	2
	NEPAL	22	0	22
	NICARAGUA	5	1	6
	NIGERIA	6	0	6
	OMAN	1	0	1
	PAKISTAN	17	0	17
PALESTINIAN	2	0	2	

		Existing Member(s)	New as of 12/1/2016 or later	Total
GME	PANAMA	17	0	17
	PARAGUAY	4	0	4
	PEOPLES REP	25	0	25
	PERU	117	2	119
	PHILIPPINES	31	0	31
	POLAND	6	0	6
	ROMANIA	1	0	1
	RUSSIA	3	1	4
	RUSSIAN	9	0	9
	RWANDA	5	1	6
	SENEGAL	1	0	1
	SERBIA	3	0	3
	SOUTH AFRICA	2	0	2
	SRI LANKA	4	0	4
	SUDAN	1	0	1
	SWAZILAND	1	0	1
	SYRIAN ARAB	1	0	1
	TAIWAN	2	0	2
	TAIWAN ROC	3	1	4
	TANZANIA,	1	0	1
	THAILAND	16	0	16
	TUNISIA	3	0	3
	TURKEY	27	0	27
	UGANDA	1	0	1
	UKRAINE	8	0	8
	UNITED	2	0	2
	United States	3	1	4
	URUGUAY	6	0	6
	UZBEKISTAN	3	0	3
	VENEZUELA	25	0	25
VIET NAM	5	0	5	

		Existing Member(s)	New as of 12/1/2016 or later	Total
GME	VIETNAM	4	0	4
	YEMEN	1	0	1
	Total	1,122	37	1,159
GME2	United States	11	0	11
	AFGHANISTAN	1	0	1
	ALBANIA	1	0	1
	ALGERIA	1	0	1
	ARGENTINA	6	0	6
	ARMENIA	1	0	1
	AZERBAIJAN	1	0	1
	BANGLADESH	1	0	1
	BELARUS	1	0	1
	BENIN	1	0	1
	BOLIVIA	4	0	4
	BRAZIL	19	0	19
	BULGARIA	4	0	4
	BURKINA FASO	1	0	1
	CAMBODIA	2	0	2
	CAMEROON	3	0	3
	CHILE	6	0	6
	CHINA	46	1	47
	COLOMBIA	13	0	13
	COSTA RICA	6	1	7
	DOMINICAN	8	0	8
	ECUADOR	19	0	19
	EGYPT	4	0	4
	GABON	2	0	2
	GRENADA	1	0	1
	GUATEMALA	1	0	1
	INDIA	22	1	23
INDONESIA	2	0	2	

		Existing Member(s)	New as of 12/1/2016 or later	Total
GME2	IRAQ	1	0	1
	JORDAN	3	0	3
	KAZAKHSTAN	4	0	4
	LATVIA	2	0	2
	LEBANON	3	0	3
	LITHUANIA	1	0	1
	MADAGASCAR	1	0	1
	MALAYSIA	8	0	8
	MAURITANIA	1	0	1
	MEXICO	19	0	19
	MOLDOVA,	1	0	1
	MONGOLIA	4	0	4
	MOROCCO	3	0	3
	NAMIBIA	1	0	1
	NEPAL	4	0	4
	NIGER	1	0	1
	NIGERIA	5	0	5
	PAKISTAN	3	0	3
	PANAMA	3	0	3
	PARAGUAY	1	0	1
	PEOPLES REP	2	0	2
	PERU	9	1	10
	PHILIPPINES	7	0	7
	POLAND	6	0	6
	RUSSIA	4	0	4
	RUSSIAN	5	0	5
	SAUDI ARABIA	0	1	1
	SENEGAL	1	0	1
	SIERRA LEONE	1	0	1
	SRI LANKA	2	0	2
TAIWAN ROC	2	0	2	

		Existing Member(s)	New as of 12/1/2016 or later	Total
GME2	THAILAND	14	0	14
	TUNISIA	1	0	1
	TURKEY	16	1	17
	UNITED	1	0	1
	United States	2	1	3
	URUGUAY	3	0	3
	UZBEKISTAN	19	0	19
	VENEZUELA	3	0	3
	VIET NAM	1	0	1
	VIETNAM	4	0	4
	YEMEN	1	0	1
	Total	361	7	368
	HLDBA	United States	1	0
Total		1	0	1
HLDMN	United States	1	0	1
	Total	1	0	1
HLDSV2	United States	1	0	1
	Total	1	0	1
IND	United States	3,856	126	3,982
	ANGOLA	1	0	1
	ARGENTINA	1	0	1
	ARMENIA	1	0	1
	AUSTRALIA	19	0	19
	AUSTRIA	2	0	2
	BAHRAIN	1	0	1
	BERMUDA	1	0	1
	BRAZIL	9	1	10
	CANADA	124	9	133
	CHILE	1	0	1
	CHINA	4	0	4
	COLOMBIA	1	0	1

		Existing Member(s)	New as of 12/1/2016 or later	Total
IND	COSTA RICA	2	0	2
	CZECH	2	0	2
	DENMARK	1	1	2
	ECUADOR	2	0	2
	EGYPT	1	0	1
	FINLAND	1	0	1
	FRANCE	3	0	3
	GERMANY	4	0	4
	GREECE	1	0	1
	HAITI	1	0	1
	HONG KONG	2	0	2
	HONG KONG	3	0	3
	HUNGARY	1	0	1
	INDIA	0	1	1
	IRAQ	1	0	1
	ISRAEL	1	0	1
	ITALY	4	0	4
	JAPAN	177	5	182
	KAZAKHSTAN	1	0	1
	Korea, Republic	9	0	9
	KOREA,	1	0	1
	KOREA,	4	0	4
	KUWAIT	10	0	10
	NETHERLAND	3	0	3
	NETHERLAND	0	1	1
	NEW ZEALAND	5	0	5
	NORWAY	2	0	2
OMAN	7	0	7	
PEOPLES REP	1	0	1	
QATAR	3	0	3	
SAUDI ARABIA	18	0	18	

		Existing Member(s)	New as of 12/1/2016 or later	Total
IND	SINGAPORE	2	0	2
	SLOVAKIA	1	0	1
	SOUTH AFRICA	1	0	1
	SOUTH KOREA	10	0	10
	SPAIN	7	0	7
	SWEDEN	3	5	8
	SWITZERLAND	1	0	1
	TAIWAN	5	0	5
	TEHRAN	1	0	1
	THAILAND	2	0	2
	TRINIDAD AND	1	0	1
	TURKEY	1	0	1
	UGANDA	1	0	1
	UNITED ARAB	21	0	21
	UNITED	9	0	9
	United States	139	6	145
	UNITED	3	0	3
	URUGUAY	1	0	1
	US MINOR	1	0	1
	USA	1	0	1
	VANUATU	2	0	2
VIET NAM	1	0	1	
YEMEN	1	0	1	
Total	4,507	155	4,662	
IND2	United States	1,650	8	1,658
	AUSTRALIA	14	0	14
	AUSTRIA	2	0	2
	BAHRAIN	1	0	1
	BURKINA FASO	1	0	1
	CANADA	102	3	105
	CAYMAN	1	0	1

		Existing Member(s)	New as of 12/1/2016 or later	Total
IND2	CHILE	1	0	1
	CHINA	8	0	8
	CYPRUS	2	0	2
	CZECH	1	0	1
	DOMINICA	1	0	1
	FINLAND	1	0	1
	FRANCE	1	0	1
	GERMANY	4	0	4
	HONG KONG	2	0	2
	HONG KONG	8	0	8
	INDIA	1	0	1
	INDONESIA	1	0	1
	IRAQ	1	0	1
	ITALY	3	0	3
	JAPAN	92	0	92
	Korea, Republic	4	0	4
	KOREA,	3	0	3
	KUWAIT	3	0	3
	Lao People's	1	0	1
	LUXEMBOURG	1	0	1
	MACAO	4	0	4
	MALAYSIA	1	1	2
	MARTINIQUE	1	0	1
	MYANMAR	1	0	1
	NEW	1	0	1
	NEW ZEALAND	4	0	4
	NICARAGUA	1	0	1
	NORWAY	2	0	2
	QATAR	12	0	12
	ROMANIA	1	0	1
SAUDI ARABIA	9	0	9	

		Existing Member(s)	New as of 12/1/2016 or later	Total
IND2	SERBIA	1	0	1
	SINGAPORE	5	0	5
	SOUTH AFRICA	1	0	1
	SOUTH KOREA	5	0	5
	SUDAN	1	0	1
	SWITZERLAND	2	0	2
	TAIWAN	4	0	4
	TAIWAN ROC	2	0	2
	TURKEY	1	0	1
	UKRAINE	1	0	1
	UNITED ARAB	10	0	10
	UNITED	7	0	7
	United States	60	0	60
	UNITED	2	0	2
	URUGUAY	2	0	2
	US MINOR	1	0	1
	Total	2,052	12	2,064
LIB	United States	1	0	1
	Total	1	0	1
LIF	United States	42	0	42
	CANADA	2	0	2
	EGYPT	1	0	1
	HONG KONG	1	0	1
	ISRAEL	1	0	1
	JAPAN	1	0	1
	UNITED ARAB	1	0	1
	UNITED	2	0	2
	Total	51	0	51
NMI	United States	3	0	3
	IRAN, ISLAMIC	1	0	1
	Total	4	0	4

		Existing Member(s)	New as of 12/1/2016 or later	Total
NT	United States	496	18	514
	ALAND	1	0	1
	AUSTRALIA	1	0	1
	BAHRAIN	1	0	1
	CANADA	12	0	12
	CHINA	1	0	1
	ECUADOR	1	0	1
	FRANCE	1	0	1
	HONG KONG	1	0	1
	HONG KONG	1	0	1
	INDIA	1	0	1
	IRAQ	1	0	1
	ITALY	2	0	2
	JAPAN	13	1	14
	Korea, Republic	1	0	1
	KUWAIT	1	0	1
	MEXICO	2	0	2
	MONGOLIA	1	0	1
	NEW ZEALAND	1	0	1
	PAKISTAN	0	1	1
	PALESTINIAN	2	0	2
	PERU	1	0	1
	QATAR	1	0	1
	RUSSIAN	1	0	1
	SINGAPORE	1	0	1
	SOUTH AFRICA	1	0	1
	SOUTH KOREA	3	0	3
	SWEDEN	0	1	1
	THAILAND	1	0	1
	TURKEY	1	0	1
UNITED	1	0	1	

		Existing Member(s)	New as of 12/1/2016 or later	Total
NT	United States	13	2	15
	UNITED	4	0	4
	VIET NAM	1	0	1
	Total	570	23	593
NT2	United States	300	6	306
	AFGHANISTAN	1	0	1
	AUSTRALIA	3	0	3
	CANADA	9	0	9
	HONG KONG	1	0	1
	HONG KONG	2	0	2
	HUNGARY	1	0	1
	ITALY	1	0	1
	JAPAN	6	0	6
	KOREA,	1	0	1
	KUWAIT	1	0	1
	MACAO	1	0	1
	MEXICO	2	0	2
	NEW ZEALAND	1	0	1
	QATAR	1	0	1
	SAUDI ARABIA	1	0	1
	SINGAPORE	2	0	2
	SOUTH KOREA	1	0	1
	TAIWAN	2	0	2
	UNITED ARAB	1	0	1
	UNITED	1	0	1
	United States	14	0	14
Total	353	6	359	
PTR	United States	337	5	342
	AUSTRALIA	3	0	3
	CANADA	11	1	12
	CHINA	5	0	5

		Existing Member(s)	New as of 12/1/2016 or later	Total
PTR	COLOMBIA	3	0	3
	COSTA RICA	2	0	2
	COTE	1	0	1
	CZECH	1	0	1
	DOMINICAN	2	0	2
	ECUADOR	7	0	7
	GERMANY	1	1	2
	ICELAND	1	0	1
	INDIA	1	0	1
	INDONESIA	2	0	2
	ITALY	1	0	1
	JAPAN	9	1	10
	Korea, Republic	0	1	1
	KUWAIT	1	0	1
	Lao People's	1	0	1
	LITHUANIA	1	0	1
	MEXICO	2	0	2
	NEW ZEALAND	1	0	1
	NICARAGUA	2	0	2
	NIGERIA	1	0	1
	PAKISTAN	1	0	1
	PANAMA	1	0	1
	PHILIPPINES	3	0	3
	POLAND	1	0	1
	Puerto Rico	2	0	2
	SENEGAL	1	0	1
	SINGAPORE	1	0	1
	SPAIN	2	0	2
	THAILAND	2	0	2
	TURKEY	4	0	4
UNITED ARAB	2	0	2	

		Existing Member(s)	New as of 12/1/2016 or later	Total
PTR	UNITED	3	0	3
	United States	9	1	10
	US MINOR	0	1	1
	VENEZUELA	1	0	1
	Total	429	11	440
PTR2	United States	202	2	204
	AUSTRALIA	1	0	1
	BRAZIL	1	0	1
	CANADA	10	0	10
	CHILE	1	0	1
	CHINA	1	0	1
	COLOMBIA	1	0	1
	GERMANY	2	0	2
	HONG KONG	1	0	1
	INDONESIA	1	0	1
	ISRAEL	1	0	1
	ITALY	2	0	2
	JAPAN	4	0	4
	MACAO	1	0	1
	MEXICO	1	0	1
	NIGERIA	1	0	1
	PAKISTAN	1	0	1
	PHILIPPINES	1	0	1
	POLAND	1	0	1
	SAUDI ARABIA	4	0	4
	SRI LANKA	1	0	1
	TAIWAN	3	0	3
	THAILAND	1	0	1
	TURKEY	2	0	2
	UNITED ARAB	1	1	2
	United States	11	0	11

		Existing Member(s)	New as of 12/1/2016 or later	Total
PTR2	URUGUAY	1	0	1
	Total	258	3	261
RET	United States	128	0	128
	AUSTRALIA	1	0	1
	BRAZIL	1	0	1
	CANADA	3	0	3
	COLOMBIA	1	0	1
	GERMANY	1	0	1
	ISRAEL	1	0	1
	JAPAN	2	0	2
	MEXICO	1	0	1
	PERU	1	0	1
	PORTUGAL	1	0	1
	SRI LANKA	1	0	1
	SWITZERLAND	1	0	1
	TURKEY	1	0	1
	United States	7	1	8
	Total	151	1	152
RET2	United States	97	0	97
	CANADA	1	0	1
	GERMANY	1	0	1
	ISRAEL	3	0	3
	JAPAN	4	0	4
	NEW ZEALAND	1	0	1
	OMAN	1	0	1
	SOUTH KOREA	1	0	1
	SPAIN	1	0	1
	THAILAND	1	0	1
	UNITED	2	0	2
	United States	3	0	3
	Total	116	0	116

		Existing Member(s)	New as of 12/1/2016 or later	Total
STAFF	United States	1	0	1
	Total	1	0	1
STAFF2	United States	1	0	1
	Total	1	0	1
STU	United States	775	18	793
	AUSTRALIA	8	0	8
	BARBADOS	1	0	1
	BRAZIL	4	0	4
	CANADA	31	0	31
	CHINA	4	0	4
	COLOMBIA	1	0	1
	ECUADOR	8	0	8
	GERMANY	1	0	1
	GHANA	1	0	1
	GUATEMALA	1	0	1
	HONDURAS	2	0	2
	HONG KONG	3	0	3
	HONG KONG	3	0	3
	INDONESIA	1	0	1
	IRELAND	1	0	1
	ISRAEL	1	0	1
	JAPAN	15	0	15
	KAZAKHSTAN	1	0	1
	KOREA,	1	0	1
	KUWAIT	1	0	1
	MEXICO	6	0	6
	NEPAL	1	0	1
	NEW ZEALAND	4	0	4
PAKISTAN	1	0	1	
Puerto Rico	2	2	4	
RUSSIAN	2	0	2	

		Existing Member(s)	New as of 12/1/2016 or later	Total
STU	SAUDI ARABIA	4	0	4
	SINGAPORE	1	0	1
	SOUTH AFRICA	1	0	1
	SOUTH KOREA	1	0	1
	TAIWAN	3	0	3
	THAILAND	3	0	3
	TURKEY	11	0	11
	UGANDA	1	0	1
	UNITED ARAB	2	0	2
	UNITED	3	0	3
	United States	26	1	27
	UNITED	1	0	1
	Total	937	21	958
STU2	United States	340	10	350
	ALBANIA	2	0	2
	AUSTRALIA	4	0	4
	BRAZIL	2	0	2
	CAMEROON	2	0	2
	CANADA	16	0	16
	CHINA	3	0	3
	FRANCE	1	0	1
	GERMANY	1	0	1
	HAITI	1	0	1
	HONG KONG	2	0	2
	HONG KONG	1	0	1
	INDONESIA	1	0	1
	JAPAN	1	2	3
	Korea, Republic	2	0	2
	KOREA,	1	0	1
	LATVIA	1	0	1
	LEBANON	1	0	1

		Existing Member(s)	New as of 12/1/2016 or later	Total
STU2	MACAO	1	0	1
	NEW ZEALAND	2	0	2
	NIGERIA	1	0	1
	Puerto Rico	1	0	1
	RUSSIA	1	0	1
	SINGAPORE	1	0	1
	SOUTH KOREA	0	1	1
	THAILAND	1	0	1
	UNITED	4	0	4
	United States	15	0	15
	VIET NAM	1	0	1
	VIRGIN	0	1	1
	Total	410	14	424
VKIND	United States	3	273	276
	CAMBODIA	0	1	1
	CANADA	0	24	24
	CHINA	0	6	6
	GERMANY	0	1	1
	ITALY	0	1	1
	MALAYSIA	0	1	1
	MEXICO	0	3	3
	PHILIPPINES	0	2	2
	SPAIN	0	3	3
	THAILAND	0	3	3
	United States	1	5	6
	VIRGIN	0	2	2
	Total	4	325	329
VKIND2	United States	1	4	5
	CANADA	0	1	1
	PHILIPPINES	0	1	1
	Total	1	6	7

	Existing Member(s)	New as of 12/1/2016 or later	Total
Total	11,335	621	11,956

This report is based on members paid through 12/31/2016 or later.

Country/State/Province	Total	
13276030	1	0.0%
AFGHANISTAN	6	0.1%
ALAND ISLANDS	1	0.0%
ALBANIA	5	0.0%
ALGERIA	6	0.1%
ANGOLA	1	0.0%
ARGENTINA	31	0.3%
ARMENIA	6	0.1%
AUSTRALIA	55	0.5%
AUSTRIA	4	0.0%
AZERBAIJAN	4	0.0%
BAHRAIN	4	0.0%
BANGLADESH	16	0.1%
BARBADOS	1	0.0%
BELARUS	2	0.0%
BELIZE	1	0.0%
BENIN	2	0.0%
BERMUDA	1	0.0%
BHUTAN	2	0.0%
BOLIVIA	32	0.3%
BOSNIA AND HERZEGOVINA	1	0.0%
BRAZIL	109	0.9%
BULGARIA	4	0.0%
BURKINA FASO	3	0.0%
CAMBODIA	4	0.0%
CAMEROON	6	0.1%
CANADA		
<i>CANADA</i>	<i>6</i>	
<i>CANADA Alberta</i>	<i>37</i>	
<i>CANADA Armed Frces Americas</i>	<i>1</i>	
<i>CANADA British Columbia</i>	<i>108</i>	
<i>CANADA Manitoba</i>	<i>12</i>	
<i>CANADA New Brunswick</i>	<i>8</i>	
<i>CANADA Newfoundland and Labrador</i>	<i>1</i>	
<i>CANADA Northwest Territories</i>	<i>2</i>	
<i>CANADA Nova Scotia</i>	<i>12</i>	
<i>CANADA Ontario</i>	<i>137</i>	
<i>CANADA Quebec</i>	<i>22</i>	
<i>CANADA Saskatchewan</i>	<i>14</i>	
CANADA	360	3.0%
CAYMAN ISLANDS	1	0.0%
CHILE	16	0.1%
CHINA	165	1.4%
COLOMBIA	37	0.3%
COMOROS	1	0.0%
CONGO	1	0.0%
COSTA RICA	29	0.2%
COTE D'IVOIRE	1	0.0%
CROATIA	4	0.0%
CUBA	2	0.0%
CYPRUS	2	0.0%
CZECH REPUBLIC	4	0.0%
DENMARK	2	0.0%
DOMINICA	2	0.0%
DOMINICAN REPUBLIC	25	0.2%
ECUADOR	120	1.0%
EGYPT	39	0.3%

EL SALVADOR	12	0.1%
ETHIOPIA	2	0.0%
FINLAND	2	0.0%
FRANCE	6	0.1%
GABON	2	0.0%
GEORGIA	24	0.2%
GERMANY	17	0.1%
GHANA	1	0.0%
GREECE	1	0.0%
GRENADA	1	0.0%
GUATEMALA	16	0.1%
GUINEA	1	0.0%
HAITI	9	0.1%
HONDURAS	9	0.1%
HONG KONG	13	0.1%
HONG KONG SAR CHINA	20	0.2%
HUNGARY	7	0.1%
ICELAND	1	0.0%
INDIA	82	0.7%
INDONESIA	19	0.2%
IRAN	9	0.1%
IRAN, ISLAMIC REPUBLIC OF	1	0.0%
IRAQ	13	0.1%
IRELAND	1	0.0%
ISRAEL	9	0.1%
ITALY	14	0.1%
JAMAICA	1	0.0%
JAPAN	336	2.8%
JORDAN	4	0.0%
KAZAKHSTAN	8	0.1%
Korea, Republic Of	17	0.1%
KOREA, REPUBLIC OF	1	0.0%
KOREA, REPUBLIC OF	10	0.1%
KOSOVO (UNMIK)	2	0.0%
KUWAIT	17	0.1%
KYRGYZSTAN	3	0.0%
Lao People's Dem Republic	3	0.0%
LATVIA	4	0.0%
LEBANON	10	0.1%
LIBYA	1	0.0%
LITHUANIA	2	0.0%
LUXEMBOURG	1	0.0%
MACAO	7	0.1%
MACEDONIA	1	0.0%
MADAGASCAR	2	0.0%
MALAYSIA	23	0.2%
MARTINIQUE	1	0.0%
MAURITANIA	3	0.0%
MAURITIUS	1	0.0%
MEXICO	88	0.7%
MOLDOVA, REPUBLIC OF	3	0.0%
MONGOLIA	8	0.1%
MOROCCO	33	0.3%
MYANMAR	3	0.0%
NAMIBIA	1	0.0%
NEPAL	31	0.3%
NETHERLANDS	3	0.0%
NETHERLANDS ANTILLES	1	0.0%
NEW CALEDONIA	1	0.0%
NEW ZEALAND	19	0.2%
NICARAGUA	9	0.1%

NIGER		1	0.0%
NIGERIA		14	0.1%
NORWAY		4	0.0%
OMAN		9	0.1%
PAKISTAN		24	0.2%
PALESTINIAN TERRITORY		4	0.0%
PANAMA		21	0.2%
PARAGUAY		5	0.0%
PEOPLES REP OF CHINA		28	0.2%
PERU		134	1.1%
PHILIPPINES		45	0.4%
POLAND		14	0.1%
PORTUGAL		1	0.0%
Puerto Rico		8	0.1%
QATAR		17	0.1%
ROMANIA		2	0.0%
RUSSIA		9	0.1%
RUSSIAN FEDERATION		17	0.1%
RWANDA		6	0.1%
SAUDI ARABIA		37	0.3%
SENEGAL		3	0.0%
SERBIA		4	0.0%
SIERRA LEONE		1	0.0%
SINGAPORE		13	0.1%
SLOVAKIA		1	0.0%
SOUTH AFRICA		6	0.1%
SOUTH KOREA		22	0.2%
SPAIN		13	0.1%
SRI LANKA		8	0.1%
SUDAN		2	0.0%
SWAZILAND		1	0.0%
SWEDEN		9	0.1%
SWITZERLAND		4	0.0%
SYRIAN ARAB REPUBLIC		1	0.0%
TAIWAN		19	0.2%
TAIWAN ROC		8	0.1%
TANZANIA, UNITED REPUBLIC		1	0.0%
TEHRAN		1	0.0%
THAILAND		44	0.4%
TRINIDAD AND TOBAGO		1	0.0%
TUNISIA		4	0.0%
TURKEY		67	0.6%
UGANDA		3	0.0%
UKRAINE		9	0.1%
UNITED ARAB EMIRATES		39	0.3%
UNITED KINGDOM		36	0.3%
United States		322	2.7%
UNITED STATES OF AMERICA		10	0.1%
URUGUAY		13	0.1%
US MINOR OUTLYING ISLANDS		3	0.0%
USA			
<i>USA</i>		<i>76</i>	
<i>USA</i>	<i>Alabama</i>	<i>92</i>	
<i>USA</i>	<i>Alaska</i>	<i>11</i>	
<i>USA</i>	<i>American Embassy</i>	<i>10</i>	
<i>USA</i>	<i>Arizona</i>	<i>166</i>	
<i>USA</i>	<i>Arkansas</i>	<i>66</i>	
<i>USA</i>	<i>Armed Forces</i>	<i>12</i>	
<i>USA</i>	<i>Armed Frces Americas</i>	<i>3</i>	
<i>USA</i>	<i>California</i>	<i>764</i>	
<i>USA</i>	<i>Colorado</i>	<i>147</i>	

USA	Connecticut	123	
USA	Delaware	86	
USA	District of Columbia	177	
USA	Florida	332	
USA	Georgia	180	
USA	Hawaii	53	
USA	Idaho	43	
USA	Illinois	311	
USA	Indiana	162	
USA	Iowa	120	
USA	Kansas	130	
USA	Kentucky	65	
USA	Louisiana	46	
USA	Maine	47	
USA	Manitoba	1	
USA	Maryland	466	
USA	Massachusetts	308	
USA	Michigan	246	
USA	Minnesota	126	
USA	Mississippi	60	
USA	Missouri	186	
USA	Montana	14	
USA	Nebraska	51	
USA	Nevada	43	
USA	New Hampshire	55	
USA	New Jersey	271	
USA	New Mexico	44	
USA	New York	666	
USA	North Carolina	178	
USA	North Dakota	19	
USA	Ohio	263	
USA	Oklahoma	61	
USA	Ontario	4	
USA	Oregon	247	
USA	Pennsylvania	381	
USA	Prince Edward Island	1	
USA	Puerto Rico	19	
USA	Rhode Island	55	
USA	Saskatchewan	1	
USA	South Carolina	68	
USA	South Dakota	12	
USA	Tennessee	125	
USA	Texas	412	
USA	Utah	90	
USA	Vermont	58	
USA	Virginia	453	
USA	Washington	403	
USA	West Virginia	32	
USA	Wisconsin	131	
USA	Wyoming	6	
USA		8,778	73.2%
UZBEKISTAN		22	0.2%
VANUATU		2	0.0%
VENEZUELA		29	0.2%
VIET NAM		10	0.1%
VIETNAM		8	0.1%
VIRGIN ISLANDS, U.S.		3	0.0%
YEMEN		3	0.0%

Grand Total: _____

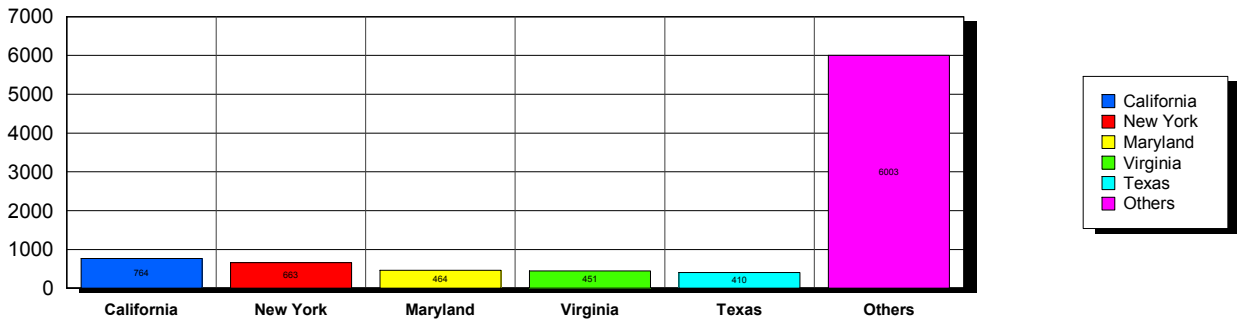
11,992

163 distinct countries represented.

02-geographic.rpt 12/31/2016

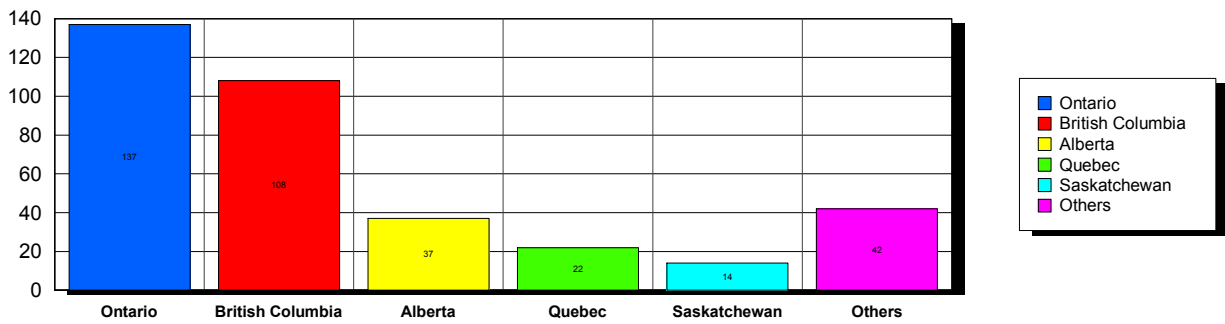
USA

Top 5 States per Country

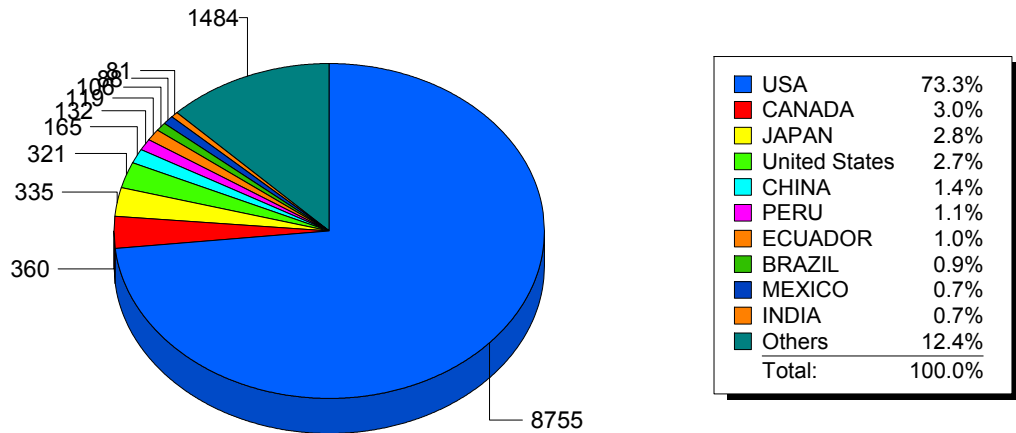


CANADA

Top 5 States per Country



Top 10 Countries



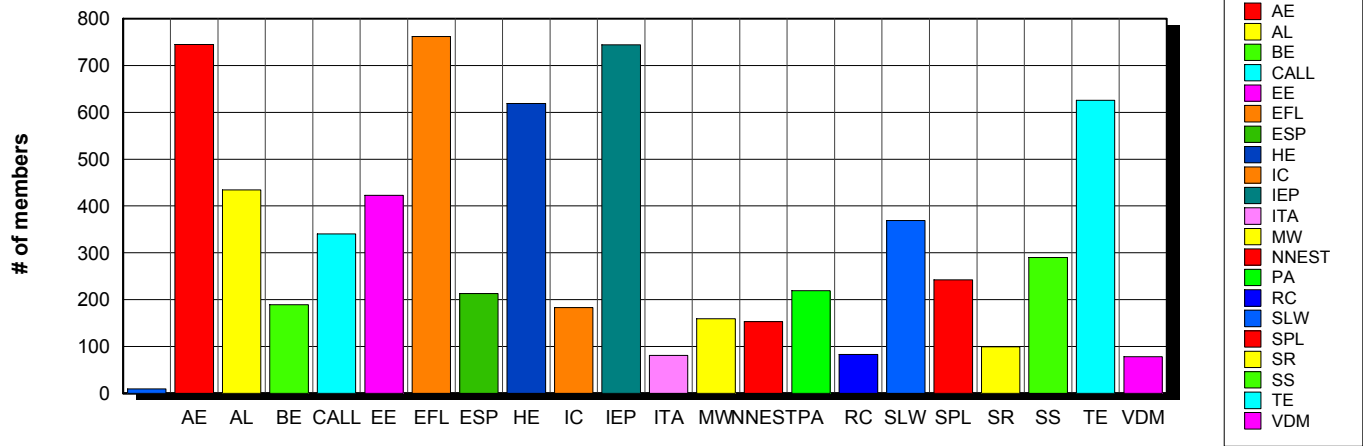
1/18/2017 **Basic statistics on Primary vs. other memberships in interest sections. For members paid through 12/31/2016 or later.**

		<i>Primary versus other</i>		
No Primary Interest Section	0.0%	13	9	4
Adult Education	6.8%	1,945	745	1,200
Applied Linguistics	6.2%	1,783	434	1,349
Bilingual Education	3.4%	978	189	789
Computer-Assisted Language Learning	5.5%	1,597	340	1,257
Elementary Education	3.4%	992	423	569
English as a Foreign Language	7.2%	2,079	762	1,317
English for Specific Purposes	4.7%	1,343	213	1,130
Higher Education	6.7%	1,939	619	1,320
Intercultural Communication	5.2%	1,493	183	1,310
Intensive English Programs	6.7%	1,941	744	1,197
International Teaching Assistants	2.0%	590	81	509
Materials Writers	3.6%	1,041	159	882
Nonnative English Speakers in TESOL	3.0%	865	153	712
Program Administration	3.8%	1,091	219	872
Refugee Concerns	2.4%	700	83	617
Second Language Writing	6.6%	1,891	369	1,522
Speech, Pronunciation, and Listening	5.7%	1,629	242	1,387
Social Responsibility	2.4%	694	99	595
Secondary Schools	3.0%	859	290	569
Teacher Education	7.8%	2,256	626	1,630
Video & Digital Media	3.8%	1,083	78	1,005
<i>7,174 distinct members</i>		Total # of IS memberships	28,802	7,060
				21,742

The total count is the number of IS memberships total and may either be LESS or MORE than the actual number of individual members of TESOL. Due to open access to Interest Sections, these numbers may fluctuate considerably each month. For instance, one member may have selected four interest sections, while some members may belong to none.

Interest Sections

(Primary)

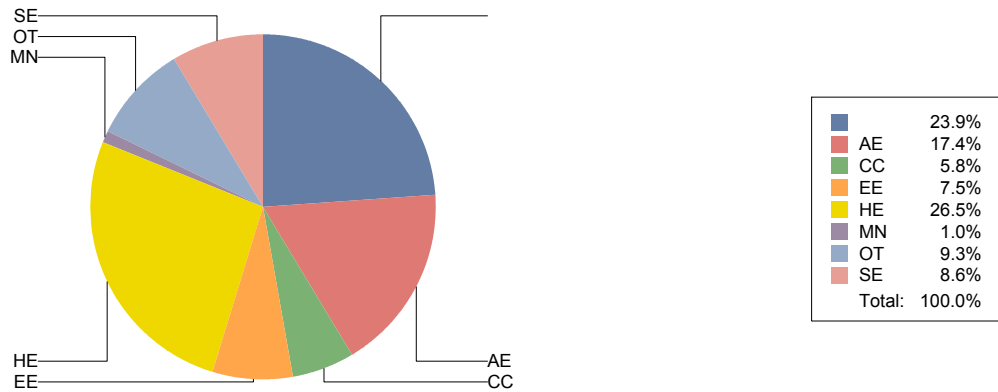


Basic Statistics on Area of Work (Members paid through >= 12/31/2016)

		2,843	23.9%
Adult Education	AE	2,073	17.4%
Community/2yr College	CC	685	5.8%
Elementary Education	EE	892	7.5%
Postsecondary Education	HE	3,149	26.5%
Mainstream	MN	124	1.0%
Other	OT	1,103	9.3%
Secondary Education	SE	1,017	8.6%
		11,886	

Only members who selected an area of work are included on this report. Other members may not have responded to this question and are excluded from the count.

Areas of Work



(Blanks indicate no response)

Statistics on Areas of Interest (Members paid through >= 12/31/2016)

<u>CODE</u>	<u>DESCRIPTION</u>	<u>TOTAL*</u>	<u>% of TOTAL*</u>
IEP	Intensive English Program	11,598	9%
AE	American Embassy	11,454	8%
AL	Applied Linguistics	9,795	7%
HE	Higher Education	9,735	7%
EFL	English as a Foreign Language	8,964	7%
TE	Teacher Education	8,900	7%
IC	Intercultural Communication	6,752	5%
CALL	Computer-Assisted Language Learning	6,692	5%
PA	Program Administration	5,270	4%
ESP	English for Specific Purposes	5,248	4%
EE	Elementary Education	4,135	3%
BE	Bilingual education	3,376	2%
PROFDEV	Professional Development	3,094	2%
SS	Secondary Schools	2,948	2%
SP	Speech/Pronunciation	2,908	2%
ASSESS	Assessment/testing	2,564	2%
CURRICULUM	Materials development/Curriculum	2,218	2%
RS	Research	2,192	2%
WRITING	Writing/composition	1,983	1%
VI	Virgin Islands	1,959	1%
SLA	Second language acquisition	1,913	1%
RC	Refugee Concerns	1,828	1%
ITA	International Teaching Assistants	1,788	1%
CONTENT	Content-based instruction	1,622	1%
GRAMMAR	Grammar	1,497	1%
READING	Reading/literacy	1,399	1%
OTHER	Other	1,365	1%
STANDARDS	Standards	1,302	1%
CERT	TESL/TEFL Certificate Program	969	1%
DISTANCE	Distance learning/Online Education	923	1%
VOCAB	Vocabulary/Lexicon	870	1%
ISKILL	Integrated Skills	855	1%
LISTEN	Listening	773	1%
WORKPLACE	Workplace English instruction/Business English	750	1%
SOCIAL	Social/global/political concerns	709	1%
COMMCOLL	Community college/technical ed	700	1%
LIT	Literature	504	0%
LINGUISTICS	Theoretical Linguistics	449	0%
GRAD	Graduate Student Level	408	0%
NNES	NNES/NES issues	374	0%
FAMILY	Community/family outreach	353	0%
EMPLOYMENT	Employment issues/Certification	330	0%
ACCRED	Accreditation	324	0%
LDSN	Learning Disorders/Special Needs	289	0%
MAINSTREAMING	Mainstreaming	281	0%
PUBLICPOLICY	Public policy	256	0%
ARTS	Arts/Media/Science/Math/Social Science	207	0%

MW	Materials Writers	111	0%
STYLISTICS	Stylistics	73	0%
	No Primary Interest Section	42	0%

Sorted in order of prevalence.

** Note: Members are encouraged to choose multiple areas of interest and some members do not choose any areas of interest. The total number of distinct members (4,138) represented in this report is less than the total number of active members as indicated elsewhere in this report.*

Areas of interest are separate from official TESOL interest sections. Areas of interest represent distinct areas in which a member may be interested, rather than official entities in which a member is involved.

Areas of interest which have a very low count may be recent additions to the AOI list, or may reflect overall trends in membership.

Statistics on Areas of Expertise (Members paid through >= 12/31/2016)

<u>CODE</u>	<u>DESCRIPTION</u>	<u>TOTAL*</u>	<u>% of TOTAL*</u>
IEP	Intensive English Programs	11,598	9%
AE	Adult Education	11,454	8%
AL	Applied Linguistics	9,805	7%
HE	Higher Education	9,735	7%
EFL	English as a foreign language	8,968	7%
TE	Teacher education	8,900	7%
IC	Intercultural Communication	6,752	5%
CALL	Computer-Assisted Language Learning	6,692	5%
PA	Pennsylvania	5,270	4%
ESP	English for Specific Purposes	5,248	4%
EE	Elementary Education	4,135	3%
BE	Bilingual Education	3,380	3%
PROFDEV	Professional development	3,094	2%
SS	Secondary Schools	2,948	2%
SP	Speech/Pronunciation	2,908	2%
ASSESS	Assessment/testing	2,564	2%
CURRICULUM	Materials development/Curriculum	2,219	2%
RS	Research	2,192	2%
WRITING	Writing/composition	1,983	1%
VI	Virgin Islands	1,959	1%
SLA	Second language acquisition	1,913	1%
RC	Refugee Concerns	1,828	1%
ITA	International teaching assistants	1,788	1%
CONTENT	Content-based instruction	1,623	1%
GRAMMAR	Grammar	1,497	1%
READING	Reading/literacy	1,399	1%
OTHER	Other Groups	1,365	1%
STANDARDS	TESOL Standards	1,302	1%
CERT	TESL/TEFL Certificate Program	969	1%
DISTANCE	Distance learning/Online Education	923	1%
VOCAB	Vocabulary/Lexicon	870	1%
ISKILL	Integrated Skills	855	1%
LISTEN	Listening	773	1%
WORKPLACE	Workplace English instruction/Business English	750	1%
SOCIAL	Social/global/political concerns	709	1%
COMMCOLL	Community college/technical ed	700	1%
LIT	Literature	504	0%
LINGUISTICS	Theoretical Linguistics	449	0%
GRAD	Graduate Student Level	409	0%
NNES	NNES/NES issues	374	0%
FAMILY	Community/family outreach	353	0%
EMPLOYMENT	Employment issues/Certification	330	0%
ACCRED	Accreditation	324	0%
LDSN	Learning Disorders/Special Needs	289	0%
MAINSTREAMING	Mainstreaming	281	0%
PUBLICPOLICY	Public policy	256	0%
ARTS	Arts/Media/Science/Math/Social Science	207	0%

MW	Materials Writers	111	0%
STYLISTICS	Stylistics	73	0%
	No Primary Interest Section	42	0%

Sorted in order of prevalence.

** Note: Members are encouraged to choose multiple areas of expertise and some members do not choose any areas of expertise. The total number of distinct members (4,139) represented in this report is less than the total number of active members as indicated elsewhere in this report.*

Areas of Expertise are separate from official TESOL interest sections or Areas of Interest. Areas of expertise represent distinct areas in which a member may be experienced in, rather than official entities in which a member is involved.

Areas of interest which have a very low count may be recent additions to the AOI list, or may reflect overall trends in membership.