

3/10/2016

Membership Statistics: Grand totals for basic membership, by member type and country

		<u># Memberships</u>	<u># Members</u>
IND	BASIC		
	Existing Member(s)	4,356	4,356
	New as of 2/1/2016 or later	280	280
IND	BASIC	4,636	4,636

IND2	BASIC		
	Existing Member(s)	2,040	2,040
	New as of 2/1/2016 or later	17	17
IND2	BASIC	2,057	2,057

STU	BASIC		
	Existing Member(s)	776	776
	New as of 2/1/2016 or later	113	113
STU	BASIC	889	889

STU2	BASIC		
	Existing Member(s)	408	408
	New as of 2/1/2016 or later	12	12
STU2	BASIC	420	420

LIF	BASIC		
	Existing Member(s)	51	51
LIF	BASIC	51	51

RET	BASIC		
	Existing Member(s)	149	149
RET	BASIC	149	149

RET2	BASIC		
	Existing Member(s)	101	101
RET2	BASIC	101	101

PTR	BASIC		
	Existing Member(s)	433	433
	New as of 2/1/2016 or later	29	29
PTR	BASIC	462	462

PTR2	BASIC		
	Existing Member(s)	258	258
	New as of 2/1/2016 or later	1	1
PTR2	BASIC	259	259

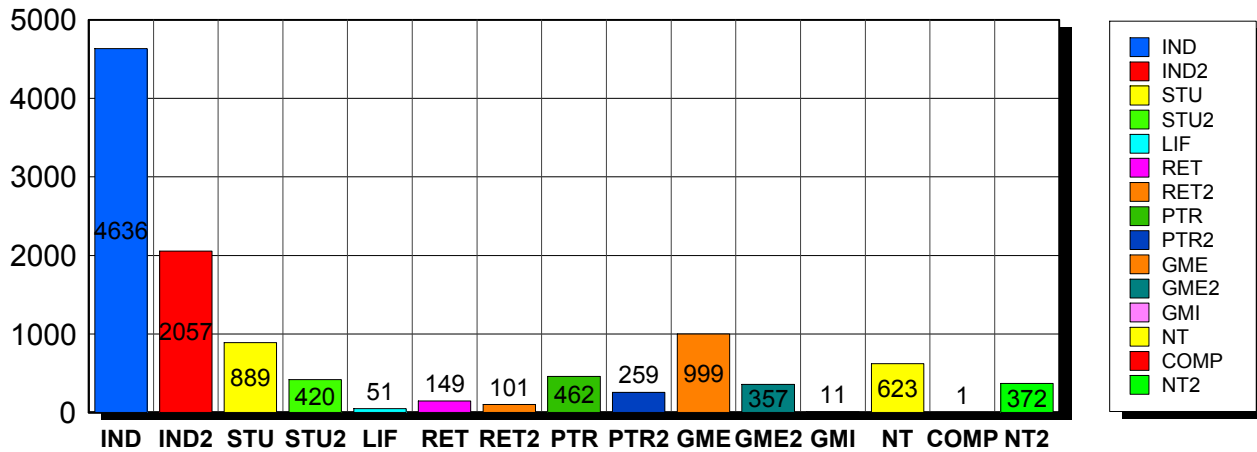
GME	BASIC		
	Existing Member(s)	862	862
	New as of 2/1/2016 or later	137	137
GME	BASIC	999	999

GME2	BASIC		
	Existing Member(s)	354	354
	New as of 2/1/2016 or later	3	3
GME2	BASIC	357	357

GMI	BASIC		

	Existing Member(s)	4	4
	New as of 2/1/2016 or later	7	7
GMI	BASIC	11	11
<hr/>			
NT	BASIC		
	Existing Member(s)	561	561
	New as of 2/1/2016 or later	62	62
NT	BASIC	623	623
<hr/>			
COMP	BASIC		
	Existing Member(s)	1	1
COMP	BASIC	1	1
<hr/>			
NT2	BASIC		
	Existing Member(s)	366	366
	New as of 2/1/2016 or later	6	6
NT2	BASIC	372	372
<hr/>			
Grand Total:		11,387	11,387

Member Types



Note: in all general statistic reports, joint household memberships are treated as "one" member EXCEPT in the second column of this report, where joints are counted as two people, providing the most accurate count of the number of TESOL members.

		Existing Member(s)	New as of 2/1/2016 or later	Total
COMP	United States	1	0	1
	Total	1	0	1
GME	United States	24	10	34
	AFGHANISTAN	1	0	1
	ALBANIA	2	0	2
	ALGERIA	4	0	4
	ARGENTINA	19	3	22

		Existing Member(s)	New as of 2/1/2016 or later	Total
GME	ARMENIA	1	0	1
	AZERBAIJAN	6	0	6
	BAHRAIN	0	1	1
	BANGLADESH	33	0	33
	BELIZE	2	0	2
	BOLIVIA	16	0	16
	BOSNIA AND	0	1	1
	BRAZIL	49	5	54
	BULGARIA	3	0	3
	CAMBODIA	3	1	4
	CAMEROON	2	0	2
	CHILE	9	0	9
	CHINA	82	11	93
	COLOMBIA	11	1	12
	COSTA RICA	12	3	15
	CROATIA	5	0	5
	DOMINICAN	4	0	4
	ECUADOR	84	10	94
	EGYPT	15	1	16
	EL SALVADOR	0	1	1
	GEORGIA	3	0	3
	GHANA	1	0	1
	GUATEMALA	10	1	11
	HAITI	10	1	11
	HONDURAS	2	2	4
	HONG KONG	1	0	1
	HUNGARY	2	0	2
INDIA	54	0	54	
INDONESIA	4	0	4	
IRAN	3	0	3	
IRAQ	2	1	3	

		Existing Member(s)	New as of 2/1/2016 or later	Total
GME	ISRAEL	0	1	1
	JAMAICA	2	0	2
	JAPAN	0	1	1
	JORDAN	2	0	2
	KAZAKHSTAN	1	0	1
	KUWAIT	1	0	1
	KYRGYZSTAN	1	0	1
	LATVIA	0	1	1
	LEBANON	5	1	6
	MACEDONIA	0	1	1
	MADAGASCAR	2	0	2
	MALAYSIA	15	0	15
	MALI	1	0	1
	MAURITANIA	4	0	4
	MEXICO	52	11	63
	MOLDOVA,	2	0	2
	MONGOLIA	3	0	3
	MOROCCO	16	13	29
	MOZAMBIQUE	1	0	1
	MYANMAR	1	0	1
	NEPAL	11	2	13
	NEW ZEALAND	1	0	1
	NICARAGUA	2	0	2
	NIGERIA	4	1	5
	NORWAY	1	0	1
	PAKISTAN	20	0	20
	PALESTINIAN	2	1	3
	PANAMA	16	2	18
	PARAGUAY	3	0	3
	PEOPLES REP	23	1	24
PERU	64	36	100	

		Existing Member(s)	New as of 2/1/2016 or later	Total
GME	PHILIPPINES	12	0	12
	POLAND	4	0	4
	ROMANIA	1	1	2
	RUSSIA	6	0	6
	RUSSIAN	7	3	10
	RWANDA	1	1	2
	SAUDI ARABIA	1	0	1
	SERBIA	5	1	6
	SLOVAKIA	1	0	1
	SOUTH AFRICA	2	0	2
	SRI LANKA	1	0	1
	SUDAN	2	0	2
	SWAZILAND	1	0	1
	SYRIAN ARAB	1	0	1
	TAIWAN ROC	3	0	3
	THAILAND	10	2	12
	TUNISIA	2	1	3
	TURKEY	21	0	21
	UKRAINE	9	1	10
	United States	3	0	3
	UNITED	7	0	7
	URUGUAY	6	0	6
	UZBEKISTAN	1	0	1
	VENEZUELA	13	2	15
VIET NAM	1	0	1	
VIETNAM	5	0	5	
YEMEN	1	0	1	
Total	862	137	999	
GME2	United States	5	0	5
	AFGHANISTAN	1	0	1
	ALBANIA	2	0	2

		Existing Member(s)	New as of 2/1/2016 or later	Total
GME2	ANGOLA	1	0	1
	ARGENTINA	3	0	3
	ARMENIA	1	0	1
	BANGLADESH	2	0	2
	BELARUS	1	0	1
	BOLIVIA	4	0	4
	BRAZIL	20	0	20
	BULGARIA	4	0	4
	BURKINA FASO	1	0	1
	CAMEROON	1	0	1
	CHILE	7	0	7
	CHINA	49	0	49
	COLOMBIA	9	0	9
	COSTA RICA	5	0	5
	CUBA	1	0	1
	DOMINICAN	9	0	9
	ECUADOR	17	0	17
	EGYPT	2	1	3
	GABON	2	0	2
	GEORGIA	1	0	1
	GRENADA	2	0	2
	GUATEMALA	1	0	1
	HONDURAS	1	0	1
	INDIA	24	0	24
	INDONESIA	5	0	5
	IRAQ	1	0	1
	JORDAN	3	0	3
	KAZAKHSTAN	4	0	4
	LATVIA	1	1	2
	LEBANON	2	0	2
LITHUANIA	1	0	1	

		Existing Member(s)	New as of 2/1/2016 or later	Total
GME2	MADAGASCAR	1	0	1
	MALAYSIA	5	0	5
	MARSHALL	1	0	1
	MAURITIUS	1	0	1
	MEXICO	24	0	24
	MONGOLIA	6	0	6
	MOROCCO	3	0	3
	NAMIBIA	1	0	1
	NEPAL	3	0	3
	NIGER	1	0	1
	NIGERIA	5	0	5
	PAKISTAN	4	0	4
	PANAMA	1	0	1
	PARAGUAY	1	0	1
	PEOPLES REP	1	0	1
	PERU	7	0	7
	PHILIPPINES	8	0	8
	POLAND	5	0	5
	RUSSIA	1	0	1
	RUSSIAN	6	0	6
	SENEGAL	1	0	1
	SIERRA LEONE	1	0	1
	SRI LANKA	2	0	2
	SURINAME	1	0	1
	TAIWAN ROC	2	0	2
	TAJIKISTAN	2	0	2
	THAILAND	13	1	14
	TUNISIA	3	0	3
	TURKEY	19	0	19
	United States	1	0	1
UNITED	2	0	2	

		Existing Member(s)	New as of 2/1/2016 or later	Total
GME2	URUGUAY	2	0	2
	UZBEKISTAN	19	0	19
	VENEZUELA	2	0	2
	VIET NAM	1	0	1
	VIETNAM	4	0	4
	YEMEN	1	0	1
	Total	354	3	357
GMI	BELARUS	0	1	1
	BRAZIL	0	2	2
	CHINA	1	1	2
	HUNGARY	0	1	1
	KOSOVO	0	1	1
	MEXICO	1	0	1
	PERU	2	1	3
	Total	4	7	11
IND	United States	3,281	202	3,483
	02453-2728	1	0	1
	ARGENTINA	0	1	1
	AUSTRALIA	17	3	20
	BAHRAIN	1	0	1
	BERMUDA	1	1	2
	BRAZIL	3	1	4
	CANADA	163	9	172
	CHILE	1	1	2
	CHINA	6	0	6
	COLOMBIA	2	0	2
	COSTA RICA	1	0	1
	CYPRUS	1	0	1
	CZECH	5	0	5
	DENMARK	3	0	3
	ECUADOR	1	0	1

		Existing Member(s)	New as of 2/1/2016 or later	Total
IND	EGYPT	3	1	4
	FINLAND	0	1	1
	FRANCE	2	0	2
	GERMANY	6	0	6
	GREECE	1	0	1
	HONG KONG	4	0	4
	HONG KONG	3	0	3
	HUNGARY	2	0	2
	INDIA	2	0	2
	IRAN	0	1	1
	IRELAND	1	0	1
	ISRAEL	6	0	6
	ITALY	7	0	7
	JAPAN	179	1	180
	JORDAN	3	0	3
	Korea, Republic	6	0	6
	KOREA,	1	0	1
	KOREA,	5	0	5
	KOSOVO	1	1	2
	KUWAIT	6	0	6
	LEBANON	1	0	1
	LIBYA	1	0	1
	MACAO	1	0	1
	MALAYSIA	2	0	2
	MEXICO	4	0	4
	NETHERLAND	3	0	3
	NEW ZEALAND	6	0	6
	NIGERIA	4	0	4
	NORWAY	5	0	5
	OMAN	3	1	4
PAKISTAN	2	0	2	

		Existing Member(s)	New as of 2/1/2016 or later	Total
IND	PALESTINIAN	1	0	1
	PARAGUAY	1	0	1
	PEOPLES REP	2	0	2
	PERU	3	0	3
	PHILIPPINES	1	0	1
	PORTUGAL	1	0	1
	Puerto Rico	10	0	10
	QATAR	14	0	14
	SAUDI ARABIA	14	1	15
	SINGAPORE	4	0	4
	SLOVAKIA	0	1	1
	SOUTH AFRICA	2	0	2
	SOUTH KOREA	7	0	7
	SPAIN	6	0	6
	SWEDEN	7	0	7
	SWITZERLAND	0	1	1
	TAIWAN	6	0	6
	TAIWAN ROC	2	1	3
	THAILAND	1	2	3
	TRINIDAD AND	1	0	1
	UNITED ARAB	29	0	29
	UNITED	10	1	11
	United States	13	0	13
	UNITED	460	49	509
URUGUAY	1	0	1	
VIET NAM	2	0	2	
VIETNAM	1	0	1	
Total	4,356	280	4,636	
IND2	United States	1,535	12	1,547
	AUSTRALIA	17	0	17
	AUSTRIA	2	0	2

		Existing Member(s)	New as of 2/1/2016 or later	Total
IND2	BAHRAIN	2	0	2
	BENIN	1	0	1
	BRAZIL	3	0	3
	CANADA	99	0	99
	CAYMAN	1	0	1
	CHILE	1	0	1
	CHINA	6	0	6
	COLOMBIA	2	0	2
	COSTA RICA	1	0	1
	CYPRUS	1	0	1
	DENMARK	0	1	1
	FINLAND	1	0	1
	FRANCE	1	0	1
	GERMANY	6	0	6
	GREECE	1	0	1
	HONG KONG	4	0	4
	HONG KONG	7	0	7
	INDIA	2	0	2
	IRAQ	1	0	1
	ITALY	4	0	4
	JAPAN	92	0	92
	Korea, Republic	2	0	2
	KOREA,	3	0	3
	KUWAIT	3	0	3
	Lao People's	1	0	1
	LUXEMBOURG	1	0	1
	MACAO	4	0	4
	MALAYSIA	3	0	3
	MARTINIQUE	1	0	1
	NETHERLAND	1	0	1
NEW	1	0	1	

		Existing Member(s)	New as of 2/1/2016 or later	Total
IND2	NEW ZEALAND	3	0	3
	NICARAGUA	0	1	1
	NIGERIA	1	0	1
	NORWAY	1	0	1
	OMAN	1	0	1
	QATAR	14	0	14
	ROMANIA	1	0	1
	SAUDI ARABIA	9	0	9
	SERBIA	1	0	1
	SINGAPORE	3	0	3
	SLOVAKIA	2	0	2
	SOUTH KOREA	6	0	6
	SPAIN	1	0	1
	SWITZERLAND	2	0	2
	TAIWAN	6	0	6
	TAIWAN ROC	2	0	2
	THAILAND	2	0	2
	TRINIDAD AND	1	0	1
	TURKEY	2	0	2
	UKRAINE	1	1	2
	UNITED ARAB	11	0	11
	UNITED	6	0	6
	UNITED	151	2	153
	URUGUAY	2	0	2
VENEZUELA	1	0	1	
Total	2,040	17	2,057	
LIF	United States	40	0	40
	AUSTRALIA	1	0	1
	CANADA	2	0	2
	EGYPT	1	0	1
	ISRAEL	1	0	1

		Existing Member(s)	New as of 2/1/2016 or later	Total
LIF	JAPAN	1	0	1
	UNITED ARAB	1	0	1
	UNITED	2	0	2
	UNITED	2	0	2
	Total	51	0	51
NT	United States	365	44	409
	AUSTRALIA	3	0	3
	AUSTRIA	1	0	1
	CANADA	14	1	15
	CHINA	3	0	3
	COLOMBIA	1	0	1
	ECUADOR	2	0	2
	GERMANY	1	0	1
	GREECE	1	0	1
	HONG KONG	1	0	1
	IRAQ	1	0	1
	ITALY	1	1	2
	JAPAN	15	0	15
	KUWAIT	1	0	1
	MARTINIQUE	1	0	1
	MATARA	1	0	1
	NEW ZEALAND	1	0	1
	PERU	1	0	1
	QATAR	2	1	3
	RUSSIA	1	0	1
	RUSSIAN	0	1	1
	SAUDI ARABIA	2	0	2
	SINGAPORE	1	0	1
	SOUTH KOREA	2	0	2
SPAIN	1	0	1	
THAILAND	1	0	1	

		Existing Member(s)	New as of 2/1/2016 or later	Total
NT	TURKEY	1	0	1
	UNITED	2	0	2
	UNITED	134	14	148
	Total	561	62	623
NT2	United States	297	3	300
	AUSTRALIA	4	0	4
	CANADA	8	1	9
	HONG KONG	1	0	1
	HONG KONG	1	0	1
	HUNGARY	1	0	1
	ITALY	1	0	1
	JAPAN	3	0	3
	KOREA,	1	0	1
	KUWAIT	1	0	1
	MACAO	1	0	1
	SAUDI ARABIA	1	0	1
	SINGAPORE	2	0	2
	SOUTH KOREA	1	0	1
	TAIWAN	2	0	2
	UNITED ARAB	1	0	1
	UNITED	1	0	1
	UNITED	39	2	41
	Total	366	6	372
PTR	United States	290	17	307
	AUSTRALIA	1	0	1
	BRAZIL	3	0	3
	CANADA	15	1	16
	CHILE	1	0	1
	CHINA	7	0	7
	COLOMBIA	2	1	3
	COSTA RICA	1	1	2

		Existing Member(s)	New as of 2/1/2016 or later	Total
PTR	DOMINICAN	2	0	2
	ECUADOR	8	1	9
	EGYPT	1	0	1
	FRANCE	1	0	1
	GERMANY	1	0	1
	GREECE	1	0	1
	HAITI	1	0	1
	ICELAND	0	1	1
	INDONESIA	2	0	2
	IRAQ	1	0	1
	JAPAN	9	1	10
	KUWAIT	1	0	1
	Lao People's	1	0	1
	LITHUANIA	1	0	1
	MACAO	1	0	1
	MOROCCO	1	0	1
	NEW ZEALAND	1	0	1
	NICARAGUA	1	0	1
	NORTHERN	1	0	1
	PAKISTAN	1	0	1
	PERU	1	0	1
	PHILIPPINES	1	1	2
	POLAND	1	0	1
	Puerto Rico	5	0	5
	SAUDI ARABIA	1	0	1
	SINGAPORE	1	0	1
	SLOVENIA	1	0	1
	SOUTH AFRICA	1	0	1
	SOUTH KOREA	1	0	1
	SPAIN	2	0	2
TAIWAN	1	0	1	

		Existing Member(s)	New as of 2/1/2016 or later	Total
PTR	TANZANIA,	4	0	4
	THAILAND	1	0	1
	TURKEY	5	0	5
	UNITED ARAB	3	0	3
	UNITED	4	0	4
	UNITED	43	5	48
	VENEZUELA	1	0	1
	Total	433	29	462
PTR2	United States	193	1	194
	BRAZIL	2	0	2
	CANADA	10	0	10
	CHILE	1	0	1
	CHINA	3	0	3
	COLOMBIA	1	0	1
	CZECH	1	0	1
	GERMANY	1	0	1
	HONG KONG	1	0	1
	INDONESIA	1	0	1
	ISRAEL	1	0	1
	ITALY	1	0	1
	JAPAN	2	0	2
	MACAO	1	0	1
	MEXICO	1	0	1
	PHILIPPINES	1	0	1
	POLAND	1	0	1
	SAUDI ARABIA	7	0	7
	TAIWAN	5	0	5
	THAILAND	1	0	1
	TURKEY	5	0	5
	UNITED ARAB	1	0	1
UNITED	17	0	17	

		Existing Member(s)	New as of 2/1/2016 or later	Total
PTR2	Total	258	1	259
RET	United States	128	0	128
	BRAZIL	1	0	1
	CANADA	4	0	4
	COLOMBIA	1	0	1
	GERMANY	1	0	1
	JAPAN	2	0	2
	MEXICO	1	0	1
	PORTUGAL	1	0	1
	SRI LANKA	1	0	1
	UNITED	9	0	9
	Total	149	0	149
RET2	United States	83	0	83
	AUSTRALIA	1	0	1
	CANADA	1	0	1
	GERMANY	1	0	1
	ISRAEL	4	0	4
	JAPAN	4	0	4
	SOUTH KOREA	1	0	1
	SPAIN	1	0	1
	UNITED	2	0	2
	UNITED	3	0	3
	Total	101	0	101
STU	United States	557	77	634
	AUSTRALIA	10	0	10
	BELGIUM	1	0	1
	BRAZIL	0	1	1
	CANADA	27	4	31
	CHINA	4	0	4
	COLOMBIA	0	1	1
	GERMANY	3	1	4

		Existing Member(s)	New as of 2/1/2016 or later	Total
STU	GHANA	1	0	1
	HAITI	1	0	1
	HONG KONG	2	0	2
	HONG KONG	2	1	3
	INDONESIA	1	0	1
	JAPAN	9	2	11
	Korea, Republic	1	0	1
	MALAYSIA	1	0	1
	MEXICO	2	0	2
	NEW ZEALAND	2	0	2
	PHILIPPINES	2	0	2
	POLAND	1	0	1
	RUSSIAN	2	0	2
	SAUDI ARABIA	2	0	2
	SOUTH AFRICA	0	1	1
	SOUTH KOREA	3	0	3
	TAIWAN	0	1	1
	THAILAND	2	0	2
	TURKEY	7	3	10
	UNITED ARAB	0	1	1
	UNITED	7	1	8
United States	1	0	1	
UNITED	125	19	144	
Total	776	113	889	
STU2	United States	320	11	331
	ALBANIA	2	0	2
	AUSTRALIA	4	0	4
	BRAZIL	2	0	2
	CAMEROON	2	0	2
	CANADA	17	0	17
	CHINA	2	0	2

		Existing Member(s)	New as of 2/1/2016 or later	Total
STU2	FRANCE	1	0	1
	GERMANY	1	0	1
	HONG KONG	2	0	2
	HONG KONG	1	0	1
	INDONESIA	1	0	1
	ISRAEL	1	0	1
	JAPAN	3	0	3
	Korea, Republic	1	0	1
	KOREA,	1	0	1
	LEBANON	1	0	1
	MEXICO	1	0	1
	NEPAL	1	0	1
	OMAN	1	0	1
	Puerto Rico	1	0	1
	SINGAPORE	1	0	1
	TAIWAN ROC	1	0	1
	UNITED	4	0	4
	UNITED	36	1	37
	Total	408	12	420
Total		10,720	667	11,387

This report is based on members paid through 2/29/2016 or later.

Country/State/Province	Total	
02453-2728	1	0.0%
AFGHANISTAN	2	0.0%
ALBANIA	6	0.1%
ALGERIA	4	0.0%
ANGOLA	1	0.0%
ARGENTINA	26	0.2%
ARMENIA	2	0.0%
AUSTRALIA	61	0.5%
AUSTRIA	3	0.0%
AZERBAIJAN	6	0.1%
BAHRAIN	4	0.0%
BANGLADESH	35	0.3%
BELARUS	2	0.0%
BELGIUM	1	0.0%
BELIZE	2	0.0%
BENIN	1	0.0%
BERMUDA	2	0.0%
BOLIVIA	20	0.2%
BOSNIA AND HERZEGOVINA	1	0.0%
BRAZIL	92	0.8%
BULGARIA	7	0.1%
BURKINA FASO	1	0.0%
CAMBODIA	4	0.0%
CAMEROON	5	0.0%
CANADA		
<i>CANADA</i>	<i>4</i>	
<i>CANADA Alberta</i>	<i>27</i>	
<i>CANADA British Columbia</i>	<i>85</i>	
<i>CANADA Manitoba</i>	<i>12</i>	
<i>CANADA Montana</i>	<i>1</i>	
<i>CANADA New Brunswick</i>	<i>8</i>	
<i>CANADA Northwest Territories</i>	<i>1</i>	
<i>CANADA Nova Scotia</i>	<i>13</i>	
<i>CANADA Ontario</i>	<i>176</i>	
<i>CANADA Quebec</i>	<i>30</i>	
<i>CANADA Saskatchewan</i>	<i>18</i>	
<i>CANADA Yukon Territory</i>	<i>1</i>	
CANADA	376	3.3%
CAYMAN ISLANDS	1	0.0%
CHILE	21	0.2%
CHINA	175	1.5%
COLOMBIA	32	0.3%
COSTA RICA	24	0.2%
CROATIA	5	0.0%
CUBA	1	0.0%
CYPRUS	2	0.0%
CZECH REPUBLIC	6	0.1%
DENMARK	4	0.0%
DOMINICAN REPUBLIC	15	0.1%
ECUADOR	123	1.1%
EGYPT	25	0.2%
EL SALVADOR	1	0.0%
FINLAND	2	0.0%
FRANCE	5	0.0%
GABON	2	0.0%
GEORGIA	4	0.0%
GERMANY	22	0.2%

GHANA	2	0.0%
GREECE	4	0.0%
GRENADA	2	0.0%
GUATEMALA	12	0.1%
HAITI	13	0.1%
HONDURAS	5	0.0%
HONG KONG	14	0.1%
HONG KONG SAR CHINA	17	0.1%
HUNGARY	6	0.1%
ICELAND	1	0.0%
INDIA	82	0.7%
INDONESIA	14	0.1%
IRAN	4	0.0%
IRAQ	7	0.1%
IRELAND	1	0.0%
ISRAEL	14	0.1%
ITALY	15	0.1%
JAMAICA	2	0.0%
JAPAN	324	2.8%
JORDAN	8	0.1%
KAZAKHSTAN	5	0.0%
Korea, Republic Of	10	0.1%
KOREA, REPUBLIC OF	1	0.0%
KOREA, REPUBLIC OF	10	0.1%
KOSOVO (UNMIK)	4	0.0%
KUWAIT	13	0.1%
KYRGYZSTAN	1	0.0%
Lao People's Dem Republic	2	0.0%
LATVIA	3	0.0%
LEBANON	10	0.1%
LIBYA	1	0.0%
LITHUANIA	2	0.0%
LUXEMBOURG	1	0.0%
MACAO	8	0.1%
MACEDONIA	1	0.0%
MADAGASCAR	3	0.0%
MALAYSIA	26	0.2%
MALI	1	0.0%
MARSHALL ISLANDS	1	0.0%
MARTINIQUE	2	0.0%
MATARA	1	0.0%
MAURITANIA	4	0.0%
MAURITIUS	1	0.0%
MEXICO	97	0.9%
MOLDOVA, REPUBLIC OF	2	0.0%
MONGOLIA	9	0.1%
MOROCCO	33	0.3%
MOZAMBIQUE	1	0.0%
MYANMAR	1	0.0%
NAMIBIA	1	0.0%
NEPAL	17	0.1%
NETHERLANDS	4	0.0%
NEW CALEDONIA	1	0.0%
NEW ZEALAND	14	0.1%
NICARAGUA	4	0.0%
NIGER	1	0.0%
NIGERIA	15	0.1%
NORTHERN MARIANA ISLANDS	1	0.0%
NORWAY	7	0.1%
OMAN	6	0.1%
PAKISTAN	27	0.2%

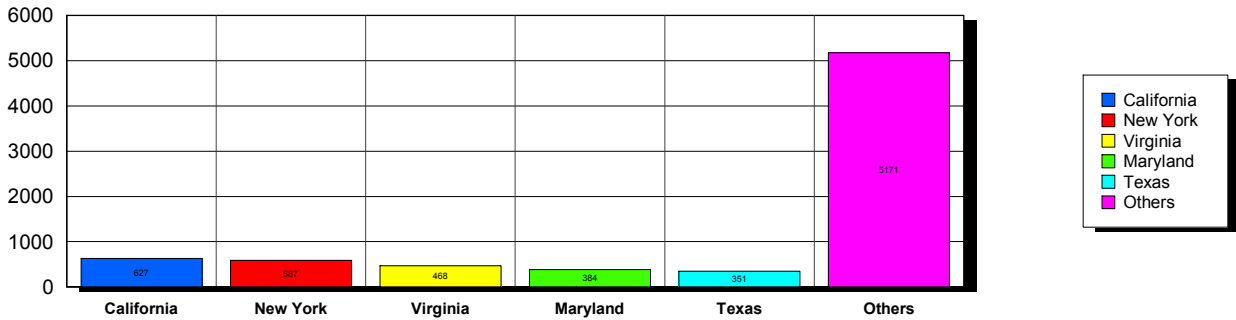
PALESTINIAN TERRITORY	4	0.0%
PANAMA	19	0.2%
PARAGUAY	5	0.0%
PEOPLES REP OF CHINA	27	0.2%
PERU	116	1.0%
PHILIPPINES	26	0.2%
POLAND	12	0.1%
PORTUGAL	2	0.0%
Puerto Rico	16	0.1%
OATAR	31	0.3%
ROMANIA	3	0.0%
RUSSIA	8	0.1%
RUSSIAN FEDERATION	19	0.2%
RWANDA	2	0.0%
SAUDI ARABIA	38	0.3%
SENEGAL	1	0.0%
SERBIA	7	0.1%
SIERRA LEONE	1	0.0%
SINGAPORE	12	0.1%
SLOVAKIA	4	0.0%
SLOVENIA	1	0.0%
SOUTH AFRICA	6	0.1%
SOUTH KOREA	21	0.2%
SPAIN	11	0.1%
SRI LANKA	4	0.0%
SUDAN	2	0.0%
SURINAME	1	0.0%
SWAZILAND	1	0.0%
SWEDEN	7	0.1%
SWITZERLAND	3	0.0%
SYRIAN ARAB REPUBLIC	1	0.0%
TAIWAN	21	0.2%
TAIWAN ROC	11	0.1%
TAJIKISTAN	2	0.0%
TANZANIA, UNITED REPUBLIC	4	0.0%
THAILAND	36	0.3%
TRINIDAD AND TOBAGO	2	0.0%
TUNISIA	6	0.1%
TURKEY	63	0.6%
UKRAINE	12	0.1%
UNITED ARAB EMIRATES	47	0.4%
UNITED KINGDOM	40	0.4%
United States	18	0.2%
UNITED STATES OF AMERICA	1,120	9.8%
URUGUAY	11	0.1%
USA		
<i>USA</i>	<i>44</i>	
<i>USA</i>	<i>Alabama</i>	<i>80</i>
<i>USA</i>	<i>Alaska</i>	<i>10</i>
<i>USA</i>	<i>American Embassy</i>	<i>10</i>
<i>USA</i>	<i>Arizona</i>	<i>128</i>
<i>USA</i>	<i>Arkansas</i>	<i>58</i>
<i>USA</i>	<i>Armed Forces</i>	<i>4</i>
<i>USA</i>	<i>Armed Frces Americas</i>	<i>1</i>
<i>USA</i>	<i>British Columbia</i>	<i>2</i>
<i>USA</i>	<i>California</i>	<i>619</i>
<i>USA</i>	<i>Colorado</i>	<i>117</i>
<i>USA</i>	<i>Connecticut</i>	<i>123</i>
<i>USA</i>	<i>Delaware</i>	<i>75</i>
<i>USA</i>	<i>District of Columbia</i>	<i>168</i>
<i>USA</i>	<i>Florida</i>	<i>292</i>

USA	Georgia	137	
USA	Guam	2	
USA	Hawaii	47	
USA	Idaho	41	
USA	Illinois	285	
USA	Indiana	142	
USA	Iowa	91	
USA	Kansas	132	
USA	Kentucky	63	
USA	Louisiana	35	
USA	Maine	35	
USA	Maryland	381	
USA	Massachusetts	306	
USA	Michigan	228	
USA	Minnesota	121	
USA	Mississippi	54	
USA	Missouri	169	
USA	Montana	10	
USA	Nebraska	47	
USA	Nevada	37	
USA	New Hampshire	52	
USA	New Jersey	222	
USA	New Mexico	39	
USA	New York	579	
USA	North Carolina	140	
USA	North Dakota	16	
USA	Ohio	242	
USA	Oklahoma	43	
USA	Ontario	2	
USA	Oregon	193	
USA	Pennsylvania	339	
USA	Puerto Rico	16	
USA	Quebec	1	
USA	Rhode Island	45	
USA	South Carolina	34	
USA	South Dakota	9	
USA	Tennessee	89	
USA	Texas	348	
USA	Utah	73	
USA	Vermont	53	
USA	Virginia	462	
USA	Washington	243	
USA	West Virginia	36	
USA	Wisconsin	117	
USA	Wyoming	11	
USA		7,498	65.8%
UZBEKISTAN		20	0.2%
VENEZUELA		19	0.2%
VIET NAM		4	0.0%
VIETNAM		10	0.1%
YEMEN		2	0.0%
Grand Total:		11,391	

156 distinct countries represented.

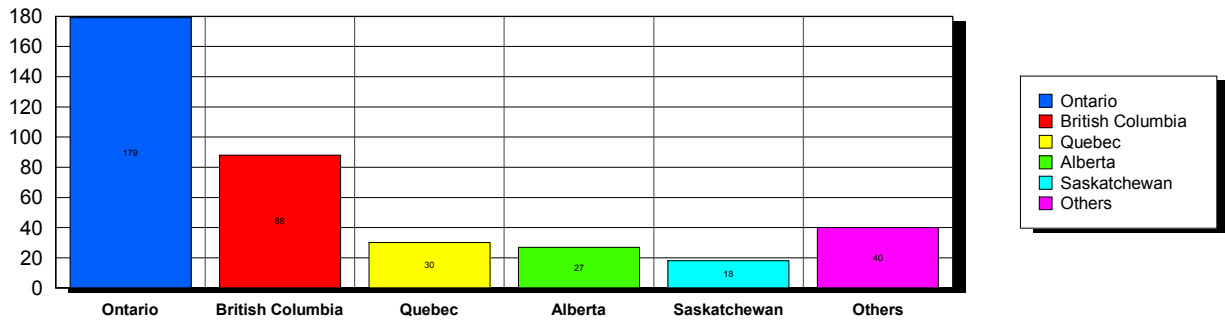
USA

Top 5 States per Country

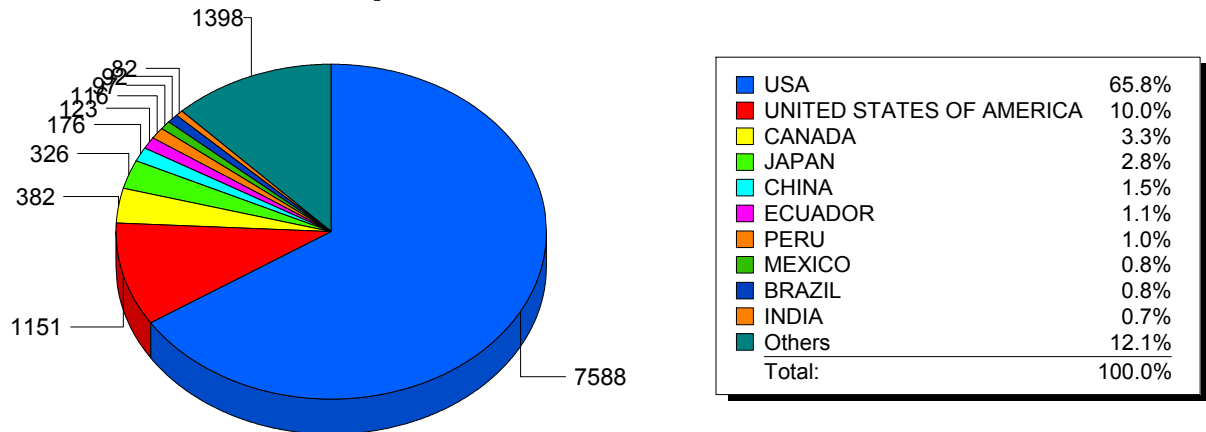


CANADA

Top 5 States per Country



Top 10 Countries



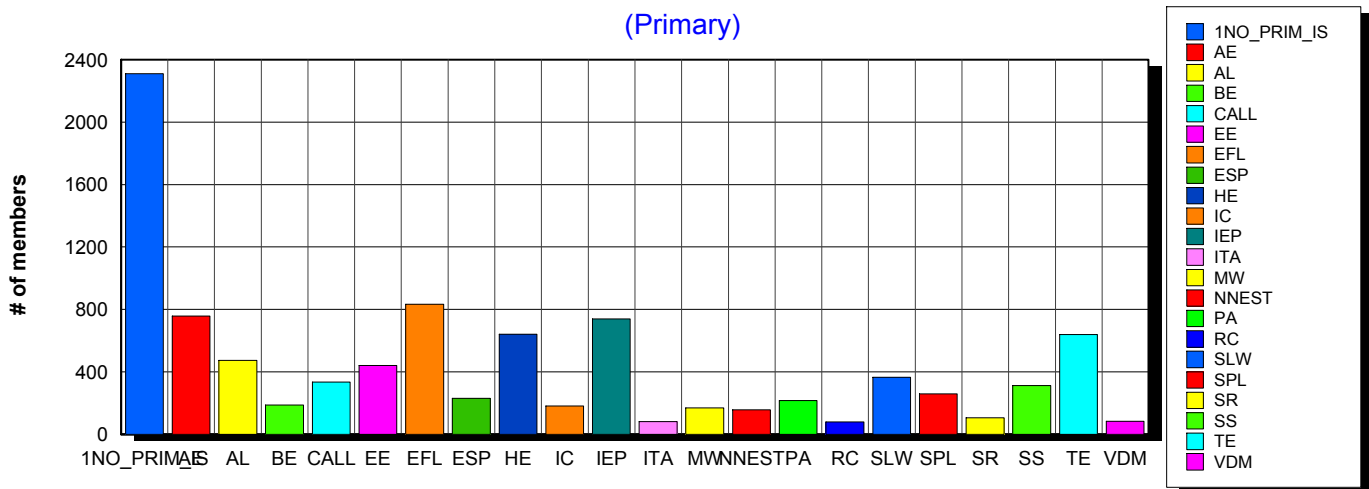
3/10/2016 **Basic statistics on Primary vs. other memberships in interest sections. For members paid through 2/29/2016 or later.**

			<i>Primary versus other</i>	
No Primary Interest Section	7.3%	2,324	2,311	13
Adult Education	6.2%	1,972	758	1,214
Applied Linguistics	5.8%	1,854	474	1,380
Bilingual Education	3.1%	985	187	798
Computer-Assisted Language Learning	5.1%	1,617	334	1,283
Elementary Education	3.2%	1,017	440	577
English as a Foreign Language	6.9%	2,195	832	1,363
English for Specific Purposes	4.4%	1,416	231	1,185
Higher Education	6.2%	1,989	640	1,349
Intercultural Communication	4.8%	1,529	181	1,348
Intensive English Programs	6.2%	1,981	738	1,243
International Teaching Assistants	1.9%	607	81	526
Materials Writers	3.4%	1,080	168	912
Nonnative English Speakers in TESOL	2.8%	897	157	740
Program Administration	3.5%	1,126	216	910
Refugee Concerns	2.2%	687	79	608
Second Language Writing	6.1%	1,947	364	1,583
Speech, Pronunciation, and Listening	5.3%	1,693	258	1,435
Social Responsibility	2.1%	680	106	574
Secondary Schools	2.8%	889	312	577
Teacher Education	7.2%	2,285	638	1,647
Video & Digital Media	3.5%	1,106	83	1,023
<i>9,610 distinct members</i>		Total # of IS memberships	31,876	9,588 22,288

The total count is the number of IS memberships total and may either be LESS or MORE than the actual number of individual members of TESOL. Due to open access to Interest Sections, these numbers may fluctuate considerably each month. For instance, one member may have selected four interest sections, while some members may belong to none.

Interest Sections

(Primary)

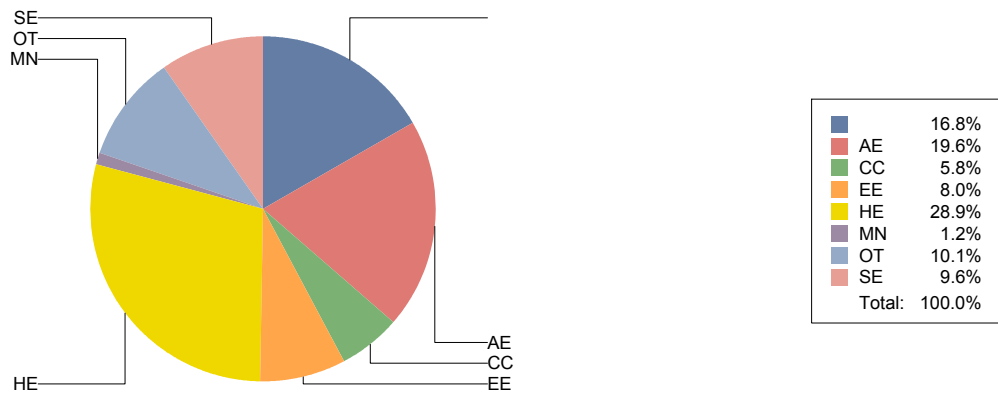


Basic Statistics on Area of Work (Members paid through >= 2/29/2016)

		1,888	16.8%
Adult Education	AE	2,206	19.6%
Community/2yr College	CC	650	5.8%
Elementary Education	EE	904	8.0%
Postsecondary Education	HE	3,245	28.9%
Mainstream	MN	135	1.2%
Other	OT	1,132	10.1%
Secondary Education	SE	1,078	9.6%
		11,238	

Only members who selected an area of work are included on this report. Other members may not have responded to this question and are excluded from the count.

Areas of Work



(Blanks indicate no response)

Statistics on Areas of Interest (Members paid through >= 2/29/2016)

<u>CODE</u>	<u>DESCRIPTION</u>	<u>TOTAL*</u>	<u>% of TOTAL*</u>
TE	Teacher education	1,609	5%
CURRICULUM	Materials development/Curriculum	1,558	4%
EFL	English as a foreign language	1,501	4%
SLA	Second language acquisition	1,471	4%
AL	Applied linguistics	1,404	4%
HE	Higher education	1,365	4%
IC	Multiculturalism/intercultural communications	1,335	4%
WRITING	Writing/composition	1,332	4%
CALL	Technology in education	1,312	4%
IEP	Intensive English programs	1,296	4%
AE	Adult education	1,254	4%
PROFDEV	Professional development	1,213	3%
CONTENT	Content-based instruction	1,184	3%
SP	Speaking/pronunciation	1,087	3%
READING	Reading/literacy	1,069	3%
GRAMMAR	Grammar	1,032	3%
ASSESS	Assessment/testing	995	3%
ESP	English for specific purposes	965	3%
RS	Research	913	3%
PA	Program administration	727	2%
DISTANCE	Distance learning/Online Education	726	2%
VOCAB	Vocabulary/Lexicon	706	2%
BE	Bilingual education	685	2%
SOCIAL	Social/global/political concerns	617	2%
ISKILL	Integrated Skills	591	2%
LISTEN	Listening	584	2%
WORKPLACE	Workplace English instruction/Business English	576	2%
VI	Video and digital media	563	2%
EE	Elementary/primary education	548	2%
SS	Secondary education	517	1%
COMMCOLL	Community college/technical ed	466	1%
RC	Refugee concerns	401	1%
LINGUISTICS	Theoretical Linguistics	399	1%
STANDARDS	Standards	385	1%
LIT	Literature	361	1%
ITA	International teaching assistants	353	1%
FAMILY	Community/family outreach	301	1%
NNES	NNES/NES issues	284	1%
EMPLOYMENT	Employment issues/Certification	279	1%
PUBLICPOLICY	Public policy	245	1%
ACCRED	Accreditation	241	1%
LDSN	Learning Disorders/Special Needs	240	1%
MAINSTREAMING	Mainstreaming	216	1%
ARTS	Arts/Media/Science/Math/Social Science	168	0%
STYLISTICS	Stylistics	66	0%

Sorted in order of prevalence.

** Note: Members are encouraged to choose multiple areas of interest and some members do not choose any areas of interest. The total number of distinct members (4,433) represented in this report is less than the total number of active members as indicated elsewhere in this report.*

Areas of interest are separate from official TESOL interest sections. Areas of interest represent distinct areas in which a member may be interested, rather than official entities in which a member is involved.

Areas of interest which have a very low count may be recent additions to the AOI list, or may reflect overall trends in membership.

Statistics on Areas of Expertise (Members paid through >= 2/29/2016)

<u>CODE</u>	<u>DESCRIPTION</u>	<u>TOTAL*</u>	<u>% of TOTAL*</u>
EFL	English as a foreign language	973	6%
CURRICULUM	Materials development/Curriculum	859	5%
AE	Adult education	824	5%
WRITING	Writing/composition	791	5%
IEP	Intensive English programs	772	5%
TE	Teacher education	752	5%
AL	Applied linguistics	745	5%
HE	Higher education	700	4%
SLA	Second language acquisition	636	4%
CONTENT	Content-based instruction	601	4%
GRAMMAR	Grammar	579	4%
IC	Multiculturalism/intercultural communications	508	3%
CALL	Technology in education	506	3%
ESP	English for specific purposes	476	3%
PROFDEV	Professional development	476	3%
SP	Speaking/pronunciation	444	3%
READING	Reading/literacy	436	3%
PA	Program administration	415	3%
ASSESS	Assessment/testing	405	2%
EE	Elementary/primary education	365	2%
ISKILL	Integrated Skills	336	2%
DISTANCE	Distance learning/Online Education	306	2%
COMMCOLL	Community college/technical ed	284	2%
SS	Secondary education	282	2%
RS	Research	273	2%
BE	Bilingual education	267	2%
WORKPLACE	Workplace English instruction/Business English	254	2%
LISTEN	Listening	242	1%
VOCAB	Vocabulary/Lexicon	208	1%
LIT	Literature	188	1%
SOCIAL	Social/global/political concerns	152	1%
VI	Video and digital media	145	1%
NNES	NNES/NES issues	126	1%
ACCRED	Accreditation	125	1%
ITA	International teaching assistants	123	1%
FAMILY	Community/family outreach	96	1%
LINGUISTICS	Theoretical Linguistics	96	1%
MAINSTREAMING	Mainstreaming	96	1%
STANDARDS	Standards	94	1%
RC	Refugee concerns	88	1%
ARTS	Arts/Media/Science/Math/Social Science	80	0%
LDSN	Learning Disorders/Special Needs	78	0%
EMPLOYMENT	Employment issues/Certification	76	0%
PUBLICPOLICY	Public policy	53	0%
STYLISTICS	Stylistics	18	0%

Sorted in order of prevalence.

** Note: Members are encouraged to choose multiple areas of expertise and some members do not choose any areas of expertise. The total number of distinct members (3,559) represented in this report is less than the total number of active members as indicated elsewhere in this report.*

Areas of Expertise are separate from official TESOL interest sections or Areas of Interest. Areas of expertise represent distinct areas in which a member may be experienced in, rather than official entities in which a member is involved.

Areas of interest which have a very low count may be recent additions to the AOI list, or may reflect overall trends in membership.