

2/17/2016

Membership Statistics: Grand totals for basic membership, by member type and country

		<u># Memberships</u>	<u># Members</u>
IND	BASIC		
	Existing Member(s)	4,365	4,365
	New as of 1/1/2016 or later	472	472
IND	BASIC	4,837	4,837

IND2	BASIC		
	Existing Member(s)	2,119	2,119
	New as of 1/1/2016 or later	29	29
IND2	BASIC	2,148	2,148

STU	BASIC		
	Existing Member(s)	812	812
	New as of 1/1/2016 or later	105	105
STU	BASIC	917	917

STU2	BASIC		
	Existing Member(s)	427	427
	New as of 1/1/2016 or later	24	24
STU2	BASIC	451	451

LIF	BASIC		
	Existing Member(s)	51	51
LIF	BASIC	51	51

RET	BASIC		
	Existing Member(s)	147	147
	New as of 1/1/2016 or later	1	1
RET	BASIC	148	148

RET2	BASIC		
	Existing Member(s)	102	102
RET2	BASIC	102	102

PTR	BASIC		
	Existing Member(s)	446	446
	New as of 1/1/2016 or later	36	36
PTR	BASIC	482	482

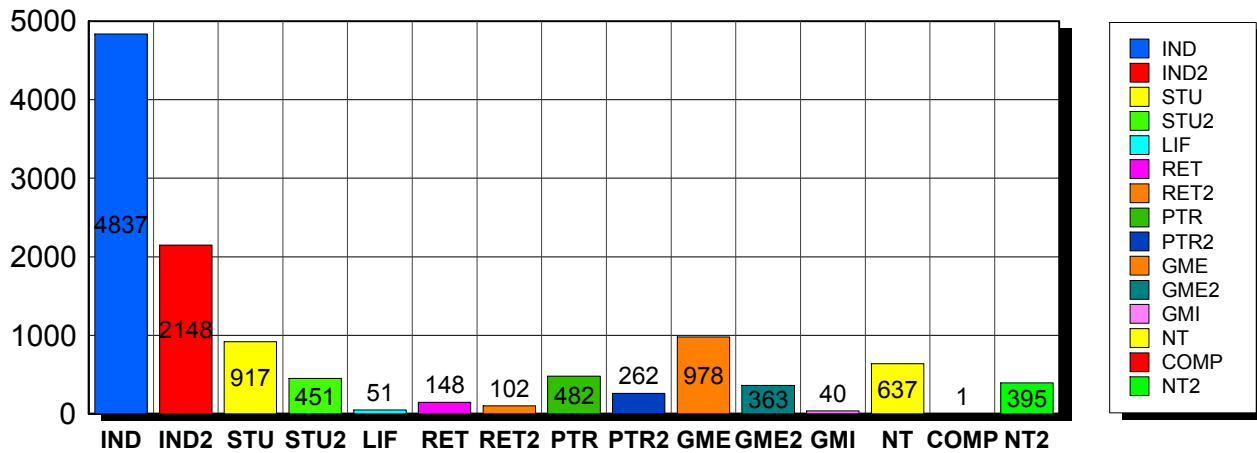
PTR2	BASIC		
	Existing Member(s)	259	259
	New as of 1/1/2016 or later	3	3
PTR2	BASIC	262	262

GME	BASIC		
	Existing Member(s)	842	842
	New as of 1/1/2016 or later	136	136
GME	BASIC	978	978

GME2	BASIC		
	Existing Member(s)	355	355
	New as of 1/1/2016 or later	8	8
GME2	BASIC	363	363

GMI	BASIC		
	Existing Member(s)	17	17
	New as of 1/1/2016 or later	23	23
GMI	BASIC	40	40
<hr/>			
NT	BASIC		
	Existing Member(s)	548	548
	New as of 1/1/2016 or later	89	89
NT	BASIC	637	637
<hr/>			
COMP	BASIC		
	Existing Member(s)	1	1
COMP	BASIC	1	1
<hr/>			
NT2	BASIC		
	Existing Member(s)	383	383
	New as of 1/1/2016 or later	12	12
NT2	BASIC	395	395
<hr/>			
Grand Total:		11,812	11,812

Member Types



Note: in all general statistic reports, joint household memberships are treated as "one" member EXCEPT in the second column of this report, where joints are counted as two people, providing the most accurate count of the number of TESOL members.

		Existing Member(s)	New as of 1/1/2016 or later	Total
COMP	United States	1	0	1
	Total	1	0	1
GME	United States	30	1	31
	AFGHANISTAN	1	0	1
	ALBANIA	3	0	3
	ALGERIA	4	0	4

		Existing Member(s)	New as of 1/1/2016 or later	Total
GME	ARGENTINA	18	4	22
	ARMENIA	1	0	1
	AZERBAIJAN	5	2	7
	BAHRAIN	0	1	1
	BANGLADESH	32	0	32
	BELIZE	2	0	2
	BOLIVIA	8	10	18
	BRAZIL	58	4	62
	BULGARIA	3	0	3
	BURKINA FASO	1	0	1
	CAMBODIA	3	0	3
	CAMEROON	2	0	2
	CHILE	9	0	9
	CHINA	83	3	86
	COLOMBIA	11	0	11
	COSTA RICA	12	2	14
	CROATIA	5	0	5
	DOMINICAN	6	1	7
	ECUADOR	69	29	98
	EGYPT	20	2	22
	GEORGIA	3	0	3
	GHANA	1	0	1
	GUATEMALA	9	2	11
	HAITI	15	2	17
	HONDURAS	2	1	3
	HONG KONG	1	0	1
	HONG KONG	1	0	1
	HUNGARY	2	1	3
	INDIA	55	0	55
	INDONESIA	3	0	3
IRAN	3	0	3	

		Existing Member(s)	New as of 1/1/2016 or later	Total
GME	IRAQ	1	1	2
	JAMAICA	2	0	2
	JORDAN	1	1	2
	KAZAKHSTAN	0	1	1
	KUWAIT	1	0	1
	LEBANON	5	0	5
	MACAO	1	0	1
	MADAGASCAR	3	1	4
	MALAYSIA	17	0	17
	MALI	1	0	1
	MAURITANIA	4	0	4
	MEXICO	63	3	66
	MOLDOVA,	3	0	3
	MONGOLIA	3	0	3
	MOROCCO	23	13	36
	MOZAMBIQUE	1	0	1
	MYANMAR	1	0	1
	NEPAL	6	7	13
	NEW ZEALAND	1	0	1
	NICARAGUA	2	0	2
	NIGERIA	7	0	7
	NORWAY	1	0	1
	PAKISTAN	19	0	19
	PALESTINIAN	2	0	2
	PANAMA	16	2	18
	PARAGUAY	1	2	3
	PEOPLES REP	2	23	25
PERU	47	9	56	
PHILIPPINES	12	0	12	
POLAND	4	0	4	
RUSSIA	6	0	6	

		Existing Member(s)	New as of 1/1/2016 or later	Total
GME	RUSSIAN	6	0	6
	RWANDA	1	0	1
	SAUDI ARABIA	1	0	1
	SERBIA	5	0	5
	SLOVAKIA	1	0	1
	SOUTH AFRICA	4	0	4
	SRI LANKA	0	1	1
	SUDAN	3	0	3
	SWAZILAND	1	0	1
	SYRIAN ARAB	1	0	1
	TAIWAN ROC	5	0	5
	TANZANIA,	1	0	1
	THAILAND	10	1	11
	TUNISIA	2	0	2
	TURKEY	19	1	20
	UGANDA	1	0	1
	UKRAINE	7	2	9
	United States	3	0	3
	UNITED	6	1	7
	URUGUAY	6	0	6
	UZBEKISTAN	1	0	1
	VENEZUELA	14	1	15
	VIET NAM	1	0	1
VIETNAM	4	1	5	
YEMEN	2	0	2	
Total	842	136	978	
GME2	United States	4	1	5
	AFGHANISTAN	1	0	1
	ALBANIA	2	0	2
	ANGOLA	1	0	1
	ARGENTINA	3	0	3

		Existing Member(s)	New as of 1/1/2016 or later	Total
GME2	ARMENIA	1	0	1
	BANGLADESH	2	0	2
	BELARUS	1	0	1
	BOLIVIA	4	0	4
	BRAZIL	22	0	22
	BULGARIA	4	0	4
	BURKINA FASO	1	0	1
	CAMEROON	1	0	1
	CHILE	5	2	7
	CHINA	50	1	51
	COLOMBIA	8	1	9
	COSTA RICA	8	0	8
	CUBA	1	0	1
	DOMINICAN	8	0	8
	ECUADOR	17	0	17
	EGYPT	3	0	3
	GABON	2	0	2
	GEORGIA	1	0	1
	GRENADA	2	0	2
	GUATEMALA	1	0	1
	HONDURAS	1	0	1
	INDIA	23	0	23
	INDONESIA	5	0	5
	IRAQ	1	0	1
	JORDAN	3	0	3
	KAZAKHSTAN	4	1	5
	KOSOVO	1	0	1
	LATVIA	1	0	1
	LEBANON	2	0	2
	LITHUANIA	1	0	1
MADAGASCAR	1	0	1	

		Existing Member(s)	New as of 1/1/2016 or later	Total
GME2	MALAYSIA	5	0	5
	MARSHALL	1	0	1
	MAURITIUS	1	0	1
	MEXICO	24	0	24
	MONGOLIA	6	0	6
	MOROCCO	3	0	3
	NAMIBIA	1	0	1
	NEPAL	3	0	3
	NIGER	1	0	1
	NIGERIA	5	0	5
	PAKISTAN	4	0	4
	PANAMA	2	0	2
	PARAGUAY	1	0	1
	PEOPLES REP	1	0	1
	PERU	7	1	8
	PHILIPPINES	8	0	8
	POLAND	5	0	5
	RUSSIA	1	0	1
	RUSSIAN	5	0	5
	SENEGAL	1	0	1
	SIERRA LEONE	1	0	1
	SRI LANKA	2	0	2
	SURINAME	1	0	1
	TAIWAN ROC	2	0	2
	TAJKISTAN	2	0	2
	THAILAND	13	0	13
	TUNISIA	3	0	3
TURKEY	19	0	19	
United States	1	0	1	
UNITED	2	0	2	
URUGUAY	2	0	2	

		Existing Member(s)	New as of 1/1/2016 or later	Total
GME2	UZBEKISTAN	19	0	19
	VENEZUELA	2	0	2
	VIET NAM	1	0	1
	VIETNAM	3	1	4
	YEMEN	1	0	1
	Total	355	8	363
GMI	United States	1	0	1
	BELARUS	0	1	1
	BOSNIA AND	0	1	1
	BRAZIL	0	6	6
	CHINA	1	2	3
	HUNGARY	0	1	1
	IRAQ	0	1	1
	KOSOVO	0	1	1
	LATVIA	0	1	1
	MACEDONIA	0	1	1
	MEXICO	1	0	1
	PERU	13	5	18
	ROMANIA	0	1	1
	SERBIA	0	1	1
	UKRAINE	0	1	1
	VENEZUELA	1	0	1
Total	17	23	40	
IND	United States	3,295	352	3,647
	02453-2728	1	0	1
	AUSTRALIA	18	2	20
	BAHRAIN	1	0	1
	BERMUDA	1	0	1
	BRAZIL	2	1	3
	CANADA	236	8	244
	CHILE	1	0	1

		Existing Member(s)	New as of 1/1/2016 or later	Total
IND	CHINA	6	1	7
	COLOMBIA	3	0	3
	COSTA RICA	1	0	1
	CYPRUS	1	0	1
	CZECH	5	0	5
	DENMARK	3	0	3
	ECUADOR	1	0	1
	EGYPT	3	0	3
	FRANCE	4	0	4
	GERMANY	7	0	7
	GREECE	1	0	1
	HONG KONG	7	0	7
	HONG KONG	3	0	3
	HUNGARY	1	1	2
	INDIA	2	0	2
	IRELAND	2	0	2
	ISRAEL	7	0	7
	ITALY	8	0	8
	JAPAN	186	5	191
	JORDAN	3	0	3
	Korea, Republic	5	1	6
	KOREA,	1	0	1
	KOREA,	2	3	5
	KOSOVO	1	0	1
	KUWAIT	6	0	6
	LEBANON	1	0	1
	LIBYA	0	1	1
	MACAO	1	0	1
	MALAYSIA	2	0	2
	MEXICO	2	1	3
MOROCCO	1	0	1	

		Existing Member(s)	New as of 1/1/2016 or later	Total
IND	NETHERLAND	3	0	3
	NEW ZEALAND	7	0	7
	NIGERIA	4	0	4
	NORWAY	6	0	6
	OMAN	3	0	3
	PAKISTAN	1	1	2
	PALESTINIAN	1	0	1
	PANAMA	1	0	1
	PARAGUAY	1	0	1
	PEOPLES REP	2	0	2
	PERU	1	2	3
	PHILIPPINES	1	0	1
	PORTUGAL	1	0	1
	Puerto Rico	10	0	10
	QATAR	16	0	16
	RUSSIAN	1	0	1
	SAUDI ARABIA	13	1	14
	SINGAPORE	4	0	4
	SLOVAKIA	0	1	1
	SOUTH AFRICA	2	0	2
	SOUTH KOREA	7	2	9
	SPAIN	5	1	6
	SWEDEN	6	1	7
	SWITZERLAND	1	1	2
	TAIWAN	6	0	6
	TAIWAN ROC	2	1	3
	TRINIDAD AND	1	0	1
	UNITED ARAB	26	4	30
	UNITED	11	0	11
	United States	15	0	15
UNITED	372	81	453	

		Existing Member(s)	New as of 1/1/2016 or later	Total
IND	URUGUAY	1	0	1
	VIET NAM	2	0	2
	VIETNAM	1	0	1
	Total	4,365	472	4,837
IND2	United States	1,612	20	1,632
	AUSTRALIA	18	0	18
	AUSTRIA	2	0	2
	BAHRAIN	2	0	2
	BENIN	1	0	1
	BRAZIL	3	0	3
	CANADA	104	0	104
	CAYMAN	1	0	1
	CHILE	1	0	1
	CHINA	7	0	7
	COLOMBIA	2	0	2
	COSTA RICA	1	0	1
	CYPRUS	1	0	1
	FINLAND	1	0	1
	FRANCE	1	0	1
	GERMANY	7	1	8
	GREECE	1	0	1
	HONG KONG	4	0	4
	HONG KONG	7	0	7
	INDIA	3	0	3
	IRAQ	1	0	1
	ITALY	4	0	4
	JAPAN	97	1	98
	Korea, Republic	2	0	2
	KOREA,	3	0	3
	KUWAIT	5	0	5
	Lao People's	1	0	1

		Existing Member(s)	New as of 1/1/2016 or later	Total
IND2	LUXEMBOURG	1	0	1
	MACAO	4	0	4
	MALAYSIA	3	0	3
	MARTINIQUE	1	0	1
	NETHERLAND	1	0	1
	NEW	1	0	1
	NEW ZEALAND	3	0	3
	NIGERIA	1	0	1
	NORWAY	1	0	1
	OMAN	1	0	1
	QATAR	15	0	15
	ROMANIA	1	0	1
	RUSSIAN	1	0	1
	SAUDI ARABIA	12	0	12
	SINGAPORE	3	0	3
	SLOVAKIA	2	0	2
	SOUTH KOREA	6	0	6
	SPAIN	2	0	2
	SWITZERLAND	2	0	2
	TAIWAN	6	0	6
	TAIWAN ROC	2	0	2
	THAILAND	2	0	2
	TRINIDAD AND	1	0	1
	TURKEY	2	0	2
	UKRAINE	1	0	1
	UNITED ARAB	11	0	11
	UNITED	6	0	6
UNITED	132	7	139	
URUGUAY	2	0	2	
VENEZUELA	1	0	1	
Total	2,119	29	2,148	

		Existing Member(s)	New as of 1/1/2016 or later	Total
LIF	United States	41	0	41
	AUSTRALIA	1	0	1
	CANADA	2	0	2
	EGYPT	1	0	1
	ISRAEL	1	0	1
	JAPAN	1	0	1
	UNITED ARAB	1	0	1
	UNITED	2	0	2
	UNITED	1	0	1
	Total	51	0	51
NT	United States	370	56	426
	AUSTRALIA	3	0	3
	AUSTRIA	1	0	1
	CANADA	23	0	23
	CHINA	4	0	4
	COLOMBIA	1	0	1
	ECUADOR	2	0	2
	GERMANY	1	0	1
	GREECE	1	0	1
	HONG KONG	1	0	1
	IRAQ	1	0	1
	ITALY	1	1	2
	JAPAN	16	2	18
	KUWAIT	1	0	1
	MARTINIQUE	1	0	1
	MATARA	1	0	1
	NEW ZEALAND	1	0	1
	PERU	2	0	2
	QATAR	2	0	2
	RUSSIA	1	0	1
SAUDI ARABIA	3	0	3	

		Existing Member(s)	New as of 1/1/2016 or later	Total
NT	SINGAPORE	0	1	1
	SOUTH KOREA	2	0	2
	SPAIN	1	0	1
	THAILAND	1	1	2
	TURKEY	0	1	1
	UNITED	2	0	2
	UNITED	105	27	132
	Total	548	89	637
NT2	United States	317	8	325
	AUSTRALIA	4	0	4
	CANADA	6	0	6
	HONG KONG	2	0	2
	HONG KONG	1	0	1
	HUNGARY	1	0	1
	ITALY	1	0	1
	JAPAN	4	0	4
	KOREA,	1	0	1
	KUWAIT	1	0	1
	MACAO	1	0	1
	SAUDI ARABIA	1	0	1
	SINGAPORE	1	1	2
	SOUTH KOREA	1	0	1
	SWITZERLAND	1	0	1
	TAIWAN	2	0	2
	UNITED ARAB	1	0	1
	UNITED	1	0	1
	UNITED	36	3	39
	Total	383	12	395
PTR	United States	318	18	336
	AUSTRALIA	1	0	1
	BRAZIL	4	0	4

		Existing Member(s)	New as of 1/1/2016 or later	Total
PTR	CANADA	17	1	18
	CHILE	1	0	1
	CHINA	4	3	7
	COLOMBIA	1	0	1
	COSTA RICA	1	0	1
	CZECH	1	0	1
	DOMINICAN	1	0	1
	ECUADOR	9	1	10
	EGYPT	1	0	1
	FRANCE	1	0	1
	GERMANY	1	0	1
	GREECE	1	0	1
	HAITI	1	0	1
	ICELAND	0	1	1
	INDONESIA	0	1	1
	IRAQ	1	0	1
	JAPAN	9	0	9
	KUWAIT	1	0	1
	LITHUANIA	1	0	1
	MACAO	1	0	1
	MOROCCO	1	0	1
	NEW ZEALAND	1	0	1
	NICARAGUA	0	1	1
	NORTHERN	1	0	1
	PAKISTAN	1	0	1
	PANAMA	1	0	1
	PERU	1	0	1
	PHILIPPINES	1	0	1
POLAND	1	0	1	
Puerto Rico	5	0	5	
SAUDI ARABIA	1	0	1	

		Existing Member(s)	New as of 1/1/2016 or later	Total
PTR	SINGAPORE	1	0	1
	SLOVENIA	1	0	1
	SOUTH AFRICA	1	0	1
	SOUTH KOREA	1	0	1
	SPAIN	1	1	2
	TAIWAN	1	0	1
	TANZANIA,	4	0	4
	THAILAND	1	0	1
	TURKEY	5	0	5
	UNITED ARAB	2	0	2
	UNITED	4	0	4
	UNITED	33	9	42
	VENEZUELA	1	0	1
	Total	446	36	482
PTR2	United States	192	2	194
	BRAZIL	2	0	2
	CANADA	10	0	10
	CHILE	1	0	1
	CHINA	3	0	3
	COLOMBIA	1	0	1
	CZECH	1	0	1
	GERMANY	1	0	1
	HONG KONG	1	0	1
	INDONESIA	2	0	2
	ISRAEL	1	0	1
	ITALY	1	0	1
	JAPAN	3	0	3
	MACAO	1	0	1
	MEXICO	1	0	1
	PHILIPPINES	1	0	1
	POLAND	1	0	1

		Existing Member(s)	New as of 1/1/2016 or later	Total
PTR2	SAUDI ARABIA	8	0	8
	TAIWAN	5	0	5
	THAILAND	1	0	1
	TURKEY	5	0	5
	UNITED ARAB	1	0	1
	UNITED	16	1	17
	Total	259	3	262
RET	United States	127	1	128
	BRAZIL	1	0	1
	CANADA	4	0	4
	COLOMBIA	1	0	1
	GERMANY	1	0	1
	JAPAN	3	0	3
	MEXICO	1	0	1
	PORTUGAL	1	0	1
	SRI LANKA	1	0	1
	UNITED	7	0	7
	Total	147	1	148
RET2	United States	84	0	84
	AUSTRALIA	1	0	1
	CANADA	1	0	1
	GERMANY	1	0	1
	ISRAEL	4	0	4
	ITALY	1	0	1
	JAPAN	4	0	4
	SPAIN	1	0	1
	UNITED	2	0	2
	UNITED	3	0	3
	Total	102	0	102
STU	United States	590	79	669
	AUSTRALIA	9	1	10

		Existing Member(s)	New as of 1/1/2016 or later	Total
STU	BELGIUM	1	0	1
	BRAZIL	1	0	1
	CANADA	49	1	50
	CHINA	6	0	6
	GERMANY	3	0	3
	GHANA	0	1	1
	HAITI	1	0	1
	HONG KONG	1	1	2
	HONG KONG	2	1	3
	INDONESIA	0	1	1
	JAPAN	9	1	10
	Korea, Republic	1	0	1
	MALAYSIA	1	0	1
	MEXICO	1	1	2
	NEW ZEALAND	2	0	2
	PHILIPPINES	2	0	2
	POLAND	1	0	1
	RUSSIAN	1	1	2
	SAUDI ARABIA	2	0	2
	SLOVENIA	1	0	1
	SOUTH KOREA	3	1	4
	THAILAND	2	0	2
	TURKEY	4	1	5
	UNITED	8	1	9
United States	1	0	1	
UNITED	110	14	124	
Total	812	105	917	
STU2	United States	337	19	356
	ALBANIA	2	0	2
	AUSTRALIA	4	0	4
	BRAZIL	2	0	2

		Existing Member(s)	New as of 1/1/2016 or later	Total
STU2	CAMEROON	2	0	2
	CANADA	22	0	22
	CHINA	2	0	2
	FRANCE	1	0	1
	GERMANY	1	0	1
	HONG KONG	2	0	2
	HONG KONG	1	0	1
	INDONESIA	1	0	1
	ISRAEL	1	0	1
	JAPAN	4	0	4
	Korea, Republic	1	0	1
	KOREA,	1	0	1
	LEBANON	1	0	1
	MEXICO	2	0	2
	NEPAL	1	0	1
	OMAN	1	0	1
	Puerto Rico	1	0	1
	SINGAPORE	1	0	1
	TAIWAN ROC	1	0	1
	UNITED	5	0	5
UNITED	30	5	35	
Total		427	24	451
Total		10,874	938	11,812

This report is based on members paid through 1/31/2016 or later.

Country/State/Province	Total	
02453-2728	1	0.0%
AFGHANISTAN	2	0.0%
ALBANIA	7	0.1%
ALGERIA	4	0.0%
ANGOLA	1	0.0%
ARGENTINA	25	0.2%
ARMENIA	2	0.0%
AUSTRALIA	62	0.5%
AUSTRIA	3	0.0%
AZERBAIJAN	7	0.1%
BAHRAIN	4	0.0%
BANGLADESH	34	0.3%
BELARUS	2	0.0%
BELGIUM	1	0.0%
BELIZE	2	0.0%
BENIN	1	0.0%
BERMUDA	1	0.0%
BOLIVIA	22	0.2%
BOSNIA AND HERZEGOVINA	1	0.0%
BRAZIL	106	0.9%
BULGARIA	7	0.1%
BURKINA FASO	2	0.0%
CAMBODIA	3	0.0%
CAMEROON	5	0.0%
CANADA		
<i>CANADA</i>	<i>4</i>	
<i>CANADA Alberta</i>	<i>29</i>	
<i>CANADA British Columbia</i>	<i>99</i>	
<i>CANADA Manitoba</i>	<i>17</i>	
<i>CANADA Montana</i>	<i>1</i>	
<i>CANADA New Brunswick</i>	<i>13</i>	
<i>CANADA Newfoundland and Labrador</i>	<i>1</i>	
<i>CANADA Northwest Territories</i>	<i>1</i>	
<i>CANADA Nova Scotia</i>	<i>14</i>	
<i>CANADA Ontario</i>	<i>243</i>	
<i>CANADA Quebec</i>	<i>35</i>	
<i>CANADA Saskatchewan</i>	<i>26</i>	
<i>CANADA Yukon Territory</i>	<i>1</i>	
CANADA	484	4.1%
CAYMAN ISLANDS	1	0.0%
CHILE	20	0.2%
CHINA	176	1.5%
COLOMBIA	29	0.2%
COSTA RICA	25	0.2%
CROATIA	5	0.0%
CUBA	1	0.0%
CYPRUS	2	0.0%
CZECH REPUBLIC	7	0.1%
DENMARK	3	0.0%
DOMINICAN REPUBLIC	16	0.1%
ECUADOR	128	1.1%
EGYPT	30	0.3%
FINLAND	1	0.0%
FRANCE	7	0.1%
GABON	2	0.0%
GEORGIA	4	0.0%
GERMANY	24	0.2%

GHANA	2	0.0%
GREECE	4	0.0%
GRENADA	2	0.0%
GUATEMALA	12	0.1%
HAITI	19	0.2%
HONDURAS	4	0.0%
HONG KONG	19	0.2%
HONG KONG SAR CHINA	17	0.1%
HUNGARY	7	0.1%
ICELAND	1	0.0%
INDIA	83	0.7%
INDONESIA	13	0.1%
IRAN	3	0.0%
IRAQ	7	0.1%
IRELAND	2	0.0%
ISRAEL	14	0.1%
ITALY	17	0.1%
JAMAICA	2	0.0%
JAPAN	345	2.9%
JORDAN	8	0.1%
KAZAKHSTAN	6	0.1%
Korea, Republic Of	10	0.1%
KOREA, REPUBLIC OF	1	0.0%
KOREA, REPUBLIC OF	10	0.1%
KOSOVO (UNMIK)	3	0.0%
KUWAIT	15	0.1%
Lao People's Dem Republic	1	0.0%
LATVIA	2	0.0%
LEBANON	9	0.1%
LIBYA	1	0.0%
LITHUANIA	2	0.0%
LUXEMBOURG	1	0.0%
MACAO	9	0.1%
MACEDONIA	1	0.0%
MADAGASCAR	5	0.0%
MALAYSIA	28	0.2%
MALI	1	0.0%
MARSHALL ISLANDS	1	0.0%
MARTINIQUE	2	0.0%
MATARA	1	0.0%
MAURITANIA	4	0.0%
MAURITIUS	1	0.0%
MEXICO	100	0.8%
MOLDOVA, REPUBLIC OF	3	0.0%
MONGOLIA	9	0.1%
MOROCCO	41	0.3%
MOZAMBIQUE	1	0.0%
MYANMAR	1	0.0%
NAMIBIA	1	0.0%
NEPAL	17	0.1%
NETHERLANDS	4	0.0%
NEW CALEDONIA	1	0.0%
NEW ZEALAND	15	0.1%
NICARAGUA	3	0.0%
NIGER	1	0.0%
NIGERIA	17	0.1%
NORTHERN MARIANA ISLANDS	1	0.0%
NORWAY	8	0.1%
OMAN	5	0.0%
PAKISTAN	26	0.2%
PALESTINIAN TERRITORY	3	0.0%

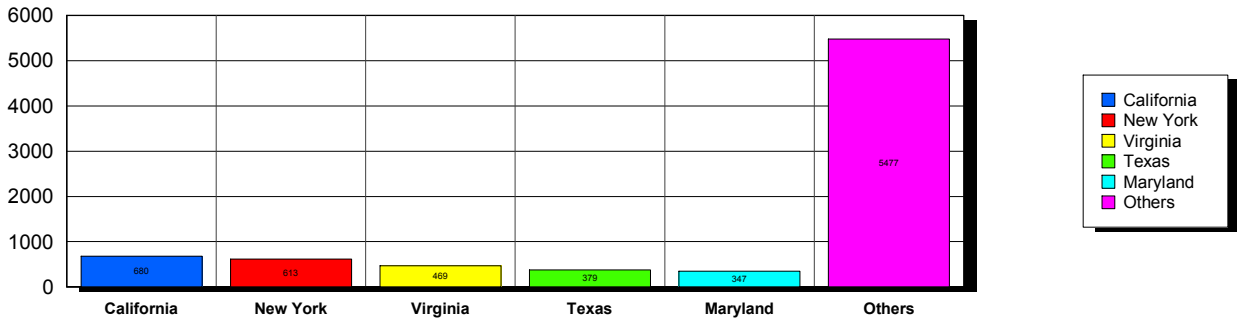
PANAMA		22	0.2%
PARAGUAY		5	0.0%
PEOPLES REP OF CHINA		28	0.2%
PERU		89	0.8%
PHILIPPINES		25	0.2%
POLAND		12	0.1%
PORTUGAL		2	0.0%
Puerto Rico		16	0.1%
QATAR		33	0.3%
ROMANIA		2	0.0%
RUSSIA		8	0.1%
RUSSIAN FEDERATION		15	0.1%
RWANDA		1	0.0%
SAUDI ARABIA		42	0.4%
SENEGAL		1	0.0%
SERBIA		6	0.1%
SIERRA LEONE		1	0.0%
SINGAPORE		12	0.1%
SLOVAKIA		4	0.0%
SLOVENIA		2	0.0%
SOUTH AFRICA		7	0.1%
SOUTH KOREA		23	0.2%
SPAIN		12	0.1%
SRI LANKA		4	0.0%
SUDAN		3	0.0%
SURINAME		1	0.0%
SWAZILAND		1	0.0%
SWEDEN		7	0.1%
SWITZERLAND		5	0.0%
SYRIAN ARAB REPUBLIC		1	0.0%
TAIWAN		20	0.2%
TAIWAN ROC		13	0.1%
TAJKISTAN		2	0.0%
TANZANIA, UNITED REPUBLIC		5	0.0%
THAILAND		32	0.3%
TRINIDAD AND TOBAGO		2	0.0%
TUNISIA		5	0.0%
TURKEY		57	0.5%
UGANDA		1	0.0%
UKRAINE		11	0.1%
UNITED ARAB EMIRATES		46	0.4%
UNITED KINGDOM		42	0.4%
United States		20	0.2%
UNITED STATES OF AMERICA		1,001	8.5%
URUGUAY		11	0.1%
USA			
USA		46	
USA	Alabama	73	
USA	Alaska	12	
USA	American Embassy	8	
USA	Arizona	141	
USA	Arkansas	73	
USA	Armed Forces	5	
USA	Armed Frces Americas	1	
USA	British Columbia	2	
USA	California	674	
USA	Colorado	136	
USA	Connecticut	130	
USA	Delaware	62	
USA	District of Columbia	162	
USA	Florida	293	

USA	Georgia	149	
USA	Guam	2	
USA	Hawaii	60	
USA	Idaho	47	
USA	Illinois	297	
USA	Indiana	156	
USA	Iowa	89	
USA	Kansas	134	
USA	Kentucky	66	
USA	Louisiana	36	
USA	Maine	35	
USA	Maryland	345	
USA	Massachusetts	324	
USA	Michigan	242	
USA	Minnesota	123	
USA	Mississippi	57	
USA	Missouri	178	
USA	Montana	12	
USA	Nebraska	48	
USA	Nevada	34	
USA	New Hampshire	60	
USA	New Jersey	234	
USA	New Mexico	46	
USA	New York	606	
USA	North Carolina	142	
USA	North Dakota	18	
USA	Ohio	265	
USA	Oklahoma	53	
USA	Ontario	2	
USA	Oregon	223	
USA	Pennsylvania	343	
USA	Puerto Rico	18	
USA	Quebec	1	
USA	Rhode Island	47	
USA	South Carolina	36	
USA	South Dakota	8	
USA	Tennessee	85	
USA	Texas	375	
USA	Utah	86	
USA	Vermont	61	
USA	Virginia	465	
USA	Washington	287	
USA	West Virginia	36	
USA	Wisconsin	122	
USA	Wyoming	9	
USA		7,880	66.7%
UZBEKISTAN		20	0.2%
VENEZUELA		20	0.2%
VIET NAM		4	0.0%
VIETNAM		10	0.1%
YEMEN		3	0.0%
Grand Total:		11,817	

155 distinct countries represented.

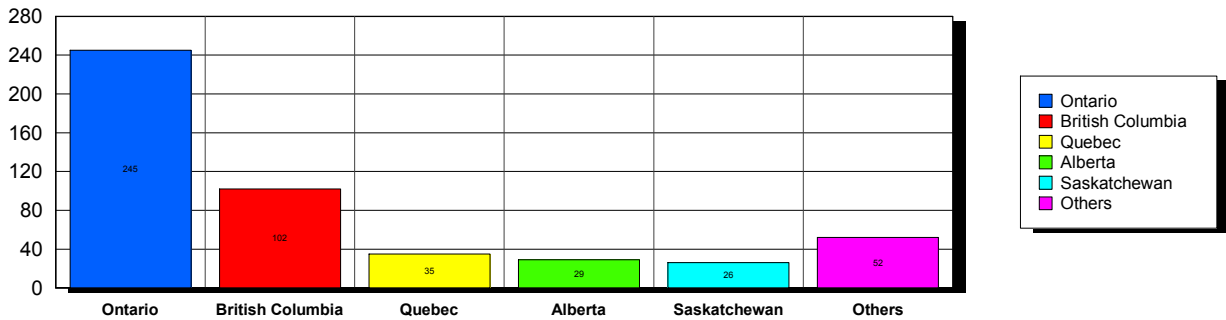
USA

Top 5 States per Country

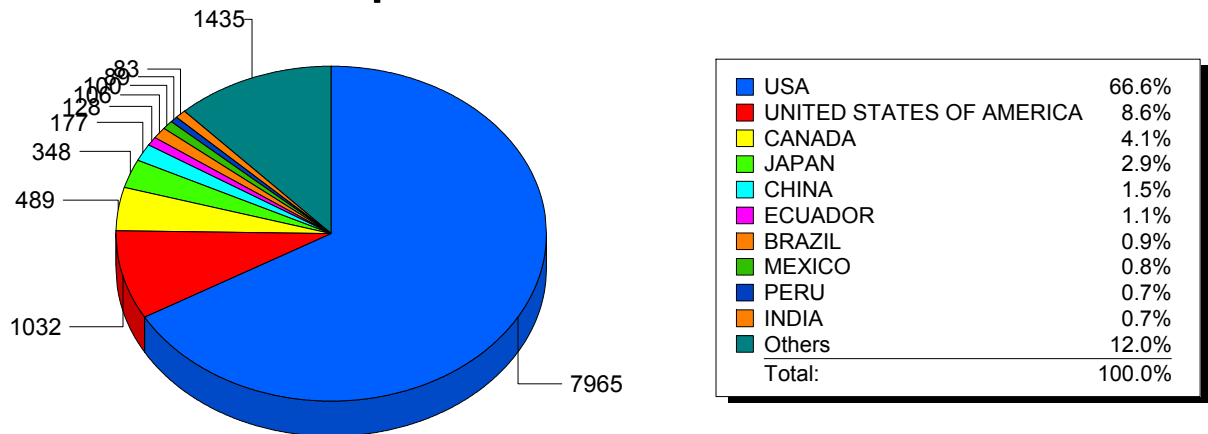


CANADA

Top 5 States per Country



Top 10 Countries



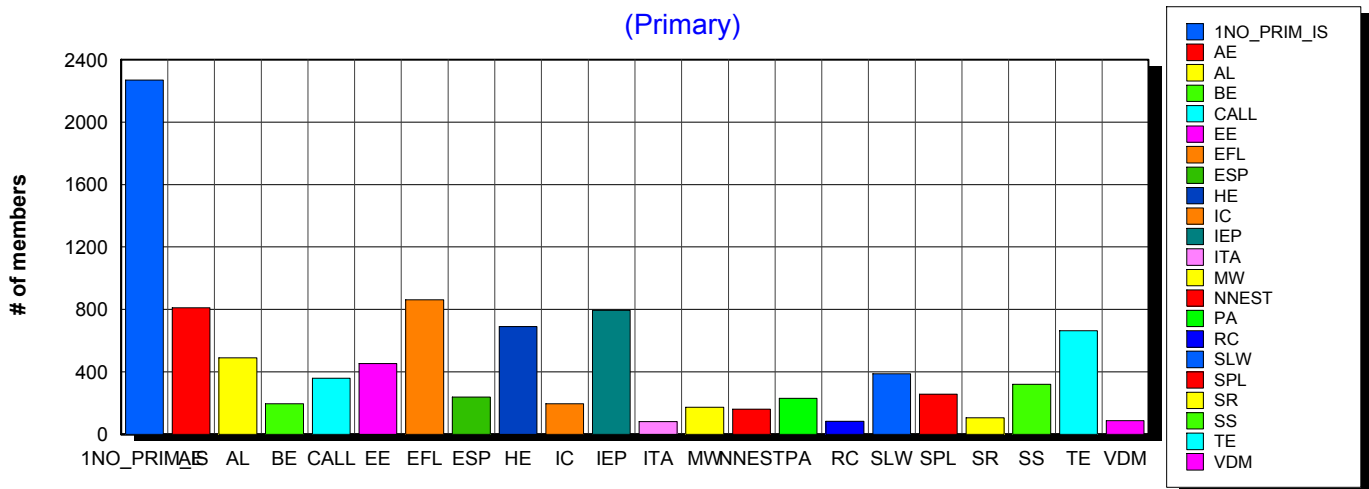
2/17/2016 **Basic statistics on Primary vs. other memberships in interest sections. For members paid through 1/31/2016 or later.**

		<i>Primary versus other</i>		
No Primary Interest Section	6.9%	2,283	2,269	14
Adult Education	6.2%	2,069	810	1,259
Applied Linguistics	5.8%	1,947	490	1,457
Bilingual Education	3.1%	1,034	195	839
Computer-Assisted Language Learning	5.1%	1,705	359	1,346
Elementary Education	3.2%	1,060	453	607
English as a Foreign Language	6.9%	2,313	861	1,452
English for Specific Purposes	4.4%	1,470	239	1,231
Higher Education	6.3%	2,096	689	1,407
Intercultural Communication	4.8%	1,604	195	1,409
Intensive English Programs	6.3%	2,107	794	1,313
International Teaching Assistants	1.9%	634	80	554
Materials Writers	3.4%	1,130	172	958
Nonnative English Speakers in TESOL	2.8%	937	161	776
Program Administration	3.5%	1,170	230	940
Refugee Concerns	2.1%	715	82	633
Second Language Writing	6.2%	2,050	388	1,662
Speech, Pronunciation, and Listening	5.3%	1,763	257	1,506
Social Responsibility	2.1%	708	106	602
Secondary Schools	2.8%	920	320	600
Teacher Education	7.2%	2,395	664	1,731
Video & Digital Media	3.5%	1,173	87	1,086
<i>9,919 distinct members</i>		Total # of IS memberships	33,283	9,901 23,382

The total count is the number of IS memberships total and may either be LESS or MORE than the actual number of individual members of TESOL. Due to open access to Interest Sections, these numbers may fluctuate considerably each month. For instance, one member may have selected four interest sections, while some members may belong to none.

Interest Sections

(Primary)

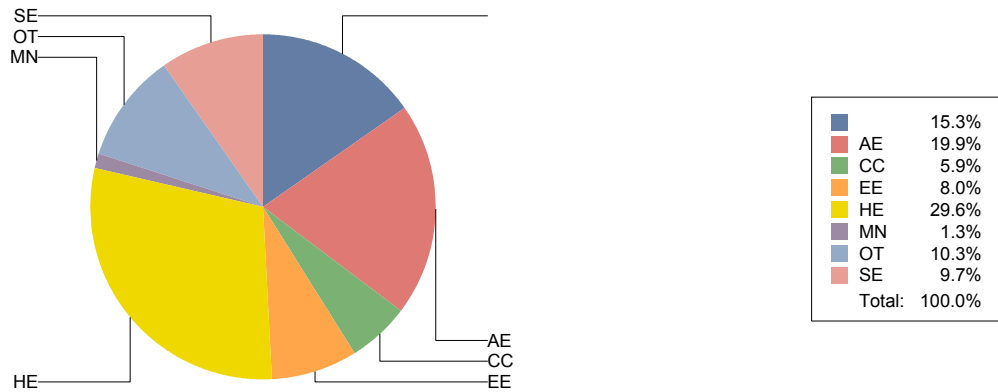


Basic Statistics on Area of Work (Members paid through >= 1/31/2016)

		1,776	15.3%
Adult Education	AE	2,320	19.9%
Community/2yr College	CC	691	5.9%
Elementary Education	EE	929	8.0%
Postsecondary Education	HE	3,447	29.6%
Mainstream	MN	146	1.3%
Other	OT	1,193	10.3%
Secondary Education	SE	1,134	9.7%
		11,636	

Only members who selected an area of work are included on this report. Other members may not have responded to this question and are excluded from the count.

Areas of Work



(Blanks indicate no response)

Statistics on Areas of Interest (Members paid through >= 1/31/2016)

<u>CODE</u>	<u>DESCRIPTION</u>	<u>TOTAL*</u>	<u>% of TOTAL*</u>
TE	Teacher education	1,701	5%
CURRICULUM	Materials development/Curriculum	1,654	4%
EFL	English as a foreign language	1,577	4%
SLA	Second language acquisition	1,553	4%
AL	Applied linguistics	1,473	4%
HE	Higher education	1,447	4%
WRITING	Writing/composition	1,423	4%
IC	Multiculturalism/intercultural communications	1,400	4%
IEP	Intensive English programs	1,396	4%
CALL	Technology in education	1,386	4%
AE	Adult education	1,337	4%
PROFDEV	Professional development	1,285	3%
CONTENT	Content-based instruction	1,245	3%
SP	Speaking/pronunciation	1,141	3%
READING	Reading/literacy	1,135	3%
GRAMMAR	Grammar	1,099	3%
ASSESS	Assessment/testing	1,056	3%
ESP	English for specific purposes	1,018	3%
RS	Research	965	3%
PA	Program administration	766	2%
DISTANCE	Distance learning/Online Education	760	2%
VOCAB	Vocabulary/Lexicon	750	2%
BE	Bilingual education	722	2%
SOCIAL	Social/global/political concerns	649	2%
ISKILL	Integrated Skills	629	2%
WORKPLACE	Workplace English instruction/Business English	628	2%
LISTEN	Listening	613	2%
VI	Video and digital media	592	2%
EE	Elementary/primary education	576	2%
SS	Secondary education	552	1%
COMMCOLL	Community college/technical ed	506	1%
LINGUISTICS	Theoretical Linguistics	423	1%
RC	Refugee concerns	421	1%
STANDARDS	Standards	413	1%
LIT	Literature	381	1%
ITA	International teaching assistants	380	1%
FAMILY	Community/family outreach	321	1%
EMPLOYMENT	Employment issues/Certification	303	1%
NNES	NNES/NES issues	300	1%
LDSN	Learning Disorders/Special Needs	259	1%
ACCRED	Accreditation	257	1%
PUBLICPOLICY	Public policy	257	1%
MAINSTREAMING	Mainstreaming	228	1%
ARTS	Arts/Media/Science/Math/Social Science	171	0%
STYLISTICS	Stylistics	75	0%

Sorted in order of prevalence.

** Note: Members are encouraged to choose multiple areas of interest and some members do not choose any areas of interest. The total number of distinct members (4,679) represented in this report is less than the total number of active members as indicated elsewhere in this report.*

Areas of interest are separate from official TESOL interest sections. Areas of interest represent distinct areas in which a member may be interested, rather than official entities in which a member is involved.

Areas of interest which have a very low count may be recent additions to the AOI list, or may reflect overall trends in membership.

Statistics on Areas of Expertise (Members paid through >= 1/31/2016)

<u>CODE</u>	<u>DESCRIPTION</u>	<u>TOTAL*</u>	<u>% of TOTAL*</u>
EFL	English as a foreign language	1,029	6%
CURRICULUM	Materials development/Curriculum	920	5%
AE	Adult education	884	5%
WRITING	Writing/composition	844	5%
IEP	Intensive English programs	839	5%
TE	Teacher education	782	5%
AL	Applied linguistics	771	4%
HE	Higher education	752	4%
SLA	Second language acquisition	674	4%
CONTENT	Content-based instruction	638	4%
GRAMMAR	Grammar	617	4%
IC	Multiculturalism/intercultural communications	537	3%
CALL	Technology in education	531	3%
PROFDEV	Professional development	502	3%
ESP	English for specific purposes	498	3%
SP	Speaking/pronunciation	465	3%
READING	Reading/literacy	459	3%
PA	Program administration	438	3%
ASSESS	Assessment/testing	424	2%
EE	Elementary/primary education	378	2%
ISKILL	Integrated Skills	361	2%
DISTANCE	Distance learning/Online Education	320	2%
COMMCOLL	Community college/technical ed	304	2%
SS	Secondary education	290	2%
RS	Research	285	2%
BE	Bilingual education	282	2%
WORKPLACE	Workplace English instruction/Business English	272	2%
LISTEN	Listening	258	1%
VOCAB	Vocabulary/Lexicon	221	1%
LIT	Literature	202	1%
SOCIAL	Social/global/political concerns	165	1%
VI	Video and digital media	151	1%
NNES	NNES/NES issues	131	1%
ITA	International teaching assistants	130	1%
ACCRED	Accreditation	128	1%
FAMILY	Community/family outreach	101	1%
LINGUISTICS	Theoretical Linguistics	100	1%
MAINSTREAMING	Mainstreaming	99	1%
STANDARDS	Standards	99	1%
RC	Refugee concerns	92	1%
ARTS	Arts/Media/Science/Math/Social Science	82	0%
LDSN	Learning Disorders/Special Needs	79	0%
EMPLOYMENT	Employment issues/Certification	78	0%
PUBLICPOLICY	Public policy	56	0%
STYLISTICS	Stylistics	20	0%

Sorted in order of prevalence.

** Note: Members are encouraged to choose multiple areas of expertise and some members do not choose any areas of expertise. The total number of distinct members (3,753) represented in this report is less than the total number of active members as indicated elsewhere in this report.*

Areas of Expertise are separate from official TESOL interest sections or Areas of Interest. Areas of expertise represent distinct areas in which a member may be experienced in, rather than official entities in which a member is involved.

Areas of interest which have a very low count may be recent additions to the AOI list, or may reflect overall trends in membership.