

8/9/2016

Membership Statistics: Grand totals for basic membership, by member type and country

		<u># Memberships</u>	<u># Members</u>
IND	BASIC		
	Existing Member(s)	4,452	4,452
	New as of 7/1/2016 or later	30	30
IND	BASIC	4,482	4,482

IND2	BASIC		
	Existing Member(s)	2,041	2,041
	New as of 7/1/2016 or later	5	5
IND2	BASIC	2,046	2,046

STU	BASIC		
	Existing Member(s)	868	868
	New as of 7/1/2016 or later	39	39
STU	BASIC	907	907

STU2	BASIC		
	Existing Member(s)	391	391
	New as of 7/1/2016 or later	6	6
STU2	BASIC	397	397

LIF	BASIC		
	Existing Member(s)	51	51
LIF	BASIC	51	51

RET	BASIC		
	Existing Member(s)	153	153
RET	BASIC	153	153

RET2	BASIC		
	Existing Member(s)	110	110
RET2	BASIC	110	110

PTR	BASIC		
	Existing Member(s)	452	452
	New as of 7/1/2016 or later	7	7
PTR	BASIC	459	459

PTR2	BASIC		
	Existing Member(s)	255	255
	New as of 7/1/2016 or later	3	3
PTR2	BASIC	258	258

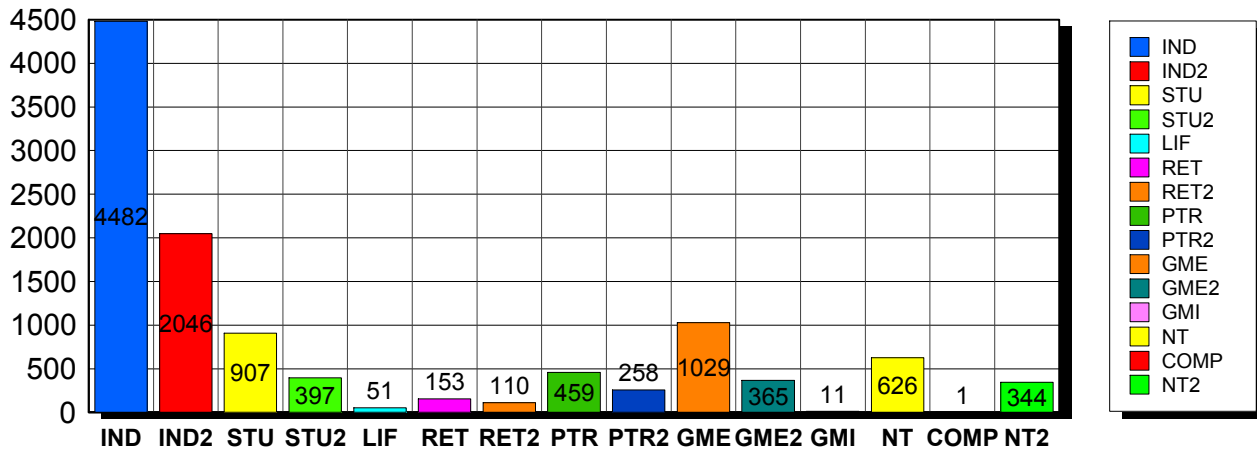
GME	BASIC		
	Existing Member(s)	1,007	1,007
	New as of 7/1/2016 or later	22	22
GME	BASIC	1,029	1,029

GME2	BASIC		
	Existing Member(s)	362	362
	New as of 7/1/2016 or later	3	3
GME2	BASIC	365	365

GMI	BASIC		

	Existing Member(s)	11	11
GMI	BASIC	11	11
<hr/>			
NT	BASIC		
	Existing Member(s)	609	609
	New as of 7/1/2016 or later	17	17
NT	BASIC	626	626
<hr/>			
COMP	BASIC		
	Existing Member(s)	1	1
COMP	BASIC	1	1
<hr/>			
NT2	BASIC		
	Existing Member(s)	342	342
	New as of 7/1/2016 or later	2	2
NT2	BASIC	344	344
<hr/>			
Grand Total:		11,239	11,239

Member Types



Note: in all general statistic reports, joint household memberships are treated as "one" member EXCEPT in the second column of this report, where joints are counted as two people, providing the most accurate count of the number of TESOL members.

		Existing Member(s)	New as of 7/1/2016 or later	Total
COMP	United States	1	0	1
	Total	1	0	1
GME	United States	35	1	36
	AFGHANISTAN	2	0	2
	ALBANIA	1	1	2
	ALGERIA	4	2	6
	ARGENTINA	23	0	23

		Existing Member(s)	New as of 7/1/2016 or later	Total
GME	ARMENIA	1	0	1
	AZERBAIJAN	6	0	6
	BAHRAIN	1	0	1
	BANGLADESH	14	1	15
	BELIZE	1	0	1
	BOLIVIA	17	0	17
	BOSNIA AND	1	0	1
	BRAZIL	61	0	61
	BULGARIA	3	0	3
	CAMBODIA	4	0	4
	CAMEROON	2	0	2
	CHILE	6	0	6
	CHINA	101	0	101
	COLOMBIA	16	0	16
	COMOROS	1	0	1
	COSTA RICA	15	0	15
	CROATIA	6	0	6
	CUBA	1	0	1
	DOMINICA	1	0	1
	DOMINICAN	17	0	17
	ECUADOR	79	1	80
	EGYPT	31	0	31
	EL SALVADOR	2	0	2
	GEORGIA	3	0	3
	GUATEMALA	14	0	14
	HAITI	11	0	11
	HONDURAS	5	0	5
	HONG KONG	1	0	1
	HONG KONG	1	0	1
	HUNGARY	3	0	3
INDIA	58	0	58	

		Existing Member(s)	New as of 7/1/2016 or later	Total
GME	INDONESIA	7	0	7
	IRAN	6	0	6
	IRAN, ISLAMIC	1	0	1
	IRAQ	3	0	3
	ISRAEL	1	0	1
	JAMAICA	1	0	1
	JAPAN	1	0	1
	JORDAN	4	0	4
	KAZAKHSTAN	1	0	1
	KOSOVO	1	0	1
	KYRGYZSTAN	1	0	1
	Lao People's	1	0	1
	LATVIA	1	0	1
	LEBANON	6	0	6
	MACEDONIA	1	0	1
	MADAGASCAR	2	0	2
	MALAYSIA	12	7	19
	MALI	1	0	1
	MAURITANIA	2	0	2
	MEXICO	43	2	45
	MOLDOVA,	1	0	1
	MONGOLIA	4	0	4
	MOROCCO	29	0	29
	MYANMAR	2	0	2
	NEPAL	16	0	16
	NEW ZEALAND	1	0	1
	NICARAGUA	3	0	3
NIGERIA	4	0	4	
NORWAY	1	0	1	
PAKISTAN	13	0	13	
PALESTINIAN	1	0	1	

		Existing Member(s)	New as of 7/1/2016 or later	Total
GME	PANAMA	18	0	18
	PARAGUAY	3	0	3
	PEOPLES REP	24	0	24
	PERU	94	0	94
	PHILIPPINES	24	2	26
	POLAND	4	0	4
	ROMANIA	1	0	1
	RUSSIA	3	0	3
	RUSSIAN	8	1	9
	RWANDA	3	2	5
	SENEGAL	1	0	1
	SERBIA	5	0	5
	SOUTH AFRICA	2	0	2
	SRI LANKA	4	0	4
	SUDAN	1	0	1
	SWAZILAND	1	0	1
	SYRIAN ARAB	1	0	1
	TAIWAN	2	0	2
	TAIWAN ROC	2	0	2
	TANZANIA,	1	0	1
	THAILAND	14	0	14
	TUNISIA	2	0	2
	TURKEY	24	2	26
	UKRAINE	7	0	7
	UNITED	1	0	1
	URUGUAY	6	0	6
	VENEZUELA	24	0	24
	VIET NAM	2	0	2
	VIETNAM	5	0	5
	YEMEN	1	0	1
Total		1,007	22	1,029

		Existing Member(s)	New as of 7/1/2016 or later	Total
GME2	United States	8	0	8
	AFGHANISTAN	1	0	1
	ALBANIA	1	0	1
	ANGOLA	1	0	1
	ARGENTINA	6	0	6
	ARMENIA	1	0	1
	BANGLADESH	1	0	1
	BELARUS	1	0	1
	BENIN	1	0	1
	BOLIVIA	4	0	4
	BRAZIL	20	0	20
	BULGARIA	4	0	4
	BURKINA FASO	1	0	1
	CAMEROON	1	0	1
	CHILE	7	0	7
	CHINA	53	0	53
	COLOMBIA	12	0	12
	COSTA RICA	5	0	5
	DOMINICAN	8	0	8
	ECUADOR	17	0	17
	EGYPT	4	0	4
	GABON	2	0	2
	GEORGIA	1	0	1
	GRENADA	1	0	1
	GUATEMALA	1	0	1
	HONDURAS	1	0	1
	INDIA	21	1	22
	INDONESIA	3	0	3
	IRAQ	2	0	2
	JORDAN	3	0	3
KAZAKHSTAN	4	0	4	

		Existing Member(s)	New as of 7/1/2016 or later	Total
GME2	LATVIA	2	0	2
	LEBANON	3	0	3
	LITHUANIA	1	0	1
	MADAGASCAR	1	0	1
	MALAYSIA	6	0	6
	MAURITANIA	1	0	1
	MAURITIUS	1	0	1
	MEXICO	19	1	20
	MOLDOVA,	1	0	1
	MONGOLIA	7	0	7
	MOROCCO	3	0	3
	MOZAMBIQUE	1	0	1
	NAMIBIA	1	0	1
	NEPAL	5	0	5
	NIGER	1	0	1
	NIGERIA	4	1	5
	PAKISTAN	3	0	3
	PANAMA	2	0	2
	PARAGUAY	1	0	1
	PEOPLES REP	2	0	2
	PERU	7	0	7
	PHILIPPINES	6	0	6
	POLAND	6	0	6
	RUSSIA	3	0	3
	RUSSIAN	5	0	5
	SENEGAL	1	0	1
	SIERRA LEONE	1	0	1
	SRI LANKA	2	0	2
	TAIWAN ROC	3	0	3
	TAJIKISTAN	2	0	2
THAILAND	16	0	16	

		Existing Member(s)	New as of 7/1/2016 or later	Total
GME2	TUNISIA	1	0	1
	TURKEY	15	0	15
	UNITED	1	0	1
	United States	1	0	1
	URUGUAY	4	0	4
	UZBEKISTAN	19	0	19
	VENEZUELA	2	0	2
	VIET NAM	1	0	1
	VIETNAM	4	0	4
	YEMEN	1	0	1
	Total	362	3	365
GMI	BELARUS	1	0	1
	BRAZIL	2	0	2
	CHINA	2	0	2
	HUNGARY	1	0	1
	KOSOVO	1	0	1
	MEXICO	1	0	1
	PERU	3	0	3
	Total	11	0	11
IND	United States	3,908	27	3,935
	02453-2728	1	0	1
	ANGOLA	1	0	1
	ARGENTINA	1	0	1
	AUSTRALIA	15	0	15
	AUSTRIA	1	0	1
	BERMUDA	1	0	1
	BRAZIL	7	0	7
	CANADA	114	0	114
	CHILE	3	0	3
	CHINA	8	0	8
	COLOMBIA	1	0	1

		Existing Member(s)	New as of 7/1/2016 or later	Total
IND	CZECH	5	0	5
	DENMARK	2	0	2
	ECUADOR	13	0	13
	EGYPT	4	0	4
	FINLAND	1	0	1
	FRANCE	4	0	4
	GERMANY	5	0	5
	GREECE	2	0	2
	HAITI	1	0	1
	HONG KONG	4	0	4
	HONG KONG	2	0	2
	HUNGARY	2	0	2
	INDIA	1	0	1
	IRAN	1	0	1
	IRAQ	1	0	1
	IRELAND	1	0	1
	ISRAEL	3	0	3
	ITALY	4	0	4
	JAPAN	169	0	169
	Korea, Republic	4	0	4
	KOREA,	1	0	1
	KOREA,	5	0	5
	KOSOVO	1	0	1
	KUWAIT	8	0	8
	LEBANON	1	0	1
	LIBYA	1	0	1
	MALAYSIA	1	0	1
MEXICO	4	0	4	
NETHERLAND	3	0	3	
NEW ZEALAND	3	0	3	
NIGERIA	1	0	1	

		Existing Member(s)	New as of 7/1/2016 or later	Total
IND	NORWAY	5	0	5
	OMAN	5	0	5
	PAKISTAN	2	0	2
	PALESTINIAN	1	0	1
	PARAGUAY	1	0	1
	PEOPLES REP	1	0	1
	PERU	5	0	5
	PORTUGAL	1	0	1
	QATAR	8	0	8
	SAUDI ARABIA	15	0	15
	SINGAPORE	4	0	4
	SLOVAKIA	1	0	1
	SOUTH AFRICA	1	1	2
	SOUTH KOREA	9	0	9
	SPAIN	4	0	4
	SWEDEN	6	0	6
	SWITZERLAND	1	0	1
	TAIWAN	7	0	7
	TAIWAN ROC	2	0	2
	THAILAND	4	0	4
	TRINIDAD AND	2	0	2
	UGANDA	1	0	1
	UNITED ARAB	22	0	22
	UNITED	11	1	12
	United States	5	0	5
	UNITED	4	0	4
	URUGUAY	1	0	1
	VANUATU	1	1	2
	VIET NAM	2	0	2
	YEMEN	1	0	1
Total		4,452	30	4,482

		Existing Member(s)	New as of 7/1/2016 or later	Total
IND2	United States	1,689	4	1,693
	AUSTRALIA	15	0	15
	AUSTRIA	2	0	2
	BAHRAIN	1	0	1
	BENIN	1	0	1
	BRAZIL	1	0	1
	CANADA	102	0	102
	CAYMAN	1	0	1
	CHILE	1	0	1
	CHINA	8	0	8
	COLOMBIA	2	0	2
	COSTA RICA	1	0	1
	CYPRUS	2	0	2
	DENMARK	1	0	1
	FINLAND	1	0	1
	FRANCE	1	0	1
	GERMANY	5	0	5
	HONG KONG	3	0	3
	HONG KONG	8	0	8
	INDIA	3	0	3
	INDONESIA	1	0	1
	IRAQ	1	0	1
	ITALY	4	0	4
	JAPAN	90	0	90
	Korea, Republic	1	0	1
	KOREA,	3	0	3
	KUWAIT	3	0	3
	Lao People's	1	0	1
	LUXEMBOURG	1	0	1
	MACAO	4	0	4
MALAYSIA	3	0	3	

		Existing Member(s)	New as of 7/1/2016 or later	Total
IND2	MARTINIQUE	1	0	1
	NEW	1	0	1
	NEW ZEALAND	3	0	3
	NICARAGUA	1	0	1
	NIGERIA	1	0	1
	NORWAY	2	0	2
	OMAN	1	0	1
	QATAR	11	0	11
	ROMANIA	1	0	1
	SAUDI ARABIA	9	0	9
	SERBIA	1	0	1
	SINGAPORE	3	1	4
	SLOVAKIA	1	0	1
	SOUTH KOREA	8	0	8
	SWITZERLAND	2	0	2
	TAIWAN	5	0	5
	TAIWAN ROC	2	0	2
	THAILAND	1	0	1
	TRINIDAD AND	1	0	1
	TURKEY	2	0	2
	UKRAINE	2	0	2
	UNITED ARAB	8	0	8
	UNITED	5	0	5
	United States	4	0	4
UNITED	2	0	2	
URUGUAY	2	0	2	
VENEZUELA	1	0	1	
Total	2,041	5	2,046	
LIF	United States	42	0	42
	AUSTRALIA	1	0	1
	CANADA	2	0	2

		Existing Member(s)	New as of 7/1/2016 or later	Total
LIF	EGYPT	1	0	1
	ISRAEL	1	0	1
	JAPAN	1	0	1
	UNITED ARAB	1	0	1
	UNITED	2	0	2
	Total	51	0	51
NT	United States	550	15	565
	AUSTRALIA	2	0	2
	AUSTRIA	1	0	1
	CANADA	10	0	10
	CHINA	2	0	2
	COLOMBIA	1	0	1
	ECUADOR	2	0	2
	FRANCE	1	0	1
	GERMANY	1	0	1
	HONG KONG	1	0	1
	HONG KONG	1	0	1
	INDIA	0	1	1
	IRAQ	1	0	1
	ITALY	2	0	2
	JAPAN	12	0	12
	KUWAIT	1	0	1
	MATARA	1	0	1
	MEXICO	2	0	2
	MONGOLIA	1	0	1
	NEW ZEALAND	1	0	1
	PALESTINIAN	2	0	2
	PERU	1	0	1
	QATAR	1	0	1
RUSSIA	1	0	1	
RUSSIAN	1	0	1	

		Existing Member(s)	New as of 7/1/2016 or later	Total
NT	SINGAPORE	1	0	1
	SOUTH KOREA	3	0	3
	THAILAND	1	0	1
	TURKEY	1	0	1
	UNITED	4	0	4
	VIET NAM	0	1	1
	Total	609	17	626
NT2	United States	313	1	314
	AUSTRALIA	1	0	1
	CANADA	10	0	10
	HONG KONG	0	1	1
	HONG KONG	2	0	2
	HUNGARY	1	0	1
	ITALY	1	0	1
	JAPAN	2	0	2
	KOREA,	1	0	1
	KUWAIT	1	0	1
	MEXICO	1	0	1
	NEW ZEALAND	1	0	1
	SAUDI ARABIA	1	0	1
	SINGAPORE	2	0	2
	SOUTH KOREA	1	0	1
	TAIWAN	2	0	2
	UNITED ARAB	1	0	1
	UNITED	1	0	1
	Total	342	2	344
	PTR	United States	354	6
AUSTRALIA		1	0	1
CANADA		11	1	12
CHINA		5	0	5
COLOMBIA		3	0	3

		Existing Member(s)	New as of 7/1/2016 or later	Total
PTR	COSTA RICA	3	0	3
	DOMINICAN	2	0	2
	ECUADOR	12	0	12
	EGYPT	1	0	1
	FRANCE	1	0	1
	GERMANY	1	0	1
	HAITI	1	0	1
	ICELAND	1	0	1
	INDONESIA	2	0	2
	JAPAN	8	0	8
	Korea, Republic	1	0	1
	KUWAIT	1	0	1
	Lao People's	1	0	1
	LITHUANIA	1	0	1
	MACAO	1	0	1
	MEXICO	1	0	1
	MOROCCO	1	0	1
	NEW ZEALAND	1	0	1
	NICARAGUA	2	0	2
	NIGERIA	1	0	1
	PAKISTAN	1	0	1
	PANAMA	1	0	1
	PHILIPPINES	3	0	3
	POLAND	1	0	1
	Puerto Rico	3	0	3
	SAUDI ARABIA	1	0	1
	SENEGAL	1	0	1
	SINGAPORE	1	0	1
	SOUTH AFRICA	1	0	1
	SPAIN	3	0	3
TANZANIA,	4	0	4	

		Existing Member(s)	New as of 7/1/2016 or later	Total
PTR	THAILAND	2	0	2
	TURKEY	4	0	4
	UNITED ARAB	2	0	2
	UNITED	5	0	5
	United States	1	0	1
	VENEZUELA	1	0	1
	Total	452	7	459
PTR2	United States	207	2	209
	BRAZIL	2	0	2
	CANADA	11	0	11
	CHILE	1	0	1
	CHINA	2	0	2
	COLOMBIA	1	0	1
	GERMANY	1	0	1
	HONG KONG	1	0	1
	INDONESIA	1	0	1
	ISRAEL	1	0	1
	ITALY	1	0	1
	JAPAN	4	0	4
	MACAO	1	0	1
	MEXICO	1	0	1
	NIGERIA	0	1	1
	PHILIPPINES	1	0	1
	POLAND	1	0	1
	SAUDI ARABIA	5	0	5
	SRI LANKA	1	0	1
	TAIWAN	5	0	5
	THAILAND	1	0	1
	TURKEY	4	0	4
	UGANDA	1	0	1
	UNITED ARAB	1	0	1

		Existing Member(s)	New as of 7/1/2016 or later	Total
PTR2	Total	255	3	258
RET	United States	137	0	137
	AUSTRALIA	1	0	1
	BRAZIL	1	0	1
	CANADA	4	0	4
	COLOMBIA	1	0	1
	GERMANY	1	0	1
	ISRAEL	1	0	1
	JAPAN	3	0	3
	MEXICO	1	0	1
	PORTUGAL	1	0	1
	SRI LANKA	1	0	1
	TURKEY	1	0	1
	Total	153	0	153
RET2	United States	94	0	94
	CANADA	1	0	1
	GERMANY	1	0	1
	ISRAEL	3	0	3
	JAPAN	4	0	4
	NEW ZEALAND	1	0	1
	OMAN	1	0	1
	SOUTH KOREA	1	0	1
	SPAIN	1	0	1
	THAILAND	1	0	1
	UNITED	2	0	2
	Total	110	0	110
STU	United States	755	36	791
	AUSTRALIA	6	0	6
	BELGIUM	1	0	1
	BRAZIL	3	0	3
	CANADA	26	0	26

		Existing Member(s)	New as of 7/1/2016 or later	Total
STU	CHINA	5	0	5
	COLOMBIA	1	0	1
	ECUADOR	1	1	2
	GERMANY	1	0	1
	GHANA	1	0	1
	GUATEMALA	1	0	1
	HONDURAS	1	0	1
	HONG KONG	2	1	3
	HONG KONG	3	0	3
	INDONESIA	1	0	1
	ITALY	1	0	1
	JAPAN	11	0	11
	KOREA,	1	0	1
	KUWAIT	1	0	1
	MALAYSIA	1	0	1
	MEXICO	7	0	7
	NEPAL	1	0	1
	NEW ZEALAND	2	0	2
	PAKISTAN	1	0	1
	PHILIPPINES	2	0	2
	Puerto Rico	1	0	1
	RUSSIAN	2	0	2
	SAUDI ARABIA	6	0	6
	SINGAPORE	0	1	1
	SOUTH AFRICA	1	0	1
	SOUTH KOREA	1	0	1
	TAIWAN	3	0	3
	THAILAND	2	0	2
	TURKEY	9	0	9
	UNITED ARAB	2	0	2
UNITED	3	0	3	

		Existing Member(s)	New as of 7/1/2016 or later	Total
STU	United States	1	0	1
	UNITED	1	0	1
	Total	868	39	907
STU2	United States	341	6	347
	ALBANIA	2	0	2
	AUSTRALIA	3	0	3
	BRAZIL	2	0	2
	CAMEROON	2	0	2
	CANADA	16	0	16
	CHINA	1	0	1
	FRANCE	1	0	1
	GERMANY	1	0	1
	HONG KONG	2	0	2
	HONG KONG	1	0	1
	INDONESIA	1	0	1
	JAPAN	3	0	3
	Korea, Republic	2	0	2
	LATVIA	1	0	1
	MACAO	1	0	1
	NEW ZEALAND	1	0	1
	OMAN	1	0	1
	Puerto Rico	1	0	1
	SINGAPORE	1	0	1
	THAILAND	1	0	1
	UNITED	4	0	4
	United States	1	0	1
VIET NAM	1	0	1	
Total	391	6	397	
Total		11,105	134	11,239

This report is based on members paid through 7/31/2016 or later.

Country/State/Province	Total	
02453-2728	1	0.0%
AFGHANISTAN	3	0.0%
ALBANIA	5	0.0%
ALGERIA	6	0.1%
ANGOLA	2	0.0%
ARGENTINA	30	0.3%
ARMENIA	2	0.0%
AUSTRALIA	45	0.4%
AUSTRIA	4	0.0%
AZERBAIJAN	6	0.1%
BAHRAIN	2	0.0%
BANGLADESH	16	0.1%
BELARUS	2	0.0%
BELGIUM	1	0.0%
BELIZE	1	0.0%
BENIN	2	0.0%
BERMUDA	1	0.0%
BOLIVIA	21	0.2%
BOSNIA AND HERZEGOVINA	1	0.0%
BRAZIL	99	0.9%
BULGARIA	7	0.1%
BURKINA FASO	1	0.0%
CAMBODIA	4	0.0%
CAMEROON	5	0.0%
CANADA		
<i>CANADA</i>	<i>4</i>	
<i>CANADA Alberta</i>	<i>27</i>	
<i>CANADA Armed Frces Americas</i>	<i>1</i>	
<i>CANADA British Columbia</i>	<i>88</i>	
<i>CANADA Manitoba</i>	<i>11</i>	
<i>CANADA New Brunswick</i>	<i>7</i>	
<i>CANADA Northwest Territories</i>	<i>1</i>	
<i>CANADA Nova Scotia</i>	<i>9</i>	
<i>CANADA Ontario</i>	<i>126</i>	
<i>CANADA Quebec</i>	<i>21</i>	
<i>CANADA Saskatchewan</i>	<i>12</i>	
<i>CANADA Washington</i>	<i>1</i>	
CANADA	308	2.7%
CAYMAN ISLANDS	1	0.0%
CHILE	18	0.2%
CHINA	187	1.7%
COLOMBIA	38	0.3%
COMOROS	1	0.0%
COSTA RICA	24	0.2%
CROATIA	6	0.1%
CUBA	1	0.0%
CYPRUS	2	0.0%
CZECH REPUBLIC	5	0.0%
DENMARK	3	0.0%
DOMINICA	1	0.0%
DOMINICAN REPUBLIC	27	0.2%
ECUADOR	126	1.1%
EGYPT	41	0.4%
EL SALVADOR	2	0.0%
FINLAND	2	0.0%
FRANCE	8	0.1%
GABON	2	0.0%

GEORGIA	4	0.0%
GERMANY	17	0.2%
GHANA	1	0.0%
GREECE	2	0.0%
GRENADA	1	0.0%
GUATEMALA	16	0.1%
HAITI	13	0.1%
HONDURAS	7	0.1%
HONG KONG	16	0.1%
HONG KONG SAR CHINA	18	0.2%
HUNGARY	7	0.1%
ICELAND	1	0.0%
INDIA	85	0.8%
INDONESIA	16	0.1%
IRAN	7	0.1%
IRAN, ISLAMIC REPUBLIC OF	1	0.0%
IRAQ	8	0.1%
IRELAND	1	0.0%
ISRAEL	10	0.1%
ITALY	13	0.1%
JAMAICA	1	0.0%
JAPAN	308	2.7%
JORDAN	7	0.1%
KAZAKHSTAN	5	0.0%
Korea, Republic Of	8	0.1%
KOREA, REPUBLIC OF	1	0.0%
KOREA, REPUBLIC OF	10	0.1%
KOSOVO (UNMIK)	3	0.0%
KUWAIT	15	0.1%
KYRGYZSTAN	1	0.0%
Lao People's Dem Republic	3	0.0%
LATVIA	4	0.0%
LEBANON	10	0.1%
LIBYA	1	0.0%
LITHUANIA	2	0.0%
LUXEMBOURG	1	0.0%
MACAO	7	0.1%
MACEDONIA	1	0.0%
MADAGASCAR	3	0.0%
MALAYSIA	30	0.3%
MALI	1	0.0%
MARTINIQUE	1	0.0%
MATARA	1	0.0%
MAURITANIA	3	0.0%
MAURITIUS	1	0.0%
MEXICO	83	0.7%
MOLDOVA, REPUBLIC OF	2	0.0%
MONGOLIA	12	0.1%
MOROCCO	33	0.3%
MOZAMBIOUE	1	0.0%
MYANMAR	2	0.0%
NAMIBIA	1	0.0%
NEPAL	22	0.2%
NETHERLANDS	3	0.0%
NEW CALEDONIA	1	0.0%
NEW ZEALAND	14	0.1%
NICARAGUA	6	0.1%
NIGER	1	0.0%
NIGERIA	13	0.1%
NORWAY	8	0.1%
OMAN	8	0.1%

PAKISTAN	20	0.2%
PALESTINIAN TERRITORY	4	0.0%
PANAMA	21	0.2%
PARAGUAY	5	0.0%
PEOPLES REP OF CHINA	27	0.2%
PERU	110	1.0%
PHILIPPINES	38	0.3%
POLAND	12	0.1%
PORTUGAL	2	0.0%
Puerto Rico	5	0.0%
OATAR	20	0.2%
ROMANIA	2	0.0%
RUSSIA	7	0.1%
RUSSIAN FEDERATION	17	0.2%
RWANDA	5	0.0%
SAUDI ARABIA	37	0.3%
SENEGAL	3	0.0%
SERBIA	6	0.1%
SIERRA LEONE	1	0.0%
SINGAPORE	14	0.1%
SLOVAKIA	2	0.0%
SOUTH AFRICA	6	0.1%
SOUTH KOREA	23	0.2%
SPAIN	8	0.1%
SRI LANKA	8	0.1%
SUDAN	1	0.0%
SWAZILAND	1	0.0%
SWEDEN	6	0.1%
SWITZERLAND	3	0.0%
SYRIAN ARAB REPUBLIC	1	0.0%
TAIWAN	24	0.2%
TAIWAN ROC	9	0.1%
TAJKISTAN	2	0.0%
TANZANIA, UNITED REPUBLIC	5	0.0%
THAILAND	43	0.4%
TRINIDAD AND TOBAGO	3	0.0%
TUNISIA	3	0.0%
TURKEY	62	0.6%
UGANDA	2	0.0%
UKRAINE	9	0.1%
UNITED ARAB EMIRATES	37	0.3%
UNITED KINGDOM	36	0.3%
United States	13	0.1%
UNITED STATES OF AMERICA	11	0.1%
URUGUAY	13	0.1%
USA		
<i>USA</i>	<i>52</i>	
<i>USA</i>	<i>Alabama</i>	<i>98</i>
<i>USA</i>	<i>Alaska</i>	<i>15</i>
<i>USA</i>	<i>American Embassy</i>	<i>12</i>
<i>USA</i>	<i>Arizona</i>	<i>158</i>
<i>USA</i>	<i>Arkansas</i>	<i>53</i>
<i>USA</i>	<i>Armed Forces</i>	<i>8</i>
<i>USA</i>	<i>Armed Frces Americas</i>	<i>3</i>
<i>USA</i>	<i>British Columbia</i>	<i>1</i>
<i>USA</i>	<i>California</i>	<i>729</i>
<i>USA</i>	<i>Colorado</i>	<i>133</i>
<i>USA</i>	<i>Connecticut</i>	<i>130</i>
<i>USA</i>	<i>Delaware</i>	<i>81</i>
<i>USA</i>	<i>District of Columbia</i>	<i>194</i>
<i>USA</i>	<i>Florida</i>	<i>325</i>

<i>USA</i>	<i>Georgia</i>	<i>176</i>	
<i>USA</i>	<i>Guam</i>	<i>1</i>	
<i>USA</i>	<i>Hawaii</i>	<i>49</i>	
<i>USA</i>	<i>Idaho</i>	<i>39</i>	
<i>USA</i>	<i>Illinois</i>	<i>304</i>	
<i>USA</i>	<i>Indiana</i>	<i>152</i>	
<i>USA</i>	<i>Iowa</i>	<i>94</i>	
<i>USA</i>	<i>Kansas</i>	<i>141</i>	
<i>USA</i>	<i>Kentucky</i>	<i>85</i>	
<i>USA</i>	<i>Lousiana</i>	<i>46</i>	
<i>USA</i>	<i>Maine</i>	<i>53</i>	
<i>USA</i>	<i>Manitoba</i>	<i>1</i>	
<i>USA</i>	<i>Maryland</i>	<i>512</i>	
<i>USA</i>	<i>Massachusetts</i>	<i>307</i>	
<i>USA</i>	<i>Michigan</i>	<i>252</i>	
<i>USA</i>	<i>Minnesota</i>	<i>127</i>	
<i>USA</i>	<i>Mississippi</i>	<i>64</i>	
<i>USA</i>	<i>Missouri</i>	<i>191</i>	
<i>USA</i>	<i>Montana</i>	<i>12</i>	
<i>USA</i>	<i>Nebraska</i>	<i>58</i>	
<i>USA</i>	<i>Nevada</i>	<i>40</i>	
<i>USA</i>	<i>New Hampshire</i>	<i>55</i>	
<i>USA</i>	<i>New Jersey</i>	<i>250</i>	
<i>USA</i>	<i>New Mexico</i>	<i>44</i>	
<i>USA</i>	<i>New York</i>	<i>658</i>	
<i>USA</i>	<i>North Carolina</i>	<i>173</i>	
<i>USA</i>	<i>North Dakota</i>	<i>21</i>	
<i>USA</i>	<i>Ohio</i>	<i>269</i>	
<i>USA</i>	<i>Oklahoma</i>	<i>49</i>	
<i>USA</i>	<i>Ontario</i>	<i>1</i>	
<i>USA</i>	<i>Oregon</i>	<i>209</i>	
<i>USA</i>	<i>Pennsylvania</i>	<i>395</i>	
<i>USA</i>	<i>Prince Edward Island</i>	<i>1</i>	
<i>USA</i>	<i>Puerto Rico</i>	<i>21</i>	
<i>USA</i>	<i>Rhode Island</i>	<i>57</i>	
<i>USA</i>	<i>Saskatchewan</i>	<i>1</i>	
<i>USA</i>	<i>South Carolina</i>	<i>55</i>	
<i>USA</i>	<i>South Dakota</i>	<i>14</i>	
<i>USA</i>	<i>Tennessee</i>	<i>112</i>	
<i>USA</i>	<i>Texas</i>	<i>385</i>	
<i>USA</i>	<i>Utah</i>	<i>79</i>	
<i>USA</i>	<i>Vermont</i>	<i>67</i>	
<i>USA</i>	<i>Virginia</i>	<i>499</i>	
<i>USA</i>	<i>Washington</i>	<i>252</i>	
<i>USA</i>	<i>West Virginia</i>	<i>33</i>	
<i>USA</i>	<i>Wisconsin</i>	<i>126</i>	
<i>USA</i>	<i>Wyoming</i>	<i>10</i>	
USA		8,532	75.9%
UZBEKISTAN		19	0.2%
VANUATU		2	0.0%
VENEZUELA		28	0.2%
VIET NAM		7	0.1%
VIETNAM		9	0.1%
YEMEN		3	0.0%
Grand Total:		11,239	

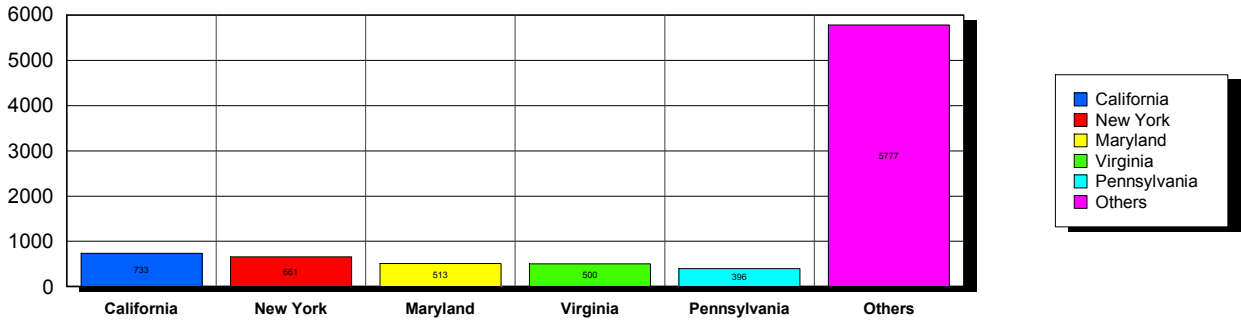
157 distinct countries represented.

8/9/2016

Membership counts by country for members paid through 07/31/2016 or later.

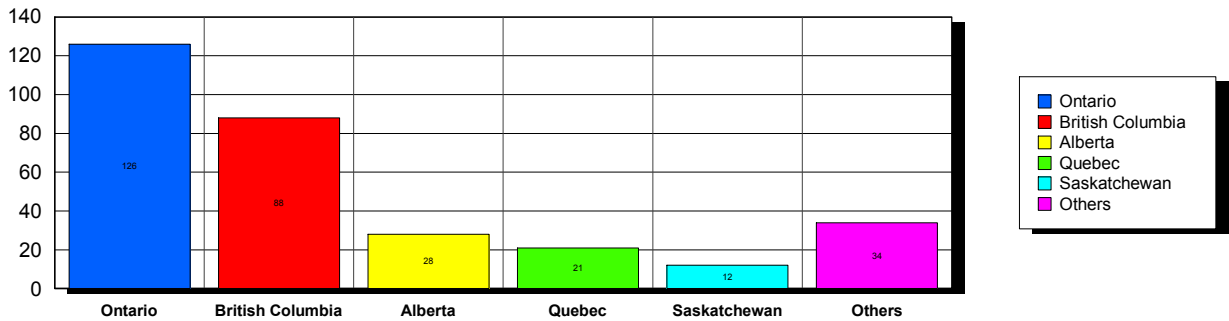
USA

Top 5 States per Country

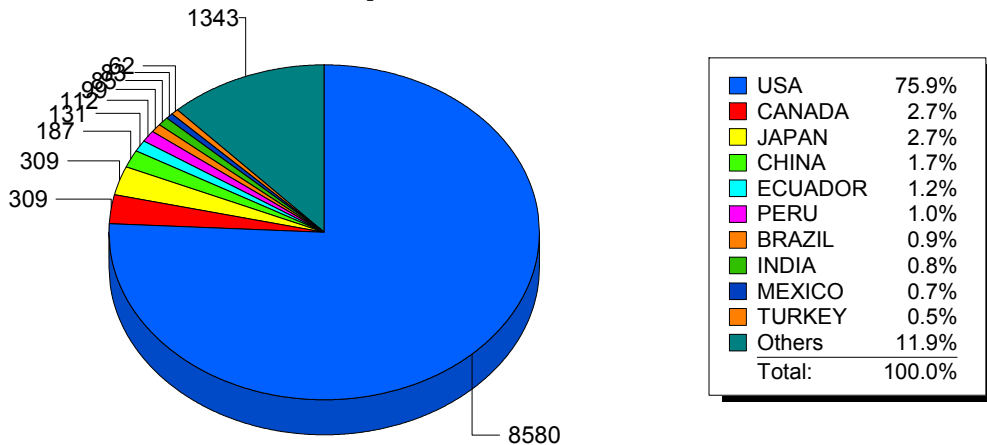


CANADA

Top 5 States per Country



Top 10 Countries



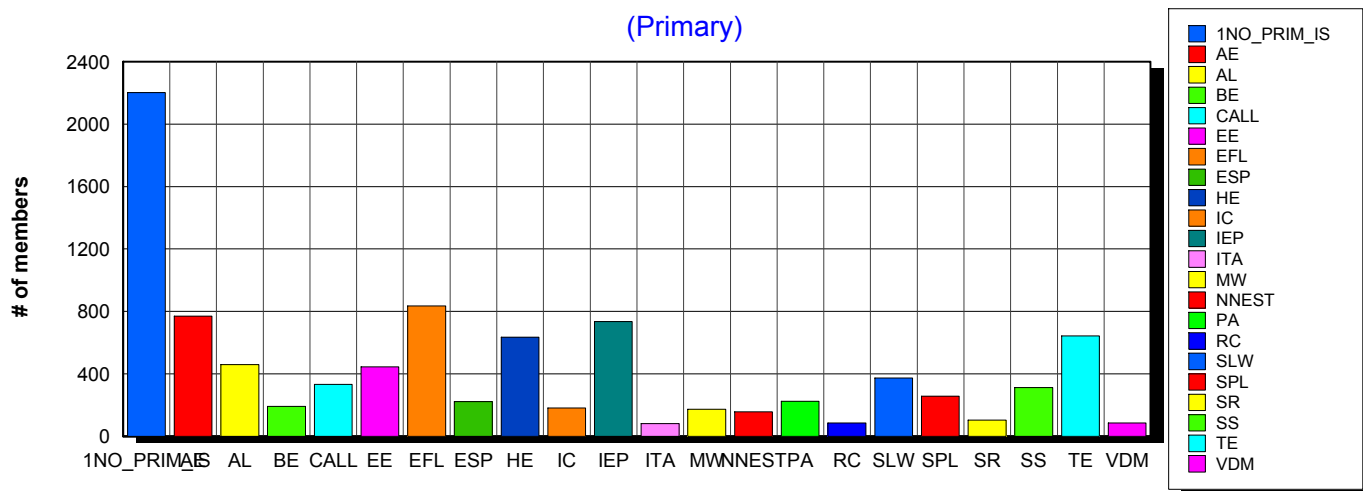
Basic statistics on Primary vs. other memberships in interest sections. For members paid through 7/31/2016 or later.

		<i>Primary versus other</i>			
No Primary Interest Section	6.8%	2,211	2,202	9	
Adult Education	6.3%	2,025	769	1,256	
Applied Linguistics	5.8%	1,884	459	1,425	
Bilingual Education	3.2%	1,023	191	832	
Computer-Assisted Language Learning	5.1%	1,642	333	1,309	
Elementary Education	3.2%	1,045	445	600	
English as a Foreign Language	6.9%	2,233	836	1,397	
English for Specific Purposes	4.4%	1,418	222	1,196	
Higher Education	6.2%	2,003	635	1,368	
Intercultural Communication	4.9%	1,577	182	1,395	
Intensive English Programs	6.1%	1,984	734	1,250	
International Teaching Assistants	1.9%	622	81	541	
Materials Writers	3.4%	1,103	173	930	
Nonnative English Speakers in TESOL	2.9%	927	157	770	
Program Administration	3.5%	1,130	223	907	
Refugee Concerns	2.3%	739	84	655	
Second Language Writing	6.1%	1,982	373	1,609	
Speech, Pronunciation, and Listening	5.3%	1,726	256	1,470	
Social Responsibility	2.2%	721	104	617	
Secondary Schools	2.8%	918	311	607	
Teacher Education	7.3%	2,350	643	1,707	
Video & Digital Media	3.5%	1,127	84	1,043	
<i>9,520 distinct members</i>		Total # of IS memberships	32,390	9,497	22,893

The total count is the number of IS memberships total and may either be LESS or MORE than the actual number of individual members of TESOL. Due to open access to Interest Sections, these numbers may fluctuate considerably each month. For instance, one member may have selected four interest sections, while some members may belong to none.

Interest Sections

(Primary)

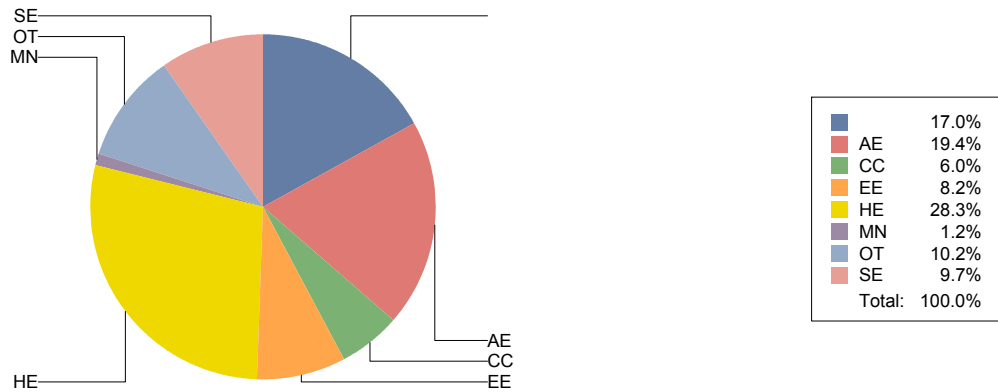


Basic Statistics on Area of Work (Members paid through >= 7/31/2016)

		1,899	17.0%
Adult Education	AE	2,169	19.4%
Community/2yr College	CC	669	6.0%
Elementary Education	EE	912	8.2%
Postsecondary Education	HE	3,167	28.3%
Mainstream	MN	137	1.2%
Other	OT	1,144	10.2%
Secondary Education	SE	1,086	9.7%
		11,183	

Only members who selected an area of work are included on this report. Other members may not have responded to this question and are excluded from the count.

Areas of Work



(Blanks indicate no response)

Statistics on Areas of Interest (Members paid through >= 7/31/2016)

<u>CODE</u>	<u>DESCRIPTION</u>	<u>TOTAL*</u>	<u>% of TOTAL*</u>
TE	Teacher education	1,524	5%
CURRICULUM	Materials development/Curriculum	1,465	4%
EFL	English as a foreign language	1,407	4%
SLA	Second language acquisition	1,390	4%
AL	Applied linguistics	1,342	4%
HE	Higher education	1,308	4%
WRITING	Writing/composition	1,273	4%
IC	Multiculturalism/intercultural communications	1,256	4%
CALL	Technology in education	1,237	4%
IEP	Intensive English programs	1,217	4%
AE	Adult education	1,183	4%
PROFDEV	Professional development	1,135	3%
CONTENT	Content-based instruction	1,102	3%
SP	Speaking/pronunciation	1,043	3%
READING	Reading/literacy	1,016	3%
GRAMMAR	Grammar	979	3%
ASSESS	Assessment/testing	944	3%
ESP	English for specific purposes	901	3%
RS	Research	867	3%
PA	Program administration	698	2%
DISTANCE	Distance learning/Online Education	687	2%
VOCAB	Vocabulary/Lexicon	684	2%
BE	Bilingual education	639	2%
SOCIAL	Social/global/political concerns	583	2%
ISKILL	Integrated Skills	564	2%
LISTEN	Listening	564	2%
WORKPLACE	Workplace English instruction/Business English	537	2%
VI	Video and digital media	529	2%
EE	Elementary/primary education	505	2%
SS	Secondary education	496	1%
COMMCOLL	Community college/technical ed	449	1%
LINGUISTICS	Theoretical Linguistics	379	1%
RC	Refugee concerns	378	1%
STANDARDS	Standards	362	1%
ITA	International teaching assistants	343	1%
LIT	Literature	340	1%
FAMILY	Community/family outreach	281	1%
NNES	NNES/NES issues	272	1%
EMPLOYMENT	Employment issues/Certification	270	1%
PUBLICPOLICY	Public policy	236	1%
LDSN	Learning Disorders/Special Needs	228	1%
ACCRED	Accreditation	219	1%
MAINSTREAMING	Mainstreaming	195	1%
ARTS	Arts/Media/Science/Math/Social Science	153	0%
STYLISTICS	Stylistics	62	0%

Sorted in order of prevalence.

** Note: Members are encouraged to choose multiple areas of interest and some members do not choose any areas of interest. The total number of distinct members (4,167) represented in this report is less than the total number of active members as indicated elsewhere in this report.*

Areas of interest are separate from official TESOL interest sections. Areas of interest represent distinct areas in which a member may be interested, rather than official entities in which a member is involved.

Areas of interest which have a very low count may be recent additions to the AOI list, or may reflect overall trends in membership.

Statistics on Areas of Expertise (Members paid through >= 7/31/2016)

<u>CODE</u>	<u>DESCRIPTION</u>	<u>TOTAL*</u>	<u>% of TOTAL*</u>
EFL	English as a foreign language	916	6%
CURRICULUM	Materials development/Curriculum	815	5%
AE	Adult education	777	5%
WRITING	Writing/composition	761	5%
IEP	Intensive English programs	746	5%
TE	Teacher education	729	5%
AL	Applied linguistics	697	4%
HE	Higher education	684	4%
SLA	Second language acquisition	603	4%
CONTENT	Content-based instruction	569	4%
GRAMMAR	Grammar	553	4%
IC	Multiculturalism/intercultural communications	479	3%
CALL	Technology in education	477	3%
PROFDEV	Professional development	462	3%
ESP	English for specific purposes	442	3%
SP	Speaking/pronunciation	439	3%
READING	Reading/literacy	432	3%
PA	Program administration	399	3%
ASSESS	Assessment/testing	382	2%
EE	Elementary/primary education	339	2%
ISKILL	Integrated Skills	311	2%
DISTANCE	Distance learning/Online Education	294	2%
COMMCOLL	Community college/technical ed	276	2%
RS	Research	264	2%
SS	Secondary education	263	2%
BE	Bilingual education	246	2%
WORKPLACE	Workplace English instruction/Business English	234	2%
LISTEN	Listening	229	1%
VOCAB	Vocabulary/Lexicon	207	1%
LIT	Literature	177	1%
VI	Video and digital media	146	1%
SOCIAL	Social/global/political concerns	141	1%
ITA	International teaching assistants	124	1%
NNES	NNES/NES issues	124	1%
ACCRED	Accreditation	120	1%
LINGUISTICS	Theoretical Linguistics	88	1%
MAINSTREAMING	Mainstreaming	88	1%
STANDARDS	Standards	87	1%
RC	Refugee concerns	83	1%
FAMILY	Community/family outreach	81	1%
ARTS	Arts/Media/Science/Math/Social Science	78	1%
LDSN	Learning Disorders/Special Needs	71	0%
EMPLOYMENT	Employment issues/Certification	67	0%
PUBLICPOLICY	Public policy	47	0%
STYLISTICS	Stylistics	15	0%

Sorted in order of prevalence.

** Note: Members are encouraged to choose multiple areas of expertise and some members do not choose any areas of expertise. The total number of distinct members (3,377) represented in this report is less than the total number of active members as indicated elsewhere in this report.*

Areas of Expertise are separate from official TESOL interest sections or Areas of Interest. Areas of expertise represent distinct areas in which a member may be experienced in, rather than official entities in which a member is involved.

Areas of interest which have a very low count may be recent additions to the AOI list, or may reflect overall trends in membership.