

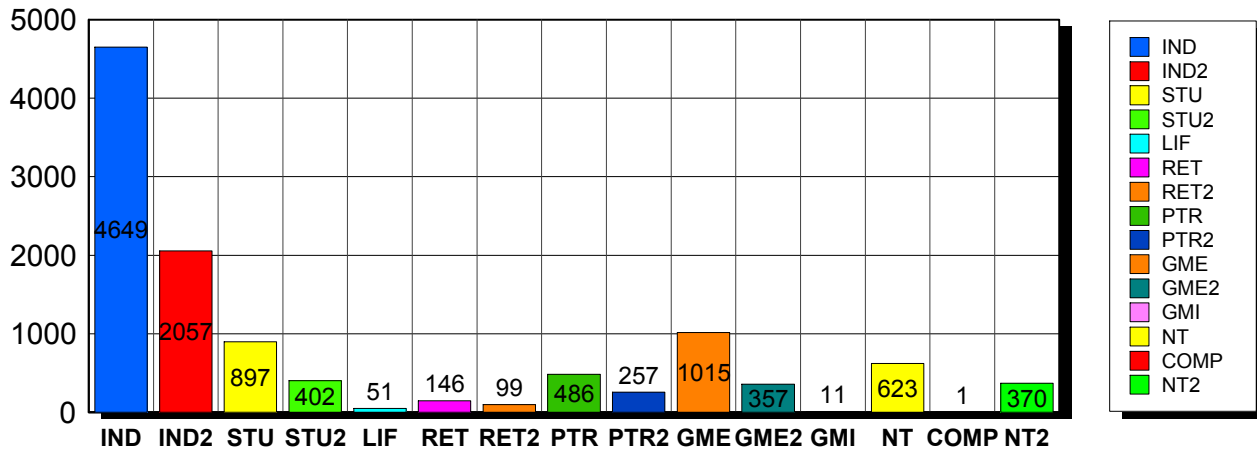
4/18/2016

**Membership Statistics: Grand totals for basic membership, by member type and country**

		<u># Memberships</u>	<u># Members</u>
<b>IND</b>	<b>BASIC</b>		
	Existing Member(s)	4,427	4,427
	New as of 3/1/2016 or later	222	222
<b>IND</b>	<b>BASIC</b>	<b>4,649</b>	<b>4,649</b>
-----			
<b>IND2</b>	<b>BASIC</b>		
	Existing Member(s)	2,037	2,037
	New as of 3/1/2016 or later	20	20
<b>IND2</b>	<b>BASIC</b>	<b>2,057</b>	<b>2,057</b>
-----			
<b>STU</b>	<b>BASIC</b>		
	Existing Member(s)	775	775
	New as of 3/1/2016 or later	122	122
<b>STU</b>	<b>BASIC</b>	<b>897</b>	<b>897</b>
-----			
<b>STU2</b>	<b>BASIC</b>		
	Existing Member(s)	395	395
	New as of 3/1/2016 or later	7	7
<b>STU2</b>	<b>BASIC</b>	<b>402</b>	<b>402</b>
-----			
<b>LIF</b>	<b>BASIC</b>		
	Existing Member(s)	51	51
<b>LIF</b>	<b>BASIC</b>	<b>51</b>	<b>51</b>
-----			
<b>RET</b>	<b>BASIC</b>		
	Existing Member(s)	146	146
<b>RET</b>	<b>BASIC</b>	<b>146</b>	<b>146</b>
-----			
<b>RET2</b>	<b>BASIC</b>		
	Existing Member(s)	99	99
<b>RET2</b>	<b>BASIC</b>	<b>99</b>	<b>99</b>
-----			
<b>PTR</b>	<b>BASIC</b>		
	Existing Member(s)	463	463
	New as of 3/1/2016 or later	23	23
<b>PTR</b>	<b>BASIC</b>	<b>486</b>	<b>486</b>
-----			
<b>PTR2</b>	<b>BASIC</b>		
	Existing Member(s)	254	254
	New as of 3/1/2016 or later	3	3
<b>PTR2</b>	<b>BASIC</b>	<b>257</b>	<b>257</b>
-----			
<b>GME</b>	<b>BASIC</b>		
	Existing Member(s)	931	931
	New as of 3/1/2016 or later	84	84
<b>GME</b>	<b>BASIC</b>	<b>1,015</b>	<b>1,015</b>
-----			
<b>GME2</b>	<b>BASIC</b>		
	Existing Member(s)	354	354
	New as of 3/1/2016 or later	3	3
<b>GME2</b>	<b>BASIC</b>	<b>357</b>	<b>357</b>
-----			
<b>GMI</b>	<b>BASIC</b>		

	Existing Member(s)	11	11
<b>GMI</b>	<b>BASIC</b>	<b>11</b>	<b>11</b>
<hr/>			
<b>NT</b>	<b>BASIC</b>		
	Existing Member(s)	575	575
	New as of 3/1/2016 or later	48	48
<b>NT</b>	<b>BASIC</b>	<b>623</b>	<b>623</b>
<hr/>			
<b>COMP</b>	<b>BASIC</b>		
	Existing Member(s)	1	1
<b>COMP</b>	<b>BASIC</b>	<b>1</b>	<b>1</b>
<hr/>			
<b>NT2</b>	<b>BASIC</b>		
	Existing Member(s)	360	360
	New as of 3/1/2016 or later	10	10
<b>NT2</b>	<b>BASIC</b>	<b>370</b>	<b>370</b>
<hr/>			
<b>Grand Total:</b>		<b>11,421</b>	<b>11,421</b>

## Member Types



Note: in all general statistic reports, joint household memberships are treated as "one" member EXCEPT in the second column of this report, where joints are counted as two people, providing the most accurate count of the number of TESOL members.

		Existing Member(s)	New as of 3/1/2016 or later	Total
COMP	United States	1	0	1
	<b>Total</b>	<b>1</b>	<b>0</b>	<b>1</b>
GME	United States	29	12	41
	ALBANIA	2	0	2
	ALGERIA	4	0	4
	ARGENTINA	21	0	21
	ARMENIA	1	0	1

		Existing Member(s)	New as of 3/1/2016 or later	Total
GME	AZERBAIJAN	6	0	6
	BAHRAIN	1	0	1
	BANGLADESH	33	0	33
	BELIZE	2	0	2
	BOLIVIA	16	1	17
	BOSNIA AND	1	0	1
	BRAZIL	53	1	54
	BULGARIA	3	0	3
	CAMBODIA	4	0	4
	CAMEROON	2	0	2
	CHILE	7	0	7
	CHINA	94	6	100
	COLOMBIA	11	1	12
	COSTA RICA	13	0	13
	CROATIA	5	0	5
	DOMINICAN	6	1	7
	ECUADOR	87	6	93
	EGYPT	16	6	22
	EL SALVADOR	1	0	1
	GEORGIA	3	1	4
	GUATEMALA	9	0	9
	HAITI	10	1	11
	HONDURAS	5	0	5
	HONG KONG	1	0	1
	HONG KONG	1	0	1
	HUNGARY	2	1	3
	INDIA	52	16	68
	INDONESIA	4	0	4
	IRAN	3	0	3
	IRAQ	3	0	3
ISRAEL	0	1	1	

		Existing Member(s)	New as of 3/1/2016 or later	Total
GME	JAMAICA	2	0	2
	JAPAN	1	0	1
	JORDAN	1	0	1
	KAZAKHSTAN	1	0	1
	KYRGYZSTAN	1	0	1
	LATVIA	1	0	1
	LEBANON	6	0	6
	MACEDONIA	1	0	1
	MADAGASCAR	2	0	2
	MALAYSIA	13	0	13
	MALI	1	0	1
	MAURITANIA	3	0	3
	MEXICO	46	1	47
	MOLDOVA,	2	0	2
	MONGOLIA	3	1	4
	MOROCCO	30	1	31
	MYANMAR	1	0	1
	NEPAL	12	0	12
	NEW ZEALAND	1	0	1
	NICARAGUA	2	1	3
	NIGERIA	7	0	7
	NORWAY	1	0	1
	PAKISTAN	21	2	23
	PALESTINIAN	3	0	3
	PANAMA	20	0	20
	PARAGUAY	3	0	3
	PEOPLES REP	23	0	23
PERU	89	6	95	
PHILIPPINES	11	3	14	
POLAND	4	0	4	
ROMANIA	2	0	2	

		Existing Member(s)	New as of 3/1/2016 or later	Total
GME	RUSSIA	4	0	4
	RUSSIAN	10	0	10
	RWANDA	2	0	2
	SAUDI ARABIA	1	0	1
	SERBIA	5	0	5
	SLOVAKIA	1	0	1
	SOUTH AFRICA	1	0	1
	SRI LANKA	1	3	4
	SUDAN	1	0	1
	SWAZILAND	1	0	1
	SYRIAN ARAB	1	0	1
	TAIWAN ROC	2	0	2
	THAILAND	12	0	12
	TUNISIA	2	1	3
	TURKEY	20	2	22
	UKRAINE	9	1	10
	UNITED	1	0	1
	URUGUAY	6	0	6
	VENEZUELA	18	8	26
	VIET NAM	1	0	1
VIETNAM	6	0	6	
YEMEN	1	0	1	
	<b>Total</b>	<b>931</b>	<b>84</b>	<b>1,015</b>
GME2	United States	9	0	9
	AFGHANISTAN	1	0	1
	ALBANIA	2	0	2
	ANGOLA	1	0	1
	ARGENTINA	3	0	3
	ARMENIA	1	0	1
	BANGLADESH	2	0	2
	BELARUS	1	0	1

		Existing Member(s)	New as of 3/1/2016 or later	Total
GME2	BOLIVIA	4	0	4
	BRAZIL	19	0	19
	BULGARIA	4	0	4
	BURKINA FASO	1	0	1
	CAMEROON	1	0	1
	CHILE	7	0	7
	CHINA	52	0	52
	COLOMBIA	9	0	9
	COSTA RICA	5	0	5
	DOMINICAN	9	0	9
	ECUADOR	15	0	15
	EGYPT	3	0	3
	GABON	2	0	2
	GEORGIA	1	0	1
	GRENADA	2	0	2
	GUATEMALA	1	0	1
	HONDURAS	1	0	1
	INDIA	22	0	22
	INDONESIA	5	0	5
	IRAQ	1	0	1
	JORDAN	3	0	3
	KAZAKHSTAN	5	0	5
	LATVIA	2	0	2
	LEBANON	2	0	2
	LITHUANIA	1	0	1
	MADAGASCAR	1	0	1
	MALAYSIA	6	0	6
	MAURITIUS	1	0	1
	MEXICO	20	0	20
	MONGOLIA	6	0	6
MOROCCO	3	0	3	

		Existing Member(s)	New as of 3/1/2016 or later	Total
GME2	MOZAMBIQUE	1	0	1
	NAMIBIA	1	0	1
	NEPAL	3	0	3
	NIGER	1	0	1
	NIGERIA	5	0	5
	PAKISTAN	4	0	4
	PANAMA	2	0	2
	PARAGUAY	1	0	1
	PEOPLES REP	1	0	1
	PERU	7	0	7
	PHILIPPINES	8	0	8
	POLAND	5	1	6
	RUSSIA	3	1	4
	RUSSIAN	6	0	6
	SENEGAL	1	0	1
	SIERRA LEONE	1	0	1
	SRI LANKA	2	0	2
	SURINAME	1	0	1
	TAIWAN ROC	2	0	2
	TAJIKISTAN	2	0	2
	THAILAND	13	1	14
	TUNISIA	3	0	3
	TURKEY	18	0	18
	URUGUAY	2	0	2
	UZBEKISTAN	19	0	19
	VENEZUELA	2	0	2
VIET NAM	1	0	1	
VIETNAM	4	0	4	
YEMEN	1	0	1	
<b>Total</b>	<b>354</b>	<b>3</b>	<b>357</b>	
GMI	BELARUS	1	0	1

		Existing Member(s)	New as of 3/1/2016 or later	Total
GMI	BRAZIL	2	0	2
	CHINA	2	0	2
	HUNGARY	1	0	1
	KOSOVO	1	0	1
	MEXICO	1	0	1
	PERU	3	0	3
	<b>Total</b>	11	0	11
IND	United States	3,885	195	4,080
	02453-2728	1	0	1
	ARGENTINA	0	1	1
	AUSTRALIA	16	1	17
	AUSTRIA	0	1	1
	BAHRAIN	1	0	1
	BERMUDA	1	0	1
	BRAZIL	2	1	3
	CANADA	124	4	128
	CHILE	2	0	2
	CHINA	5	1	6
	COLOMBIA	2	0	2
	COSTA RICA	1	0	1
	CYPRUS	1	0	1
	CZECH	5	0	5
	DENMARK	3	0	3
	ECUADOR	5	8	13
	EGYPT	4	0	4
	FINLAND	1	0	1
	FRANCE	3	1	4
	GERMANY	5	0	5
	GREECE	1	0	1
	HONG KONG	3	1	4
	HONG KONG	1	0	1



		Existing Member(s)	New as of 3/1/2016 or later	Total
IND	HUNGARY	2	0	2
	INDIA	2	0	2
	IRAN	1	0	1
	IRELAND	1	0	1
	ISRAEL	4	0	4
	ITALY	5	0	5
	JAPAN	164	1	165
	JORDAN	3	0	3
	Korea, Republic	4	0	4
	KOREA,	1	0	1
	KOREA,	5	0	5
	KOSOVO	2	0	2
	KUWAIT	6	0	6
	LEBANON	1	0	1
	LIBYA	1	0	1
	MACAO	1	0	1
	MALAYSIA	1	0	1
	MEXICO	4	1	5
	NETHERLAND	3	0	3
	NEW ZEALAND	5	0	5
	NIGERIA	1	0	1
	NORWAY	5	0	5
	OMAN	4	1	5
	PAKISTAN	1	0	1
	PALESTINIAN	1	0	1
	PARAGUAY	1	0	1
	PEOPLES REP	2	0	2
	PERU	4	1	5
	PHILIPPINES	1	0	1
	PORTUGAL	1	0	1
Puerto Rico	10	0	10	

		Existing Member(s)	New as of 3/1/2016 or later	Total
IND	QATAR	9	0	9
	SAUDI ARABIA	15	0	15
	SINGAPORE	3	0	3
	SLOVAKIA	1	0	1
	SOUTH AFRICA	2	0	2
	SOUTH KOREA	8	0	8
	SPAIN	6	0	6
	SWEDEN	7	0	7
	SWITZERLAND	1	0	1
	TAIWAN	6	0	6
	TAIWAN ROC	3	0	3
	THAILAND	3	0	3
	TRINIDAD AND	1	0	1
	UGANDA	0	1	1
	UNITED ARAB	26	0	26
	UNITED	11	0	11
	UNITED	2	3	5
	URUGUAY	1	0	1
	VIET NAM	2	0	2
	VIETNAM	1	0	1
	<b>Total</b>	<b>4,427</b>	<b>222</b>	<b>4,649</b>
IND2	United States	1,681	19	1,700
	AUSTRALIA	18	0	18
	AUSTRIA	2	0	2
	BAHRAIN	1	0	1
	BENIN	1	0	1
	BRAZIL	3	0	3
	CANADA	102	0	102
	CAYMAN	1	0	1
	CHILE	1	0	1
	CHINA	6	0	6

		Existing Member(s)	New as of 3/1/2016 or later	Total
IND2	COLOMBIA	2	0	2
	COSTA RICA	1	0	1
	CYPRUS	1	0	1
	DENMARK	1	0	1
	FINLAND	1	0	1
	FRANCE	1	0	1
	GERMANY	6	0	6
	GREECE	1	0	1
	HONG KONG	3	0	3
	HONG KONG	8	0	8
	INDIA	2	0	2
	INDONESIA	0	1	1
	IRAQ	1	0	1
	ITALY	4	0	4
	JAPAN	89	0	89
	Korea, Republic	2	0	2
	KOREA,	3	0	3
	KUWAIT	3	0	3
	Lao People's	1	0	1
	LUXEMBOURG	1	0	1
	MACAO	4	0	4
	MALAYSIA	3	0	3
	MARTINIQUE	1	0	1
	NETHERLAND	1	0	1
	NEW	1	0	1
	NEW ZEALAND	3	0	3
	NICARAGUA	1	0	1
NIGERIA	1	0	1	
NORWAY	1	0	1	
OMAN	1	0	1	
QATAR	13	0	13	

		Existing Member(s)	New as of 3/1/2016 or later	Total
IND2	ROMANIA	1	0	1
	SAUDI ARABIA	9	0	9
	SERBIA	1	0	1
	SINGAPORE	3	0	3
	SLOVAKIA	2	0	2
	SOUTH KOREA	7	0	7
	SPAIN	1	0	1
	SWITZERLAND	2	0	2
	TAIWAN	6	0	6
	TAIWAN ROC	2	0	2
	THAILAND	2	0	2
	TRINIDAD AND	1	0	1
	TURKEY	2	0	2
	UKRAINE	2	0	2
	UNITED ARAB	9	0	9
	UNITED	5	0	5
	UNITED	2	0	2
	URUGUAY	2	0	2
	VENEZUELA	1	0	1
	<b>Total</b>	<b>2,037</b>	<b>20</b>	<b>2,057</b>
LIF	United States	42	0	42
	AUSTRALIA	1	0	1
	CANADA	2	0	2
	EGYPT	1	0	1
	ISRAEL	1	0	1
	JAPAN	1	0	1
	UNITED ARAB	1	0	1
	UNITED	2	0	2
	<b>Total</b>	<b>51</b>	<b>0</b>	<b>51</b>
NT	United States	519	39	558
	AUSTRALIA	3	0	3

		Existing Member(s)	New as of 3/1/2016 or later	Total
NT	AUSTRIA	1	0	1
	CANADA	10	2	12
	CHINA	2	0	2
	COLOMBIA	1	0	1
	ECUADOR	2	0	2
	GERMANY	1	0	1
	HONG KONG	1	0	1
	HONG KONG	1	0	1
	IRAQ	1	0	1
	ITALY	2	0	2
	JAPAN	13	0	13
	KUWAIT	1	0	1
	MARTINIQUE	1	0	1
	MATARA	1	0	1
	MEXICO	0	2	2
	NEW ZEALAND	1	0	1
	PERU	1	0	1
	QATAR	3	0	3
	RUSSIA	1	0	1
	RUSSIAN	1	0	1
	SAUDI ARABIA	1	0	1
	SINGAPORE	1	0	1
	SOUTH KOREA	2	1	3
	SPAIN	1	0	1
	THAILAND	1	0	1
	TURKEY	1	0	1
UNITED	1	0	1	
UNITED	0	4	4	
	<b>Total</b>	<b>575</b>	<b>48</b>	<b>623</b>
NT2	United States	329	9	338
	AUSTRALIA	4	0	4

		Existing Member(s)	New as of 3/1/2016 or later	Total
NT2	CANADA	9	1	10
	HONG KONG	1	0	1
	HUNGARY	1	0	1
	ITALY	1	0	1
	JAPAN	3	0	3
	KOREA,	1	0	1
	KUWAIT	1	0	1
	MACAO	1	0	1
	SAUDI ARABIA	2	0	2
	SINGAPORE	2	0	2
	SOUTH KOREA	1	0	1
	TAIWAN	2	0	2
	UNITED ARAB	1	0	1
	UNITED	1	0	1
	<b>Total</b>	<b>360</b>	<b>10</b>	<b>370</b>
PTR	United States	358	16	374
	AUSTRALIA	1	0	1
	BRAZIL	3	0	3
	CANADA	14	0	14
	CHILE	1	0	1
	CHINA	6	0	6
	COLOMBIA	3	0	3
	COSTA RICA	2	1	3
	DOMINICAN	2	0	2
	ECUADOR	8	2	10
	EGYPT	1	0	1
	FRANCE	1	0	1
	GERMANY	1	0	1
	GREECE	1	0	1
	HAITI	1	0	1
ICELAND	1	0	1	

		Existing Member(s)	New as of 3/1/2016 or later	Total
PTR	INDONESIA	2	0	2
	IRAQ	1	0	1
	JAPAN	11	0	11
	KUWAIT	1	0	1
	Lao People's	1	0	1
	LITHUANIA	1	0	1
	MACAO	1	0	1
	MEXICO	0	1	1
	MOROCCO	1	0	1
	NEW ZEALAND	1	0	1
	NICARAGUA	1	1	2
	NORTHERN	1	0	1
	PAKISTAN	1	0	1
	PEOPLES REP	1	0	1
	PERU	1	0	1
	PHILIPPINES	1	0	1
	POLAND	1	0	1
	Puerto Rico	5	1	6
	SAUDI ARABIA	1	0	1
	SINGAPORE	1	0	1
	SLOVENIA	1	0	1
	SOUTH AFRICA	1	0	1
	SOUTH KOREA	1	0	1
	SPAIN	2	0	2
	TAIWAN	1	0	1
	TANZANIA,	4	0	4
	THAILAND	1	1	2
	TURKEY	5	0	5
	UNITED ARAB	4	0	4
	UNITED	4	0	4
VENEZUELA	1	0	1	

		Existing Member(s)	New as of 3/1/2016 or later	Total
PTR	<b>Total</b>	<b>463</b>	<b>23</b>	<b>486</b>
PTR2	United States	<b>204</b>	<b>3</b>	<b>207</b>
	BRAZIL	<b>2</b>	<b>0</b>	<b>2</b>
	CANADA	<b>11</b>	<b>0</b>	<b>11</b>
	CHILE	<b>1</b>	<b>0</b>	<b>1</b>
	CHINA	<b>3</b>	<b>0</b>	<b>3</b>
	COLOMBIA	<b>1</b>	<b>0</b>	<b>1</b>
	CZECH	<b>1</b>	<b>0</b>	<b>1</b>
	GERMANY	<b>1</b>	<b>0</b>	<b>1</b>
	HONG KONG	<b>1</b>	<b>0</b>	<b>1</b>
	INDONESIA	<b>1</b>	<b>0</b>	<b>1</b>
	ISRAEL	<b>1</b>	<b>0</b>	<b>1</b>
	ITALY	<b>1</b>	<b>0</b>	<b>1</b>
	JAPAN	<b>2</b>	<b>0</b>	<b>2</b>
	MACAO	<b>1</b>	<b>0</b>	<b>1</b>
	MEXICO	<b>1</b>	<b>0</b>	<b>1</b>
	PHILIPPINES	<b>1</b>	<b>0</b>	<b>1</b>
	POLAND	<b>1</b>	<b>0</b>	<b>1</b>
	SAUDI ARABIA	<b>8</b>	<b>0</b>	<b>8</b>
	TAIWAN	<b>5</b>	<b>0</b>	<b>5</b>
	THAILAND	<b>1</b>	<b>0</b>	<b>1</b>
	TURKEY	<b>5</b>	<b>0</b>	<b>5</b>
UNITED ARAB	<b>1</b>	<b>0</b>	<b>1</b>	
	<b>Total</b>	<b>254</b>	<b>3</b>	<b>257</b>
RET	United States	<b>132</b>	<b>0</b>	<b>132</b>
	BRAZIL	<b>1</b>	<b>0</b>	<b>1</b>
	CANADA	<b>4</b>	<b>0</b>	<b>4</b>
	COLOMBIA	<b>1</b>	<b>0</b>	<b>1</b>
	GERMANY	<b>1</b>	<b>0</b>	<b>1</b>
	ISRAEL	<b>1</b>	<b>0</b>	<b>1</b>
	JAPAN	<b>3</b>	<b>0</b>	<b>3</b>



		Existing Member(s)	New as of 3/1/2016 or later	Total
RET	MEXICO	1	0	1
	PORTUGAL	1	0	1
	SRI LANKA	1	0	1
	<b>Total</b>	<b>146</b>	<b>0</b>	<b>146</b>
RET2	United States	84	0	84
	AUSTRALIA	1	0	1
	CANADA	1	0	1
	GERMANY	1	0	1
	ISRAEL	3	0	3
	JAPAN	4	0	4
	OMAN	1	0	1
	SOUTH KOREA	1	0	1
	SPAIN	1	0	1
	UNITED	2	0	2
	<b>Total</b>	<b>99</b>	<b>0</b>	<b>99</b>
STU	United States	685	107	792
	AUSTRALIA	9	1	10
	BELGIUM	1	0	1
	BRAZIL	1	0	1
	CANADA	22	2	24
	CHINA	4	0	4
	COLOMBIA	0	1	1
	ECUADOR	0	1	1
	GERMANY	3	0	3
	GHANA	1	0	1
	HAITI	1	0	1
	HONG KONG	2	0	2
	HONG KONG	3	0	3
	INDONESIA	1	0	1
	JAPAN	7	0	7
	Korea, Republic	1	0	1

		Existing Member(s)	New as of 3/1/2016 or later	Total
STU	MALAYSIA	1	0	1
	MEXICO	2	5	7
	NEW ZEALAND	2	0	2
	PHILIPPINES	2	0	2
	POLAND	1	0	1
	RUSSIAN	2	0	2
	SAUDI ARABIA	2	1	3
	SOUTH AFRICA	1	0	1
	SOUTH KOREA	1	0	1
	TAIWAN	1	0	1
	THAILAND	2	1	3
	TURKEY	9	1	10
	UNITED ARAB	0	1	1
	UNITED	8	0	8
	UNITED	0	1	1
	<b>Total</b>	<b>775</b>	<b>122</b>	<b>897</b>
STU2	United States	346	7	353
	ALBANIA	2	0	2
	AUSTRALIA	4	0	4
	BRAZIL	2	0	2
	CAMEROON	2	0	2
	CANADA	17	0	17
	CHINA	1	0	1
	FRANCE	1	0	1
	GERMANY	1	0	1
	HONG KONG	2	0	2
	HONG KONG	1	0	1
	INDONESIA	1	0	1
	ISRAEL	1	0	1
	JAPAN	2	0	2
	Korea, Republic	1	0	1

		Existing Member(s)	New as of 3/1/2016 or later	Total
STU2	KOREA,	1	0	1
	LEBANON	1	0	1
	MEXICO	1	0	1
	NEPAL	1	0	1
	OMAN	1	0	1
	Puerto Rico	1	0	1
	SINGAPORE	1	0	1
	TAIWAN ROC	1	0	1
	UNITED	3	0	3
	<b>Total</b>	<b>395</b>	<b>7</b>	<b>402</b>
<b>Total</b>		<b>10,879</b>	<b>542</b>	<b>11,421</b>

This report is based on members paid through 3/31/2016 or later.

Country/State/Province	Total	
02453-2728	1	0.0%
AFGHANISTAN	1	0.0%
ALBANIA	6	0.1%
ALGERIA	4	0.0%
ANGOLA	1	0.0%
ARGENTINA	25	0.2%
ARMENIA	2	0.0%
AUSTRALIA	59	0.5%
AUSTRIA	4	0.0%
AZERBAIJAN	6	0.1%
BAHRAIN	3	0.0%
BANGLADESH	35	0.3%
BELARUS	2	0.0%
BELGIUM	1	0.0%
BELIZE	2	0.0%
BENIN	1	0.0%
BERMUDA	1	0.0%
BOLIVIA	21	0.2%
BOSNIA AND HERZEGOVINA	1	0.0%
BRAZIL	90	0.8%
BULGARIA	7	0.1%
BURKINA FASO	1	0.0%
CAMBODIA	4	0.0%
CAMEROON	5	0.0%
CANADA		
CANADA	4	
CANADA	27	
CANADA	81	
CANADA	11	
CANADA	1	
CANADA	9	
CANADA	1	
CANADA	10	
CANADA	138	
CANADA	29	
CANADA	14	
CANADA	325	2.8%
CAYMAN ISLANDS	1	0.0%
CHILE	19	0.2%
CHINA	182	1.6%
COLOMBIA	32	0.3%
COSTA RICA	23	0.2%
CROATIA	5	0.0%
CYPRUS	2	0.0%
CZECH REPUBLIC	6	0.1%
DENMARK	4	0.0%
DOMINICAN REPUBLIC	18	0.2%
ECUADOR	134	1.2%
EGYPT	31	0.3%
EL SALVADOR	1	0.0%
FINLAND	2	0.0%
FRANCE	7	0.1%
GABON	2	0.0%
GEORGIA	5	0.0%
GERMANY	20	0.2%
GHANA	1	0.0%
GREECE	3	0.0%

GRENADA	2	0.0%
GUATEMALA	10	0.1%
HAITI	13	0.1%
HONDURAS	6	0.1%
HONG KONG	14	0.1%
HONG KONG SAR CHINA	16	0.1%
HUNGARY	7	0.1%
ICELAND	1	0.0%
INDIA	94	0.8%
INDONESIA	15	0.1%
IRAN	4	0.0%
IRAQ	7	0.1%
IRELAND	1	0.0%
ISRAEL	12	0.1%
ITALY	13	0.1%
JAMAICA	2	0.0%
JAPAN	301	2.6%
JORDAN	7	0.1%
KAZAKHSTAN	6	0.1%
Korea, Republic Of	8	0.1%
KOREA, REPUBLIC OF	1	0.0%
KOREA, REPUBLIC OF	10	0.1%
KOSOVO (UNMIK)	4	0.0%
KUWAIT	12	0.1%
KYRGYZSTAN	1	0.0%
Lao People's Dem Republic	2	0.0%
LATVIA	3	0.0%
LEBANON	10	0.1%
LIBYA	1	0.0%
LITHUANIA	2	0.0%
LUXEMBOURG	1	0.0%
MACAO	8	0.1%
MACEDONIA	1	0.0%
MADAGASCAR	3	0.0%
MALAYSIA	24	0.2%
MALI	1	0.0%
MARTINIQUE	2	0.0%
MATARA	1	0.0%
MAURITANIA	3	0.0%
MAURITIUS	1	0.0%
MEXICO	86	0.8%
MOLDOVA, REPUBLIC OF	2	0.0%
MONGOLIA	10	0.1%
MOROCCO	35	0.3%
MOZAMBIQUE	1	0.0%
MYANMAR	1	0.0%
NAMIBIA	1	0.0%
NEPAL	16	0.1%
NETHERLANDS	4	0.0%
NEW CALEDONIA	1	0.0%
NEW ZEALAND	13	0.1%
NICARAGUA	6	0.1%
NIGER	1	0.0%
NIGERIA	14	0.1%
NORTHERN MARIANA ISLANDS	1	0.0%
NORWAY	7	0.1%
OMAN	8	0.1%
PAKISTAN	29	0.3%
PALESTINIAN TERRITORY	4	0.0%
PANAMA	22	0.2%
PARAGUAY	5	0.0%

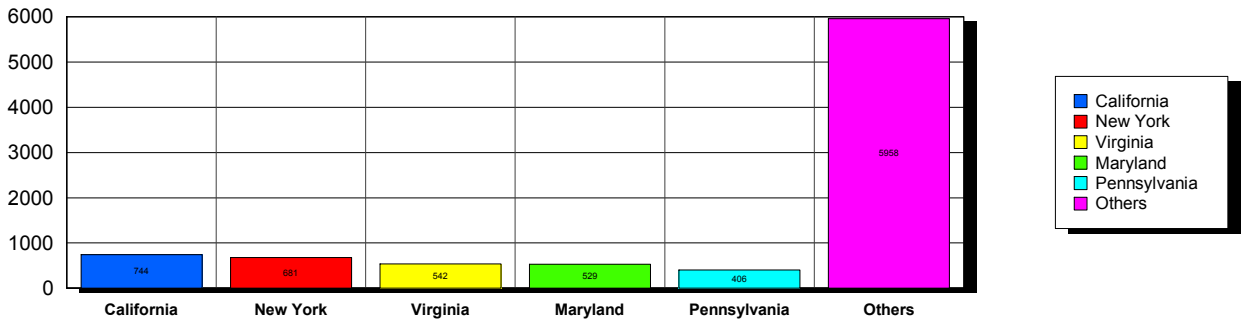
<b>PEOPLES REP OF CHINA</b>		<b>27</b>	<b>0.2%</b>
<b>PERU</b>		<b>113</b>	<b>1.0%</b>
<b>PHILIPPINES</b>		<b>27</b>	<b>0.2%</b>
<b>POLAND</b>		<b>13</b>	<b>0.1%</b>
<b>PORTUGAL</b>		<b>2</b>	<b>0.0%</b>
<b>Puerto Rico</b>		<b>17</b>	<b>0.1%</b>
<b>QATAR</b>		<b>25</b>	<b>0.2%</b>
<b>ROMANIA</b>		<b>3</b>	<b>0.0%</b>
<b>RUSSIA</b>		<b>9</b>	<b>0.1%</b>
<b>RUSSIAN FEDERATION</b>		<b>19</b>	<b>0.2%</b>
<b>RWANDA</b>		<b>2</b>	<b>0.0%</b>
<b>SAUDI ARABIA</b>		<b>40</b>	<b>0.4%</b>
<b>SENEGAL</b>		<b>1</b>	<b>0.0%</b>
<b>SERBIA</b>		<b>6</b>	<b>0.1%</b>
<b>SIERRA LEONE</b>		<b>1</b>	<b>0.0%</b>
<b>SINGAPORE</b>		<b>11</b>	<b>0.1%</b>
<b>SLOVAKIA</b>		<b>4</b>	<b>0.0%</b>
<b>SLOVENIA</b>		<b>1</b>	<b>0.0%</b>
<b>SOUTH AFRICA</b>		<b>5</b>	<b>0.0%</b>
<b>SOUTH KOREA</b>		<b>22</b>	<b>0.2%</b>
<b>SPAIN</b>		<b>11</b>	<b>0.1%</b>
<b>SRI LANKA</b>		<b>7</b>	<b>0.1%</b>
<b>SUDAN</b>		<b>1</b>	<b>0.0%</b>
<b>SURINAME</b>		<b>1</b>	<b>0.0%</b>
<b>SWAZILAND</b>		<b>1</b>	<b>0.0%</b>
<b>SWEDEN</b>		<b>7</b>	<b>0.1%</b>
<b>SWITZERLAND</b>		<b>3</b>	<b>0.0%</b>
<b>SYRIAN ARAB REPUBLIC</b>		<b>1</b>	<b>0.0%</b>
<b>TAIWAN</b>		<b>21</b>	<b>0.2%</b>
<b>TAIWAN ROC</b>		<b>10</b>	<b>0.1%</b>
<b>TAJKISTAN</b>		<b>2</b>	<b>0.0%</b>
<b>TANZANIA, UNITED REPUBLIC</b>		<b>4</b>	<b>0.0%</b>
<b>THAILAND</b>		<b>38</b>	<b>0.3%</b>
<b>TRINIDAD AND TOBAGO</b>		<b>2</b>	<b>0.0%</b>
<b>TUNISIA</b>		<b>6</b>	<b>0.1%</b>
<b>TURKEY</b>		<b>63</b>	<b>0.6%</b>
<b>UGANDA</b>		<b>1</b>	<b>0.0%</b>
<b>UKRAINE</b>		<b>12</b>	<b>0.1%</b>
<b>UNITED ARAB EMIRATES</b>		<b>43</b>	<b>0.4%</b>
<b>UNITED KINGDOM</b>		<b>38</b>	<b>0.3%</b>
<b>UNITED STATES OF AMERICA</b>		<b>12</b>	<b>0.1%</b>
<b>URUGUAY</b>		<b>11</b>	<b>0.1%</b>
<b>USA</b>			
<i>USA</i>		<i>51</i>	
<i>USA</i>	<i>Alabama</i>	<i>90</i>	
<i>USA</i>	<i>Alaska</i>	<i>13</i>	
<i>USA</i>	<i>American Embassy</i>	<i>11</i>	
<i>USA</i>	<i>Arizona</i>	<i>164</i>	
<i>USA</i>	<i>Arkansas</i>	<i>58</i>	
<i>USA</i>	<i>Armed Forces</i>	<i>8</i>	
<i>USA</i>	<i>Armed Frces Americas</i>	<i>2</i>	
<i>USA</i>	<i>British Columbia</i>	<i>2</i>	
<i>USA</i>	<i>California</i>	<i>734</i>	
<i>USA</i>	<i>Colorado</i>	<i>140</i>	
<i>USA</i>	<i>Connecticut</i>	<i>133</i>	
<i>USA</i>	<i>Delaware</i>	<i>90</i>	
<i>USA</i>	<i>District of Columbia</i>	<i>193</i>	
<i>USA</i>	<i>Florida</i>	<i>338</i>	
<i>USA</i>	<i>Georgia</i>	<i>163</i>	
<i>USA</i>	<i>Guam</i>	<i>1</i>	
<i>USA</i>	<i>Hawaii</i>	<i>55</i>	

<i>USA</i>	<i>Idaho</i>	<i>47</i>	
<i>USA</i>	<i>Illinois</i>	<i>311</i>	
<i>USA</i>	<i>Indiana</i>	<i>162</i>	
<i>USA</i>	<i>Iowa</i>	<i>96</i>	
<i>USA</i>	<i>Kansas</i>	<i>141</i>	
<i>USA</i>	<i>Kentucky</i>	<i>84</i>	
<i>USA</i>	<i>Louisiana</i>	<i>42</i>	
<i>USA</i>	<i>Maine</i>	<i>52</i>	
<i>USA</i>	<i>Maryland</i>	<i>517</i>	
<i>USA</i>	<i>Massachusetts</i>	<i>324</i>	
<i>USA</i>	<i>Michigan</i>	<i>255</i>	
<i>USA</i>	<i>Minnesota</i>	<i>130</i>	
<i>USA</i>	<i>Mississippi</i>	<i>61</i>	
<i>USA</i>	<i>Missouri</i>	<i>196</i>	
<i>USA</i>	<i>Montana</i>	<i>12</i>	
<i>USA</i>	<i>Nebraska</i>	<i>56</i>	
<i>USA</i>	<i>Nevada</i>	<i>42</i>	
<i>USA</i>	<i>New Hampshire</i>	<i>56</i>	
<i>USA</i>	<i>New Jersey</i>	<i>261</i>	
<i>USA</i>	<i>New Mexico</i>	<i>47</i>	
<i>USA</i>	<i>New York</i>	<i>672</i>	
<i>USA</i>	<i>North Carolina</i>	<i>173</i>	
<i>USA</i>	<i>North Dakota</i>	<i>18</i>	
<i>USA</i>	<i>Ohio</i>	<i>281</i>	
<i>USA</i>	<i>Oklahoma</i>	<i>54</i>	
<i>USA</i>	<i>Ontario</i>	<i>1</i>	
<i>USA</i>	<i>Oregon</i>	<i>195</i>	
<i>USA</i>	<i>Pennsylvania</i>	<i>402</i>	
<i>USA</i>	<i>Puerto Rico</i>	<i>20</i>	
<i>USA</i>	<i>Rhode Island</i>	<i>53</i>	
<i>USA</i>	<i>South Carolina</i>	<i>54</i>	
<i>USA</i>	<i>South Dakota</i>	<i>13</i>	
<i>USA</i>	<i>Tennessee</i>	<i>112</i>	
<i>USA</i>	<i>Texas</i>	<i>398</i>	
<i>USA</i>	<i>Utah</i>	<i>86</i>	
<i>USA</i>	<i>Vermont</i>	<i>64</i>	
<i>USA</i>	<i>Virginia</i>	<i>534</i>	
<i>USA</i>	<i>Washington</i>	<i>267</i>	
<i>USA</i>	<i>West Virginia</i>	<i>39</i>	
<i>USA</i>	<i>Wisconsin</i>	<i>130</i>	
<i>USA</i>	<i>Wyoming</i>	<i>10</i>	
<b>USA</b>		<b>8,714</b>	<b>76.3%</b>
<b>UZBEKISTAN</b>		<b>19</b>	<b>0.2%</b>
<b>VENEZUELA</b>		<b>30</b>	<b>0.3%</b>
<b>VIET NAM</b>		<b>4</b>	<b>0.0%</b>
<b>VIETNAM</b>		<b>11</b>	<b>0.1%</b>
<b>YEMEN</b>		<b>2</b>	<b>0.0%</b>
<b>Grand Total:</b>		<b>11,426</b>	

154 distinct countries represented.

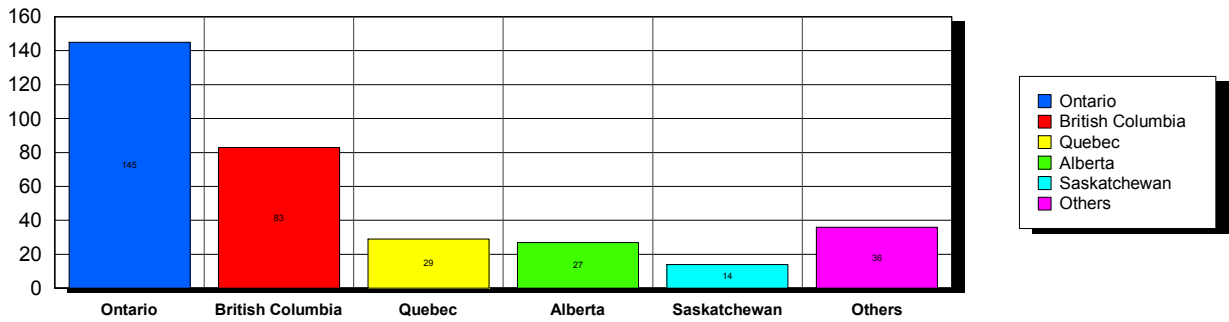
USA

Top 5 States per Country

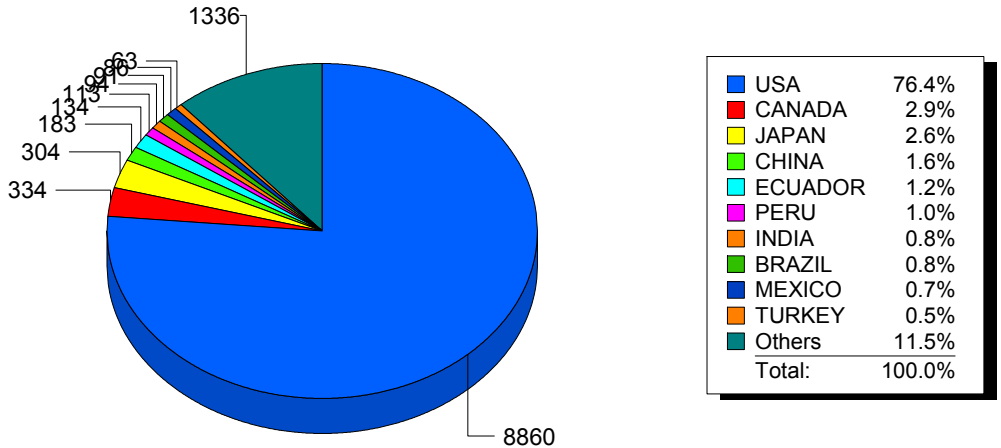


CANADA

Top 5 States per Country



Top 10 Countries





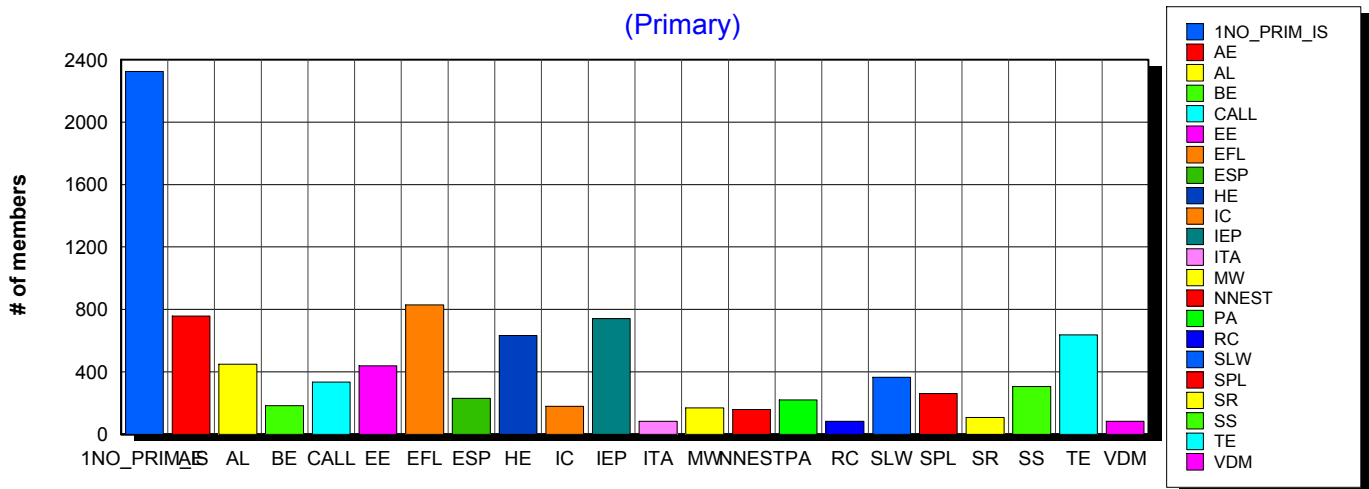
4/18/2016 **Basic statistics on Primary vs. other memberships in interest sections. For members paid through 3/31/2016 or later.**

			<i>Primary versus other</i>	
No Primary Interest Section	7.3%	<b>2,339</b>	2,325	14
Adult Education	6.2%	<b>1,983</b>	758	1,225
Applied Linguistics	5.8%	<b>1,841</b>	448	1,393
Bilingual Education	3.1%	<b>984</b>	184	800
Computer-Assisted Language Learning	5.1%	<b>1,615</b>	334	1,281
Elementary Education	3.2%	<b>1,023</b>	438	585
English as a Foreign Language	6.9%	<b>2,195</b>	829	1,366
English for Specific Purposes	4.4%	<b>1,412</b>	231	1,181
Higher Education	6.2%	<b>1,984</b>	633	1,351
Intercultural Communication	4.8%	<b>1,531</b>	179	1,352
Intensive English Programs	6.2%	<b>1,979</b>	740	1,239
International Teaching Assistants	1.9%	<b>605</b>	82	523
Materials Writers	3.4%	<b>1,087</b>	169	918
Nonnative English Speakers in TESOL	2.8%	<b>907</b>	159	748
Program Administration	3.5%	<b>1,130</b>	219	911
Refugee Concerns	2.2%	<b>700</b>	83	617
Second Language Writing	6.1%	<b>1,952</b>	364	1,588
Speech, Pronunciation, and Listening	5.3%	<b>1,702</b>	261	1,441
Social Responsibility	2.2%	<b>702</b>	107	595
Secondary Schools	2.8%	<b>891</b>	305	586
Teacher Education	7.2%	<b>2,295</b>	637	1,658
Video & Digital Media	3.5%	<b>1,114</b>	82	1,032
<i>9,587 distinct members</i>		<b>Total # of IS memberships</b>	<b>31,971</b>	9,567 22,404

The total count is the number of IS memberships total and may either be LESS or MORE than the actual number of individual members of TESOL. Due to open access to Interest Sections, these numbers may fluctuate considerably each month. For instance, one member may have selected four interest sections, while some members may belong to none.

### Interest Sections

(Primary)

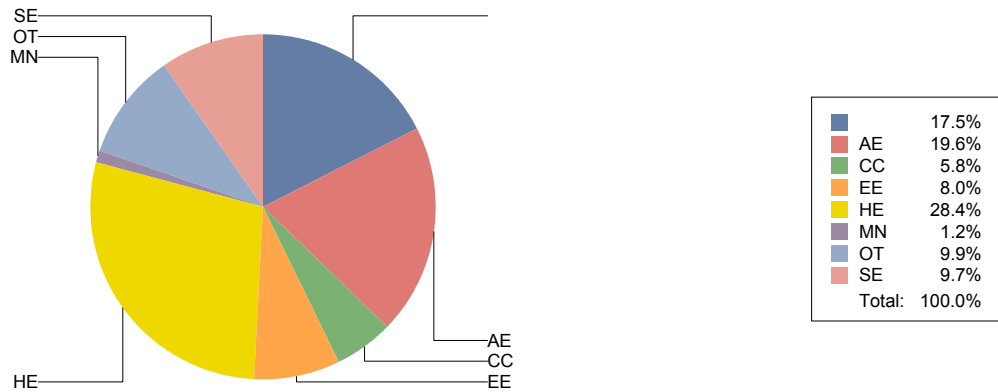


## Basic Statistics on Area of Work (Members paid through >= 3/31/2016)

		<b>1,984</b>	17.5%
Adult Education	<b>AE</b>	<b>2,224</b>	19.6%
Community/2yr College	<b>CC</b>	<b>657</b>	5.8%
Elementary Education	<b>EE</b>	<b>905</b>	8.0%
Postsecondary Education	<b>HE</b>	<b>3,216</b>	28.4%
Mainstream	<b>MN</b>	<b>132</b>	1.2%
Other	<b>OT</b>	<b>1,127</b>	9.9%
Secondary Education	<b>SE</b>	<b>1,096</b>	9.7%
		<b>11,341</b>	

Only members who selected an area of work are included on this report. Other members may not have responded to this question and are excluded from the count.

### Areas of Work



(Blanks indicate no response)

## Statistics on Areas of Interest (Members paid through >= 3/31/2016)

<u>CODE</u>	<u>DESCRIPTION</u>	<u>TOTAL*</u>	<u>% of TOTAL*</u>
TE	Teacher education	1,573	5%
CURRICULUM	Materials development/Curriculum	1,531	4%
EFL	English as a foreign language	1,470	4%
SLA	Second language acquisition	1,440	4%
AL	Applied linguistics	1,379	4%
HE	Higher education	1,339	4%
WRITING	Writing/composition	1,314	4%
IC	Multiculturalism/intercultural communications	1,304	4%
CALL	Technology in education	1,291	4%
IEP	Intensive English programs	1,259	4%
AE	Adult education	1,232	4%
PROFDEV	Professional development	1,179	3%
CONTENT	Content-based instruction	1,152	3%
SP	Speaking/pronunciation	1,075	3%
READING	Reading/literacy	1,054	3%
GRAMMAR	Grammar	1,010	3%
ASSESS	Assessment/testing	985	3%
ESP	English for specific purposes	947	3%
RS	Research	899	3%
PA	Program administration	716	2%
DISTANCE	Distance learning/Online Education	713	2%
VOCAB	Vocabulary/Lexicon	707	2%
BE	Bilingual education	667	2%
SOCIAL	Social/global/political concerns	606	2%
LISTEN	Listening	580	2%
ISKILL	Integrated Skills	578	2%
WORKPLACE	Workplace English instruction/Business English	560	2%
VI	Video and digital media	558	2%
EE	Elementary/primary education	530	2%
SS	Secondary education	507	1%
COMMCOLL	Community college/technical ed	455	1%
LINGUISTICS	Theoretical Linguistics	393	1%
RC	Refugee concerns	392	1%
STANDARDS	Standards	379	1%
LIT	Literature	353	1%
ITA	International teaching assistants	347	1%
FAMILY	Community/family outreach	285	1%
NNES	NNES/NES issues	285	1%
EMPLOYMENT	Employment issues/Certification	276	1%
PUBLICPOLICY	Public policy	243	1%
LDSN	Learning Disorders/Special Needs	236	1%
ACCRED	Accreditation	235	1%
MAINSTREAMING	Mainstreaming	205	1%
ARTS	Arts/Media/Science/Math/Social Science	167	0%
STYLISTICS	Stylistics	65	0%

Sorted in order of prevalence.

*\* Note: Members are encouraged to choose multiple areas of interest and some members do not choose any areas of interest. The total number of distinct members (4,358) represented in this report is less than the total number of active members as indicated elsewhere in this report.*

*Areas of interest are separate from official TESOL interest sections. Areas of interest represent distinct areas in which a member may be interested, rather than official entities in which a member is involved.*

*Areas of interest which have a very low count may be recent additions to the AOI list, or may reflect overall trends in membership.*

## Statistics on Areas of Expertise (Members paid through >= 3/31/2016)

<u>CODE</u>	<u>DESCRIPTION</u>	<u>TOTAL*</u>	<u>% of TOTAL*</u>
EFL	English as a foreign language	956	6%
CURRICULUM	Materials development/Curriculum	849	5%
AE	Adult education	816	5%
WRITING	Writing/composition	787	5%
IEP	Intensive English programs	764	5%
TE	Teacher education	737	5%
AL	Applied linguistics	731	5%
HE	Higher education	693	4%
SLA	Second language acquisition	627	4%
CONTENT	Content-based instruction	595	4%
GRAMMAR	Grammar	568	4%
CALL	Technology in education	506	3%
IC	Multiculturalism/intercultural communications	498	3%
PROFDEV	Professional development	473	3%
ESP	English for specific purposes	471	3%
SP	Speaking/pronunciation	442	3%
READING	Reading/literacy	436	3%
PA	Program administration	407	3%
ASSESS	Assessment/testing	404	3%
EE	Elementary/primary education	349	2%
ISKILL	Integrated Skills	333	2%
DISTANCE	Distance learning/Online Education	308	2%
COMMCOLL	Community college/technical ed	284	2%
SS	Secondary education	278	2%
RS	Research	272	2%
BE	Bilingual education	262	2%
WORKPLACE	Workplace English instruction/Business English	245	2%
LISTEN	Listening	237	1%
VOCAB	Vocabulary/Lexicon	207	1%
LIT	Literature	183	1%
SOCIAL	Social/global/political concerns	149	1%
VI	Video and digital media	149	1%
ACCRED	Accreditation	127	1%
ITA	International teaching assistants	124	1%
NNES	NNES/NES issues	124	1%
LINGUISTICS	Theoretical Linguistics	94	1%
STANDARDS	Standards	94	1%
MAINSTREAMING	Mainstreaming	89	1%
FAMILY	Community/family outreach	85	1%
RC	Refugee concerns	83	1%
ARTS	Arts/Media/Science/Math/Social Science	80	0%
EMPLOYMENT	Employment issues/Certification	74	0%
LDSN	Learning Disorders/Special Needs	74	0%
PUBLICPOLICY	Public policy	51	0%
STYLISTICS	Stylistics	16	0%

Sorted in order of prevalence.

*\* Note: Members are encouraged to choose multiple areas of expertise and some members do not choose any areas of expertise. The total number of distinct members (3,512) represented in this report is less than the total number of active members as indicated elsewhere in this report.*

*Areas of Expertise are separate from official TESOL interest sections or Areas of Interest. Areas of expertise represent distinct areas in which a member may be experienced in, rather than official entities in which a member is involved.*

*Areas of interest which have a very low count may be recent additions to the AOI list, or may reflect overall trends in membership.*