

11/14/2014

Membership Statistics: Grand totals for basic membership, by member type and country

		<u># Memberships</u>	<u># Members</u>
IND	BASIC		
	Existing Member(s)	5,085	5,085
	New as of 10/1/2014 or later	175	175
IND	BASIC	5,260	5,260

IND2	BASIC		
	Existing Member(s)	2,038	2,038
	New as of 10/1/2014 or later	12	12
IND2	BASIC	2,050	2,050

STU	BASIC		
	Existing Member(s)	1,005	1,005
	New as of 10/1/2014 or later	76	76
STU	BASIC	1,081	1,081

STU2	BASIC		
	Existing Member(s)	441	441
	New as of 10/1/2014 or later	14	14
STU2	BASIC	455	455

LIF	BASIC		
	Existing Member(s)	50	50
LIF	BASIC	50	50

RET	BASIC		
	Existing Member(s)	143	143
RET	BASIC	143	143

RET2	BASIC		
	Existing Member(s)	91	91
RET2	BASIC	91	91

PTR	BASIC		
	Existing Member(s)	546	546
	New as of 10/1/2014 or later	27	27
PTR	BASIC	573	573

PTR2	BASIC		
	Existing Member(s)	230	230
	New as of 10/1/2014 or later	5	5
PTR2	BASIC	235	235

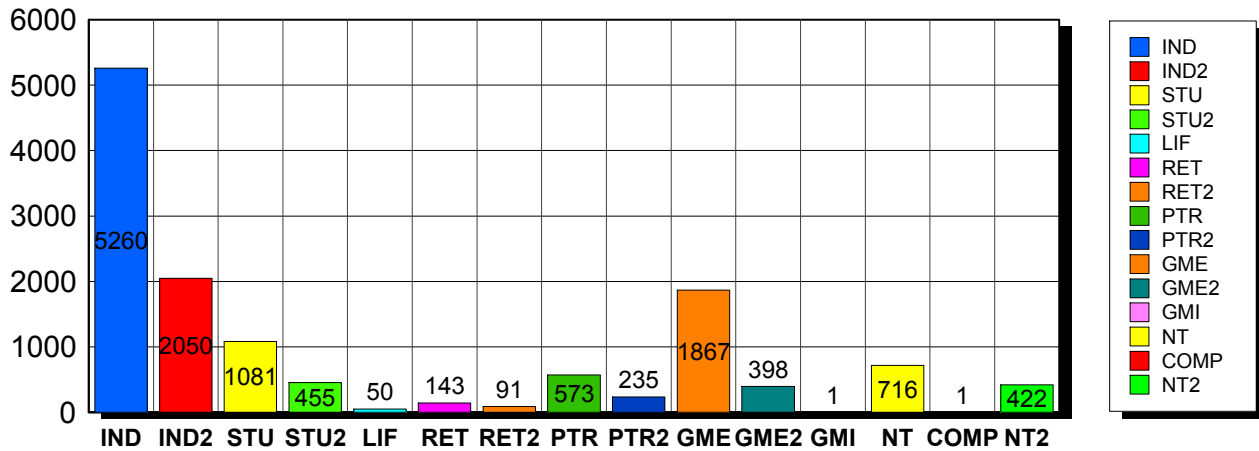
GME	BASIC		
	Existing Member(s)	1,739	1,739
	New as of 10/1/2014 or later	128	128
GME	BASIC	1,867	1,867

GME2	BASIC		
	Existing Member(s)	389	389
	New as of 10/1/2014 or later	9	9
GME2	BASIC	398	398

GMI	BASIC		

	Existing Member(s)	1	1
GMI	BASIC	1	1
<hr/>			
NT	BASIC		
	Existing Member(s)	671	671
	New as of 10/1/2014 or later	45	45
NT	BASIC	716	716
<hr/>			
COMP	BASIC		
	Existing Member(s)	1	1
COMP	BASIC	1	1
<hr/>			
NT2	BASIC		
	Existing Member(s)	410	410
	New as of 10/1/2014 or later	12	12
NT2	BASIC	422	422
<hr/>			
Grand Total:		13,343	13,343

Member Types



Note: in all general statistic reports, joint household memberships are treated as "one" member EXCEPT in the second column of this report, where joints are counted as two people, providing the most accurate count of the number of TESOL members.

		Existing Member(s)	New as of 10/1/2014 or later	Total
COMP	United States	1	0	1
	Total	1	0	1
GME	United States	85	12	97
	ALBANIA	4	0	4
	ALGERIA	3	0	3
	ANGOLA	2	0	2
	ARGENTINA	18	0	18

		Existing Member(s)	New as of 10/1/2014 or later	Total
GME	ARMENIA	1	0	1
	AZERBAIJAN	3	2	5
	BANGLADESH	2	2	4
	BARBADOS	3	0	3
	BELARUS	2	0	2
	BOLIVIA	5	1	6
	BOSNIA AND	1	0	1
	BRAZIL	143	3	146
	BULGARIA	2	0	2
	BURKINA FASO	2	0	2
	CAMBODIA	1	0	1
	CAMEROON	3	0	3
	CANADA	1	0	1
	CHILE	7	0	7
	CHINA	494	57	551
	COLOMBIA	19	0	19
	COSTA RICA	18	1	19
	Cote d'Ivoire	1	0	1
	CROATIA	2	0	2
	CUBA	1	0	1
	DOMINICAN	7	0	7
	ECUADOR	26	5	31
	EGYPT	315	2	317
	EL SALVADOR	23	0	23
	ETHIOPIA	1	0	1
	GEORGIA	7	0	7
	GHANA	1	0	1
	GRENADA	2	0	2
	GUATEMALA	15	0	15
	HAITI	11	2	13
HONDURAS	5	0	5	

		Existing Member(s)	New as of 10/1/2014 or later	Total
GME	HONG KONG	1	0	1
	INDIA	47	2	49
	INDONESIA	8	0	8
	IRAN	5	0	5
	IRAQ	8	0	8
	ISRAEL	1	0	1
	JAMAICA	3	0	3
	JAPAN	1	0	1
	JORDAN	1	0	1
	KAZAKHSTAN	3	0	3
	KOSOVO	1	1	2
	KUWAIT	1	0	1
	KYRGYZSTAN	2	0	2
	LEBANON	3	0	3
	LIBERIA	1	0	1
	MACAO	2	0	2
	MACEDONIA	3	0	3
	MADAGASCAR	5	0	5
	MALAYSIA	8	0	8
	MALI	2	1	3
	MAURITANIA	3	2	5
	MEXICO	66	2	68
	MOLDOVA,	4	0	4
	MONGOLIA	7	21	28
	MOROCCO	25	0	25
	MOZAMBIQUE	1	0	1
	MYANMAR	1	0	1
	NEPAL	8	2	10
	NEW ZEALAND	0	1	1
	NICARAGUA	4	0	4
NIGER	2	0	2	

		Existing Member(s)	New as of 10/1/2014 or later	Total
GME	NIGERIA	10	1	11
	PAKISTAN	9	0	9
	PALESTINIAN	1	0	1
	PANAMA	14	1	15
	PARAGUAY	1	0	1
	PEOPLES REP	6	2	8
	PERU	82	1	83
	PHILIPPINES	11	0	11
	POLAND	2	2	4
	QATAR	1	0	1
	ROMANIA	3	0	3
	RUSSIA	13	1	14
	RUSSIAN	4	1	5
	RWANDA	2	0	2
	SAUDI ARABIA	2	0	2
	SENEGAL	3	0	3
	SOUTH AFRICA	4	0	4
	SOUTH KOREA	1	0	1
	SRI LANKA	1	0	1
	SWAZILAND	1	0	1
	TAIWAN ROC	12	0	12
	TAJIKISTAN	2	0	2
	TANZANIA,	1	0	1
	THAILAND	16	0	16
	TRINIDAD AND	1	0	1
	TUNISIA	16	0	16
	TURKEY	18	0	18
	UKRAINE	1	0	1
	UNITED ARAB	2	0	2
	UNITED	3	0	3
URUGUAY	7	0	7	

		Existing Member(s)	New as of 10/1/2014 or later	Total
GME	UZBEKISTAN	4	0	4
	VANUATU	1	0	1
	VENEZUELA	12	0	12
	VIET NAM	2	0	2
	VIETNAM	2	0	2
	YEMEN	4	0	4
	ZIMBABWE	1	0	1
	Total	1,739	128	1,867
GME2	United States	7	0	7
	AFGHANISTAN	3	0	3
	ALBANIA	7	0	7
	ALGERIA	1	0	1
	ARGENTINA	6	1	7
	ARMENIA	2	0	2
	AZERBAIJAN	1	0	1
	BANGLADESH	2	0	2
	BELARUS	1	0	1
	BENIN	3	0	3
	BOLIVIA	2	0	2
	BRAZIL	56	0	56
	BURKINA FASO	2	0	2
	CAMEROON	2	0	2
	CHILE	3	0	3
	CHINA	40	3	43
	COLOMBIA	9	0	9
	COSTA RICA	6	0	6
	DOMINICAN	3	0	3
	ECUADOR	11	0	11
	EGYPT	4	0	4
	EL SALVADOR	1	0	1
	ETHIOPIA	2	0	2

		Existing Member(s)	New as of 10/1/2014 or later	Total
GME2	GABON	0	1	1
	GAMBIA	1	0	1
	GEORGIA	2	0	2
	GERMANY	1	0	1
	GRENADA	1	0	1
	GUINEA	2	0	2
	HONG KONG	1	0	1
	INDIA	16	0	16
	INDONESIA	4	0	4
	IRAN	1	0	1
	IRAQ	2	0	2
	JORDAN	2	0	2
	KAZAKHSTAN	1	1	2
	KENYA	1	0	1
	Korea, Republic	1	0	1
	KOSOVO	1	0	1
	LATVIA	1	0	1
	LEBANON	4	0	4
	LESOTHO	2	0	2
	LIBERIA	1	0	1
	LITHUANIA	1	0	1
	MADAGASCAR	2	0	2
	MALAWI	2	0	2
	MALAYSIA	4	1	5
	MALDIVES	1	0	1
	MALI	1	0	1
	MARSHALL	1	0	1
	MAURITIUS	1	0	1
	MEXICO	33	0	33
	MICRONESIA,	2	0	2
MONGOLIA	5	1	6	

		Existing Member(s)	New as of 10/1/2014 or later	Total
GME2	MOROCCO	2	0	2
	MOZAMBIQUE	2	0	2
	NAMIBIA	2	0	2
	NIGERIA	3	0	3
	PAKISTAN	4	0	4
	PALESTINIAN	1	0	1
	PANAMA	7	0	7
	PARAGUAY	1	0	1
	PEOPLES REP	1	0	1
	PERU	4	0	4
	PHILIPPINES	8	0	8
	POLAND	4	0	4
	RUSSIA	3	0	3
	RUSSIAN	3	0	3
	RWANDA	2	0	2
	SENEGAL	1	0	1
	SIERRA LEONE	2	0	2
	SOUTH AFRICA	1	0	1
	SURINAME	1	0	1
	SWAZILAND	1	0	1
	SYRIAN ARAB	1	0	1
	TAIWAN ROC	3	0	3
	TAJKISTAN	2	0	2
	TANZANIA,	1	0	1
	THAILAND	16	1	17
	TOGO	1	0	1
	TUNISIA	2	0	2
TURKEY	20	0	20	
UGANDA	2	0	2	
URUGUAY	1	0	1	
VANUATU	1	0	1	

		Existing Member(s)	New as of 10/1/2014 or later	Total
GME2	VENEZUELA	2	0	2
	VIET NAM	1	0	1
	VIETNAM	7	0	7
	YEMEN	1	0	1
	ZAMBIA	3	0	3
	Total	389	9	398
GMI	CHILE	1	0	1
	Total	1	0	1
IND	United States	4,345	142	4,487
	AFGHANISTAN	1	0	1
	AUSTRALIA	18	3	21
	AUSTRIA	1	0	1
	BAHRAIN	2	0	2
	BELGIUM	2	0	2
	BERMUDA	1	0	1
	BRAZIL	10	2	12
	CANADA	189	7	196
	CHILE	3	1	4
	CHINA	4	0	4
	COLOMBIA	1	2	3
	COSTA RICA	2	0	2
	CYPRUS	2	0	2
	CZECH	5	0	5
	DENMARK	1	0	1
	DOMINICAN	1	0	1
	EGYPT	1	0	1
	FRANCE	4	0	4
	GERMANY	8	0	8
	GREECE	5	0	5
	GUAM	1	0	1
HONG KONG	2	0	2	

		Existing Member(s)	New as of 10/1/2014 or later	Total
IND	HONG KONG	2	1	3
	HUNGARY	1	0	1
	ICELAND	1	0	1
	INDIA	2	0	2
	IRAN, ISLAMIC	1	0	1
	IRAQ	1	0	1
	IRELAND	2	0	2
	ISRAEL	4	0	4
	ITALY	8	0	8
	JAPAN	254	5	259
	Korea, Republic	8	1	9
	KOREA,	8	0	8
	KUWAIT	6	0	6
	LUXEMBOURG	1	0	1
	MACAO	2	0	2
	MALAYSIA	5	0	5
	MARSHALL	1	0	1
	MEXICO	14	0	14
	MOLDOVA,	1	0	1
	MONGOLIA	0	1	1
	NEPAL	1	0	1
	NETHERLAND	1	0	1
	NEW ZEALAND	10	0	10
	NORWAY	2	0	2
	OMAN	6	0	6
	PAKISTAN	1	0	1
	PERU	1	0	1
	PORTUGAL	1	0	1
	QATAR	19	1	20
	RUSSIAN	1	0	1
SAUDI ARABIA	22	0	22	

		Existing Member(s)	New as of 10/1/2014 or later	Total
IND	SINGAPORE	4	1	5
	SOUTH KOREA	14	1	15
	SPAIN	5	0	5
	SWEDEN	2	2	4
	TAIWAN	3	1	4
	TAIWAN ROC	2	0	2
	THAILAND	2	0	2
	TURKEY	2	1	3
	UGANDA	1	0	1
	UNITED ARAB	24	1	25
	UNITED	20	2	22
	URUGUAY	2	0	2
	US MINOR	3	0	3
	VIET NAM	1	0	1
	VIETNAM	3	0	3
	YEMEN	1	0	1
	Total	5,085	175	5,260
IND2	United States	1,664	8	1,672
	AFGHANISTAN	1	0	1
	AUSTRALIA	14	0	14
	AUSTRIA	2	0	2
	BAHRAIN	2	0	2
	BOLIVIA	1	0	1
	BRAZIL	4	0	4
	CANADA	95	0	95
	CAYMAN	1	0	1
	CHINA	1	0	1
	COLOMBIA	1	0	1
	CYPRUS	1	0	1
	DENMARK	1	0	1
	FINLAND	1	0	1

		Existing Member(s)	New as of 10/1/2014 or later	Total
IND2	FRANCE	1	0	1
	GERMANY	6	0	6
	GREECE	1	0	1
	HONG KONG	6	0	6
	HONG KONG	7	0	7
	INDIA	2	0	2
	ISRAEL	4	0	4
	ITALY	3	0	3
	JAPAN	98	1	99
	KAZAKHSTAN	1	0	1
	Korea, Republic	3	0	3
	KOREA,	3	0	3
	KUWAIT	7	0	7
	LEBANON	1	0	1
	MACAO	4	0	4
	MALAYSIA	1	1	2
	MARTINIQUE	1	0	1
	MEXICO	1	0	1
	NETHERLAND	1	0	1
	NEW	1	0	1
	NEW ZEALAND	3	0	3
	NIGERIA	2	0	2
	NORWAY	1	0	1
	OMAN	1	0	1
	QATAR	15	0	15
	ROMANIA	1	0	1
	RUSSIAN	1	0	1
	SAUDI ARABIA	13	1	14
	SINGAPORE	3	0	3
	SLOVAKIA	2	0	2
SOUTH KOREA	8	0	8	

		Existing Member(s)	New as of 10/1/2014 or later	Total
IND2	SPAIN	3	0	3
	SWEDEN	1	0	1
	SWITZERLAND	4	0	4
	TAIWAN	6	0	6
	TAIWAN ROC	1	0	1
	THAILAND	3	0	3
	TURKEY	3	0	3
	UKRAINE	0	1	1
	UNITED ARAB	14	0	14
	UNITED	7	0	7
	US MINOR	2	0	2
	VENEZUELA	2	0	2
	Virgin Islands,	1	0	1
	Total	2,038	12	2,050
LIF	United States	41	0	41
	AUSTRALIA	1	0	1
	CANADA	2	0	2
	EGYPT	1	0	1
	ISRAEL	1	0	1
	JAPAN	1	0	1
	UNITED ARAB	1	0	1
	UNITED	2	0	2
	Total	50	0	50
NT	United States	614	38	652
	AUSTRALIA	3	1	4
	BRAZIL	1	0	1
	BURUNDI	1	0	1
	CANADA	15	1	16
	COLOMBIA	1	0	1
	COSTA RICA	1	0	1
	FRANCE	1	0	1

		Existing Member(s)	New as of 10/1/2014 or later	Total
NT	GERMANY	1	0	1
	GREECE	1	0	1
	GUAM	0	1	1
	HONG KONG	1	0	1
	INDIA	1	0	1
	ISRAEL	2	0	2
	ITALY	1	0	1
	JAPAN	7	0	7
	Korea, Republic	1	0	1
	KOREA,	0	1	1
	MALAYSIA	0	1	1
	MEXICO	1	0	1
	NEW ZEALAND	1	0	1
	OMAN	1	0	1
	QATAR	1	0	1
	RUSSIA	1	0	1
	SAUDI ARABIA	8	0	8
	SOUTH KOREA	2	0	2
	SWEDEN	0	1	1
	TURKEY	1	0	1
UNITED	3	1	4	
Total	671	45	716	
NT2	United States	369	10	379
	AUSTRALIA	7	0	7
	CANADA	4	1	5
	CHINA	1	0	1
	GERMANY	3	0	3
	HONG KONG	3	0	3
	JAPAN	7	0	7
	KOREA,	4	0	4
	KUWAIT	2	0	2

		Existing Member(s)	New as of 10/1/2014 or later	Total
NT2	MACAO	1	0	1
	MOROCCO	1	0	1
	NORWAY	1	0	1
	SAUDI ARABIA	1	0	1
	SOUTH KOREA	2	0	2
	SWITZERLAND	1	0	1
	TAIWAN	2	1	3
	UNITED ARAB	1	0	1
	Total	410	12	422
PTR	United States	460	20	480
	AUSTRALIA	3	0	3
	BRAZIL	1	0	1
	CANADA	12	2	14
	CAYMAN	0	1	1
	CHINA	1	1	2
	COLOMBIA	3	0	3
	COSTA RICA	3	0	3
	DOMINICAN	1	0	1
	ECUADOR	7	0	7
	GEORGIA	0	1	1
	GERMANY	1	0	1
	HONG KONG	1	0	1
	INDIA	1	0	1
	INDONESIA	1	0	1
	ISRAEL	1	0	1
	JAPAN	12	0	12
	KOREA,	2	0	2
	MEXICO	5	0	5
	NEPAL	1	0	1
NEW ZEALAND	1	0	1	
PAKISTAN	1	0	1	

		Existing Member(s)	New as of 10/1/2014 or later	Total
PTR	PANAMA	1	0	1
	PERU	3	0	3
	PHILIPPINES	2	0	2
	Puerto Rico	1	0	1
	SAUDI ARABIA	3	0	3
	SOUTH AFRICA	1	0	1
	SOUTH KOREA	1	0	1
	TAIWAN	2	0	2
	THAILAND	1	0	1
	TURKEY	1	0	1
	UKRAINE	1	0	1
	UNITED ARAB	1	0	1
	UNITED	7	1	8
	VENEZUELA	1	0	1
	VIET NAM	1	0	1
	VIETNAM	1	1	2
	Total	546	27	573
PTR2	United States	180	3	183
	ARGENTINA	1	0	1
	ARMENIA	1	0	1
	AUSTRALIA	1	0	1
	CANADA	7	0	7
	CHILE	1	0	1
	CHINA	2	0	2
	COLOMBIA	2	0	2
	CZECH	1	0	1
	GERMANY	1	0	1
	GREECE	2	0	2
	INDIA	1	0	1
	INDONESIA	1	0	1
	ISRAEL	1	0	1

		Existing Member(s)	New as of 10/1/2014 or later	Total
PTR2	JAPAN	8	0	8
	MACAO	1	0	1
	MEXICO	3	0	3
	PAKISTAN	1	0	1
	POLAND	1	0	1
	QATAR	1	0	1
	SAUDI ARABIA	7	0	7
	TAIWAN	1	2	3
	THAILAND	1	0	1
	TURKEY	4	0	4
	Total	230	5	235
RET	United States	131	0	131
	BRAZIL	1	0	1
	CANADA	1	0	1
	COLOMBIA	1	0	1
	GERMANY	2	0	2
	HONG KONG	1	0	1
	ISRAEL	2	0	2
	JAPAN	1	0	1
	PORTUGAL	1	0	1
	SWEDEN	1	0	1
	UNITED	1	0	1
	Total	143	0	143
RET2	United States	82	0	82
	AUSTRALIA	1	0	1
	CANADA	1	0	1
	ISRAEL	2	0	2
	ITALY	1	0	1
	JAPAN	3	0	3
	SPAIN	1	0	1
	Total	91	0	91

		Existing Member(s)	New as of 10/1/2014 or later	Total
STU	United States	862	68	930
	AMERICAN	1	0	1
	AUSTRALIA	8	0	8
	BRAZIL	1	0	1
	CAMBODIA	1	0	1
	CANADA	33	2	35
	CHINA	4	2	6
	COSTA RICA	1	0	1
	ECUADOR	1	0	1
	FRANCE	1	0	1
	GERMANY	3	0	3
	GUATEMALA	1	0	1
	INDIA	1	0	1
	IRAQ	1	0	1
	JAPAN	17	1	18
	Korea, Republic	2	0	2
	KOREA,	1	0	1
	KUWAIT	1	0	1
	MEXICO	14	0	14
	NEW ZEALAND	1	0	1
	PHILIPPINES	1	0	1
	SAUDI ARABIA	2	1	3
	SCOTLAND	1	0	1
	SOUTH KOREA	4	0	4
	SPAIN	0	1	1
	SRI LANKA	1	0	1
	THAILAND	24	0	24
TUNISIA	2	0	2	
TURKEY	9	0	9	
UGANDA	1	0	1	
UKRAINE	1	0	1	

		Existing Member(s)	New as of 10/1/2014 or later	Total
STU	UNITED ARAB	0	1	1
	UNITED	2	0	2
	US MINOR	1	0	1
	YEMEN	1	0	1
	Total	1,005	76	1,081
STU2	United States	386	12	398
	AUSTRALIA	6	0	6
	BRAZIL	1	0	1
	CANADA	18	2	20
	CHILE	1	0	1
	CHINA	1	0	1
	INDONESIA	1	0	1
	ISRAEL	2	0	2
	JAPAN	7	0	7
	Korea, Republic	1	0	1
	KOREA,	2	0	2
	LEBANON	1	0	1
	MACAO	1	0	1
	MALAYSIA	1	0	1
	MEXICO	2	0	2
	NEW ZEALAND	3	0	3
	Puerto Rico	1	0	1
	SAUDI ARABIA	1	0	1
	UNITED	5	0	5
	Total	441	14	455
Total	12,840	503	13,343	

This report is based on members paid through 10/31/2014 or later.

Country/State/Province	Total	
AFGHANISTAN	5	0.0%
ALBANIA	11	0.1%
ALGERIA	4	0.0%
AMERICAN SAMOA	1	0.0%
ANGOLA	2	0.0%
ARGENTINA	26	0.2%
ARMENIA	4	0.0%
AUSTRALIA	66	0.5%
AUSTRIA	3	0.0%
AZERBAIJAN	6	0.0%
BAHRAIN	4	0.0%
BANGLADESH	6	0.0%
BARBADOS	3	0.0%
BELARUS	3	0.0%
BELGIUM	2	0.0%
BENIN	3	0.0%
BERMUDA	1	0.0%
BOLIVIA	9	0.1%
BOSNIA AND HERZEGOVINA	1	0.0%
BRAZIL	223	1.7%
BULGARIA	2	0.0%
BURKINA FASO	4	0.0%
BURUNDI	1	0.0%
CAMBODIA	2	0.0%
CAMEROON	5	0.0%
CANADA		
<i>CANADA</i>	<i>9</i>	
<i>CANADA Alberta</i>	<i>37</i>	
<i>CANADA British Columbia</i>	<i>146</i>	
<i>CANADA Manitoba</i>	<i>13</i>	
<i>CANADA New Brunswick</i>	<i>11</i>	
<i>CANADA Newfoundland</i>	<i>3</i>	
<i>CANADA Nova Scotia</i>	<i>8</i>	
<i>CANADA Ontario</i>	<i>128</i>	
<i>CANADA Quebec</i>	<i>22</i>	
<i>CANADA Saskatchewan</i>	<i>16</i>	
CANADA	393	2.9%
CAYMAN ISLANDS	2	0.0%
CHILE	17	0.1%
CHINA	611	4.6%
COLOMBIA	39	0.3%
COSTA RICA	32	0.2%
Cote d'Ivoire	1	0.0%
CROATIA	2	0.0%
CUBA	1	0.0%
CYPRUS	3	0.0%
CZECH REPUBLIC	6	0.0%
DENMARK	2	0.0%
DOMINICAN REPUBLIC	12	0.1%
ECUADOR	50	0.4%
EGYPT	323	2.4%
EL SALVADOR	24	0.2%
ETHIOPIA	3	0.0%
FINLAND	1	0.0%
FRANCE	7	0.1%
GABON	1	0.0%
GAMBIA	1	0.0%

GEORGIA	10	0.1%
GERMANY	26	0.2%
GHANA	1	0.0%
GREECE	9	0.1%
GRENADA	3	0.0%
GUAM	2	0.0%
GUATEMALA	16	0.1%
GUINEA	2	0.0%
HAITI	13	0.1%
HONDURAS	5	0.0%
HONG KONG	13	0.1%
HONG KONG SAR CHINA	13	0.1%
HUNGARY	1	0.0%
ICELAND	1	0.0%
INDIA	73	0.5%
INDONESIA	15	0.1%
IRAN	6	0.0%
IRAN, ISLAMIC REPUBLIC OF	1	0.0%
IRAQ	12	0.1%
IRELAND	2	0.0%
ISRAEL	20	0.1%
ITALY	13	0.1%
JAMAICA	3	0.0%
JAPAN	423	3.2%
JORDAN	3	0.0%
KAZAKHSTAN	6	0.0%
KENYA	1	0.0%
Korea, Republic Of	17	0.1%
KOREA, REPUBLIC OF	21	0.2%
KOSOVO (UNMIK)	3	0.0%
KUWAIT	17	0.1%
KYRGYZSTAN	2	0.0%
LATVIA	1	0.0%
LEBANON	9	0.1%
LESOTHO	2	0.0%
LIBERIA	2	0.0%
LITHUANIA	1	0.0%
LUXEMBOURG	1	0.0%
MACAO	11	0.1%
MACEDONIA	3	0.0%
MADAGASCAR	7	0.1%
MALAWI	2	0.0%
MALAYSIA	22	0.2%
MALDIVES	1	0.0%
MALI	4	0.0%
MARSHALL ISLANDS	2	0.0%
MARTINIQUE	1	0.0%
MAURITANIA	5	0.0%
MAURITIUS	1	0.0%
MEXICO	141	1.1%
MICRONESIA, FED STATES OF	2	0.0%
MOLDOVA, REPUBLIC OF	5	0.0%
MONGOLIA	35	0.3%
MOROCCO	28	0.2%
MOZAMBIQUE	3	0.0%
MYANMAR	1	0.0%
NAMIBIA	2	0.0%
NEPAL	12	0.1%
NETHERLANDS	2	0.0%
NEW CALEDONIA	1	0.0%
NEW ZEALAND	20	0.1%

NICARAGUA		4	0.0%
NIGER		2	0.0%
NIGERIA		16	0.1%
NORWAY		4	0.0%
OMAN		8	0.1%
PAKISTAN		16	0.1%
PALESTINIAN TERRITORY		2	0.0%
PANAMA		23	0.2%
PARAGUAY		2	0.0%
PEOPLES REP OF CHINA		9	0.1%
PERU		91	0.7%
PHILIPPINES		22	0.2%
POLAND		9	0.1%
PORTUGAL		2	0.0%
Puerto Rico		2	0.0%
OATAR		38	0.3%
ROMANIA		4	0.0%
RUSSIA		18	0.1%
RUSSIAN FEDERATION		10	0.1%
RWANDA		4	0.0%
SAUDI ARABIA		61	0.5%
SCOTLAND		1	0.0%
SENEGAL		4	0.0%
SIERRA LEONE		2	0.0%
SINGAPORE		8	0.1%
SLOVAKIA		2	0.0%
SOUTH AFRICA		6	0.0%
SOUTH KOREA		33	0.2%
SPAIN		10	0.1%
SRI LANKA		2	0.0%
SURINAME		1	0.0%
SWAZILAND		2	0.0%
SWEDEN		7	0.1%
SWITZERLAND		5	0.0%
SYRIAN ARAB REPUBLIC		1	0.0%
TAIWAN		18	0.1%
TAIWAN ROC		18	0.1%
TAJKISTAN		4	0.0%
TANZANIA, UNITED REPUBLIC		2	0.0%
THAILAND		64	0.5%
TOGO		1	0.0%
TRINIDAD AND TOBAGO		1	0.0%
TUNISIA		20	0.1%
TURKEY		60	0.4%
UGANDA		4	0.0%
UKRAINE		4	0.0%
UNITED ARAB EMIRATES		45	0.3%
UNITED KINGDOM		54	0.4%
URUGUAY		10	0.1%
US MINOR OUTLYING ISLANDS		6	0.0%
USA			
<i>USA</i>		<i>66</i>	
<i>USA</i>	<i>Alabama</i>	<i>87</i>	
<i>USA</i>	<i>Alaska</i>	<i>16</i>	
<i>USA</i>	<i>American Embassy</i>	<i>12</i>	
<i>USA</i>	<i>Arizona</i>	<i>223</i>	
<i>USA</i>	<i>Arkansas</i>	<i>83</i>	
<i>USA</i>	<i>Armed Forces</i>	<i>8</i>	
<i>USA</i>	<i>Armed Frces Americas</i>	<i>4</i>	
<i>USA</i>	<i>British Columbia</i>	<i>4</i>	
<i>USA</i>	<i>California</i>	<i>944</i>	

USA	Colorado	181	
USA	Connecticut	126	
USA	Delaware	48	
USA	District of Columbia	158	
USA	Florida	336	
USA	Georgia	181	
USA	Guam	2	
USA	Hawaii	72	
USA	Idaho	54	
USA	Illinois	360	
USA	Indiana	161	
USA	Iowa	91	
USA	Kansas	161	
USA	Kentucky	85	
USA	Louisiana	42	
USA	Maine	35	
USA	Marshall Islands	1	
USA	Maryland	294	
USA	Massachusetts	332	
USA	Michigan	246	
USA	Minnesota	153	
USA	Mississippi	57	
USA	Missouri	187	
USA	Montana	27	
USA	Nebraska	50	
USA	Nevada	48	
USA	New Hampshire	58	
USA	New Jersey	259	
USA	New Mexico	55	
USA	New York	671	
USA	North Carolina	167	
USA	North Dakota	19	
USA	Nunavut	1	
USA	Ohio	285	
USA	Oklahoma	69	
USA	Ontario	6	
USA	Oregon	576	
USA	Pennsylvania	332	
USA	Puerto Rico	18	
USA	Quebec	1	
USA	Rhode Island	41	
USA	South Carolina	51	
USA	South Dakota	7	
USA	Tennessee	118	
USA	Texas	493	
USA	Utah	103	
USA	Vermont	58	
USA	Virgin Islands	3	
USA	Virginia	380	
USA	Washington	647	
USA	West Virginia	29	
USA	Wisconsin	144	
USA	Wyoming	14	
USA	Yukon Territory	1	
USA		9,541	71.5%
UZBEKISTAN		4	0.0%
VANUATU		2	0.0%
VENEZUELA		17	0.1%
VIET NAM		5	0.0%

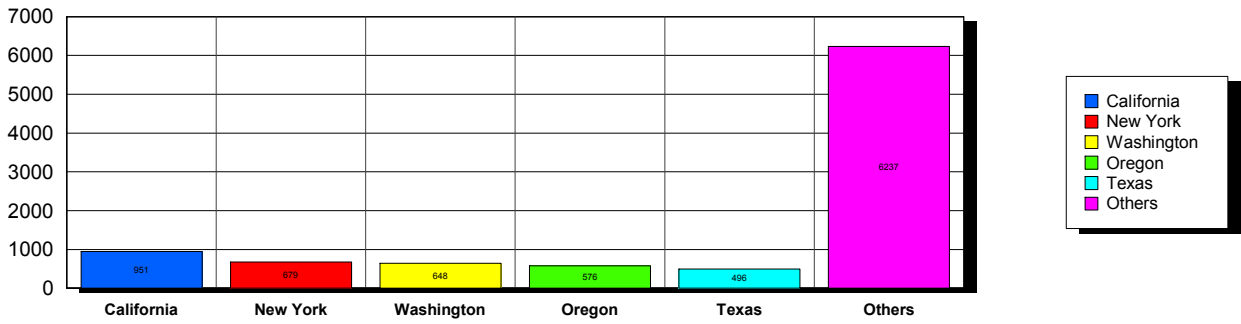
VIETNAM	14	0.1%
Virgin Islands, US	1	0.0%
YEMEN	7	0.1%
ZAMBIA	3	0.0%
ZIMBABWE	1	0.0%
<u>Grand Total:</u>	13,345	

167 distinct countries represented.

02-geographic.rpt 10/31/2014

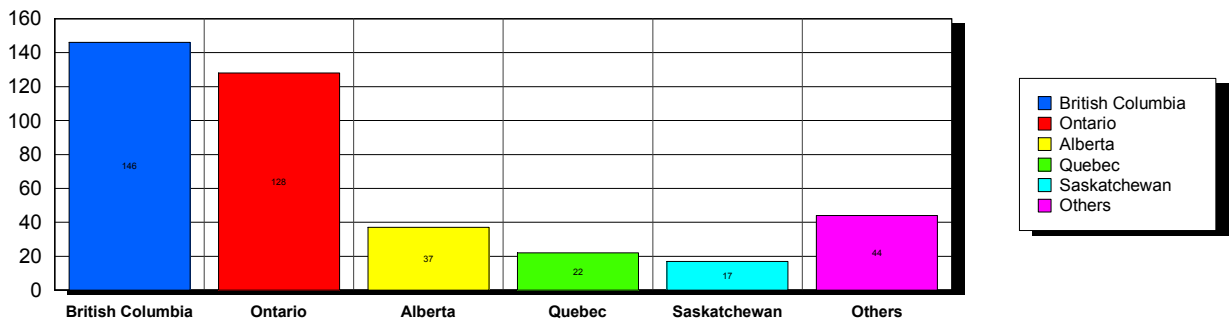
USA

Top 5 States per Country

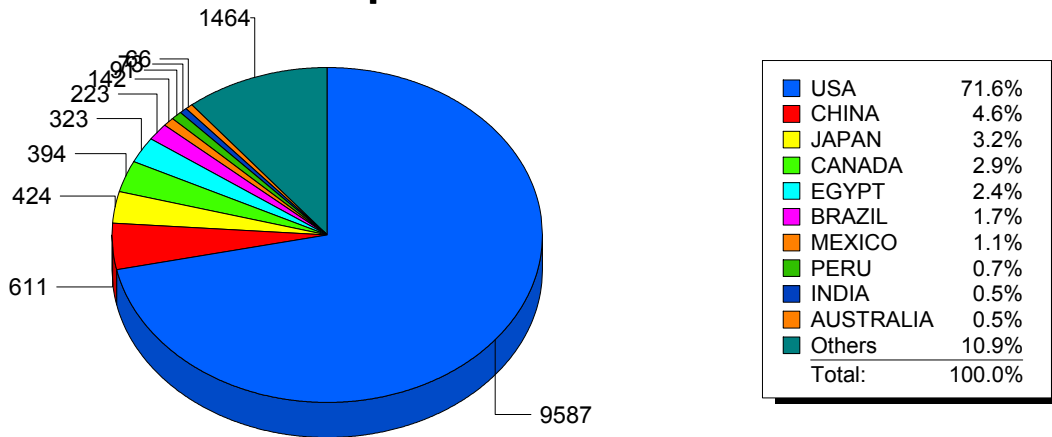


CANADA

Top 5 States per Country



Top 10 Countries



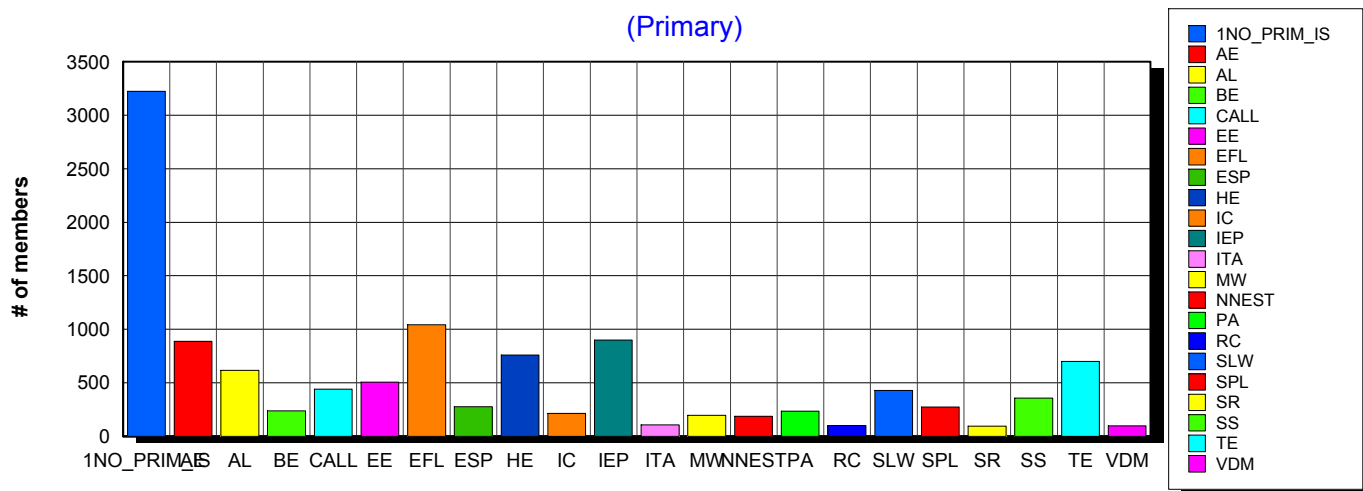
11/14/2014 **Basic statistics on Primary vs. other memberships in interest sections. For members paid through 10/31/2014 or later.**

		<i>Primary versus other</i>		
No Primary Interest Section	8.8%	3,240	3,223	17
Adult Education	6.1%	2,235	888	1,347
Applied Linguistics	5.7%	2,099	617	1,482
Bilingual Education	3.1%	1,152	236	916
Computer-Assisted Language Learning	5.2%	1,922	439	1,483
Elementary Education	3.1%	1,154	506	648
English as a Foreign Language	7.2%	2,642	1,043	1,599
English for Specific Purposes	4.2%	1,547	277	1,270
Higher Education	6.1%	2,240	760	1,480
Intercultural Communication	4.6%	1,696	213	1,483
Intensive English Programs	6.2%	2,270	900	1,370
International Teaching Assistants	2.0%	722	105	617
Materials Writers	3.3%	1,198	195	1,003
Nonnative English Speakers in TESOL	2.8%	1,028	186	842
Program Administration	3.2%	1,182	234	948
Refugee Concerns	2.0%	722	99	623
Second Language Writing	6.1%	2,223	428	1,795
Speech, Pronunciation, and Listening	5.2%	1,922	272	1,650
Social Responsibility	2.0%	716	95	621
Secondary Schools	2.8%	1,012	356	656
Teacher Education	6.9%	2,531	699	1,832
Video & Digital Media	3.4%	1,259	96	1,163
<i>11,842 distinct members</i>		Total # of IS memberships	36,712	<i>11,867</i>
				<i>24,845</i>

The total count is the number of IS memberships total and may either be LESS or MORE than the actual number of individual members of TESOL. Due to open access to Interest Sections, these numbers may fluctuate considerably each month. For instance, one member may have selected four interest sections, while some members may belong to none.

Interest Sections

(Primary)

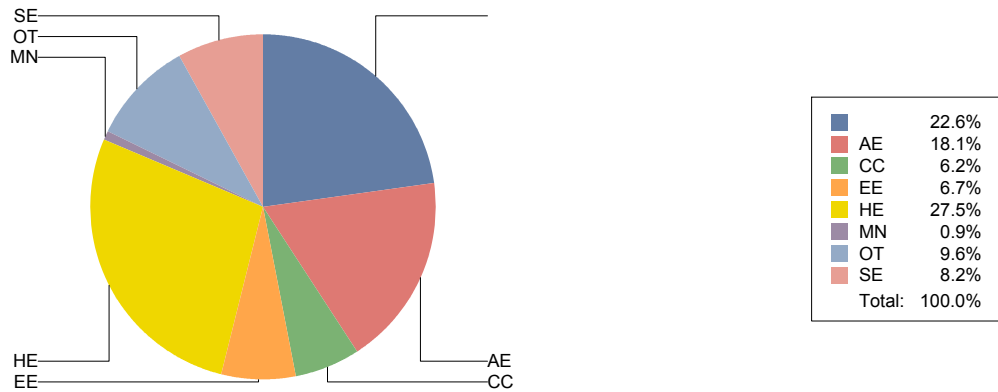


Basic Statistics on Area of Work (Members paid through >= 10/31/2014)

		2,955	22.6%
Adult Education	AE	2,368	18.1%
Community/2yr College	CC	814	6.2%
Elementary Education	EE	878	6.7%
Postsecondary Education	HE	3,589	27.5%
Mainstream	MN	122	0.9%
Other	OT	1,255	9.6%
Secondary Education	SE	1,069	8.2%
		13,050	

Only members who selected an area of work are included on this report. Other members may not have responded to this question and are excluded from the count.

Areas of Work



(Blanks indicate no response)

Statistics on Areas of Interest (Members paid through >= 10/31/2014)

<u>CODE</u>	<u>DESCRIPTION</u>	<u>TOTAL*</u>	<u>% of TOTAL*</u>
TE	Teacher education	1,924	4%
CURRICULUM	Materials development/Curriculum	1,902	4%
EFL	English as a foreign language	1,875	4%
SLA	Second language acquisition	1,784	4%
WRITING	Writing/composition	1,698	4%
AL	Applied linguistics	1,697	4%
HE	Higher education	1,656	4%
CALL	Technology in education	1,649	4%
IEP	Intensive English programs	1,640	4%
IC	Multiculturalism/intercultural communications	1,620	4%
AE	Adult education	1,604	4%
CONTENT	Content-based instruction	1,463	3%
PROFDEV	Professional development	1,433	3%
READING	Reading/literacy	1,334	3%
SP	Speaking/pronunciation	1,329	3%
GRAMMAR	Grammar	1,277	3%
ASSESS	Assessment/testing	1,273	3%
ESP	English for specific purposes	1,178	3%
RS	Research	1,070	2%
DISTANCE	Distance learning/Online Education	887	2%
VOCAB	Vocabulary/Lexicon	886	2%
BE	Bilingual education	861	2%
PA	Program administration	852	2%
SOCIAL	Social/global/political concerns	757	2%
ISKILL	Integrated Skills	750	2%
WORKPLACE	Workplace English instruction/Business English	741	2%
LISTEN	Listening	717	2%
VI	Video and digital media	699	2%
EE	Elementary/primary education	656	2%
SS	Secondary education	650	2%
COMMCOLL	Community college/technical ed	586	1%
RC	Refugee concerns	505	1%
STANDARDS	Standards	477	1%
LINGUISTICS	Theoretical Linguistics	472	1%
LIT	Literature	462	1%
ITA	International teaching assistants	455	1%
FAMILY	Community/family outreach	374	1%
EMPLOYMENT	Employment issues/Certification	346	1%
NNES	NNES/NES issues	313	1%
LDSN	Learning Disorders/Special Needs	308	1%
PUBLICPOLICY	Public policy	303	1%
ACCRED	Accreditation	279	1%
MAINSTREAMING	Mainstreaming	249	1%
ARTS	Arts/Media/Science/Math/Social Science	213	0%
STYLISTICS	Stylistics	87	0%

Sorted in order of prevalence.

** Note: Members are encouraged to choose multiple areas of interest and some members do not choose any areas of interest. The total number of distinct members (5,529) represented in this report is less than the total number of active members as indicated elsewhere in this report.*

Areas of interest are separate from official TESOL interest sections. Areas of interest represent distinct areas in which a member may be interested, rather than official entities in which a member is involved.

Areas of interest which have a very low count may be recent additions to the AOI list, or may reflect overall trends in membership.

Statistics on Areas of Expertise (Members paid through >= 10/31/2014)

<u>CODE</u>	<u>DESCRIPTION</u>	<u>TOTAL*</u>	<u>% of TOTAL*</u>
EFL	English as a foreign language	1,194	6%
CURRICULUM	Materials development/Curriculum	1,034	5%
AE	Adult education	999	5%
WRITING	Writing/composition	987	5%
IEP	Intensive English programs	945	5%
TE	Teacher education	858	4%
AL	Applied linguistics	857	4%
HE	Higher education	844	4%
SLA	Second language acquisition	758	4%
CONTENT	Content-based instruction	711	4%
GRAMMAR	Grammar	705	4%
IC	Multiculturalism/intercultural communications	639	3%
CALL	Technology in education	588	3%
ESP	English for specific purposes	568	3%
PROFDEV	Professional development	540	3%
SP	Speaking/pronunciation	533	3%
READING	Reading/literacy	530	3%
ASSESS	Assessment/testing	491	3%
PA	Program administration	472	2%
EE	Elementary/primary education	432	2%
ISKILL	Integrated Skills	422	2%
COMMCOLL	Community college/technical ed	346	2%
DISTANCE	Distance learning/Online Education	339	2%
SS	Secondary education	339	2%
BE	Bilingual education	324	2%
WORKPLACE	Workplace English instruction/Business English	313	2%
RS	Research	301	2%
LISTEN	Listening	288	1%
VOCAB	Vocabulary/Lexicon	261	1%
LIT	Literature	235	1%
SOCIAL	Social/global/political concerns	190	1%
VI	Video and digital media	173	1%
ACCRED	Accreditation	151	1%
ITA	International teaching assistants	150	1%
NNES	NNES/NES issues	132	1%
FAMILY	Community/family outreach	121	1%
STANDARDS	Standards	113	1%
LINGUISTICS	Theoretical Linguistics	108	1%
ARTS	Arts/Media/Science/Math/Social Science	105	1%
RC	Refugee concerns	102	1%
MAINSTREAMING	Mainstreaming	101	1%
EMPLOYMENT	Employment issues/Certification	93	0%
LDSN	Learning Disorders/Special Needs	86	0%
PUBLICPOLICY	Public policy	54	0%
STYLISTICS	Stylistics	21	0%

Sorted in order of prevalence.

** Note: Members are encouraged to choose multiple areas of expertise and some members do not choose any areas of expertise. The total number of distinct members (4,373) represented in this report is less than the total number of active members as indicated elsewhere in this report.*

Areas of Expertise are separate from official TESOL interest sections or Areas of Interest. Areas of expertise represent distinct areas in which a member may be experienced in, rather than official entities in which a member is involved.

Areas of interest which have a very low count may be recent additions to the AOI list, or may reflect overall trends in membership.