

11/17/2015

Membership Statistics: Grand totals for basic membership, by member type and country

		<u># Memberships</u>	<u># Members</u>
IND	BASIC		
	Existing Member(s)	4,521	4,521
	New as of 10/1/2015 or later	106	106
IND	BASIC	4,627	4,627

IND2	BASIC		
	Existing Member(s)	2,108	2,108
	New as of 10/1/2015 or later	15	15
IND2	BASIC	2,123	2,123

STU	BASIC		
	Existing Member(s)	963	963
	New as of 10/1/2015 or later	28	28
STU	BASIC	991	991

STU2	BASIC		
	Existing Member(s)	441	441
	New as of 10/1/2015 or later	11	11
STU2	BASIC	452	452

LIF	BASIC		
	Existing Member(s)	51	51
LIF	BASIC	51	51

RET	BASIC		
	Existing Member(s)	152	152
RET	BASIC	152	152

RET2	BASIC		
	Existing Member(s)	94	94
RET2	BASIC	94	94

PTR	BASIC		
	Existing Member(s)	464	464
	New as of 10/1/2015 or later	14	14
PTR	BASIC	478	478

PTR2	BASIC		
	Existing Member(s)	257	257
	New as of 10/1/2015 or later	2	2
PTR2	BASIC	259	259

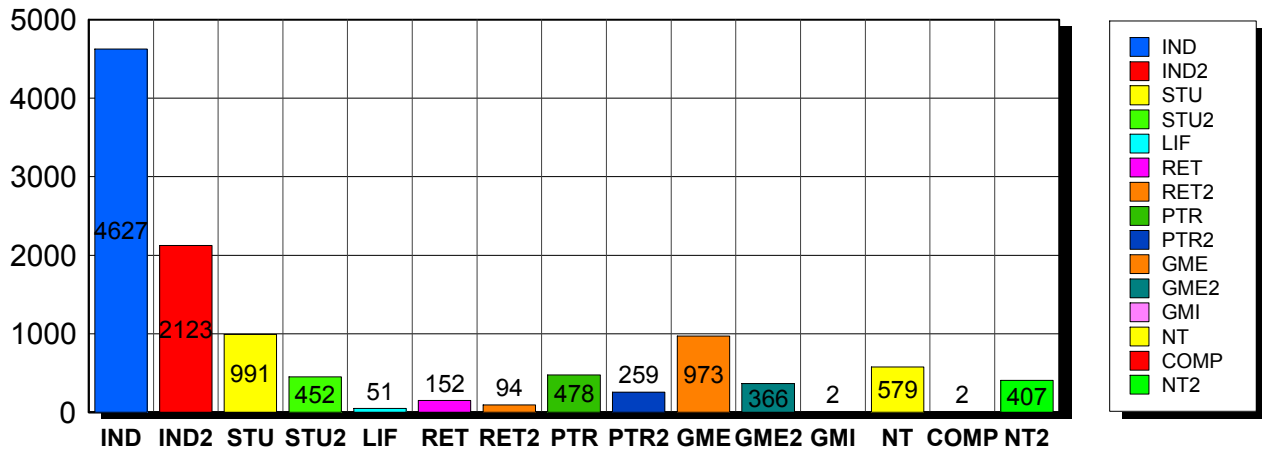
GME	BASIC		
	Existing Member(s)	937	937
	New as of 10/1/2015 or later	36	36
GME	BASIC	973	973

GME2	BASIC		
	Existing Member(s)	360	360
	New as of 10/1/2015 or later	6	6
GME2	BASIC	366	366

GMI	BASIC		

	New as of 10/1/2015 or later	2	2
GMI	BASIC	2	2
<hr/>			
NT	BASIC		
	Existing Member(s)	560	560
	New as of 10/1/2015 or later	19	19
NT	BASIC	579	579
<hr/>			
COMP	BASIC		
	Existing Member(s)	2	2
COMP	BASIC	2	2
<hr/>			
NT2	BASIC		
	Existing Member(s)	398	398
	New as of 10/1/2015 or later	9	9
NT2	BASIC	407	407
<hr/>			
Grand Total:		11,556	11,556

Member Types



Note: in all general statistic reports, joint household memberships are treated as "one" member EXCEPT in the second column of this report, where joints are counted as two people, providing the most accurate count of the number of TESOL members.

		Existing Member(s)	New as of 10/1/2015 or later	Total
COMP	United States	2	0	2
	Total	2	0	2
GME	United States	48	0	48
	ALBANIA	3	0	3
	ALGERIA	3	1	4
	ARGENTINA	17	1	18
	ARMENIA	1	0	1

		Existing Member(s)	New as of 10/1/2015 or later	Total
GME	AZERBAIJAN	5	1	6
	BANGLADESH	26	2	28
	BARBADOS	1	0	1
	BELIZE	2	0	2
	BOLIVIA	8	0	8
	BRAZIL	59	0	59
	BULGARIA	1	2	3
	BURKINA FASO	2	0	2
	CAMBODIA	3	0	3
	CAMEROON	3	0	3
	CHILE	10	1	11
	CHINA	142	3	145
	COLOMBIA	12	0	12
	COSTA RICA	8	0	8
	CROATIA	3	2	5
	DOMINICAN	8	0	8
	ECUADOR	75	0	75
	EGYPT	21	1	22
	GEORGIA	3	0	3
	GHANA	1	0	1
	GRENADA	2	0	2
	GUATEMALA	8	0	8
	HAITI	16	0	16
	HONDURAS	3	0	3
	HONG KONG	1	0	1
	HONG KONG	1	0	1
	HUNGARY	1	0	1
	INDIA	48	2	50
	INDONESIA	3	0	3
	IRAN	5	0	5
IRAQ	3	0	3	

		Existing Member(s)	New as of 10/1/2015 or later	Total
GME	JAMAICA	2	0	2
	JORDAN	1	0	1
	KENYA	1	0	1
	KOSOVO	1	0	1
	KUWAIT	1	0	1
	KYRGYZSTAN	2	0	2
	LEBANON	4	1	5
	MACAO	1	0	1
	MADAGASCAR	3	1	4
	MALAYSIA	16	0	16
	MALI	1	0	1
	MAURITANIA	10	0	10
	MEXICO	55	0	55
	MOLDOVA,	3	0	3
	MONGOLIA	23	0	23
	MOROCCO	23	0	23
	MOZAMBIQUE	1	0	1
	MYANMAR	2	0	2
	NEPAL	9	1	10
	NEW ZEALAND	1	0	1
	NICARAGUA	2	0	2
	NIGERIA	10	1	11
	PAKISTAN	14	4	18
	PALESTINIAN	2	0	2
	PANAMA	15	1	16
	PARAGUAY	1	0	1
	PEOPLES REP	6	0	6
PERU	54	1	55	
PHILIPPINES	9	4	13	
POLAND	4	0	4	
RUSSIA	6	0	6	

		Existing Member(s)	New as of 10/1/2015 or later	Total
GME	RUSSIAN	4	1	5
	RWANDA	2	0	2
	SAUDI ARABIA	1	0	1
	SERBIA	1	0	1
	SLOVAKIA	1	0	1
	SOUTH AFRICA	2	0	2
	SUDAN	2	0	2
	SWAZILAND	1	0	1
	SYRIAN ARAB	1	0	1
	TAIWAN ROC	5	0	5
	TANZANIA,	1	0	1
	THAILAND	17	1	18
	TUNISIA	3	0	3
	TURKEY	18	1	19
	UKRAINE	4	2	6
	UNITED	1	0	1
	United States	3	0	3
	UNITED	5	0	5
	URUGUAY	6	0	6
	UZBEKISTAN	1	0	1
	VENEZUELA	13	0	13
	VIET NAM	0	1	1
VIETNAM	5	0	5	
YEMEN	1	0	1	
Total	937	36	973	
GME2	United States	3	0	3
	AFGHANISTAN	1	0	1
	ALBANIA	5	0	5
	ANGOLA	1	0	1
	ARGENTINA	3	0	3
	ARMENIA	1	0	1

		Existing Member(s)	New as of 10/1/2015 or later	Total
GME2	AZERBAIJAN	1	0	1
	BANGLADESH	3	0	3
	BELARUS	1	0	1
	BOLIVIA	3	0	3
	BRAZIL	23	0	23
	BULGARIA	0	4	4
	BURKINA FASO	1	0	1
	CAMEROON	1	0	1
	CHILE	4	0	4
	CHINA	49	0	49
	COLOMBIA	10	0	10
	COSTA RICA	7	0	7
	CUBA	1	0	1
	DOMINICAN	4	0	4
	ECUADOR	16	0	16
	EGYPT	2	0	2
	GABON	2	0	2
	GEORGIA	1	0	1
	GRENADA	1	0	1
	GUATEMALA	1	0	1
	HONDURAS	1	0	1
	HONG KONG	1	0	1
	INDIA	23	0	23
	INDONESIA	5	0	5
	IRAQ	1	0	1
	JORDAN	3	0	3
	KAZAKHSTAN	2	0	2
	KOSOVO	1	0	1
	LATVIA	1	0	1
	LEBANON	2	0	2
LITHUANIA	1	0	1	

		Existing Member(s)	New as of 10/1/2015 or later	Total
GME2	MADAGASCAR	1	0	1
	MALAYSIA	6	0	6
	MARSHALL	1	0	1
	MAURITIUS	1	0	1
	MEXICO	25	1	26
	MONGOLIA	6	0	6
	MOROCCO	4	0	4
	NAMIBIA	1	0	1
	NEPAL	3	0	3
	NIGER	1	0	1
	NIGERIA	6	0	6
	PAKISTAN	5	0	5
	PANAMA	2	0	2
	PARAGUAY	1	0	1
	PEOPLES REP	1	0	1
	PERU	7	0	7
	PHILIPPINES	9	0	9
	POLAND	6	0	6
	RUSSIA	2	0	2
	RUSSIAN	4	0	4
	SENEGAL	1	0	1
	SIERRA LEONE	1	0	1
	SRI LANKA	1	0	1
	SURINAME	1	0	1
	SYRIAN ARAB	1	0	1
	TAIWAN ROC	2	0	2
	TAJIKISTAN	2	0	2
	THAILAND	14	0	14
	TUNISIA	3	0	3
	TURKEY	23	1	24
United States	1	0	1	

		Existing Member(s)	New as of 10/1/2015 or later	Total
GME2	UNITED	3	0	3
	URUGUAY	2	0	2
	UZBEKISTAN	19	0	19
	VANUATU	1	0	1
	VENEZUELA	2	0	2
	VIET NAM	1	0	1
	VIETNAM	3	0	3
	YEMEN	1	0	1
	Total	360	6	366
GMI	HAITI	0	1	1
	INDIA	0	1	1
	Total	0	2	2
IND	United States	3,398	73	3,471
	02453-2728	1	0	1
	AFGHANISTAN	1	0	1
	AUSTRALIA	23	1	24
	BAHRAIN	1	0	1
	BERMUDA	1	0	1
	BRAZIL	4	0	4
	CANADA	365	2	367
	CHINA	6	0	6
	COLOMBIA	2	1	3
	COSTA RICA	3	0	3
	CYPRUS	1	0	1
	CZECH	3	1	4
	DENMARK	3	0	3
	DOMINICAN	1	0	1
	ECUADOR	4	0	4
	EGYPT	1	1	2
	FINLAND	1	0	1
	FRANCE	4	0	4

		Existing Member(s)	New as of 10/1/2015 or later	Total
IND	GERMANY	6	0	6
	GREECE	3	0	3
	HONG KONG	12	0	12
	HONG KONG	4	0	4
	HUNGARY	1	0	1
	ICELAND	1	0	1
	INDIA	3	0	3
	IRELAND	2	0	2
	ISRAEL	4	0	4
	ITALY	8	0	8
	JAPAN	220	0	220
	JORDAN	1	2	3
	Korea, Dem	1	0	1
	Korea, Republic	5	0	5
	KOREA,	3	0	3
	KOSOVO	0	1	1
	KUWAIT	3	0	3
	MACAO	1	0	1
	MALAYSIA	2	0	2
	MEXICO	13	0	13
	MOROCCO	1	0	1
	NETHERLAND	2	1	3
	NEW ZEALAND	7	0	7
	NIGERIA	3	0	3
	NORWAY	3	1	4
	OMAN	3	0	3
	PAKISTAN	2	0	2
	PALESTINIAN	0	1	1
	PEOPLES REP	1	0	1
	PHILIPPINES	1	0	1
PORTUGAL	1	0	1	

		Existing Member(s)	New as of 10/1/2015 or later	Total
IND	Puerto Rico	10	0	10
	QATAR	16	0	16
	RUSSIAN	1	0	1
	SAUDI ARABIA	12	1	13
	SERBIA	1	0	1
	SINGAPORE	5	0	5
	SOUTH AFRICA	3	0	3
	SOUTH KOREA	10	0	10
	SPAIN	4	0	4
	SWEDEN	5	2	7
	SWITZERLAND	1	0	1
	TAIWAN	9	0	9
	TAIWAN ROC	3	0	3
	THAILAND	1	0	1
	TRINIDAD AND	1	0	1
	TURKEY	1	0	1
	UGANDA	1	0	1
	UNITED ARAB	32	2	34
	UNITED	13	1	14
	United States	17	0	17
	UNITED	231	15	246
	URUGUAY	1	0	1
VIET NAM	2	0	2	
VIETNAM	1	0	1	
Total	4,521	106	4,627	
IND2	United States	1,651	7	1,658
	AUSTRALIA	16	0	16
	AUSTRIA	2	0	2
	BAHRAIN	3	0	3
	BENIN	1	0	1
	BRAZIL	4	0	4

		Existing Member(s)	New as of 10/1/2015 or later	Total
IND2	CANADA	101	0	101
	CAYMAN	1	0	1
	CHINA	4	0	4
	COLOMBIA	2	0	2
	COSTA RICA	1	0	1
	CYPRUS	1	0	1
	FINLAND	1	0	1
	FRANCE	1	0	1
	GERMANY	7	0	7
	GREECE	1	0	1
	HONG KONG	5	0	5
	HONG KONG	7	0	7
	INDIA	3	0	3
	IRAQ	1	0	1
	ITALY	4	0	4
	JAPAN	94	1	95
	KAZAKHSTAN	1	0	1
	Korea, Republic	3	0	3
	KOREA,	4	0	4
	KUWAIT	5	0	5
	Lao People's	1	0	1
	MACAO	4	0	4
	MALAYSIA	3	0	3
	MARTINIQUE	1	0	1
	NETHERLAND	1	0	1
	NEW	1	0	1
	NEW ZEALAND	2	0	2
NIGERIA	1	0	1	
NORWAY	1	0	1	
OMAN	1	0	1	
QATAR	15	0	15	

		Existing Member(s)	New as of 10/1/2015 or later	Total
IND2	ROMANIA	1	0	1
	RUSSIAN	1	0	1
	SAUDI ARABIA	11	0	11
	SINGAPORE	3	0	3
	SLOVAKIA	2	0	2
	SOUTH KOREA	5	0	5
	SPAIN	2	0	2
	SWITZERLAND	2	0	2
	TAIWAN	7	0	7
	TAIWAN ROC	2	0	2
	THAILAND	2	0	2
	TRINIDAD AND	1	0	1
	TURKEY	3	0	3
	UKRAINE	1	0	1
	UNITED ARAB	12	0	12
	UNITED	7	0	7
	UNITED	88	7	95
	URUGUAY	2	0	2
	VENEZUELA	1	0	1
	Total	2,108	15	2,123
LIF	United States	41	0	41
	AUSTRALIA	1	0	1
	CANADA	2	0	2
	EGYPT	1	0	1
	ISRAEL	1	0	1
	JAPAN	1	0	1
	UNITED ARAB	1	0	1
	UNITED	2	0	2
	UNITED	1	0	1
	Total	51	0	51
NT	United States	413	11	424

		Existing Member(s)	New as of 10/1/2015 or later	Total
NT	AUSTRALIA	4	0	4
	CANADA	25	1	26
	CHINA	3	0	3
	COLOMBIA	1	0	1
	ECUADOR	1	1	2
	GERMANY	0	1	1
	GREECE	1	0	1
	GUAM	1	0	1
	ITALY	1	0	1
	JAPAN	15	0	15
	KUWAIT	1	0	1
	MALAYSIA	1	0	1
	MARTINIQUE	1	0	1
	MATARA	1	0	1
	NEW ZEALAND	1	0	1
	PERU	2	0	2
	Puerto Rico	1	0	1
	QATAR	2	0	2
	RUSSIA	1	0	1
	SAUDI ARABIA	5	0	5
	SLOVAKIA	1	0	1
	SOUTH KOREA	3	0	3
	SPAIN	1	0	1
	THAILAND	1	0	1
	UNITED	2	0	2
	UNITED	71	5	76
	Total	560	19	579
NT2	United States	337	7	344
	AUSTRALIA	4	0	4
	CANADA	7	0	7
	CHINA	1	0	1

		Existing Member(s)	New as of 10/1/2015 or later	Total
NT2	HONG KONG	2	0	2
	HONG KONG	1	0	1
	HUNGARY	1	0	1
	ITALY	1	0	1
	JAPAN	8	0	8
	KOREA,	2	0	2
	KUWAIT	1	0	1
	MACAO	1	0	1
	SAUDI ARABIA	1	0	1
	SINGAPORE	1	0	1
	SOUTH KOREA	1	0	1
	SWITZERLAND	1	0	1
	TAIWAN	2	0	2
	UNITED	1	0	1
	UNITED	25	2	27
Total	398	9	407	
PTR	United States	338	7	345
	AUSTRALIA	3	0	3
	BRAZIL	4	0	4
	CANADA	26	0	26
	CAYMAN	1	0	1
	CHILE	1	0	1
	CHINA	5	0	5
	CZECH	2	0	2
	DOMINICAN	1	0	1
	ECUADOR	4	0	4
	EGYPT	1	0	1
	GEORGIA	1	0	1
	GERMANY	1	0	1
	GREECE	1	0	1
	HAITI	1	0	1

		Existing Member(s)	New as of 10/1/2015 or later	Total
PTR	IRAQ	1	0	1
	ISRAEL	1	0	1
	JAPAN	8	0	8
	MACAO	1	0	1
	MEXICO	2	0	2
	MOROCCO	1	0	1
	NEPAL	1	0	1
	NEW ZEALAND	1	0	1
	NIGERIA	1	0	1
	NORTHERN	1	0	1
	OMAN	1	0	1
	PAKISTAN	1	0	1
	PANAMA	1	0	1
	PERU	1	0	1
	PHILIPPINES	1	0	1
	Puerto Rico	5	0	5
	QATAR	1	0	1
	SAUDI ARABIA	0	1	1
	SINGAPORE	1	0	1
	SLOVENIA	1	0	1
	SOUTH AFRICA	1	0	1
	SOUTH KOREA	1	0	1
	SPAIN	1	0	1
	TAIWAN	1	0	1
	TAIWAN ROC	1	0	1
	TANZANIA,	1	3	4
	THAILAND	2	0	2
	TURKEY	3	0	3
	UNITED ARAB	2	0	2
	UNITED	3	1	4
United States	2	0	2	

		Existing Member(s)	New as of 10/1/2015 or later	Total
PTR	UNITED	22	2	24
	VENEZUELA	3	0	3
	Total	464	14	478
PTR2	United States	198	0	198
	ARMENIA	1	0	1
	BRAZIL	2	0	2
	CANADA	7	1	8
	CHILE	1	0	1
	CHINA	3	0	3
	COLOMBIA	1	0	1
	CZECH	1	0	1
	HONG KONG	1	0	1
	INDONESIA	2	0	2
	ISRAEL	1	0	1
	ITALY	1	0	1
	JAPAN	4	0	4
	MACAO	1	0	1
	PHILIPPINES	1	0	1
	POLAND	1	0	1
	SAUDI ARABIA	8	1	9
	TAIWAN	5	0	5
	TURKEY	5	0	5
	UNITED ARAB	1	0	1
	UNITED	12	0	12
Total	257	2	259	
RET	United States	132	0	132
	ARGENTINA	1	0	1
	BRAZIL	1	0	1
	CANADA	6	0	6
	COLOMBIA	1	0	1
	GERMANY	1	0	1

		Existing Member(s)	New as of 10/1/2015 or later	Total
RET	JAPAN	3	0	3
	PORTUGAL	1	0	1
	SRI LANKA	1	0	1
	UNITED	5	0	5
	Total	152	0	152
RET2	United States	80	0	80
	AUSTRALIA	1	0	1
	CANADA	1	0	1
	ISRAEL	4	0	4
	ITALY	1	0	1
	JAPAN	4	0	4
	SPAIN	1	0	1
	UNITED	1	0	1
	UNITED	1	0	1
	Total	94	0	94
STU	United States	723	18	741
	AUSTRALIA	8	0	8
	BELGIUM	1	0	1
	BRAZIL	2	0	2
	CANADA	77	0	77
	CHINA	7	0	7
	COLOMBIA	1	0	1
	GERMANY	3	0	3
	GUAM	1	0	1
	HAITI	1	0	1
	HONG KONG	2	0	2
	ITALY	1	0	1
	JAPAN	14	0	14
	Korea, Republic	1	0	1
	MALAYSIA	1	0	1
MEXICO	0	1	1	

		Existing Member(s)	New as of 10/1/2015 or later	Total
STU	NEW ZEALAND	2	0	2
	PHILIPPINES	1	0	1
	POLAND	1	0	1
	PORTUGAL	1	0	1
	RUSSIAN	1	0	1
	SAUDI ARABIA	2	1	3
	SLOVENIA	1	0	1
	SOUTH KOREA	3	0	3
	SPAIN	1	0	1
	THAILAND	24	0	24
	TURKEY	1	0	1
	UNITED ARAB	1	0	1
	UNITED	8	0	8
	United States	1	0	1
	UNITED	71	8	79
	UZBEKISTAN	1	0	1
	Total	963	28	991
STU2	United States	359	9	368
	AUSTRALIA	5	0	5
	BRAZIL	2	0	2
	CANADA	26	0	26
	CHINA	2	0	2
	FRANCE	1	0	1
	GERMANY	1	0	1
	HONG KONG	1	0	1
	INDONESIA	1	0	1
	ISRAEL	2	0	2
	JAPAN	6	0	6
	KOREA,	1	0	1
	LEBANON	1	0	1
	LIBYAN ARAB	1	0	1

		Existing Member(s)	New as of 10/1/2015 or later	Total
STU2	MEXICO	3	0	3
	NEPAL	1	0	1
	NEW ZEALAND	1	0	1
	OMAN	1	0	1
	Puerto Rico	1	0	1
	SINGAPORE	1	0	1
	TAIWAN ROC	1	0	1
	UNITED	5	0	5
	UNITED	18	2	20
	Total	441	11	452
Total	11,308	248	11,556	

This report is based on members paid through 10/31/2015 or later.

Country/State/Province	Total	
02453-2728	1	0.0%
AFGHANISTAN	2	0.0%
ALBANIA	8	0.1%
ALGERIA	4	0.0%
ANGOLA	1	0.0%
ARGENTINA	22	0.2%
ARMENIA	3	0.0%
AUSTRALIA	66	0.6%
AUSTRIA	2	0.0%
AZERBAIJAN	7	0.1%
BAHRAIN	4	0.0%
BANGLADESH	31	0.3%
BARBADOS	1	0.0%
BELARUS	1	0.0%
BELGIUM	1	0.0%
BELIZE	2	0.0%
BENIN	1	0.0%
BERMUDA	1	0.0%
BOLIVIA	11	0.1%
BRAZIL	101	0.9%
BULGARIA	7	0.1%
BURKINA FASO	3	0.0%
CAMBODIA	3	0.0%
CAMEROON	4	0.0%
CANADA		
<i>CANADA</i>	<i>7</i>	
<i>CANADA Alberta</i>	<i>62</i>	
<i>CANADA British Columbia</i>	<i>141</i>	
<i>CANADA California</i>	<i>1</i>	
<i>CANADA Manitoba</i>	<i>17</i>	
<i>CANADA Montana</i>	<i>1</i>	
<i>CANADA New Brunswick</i>	<i>15</i>	
<i>CANADA Newfoundland and Labrador</i>	<i>1</i>	
<i>CANADA Nova Scotia</i>	<i>18</i>	
<i>CANADA Ohio</i>	<i>1</i>	
<i>CANADA Ontario</i>	<i>311</i>	
<i>CANADA Quebec</i>	<i>37</i>	
<i>CANADA Saskatchewan</i>	<i>34</i>	
<i>CANADA Yukon Territory</i>	<i>1</i>	
CANADA	647	5.6%
CAYMAN ISLANDS	2	0.0%
CHILE	17	0.1%
CHINA	225	1.9%
COLOMBIA	31	0.3%
COSTA RICA	19	0.2%
CROATIA	5	0.0%
CUBA	1	0.0%
CYPRUS	2	0.0%
CZECH REPUBLIC	7	0.1%
DENMARK	3	0.0%
DOMINICAN REPUBLIC	14	0.1%
ECUADOR	101	0.9%
EGYPT	28	0.2%
FINLAND	2	0.0%
FRANCE	6	0.1%
GABON	2	0.0%
GEORGIA	5	0.0%

GERMANY	20	0.2%
GHANA	1	0.0%
GREECE	6	0.1%
GRENADA	3	0.0%
GUAM	2	0.0%
GUATEMALA	9	0.1%
HAITI	19	0.2%
HONDURAS	4	0.0%
HONG KONG	22	0.2%
HONG KONG SAR CHINA	16	0.1%
HUNGARY	3	0.0%
ICELAND	1	0.0%
INDIA	80	0.7%
INDONESIA	11	0.1%
IRAN	5	0.0%
IRAQ	6	0.1%
IRELAND	2	0.0%
ISRAEL	13	0.1%
ITALY	17	0.1%
JAMAICA	2	0.0%
JAPAN	378	3.3%
JORDAN	7	0.1%
KAZAKHSTAN	3	0.0%
KENYA	1	0.0%
Korea, Dem People's Rep	1	0.0%
Korea, Republic Of	9	0.1%
KOREA, REPUBLIC OF	10	0.1%
KOSOVO (UNMIK)	3	0.0%
KUWAIT	11	0.1%
KYRGYZSTAN	2	0.0%
Lao People's Dem Republic	1	0.0%
LATVIA	1	0.0%
LEBANON	8	0.1%
LIBYAN ARAB JAMAHIRIYA	1	0.0%
LITHUANIA	1	0.0%
MACAO	9	0.1%
MADAGASCAR	5	0.0%
MALAYSIA	29	0.3%
MALI	1	0.0%
MARSHALL ISLANDS	1	0.0%
MARTINIQUE	2	0.0%
MATARA	1	0.0%
MAURITANIA	10	0.1%
MAURITIUS	1	0.0%
MEXICO	100	0.9%
MOLDOVA, REPUBLIC OF	3	0.0%
MONGOLIA	29	0.3%
MOROCCO	29	0.3%
MOZAMBIQUE	1	0.0%
MYANMAR	2	0.0%
NAMIBIA	1	0.0%
NEPAL	15	0.1%
NETHERLANDS	4	0.0%
NEW CALEDONIA	1	0.0%
NEW ZEALAND	15	0.1%
NICARAGUA	2	0.0%
NIGER	1	0.0%
NIGERIA	22	0.2%
NORTHERN MARIANA ISLANDS	1	0.0%
NORWAY	5	0.0%
OMAN	6	0.1%

PAKISTAN	26	0.2%
PALESTINIAN TERRITORY	3	0.0%
PANAMA	19	0.2%
PARAGUAY	2	0.0%
PEOPLES REP OF CHINA	8	0.1%
PERU	65	0.6%
PHILIPPINES	26	0.2%
POLAND	12	0.1%
PORTUGAL	3	0.0%
Puerto Rico	17	0.1%
OATAR	34	0.3%
ROMANIA	1	0.0%
RUSSIA	9	0.1%
RUSSIAN FEDERATION	12	0.1%
RWANDA	2	0.0%
SAUDI ARABIA	44	0.4%
SENEGAL	1	0.0%
SERBIA	2	0.0%
SIERRA LEONE	1	0.0%
SINGAPORE	11	0.1%
SLOVAKIA	4	0.0%
SLOVENIA	2	0.0%
SOUTH AFRICA	6	0.1%
SOUTH KOREA	23	0.2%
SPAIN	10	0.1%
SRI LANKA	2	0.0%
SUDAN	2	0.0%
SURINAME	1	0.0%
SWAZILAND	1	0.0%
SWEDEN	7	0.1%
SWITZERLAND	4	0.0%
SYRIAN ARAB REPUBLIC	2	0.0%
TAIWAN	24	0.2%
TAIWAN ROC	14	0.1%
TAJKISTAN	2	0.0%
TANZANIA, UNITED REPUBLIC	5	0.0%
THAILAND	62	0.5%
TRINIDAD AND TOBAGO	2	0.0%
TUNISIA	6	0.1%
TURKEY	56	0.5%
UGANDA	1	0.0%
UKRAINE	7	0.1%
UNITED ARAB EMIRATES	51	0.4%
UNITED KINGDOM	45	0.4%
United States	24	0.2%
UNITED STATES OF AMERICA	594	5.1%
URUGUAY	11	0.1%
USA		
<i>USA</i>	<i>44</i>	
<i>USA</i>	<i>Alabama</i>	<i>68</i>
<i>USA</i>	<i>Alaska</i>	<i>12</i>
<i>USA</i>	<i>American Embassy</i>	<i>7</i>
<i>USA</i>	<i>Arizona</i>	<i>169</i>
<i>USA</i>	<i>Arkansas</i>	<i>72</i>
<i>USA</i>	<i>Armed Forces</i>	<i>6</i>
<i>USA</i>	<i>Armed Frces Americas</i>	<i>2</i>
<i>USA</i>	<i>California</i>	<i>743</i>
<i>USA</i>	<i>Colorado</i>	<i>145</i>
<i>USA</i>	<i>Connecticut</i>	<i>124</i>
<i>USA</i>	<i>Delaware</i>	<i>51</i>
<i>USA</i>	<i>District of Columbia</i>	<i>118</i>

USA	Florida	285	
USA	Georgia	151	
USA	Guam	2	
USA	Hawaii	67	
USA	Idaho	53	
USA	Illinois	333	
USA	Indiana	157	
USA	Iowa	94	
USA	Kansas	106	
USA	Kentucky	60	
USA	Louisiana	30	
USA	Maine	38	
USA	Maryland	249	
USA	Massachusetts	326	
USA	Michigan	262	
USA	Minnesota	129	
USA	Mississippi	58	
USA	Missouri	175	
USA	Montana	14	
USA	Nebraska	42	
USA	Nevada	40	
USA	New Hampshire	65	
USA	New Jersey	239	
USA	New Mexico	49	
USA	New York	634	
USA	North Carolina	144	
USA	North Dakota	17	
USA	Ohio	272	
USA	Oklahoma	61	
USA	Ontario	2	
USA	Oregon	248	
USA	Pennsylvania	317	
USA	Puerto Rico	19	
USA	Quebec	1	
USA	Rhode Island	44	
USA	South Carolina	39	
USA	South Dakota	7	
USA	Tennessee	76	
USA	Texas	387	
USA	Utah	82	
USA	Vermont	63	
USA	Virginia	375	
USA	Washington	309	
USA	West Virginia	27	
USA	Wisconsin	135	
USA	Wyoming	11	
USA		7,855	68.0%
UZBEKISTAN		21	0.2%
VANUATU		1	0.0%
VENEZUELA		19	0.2%
VIET NAM		4	0.0%
VIETNAM		9	0.1%
YEMEN		2	0.0%
Grand Total:		11,556	

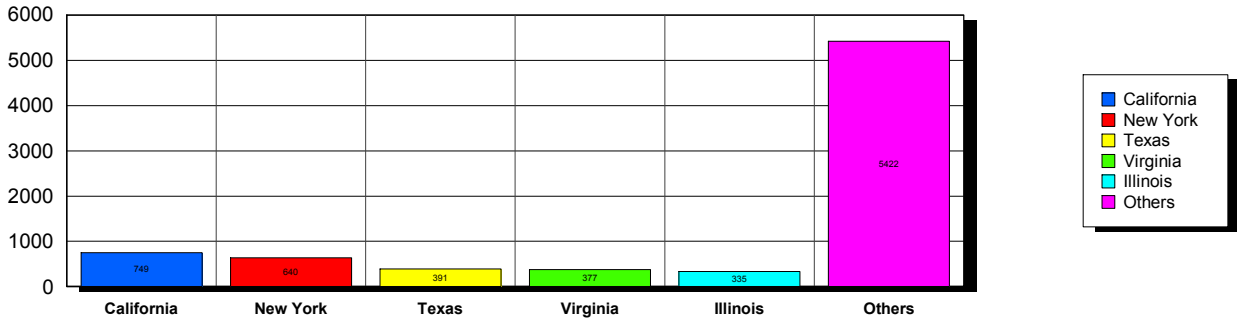
157 distinct countries represented.

11/17/2015

Membership counts by country for members paid through 10/31/2015 or later.

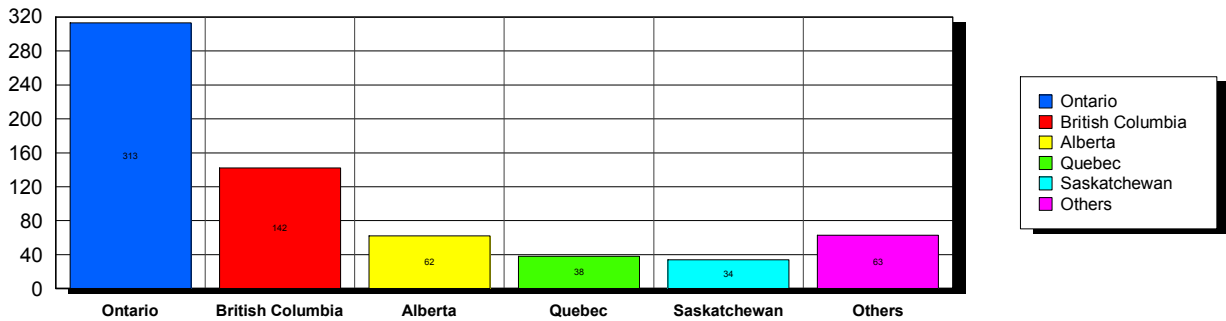
USA

Top 5 States per Country

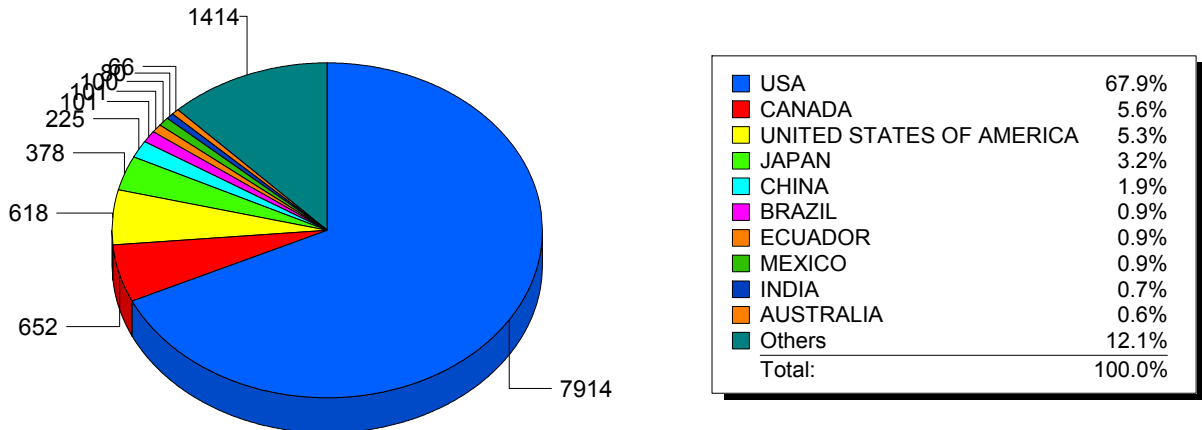


CANADA

Top 5 States per Country



Top 10 Countries



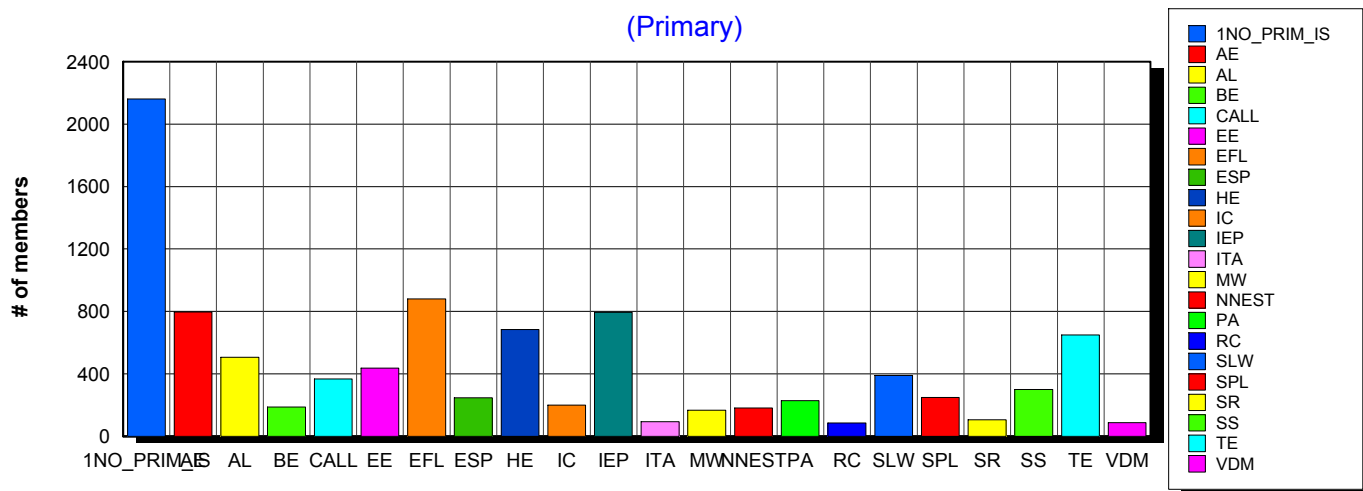
11/17/2015 **Basic statistics on Primary vs. other memberships in interest sections. For members paid through 10/31/2015 or later.**

		<i>Primary versus other</i>		
No Primary Interest Section	6.6%	2,174	2,162	12
Adult Education	6.2%	2,058	797	1,261
Applied Linguistics	5.9%	1,950	507	1,443
Bilingual Education	3.1%	1,024	187	837
Computer-Assisted Language Learning	5.2%	1,719	366	1,353
Elementary Education	3.1%	1,036	437	599
English as a Foreign Language	7.1%	2,337	880	1,457
English for Specific Purposes	4.5%	1,488	247	1,241
Higher Education	6.4%	2,108	684	1,424
Intercultural Communication	4.8%	1,607	200	1,407
Intensive English Programs	6.4%	2,113	794	1,319
International Teaching Assistants	2.0%	651	93	558
Materials Writers	3.4%	1,132	166	966
Nonnative English Speakers in TESOL	2.9%	954	182	772
Program Administration	3.5%	1,144	228	916
Refugee Concerns	2.1%	696	85	611
Second Language Writing	6.2%	2,042	389	1,653
Speech, Pronunciation, and Listening	5.3%	1,749	249	1,500
Social Responsibility	2.1%	701	105	596
Secondary Schools	2.7%	907	300	607
Teacher Education	7.2%	2,395	649	1,746
Video & Digital Media	3.5%	1,157	86	1,071
<i>9,824 distinct members</i>		Total # of IS memberships	33,142	9,793 23,349

The total count is the number of IS memberships total and may either be LESS or MORE than the actual number of individual members of TESOL. Due to open access to Interest Sections, these numbers may fluctuate considerably each month. For instance, one member may have selected four interest sections, while some members may belong to none.

Interest Sections

(Primary)

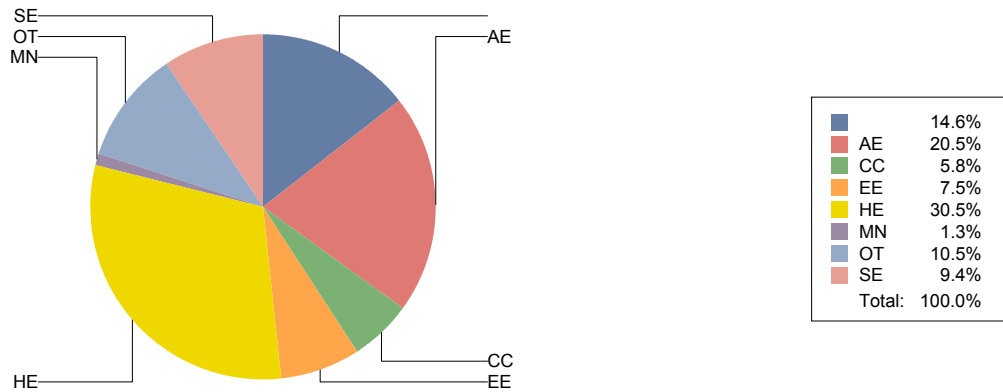


Basic Statistics on Area of Work (Members paid through >= 10/31/2015)

		1,665	14.6%
Adult Education	AE	2,341	20.5%
Community/2yr College	CC	669	5.8%
Elementary Education	EE	859	7.5%
Postsecondary Education	HE	3,487	30.5%
Mainstream	MN	143	1.3%
Other	OT	1,196	10.5%
Secondary Education	SE	1,078	9.4%
		11,438	

Only members who selected an area of work are included on this report. Other members may not have responded to this question and are excluded from the count.

Areas of Work



(Blanks indicate no response)

Statistics on Areas of Interest (Members paid through >= 10/31/2015)

<u>CODE</u>	<u>DESCRIPTION</u>	<u>TOTAL*</u>	<u>% of TOTAL*</u>
TE	Teacher education	1,711	5%
CURRICULUM	Materials development/Curriculum	1,669	4%
EFL	English as a foreign language	1,595	4%
SLA	Second language acquisition	1,560	4%
AL	Applied linguistics	1,500	4%
HE	Higher education	1,439	4%
WRITING	Writing/composition	1,437	4%
IEP	Intensive English programs	1,413	4%
IC	Multiculturalism/intercultural communications	1,405	4%
CALL	Technology in education	1,399	4%
AE	Adult education	1,352	4%
PROFDEV	Professional development	1,281	3%
CONTENT	Content-based instruction	1,241	3%
SP	Speaking/pronunciation	1,153	3%
READING	Reading/literacy	1,144	3%
GRAMMAR	Grammar	1,098	3%
ASSESS	Assessment/testing	1,075	3%
ESP	English for specific purposes	1,019	3%
RS	Research	963	3%
PA	Program administration	771	2%
DISTANCE	Distance learning/Online Education	758	2%
VOCAB	Vocabulary/Lexicon	745	2%
BE	Bilingual education	728	2%
SOCIAL	Social/global/political concerns	638	2%
ISKILL	Integrated Skills	637	2%
WORKPLACE	Workplace English instruction/Business English	628	2%
LISTEN	Listening	623	2%
VI	Video and digital media	590	2%
EE	Elementary/primary education	582	2%
SS	Secondary education	555	1%
COMMCOLL	Community college/technical ed	496	1%
RC	Refugee concerns	425	1%
STANDARDS	Standards	420	1%
LINGUISTICS	Theoretical Linguistics	419	1%
ITA	International teaching assistants	397	1%
LIT	Literature	382	1%
FAMILY	Community/family outreach	321	1%
EMPLOYMENT	Employment issues/Certification	301	1%
NNES	NNES/NES issues	298	1%
ACCRED	Accreditation	258	1%
PUBLICPOLICY	Public policy	257	1%
LDSN	Learning Disorders/Special Needs	249	1%
MAINSTREAMING	Mainstreaming	233	1%
ARTS	Arts/Media/Science/Math/Social Science	172	0%
STYLISTICS	Stylistics	79	0%

Sorted in order of prevalence.

** Note: Members are encouraged to choose multiple areas of interest and some members do not choose any areas of interest. The total number of distinct members (4,731) represented in this report is less than the total number of active members as indicated elsewhere in this report.*

Areas of interest are separate from official TESOL interest sections. Areas of interest represent distinct areas in which a member may be interested, rather than official entities in which a member is involved.

Areas of interest which have a very low count may be recent additions to the AOI list, or may reflect overall trends in membership.

Statistics on Areas of Expertise (Members paid through >= 10/31/2015)

<u>CODE</u>	<u>DESCRIPTION</u>	<u>TOTAL*</u>	<u>% of TOTAL*</u>
EFL	English as a foreign language	1,039	6%
CURRICULUM	Materials development/Curriculum	938	5%
AE	Adult education	870	5%
WRITING	Writing/composition	860	5%
IEP	Intensive English programs	845	5%
AL	Applied linguistics	786	5%
TE	Teacher education	786	5%
HE	Higher education	747	4%
SLA	Second language acquisition	676	4%
CONTENT	Content-based instruction	637	4%
GRAMMAR	Grammar	612	4%
IC	Multiculturalism/intercultural communications	553	3%
CALL	Technology in education	523	3%
ESP	English for specific purposes	504	3%
PROFDEV	Professional development	498	3%
SP	Speaking/pronunciation	483	3%
READING	Reading/literacy	468	3%
PA	Program administration	437	3%
ASSESS	Assessment/testing	434	2%
ISKILL	Integrated Skills	373	2%
EE	Elementary/primary education	370	2%
DISTANCE	Distance learning/Online Education	319	2%
COMMCOLL	Community college/technical ed	294	2%
RS	Research	285	2%
SS	Secondary education	284	2%
BE	Bilingual education	279	2%
WORKPLACE	Workplace English instruction/Business English	273	2%
LISTEN	Listening	265	2%
VOCAB	Vocabulary/Lexicon	232	1%
LIT	Literature	197	1%
SOCIAL	Social/global/political concerns	171	1%
VI	Video and digital media	151	1%
ITA	International teaching assistants	136	1%
NNES	NNES/NES issues	132	1%
ACCRED	Accreditation	129	1%
FAMILY	Community/family outreach	104	1%
STANDARDS	Standards	99	1%
MAINSTREAMING	Mainstreaming	97	1%
LINGUISTICS	Theoretical Linguistics	94	1%
RC	Refugee concerns	94	1%
ARTS	Arts/Media/Science/Math/Social Science	87	1%
EMPLOYMENT	Employment issues/Certification	77	0%
LDSN	Learning Disorders/Special Needs	75	0%
PUBLICPOLICY	Public policy	54	0%
STYLISTICS	Stylistics	20	0%

Sorted in order of prevalence.

** Note: Members are encouraged to choose multiple areas of expertise and some members do not choose any areas of expertise. The total number of distinct members (3,775) represented in this report is less than the total number of active members as indicated elsewhere in this report.*

Areas of Expertise are separate from official TESOL interest sections or Areas of Interest. Areas of expertise represent distinct areas in which a member may be experienced in, rather than official entities in which a member is involved.

Areas of interest which have a very low count may be recent additions to the AOI list, or may reflect overall trends in membership.