

10/9/2014

Membership Statistics: Grand totals for basic membership, by member type and country

		<u># Memberships</u>	<u># Members</u>
IND	BASIC		
	Existing Member(s)	5,080	5,080
	New as of 9/1/2014 or later	103	103
IND	BASIC	5,183	5,183

IND2	BASIC		
	Existing Member(s)	2,029	2,029
	New as of 9/1/2014 or later	19	19
IND2	BASIC	2,048	2,048

STU	BASIC		
	Existing Member(s)	1,000	1,000
	New as of 9/1/2014 or later	64	64
STU	BASIC	1,064	1,064

STU2	BASIC		
	Existing Member(s)	441	441
	New as of 9/1/2014 or later	21	21
STU2	BASIC	462	462

LIF	BASIC		
	Existing Member(s)	50	50
LIF	BASIC	50	50

RET	BASIC		
	Existing Member(s)	144	144
RET	BASIC	144	144

RET2	BASIC		
	Existing Member(s)	92	92
RET2	BASIC	92	92

PTR	BASIC		
	Existing Member(s)	545	545
	New as of 9/1/2014 or later	9	9
PTR	BASIC	554	554

PTR2	BASIC		
	Existing Member(s)	224	224
PTR2	BASIC	224	224

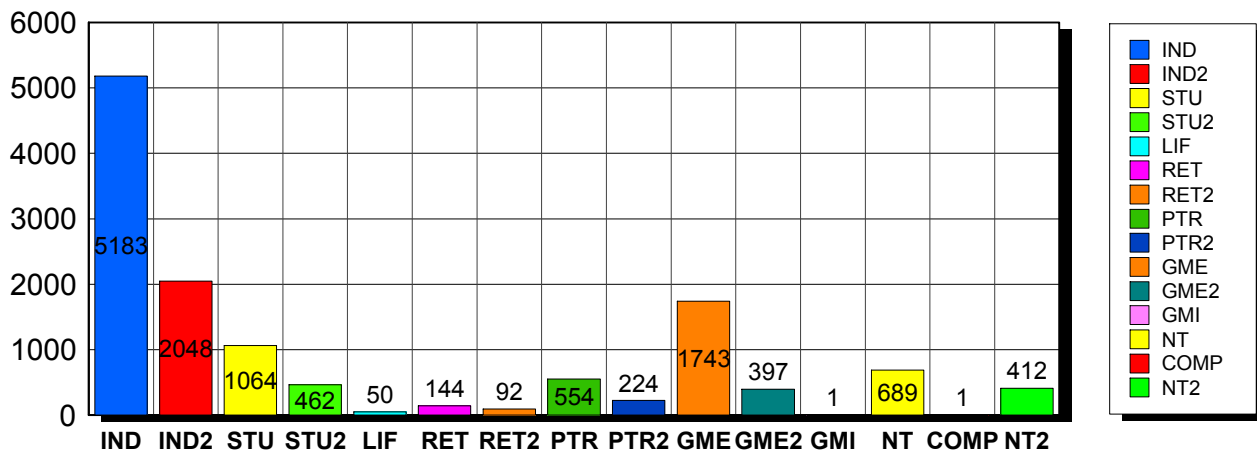
GME	BASIC		
	Existing Member(s)	1,716	1,716
	New as of 9/1/2014 or later	27	27
GME	BASIC	1,743	1,743

GME2	BASIC		
	Existing Member(s)	387	387
	New as of 9/1/2014 or later	10	10
GME2	BASIC	397	397

GMI	BASIC		
	Existing Member(s)	1	1

GMI	BASIC	1	1
NT	BASIC		
	Existing Member(s)	652	652
	New as of 9/1/2014 or later	37	37
NT	BASIC	689	689
COMP	BASIC		
	Existing Member(s)	1	1
COMP	BASIC	1	1
NT2	BASIC		
	Existing Member(s)	408	408
	New as of 9/1/2014 or later	4	4
NT2	BASIC	412	412
Grand Total:		13,064	13,064

Member Types



Note: in all general statistic reports, joint household memberships are treated as "one" member EXCEPT in the second column of this report, where joints are counted as two people, providing the most accurate count of the number of TESOL members.

		Existing Member(s)	New as of 9/1/2014 or later	Total
COMP	United States	1	0	1
	Total	1	0	1
GME	United States	85	1	86
	ALBANIA	4	0	4
	ALGERIA	2	1	3
	ANGOLA	1	0	1
	ARGENTINA	18	0	18
	ARMENIA	1	0	1

		Existing Member(s)	New as of 9/1/2014 or later	Total
GME	AZERBAIJAN	2	2	4
	BANGLADESH	3	0	3
	BARBADOS	3	0	3
	BELARUS	2	0	2
	BOLIVIA	5	0	5
	BOSNIA AND	1	0	1
	BRAZIL	135	1	136
	BULGARIA	1	1	2
	BURKINA FASO	3	0	3
	CAMBODIA	1	0	1
	CAMEROON	4	0	4
	CANADA	1	0	1
	CHILE	7	0	7
	CHINA	488	5	493
	COLOMBIA	20	0	20
	COSTA RICA	19	0	19
	Cote d'Ivoire	1	0	1
	CROATIA	2	0	2
	CUBA	1	0	1
	DOMINICAN	8	0	8
	ECUADOR	25	1	26
	EGYPT	315	0	315
	EL SALVADOR	23	0	23
	ETHIOPIA	1	0	1
	GEORGIA	8	0	8
	GHANA	1	0	1
	GRENADA	2	0	2
	GUATEMALA	15	0	15
	HAITI	14	2	16
	HONDURAS	5	0	5
HONG KONG	1	0	1	

		Existing Member(s)	New as of 9/1/2014 or later	Total
GME	INDIA	46	0	46
	INDONESIA	9	0	9
	IRAN	4	0	4
	IRAQ	9	0	9
	ISRAEL	1	0	1
	JAMAICA	3	0	3
	JAPAN	1	0	1
	JORDAN	1	0	1
	KAZAKHSTAN	2	1	3
	KOSOVO	1	0	1
	KUWAIT	1	0	1
	KYRGYZSTAN	2	0	2
	LEBANON	3	0	3
	LIBERIA	1	0	1
	MACAO	2	0	2
	MACEDONIA	3	0	3
	MADAGASCAR	6	0	6
	MALAYSIA	8	0	8
	MALI	1	1	2
	MAURITANIA	3	0	3
	MEXICO	61	1	62
	MOLDOVA,	4	0	4
	MONGOLIA	9	0	9
	MOROCCO	25	0	25
	MOZAMBIQUE	1	0	1
	NEPAL	7	1	8
	NICARAGUA	4	0	4
	NIGER	2	0	2
	NIGERIA	9	0	9
	PAKISTAN	9	0	9
PALESTINIAN	1	0	1	

		Existing Member(s)	New as of 9/1/2014 or later	Total
GME	PANAMA	14	0	14
	PARAGUAY	1	0	1
	PEOPLES REP	6	0	6
	PERU	78	3	81
	PHILIPPINES	13	0	13
	POLAND	2	0	2
	QATAR	1	0	1
	ROMANIA	3	0	3
	RUSSIA	13	0	13
	RUSSIAN	5	0	5
	RWANDA	1	0	1
	SAUDI ARABIA	2	0	2
	SENEGAL	4	0	4
	SOUTH AFRICA	4	0	4
	SOUTH KOREA	1	0	1
	SRI LANKA	1	0	1
	SWAZILAND	1	0	1
	TAIWAN ROC	8	0	8
	TAJIKISTAN	2	0	2
	TANZANIA,	1	0	1
	THAILAND	13	0	13
	TRINIDAD AND	1	0	1
	TUNISIA	11	5	16
	TURKEY	19	0	19
	UKRAINE	1	0	1
	UNITED ARAB	2	0	2
	UNITED	3	0	3
	URUGUAY	8	0	8
	UZBEKISTAN	4	0	4
	VANUATU	1	0	1
VENEZUELA	15	0	15	

		Existing Member(s)	New as of 9/1/2014 or later	Total
GME	VIET NAM	2	0	2
	VIETNAM	3	1	4
	YEMEN	4	0	4
	ZIMBABWE	1	0	1
	Total	1,716	27	1,743
GME2	United States	6	1	7
	AFGHANISTAN	3	0	3
	ALBANIA	9	0	9
	ALGERIA	1	0	1
	ARGENTINA	6	0	6
	ARMENIA	2	0	2
	AZERBAIJAN	1	0	1
	BANGLADESH	2	0	2
	BELARUS	1	0	1
	BENIN	3	0	3
	BOLIVIA	2	0	2
	BRAZIL	57	1	58
	BURKINA FASO	2	0	2
	CAMEROON	1	0	1
	CHILE	3	0	3
	CHINA	40	1	41
	COLOMBIA	9	0	9
	COSTA RICA	6	0	6
	DOMINICAN	2	1	3
	ECUADOR	11	0	11
	EGYPT	6	0	6
	EL SALVADOR	1	0	1
	ETHIOPIA	2	0	2
	GAMBIA	1	0	1
GEORGIA	1	0	1	
GERMANY	1	0	1	

		Existing Member(s)	New as of 9/1/2014 or later	Total
GME2	GRENADA	1	0	1
	GUINEA	2	0	2
	HONG KONG	1	0	1
	INDIA	17	0	17
	INDONESIA	4	0	4
	IRAN	1	0	1
	IRAQ	2	0	2
	JORDAN	2	0	2
	KAZAKHSTAN	1	0	1
	KENYA	1	0	1
	Korea, Republic	1	0	1
	KOSOVO	1	0	1
	LATVIA	1	0	1
	LEBANON	4	0	4
	LESOTHO	2	0	2
	LIBERIA	1	0	1
	LITHUANIA	1	0	1
	MADAGASCAR	2	0	2
	MALAWI	2	0	2
	MALAYSIA	6	0	6
	MALDIVES	1	0	1
	MALI	1	0	1
	MARSHALL	1	0	1
	MAURITIUS	1	0	1
	MEXICO	32	1	33
	MICRONESIA,	2	0	2
	MONGOLIA	2	0	2
	MOROCCO	2	0	2
	MOZAMBIQUE	2	0	2
	NAMIBIA	2	0	2
NIGERIA	3	0	3	

		Existing Member(s)	New as of 9/1/2014 or later	Total
GME2	PAKISTAN	4	1	5
	PALESTINIAN	1	0	1
	PANAMA	7	0	7
	PARAGUAY	1	0	1
	PEOPLES REP	1	0	1
	PERU	4	0	4
	PHILIPPINES	8	0	8
	POLAND	4	0	4
	RUSSIA	4	0	4
	RUSSIAN	3	0	3
	RWANDA	2	0	2
	SENEGAL	1	0	1
	SIERRA LEONE	2	0	2
	SOUTH AFRICA	1	0	1
	SURINAME	1	0	1
	SWAZILAND	1	0	1
	SYRIAN ARAB	1	0	1
	TAIWAN ROC	3	0	3
	TAJIKISTAN	0	2	2
	TANZANIA,	1	0	1
	THAILAND	15	2	17
	TOGO	1	0	1
	TUNISIA	2	0	2
	TURKEY	20	0	20
	UGANDA	2	0	2
	URUGUAY	1	0	1
	VANUATU	1	0	1
VENEZUELA	2	0	2	
VIET NAM	1	0	1	
VIETNAM	7	0	7	
YEMEN	1	0	1	

		Existing Member(s)	New as of 9/1/2014 or later	Total
GME2	ZAMBIA	3	0	3
	Total	387	10	397
GMI	CHILE	1	0	1
	Total	1	0	1
IND	United States	4,345	82	4,427
	AFGHANISTAN	1	0	1
	ANGOLA	1	0	1
	AUSTRALIA	16	1	17
	AUSTRIA	1	0	1
	BAHRAIN	2	0	2
	BELGIUM	2	0	2
	BERMUDA	1	0	1
	BRAZIL	9	2	11
	CANADA	187	8	195
	CHILE	3	0	3
	CHINA	4	0	4
	COLOMBIA	1	1	2
	COSTA RICA	2	0	2
	CYPRUS	2	0	2
	CZECH	4	0	4
	DENMARK	1	0	1
	FRANCE	4	0	4
	GERMANY	10	0	10
	GREECE	5	0	5
	GUAM	1	0	1
	HONG KONG	2	0	2
	HONG KONG	2	0	2
	HUNGARY	1	0	1
	ICELAND	1	0	1
	INDIA	2	0	2
IRAN, ISLAMIC	1	0	1	

		Existing Member(s)	New as of 9/1/2014 or later	Total
IND	IRELAND	2	0	2
	ISRAEL	6	0	6
	ITALY	8	0	8
	JAPAN	254	0	254
	Korea, Republic	8	0	8
	KOREA,	7	1	8
	KUWAIT	6	0	6
	LUXEMBOURG	1	0	1
	MACAO	2	0	2
	MALAYSIA	1	4	5
	MARSHALL	1	0	1
	MEXICO	16	1	17
	MOLDOVA,	1	0	1
	NEPAL	1	0	1
	NETHERLAND	1	0	1
	NEW ZEALAND	9	0	9
	NIGERIA	1	0	1
	NORWAY	2	0	2
	OMAN	6	0	6
	PERU	1	0	1
	PORTUGAL	1	0	1
	QATAR	18	0	18
	RUSSIAN	1	0	1
	SAUDI ARABIA	21	2	23
	SINGAPORE	4	0	4
	SOUTH KOREA	13	1	14
	SPAIN	5	0	5
	SWEDEN	4	0	4
	TAIWAN	3	0	3
	TAIWAN ROC	6	0	6
THAILAND	4	0	4	

		Existing Member(s)	New as of 9/1/2014 or later	Total
IND	TURKEY	1	0	1
	UGANDA	1	0	1
	UNITED ARAB	22	0	22
	UNITED	21	0	21
	URUGUAY	1	0	1
	US MINOR	4	0	4
	VIET NAM	1	0	1
	VIETNAM	3	0	3
	YEMEN	1	0	1
	Total	5,080	103	5,183
IND2	United States	1,651	14	1,665
	AFGHANISTAN	1	0	1
	AUSTRALIA	16	0	16
	AUSTRIA	2	0	2
	BAHRAIN	2	0	2
	BOLIVIA	1	0	1
	BOSNIA AND	1	0	1
	BRAZIL	3	1	4
	CANADA	92	1	93
	CHINA	1	0	1
	COLOMBIA	1	0	1
	CYPRUS	1	0	1
	CZECH	1	0	1
	DENMARK	1	0	1
	ECUADOR	1	0	1
	FINLAND	1	0	1
	FRANCE	1	0	1
	GERMANY	6	0	6
	GREECE	1	0	1
	HONG KONG	5	1	6
HONG KONG	7	0	7	

		Existing Member(s)	New as of 9/1/2014 or later	Total
IND2	INDIA	2	0	2
	IRAQ	1	0	1
	ISRAEL	4	0	4
	ITALY	3	0	3
	JAPAN	102	0	102
	KAZAKHSTAN	1	0	1
	Korea, Republic	3	0	3
	KOREA,	3	0	3
	KUWAIT	7	0	7
	LEBANON	1	0	1
	MACAO	4	0	4
	MALAYSIA	1	0	1
	MARTINIQUE	1	0	1
	MEXICO	1	0	1
	NETHERLAND	1	0	1
	NEW	1	0	1
	NEW ZEALAND	4	0	4
	NIGERIA	2	0	2
	NORWAY	1	0	1
	OMAN	0	1	1
	QATAR	16	0	16
	ROMANIA	1	0	1
	RUSSIAN	1	0	1
	SAUDI ARABIA	14	0	14
	SINGAPORE	3	0	3
	SLOVAKIA	2	0	2
	SOUTH KOREA	8	0	8
	SPAIN	3	0	3
	SWEDEN	1	0	1
	SWITZERLAND	4	0	4
TAIWAN	6	0	6	

		Existing Member(s)	New as of 9/1/2014 or later	Total
IND2	TAIWAN ROC	1	0	1
	THAILAND	2	0	2
	TURKEY	3	0	3
	UNITED ARAB	15	0	15
	UNITED	7	0	7
	US MINOR	0	1	1
	VENEZUELA	2	0	2
	Virgin Islands,	1	0	1
	Total	2,029	19	2,048
LIF	United States	41	0	41
	AUSTRALIA	1	0	1
	CANADA	2	0	2
	EGYPT	1	0	1
	ISRAEL	1	0	1
	JAPAN	1	0	1
	UNITED ARAB	1	0	1
	UNITED	2	0	2
	Total	50	0	50
NT	United States	599	33	632
	AUSTRALIA	3	0	3
	BRAZIL	1	0	1
	BURUNDI	1	0	1
	CANADA	14	1	15
	COLOMBIA	1	0	1
	COSTA RICA	1	0	1
	FRANCE	1	0	1
	GERMANY	1	0	1
	GREECE	1	0	1
	INDIA	1	0	1
	ISRAEL	2	0	2
	ITALY	1	0	1

		Existing Member(s)	New as of 9/1/2014 or later	Total
NT	JAPAN	6	1	7
	Korea, Republic	1	0	1
	MEXICO	1	0	1
	NEW ZEALAND	1	0	1
	OMAN	1	0	1
	PANAMA	1	0	1
	QATAR	1	0	1
	RUSSIA	0	1	1
	SAUDI ARABIA	8	0	8
	SOUTH KOREA	2	0	2
	TURKEY	1	0	1
	UNITED	2	1	3
	Total	652	37	689
NT2	United States	366	4	370
	AUSTRALIA	7	0	7
	CANADA	4	0	4
	CHINA	2	0	2
	GERMANY	3	0	3
	HONG KONG	3	0	3
	JAPAN	6	0	6
	KOREA,	4	0	4
	KUWAIT	2	0	2
	MACAO	1	0	1
	MOROCCO	1	0	1
	NORWAY	1	0	1
	SAUDI ARABIA	1	0	1
	SOUTH KOREA	2	0	2
	SWITZERLAND	1	0	1
	TAIWAN	2	0	2
	TURKEY	1	0	1
UNITED ARAB	1	0	1	

		Existing Member(s)	New as of 9/1/2014 or later	Total
NT2	Total	408	4	412
PTR	United States	457	8	465
	AUSTRALIA	4	0	4
	BRAZIL	1	0	1
	CANADA	13	0	13
	CHINA	1	0	1
	COLOMBIA	3	0	3
	COSTA RICA	3	0	3
	CUBA	1	0	1
	DOMINICAN	1	0	1
	ECUADOR	4	0	4
	GERMANY	2	0	2
	HONG KONG	1	0	1
	INDIA	1	0	1
	INDONESIA	1	0	1
	IRELAND	1	0	1
	ISRAEL	1	0	1
	JAPAN	11	1	12
	KOREA,	2	0	2
	MEXICO	5	0	5
	MONGOLIA	1	0	1
	NEPAL	1	0	1
	NEW ZEALAND	1	0	1
	OMAN	1	0	1
	PANAMA	1	0	1
	PERU	3	0	3
	PHILIPPINES	1	0	1
	Puerto Rico	1	0	1
SAUDI ARABIA	3	0	3	
SLOVENIA	1	0	1	
SOUTH AFRICA	1	0	1	

		Existing Member(s)	New as of 9/1/2014 or later	Total
PTR	SOUTH KOREA	1	0	1
	TAIWAN	2	0	2
	THAILAND	1	0	1
	TURKEY	2	0	2
	UKRAINE	1	0	1
	UNITED ARAB	1	0	1
	UNITED	6	0	6
	VENEZUELA	1	0	1
	VIET NAM	1	0	1
	VIETNAM	1	0	1
	Total	545	9	554
PTR2	United States	176	0	176
	ARGENTINA	1	0	1
	ARMENIA	1	0	1
	AUSTRALIA	1	0	1
	CANADA	7	0	7
	CHILE	1	0	1
	CHINA	1	0	1
	COLOMBIA	2	0	2
	CZECH	1	0	1
	GERMANY	1	0	1
	GREECE	2	0	2
	INDIA	1	0	1
	INDONESIA	1	0	1
	ISRAEL	1	0	1
	JAPAN	8	0	8
	MACAO	1	0	1
	MEXICO	3	0	3
	PAKISTAN	1	0	1
	POLAND	1	0	1
	QATAR	1	0	1

		Existing Member(s)	New as of 9/1/2014 or later	Total
PTR2	SAUDI ARABIA	6	0	6
	TAIWAN	2	0	2
	THAILAND	1	0	1
	TURKEY	3	0	3
	Total	224	0	224
RET	United States	132	0	132
	BRAZIL	1	0	1
	CANADA	1	0	1
	COLOMBIA	1	0	1
	GERMANY	2	0	2
	HONG KONG	1	0	1
	ISRAEL	2	0	2
	JAPAN	1	0	1
	PORTUGAL	1	0	1
	SWEDEN	1	0	1
	UNITED	1	0	1
	Total	144	0	144
RET2	United States	83	0	83
	AUSTRALIA	1	0	1
	CANADA	1	0	1
	ISRAEL	2	0	2
	ITALY	1	0	1
	JAPAN	3	0	3
	SPAIN	1	0	1
	Total	92	0	92
STU	United States	858	60	918
	AMERICAN	1	0	1
	AUSTRALIA	8	0	8
	BRAZIL	1	0	1
	CAMBODIA	1	0	1
	CANADA	33	0	33

		Existing Member(s)	New as of 9/1/2014 or later	Total
STU	CHINA	3	2	5
	COSTA RICA	1	0	1
	ECUADOR	1	0	1
	FRANCE	0	1	1
	GERMANY	3	0	3
	GUATEMALA	1	0	1
	INDIA	1	0	1
	IRAQ	1	0	1
	ITALY	1	0	1
	JAPAN	17	0	17
	Korea, Republic	2	0	2
	KOREA,	1	0	1
	KUWAIT	1	0	1
	MEXICO	14	0	14
	NEW ZEALAND	1	0	1
	PHILIPPINES	1	0	1
	SAUDI ARABIA	2	0	2
	SCOTLAND	1	0	1
	SOUTH KOREA	4	1	5
	SRI LANKA	1	0	1
	THAILAND	24	0	24
	TUNISIA	2	0	2
	TURKEY	9	0	9
	UGANDA	1	0	1
	UKRAINE	1	0	1
	UNITED	2	0	2
US MINOR	1	0	1	
YEMEN	1	0	1	
Total	1,000	64	1,064	
STU2	United States	388	18	406
	AUSTRALIA	6	0	6

		Existing Member(s)	New as of 9/1/2014 or later	Total
STU2	BRAZIL	1	0	1
	CANADA	17	1	18
	CHILE	1	0	1
	CHINA	1	1	2
	INDONESIA	1	0	1
	ISRAEL	2	0	2
	JAPAN	7	0	7
	Korea, Republic	1	0	1
	KOREA,	2	0	2
	LEBANON	1	0	1
	MACAO	1	0	1
	MALAYSIA	1	0	1
	MEXICO	2	0	2
	NEW ZEALAND	3	0	3
	Puerto Rico	1	0	1
	SAUDI ARABIA	1	0	1
	UNITED	4	1	5
Total	441	21	462	
Total	12,770	294	13,064	

This report is based on members paid through 9/30/2014 or later.

Country/State/Province	Total	
AFGHANISTAN	5	0.0%
ALBANIA	13	0.1%
ALGERIA	4	0.0%
AMERICAN SAMOA	1	0.0%
ANGOLA	2	0.0%
ARGENTINA	25	0.2%
ARMENIA	4	0.0%
AUSTRALIA	64	0.5%
AUSTRIA	3	0.0%
AZERBAIJAN	5	0.0%
BAHRAIN	4	0.0%
BANGLADESH	5	0.0%
BARBADOS	3	0.0%
BELARUS	3	0.0%
BELGIUM	2	0.0%
BENIN	3	0.0%
BERMUDA	1	0.0%
BOLIVIA	8	0.1%
BOSNIA AND HERZEGOVINA	2	0.0%
BRAZIL	214	1.6%
BULGARIA	2	0.0%
BURKINA FASO	5	0.0%
BURUNDI	1	0.0%
CAMBODIA	2	0.0%
CAMEROON	5	0.0%
CANADA		
<i>CANADA</i>	<i>9</i>	
<i>CANADA Alberta</i>	<i>36</i>	
<i>CANADA British Columbia</i>	<i>144</i>	
<i>CANADA Manitoba</i>	<i>13</i>	
<i>CANADA New Brunswick</i>	<i>11</i>	
<i>CANADA Newfoundland</i>	<i>2</i>	
<i>CANADA Nova Scotia</i>	<i>8</i>	
<i>CANADA Ontario</i>	<i>125</i>	
<i>CANADA Quebec</i>	<i>20</i>	
<i>CANADA Saskatchewan</i>	<i>15</i>	
CANADA	383	2.9%
CHILE	16	0.1%
CHINA	550	4.2%
COLOMBIA	39	0.3%
COSTA RICA	32	0.2%
Cote d'Ivoire	1	0.0%
CROATIA	2	0.0%
CUBA	2	0.0%
CYPRUS	3	0.0%
CZECH REPUBLIC	6	0.0%
DENMARK	2	0.0%
DOMINICAN REPUBLIC	12	0.1%
ECUADOR	43	0.3%
EGYPT	322	2.5%
EL SALVADOR	24	0.2%
ETHIOPIA	3	0.0%
FINLAND	1	0.0%
FRANCE	7	0.1%
GAMBIA	1	0.0%
GEORGIA	9	0.1%
GERMANY	29	0.2%

GHANA	1	0.0%
GREECE	9	0.1%
GRENADA	3	0.0%
GUAM	1	0.0%
GUATEMALA	16	0.1%
GUINEA	2	0.0%
HAITI	16	0.1%
HONDURAS	5	0.0%
HONG KONG	12	0.1%
HONG KONG SAR CHINA	12	0.1%
HUNGARY	1	0.0%
ICELAND	1	0.0%
INDIA	71	0.5%
INDONESIA	16	0.1%
IRAN	5	0.0%
IRAN, ISLAMIC REPUBLIC OF	1	0.0%
IRAQ	13	0.1%
IRELAND	3	0.0%
ISRAEL	22	0.2%
ITALY	14	0.1%
JAMAICA	3	0.0%
JAPAN	419	3.2%
JORDAN	3	0.0%
KAZAKHSTAN	5	0.0%
KENYA	1	0.0%
Korea, Republic Of	16	0.1%
KOREA, REPUBLIC OF	20	0.2%
KOSOVO (UNMIK)	2	0.0%
KUWAIT	17	0.1%
KYRGYZSTAN	2	0.0%
LATVIA	1	0.0%
LEBANON	9	0.1%
LESOTHO	2	0.0%
LIBERIA	2	0.0%
LITHUANIA	1	0.0%
LUXEMBOURG	1	0.0%
MACAO	11	0.1%
MACEDONIA	3	0.0%
MADAGASCAR	8	0.1%
MALAWI	2	0.0%
MALAYSIA	21	0.2%
MALDIVES	1	0.0%
MALI	3	0.0%
MARSHALL ISLANDS	2	0.0%
MARTINIQUE	1	0.0%
MAURITANIA	3	0.0%
MAURITIUS	1	0.0%
MEXICO	138	1.1%
MICRONESIA, FED STATES OF	2	0.0%
MOLDOVA, REPUBLIC OF	5	0.0%
MONGOLIA	12	0.1%
MOROCCO	28	0.2%
MOZAMBIQUE	3	0.0%
NAMIBIA	2	0.0%
NEPAL	10	0.1%
NETHERLANDS	2	0.0%
NEW CALEDONIA	1	0.0%
NEW ZEALAND	19	0.1%
NICARAGUA	4	0.0%
NIGER	2	0.0%
NIGERIA	15	0.1%

NORWAY	4	0.0%
OMAN	9	0.1%
PAKISTAN	15	0.1%
PALESTINIAN TERRITORY	2	0.0%
PANAMA	23	0.2%
PARAGUAY	2	0.0%
PEOPLES REP OF CHINA	7	0.1%
PERU	89	0.7%
PHILIPPINES	23	0.2%
POLAND	7	0.1%
PORTUGAL	2	0.0%
Puerto Rico	2	0.0%
OATAR	37	0.3%
ROMANIA	4	0.0%
RUSSIA	18	0.1%
RUSSIAN FEDERATION	10	0.1%
RWANDA	3	0.0%
SAUDI ARABIA	60	0.5%
SCOTLAND	1	0.0%
SENEGAL	5	0.0%
SIERRA LEONE	2	0.0%
SINGAPORE	7	0.1%
SLOVAKIA	2	0.0%
SLOVENIA	1	0.0%
SOUTH AFRICA	6	0.0%
SOUTH KOREA	33	0.3%
SPAIN	9	0.1%
SRI LANKA	2	0.0%
SURINAME	1	0.0%
SWAZILAND	2	0.0%
SWEDEN	6	0.0%
SWITZERLAND	5	0.0%
SYRIAN ARAB REPUBLIC	1	0.0%
TAIWAN	15	0.1%
TAIWAN ROC	18	0.1%
TAJIKISTAN	4	0.0%
TANZANIA, UNITED REPUBLIC	2	0.0%
THAILAND	62	0.5%
TOGO	1	0.0%
TRINIDAD AND TOBAGO	1	0.0%
TUNISIA	20	0.2%
TURKEY	60	0.5%
UGANDA	4	0.0%
UKRAINE	3	0.0%
UNITED ARAB EMIRATES	42	0.3%
UNITED KINGDOM	50	0.4%
URUGUAY	10	0.1%
US MINOR OUTLYING ISLANDS	6	0.0%
USA		
<i>USA</i>	<i>52</i>	
<i>USA</i>	<i>Alabama</i>	<i>83</i>
<i>USA</i>	<i>Alaska</i>	<i>18</i>
<i>USA</i>	<i>American Embassy</i>	<i>12</i>
<i>USA</i>	<i>Arizona</i>	<i>229</i>
<i>USA</i>	<i>Arkansas</i>	<i>82</i>
<i>USA</i>	<i>Armed Forces</i>	<i>8</i>
<i>USA</i>	<i>Armed Frces Americas</i>	<i>3</i>
<i>USA</i>	<i>British Columbia</i>	<i>4</i>
<i>USA</i>	<i>California</i>	<i>955</i>
<i>USA</i>	<i>Colorado</i>	<i>178</i>
<i>USA</i>	<i>Connecticut</i>	<i>126</i>

USA	Delaware	41	
USA	District of Columbia	150	
USA	Florida	331	
USA	Georgia	182	
USA	Guam	2	
USA	Hawaii	73	
USA	Idaho	54	
USA	Illinois	353	
USA	Indiana	162	
USA	Iowa	90	
USA	Kansas	159	
USA	Kentucky	86	
USA	Louisiana	40	
USA	Maine	30	
USA	Marshall Islands	1	
USA	Maryland	286	
USA	Massachusetts	328	
USA	Michigan	240	
USA	Minnesota	157	
USA	Mississippi	57	
USA	Missouri	182	
USA	Montana	27	
USA	Nebraska	46	
USA	Nevada	49	
USA	New Hampshire	59	
USA	New Jersey	254	
USA	New Mexico	56	
USA	New York	631	
USA	North Carolina	167	
USA	North Dakota	19	
USA	Nunavut	1	
USA	Ohio	281	
USA	Oklahoma	67	
USA	Ontario	6	
USA	Oregon	579	
USA	Pennsylvania	325	
USA	Puerto Rico	16	
USA	Rhode Island	39	
USA	South Carolina	51	
USA	South Dakota	6	
USA	Tennessee	123	
USA	Texas	488	
USA	Utah	104	
USA	Vermont	55	
USA	Virgin Islands	3	
USA	Virginia	365	
USA	Washington	655	
USA	West Virginia	29	
USA	Wisconsin	141	
USA	Wyoming	13	
USA	Yukon Territory	1	
USA		9,410	72.0%
UZBEKISTAN		4	0.0%
VANUATU		2	0.0%
VENEZUELA		20	0.2%
VIET NAM		5	0.0%
VIETNAM		15	0.1%
Virgin Islands, US		1	0.0%
YEMEN		7	0.1%

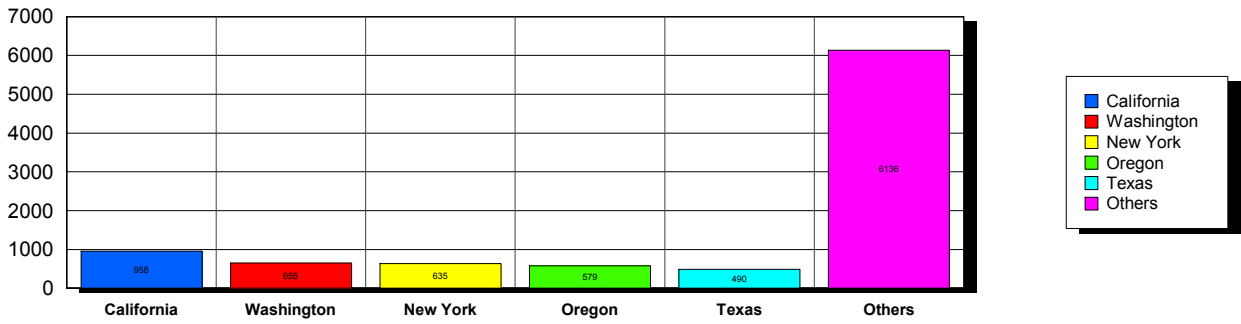
ZAMBIA	3	0.0%
ZIMBABWE	1	0.0%
<u>Grand Total:</u>	13,066	

165 distinct countries represented.

02-geographic.rpt 9/30/2014

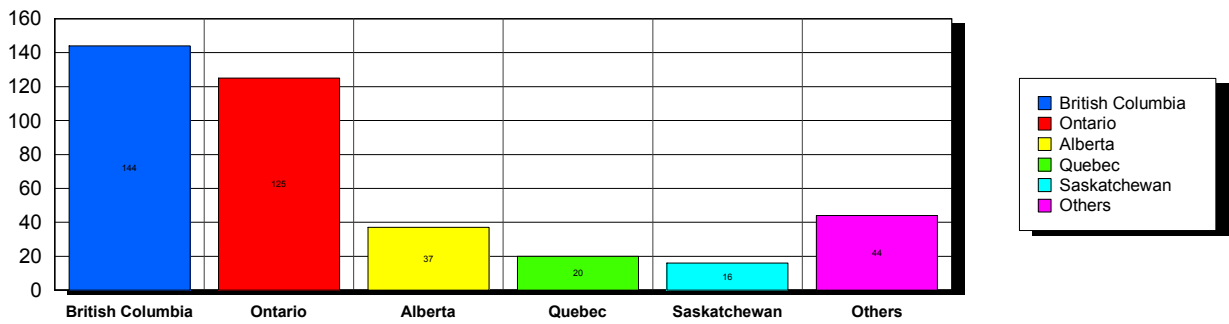
USA

Top 5 States per Country

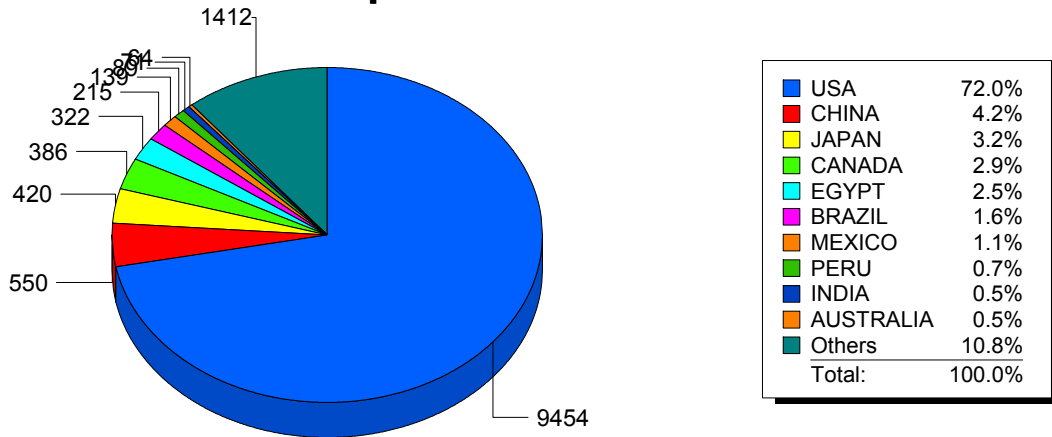


CANADA

Top 5 States per Country



Top 10 Countries



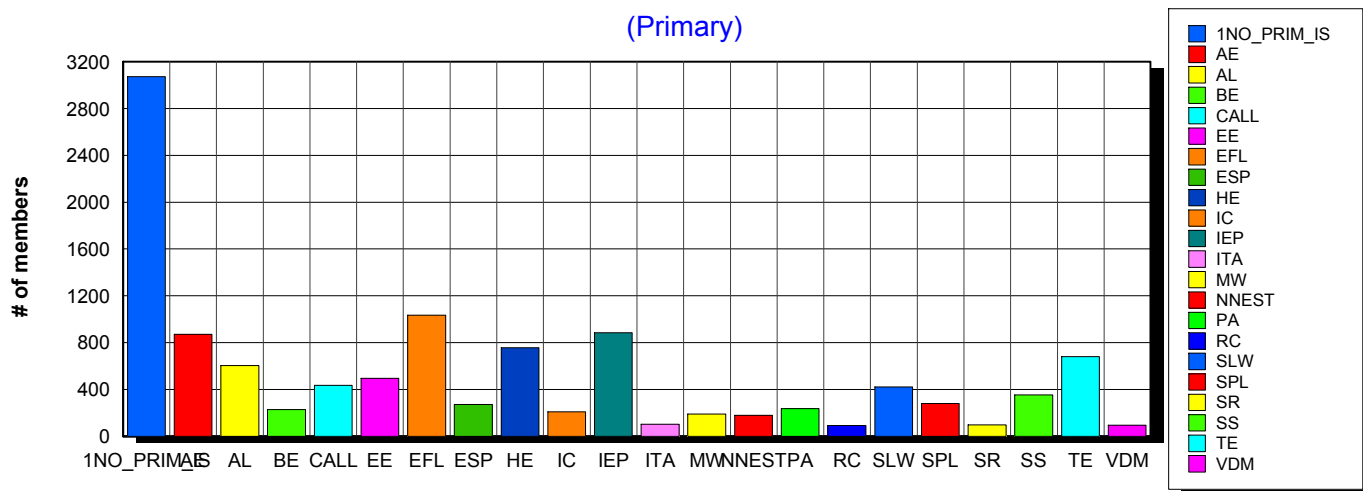
10/9/2014 **Basic statistics on Primary vs. other memberships in interest sections. For members paid through 9/30/2014 or later.**

		<i>Primary versus other</i>			
No Primary Interest Section	8.6%	3,092	3,073	19	
Adult Education	6.1%	2,187	870	1,317	
Applied Linguistics	5.7%	2,049	604	1,445	
Bilingual Education	3.1%	1,126	228	898	
Computer-Assisted Language Learning	5.3%	1,888	434	1,454	
Elementary Education	3.1%	1,125	495	630	
English as a Foreign Language	7.2%	2,584	1,033	1,551	
English for Specific Purposes	4.2%	1,524	272	1,252	
Higher Education	6.2%	2,210	756	1,454	
Intercultural Communication	4.6%	1,654	210	1,444	
Intensive English Programs	6.2%	2,229	884	1,345	
International Teaching Assistants	2.0%	704	103	601	
Materials Writers	3.3%	1,178	189	989	
Nonnative English Speakers in TESOL	2.8%	999	179	820	
Program Administration	3.2%	1,162	237	925	
Refugee Concerns	1.9%	697	92	605	
Second Language Writing	6.0%	2,169	420	1,749	
Speech, Pronunciation, and Listening	5.3%	1,886	280	1,606	
Social Responsibility	2.0%	706	98	608	
Secondary Schools	2.8%	989	354	635	
Teacher Education	6.9%	2,472	681	1,791	
Video & Digital Media	3.5%	1,243	93	1,150	
<i>11,556 distinct members</i>		Total # of IS memberships	35,873	<i>11,585</i>	<i>24,288</i>

The total count is the number of IS memberships total and may either be LESS or MORE than the actual number of individual members of TESOL. Due to open access to Interest Sections, these numbers may fluctuate considerably each month. For instance, one member may have selected four interest sections, while some members may belong to none.

Interest Sections

(Primary)

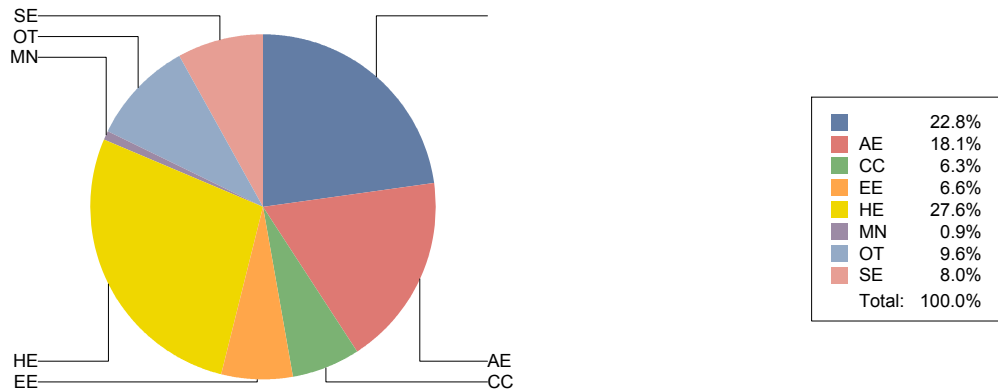


Basic Statistics on Area of Work (Members paid through >= 9/30/2014)

		2,922	22.8%
Adult Education	AE	2,317	18.1%
Community/2yr College	CC	809	6.3%
Elementary Education	EE	850	6.6%
Postsecondary Education	HE	3,532	27.6%
Mainstream	MN	119	0.9%
Other	OT	1,233	9.6%
Secondary Education	SE	1,029	8.0%
		12,811	

Only members who selected an area of work are included on this report. Other members may not have responded to this question and are excluded from the count.

Areas of Work



(Blanks indicate no response)

Statistics on Areas of Interest (Members paid through >= 9/30/2014)

<u>CODE</u>	<u>DESCRIPTION</u>	<u>TOTAL*</u>	<u>% of TOTAL*</u>
CURRICULUM	Materials development/Curriculum	1,920	4%
TE	Teacher education	1,913	4%
EFL	English as a foreign language	1,871	4%
SLA	Second language acquisition	1,788	4%
AL	Applied linguistics	1,711	4%
WRITING	Writing/composition	1,695	4%
HE	Higher education	1,667	4%
IEP	Intensive English programs	1,653	4%
CALL	Technology in education	1,649	4%
IC	Multiculturalism/intercultural communications	1,615	4%
AE	Adult education	1,610	4%
CONTENT	Content-based instruction	1,481	3%
PROFDEV	Professional development	1,438	3%
SP	Speaking/pronunciation	1,334	3%
READING	Reading/literacy	1,332	3%
ASSESS	Assessment/testing	1,283	3%
GRAMMAR	Grammar	1,277	3%
ESP	English for specific purposes	1,194	3%
RS	Research	1,078	2%
VOCAB	Vocabulary/Lexicon	890	2%
DISTANCE	Distance learning/Online Education	886	2%
BE	Bilingual education	868	2%
PA	Program administration	862	2%
SOCIAL	Social/global/political concerns	765	2%
WORKPLACE	Workplace English instruction/Business English	754	2%
ISKILL	Integrated Skills	752	2%
LISTEN	Listening	716	2%
VI	Video and digital media	701	2%
EE	Elementary/primary education	658	2%
SS	Secondary education	650	1%
COMMCOLL	Community college/technical ed	590	1%
RC	Refugee concerns	500	1%
STANDARDS	Standards	477	1%
LINGUISTICS	Theoretical Linguistics	472	1%
LIT	Literature	465	1%
ITA	International teaching assistants	451	1%
FAMILY	Community/family outreach	375	1%
EMPLOYMENT	Employment issues/Certification	341	1%
NNES	NNES/NES issues	311	1%
LDSN	Learning Disorders/Special Needs	303	1%
PUBLICPOLICY	Public policy	303	1%
ACCRED	Accreditation	279	1%
MAINSTREAMING	Mainstreaming	248	1%
ARTS	Arts/Media/Science/Math/Social Science	217	0%
STYLISTICS	Stylistics	87	0%

Sorted in order of prevalence.

** Note: Members are encouraged to choose multiple areas of interest and some members do not choose any areas of interest. The total number of distinct members (5,550) represented in this report is less than the total number of active members as indicated elsewhere in this report.*

Areas of interest are separate from official TESOL interest sections. Areas of interest represent distinct areas in which a member may be interested, rather than official entities in which a member is involved.

Areas of interest which have a very low count may be recent additions to the AOI list, or may reflect overall trends in membership.

Statistics on Areas of Expertise (Members paid through >= 9/30/2014)

<u>CODE</u>	<u>DESCRIPTION</u>	<u>TOTAL*</u>	<u>% of TOTAL*</u>
EFL	English as a foreign language	1,195	6%
CURRICULUM	Materials development/Curriculum	1,035	5%
AE	Adult education	1,001	5%
WRITING	Writing/composition	988	5%
IEP	Intensive English programs	952	5%
TE	Teacher education	861	4%
AL	Applied linguistics	852	4%
HE	Higher education	849	4%
SLA	Second language acquisition	766	4%
CONTENT	Content-based instruction	719	4%
GRAMMAR	Grammar	704	4%
IC	Multiculturalism/intercultural communications	631	3%
CALL	Technology in education	594	3%
ESP	English for specific purposes	571	3%
PROFDEV	Professional development	545	3%
SP	Speaking/pronunciation	539	3%
READING	Reading/literacy	527	3%
ASSESS	Assessment/testing	501	3%
PA	Program administration	472	2%
EE	Elementary/primary education	429	2%
ISKILL	Integrated Skills	419	2%
DISTANCE	Distance learning/Online Education	343	2%
COMMCOLL	Community college/technical ed	342	2%
SS	Secondary education	342	2%
BE	Bilingual education	331	2%
WORKPLACE	Workplace English instruction/Business English	312	2%
RS	Research	303	2%
LISTEN	Listening	286	1%
VOCAB	Vocabulary/Lexicon	260	1%
LIT	Literature	234	1%
SOCIAL	Social/global/political concerns	189	1%
VI	Video and digital media	172	1%
ACCRED	Accreditation	151	1%
ITA	International teaching assistants	151	1%
NNES	NNES/NES issues	130	1%
FAMILY	Community/family outreach	120	1%
STANDARDS	Standards	113	1%
LINGUISTICS	Theoretical Linguistics	107	1%
ARTS	Arts/Media/Science/Math/Social Science	104	1%
RC	Refugee concerns	102	1%
MAINSTREAMING	Mainstreaming	100	1%
EMPLOYMENT	Employment issues/Certification	95	0%
LDSN	Learning Disorders/Special Needs	86	0%
PUBLICPOLICY	Public policy	56	0%
STYLISTICS	Stylistics	19	0%

Sorted in order of prevalence.

** Note: Members are encouraged to choose multiple areas of expertise and some members do not choose any areas of expertise. The total number of distinct members (4,405) represented in this report is less than the total number of active members as indicated elsewhere in this report.*

Areas of Expertise are separate from official TESOL interest sections or Areas of Interest. Areas of expertise represent distinct areas in which a member may be experienced in, rather than official entities in which a member is involved.

Areas of interest which have a very low count may be recent additions to the AOI list, or may reflect overall trends in membership.