

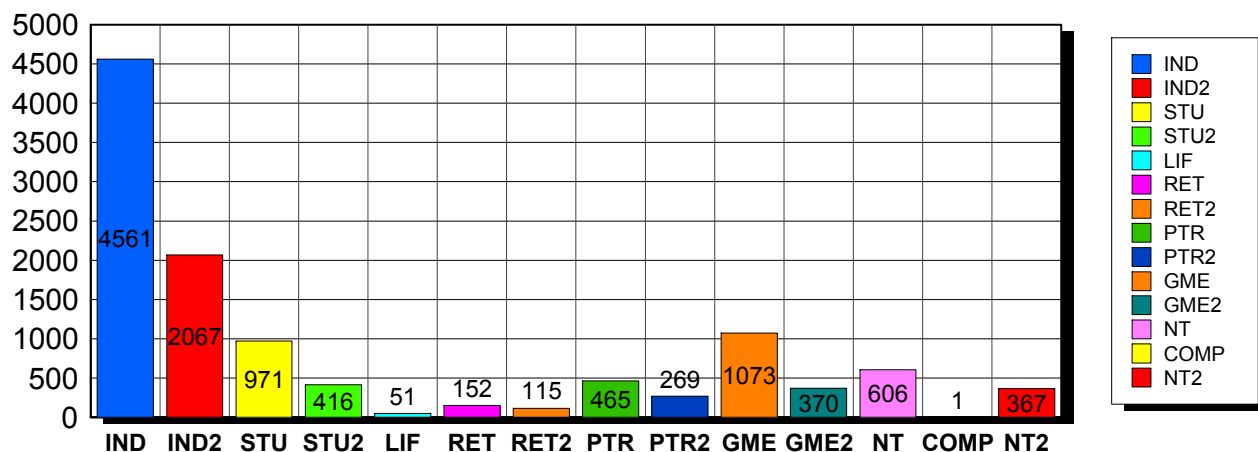
10/27/2016

**Membership Statistics: Grand totals for basic membership, by member type and country**

		<u># Memberships</u>	<u># Members</u>
<b>IND</b>	<b>BASIC</b>		
	Existing Member(s)	4,507	4,507
	New as of 9/1/2016 or later	54	54
<b>IND</b>	<b>BASIC</b>	<b>4,561</b>	<b>4,561</b>
-----			
<b>IND2</b>	<b>BASIC</b>		
	Existing Member(s)	2,056	2,056
	New as of 9/1/2016 or later	11	11
<b>IND2</b>	<b>BASIC</b>	<b>2,067</b>	<b>2,067</b>
-----			
<b>STU</b>	<b>BASIC</b>		
	Existing Member(s)	918	918
	New as of 9/1/2016 or later	53	53
<b>STU</b>	<b>BASIC</b>	<b>971</b>	<b>971</b>
-----			
<b>STU2</b>	<b>BASIC</b>		
	Existing Member(s)	402	402
	New as of 9/1/2016 or later	14	14
<b>STU2</b>	<b>BASIC</b>	<b>416</b>	<b>416</b>
-----			
<b>LIF</b>	<b>BASIC</b>		
	Existing Member(s)	51	51
<b>LIF</b>	<b>BASIC</b>	<b>51</b>	<b>51</b>
-----			
<b>RET</b>	<b>BASIC</b>		
	Existing Member(s)	151	151
	New as of 9/1/2016 or later	1	1
<b>RET</b>	<b>BASIC</b>	<b>152</b>	<b>152</b>
-----			
<b>RET2</b>	<b>BASIC</b>		
	Existing Member(s)	115	115
<b>RET2</b>	<b>BASIC</b>	<b>115</b>	<b>115</b>
-----			
<b>PTR</b>	<b>BASIC</b>		
	Existing Member(s)	458	458
	New as of 9/1/2016 or later	7	7
<b>PTR</b>	<b>BASIC</b>	<b>465</b>	<b>465</b>
-----			
<b>PTR2</b>	<b>BASIC</b>		
	Existing Member(s)	266	266
	New as of 9/1/2016 or later	3	3
<b>PTR2</b>	<b>BASIC</b>	<b>269</b>	<b>269</b>
-----			
<b>GME</b>	<b>BASIC</b>		
	Existing Member(s)	1,052	1,052
	New as of 9/1/2016 or later	21	21
<b>GME</b>	<b>BASIC</b>	<b>1,073</b>	<b>1,073</b>
-----			
<b>GME2</b>	<b>BASIC</b>		
	Existing Member(s)	366	366
	New as of 9/1/2016 or later	4	4
<b>GME2</b>	<b>BASIC</b>	<b>370</b>	<b>370</b>
-----			

<b>NT</b>	<b>BASIC</b>		
	Existing Member(s)	594	594
	New as of 9/1/2016 or later	12	12
<b>NT</b>	<b>BASIC</b>	<b>606</b>	<b>606</b>
<hr/>			
<b>COMP</b>	<b>BASIC</b>		
	Existing Member(s)	1	1
<b>COMP</b>	<b>BASIC</b>	<b>1</b>	<b>1</b>
<hr/>			
<b>NT2</b>	<b>BASIC</b>		
	Existing Member(s)	350	350
	New as of 9/1/2016 or later	17	17
<b>NT2</b>	<b>BASIC</b>	<b>367</b>	<b>367</b>
<hr/>			
<b>Grand Total:</b>		<b>11,484</b>	<b>11,484</b>

## Member Types



Note: in all general statistic reports, joint household memberships are treated as "one" member EXCEPT in the second column of this report, where joints are counted as two people, providing the most accurate count of the number of TESOL members.

		Existing Member(s)	New as of 9/1/2016 or later	Total
COMP	United States	1	0	1
	<b>Total</b>	1	0	1
GME	United States	37	1	38
	AFGHANISTAN	3	0	3
	ALBANIA	1	0	1
	ALGERIA	6	0	6
	ARGENTINA	23	1	24
	ARMENIA	1	0	1
	AUSTRALIA	1	0	1

		Existing Member(s)	New as of 9/1/2016 or later	Total
GME	AZERBAIJAN	4	0	4
	BAHRAIN	1	0	1
	BANGLADESH	13	0	13
	BELARUS	1	0	1
	BELIZE	1	0	1
	BHUTAN	0	2	2
	BOLIVIA	17	1	18
	BOSNIA AND	1	0	1
	BRAZIL	64	0	64
	BULGARIA	3	0	3
	CAMBODIA	2	0	2
	CAMEROON	2	0	2
	CHILE	5	0	5
	CHINA	110	0	110
	COLOMBIA	15	0	15
	COMOROS	1	0	1
	COSTA RICA	15	1	16
	CROATIA	6	0	6
	CUBA	1	0	1
	DOMINICA	1	0	1
	DOMINICAN	17	0	17
	ECUADOR	79	0	79
	EGYPT	31	0	31
	EL SALVADOR	12	0	12
	ETHIOPIA	0	1	1
	GEORGIA	4	0	4
	GUATEMALA	15	0	15
	HAITI	10	0	10
	HONDURAS	5	1	6
	HONG KONG	1	0	1
HUNGARY	5	0	5	

		Existing Member(s)	New as of 9/1/2016 or later	Total
GME	INDIA	54	0	54
	INDONESIA	8	1	9
	IRAN	5	0	5
	IRAN, ISLAMIC	1	0	1
	IRAQ	3	0	3
	ISRAEL	1	0	1
	JAMAICA	1	0	1
	JAPAN	1	0	1
	JORDAN	3	0	3
	KAZAKHSTAN	1	0	1
	KOSOVO	2	0	2
	KYRGYZSTAN	1	0	1
	Lao People's	1	0	1
	LATVIA	1	0	1
	LEBANON	7	0	7
	MACEDONIA	1	0	1
	MADAGASCAR	2	0	2
	MALAYSIA	12	0	12
	MAURITANIA	2	0	2
	MEXICO	50	0	50
	MOLDOVA,	2	0	2
	MONGOLIA	4	0	4
	MOROCCO	29	0	29
	MYANMAR	2	0	2
	NEPAL	18	1	19
	NEW ZEALAND	1	0	1
	NICARAGUA	3	0	3
	NIGERIA	5	1	6
	NORWAY	1	0	1
	PAKISTAN	16	2	18
PALESTINIAN	2	0	2	

		Existing Member(s)	New as of 9/1/2016 or later	Total	
GME	PANAMA	15	1	16	
	PARAGUAY	4	0	4	
	PEOPLES REP	24	0	24	
	PERU	101	0	101	
	PHILIPPINES	25	1	26	
	POLAND	5	0	5	
	ROMANIA	1	0	1	
	RUSSIA	3	0	3	
	RUSSIAN	8	1	9	
	RWANDA	5	0	5	
	SENEGAL	1	0	1	
	SERBIA	5	0	5	
	SOUTH AFRICA	2	0	2	
	SRI LANKA	4	0	4	
	SUDAN	1	0	1	
	SWAZILAND	1	0	1	
	SYRIAN ARAB	1	0	1	
	TAIWAN	2	0	2	
	TAIWAN ROC	1	0	1	
	TANZANIA,	1	0	1	
	THAILAND	14	2	16	
	TUNISIA	2	0	2	
	TURKEY	24	1	25	
	UKRAINE	9	0	9	
	UNITED	1	0	1	
	URUGUAY	7	0	7	
	VENEZUELA	23	0	23	
	VIET NAM	3	1	4	
	VIETNAM	4	1	5	
	YEMEN	1	0	1	
	<b>Total</b>		<b>1,052</b>	<b>21</b>	<b>1,073</b>

		Existing Member(s)	New as of 9/1/2016 or later	Total
GME2	United States	8	0	8
	AFGHANISTAN	1	0	1
	ALBANIA	1	0	1
	ALGERIA	1	0	1
	ANGOLA	1	0	1
	ARGENTINA	6	0	6
	ARMENIA	1	0	1
	BANGLADESH	1	0	1
	BELARUS	1	0	1
	BENIN	2	0	2
	BOLIVIA	4	0	4
	BRAZIL	19	0	19
	BULGARIA	4	0	4
	BURKINA FASO	1	0	1
	CAMBODIA	0	1	1
	CAMEROON	1	0	1
	CHILE	6	0	6
	CHINA	50	0	50
	COLOMBIA	14	0	14
	COSTA RICA	5	0	5
	DOMINICAN	8	0	8
	ECUADOR	17	1	18
	EGYPT	4	0	4
	GABON	2	0	2
	GEORGIA	1	0	1
	GRENADA	1	0	1
	GUATEMALA	1	0	1
	HONDURAS	1	0	1
	INDIA	21	1	22
	INDONESIA	3	0	3
IRAQ	2	0	2	

		Existing Member(s)	New as of 9/1/2016 or later	Total
GME2	JORDAN	3	0	3
	KAZAKHSTAN	5	0	5
	LATVIA	2	0	2
	LEBANON	3	0	3
	LITHUANIA	1	0	1
	MADAGASCAR	1	0	1
	MALAYSIA	7	1	8
	MAURITANIA	1	0	1
	MEXICO	19	0	19
	MOLDOVA,	1	0	1
	MONGOLIA	7	0	7
	MOROCCO	3	0	3
	MOZAMBIQUE	1	0	1
	NAMIBIA	1	0	1
	NEPAL	4	0	4
	NIGER	1	0	1
	NIGERIA	5	0	5
	PAKISTAN	4	0	4
	PANAMA	2	0	2
	PARAGUAY	1	0	1
	PEOPLES REP	2	0	2
	PERU	8	0	8
	PHILIPPINES	7	0	7
	POLAND	6	0	6
	RUSSIA	3	0	3
	RUSSIAN	4	0	4
	SENEGAL	1	0	1
	SIERRA LEONE	1	0	1
	SRI LANKA	2	0	2
	TAIWAN ROC	3	0	3
TAJIKISTAN	1	0	1	

		Existing Member(s)	New as of 9/1/2016 or later	Total
GME2	THAILAND	17	0	17
	TUNISIA	1	0	1
	TURKEY	17	0	17
	UKRAINE	1	0	1
	UNITED	1	0	1
	United States	1	0	1
	URUGUAY	3	0	3
	UZBEKISTAN	19	0	19
	VENEZUELA	2	0	2
	VIET NAM	1	0	1
	VIETNAM	4	0	4
	YEMEN	1	0	1
	<b>Total</b>	<b>366</b>	<b>4</b>	<b>370</b>
	IND	United States	3,933	45
02453-2728		1	0	1
ANGOLA		1	0	1
ARGENTINA		1	0	1
ARMENIA		1	0	1
AUSTRALIA		16	0	16
AUSTRIA		2	0	2
BERMUDA		1	0	1
BRAZIL		8	1	9
CANADA		114	1	115
CHILE		3	0	3
CHINA		5	0	5
COSTA RICA		1	0	1
CZECH		5	1	6
DENMARK		2	0	2
ECUADOR		12	0	12
EGYPT		3	0	3
FINLAND		1	0	1



		Existing Member(s)	New as of 9/1/2016 or later	Total
IND	FRANCE	3	0	3
	GERMANY	5	0	5
	GREECE	2	0	2
	HAITI	1	0	1
	HONG KONG	2	0	2
	HONG KONG	2	0	2
	HUNGARY	1	0	1
	INDIA	1	0	1
	IRAN	1	0	1
	IRAQ	1	0	1
	IRELAND	1	0	1
	ISRAEL	4	0	4
	ITALY	4	0	4
	JAPAN	173	2	175
	KAZAKHSTAN	1	0	1
	Korea, Republic	6	0	6
	KOREA,	1	0	1
	KOREA,	4	0	4
	KOSOVO	1	0	1
	KUWAIT	10	0	10
	LIBYA	1	0	1
	MEXICO	2	0	2
	NETHERLAND	3	0	3
	NEW ZEALAND	5	0	5
	NORWAY	3	0	3
	OMAN	6	0	6
	PAKISTAN	0	1	1
	PEOPLES REP	1	0	1
	PERU	3	0	3
	QATAR	8	0	8
SAUDI ARABIA	16	1	17	

		Existing Member(s)	New as of 9/1/2016 or later	Total
IND	SINGAPORE	4	0	4
	SLOVAKIA	1	0	1
	SOUTH AFRICA	1	0	1
	SOUTH KOREA	11	0	11
	SPAIN	5	0	5
	SWEDEN	6	0	6
	SWITZERLAND	1	0	1
	TAIWAN	6	0	6
	TAIWAN ROC	2	0	2
	THAILAND	4	0	4
	TRINIDAD AND	2	0	2
	TURKEY	1	0	1
	UGANDA	1	0	1
	UNITED ARAB	20	1	21
	UNITED	10	0	10
	United States	42	1	43
	UNITED	4	0	4
	VANUATU	2	0	2
	VIET NAM	1	0	1
	YEMEN	1	0	1
<b>Total</b>		<b>4,507</b>	<b>54</b>	<b>4,561</b>
IND2	United States	1,693	8	1,701
	AUSTRALIA	12	0	12
	AUSTRIA	2	0	2
	BAHRAIN	1	0	1
	BRAZIL	1	0	1
	BURKINA FASO	1	0	1
	CANADA	101	1	102
	CAYMAN	1	0	1
	CHILE	1	0	1
	CHINA	8	0	8

		Existing Member(s)	New as of 9/1/2016 or later	Total
IND2	COSTA RICA	1	0	1
	CYPRUS	2	0	2
	DENMARK	1	0	1
	DOMINICA	1	0	1
	FINLAND	1	0	1
	FRANCE	1	0	1
	GERMANY	5	0	5
	HONG KONG	2	0	2
	HONG KONG	8	0	8
	INDIA	2	0	2
	INDONESIA	1	0	1
	IRAQ	1	0	1
	ITALY	3	0	3
	JAPAN	90	1	91
	Korea, Republic	4	0	4
	KOREA,	4	0	4
	KUWAIT	3	0	3
	Lao People's	1	0	1
	LUXEMBOURG	1	0	1
	MACAO	4	0	4
	MALAYSIA	2	0	2
	MARTINIQUE	1	0	1
	NEW	1	0	1
	NEW ZEALAND	3	0	3
	NICARAGUA	1	0	1
	NORWAY	2	0	2
	OMAN	1	0	1
QATAR	11	0	11	
ROMANIA	1	0	1	
SAUDI ARABIA	10	0	10	
SERBIA	1	0	1	

		Existing Member(s)	New as of 9/1/2016 or later	Total
IND2	SINGAPORE	4	1	5
	SLOVAKIA	1	0	1
	SOUTH AFRICA	1	0	1
	SOUTH KOREA	6	0	6
	SWITZERLAND	2	0	2
	TAIWAN	5	0	5
	TAIWAN ROC	2	0	2
	TRINIDAD AND	1	0	1
	TURKEY	2	0	2
	UKRAINE	1	0	1
	UNITED ARAB	10	0	10
	UNITED	6	0	6
	United States	18	0	18
	UNITED	2	0	2
	URUGUAY	2	0	2
	US MINOR	1	0	1
	VENEZUELA	1	0	1
	<b>Total</b>	<b>2,056</b>	<b>11</b>	<b>2,067</b>
LIF	United States	42	0	42
	AUSTRALIA	1	0	1
	CANADA	2	0	2
	EGYPT	1	0	1
	ISRAEL	1	0	1
	JAPAN	1	0	1
	UNITED ARAB	1	0	1
	UNITED	2	0	2
	<b>Total</b>	<b>51</b>	<b>0</b>	<b>51</b>
NT	United States	531	9	540
	AUSTRALIA	2	1	3
	AUSTRIA	1	0	1
	CANADA	10	0	10

		Existing Member(s)	New as of 9/1/2016 or later	Total
NT	CHINA	2	0	2
	ECUADOR	2	0	2
	FRANCE	1	0	1
	GERMANY	1	0	1
	HONG KONG	1	0	1
	HONG KONG	1	0	1
	INDIA	1	0	1
	IRAQ	1	0	1
	ITALY	2	0	2
	JAPAN	11	1	12
	KUWAIT	1	0	1
	MATARA	1	0	1
	MEXICO	2	0	2
	MONGOLIA	1	0	1
	NEW ZEALAND	1	0	1
	PALESTINIAN	2	0	2
	PERU	1	0	1
	QATAR	1	0	1
	RUSSIAN	1	0	1
	SINGAPORE	1	0	1
	SOUTH AFRICA	1	0	1
	SOUTH KOREA	3	0	3
	THAILAND	1	0	1
	TURKEY	1	0	1
	United States	4	1	5
	UNITED	4	0	4
VIET NAM	1	0	1	
<b>Total</b>	<b>594</b>	<b>12</b>	<b>606</b>	
NT2	United States	316	11	327
	AFGHANISTAN	1	0	1
	AUSTRALIA	1	2	3

		Existing Member(s)	New as of 9/1/2016 or later	Total
NT2	CANADA	9	0	9
	HONG KONG	1	0	1
	HONG KONG	2	0	2
	HUNGARY	1	0	1
	ITALY	1	0	1
	JAPAN	2	3	5
	KOREA,	1	0	1
	KUWAIT	1	0	1
	MEXICO	1	0	1
	NEW ZEALAND	1	0	1
	SAUDI ARABIA	1	0	1
	SINGAPORE	2	0	2
	SOUTH KOREA	1	0	1
	TAIWAN	2	0	2
	UNITED ARAB	1	0	1
	UNITED	1	0	1
	United States	4	1	5
	<b>Total</b>	<b>350</b>	<b>17</b>	<b>367</b>
PTR	United States	<b>357</b>	<b>5</b>	<b>362</b>
	AUSTRALIA	3	0	3
	CANADA	11	0	11
	CHINA	5	1	6
	COLOMBIA	3	0	3
	COSTA RICA	3	0	3
	COTE	0	1	1
	DOMINICAN	2	0	2
	ECUADOR	12	0	12
	EGYPT	1	0	1
	FRANCE	1	0	1
	GERMANY	1	0	1
	HAITI	1	0	1

		Existing Member(s)	New as of 9/1/2016 or later	Total
PTR	ICELAND	1	0	1
	INDONESIA	2	0	2
	JAPAN	8	0	8
	Korea, Republic	1	0	1
	KUWAIT	1	0	1
	Lao People's	1	0	1
	LITHUANIA	1	0	1
	MEXICO	1	0	1
	MOROCCO	1	0	1
	NEW ZEALAND	1	0	1
	NICARAGUA	2	0	2
	NIGERIA	1	0	1
	PAKISTAN	1	0	1
	PANAMA	1	0	1
	PHILIPPINES	3	0	3
	POLAND	1	0	1
	Puerto Rico	3	0	3
	SAUDI ARABIA	1	0	1
	SENEGAL	1	0	1
	SINGAPORE	1	0	1
	SPAIN	2	0	2
	TANZANIA,	3	0	3
	THAILAND	2	0	2
	TURKEY	4	0	4
	UNITED ARAB	2	0	2
	UNITED	5	0	5
United States	6	0	6	
VENEZUELA	1	0	1	
<b>Total</b>	<b>458</b>	<b>7</b>	<b>465</b>	
PTR2	United States	212	2	214
	AUSTRALIA	1	0	1

		Existing Member(s)	New as of 9/1/2016 or later	Total
PTR2	BRAZIL	2	0	2
	CANADA	11	0	11
	CHILE	1	0	1
	CHINA	2	0	2
	COLOMBIA	1	0	1
	GERMANY	1	1	2
	HONG KONG	1	0	1
	INDONESIA	1	0	1
	ISRAEL	1	0	1
	ITALY	1	0	1
	JAPAN	4	0	4
	MACAO	1	0	1
	MEXICO	1	0	1
	NIGERIA	1	0	1
	PAKISTAN	1	0	1
	PHILIPPINES	1	0	1
	POLAND	1	0	1
	SAUDI ARABIA	5	0	5
	SRI LANKA	1	0	1
	TAIWAN	5	0	5
	THAILAND	1	0	1
	TURKEY	3	0	3
	UGANDA	1	0	1
	UNITED ARAB	1	0	1
	United States	3	0	3
	URUGUAY	1	0	1
<b>Total</b>	<b>266</b>	<b>3</b>	<b>269</b>	
RET	United States	134	0	134
	AUSTRALIA	1	0	1
	BRAZIL	1	0	1
	CANADA	3	0	3



		Existing Member(s)	New as of 9/1/2016 or later	Total
RET	COLOMBIA	1	1	2
	GERMANY	1	0	1
	ISRAEL	1	0	1
	JAPAN	2	0	2
	MEXICO	1	0	1
	PERU	1	0	1
	PORTUGAL	1	0	1
	SRI LANKA	1	0	1
	TURKEY	1	0	1
	United States	2	0	2
	<b>Total</b>	<b>151</b>	<b>1</b>	<b>152</b>
RET2	United States	98	0	98
	CANADA	1	0	1
	GERMANY	1	0	1
	ISRAEL	3	0	3
	JAPAN	5	0	5
	NEW ZEALAND	1	0	1
	OMAN	1	0	1
	SOUTH KOREA	1	0	1
	SPAIN	1	0	1
	THAILAND	1	0	1
	UNITED	2	0	2
	<b>Total</b>	<b>115</b>	<b>0</b>	<b>115</b>
STU	United States	787	43	830
	AUSTRALIA	8	1	9
	BARBADOS	1	0	1
	BELGIUM	1	0	1
	BRAZIL	4	0	4
	CANADA	28	1	29
	CHINA	4	0	4
	COLOMBIA	1	0	1

		Existing Member(s)	New as of 9/1/2016 or later	Total
STU	ECUADOR	7	0	7
	GERMANY	1	0	1
	GHANA	1	0	1
	GUATEMALA	1	0	1
	HONDURAS	1	0	1
	HONG KONG	3	1	4
	HONG KONG	3	0	3
	INDONESIA	1	0	1
	ISRAEL	1	0	1
	ITALY	1	0	1
	JAPAN	13	0	13
	KAZAKHSTAN	0	1	1
	KOREA,	1	0	1
	KUWAIT	1	0	1
	MEXICO	7	0	7
	NEPAL	1	0	1
	NEW ZEALAND	2	0	2
	PAKISTAN	1	0	1
	PHILIPPINES	1	0	1
	Puerto Rico	1	0	1
	RUSSIAN	2	0	2
	SAUDI ARABIA	6	0	6
	SINGAPORE	1	0	1
	SOUTH AFRICA	1	0	1
	SOUTH KOREA	1	0	1
	TAIWAN	3	0	3
	THAILAND	2	1	3
	TURKEY	9	4	13
	UNITED ARAB	2	0	2
	UNITED	2	0	2
United States	6	1	7	

		Existing Member(s)	New as of 9/1/2016 or later	Total
STU	UNITED	1	0	1
	<b>Total</b>	<b>918</b>	<b>53</b>	<b>971</b>
STU2	United States	343	13	356
	ALBANIA	2	0	2
	AUSTRALIA	4	0	4
	BRAZIL	2	0	2
	CAMEROON	2	0	2
	CANADA	18	0	18
	CHINA	2	0	2
	FRANCE	1	0	1
	GERMANY	1	0	1
	HONG KONG	2	0	2
	HONG KONG	1	0	1
	INDONESIA	1	0	1
	JAPAN	2	0	2
	Korea, Republic	2	0	2
	KOREA,	1	0	1
	LATVIA	1	0	1
	MACAO	1	0	1
	NEW ZEALAND	2	0	2
	OMAN	1	0	1
	Puerto Rico	1	0	1
	SINGAPORE	1	0	1
	THAILAND	1	0	1
	UNITED	5	1	6
	United States	4	0	4
	VIET NAM	1	0	1
	<b>Total</b>	<b>402</b>	<b>14</b>	<b>416</b>
	<b>Total</b>		<b>11,287</b>	<b>197</b>

This report is based on members paid through 9/30/2016 or later.

Country/State/Province	Total	
02453-2728	1	0.0%
AFGHANISTAN	5	0.0%
ALBANIA	4	0.0%
ALGERIA	7	0.1%
ANGOLA	2	0.0%
ARGENTINA	31	0.3%
ARMENIA	3	0.0%
AUSTRALIA	54	0.5%
AUSTRIA	5	0.0%
AZERBAIJAN	4	0.0%
BAHRAIN	2	0.0%
BANGLADESH	14	0.1%
BARBADOS	1	0.0%
BELARUS	2	0.0%
BELGIUM	1	0.0%
BELIZE	1	0.0%
BENIN	2	0.0%
BERMUDA	1	0.0%
BHUTAN	2	0.0%
BOLIVIA	22	0.2%
BOSNIA AND HERZEGOVINA	1	0.0%
BRAZIL	102	0.9%
BULGARIA	7	0.1%
BURKINA FASO	2	0.0%
CAMBODIA	3	0.0%
CAMEROON	5	0.0%
CANADA		
CANADA	5	
CANADA	Alberta	31
CANADA	Armed Frces Americas	1
CANADA	British Columbia	87
CANADA	Manitoba	12
CANADA	New Brunswick	8
CANADA	Northwest Territories	1
CANADA	Nova Scotia	9
CANADA	Ontario	124
CANADA	Quebec	21
CANADA	Saskatchewan	12
CANADA	311	2.7%
CAYMAN ISLANDS	1	0.0%
CHILE	16	0.1%
CHINA	189	1.6%
COLOMBIA	36	0.3%
COMOROS	1	0.0%
COSTA RICA	26	0.2%
COTE D'IVOIRE	1	0.0%
CROATIA	6	0.1%
CUBA	1	0.0%
CYPRUS	2	0.0%
CZECH REPUBLIC	6	0.1%
DENMARK	3	0.0%
DOMINICA	2	0.0%
DOMINICAN REPUBLIC	27	0.2%
ECUADOR	130	1.1%
EGYPT	40	0.3%
EL SALVADOR	12	0.1%
ETHIOPIA	1	0.0%

FINLAND	2	0.0%
FRANCE	7	0.1%
GABON	2	0.0%
GEORGIA	5	0.0%
GERMANY	18	0.2%
GHANA	1	0.0%
GREECE	2	0.0%
GRENADA	1	0.0%
GUATEMALA	17	0.1%
HAITI	12	0.1%
HONDURAS	8	0.1%
HONG KONG	13	0.1%
HONG KONG SAR CHINA	18	0.2%
HUNGARY	7	0.1%
ICELAND	1	0.0%
INDIA	81	0.7%
INDONESIA	18	0.2%
IRAN	6	0.1%
IRAN, ISLAMIC REPUBLIC OF	1	0.0%
IRAQ	8	0.1%
IRELAND	1	0.0%
ISRAEL	12	0.1%
ITALY	12	0.1%
JAMAICA	1	0.0%
JAPAN	319	2.8%
JORDAN	6	0.1%
KAZAKHSTAN	8	0.1%
Korea, Republic Of	13	0.1%
KOREA, REPUBLIC OF	1	0.0%
KOREA, REPUBLIC OF	11	0.1%
KOSOVO (UNMIK)	3	0.0%
KUWAIT	17	0.1%
KYRGYZSTAN	1	0.0%
Lao People's Dem Republic	3	0.0%
LATVIA	4	0.0%
LEBANON	10	0.1%
LIBYA	1	0.0%
LITHUANIA	2	0.0%
LUXEMBOURG	1	0.0%
MACAO	6	0.1%
MACEDONIA	1	0.0%
MADAGASCAR	3	0.0%
MALAYSIA	22	0.2%
MARTINIQUE	1	0.0%
MATARA	1	0.0%
MAURITANIA	3	0.0%
MEXICO	84	0.7%
MOLDOVA, REPUBLIC OF	3	0.0%
MONGOLIA	12	0.1%
MOROCCO	33	0.3%
MOZAMBIQUE	1	0.0%
MYANMAR	2	0.0%
NAMIBIA	1	0.0%
NEPAL	24	0.2%
NETHERLANDS	3	0.0%
NEW CALEDONIA	1	0.0%
NEW ZEALAND	17	0.1%
NICARAGUA	6	0.1%
NIGER	1	0.0%
NIGERIA	13	0.1%
NORWAY	6	0.1%

OMAN		9	0.1%
PAKISTAN		27	0.2%
PALESTINIAN TERRITORY		4	0.0%
PANAMA		19	0.2%
PARAGUAY		5	0.0%
PEOPLES REP OF CHINA		27	0.2%
PERU		114	1.0%
PHILIPPINES		38	0.3%
POLAND		13	0.1%
PORTUGAL		1	0.0%
Puerto Rico		5	0.0%
OATAR		20	0.2%
ROMANIA		2	0.0%
RUSSIA		6	0.1%
RUSSIAN FEDERATION		16	0.1%
RWANDA		5	0.0%
SAUDI ARABIA		40	0.3%
SENEGAL		3	0.0%
SERBIA		6	0.1%
SIERRA LEONE		1	0.0%
SINGAPORE		15	0.1%
SLOVAKIA		2	0.0%
SOUTH AFRICA		6	0.1%
SOUTH KOREA		23	0.2%
SPAIN		8	0.1%
SRI LANKA		8	0.1%
SUDAN		1	0.0%
SWAZILAND		1	0.0%
SWEDEN		6	0.1%
SWITZERLAND		3	0.0%
SYRIAN ARAB REPUBLIC		1	0.0%
TAIWAN		23	0.2%
TAIWAN ROC		8	0.1%
TAJIKISTAN		1	0.0%
TANZANIA, UNITED REPUBLIC		4	0.0%
THAILAND		46	0.4%
TRINIDAD AND TOBAGO		3	0.0%
TUNISIA		3	0.0%
TURKEY		67	0.6%
UGANDA		2	0.0%
UKRAINE		11	0.1%
UNITED ARAB EMIRATES		38	0.3%
UNITED KINGDOM		37	0.3%
United States		94	0.8%
UNITED STATES OF AMERICA		11	0.1%
URUGUAY		13	0.1%
US MINOR OUTLYING ISLANDS		1	0.0%
USA			
USA		58	
USA	Alabama	100	
USA	Alaska	11	
USA	American Embassy	13	
USA	Arizona	160	
USA	Arkansas	61	
USA	Armed Forces	10	
USA	Armed Frces Americas	3	
USA	British Columbia	1	
USA	California	745	
USA	Colorado	126	
USA	Connecticut	121	
USA	Delaware	80	

USA	District of Columbia	195	
USA	Florida	311	
USA	Georgia	181	
USA	Guam	1	
USA	Hawaii	55	
USA	Idaho	39	
USA	Illinois	303	
USA	Indiana	163	
USA	Iowa	103	
USA	Kansas	138	
USA	Kentucky	76	
USA	Louisiana	45	
USA	Maine	52	
USA	Manitoba	1	
USA	Maryland	503	
USA	Massachusetts	308	
USA	Michigan	252	
USA	Minnesota	129	
USA	Mississippi	67	
USA	Missouri	193	
USA	Montana	13	
USA	Nebraska	56	
USA	Nevada	39	
USA	New Hampshire	55	
USA	New Jersey	263	
USA	New Mexico	42	
USA	New York	661	
USA	North Carolina	171	
USA	North Dakota	19	
USA	Ohio	263	
USA	Oklahoma	57	
USA	Ontario	2	
USA	Oregon	218	
USA	Pennsylvania	387	
USA	Prince Edward Island	1	
USA	Puerto Rico	21	
USA	Rhode Island	56	
USA	Saskatchewan	1	
USA	South Carolina	55	
USA	South Dakota	15	
USA	Tennessee	127	
USA	Texas	394	
USA	Utah	83	
USA	Vermont	67	
USA	Virginia	490	
USA	Washington	300	
USA	West Virginia	36	
USA	Wisconsin	129	
USA	Wyoming	8	
<b>USA</b>		<b>8,633</b>	<b>75.1%</b>
<b>UZBEKISTAN</b>		<b>19</b>	<b>0.2%</b>
<b>VANUATU</b>		<b>2</b>	<b>0.0%</b>
<b>VENEZUELA</b>		<b>27</b>	<b>0.2%</b>
<b>VIET NAM</b>		<b>8</b>	<b>0.1%</b>
<b>VIETNAM</b>		<b>9</b>	<b>0.1%</b>
<b>YEMEN</b>		<b>3</b>	<b>0.0%</b>

**Grand Total:** \_\_\_\_\_

**11,491**

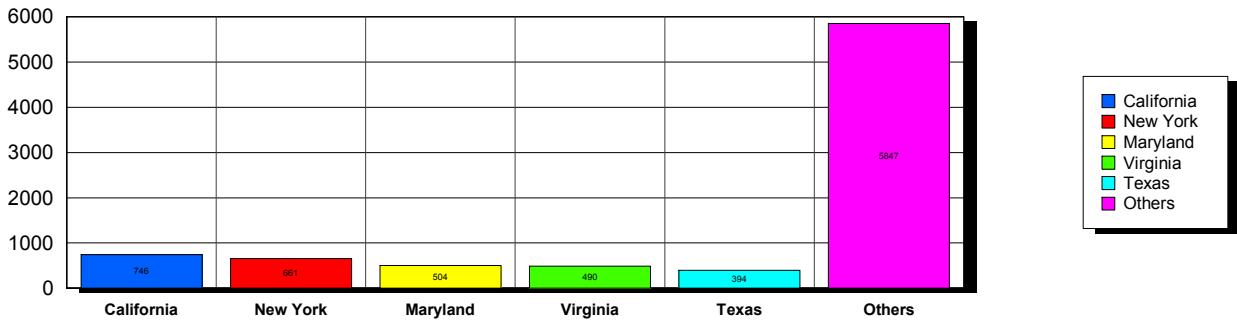
**160** distinct countries represented.

02-geographic.rpt 9/30/2016



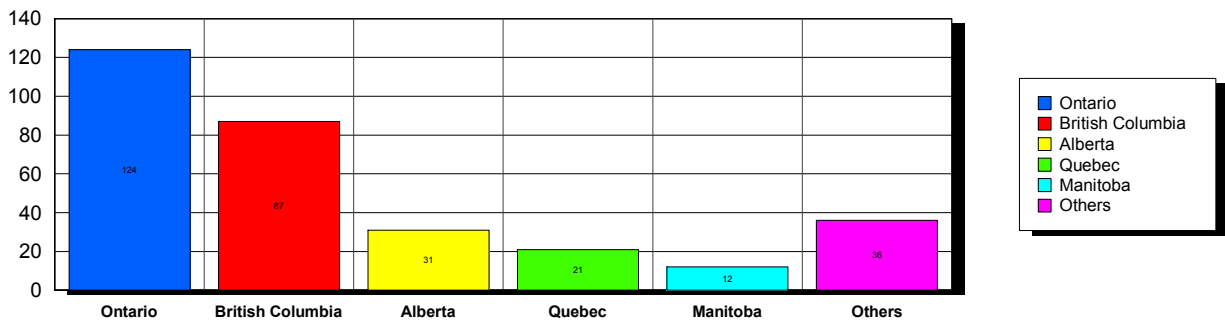
USA

Top 5 States per Country

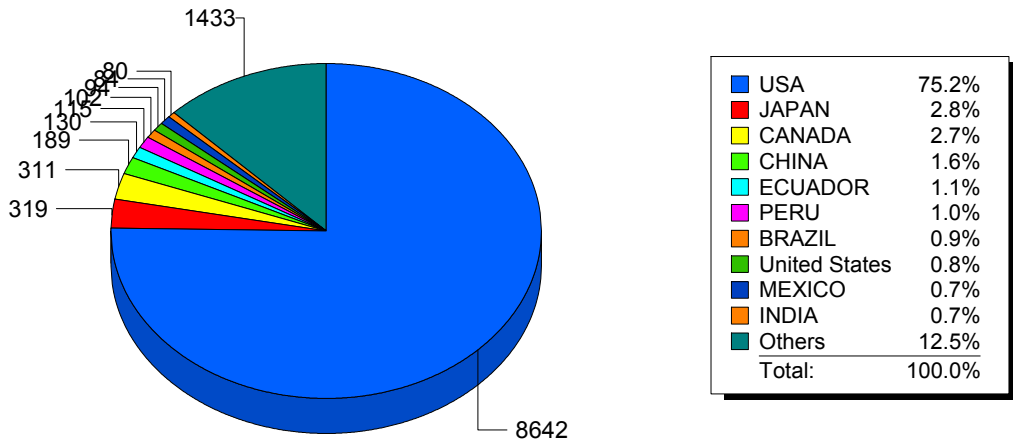


CANADA

Top 5 States per Country



Top 10 Countries



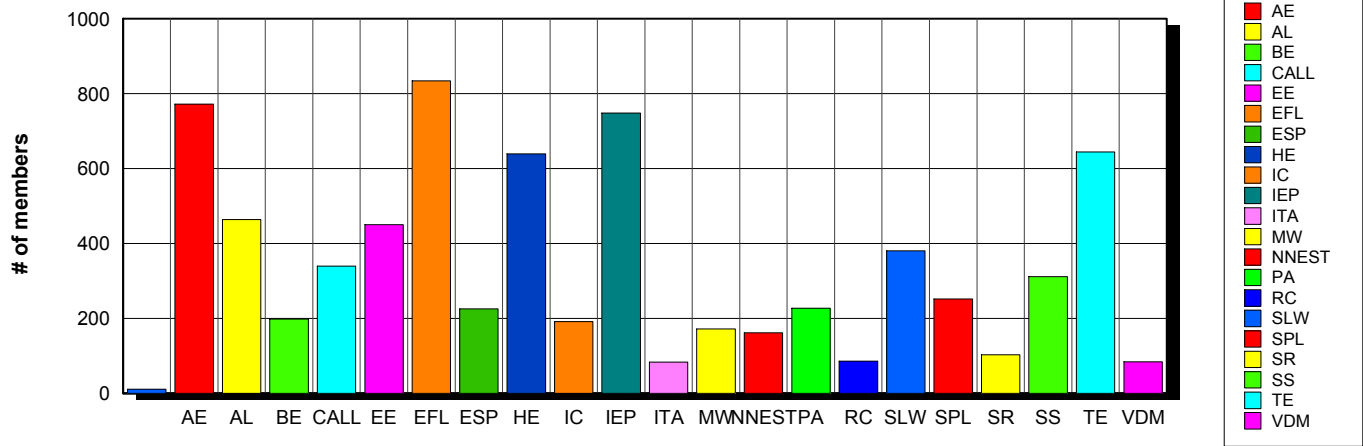
10/27/2016 **Basic statistics on Primary vs. other memberships in interest sections. For members paid through 9/30/2016 or later.**

		<i>Primary versus other</i>		
No Primary Interest Section	0.1%	<b>16</b>	11	5
Adult Education	6.7%	<b>2,035</b>	772	1,263
Applied Linguistics	6.2%	<b>1,883</b>	464	1,419
Bilingual Education	3.4%	<b>1,043</b>	198	845
Computer-Assisted Language Learning	5.5%	<b>1,664</b>	339	1,325
Elementary Education	3.5%	<b>1,059</b>	450	609
English as a Foreign Language	7.4%	<b>2,256</b>	834	1,422
English for Specific Purposes	4.7%	<b>1,425</b>	225	1,200
Higher Education	6.6%	<b>2,011</b>	639	1,372
Intercultural Communication	5.2%	<b>1,596</b>	191	1,405
Intensive English Programs	6.6%	<b>1,998</b>	748	1,250
International Teaching Assistants	2.1%	<b>630</b>	83	547
Materials Writers	3.6%	<b>1,107</b>	172	935
Nonnative English Speakers in TESOL	3.0%	<b>928</b>	161	767
Program Administration	3.7%	<b>1,137</b>	227	910
Refugee Concerns	2.5%	<b>750</b>	86	664
Second Language Writing	6.6%	<b>2,001</b>	380	1,621
Speech, Pronunciation, and Listening	5.7%	<b>1,726</b>	252	1,474
Social Responsibility	2.4%	<b>730</b>	103	627
Secondary Schools	3.0%	<b>919</b>	311	608
Teacher Education	7.8%	<b>2,372</b>	644	1,728
Video & Digital Media	3.8%	<b>1,143</b>	84	1,059
<i>7,501 distinct members</i>		<b>Total # of IS memberships</b>	<b>30,429</b>	7,374 23,055

The total count is the number of IS memberships total and may either be LESS or MORE than the actual number of individual members of TESOL. Due to open access to Interest Sections, these numbers may fluctuate considerably each month. For instance, one member may have selected four interest sections, while some members may belong to none.

### Interest Sections

(Primary)

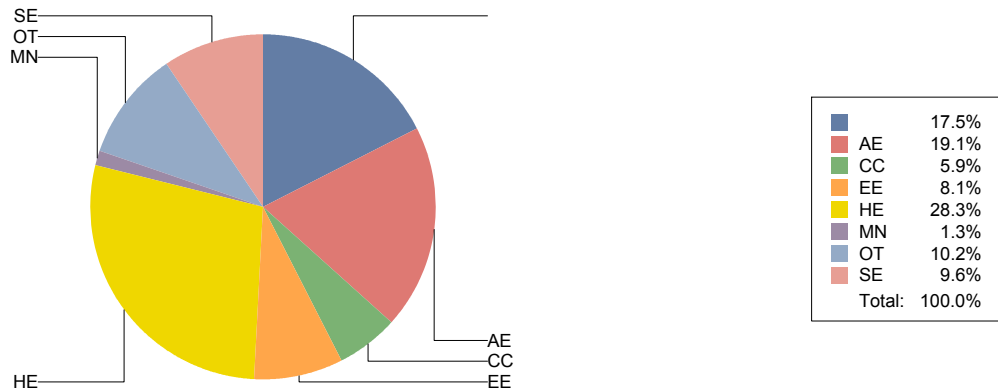


## Basic Statistics on Area of Work (Members paid through >= 9/30/2016)

		2,004	17.5%
Adult Education	AE	2,180	19.1%
Community/2yr College	CC	679	5.9%
Elementary Education	EE	930	8.1%
Postsecondary Education	HE	3,228	28.3%
Mainstream	MN	143	1.3%
Other	OT	1,168	10.2%
Secondary Education	SE	1,092	9.6%
		<b>11,424</b>	

Only members who selected an area of work are included on this report. Other members may not have responded to this question and are excluded from the count.

### Areas of Work



(Blanks indicate no response)

## Statistics on Areas of Interest (Members paid through >= 9/30/2016)

<u>CODE</u>	<u>DESCRIPTION</u>	<u>TOTAL*</u>	<u>% of TOTAL*</u>
TE	Teacher education	1,524	5%
CURRICULUM	Materials development/Curriculum	1,453	4%
EFL	English as a foreign language	1,393	4%
SLA	Second language acquisition	1,373	4%
AL	Applied linguistics	1,326	4%
HE	Higher education	1,309	4%
WRITING	Writing/composition	1,258	4%
IC	Multiculturalism/intercultural communications	1,240	4%
CALL	Technology in education	1,230	4%
IEP	Intensive English programs	1,217	4%
AE	Adult education	1,174	4%
PROFDEV	Professional development	1,124	3%
CONTENT	Content-based instruction	1,097	3%
SP	Speaking/pronunciation	1,030	3%
READING	Reading/literacy	1,015	3%
GRAMMAR	Grammar	966	3%
ASSESS	Assessment/testing	933	3%
ESP	English for specific purposes	898	3%
RS	Research	863	3%
PA	Program administration	687	2%
VOCAB	Vocabulary/Lexicon	679	2%
DISTANCE	Distance learning/Online Education	673	2%
BE	Bilingual education	632	2%
SOCIAL	Social/global/political concerns	581	2%
ISKILL	Integrated Skills	556	2%
LISTEN	Listening	555	2%
WORKPLACE	Workplace English instruction/Business English	531	2%
VI	Video and digital media	521	2%
EE	Elementary/primary education	501	2%
SS	Secondary education	493	1%
COMMCOLL	Community college/technical ed	442	1%
RC	Refugee concerns	379	1%
LINGUISTICS	Theoretical Linguistics	376	1%
STANDARDS	Standards	357	1%
LIT	Literature	345	1%
ITA	International teaching assistants	340	1%
FAMILY	Community/family outreach	280	1%
NNES	NNES/NES issues	273	1%
EMPLOYMENT	Employment issues/Certification	260	1%
PUBLICPOLICY	Public policy	234	1%
LDSN	Learning Disorders/Special Needs	225	1%
ACCRED	Accreditation	214	1%
MAINSTREAMING	Mainstreaming	191	1%
ARTS	Arts/Media/Science/Math/Social Science	151	0%
STYLISTICS	Stylistics	64	0%

Sorted in order of prevalence.

*\* Note: Members are encouraged to choose multiple areas of interest and some members do not choose any areas of interest. The total number of distinct members (4,161) represented in this report is less than the total number of active members as indicated elsewhere in this report.*

*Areas of interest are separate from official TESOL interest sections. Areas of interest represent distinct areas in which a member may be interested, rather than official entities in which a member is involved.*

*Areas of interest which have a very low count may be recent additions to the AOI list, or may reflect overall trends in membership.*

## Statistics on Areas of Expertise (Members paid through >= 9/30/2016)

<u>CODE</u>	<u>DESCRIPTION</u>	<u>TOTAL*</u>	<u>% of TOTAL*</u>
EFL	English as a foreign language	909	6%
CURRICULUM	Materials development/Curriculum	804	5%
AE	Adult education	768	5%
WRITING	Writing/composition	750	5%
IEP	Intensive English programs	745	5%
TE	Teacher education	718	5%
AL	Applied linguistics	690	4%
HE	Higher education	683	4%
SLA	Second language acquisition	591	4%
CONTENT	Content-based instruction	567	4%
GRAMMAR	Grammar	548	4%
IC	Multiculturalism/intercultural communications	475	3%
CALL	Technology in education	466	3%
PROFDEV	Professional development	458	3%
ESP	English for specific purposes	436	3%
SP	Speaking/pronunciation	432	3%
READING	Reading/literacy	424	3%
PA	Program administration	394	3%
ASSESS	Assessment/testing	382	2%
EE	Elementary/primary education	336	2%
ISKILL	Integrated Skills	309	2%
DISTANCE	Distance learning/Online Education	284	2%
COMMCOLL	Community college/technical ed	272	2%
RS	Research	265	2%
SS	Secondary education	260	2%
BE	Bilingual education	238	2%
WORKPLACE	Workplace English instruction/Business English	228	1%
LISTEN	Listening	223	1%
VOCAB	Vocabulary/Lexicon	203	1%
LIT	Literature	168	1%
VI	Video and digital media	143	1%
SOCIAL	Social/global/political concerns	138	1%
ITA	International teaching assistants	123	1%
NNES	NNES/NES issues	123	1%
ACCRED	Accreditation	117	1%
MAINSTREAMING	Mainstreaming	89	1%
LINGUISTICS	Theoretical Linguistics	87	1%
RC	Refugee concerns	85	1%
STANDARDS	Standards	85	1%
FAMILY	Community/family outreach	81	1%
ARTS	Arts/Media/Science/Math/Social Science	76	0%
LDSN	Learning Disorders/Special Needs	72	0%
EMPLOYMENT	Employment issues/Certification	66	0%
PUBLICPOLICY	Public policy	45	0%
STYLISTICS	Stylistics	17	0%

Sorted in order of prevalence.

*\* Note: Members are encouraged to choose multiple areas of expertise and some members do not choose any areas of expertise. The total number of distinct members (3,366) represented in this report is less than the total number of active members as indicated elsewhere in this report.*

*Areas of Expertise are separate from official TESOL interest sections or Areas of Interest. Areas of expertise represent distinct areas in which a member may be experienced in, rather than official entities in which a member is involved.*

*Areas of interest which have a very low count may be recent additions to the AOI list, or may reflect overall trends in membership.*