

5/10/2016

Membership Statistics: Grand totals for basic membership, by member type and country

		<u># Memberships</u>	<u># Members</u>
IND	BASIC		
	Existing Member(s)	4,533	4,533
	New as of 4/1/2016 or later	99	99
IND	BASIC	4,632	4,632

IND2	BASIC		
	Existing Member(s)	2,039	2,039
	New as of 4/1/2016 or later	14	14
IND2	BASIC	2,053	2,053

STU	BASIC		
	Existing Member(s)	791	791
	New as of 4/1/2016 or later	27	27
STU	BASIC	818	818

STU2	BASIC		
	Existing Member(s)	393	393
	New as of 4/1/2016 or later	5	5
STU2	BASIC	398	398

LIF	BASIC		
	Existing Member(s)	51	51
LIF	BASIC	51	51

RET	BASIC		
	Existing Member(s)	150	150
RET	BASIC	150	150

RET2	BASIC		
	Existing Member(s)	103	103
RET2	BASIC	103	103

PTR	BASIC		
	Existing Member(s)	454	454
	New as of 4/1/2016 or later	17	17
PTR	BASIC	471	471

PTR2	BASIC		
	Existing Member(s)	247	247
	New as of 4/1/2016 or later	5	5
PTR2	BASIC	252	252

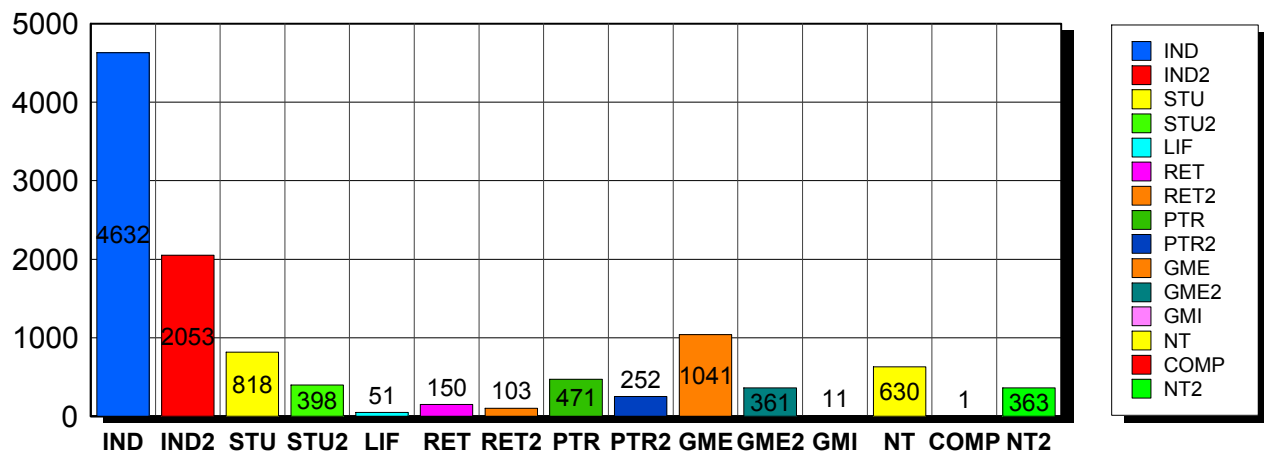
GME	BASIC		
	Existing Member(s)	959	959
	New as of 4/1/2016 or later	82	82
GME	BASIC	1,041	1,041

GME2	BASIC		
	Existing Member(s)	354	354
	New as of 4/1/2016 or later	7	7
GME2	BASIC	361	361

GMI	BASIC		

	Existing Member(s)	11	11
GMI	BASIC	11	11
<hr/>			
NT	BASIC		
	Existing Member(s)	598	598
	New as of 4/1/2016 or later	32	32
NT	BASIC	630	630
<hr/>			
COMP	BASIC		
	Existing Member(s)	1	1
COMP	BASIC	1	1
<hr/>			
NT2	BASIC		
	Existing Member(s)	357	357
	New as of 4/1/2016 or later	6	6
NT2	BASIC	363	363
<hr/>			
Grand Total:		11,335	11,335

Member Types



Note: in all general statistic reports, joint household memberships are treated as "one" member EXCEPT in the second column of this report, where joints are counted as two people, providing the most accurate count of the number of TESOL members.

		Existing Member(s)	New as of 4/1/2016 or later	Total
COMP	United States	1	0	1
	Total	1	0	1
GME	United States	37	9	46
	ALBANIA	2	0	2
	ALGERIA	3	0	3
	ARGENTINA	20	0	20
	ARMENIA	1	0	1

		Existing Member(s)	New as of 4/1/2016 or later	Total
GME	AZERBAIJAN	6	0	6
	BAHRAIN	1	0	1
	BANGLADESH	33	0	33
	BELIZE	3	0	3
	BOLIVIA	17	2	19
	BOSNIA AND	1	0	1
	BRAZIL	51	2	53
	BULGARIA	3	0	3
	CAMBODIA	4	0	4
	CAMEROON	2	0	2
	CHILE	7	1	8
	CHINA	98	7	105
	COLOMBIA	12	2	14
	COSTA RICA	13	1	14
	CROATIA	5	0	5
	DOMINICA	1	0	1
	DOMINICAN	6	10	16
	ECUADOR	89	1	90
	EGYPT	24	8	32
	EL SALVADOR	1	0	1
	GEORGIA	3	2	5
	GUATEMALA	9	3	12
	HAITI	9	1	10
	HONDURAS	5	0	5
	HONG KONG	1	0	1
	HONG KONG	1	0	1
	HUNGARY	3	0	3
	INDIA	52	15	67
	INDONESIA	3	0	3
	IRAN	3	0	3
IRAQ	3	0	3	

		Existing Member(s)	New as of 4/1/2016 or later	Total
GME	ISRAEL	1	0	1
	JAMAICA	2	0	2
	JAPAN	1	0	1
	JORDAN	1	0	1
	KAZAKHSTAN	1	0	1
	KYRGYZSTAN	1	0	1
	Lao People's	0	1	1
	LATVIA	1	0	1
	LEBANON	6	0	6
	MACEDONIA	1	0	1
	MADAGASCAR	2	0	2
	MALAYSIA	11	0	11
	MALI	1	0	1
	MAURITANIA	2	0	2
	MEXICO	44	2	46
	MOLDOVA,	2	0	2
	MONGOLIA	4	1	5
	MOROCCO	30	0	30
	MYANMAR	1	0	1
	NEPAL	11	0	11
	NEW ZEALAND	1	0	1
	NICARAGUA	3	0	3
	NIGERIA	7	0	7
	NORWAY	1	0	1
	PAKISTAN	19	2	21
	PALESTINIAN	3	0	3
	PANAMA	19	1	20
PARAGUAY	3	0	3	
PEOPLES REP	23	0	23	
PERU	90	2	92	
PHILIPPINES	15	2	17	

		Existing Member(s)	New as of 4/1/2016 or later	Total
GME	POLAND	4	0	4
	ROMANIA	2	0	2
	RUSSIA	4	0	4
	RUSSIAN	10	0	10
	RWANDA	2	0	2
	SERBIA	5	1	6
	SLOVAKIA	1	0	1
	SOUTH AFRICA	1	0	1
	SRI LANKA	4	0	4
	SUDAN	1	0	1
	SWAZILAND	1	0	1
	SYRIAN ARAB	1	0	1
	TAIWAN	0	2	2
	TAIWAN ROC	1	0	1
	TANZANIA,	0	1	1
	THAILAND	12	0	12
	TUNISIA	3	0	3
	TURKEY	22	0	22
	UKRAINE	9	0	9
	UNITED	1	0	1
	URUGUAY	5	0	5
	VENEZUELA	23	3	26
	VIET NAM	1	0	1
	VIETNAM	6	0	6
YEMEN	1	0	1	
Total	959	82	1,041	
GME2	United States	9	0	9
	AFGHANISTAN	1	0	1
	ALBANIA	1	0	1
	ANGOLA	1	0	1
	ARGENTINA	3	0	3

		Existing Member(s)	New as of 4/1/2016 or later	Total
GME2	ARMENIA	1	0	1
	BANGLADESH	2	0	2
	BELARUS	1	0	1
	BOLIVIA	4	0	4
	BRAZIL	18	0	18
	BULGARIA	4	0	4
	BURKINA FASO	1	0	1
	CAMEROON	1	0	1
	CHILE	7	0	7
	CHINA	54	1	55
	COLOMBIA	9	2	11
	COSTA RICA	5	0	5
	DOMINICAN	9	0	9
	ECUADOR	15	1	16
	EGYPT	3	0	3
	GABON	2	0	2
	GEORGIA	1	0	1
	GRENADA	2	0	2
	GUATEMALA	1	0	1
	HONDURAS	1	0	1
	INDIA	22	0	22
	INDONESIA	5	0	5
	IRAQ	1	0	1
	JORDAN	3	0	3
	KAZAKHSTAN	4	0	4
	LATVIA	2	0	2
	LEBANON	3	0	3
	LITHUANIA	1	0	1
	MADAGASCAR	1	0	1
	MALAYSIA	6	0	6
MAURITANIA	0	1	1	

		Existing Member(s)	New as of 4/1/2016 or later	Total
GME2	MAURITIUS	1	0	1
	MEXICO	19	0	19
	MONGOLIA	6	0	6
	MOROCCO	2	0	2
	MOZAMBIQUE	1	0	1
	NAMIBIA	1	0	1
	NEPAL	3	1	4
	NIGER	1	0	1
	NIGERIA	5	0	5
	PAKISTAN	4	0	4
	PANAMA	2	0	2
	PARAGUAY	1	0	1
	PEOPLES REP	2	0	2
	PERU	7	0	7
	PHILIPPINES	7	0	7
	POLAND	6	0	6
	RUSSIA	4	0	4
	RUSSIAN	6	0	6
	SENEGAL	1	0	1
	SIERRA LEONE	1	0	1
	SRI LANKA	2	0	2
	SURINAME	1	0	1
	TAIWAN ROC	2	0	2
	TAJIKISTAN	2	0	2
	THAILAND	15	0	15
	TUNISIA	1	0	1
	TURKEY	17	0	17
	UNITED	0	1	1
	URUGUAY	3	0	3
	UZBEKISTAN	19	0	19
VENEZUELA	2	0	2	

		Existing Member(s)	New as of 4/1/2016 or later	Total
GME2	VIET NAM	1	0	1
	VIETNAM	4	0	4
	YEMEN	1	0	1
	Total	354	7	361
GMI	BELARUS	1	0	1
	BRAZIL	2	0	2
	CHINA	2	0	2
	HUNGARY	1	0	1
	KOSOVO	1	0	1
	MEXICO	1	0	1
	PERU	3	0	3
	Total	11	0	11
IND	United States	3,994	90	4,084
	02453-2728	1	0	1
	ANGOLA	1	0	1
	ARGENTINA	1	0	1
	AUSTRALIA	16	0	16
	AUSTRIA	1	0	1
	BAHRAIN	1	0	1
	BERMUDA	1	0	1
	BRAZIL	4	0	4
	CANADA	112	1	113
	CHILE	2	0	2
	CHINA	6	0	6
	COLOMBIA	2	0	2
	COSTA RICA	1	0	1
	CZECH	5	0	5
	DENMARK	3	0	3
	ECUADOR	13	0	13
	EGYPT	4	1	5
	FINLAND	1	0	1

		Existing Member(s)	New as of 4/1/2016 or later	Total
IND	FRANCE	4	0	4
	GERMANY	5	0	5
	GREECE	2	0	2
	HONG KONG	4	0	4
	HONG KONG	1	0	1
	HUNGARY	2	0	2
	INDIA	2	0	2
	IRAN	1	0	1
	IRAQ	1	0	1
	IRELAND	1	0	1
	ISRAEL	3	0	3
	ITALY	5	0	5
	JAPAN	162	3	165
	JORDAN	3	0	3
	Korea, Republic	4	0	4
	KOREA,	1	0	1
	KOREA,	5	0	5
	KOSOVO	2	0	2
	KUWAIT	6	0	6
	LEBANON	1	0	1
	LIBYA	1	0	1
	MACAO	1	0	1
	MALAYSIA	1	0	1
	MEXICO	5	0	5
	NETHERLAND	3	0	3
	NEW ZEALAND	4	0	4
	NIGERIA	1	0	1
	NORWAY	5	0	5
	OMAN	5	0	5
	PAKISTAN	1	0	1
PALESTINIAN	1	0	1	

		Existing Member(s)	New as of 4/1/2016 or later	Total
IND	PARAGUAY	1	0	1
	PEOPLES REP	2	0	2
	PERU	5	0	5
	PHILIPPINES	1	0	1
	PORTUGAL	1	0	1
	QATAR	8	0	8
	SAUDI ARABIA	12	1	13
	SINGAPORE	3	0	3
	SLOVAKIA	1	0	1
	SOUTH AFRICA	2	0	2
	SOUTH KOREA	8	0	8
	SPAIN	4	0	4
	SWEDEN	6	0	6
	SWITZERLAND	1	0	1
	TAIWAN	6	1	7
	TAIWAN ROC	3	0	3
	THAILAND	3	1	4
	TRINIDAD AND	1	0	1
	UGANDA	0	1	1
	UNITED ARAB	26	0	26
	UNITED	12	0	12
	United States	3	0	3
	UNITED	6	0	6
	URUGUAY	1	0	1
	VANUATU	1	0	1
	VIET NAM	2	0	2
VIETNAM	1	0	1	
YEMEN	1	0	1	
Total	4,533	99	4,632	
IND2	United States	1,678	12	1,690
	AUSTRALIA	17	0	17

		Existing Member(s)	New as of 4/1/2016 or later	Total
IND2	AUSTRIA	2	0	2
	BAHRAIN	1	0	1
	BENIN	1	0	1
	BRAZIL	3	0	3
	CANADA	103	1	104
	CAYMAN	1	0	1
	CHILE	1	0	1
	CHINA	6	1	7
	COLOMBIA	2	0	2
	COSTA RICA	1	0	1
	CYPRUS	2	0	2
	DENMARK	1	0	1
	FINLAND	1	0	1
	FRANCE	1	0	1
	GERMANY	6	0	6
	HONG KONG	3	0	3
	HONG KONG	8	0	8
	INDIA	3	0	3
	INDONESIA	1	0	1
	IRAQ	1	0	1
	ITALY	4	0	4
	JAPAN	91	0	91
	Korea, Republic	2	0	2
	KOREA,	3	0	3
	KUWAIT	3	0	3
	Lao People's	1	0	1
	LUXEMBOURG	1	0	1
	MACAO	4	0	4
	MALAYSIA	3	0	3
	MARTINIQUE	1	0	1
NETHERLAND	1	0	1	

		Existing Member(s)	New as of 4/1/2016 or later	Total
IND2	NEW	1	0	1
	NEW ZEALAND	3	0	3
	NICARAGUA	1	0	1
	NIGERIA	1	0	1
	NORWAY	1	0	1
	OMAN	1	0	1
	QATAR	11	0	11
	ROMANIA	1	0	1
	SAUDI ARABIA	10	0	10
	SERBIA	1	0	1
	SINGAPORE	3	0	3
	SLOVAKIA	2	0	2
	SOUTH KOREA	8	0	8
	SPAIN	1	0	1
	SWITZERLAND	2	0	2
	TAIWAN	6	0	6
	TAIWAN ROC	2	0	2
	THAILAND	2	0	2
	TRINIDAD AND	1	0	1
	TURKEY	2	0	2
	UKRAINE	2	0	2
	UNITED ARAB	9	0	9
	UNITED	5	0	5
	United States	1	0	1
	UNITED	2	0	2
	URUGUAY	2	0	2
VENEZUELA	1	0	1	
Total	2,039	14	2,053	
LIF	United States	42	0	42
	AUSTRALIA	1	0	1
	CANADA	2	0	2

		Existing Member(s)	New as of 4/1/2016 or later	Total
LIF	EGYPT	1	0	1
	ISRAEL	1	0	1
	JAPAN	1	0	1
	UNITED ARAB	1	0	1
	UNITED	2	0	2
	Total	51	0	51
NT	United States	539	29	568
	AUSTRALIA	3	0	3
	AUSTRIA	1	0	1
	CANADA	11	1	12
	CHINA	2	0	2
	COLOMBIA	1	0	1
	ECUADOR	1	0	1
	GERMANY	1	0	1
	HONG KONG	1	0	1
	HONG KONG	1	0	1
	IRAQ	1	0	1
	ITALY	2	0	2
	JAPAN	12	0	12
	KUWAIT	1	0	1
	MARTINIQUE	1	0	1
	MATARA	1	0	1
	MEXICO	2	0	2
	PALESTINIAN	0	2	2
	PERU	1	0	1
	QATAR	3	0	3
	RUSSIA	1	0	1
	RUSSIAN	1	0	1
	SINGAPORE	1	0	1
SOUTH KOREA	3	0	3	
SPAIN	1	0	1	

		Existing Member(s)	New as of 4/1/2016 or later	Total
NT	THAILAND	1	0	1
	TURKEY	1	0	1
	UNITED	4	0	4
	Total	598	32	630
NT2	United States	326	5	331
	AUSTRALIA	4	0	4
	CANADA	10	0	10
	HONG KONG	1	1	2
	HUNGARY	1	0	1
	ITALY	1	0	1
	JAPAN	2	0	2
	KOREA,	1	0	1
	KUWAIT	1	0	1
	MACAO	1	0	1
	SAUDI ARABIA	2	0	2
	SINGAPORE	2	0	2
	SOUTH KOREA	1	0	1
	TAIWAN	2	0	2
	UNITED ARAB	1	0	1
	UNITED	1	0	1
	Total	357	6	363
PTR	United States	357	13	370
	AUSTRALIA	1	0	1
	BRAZIL	1	0	1
	CANADA	11	0	11
	CHILE	1	0	1
	CHINA	6	0	6
	COLOMBIA	3	0	3
	COSTA RICA	3	0	3
	DOMINICAN	2	0	2
	ECUADOR	10	0	10

		Existing Member(s)	New as of 4/1/2016 or later	Total
PTR	EGYPT	1	0	1
	FRANCE	1	0	1
	GERMANY	1	0	1
	HAITI	1	0	1
	ICELAND	1	0	1
	INDONESIA	2	0	2
	IRAQ	1	0	1
	JAPAN	9	0	9
	KUWAIT	1	0	1
	Lao People's	1	0	1
	LITHUANIA	1	0	1
	MACAO	1	0	1
	MEXICO	1	0	1
	MOROCCO	1	0	1
	NEW ZEALAND	1	0	1
	NICARAGUA	2	0	2
	NIGERIA	1	0	1
	PAKISTAN	1	0	1
	PANAMA	0	1	1
	PERU	1	0	1
	PHILIPPINES	2	0	2
	POLAND	1	0	1
	Puerto Rico	1	2	3
	SAUDI ARABIA	1	0	1
	SENEGAL	0	1	1
	SINGAPORE	1	0	1
	SLOVENIA	1	0	1
	SOUTH AFRICA	1	0	1
	SOUTH KOREA	1	0	1
	SPAIN	2	0	2
TANZANIA,	4	0	4	

		Existing Member(s)	New as of 4/1/2016 or later	Total
PTR	THAILAND	2	0	2
	TURKEY	5	0	5
	UNITED ARAB	3	0	3
	UNITED	4	0	4
	VENEZUELA	1	0	1
	Total	454	17	471
PTR2	United States	197	5	202
	BRAZIL	2	0	2
	CANADA	11	0	11
	CHILE	1	0	1
	CHINA	3	0	3
	COLOMBIA	1	0	1
	CZECH	1	0	1
	GERMANY	1	0	1
	HONG KONG	1	0	1
	INDONESIA	1	0	1
	ISRAEL	1	0	1
	ITALY	1	0	1
	JAPAN	2	0	2
	MACAO	1	0	1
	MEXICO	1	0	1
	PHILIPPINES	1	0	1
	POLAND	1	0	1
	SAUDI ARABIA	8	0	8
	TAIWAN	5	0	5
	THAILAND	1	0	1
	TURKEY	5	0	5
	UNITED ARAB	1	0	1
Total	247	5	252	
RET	United States	136	0	136
	BRAZIL	1	0	1

		Existing Member(s)	New as of 4/1/2016 or later	Total
RET	CANADA	4	0	4
	COLOMBIA	1	0	1
	GERMANY	1	0	1
	ISRAEL	1	0	1
	JAPAN	3	0	3
	MEXICO	1	0	1
	PORTUGAL	1	0	1
	SRI LANKA	1	0	1
	Total	150	0	150
RET2	United States	88	0	88
	AUSTRALIA	1	0	1
	CANADA	1	0	1
	GERMANY	1	0	1
	ISRAEL	3	0	3
	JAPAN	4	0	4
	OMAN	1	0	1
	SOUTH KOREA	1	0	1
	SPAIN	1	0	1
	UNITED	2	0	2
	Total	103	0	103
STU	United States	704	23	727
	AUSTRALIA	10	0	10
	BELGIUM	1	0	1
	BRAZIL	1	1	2
	CANADA	14	0	14
	CHINA	3	0	3
	COLOMBIA	1	0	1
	ECUADOR	1	0	1
	GERMANY	2	0	2
	GHANA	1	0	1
	GUATEMALA	0	1	1

		Existing Member(s)	New as of 4/1/2016 or later	Total
STU	HAITI	1	0	1
	HONG KONG	2	0	2
	HONG KONG	3	0	3
	INDONESIA	1	0	1
	JAPAN	4	0	4
	MALAYSIA	1	0	1
	MEXICO	7	0	7
	NEW ZEALAND	2	0	2
	PHILIPPINES	2	0	2
	POLAND	1	0	1
	RUSSIAN	2	0	2
	SAUDI ARABIA	3	2	5
	SOUTH AFRICA	1	0	1
	SOUTH KOREA	1	0	1
	TAIWAN	1	0	1
	THAILAND	3	0	3
	TURKEY	9	0	9
	UNITED ARAB	1	0	1
	UNITED	7	0	7
	UNITED	1	0	1
Total	791	27	818	
STU2	United States	346	5	351
	ALBANIA	2	0	2
	AUSTRALIA	3	0	3
	BRAZIL	1	0	1
	CAMEROON	2	0	2
	CANADA	17	0	17
	CHINA	1	0	1
	FRANCE	1	0	1
	GERMANY	1	0	1
	HONG KONG	2	0	2

		Existing Member(s)	New as of 4/1/2016 or later	Total
STU2	HONG KONG	1	0	1
	INDONESIA	1	0	1
	ISRAEL	1	0	1
	JAPAN	2	0	2
	Korea, Republic	1	0	1
	KOREA,	1	0	1
	LATVIA	1	0	1
	MEXICO	1	0	1
	NEPAL	1	0	1
	OMAN	1	0	1
	Puerto Rico	1	0	1
	SINGAPORE	1	0	1
	UNITED	3	0	3
	United States	1	0	1
	Total	393	5	398
Total	11,041	294	11,335	

This report is based on members paid through 4/30/2016 or later.

Country/State/Province	Total	
02453-2728	1	0.0%
AFGHANISTAN	1	0.0%
ALBANIA	5	0.0%
ALGERIA	3	0.0%
ANGOLA	2	0.0%
ARGENTINA	24	0.2%
ARMENIA	2	0.0%
AUSTRALIA	56	0.5%
AUSTRIA	4	0.0%
AZERBAIJAN	6	0.1%
BAHRAIN	3	0.0%
BANGLADESH	35	0.3%
BELARUS	2	0.0%
BELGIUM	1	0.0%
BELIZE	3	0.0%
BENIN	1	0.0%
BERMUDA	1	0.0%
BOLIVIA	23	0.2%
BOSNIA AND HERZEGOVINA	1	0.0%
BRAZIL	87	0.8%
BULGARIA	7	0.1%
BURKINA FASO	1	0.0%
CAMBODIA	4	0.0%
CAMEROON	5	0.0%
CANADA		
<i>CANADA</i>	<i>4</i>	
<i>CANADA Alberta</i>	<i>27</i>	
<i>CANADA British Columbia</i>	<i>79</i>	
<i>CANADA Manitoba</i>	<i>11</i>	
<i>CANADA New Brunswick</i>	<i>9</i>	
<i>CANADA Northwest Territories</i>	<i>1</i>	
<i>CANADA Nova Scotia</i>	<i>9</i>	
<i>CANADA Ontario</i>	<i>123</i>	
<i>CANADA Quebec</i>	<i>23</i>	
<i>CANADA Saskatchewan</i>	<i>13</i>	
CANADA	299	2.6%
CAYMAN ISLANDS	1	0.0%
CHILE	20	0.2%
CHINA	190	1.7%
COLOMBIA	36	0.3%
COSTA RICA	24	0.2%
CROATIA	5	0.0%
CYPRUS	2	0.0%
CZECH REPUBLIC	6	0.1%
DENMARK	4	0.0%
DOMINICA	1	0.0%
DOMINICAN REPUBLIC	27	0.2%
ECUADOR	131	1.2%
EGYPT	42	0.4%
EL SALVADOR	1	0.0%
FINLAND	2	0.0%
FRANCE	7	0.1%
GABON	2	0.0%
GEORGIA	6	0.1%
GERMANY	19	0.2%
GHANA	1	0.0%
GREECE	2	0.0%

GRENADA	2	0.0%
GUATEMALA	14	0.1%
HAITI	12	0.1%
HONDURAS	6	0.1%
HONG KONG	14	0.1%
HONG KONG SAR CHINA	17	0.1%
HUNGARY	7	0.1%
ICELAND	1	0.0%
INDIA	94	0.8%
INDONESIA	14	0.1%
IRAN	4	0.0%
IRAQ	8	0.1%
IRELAND	1	0.0%
ISRAEL	11	0.1%
ITALY	13	0.1%
JAMAICA	2	0.0%
JAPAN	296	2.6%
JORDAN	7	0.1%
KAZAKHSTAN	5	0.0%
Korea, Republic Of	7	0.1%
KOREA, REPUBLIC OF	1	0.0%
KOREA, REPUBLIC OF	10	0.1%
KOSOVO (UNMIK)	3	0.0%
KUWAIT	12	0.1%
KYRGYZSTAN	1	0.0%
Lao People's Dem Republic	3	0.0%
LATVIA	4	0.0%
LEBANON	10	0.1%
LIBYA	1	0.0%
LITHUANIA	2	0.0%
LUXEMBOURG	1	0.0%
MACAO	8	0.1%
MACEDONIA	1	0.0%
MADAGASCAR	3	0.0%
MALAYSIA	22	0.2%
MALI	1	0.0%
MARTINIQUE	2	0.0%
MATARA	1	0.0%
MAURITANIA	3	0.0%
MAURITIUS	1	0.0%
MEXICO	84	0.7%
MOLDOVA, REPUBLIC OF	2	0.0%
MONGOLIA	11	0.1%
MOROCCO	33	0.3%
MOZAMBIQUE	1	0.0%
MYANMAR	1	0.0%
NAMIBIA	1	0.0%
NEPAL	16	0.1%
NETHERLANDS	4	0.0%
NEW CALEDONIA	1	0.0%
NEW ZEALAND	11	0.1%
NICARAGUA	6	0.1%
NIGER	1	0.0%
NIGERIA	15	0.1%
NORWAY	7	0.1%
OMAN	8	0.1%
PAKISTAN	27	0.2%
PALESTINIAN TERRITORY	6	0.1%
PANAMA	23	0.2%
PARAGUAY	5	0.0%
PEOPLES REP OF CHINA	27	0.2%

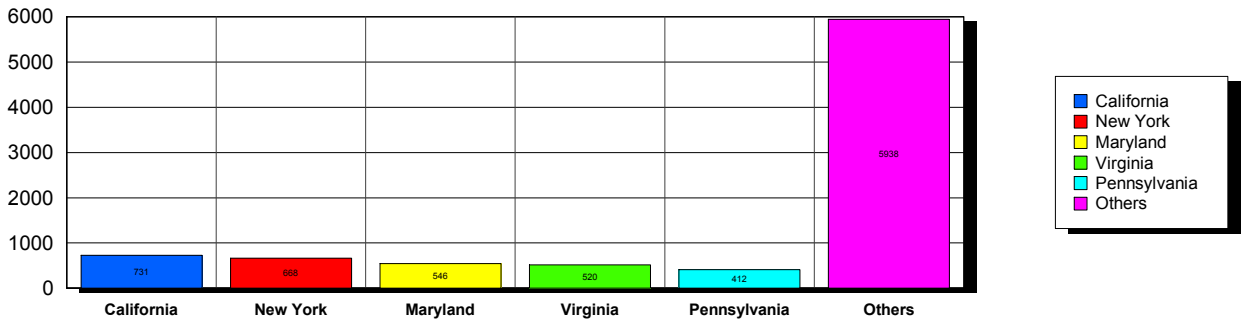
PERU		109	1.0%
PHILIPPINES		30	0.3%
POLAND		13	0.1%
PORTUGAL		2	0.0%
Puerto Rico		4	0.0%
QATAR		22	0.2%
ROMANIA		3	0.0%
RUSSIA		9	0.1%
RUSSIAN FEDERATION		19	0.2%
RWANDA		2	0.0%
SAUDI ARABIA		39	0.3%
SENEGAL		2	0.0%
SERBIA		7	0.1%
SIERRA LEONE		1	0.0%
SINGAPORE		11	0.1%
SLOVAKIA		4	0.0%
SLOVENIA		1	0.0%
SOUTH AFRICA		5	0.0%
SOUTH KOREA		23	0.2%
SPAIN		9	0.1%
SRI LANKA		7	0.1%
SUDAN		1	0.0%
SURINAME		1	0.0%
SWAZILAND		1	0.0%
SWEDEN		6	0.1%
SWITZERLAND		3	0.0%
SYRIAN ARAB REPUBLIC		1	0.0%
TAIWAN		23	0.2%
TAIWAN ROC		8	0.1%
TAJKISTAN		2	0.0%
TANZANIA, UNITED REPUBLIC		5	0.0%
THAILAND		40	0.4%
TRINIDAD AND TOBAGO		2	0.0%
TUNISIA		4	0.0%
TURKEY		61	0.5%
UGANDA		1	0.0%
UKRAINE		11	0.1%
UNITED ARAB EMIRATES		42	0.4%
UNITED KINGDOM		38	0.3%
United States		5	0.0%
UNITED STATES OF AMERICA		13	0.1%
URUGUAY		11	0.1%
USA			
<i>USA</i>		<i>63</i>	
<i>USA</i>	<i>Alabama</i>	<i>92</i>	
<i>USA</i>	<i>Alaska</i>	<i>14</i>	
<i>USA</i>	<i>American Embassy</i>	<i>12</i>	
<i>USA</i>	<i>Arizona</i>	<i>162</i>	
<i>USA</i>	<i>Arkansas</i>	<i>56</i>	
<i>USA</i>	<i>Armed Forces</i>	<i>8</i>	
<i>USA</i>	<i>Armed Frces Americas</i>	<i>2</i>	
<i>USA</i>	<i>British Columbia</i>	<i>2</i>	
<i>USA</i>	<i>California</i>	<i>717</i>	
<i>USA</i>	<i>Colorado</i>	<i>136</i>	
<i>USA</i>	<i>Connecticut</i>	<i>134</i>	
<i>USA</i>	<i>Delaware</i>	<i>89</i>	
<i>USA</i>	<i>District of Columbia</i>	<i>197</i>	
<i>USA</i>	<i>Florida</i>	<i>339</i>	
<i>USA</i>	<i>Georgia</i>	<i>161</i>	
<i>USA</i>	<i>Guam</i>	<i>1</i>	
<i>USA</i>	<i>Hawaii</i>	<i>54</i>	

USA	Idaho	47	
USA	Illinois	306	
USA	Indiana	154	
USA	Iowa	93	
USA	Kansas	146	
USA	Kentucky	86	
USA	Louisiana	46	
USA	Maine	49	
USA	Maryland	532	
USA	Massachusetts	322	
USA	Michigan	244	
USA	Minnesota	125	
USA	Mississippi	64	
USA	Missouri	195	
USA	Montana	12	
USA	Nebraska	56	
USA	Nevada	40	
USA	New Hampshire	55	
USA	New Jersey	259	
USA	New Mexico	48	
USA	New York	657	
USA	North Carolina	176	
USA	North Dakota	20	
USA	Ohio	275	
USA	Oklahoma	53	
USA	Ontario	1	
USA	Oregon	194	
USA	Pennsylvania	406	
USA	Prince Edward Island	1	
USA	Puerto Rico	20	
USA	Rhode Island	56	
USA	Saskatchewan	1	
USA	South Carolina	55	
USA	South Dakota	14	
USA	Tennessee	108	
USA	Texas	392	
USA	Utah	83	
USA	Vermont	63	
USA	Virginia	508	
USA	Washington	267	
USA	West Virginia	39	
USA	Wisconsin	128	
USA	Wyoming	10	
USA		8,645	76.3%
UZBEKISTAN		19	0.2%
VANUATU		1	0.0%
VENEZUELA		30	0.3%
VIET NAM		4	0.0%
VIETNAM		11	0.1%
YEMEN		3	0.0%
Grand Total:		11,335	

156 distinct countries represented.

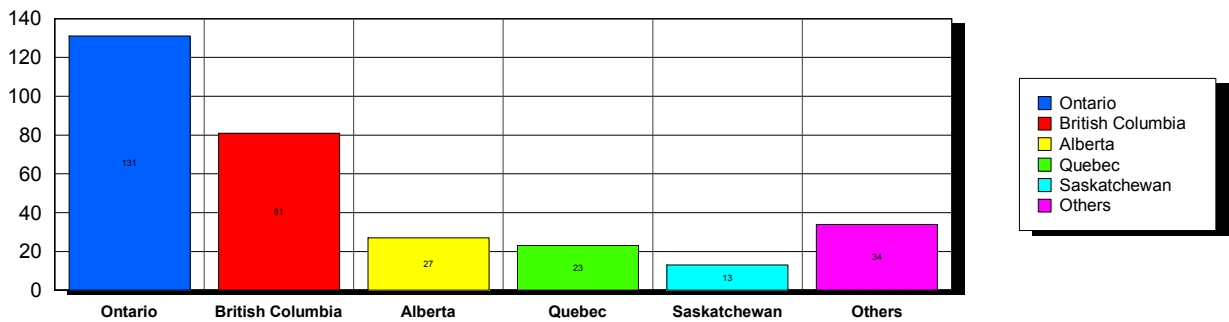
USA

Top 5 States per Country

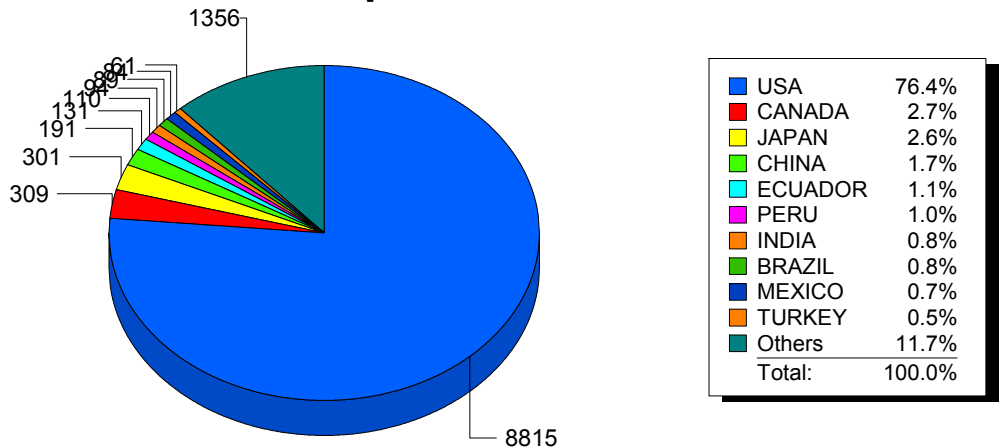


CANADA

Top 5 States per Country



Top 10 Countries



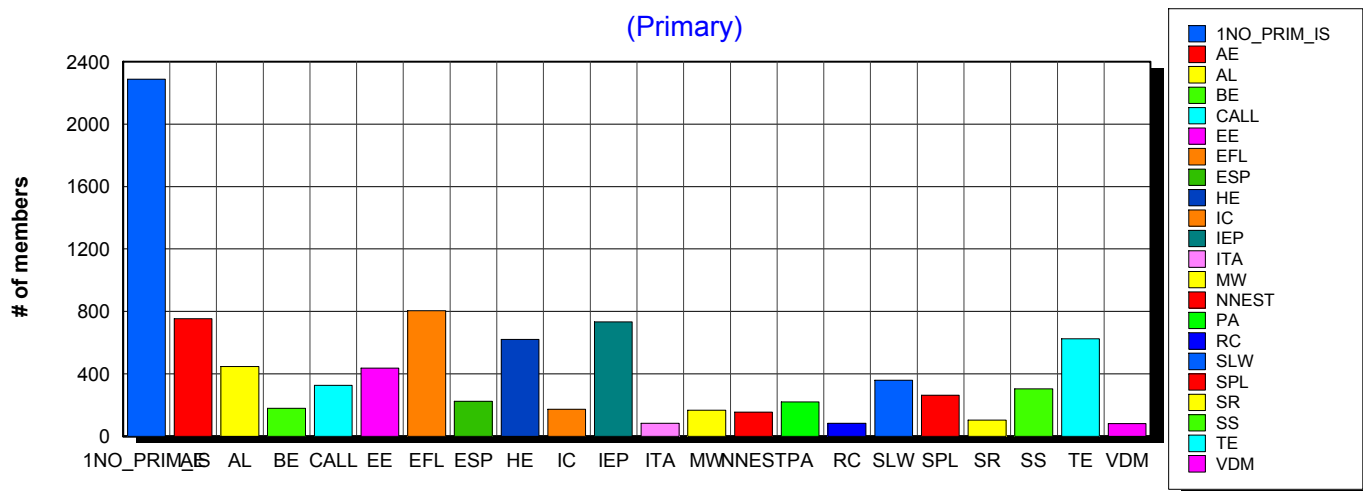
5/10/2016 **Basic statistics on Primary vs. other memberships in interest sections. For members paid through 4/30/2016 or later.**

		<i>Primary versus other</i>		
No Primary Interest Section	7.3%	2,301	2,289	12
Adult Education	6.2%	1,962	753	1,209
Applied Linguistics	5.8%	1,820	446	1,374
Bilingual Education	3.1%	962	178	784
Computer-Assisted Language Learning	5.1%	1,588	327	1,261
Elementary Education	3.2%	1,007	436	571
English as a Foreign Language	6.8%	2,147	805	1,342
English for Specific Purposes	4.4%	1,379	224	1,155
Higher Education	6.2%	1,945	620	1,325
Intercultural Communication	4.8%	1,504	172	1,332
Intensive English Programs	6.2%	1,931	732	1,199
International Teaching Assistants	1.9%	594	82	512
Materials Writers	3.4%	1,063	167	896
Nonnative English Speakers in TESOL	2.8%	892	155	737
Program Administration	3.5%	1,114	219	895
Refugee Concerns	2.2%	695	82	613
Second Language Writing	6.1%	1,916	359	1,557
Speech, Pronunciation, and Listening	5.3%	1,674	262	1,412
Social Responsibility	2.2%	689	104	585
Secondary Schools	2.8%	881	304	577
Teacher Education	7.2%	2,245	624	1,621
Video & Digital Media	3.5%	1,089	81	1,008
<i>9,437 distinct members</i>		Total # of IS memberships	31,398	9,421 21,977

The total count is the number of IS memberships total and may either be LESS or MORE than the actual number of individual members of TESOL. Due to open access to Interest Sections, these numbers may fluctuate considerably each month. For instance, one member may have selected four interest sections, while some members may belong to none.

Interest Sections

(Primary)

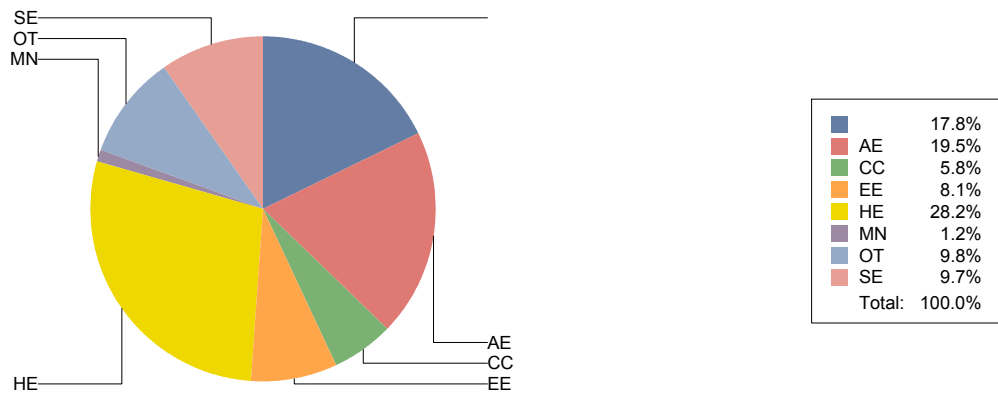


Basic Statistics on Area of Work (Members paid through >= 4/30/2016)

		2,005	17.8%
Adult Education	AE	2,200	19.5%
Community/2yr College	CC	653	5.8%
Elementary Education	EE	916	8.1%
Postsecondary Education	HE	3,179	28.2%
Mainstream	MN	138	1.2%
Other	OT	1,105	9.8%
Secondary Education	SE	1,093	9.7%
		11,289	

Only members who selected an area of work are included on this report. Other members may not have responded to this question and are excluded from the count.

Areas of Work



(Blanks indicate no response)

Statistics on Areas of Interest (Members paid through >= 4/30/2016)

<u>CODE</u>	<u>DESCRIPTION</u>	<u>TOTAL*</u>	<u>% of TOTAL*</u>
TE	Teacher education	1,551	5%
CURRICULUM	Materials development/Curriculum	1,502	4%
EFL	English as a foreign language	1,440	4%
SLA	Second language acquisition	1,416	4%
AL	Applied linguistics	1,359	4%
HE	Higher education	1,304	4%
WRITING	Writing/composition	1,298	4%
IC	Multiculturalism/intercultural communications	1,293	4%
CALL	Technology in education	1,266	4%
IEP	Intensive English programs	1,227	4%
AE	Adult education	1,215	4%
PROFDEV	Professional development	1,160	3%
CONTENT	Content-based instruction	1,137	3%
SP	Speaking/pronunciation	1,061	3%
READING	Reading/literacy	1,047	3%
GRAMMAR	Grammar	998	3%
ASSESS	Assessment/testing	971	3%
ESP	English for specific purposes	922	3%
RS	Research	889	3%
PA	Program administration	706	2%
DISTANCE	Distance learning/Online Education	703	2%
VOCAB	Vocabulary/Lexicon	696	2%
BE	Bilingual education	651	2%
SOCIAL	Social/global/political concerns	600	2%
ISKILL	Integrated Skills	573	2%
LISTEN	Listening	572	2%
WORKPLACE	Workplace English instruction/Business English	551	2%
VI	Video and digital media	546	2%
EE	Elementary/primary education	523	2%
SS	Secondary education	502	1%
COMMCOLL	Community college/technical ed	449	1%
RC	Refugee concerns	388	1%
LINGUISTICS	Theoretical Linguistics	385	1%
STANDARDS	Standards	375	1%
LIT	Literature	349	1%
ITA	International teaching assistants	345	1%
FAMILY	Community/family outreach	285	1%
NNES	NNES/NES issues	283	1%
EMPLOYMENT	Employment issues/Certification	271	1%
PUBLICPOLICY	Public policy	241	1%
ACCRED	Accreditation	230	1%
LDSN	Learning Disorders/Special Needs	230	1%
MAINSTREAMING	Mainstreaming	206	1%
ARTS	Arts/Media/Science/Math/Social Science	161	0%
STYLISTICS	Stylistics	63	0%

Sorted in order of prevalence.

** Note: Members are encouraged to choose multiple areas of interest and some members do not choose any areas of interest. The total number of distinct members (4,290) represented in this report is less than the total number of active members as indicated elsewhere in this report.*

Areas of interest are separate from official TESOL interest sections. Areas of interest represent distinct areas in which a member may be interested, rather than official entities in which a member is involved.

Areas of interest which have a very low count may be recent additions to the AOI list, or may reflect overall trends in membership.

Statistics on Areas of Expertise (Members paid through >= 4/30/2016)

<u>CODE</u>	<u>DESCRIPTION</u>	<u>TOTAL*</u>	<u>% of TOTAL*</u>
EFL	English as a foreign language	939	6%
CURRICULUM	Materials development/Curriculum	829	5%
AE	Adult education	807	5%
WRITING	Writing/composition	775	5%
IEP	Intensive English programs	748	5%
TE	Teacher education	736	5%
AL	Applied linguistics	717	5%
HE	Higher education	683	4%
SLA	Second language acquisition	616	4%
CONTENT	Content-based instruction	588	4%
GRAMMAR	Grammar	563	4%
CALL	Technology in education	497	3%
IC	Multiculturalism/intercultural communications	489	3%
PROFDEV	Professional development	467	3%
ESP	English for specific purposes	457	3%
SP	Speaking/pronunciation	437	3%
READING	Reading/literacy	434	3%
PA	Program administration	401	3%
ASSESS	Assessment/testing	393	2%
EE	Elementary/primary education	344	2%
ISKILL	Integrated Skills	320	2%
DISTANCE	Distance learning/Online Education	299	2%
COMMCOLL	Community college/technical ed	278	2%
SS	Secondary education	276	2%
RS	Research	271	2%
BE	Bilingual education	258	2%
WORKPLACE	Workplace English instruction/Business English	240	2%
LISTEN	Listening	230	1%
VOCAB	Vocabulary/Lexicon	202	1%
LIT	Literature	180	1%
SOCIAL	Social/global/political concerns	144	1%
VI	Video and digital media	143	1%
ITA	International teaching assistants	124	1%
NNES	NNES/NES issues	124	1%
ACCRED	Accreditation	121	1%
LINGUISTICS	Theoretical Linguistics	90	1%
MAINSTREAMING	Mainstreaming	89	1%
STANDARDS	Standards	89	1%
RC	Refugee concerns	82	1%
FAMILY	Community/family outreach	81	1%
ARTS	Arts/Media/Science/Math/Social Science	76	0%
LDSN	Learning Disorders/Special Needs	75	0%
EMPLOYMENT	Employment issues/Certification	71	0%
PUBLICPOLICY	Public policy	50	0%
STYLISTICS	Stylistics	15	0%

Sorted in order of prevalence.

** Note: Members are encouraged to choose multiple areas of expertise and some members do not choose any areas of expertise. The total number of distinct members (3,461) represented in this report is less than the total number of active members as indicated elsewhere in this report.*

Areas of Expertise are separate from official TESOL interest sections or Areas of Interest. Areas of expertise represent distinct areas in which a member may be experienced in, rather than official entities in which a member is involved.

Areas of interest which have a very low count may be recent additions to the AOI list, or may reflect overall trends in membership.