

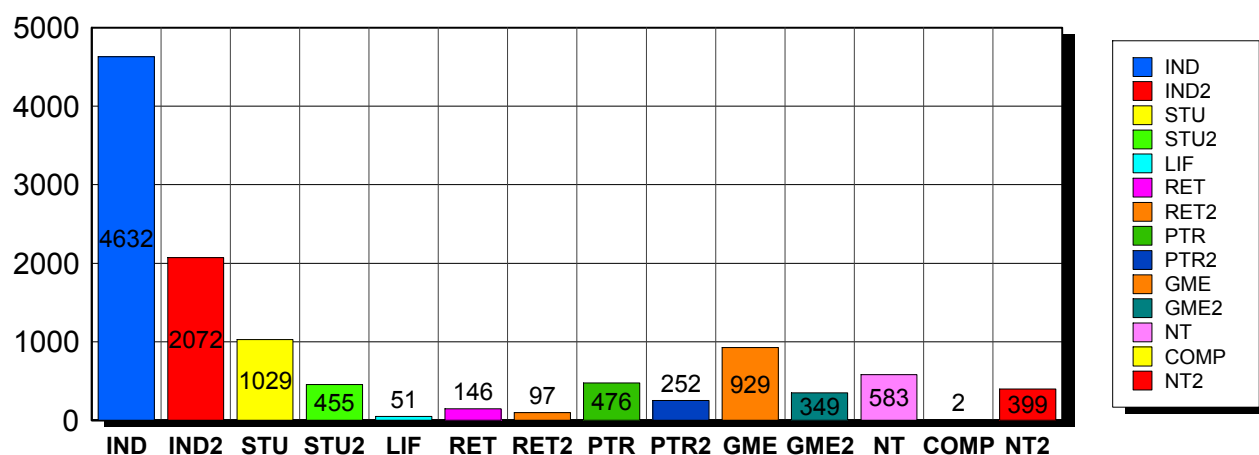
8/13/2015

## Membership Statistics: Grand totals for basic membership, by member type and country

		<u># Memberships</u>	<u># Members</u>
<b>IND</b>	<b>BASIC</b>		
	Existing Member(s)	4,572	4,572
	New as of 7/1/2015 or later	60	60
<b>IND</b>	<b>BASIC</b>	<b>4,632</b>	<b>4,632</b>
-----			
<b>IND2</b>	<b>BASIC</b>		
	Existing Member(s)	2,063	2,063
	New as of 7/1/2015 or later	9	9
<b>IND2</b>	<b>BASIC</b>	<b>2,072</b>	<b>2,072</b>
-----			
<b>STU</b>	<b>BASIC</b>		
	Existing Member(s)	1,005	1,005
	New as of 7/1/2015 or later	24	24
<b>STU</b>	<b>BASIC</b>	<b>1,029</b>	<b>1,029</b>
-----			
<b>STU2</b>	<b>BASIC</b>		
	Existing Member(s)	452	452
	New as of 7/1/2015 or later	3	3
<b>STU2</b>	<b>BASIC</b>	<b>455</b>	<b>455</b>
-----			
<b>LIF</b>	<b>BASIC</b>		
	Existing Member(s)	51	51
<b>LIF</b>	<b>BASIC</b>	<b>51</b>	<b>51</b>
-----			
<b>RET</b>	<b>BASIC</b>		
	Existing Member(s)	146	146
<b>RET</b>	<b>BASIC</b>	<b>146</b>	<b>146</b>
-----			
<b>RET2</b>	<b>BASIC</b>		
	Existing Member(s)	96	96
	New as of 7/1/2015 or later	1	1
<b>RET2</b>	<b>BASIC</b>	<b>97</b>	<b>97</b>
-----			
<b>PTR</b>	<b>BASIC</b>		
	Existing Member(s)	468	468
	New as of 7/1/2015 or later	8	8
<b>PTR</b>	<b>BASIC</b>	<b>476</b>	<b>476</b>
-----			
<b>PTR2</b>	<b>BASIC</b>		
	Existing Member(s)	247	247
	New as of 7/1/2015 or later	5	5
<b>PTR2</b>	<b>BASIC</b>	<b>252</b>	<b>252</b>
-----			
<b>GME</b>	<b>BASIC</b>		
	Existing Member(s)	896	896
	New as of 7/1/2015 or later	33	33
<b>GME</b>	<b>BASIC</b>	<b>929</b>	<b>929</b>
-----			
<b>GME2</b>	<b>BASIC</b>		
	Existing Member(s)	330	330
	New as of 7/1/2015 or later	19	19
<b>GME2</b>	<b>BASIC</b>	<b>349</b>	<b>349</b>
-----			

<b>NT</b>	<b>BASIC</b>		
	Existing Member(s)	563	563
	New as of 7/1/2015 or later	20	20
<b>NT</b>	<b>BASIC</b>	<b>583</b>	<b>583</b>
<hr/>			
<b>COMP</b>	<b>BASIC</b>		
	Existing Member(s)	2	2
<b>COMP</b>	<b>BASIC</b>	<b>2</b>	<b>2</b>
<hr/>			
<b>NT2</b>	<b>BASIC</b>		
	Existing Member(s)	395	395
	New as of 7/1/2015 or later	4	4
<b>NT2</b>	<b>BASIC</b>	<b>399</b>	<b>399</b>
<hr/>			
<b>Grand Total:</b>		<b>11,472</b>	<b>11,472</b>

## Member Types



Note: in all general statistic reports, joint household memberships are treated as "one" member EXCEPT in the second column of this report, where joints are counted as two people, providing the most accurate count of the number of TESOL members.

		Existing Member(s)	New as of 7/1/2015 or later	Total
COMP	United States	2	0	2
	<b>Total</b>	2	0	2
GME	United States	54	0	54
	ALBANIA	2	0	2
	ALGERIA	2	0	2
	ANGOLA	1	0	1
	ARGENTINA	18	0	18
	AZERBAIJAN	4	0	4
	BANGLADESH	25	1	26

		Existing Member(s)	New as of 7/1/2015 or later	Total
GME	BARBADOS	1	0	1
	BELIZE	0	2	2
	BOLIVIA	8	0	8
	BOSNIA AND	1	0	1
	BRAZIL	58	1	59
	BULGARIA	2	0	2
	BURKINA FASO	2	0	2
	CAMBODIA	1	1	2
	CAMEROON	2	0	2
	CANADA	1	0	1
	CHILE	7	0	7
	CHINA	146	1	147
	COLOMBIA	12	0	12
	COSTA RICA	8	0	8
	CROATIA	3	0	3
	DOMINICAN	5	0	5
	ECUADOR	58	11	69
	EGYPT	18	1	19
	GEORGIA	3	1	4
	GHANA	1	0	1
	GRENADA	2	0	2
	GUATEMALA	8	0	8
	HAITI	18	0	18
	HONDURAS	2	0	2
	HONG KONG	1	0	1
	HONG KONG	1	0	1
	INDIA	44	0	44
	INDONESIA	3	0	3
	IRAN	5	0	5
	IRAQ	2	0	2
JAMAICA	2	0	2	

		Existing Member(s)	New as of 7/1/2015 or later	Total
GME	JORDAN	1	0	1
	KAZAKHSTAN	1	0	1
	KENYA	1	0	1
	KOSOVO	2	0	2
	KUWAIT	1	0	1
	KYRGYZSTAN	2	0	2
	LEBANON	3	0	3
	MACAO	1	0	1
	MADAGASCAR	3	0	3
	MALAYSIA	13	0	13
	MALI	2	0	2
	MAURITANIA	10	0	10
	MEXICO	55	0	55
	MOLDOVA,	3	0	3
	MONGOLIA	22	0	22
	MOROCCO	23	0	23
	MOZAMBIQUE	1	0	1
	MYANMAR	1	0	1
	NEPAL	9	0	9
	NEW ZEALAND	1	0	1
	NICARAGUA	2	0	2
	NIGER	1	0	1
	NIGERIA	10	0	10
	PAKISTAN	6	8	14
	PALESTINIAN	2	0	2
	PANAMA	13	0	13
	PARAGUAY	1	0	1
	PEOPLES REP	7	0	7
	PERU	55	0	55
	PHILIPPINES	6	1	7
POLAND	5	0	5	

		Existing Member(s)	New as of 7/1/2015 or later	Total
GME	RUSSIA	7	0	7
	RUSSIAN	5	0	5
	RWANDA	2	0	2
	SAUDI ARABIA	1	0	1
	SERBIA	1	0	1
	SLOVAKIA	0	1	1
	SOUTH AFRICA	3	0	3
	SUDAN	2	0	2
	SWAZILAND	1	0	1
	SYRIAN ARAB	0	1	1
	TAIWAN ROC	5	0	5
	TANZANIA,	1	0	1
	THAILAND	16	0	16
	TUNISIA	10	0	10
	TURKEY	11	2	13
	UKRAINE	5	0	5
	UNITED	1	0	1
	United States	3	0	3
	UNITED	2	0	2
	URUGUAY	6	0	6
	UZBEKISTAN	1	0	1
	VENEZUELA	13	1	14
VIETNAM	5	0	5	
YEMEN	1	0	1	
<b>Total</b>	<b>896</b>	<b>33</b>	<b>929</b>	
GME2	United States	3	0	3
	AFGHANISTAN	1	0	1
	ALBANIA	7	0	7
	ANGOLA	1	0	1
	ARGENTINA	5	0	5
	ARMENIA	2	0	2

		Existing Member(s)	New as of 7/1/2015 or later	Total
GME2	AZERBAIJAN	1	0	1
	BANGLADESH	3	0	3
	BELARUS	1	0	1
	BOLIVIA	2	0	2
	BRAZIL	23	0	23
	BURKINA FASO	1	0	1
	CAMEROON	1	0	1
	CHILE	2	0	2
	CHINA	47	1	48
	COLOMBIA	11	0	11
	COSTA RICA	7	0	7
	CUBA	1	0	1
	DOMINICAN	3	0	3
	ECUADOR	7	2	9
	EGYPT	2	0	2
	GABON	1	0	1
	GEORGIA	2	0	2
	GERMANY	1	0	1
	GRENADA	1	0	1
	GUATEMALA	1	0	1
	HONDURAS	1	0	1
	HONG KONG	1	0	1
	INDIA	23	0	23
	INDONESIA	5	0	5
	IRAQ	1	0	1
	JORDAN	3	0	3
	KAZAKHSTAN	2	0	2
	KOSOVO	1	0	1
	LATVIA	1	0	1
	LEBANON	3	0	3
LITHUANIA	1	0	1	

		Existing Member(s)	New as of 7/1/2015 or later	Total
GME2	MADAGASCAR	1	0	1
	MALAYSIA	7	0	7
	MALDIVES	1	0	1
	MARSHALL	1	0	1
	MAURITIUS	1	0	1
	MEXICO	27	0	27
	MONGOLIA	5	0	5
	MOROCCO	2	0	2
	NEPAL	2	0	2
	NIGERIA	5	0	5
	PAKISTAN	4	1	5
	PANAMA	2	0	2
	PARAGUAY	1	0	1
	PEOPLES REP	1	1	2
	PERU	5	0	5
	PHILIPPINES	9	0	9
	POLAND	5	0	5
	RUSSIA	1	0	1
	RUSSIAN	3	0	3
	SENEGAL	1	0	1
	SIERRA LEONE	1	0	1
	SURINAME	1	0	1
	SYRIAN ARAB	1	0	1
	TAIWAN ROC	2	0	2
	TAJKISTAN	2	0	2
	THAILAND	15	0	15
	TUNISIA	2	0	2
	TURKEY	23	0	23
	UNITED	1	0	1
	United States	1	0	1
UNITED	3	0	3	

		Existing Member(s)	New as of 7/1/2015 or later	Total
GME2	URUGUAY	2	0	2
	UZBEKISTAN	6	13	19
	VANUATU	1	0	1
	VENEZUELA	2	0	2
	VIET NAM	1	0	1
	VIETNAM	2	1	3
	YEMEN	1	0	1
	<b>Total</b>	<b>330</b>	<b>19</b>	<b>349</b>
IND	United States	3,527	39	3,566
	AFGHANISTAN	1	0	1
	ARGENTINA	1	0	1
	AUSTRALIA	27	0	27
	BELGIUM	2	0	2
	BERMUDA	1	0	1
	BRAZIL	6	2	8
	CANADA	376	0	376
	CHILE	1	0	1
	CHINA	7	0	7
	COLOMBIA	3	0	3
	Congo, The	1	0	1
	COSTA RICA	3	0	3
	CYPRUS	1	0	1
	CZECH	2	0	2
	DENMARK	2	0	2
	DOMINICAN	3	0	3
	ECUADOR	5	0	5
	EGYPT	2	0	2
	FINLAND	1	0	1
	FRANCE	4	0	4
	GERMANY	6	0	6
GREECE	4	0	4	



		Existing Member(s)	New as of 7/1/2015 or later	Total
IND	HONG KONG	11	0	11
	HONG KONG	4	0	4
	HUNGARY	2	0	2
	ICELAND	1	0	1
	INDIA	1	0	1
	IRAQ	2	0	2
	IRELAND	2	0	2
	ISRAEL	6	0	6
	ITALY	7	0	7
	JAPAN	224	2	226
	Korea, Dem	1	0	1
	Korea, Republic	5	1	6
	KOREA,	5	0	5
	KUWAIT	4	0	4
	LEBANON	1	0	1
	MACAO	1	0	1
	MALAYSIA	2	0	2
	MEXICO	13	0	13
	MONGOLIA	1	0	1
	MOROCCO	1	0	1
	MYANMAR	1	0	1
	NETHERLAND	2	0	2
	NEW ZEALAND	8	0	8
	NIGERIA	3	0	3
	NORWAY	2	0	2
	OMAN	3	0	3
	PAKISTAN	3	0	3
	Puerto Rico	10	0	10
	QATAR	15	0	15
	RUSSIAN	1	0	1
SAUDI ARABIA	15	0	15	

		Existing Member(s)	New as of 7/1/2015 or later	Total
IND	SERBIA	1	0	1
	SINGAPORE	3	0	3
	SOUTH AFRICA	2	0	2
	SOUTH KOREA	12	0	12
	SPAIN	5	0	5
	SWEDEN	6	0	6
	SWITZERLAND	1	0	1
	TAIWAN	8	0	8
	TAIWAN ROC	4	0	4
	THAILAND	2	0	2
	TURKEY	3	0	3
	UGANDA	1	0	1
	UNITED ARAB	33	0	33
	UNITED	12	0	12
	United States	10	7	17
	UNITED	124	9	133
	VIET NAM	2	0	2
<b>Total</b>	<b>4,572</b>	<b>60</b>	<b>4,632</b>	
IND2	United States	1,653	5	1,658
	AUSTRALIA	17	0	17
	AUSTRIA	2	0	2
	BAHRAIN	3	0	3
	BENIN	1	0	1
	BOLIVIA	1	0	1
	BRAZIL	4	0	4
	CANADA	99	0	99
	CAYMAN	1	0	1
	CHINA	3	0	3
	COLOMBIA	2	0	2
	COSTA RICA	1	0	1
	CYPRUS	1	0	1

		Existing Member(s)	New as of 7/1/2015 or later	Total
IND2	FINLAND	1	0	1
	FRANCE	1	0	1
	GERMANY	7	0	7
	GREECE	1	0	1
	HONG KONG	5	0	5
	HONG KONG	7	0	7
	INDIA	3	0	3
	ITALY	4	0	4
	JAPAN	93	0	93
	KAZAKHSTAN	1	0	1
	Korea, Republic	3	0	3
	KOREA,	4	0	4
	KUWAIT	5	0	5
	Lao People's	0	1	1
	LEBANON	1	0	1
	MACAO	4	0	4
	MALAYSIA	3	0	3
	MARTINIQUE	1	0	1
	NETHERLAND	1	0	1
	NEW	1	0	1
	NEW ZEALAND	2	0	2
	NIGERIA	1	0	1
	NORWAY	1	0	1
	OMAN	1	0	1
	QATAR	15	0	15
	ROMANIA	1	0	1
	RUSSIAN	1	0	1
	SAUDI ARABIA	10	0	10
	SINGAPORE	2	0	2
	SLOVAKIA	2	0	2
SOUTH KOREA	6	0	6	

		Existing Member(s)	New as of 7/1/2015 or later	Total
IND2	SPAIN	2	0	2
	SWITZERLAND	2	0	2
	TAIWAN	6	0	6
	TAIWAN ROC	1	0	1
	THAILAND	2	0	2
	TRINIDAD AND	1	0	1
	TURKEY	2	0	2
	UKRAINE	1	0	1
	UNITED ARAB	11	0	11
	UNITED	8	0	8
	UNITED	48	3	51
	URUGUAY	2	0	2
	VENEZUELA	1	0	1
	<b>Total</b>	<b>2,063</b>	<b>9</b>	<b>2,072</b>
LIF	United States	41	0	41
	AUSTRALIA	1	0	1
	CANADA	2	0	2
	EGYPT	1	0	1
	ISRAEL	1	0	1
	JAPAN	1	0	1
	UNITED ARAB	1	0	1
	UNITED	2	0	2
	UNITED	1	0	1
	<b>Total</b>	<b>51</b>	<b>0</b>	<b>51</b>
NT	United States	452	12	464
	AUSTRALIA	4	0	4
	CANADA	28	0	28
	CHINA	1	1	2
	ECUADOR	1	0	1
	GREECE	1	0	1
	GUAM	1	0	1

		Existing Member(s)	New as of 7/1/2015 or later	Total
NT	HONG KONG	1	0	1
	ISRAEL	1	0	1
	ITALY	1	0	1
	JAPAN	13	0	13
	KOREA,	1	0	1
	MALAYSIA	1	0	1
	MARTINIQUE	1	0	1
	NEW ZEALAND	1	0	1
	PERU	2	0	2
	Puerto Rico	1	0	1
	QATAR	2	0	2
	RUSSIA	1	0	1
	SAUDI ARABIA	5	0	5
	SLOVAKIA	1	0	1
	SOUTH KOREA	2	0	2
	SPAIN	1	0	1
	SWEDEN	1	0	1
	THAILAND	1	0	1
	TURKEY	1	0	1
	UNITED	4	0	4
United States	1	0	1	
UNITED	32	7	39	
<b>Total</b>	<b>563</b>	<b>20</b>	<b>583</b>	
NT2	United States	349	2	351
	AUSTRALIA	5	0	5
	CANADA	7	0	7
	CHINA	1	0	1
	GERMANY	1	0	1
	HONG KONG	2	0	2
	HONG KONG	1	0	1
	ITALY	1	0	1

		Existing Member(s)	New as of 7/1/2015 or later	Total
NT2	JAPAN	9	0	9
	KOREA,	2	0	2
	KUWAIT	1	0	1
	MACAO	1	0	1
	SAUDI ARABIA	1	0	1
	SOUTH KOREA	1	0	1
	SWITZERLAND	1	0	1
	TAIWAN	2	0	2
	UNITED	10	2	12
	<b>Total</b>	<b>395</b>	<b>4</b>	<b>399</b>
	PTR	United States	356	7
AUSTRALIA		3	0	3
BRAZIL		4	0	4
CANADA		25	0	25
CAYMAN		1	0	1
CHILE		1	0	1
CHINA		4	0	4
CZECH		2	0	2
DOMINICAN		1	0	1
ECUADOR		7	0	7
GEORGIA		1	0	1
GERMANY		2	0	2
GREECE		1	0	1
INDONESIA		1	0	1
IRAQ		1	0	1
ISRAEL		1	0	1
JAPAN		8	0	8
MEXICO		2	0	2
NEPAL		1	0	1
NEW ZEALAND		1	0	1
NIGERIA	1	0	1	

		Existing Member(s)	New as of 7/1/2015 or later	Total
PTR	NORTHERN	1	0	1
	OMAN	1	0	1
	PAKISTAN	1	0	1
	PANAMA	1	0	1
	PERU	1	0	1
	PHILIPPINES	3	0	3
	Puerto Rico	4	0	4
	QATAR	1	0	1
	SLOVENIA	1	0	1
	SOUTH AFRICA	1	0	1
	SOUTH KOREA	1	0	1
	TAIWAN	1	0	1
	TAIWAN ROC	1	0	1
	TANZANIA,	0	1	1
	THAILAND	1	0	1
	TURKEY	3	0	3
	UNITED ARAB	2	0	2
	UNITED	2	0	2
	United States	2	0	2
	UNITED	12	0	12
VENEZUELA	3	0	3	
VIETNAM	1	0	1	
<b>Total</b>	<b>468</b>	<b>8</b>	<b>476</b>	
PTR2	United States	192	4	196
	ARMENIA	1	0	1
	BRAZIL	2	0	2
	CANADA	6	0	6
	CHILE	1	0	1
	CHINA	3	0	3
	COLOMBIA	1	0	1
	CZECH	1	0	1

		Existing Member(s)	New as of 7/1/2015 or later	Total
PTR2	HONG KONG	1	0	1
	INDONESIA	2	0	2
	ISRAEL	1	0	1
	ITALY	1	0	1
	JAPAN	6	0	6
	MACAO	1	0	1
	MEXICO	1	0	1
	POLAND	1	0	1
	QATAR	1	0	1
	SAUDI ARABIA	9	0	9
	TAIWAN	3	0	3
	TURKEY	5	0	5
	UNITED ARAB	1	0	1
	UNITED	7	1	8
	<b>Total</b>	<b>247</b>	<b>5</b>	<b>252</b>
RET	United States	130	0	130
	ARGENTINA	1	0	1
	BRAZIL	1	0	1
	CANADA	6	0	6
	COLOMBIA	1	0	1
	GERMANY	1	0	1
	JAPAN	2	0	2
	PORTUGAL	1	0	1
	SRI LANKA	1	0	1
	UNITED	2	0	2
	<b>Total</b>	<b>146</b>	<b>0</b>	<b>146</b>
RET2	United States	83	0	83
	AUSTRALIA	1	0	1
	CANADA	1	0	1
	ISRAEL	4	0	4
	ITALY	1	0	1



		Existing Member(s)	New as of 7/1/2015 or later	Total
RET2	JAPAN	4	1	5
	SPAIN	1	0	1
	UNITED	1	0	1
	<b>Total</b>	<b>96</b>	<b>1</b>	<b>97</b>
STU	United States	805	16	821
	AUSTRALIA	8	0	8
	BRAZIL	1	0	1
	CAMBODIA	1	0	1
	CANADA	81	0	81
	CHINA	7	0	7
	COLOMBIA	1	0	1
	FRANCE	1	0	1
	GERMANY	2	0	2
	GUAM	1	0	1
	HONG KONG	2	0	2
	ITALY	1	0	1
	JAPAN	15	0	15
	Korea, Republic	1	0	1
	NEW ZEALAND	2	0	2
	POLAND	1	0	1
	PORTUGAL	1	0	1
	SAUDI ARABIA	1	0	1
	SLOVENIA	1	0	1
	SOUTH KOREA	4	0	4
	SPAIN	1	0	1
	THAILAND	23	0	23
	TURKEY	3	0	3
	UNITED ARAB	1	0	1
	UNITED	8	0	8
	United States	1	0	1
	UNITED	30	8	38

		Existing Member(s)	New as of 7/1/2015 or later	Total
STU	UZBEKISTAN	1	0	1
	<b>Total</b>	<b>1,005</b>	<b>24</b>	<b>1,029</b>
STU2	United States	373	3	376
	AUSTRALIA	6	0	6
	BRAZIL	2	0	2
	CANADA	25	0	25
	CHINA	1	0	1
	FRANCE	1	0	1
	HONG KONG	1	0	1
	INDONESIA	1	0	1
	ISRAEL	2	0	2
	JAPAN	8	0	8
	KOREA,	2	0	2
	LEBANON	1	0	1
	LIBYAN ARAB	1	0	1
	MEXICO	3	0	3
	NEPAL	1	0	1
	NEW ZEALAND	1	0	1
	OMAN	1	0	1
	Puerto Rico	1	0	1
	SINGAPORE	1	0	1
	UNITED	5	0	5
UNITED	15	0	15	
<b>Total</b>	<b>452</b>	<b>3</b>	<b>455</b>	
<b>Total</b>	<b>11,286</b>	<b>186</b>	<b>11,472</b>	

This report is based on members paid through 7/31/2015 or later.

Country/State/Province	Total	
<b>AFGHANISTAN</b>	<b>2</b>	0.0%
<b>ALBANIA</b>	<b>9</b>	0.1%
<b>ALGERIA</b>	<b>2</b>	0.0%
<b>ANGOLA</b>	<b>2</b>	0.0%
<b>ARGENTINA</b>	<b>25</b>	0.2%
<b>ARMENIA</b>	<b>3</b>	0.0%
<b>AUSTRALIA</b>	<b>72</b>	0.6%
<b>AUSTRIA</b>	<b>2</b>	0.0%
<b>AZERBAIJAN</b>	<b>5</b>	0.0%
<b>BAHRAIN</b>	<b>3</b>	0.0%
<b>BANGLADESH</b>	<b>29</b>	0.3%
<b>BARBADOS</b>	<b>1</b>	0.0%
<b>BELARUS</b>	<b>1</b>	0.0%
<b>BELGIUM</b>	<b>2</b>	0.0%
<b>BELIZE</b>	<b>2</b>	0.0%
<b>BENIN</b>	<b>1</b>	0.0%
<b>BERMUDA</b>	<b>1</b>	0.0%
<b>BOLIVIA</b>	<b>11</b>	0.1%
<b>BOSNIA AND HERZEGOVINA</b>	<b>1</b>	0.0%
<b>BRAZIL</b>	<b>104</b>	0.9%
<b>BULGARIA</b>	<b>2</b>	0.0%
<b>BURKINA FASO</b>	<b>3</b>	0.0%
<b>CAMBODIA</b>	<b>3</b>	0.0%
<b>CAMEROON</b>	<b>3</b>	0.0%
<b>CANADA</b>		
<i>CANADA</i>	<i>11</i>	
<i>CANADA</i>	<i>Alberta</i>	<i>62</i>
<i>CANADA</i>	<i>British Columbia</i>	<i>141</i>
<i>CANADA</i>	<i>California</i>	<i>1</i>
<i>CANADA</i>	<i>Manitoba</i>	<i>18</i>
<i>CANADA</i>	<i>Montana</i>	<i>1</i>
<i>CANADA</i>	<i>New Brunswick</i>	<i>15</i>
<i>CANADA</i>	<i>Newfoundland and Labrador</i>	<i>1</i>
<i>CANADA</i>	<i>Nova Scotia</i>	<i>18</i>
<i>CANADA</i>	<i>Ohio</i>	<i>1</i>
<i>CANADA</i>	<i>Ontario</i>	<i>315</i>
<i>CANADA</i>	<i>Quebec</i>	<i>38</i>
<i>CANADA</i>	<i>Saskatchewan</i>	<i>34</i>
<i>CANADA</i>	<i>Yukon Territory</i>	<i>1</i>
<b>CANADA</b>	<b>657</b>	5.7%
<b>CAYMAN ISLANDS</b>	<b>2</b>	0.0%
<b>CHILE</b>	<b>12</b>	0.1%
<b>CHINA</b>	<b>223</b>	1.9%
<b>COLOMBIA</b>	<b>31</b>	0.3%
<b>Congo, The Dem Rep Of The</b>	<b>1</b>	0.0%
<b>COSTA RICA</b>	<b>19</b>	0.2%
<b>CROATIA</b>	<b>3</b>	0.0%
<b>CUBA</b>	<b>1</b>	0.0%
<b>CYPRUS</b>	<b>2</b>	0.0%
<b>CZECH REPUBLIC</b>	<b>5</b>	0.0%
<b>DENMARK</b>	<b>2</b>	0.0%
<b>DOMINICAN REPUBLIC</b>	<b>12</b>	0.1%
<b>ECUADOR</b>	<b>91</b>	0.8%
<b>EGYPT</b>	<b>24</b>	0.2%
<b>FINLAND</b>	<b>2</b>	0.0%
<b>FRANCE</b>	<b>7</b>	0.1%
<b>GABON</b>	<b>1</b>	0.0%

GEORGIA	7	0.1%
GERMANY	20	0.2%
GHANA	1	0.0%
GREECE	7	0.1%
GRENADA	3	0.0%
GUAM	2	0.0%
GUATEMALA	9	0.1%
HAITI	18	0.2%
HONDURAS	3	0.0%
HONG KONG	22	0.2%
HONG KONG SAR CHINA	16	0.1%
HUNGARY	2	0.0%
ICELAND	1	0.0%
INDIA	71	0.6%
INDONESIA	12	0.1%
IRAN	5	0.0%
IRAQ	6	0.1%
IRELAND	2	0.0%
ISRAEL	16	0.1%
ITALY	16	0.1%
JAMAICA	2	0.0%
JAPAN	386	3.4%
JORDAN	4	0.0%
KAZAKHSTAN	4	0.0%
KENYA	1	0.0%
Korea, Dem People's Rep	1	0.0%
Korea, Republic Of	10	0.1%
KOREA, REPUBLIC OF	14	0.1%
KOSOVO (UNMIK)	3	0.0%
KUWAIT	11	0.1%
KYRGYZSTAN	2	0.0%
Lao People's Dem Republic	1	0.0%
LATVIA	1	0.0%
LEBANON	9	0.1%
LIBYAN ARAB JAMAHIRIYA	1	0.0%
LITHUANIA	1	0.0%
MACAO	8	0.1%
MADAGASCAR	4	0.0%
MALAYSIA	26	0.2%
MALDIVES	1	0.0%
MALI	2	0.0%
MARSHALL ISLANDS	1	0.0%
MARTINIQUE	2	0.0%
MAURITANIA	10	0.1%
MAURITIUS	1	0.0%
MEXICO	101	0.9%
MOLDOVA, REPUBLIC OF	3	0.0%
MONGOLIA	28	0.2%
MOROCCO	26	0.2%
MOZAMBIOUE	1	0.0%
MYANMAR	2	0.0%
NEPAL	13	0.1%
NETHERLANDS	3	0.0%
NEW CALEDONIA	1	0.0%
NEW ZEALAND	16	0.1%
NICARAGUA	2	0.0%
NIGER	1	0.0%
NIGERIA	20	0.2%
NORTHERN MARIANA ISLANDS	1	0.0%
NORWAY	3	0.0%
OMAN	6	0.1%

<b>PAKISTAN</b>	<b>23</b>	<b>0.2%</b>
<b>PALESTINIAN TERRITORY</b>	<b>2</b>	<b>0.0%</b>
<b>PANAMA</b>	<b>16</b>	<b>0.1%</b>
<b>PARAGUAY</b>	<b>2</b>	<b>0.0%</b>
<b>PEOPLES REP OF CHINA</b>	<b>9</b>	<b>0.1%</b>
<b>PERU</b>	<b>63</b>	<b>0.5%</b>
<b>PHILIPPINES</b>	<b>19</b>	<b>0.2%</b>
<b>POLAND</b>	<b>12</b>	<b>0.1%</b>
<b>PORTUGAL</b>	<b>2</b>	<b>0.0%</b>
<b>Puerto Rico</b>	<b>16</b>	<b>0.1%</b>
<b>OATAR</b>	<b>34</b>	<b>0.3%</b>
<b>ROMANIA</b>	<b>1</b>	<b>0.0%</b>
<b>RUSSIA</b>	<b>9</b>	<b>0.1%</b>
<b>RUSSIAN FEDERATION</b>	<b>10</b>	<b>0.1%</b>
<b>RWANDA</b>	<b>2</b>	<b>0.0%</b>
<b>SAUDI ARABIA</b>	<b>42</b>	<b>0.4%</b>
<b>SENEGAL</b>	<b>1</b>	<b>0.0%</b>
<b>SERBIA</b>	<b>2</b>	<b>0.0%</b>
<b>SIERRA LEONE</b>	<b>1</b>	<b>0.0%</b>
<b>SINGAPORE</b>	<b>6</b>	<b>0.1%</b>
<b>SLOVAKIA</b>	<b>4</b>	<b>0.0%</b>
<b>SLOVENIA</b>	<b>2</b>	<b>0.0%</b>
<b>SOUTH AFRICA</b>	<b>6</b>	<b>0.1%</b>
<b>SOUTH KOREA</b>	<b>26</b>	<b>0.2%</b>
<b>SPAIN</b>	<b>10</b>	<b>0.1%</b>
<b>SRI LANKA</b>	<b>1</b>	<b>0.0%</b>
<b>SUDAN</b>	<b>2</b>	<b>0.0%</b>
<b>SURINAME</b>	<b>1</b>	<b>0.0%</b>
<b>SWAZILAND</b>	<b>1</b>	<b>0.0%</b>
<b>SWEDEN</b>	<b>7</b>	<b>0.1%</b>
<b>SWITZERLAND</b>	<b>4</b>	<b>0.0%</b>
<b>SYRIAN ARAB REPUBLIC</b>	<b>2</b>	<b>0.0%</b>
<b>TAIWAN</b>	<b>20</b>	<b>0.2%</b>
<b>TAIWAN ROC</b>	<b>13</b>	<b>0.1%</b>
<b>TAJKISTAN</b>	<b>2</b>	<b>0.0%</b>
<b>TANZANIA, UNITED REPUBLIC</b>	<b>2</b>	<b>0.0%</b>
<b>THAILAND</b>	<b>60</b>	<b>0.5%</b>
<b>TRINIDAD AND TOBAGO</b>	<b>1</b>	<b>0.0%</b>
<b>TUNISIA</b>	<b>12</b>	<b>0.1%</b>
<b>TURKEY</b>	<b>53</b>	<b>0.5%</b>
<b>UGANDA</b>	<b>1</b>	<b>0.0%</b>
<b>UKRAINE</b>	<b>6</b>	<b>0.1%</b>
<b>UNITED ARAB EMIRATES</b>	<b>49</b>	<b>0.4%</b>
<b>UNITED KINGDOM</b>	<b>44</b>	<b>0.4%</b>
<b>United States</b>	<b>25</b>	<b>0.2%</b>
<b>UNITED STATES OF AMERICA</b>	<b>316</b>	<b>2.8%</b>
<b>URUGUAY</b>	<b>10</b>	<b>0.1%</b>
<b>USA</b>		
<i>USA</i>	<i>50</i>	
<i>USA</i>	<i>Alabama</i>	<i>70</i>
<i>USA</i>	<i>Alaska</i>	<i>13</i>
<i>USA</i>	<i>Alberta</i>	<i>1</i>
<i>USA</i>	<i>American Embassy</i>	<i>7</i>
<i>USA</i>	<i>Arizona</i>	<i>183</i>
<i>USA</i>	<i>Arkansas</i>	<i>74</i>
<i>USA</i>	<i>Armed Forces</i>	<i>7</i>
<i>USA</i>	<i>Armed Frces Americas</i>	<i>2</i>
<i>USA</i>	<i>British Columbia</i>	<i>1</i>
<i>USA</i>	<i>California</i>	<i>763</i>
<i>USA</i>	<i>Colorado</i>	<i>151</i>
<i>USA</i>	<i>Connecticut</i>	<i>120</i>

USA	Delaware	55	
USA	District of Columbia	120	
USA	Florida	291	
USA	Georgia	154	
USA	Guam	2	
USA	Hawaii	69	
USA	Idaho	53	
USA	Illinois	343	
USA	Indiana	156	
USA	Iowa	98	
USA	Kansas	124	
USA	Kentucky	63	
USA	Louisiana	34	
USA	Maine	39	
USA	Maryland	256	
USA	Massachusetts	326	
USA	Michigan	269	
USA	Minnesota	128	
USA	Mississippi	43	
USA	Missouri	188	
USA	Montana	15	
USA	Nebraska	45	
USA	Nevada	39	
USA	New Hampshire	65	
USA	New Jersey	242	
USA	New Mexico	51	
USA	New York	703	
USA	North Carolina	142	
USA	North Dakota	15	
USA	Ohio	279	
USA	Oklahoma	56	
USA	Ontario	3	
USA	Oregon	265	
USA	Pennsylvania	324	
USA	Puerto Rico	17	
USA	Quebec	1	
USA	Rhode Island	46	
USA	South Carolina	42	
USA	South Dakota	7	
USA	Tennessee	92	
USA	Texas	389	
USA	Utah	80	
USA	Vermont	68	
USA	Virgin Islands	1	
USA	Virginia	380	
USA	Washington	311	
USA	West Virginia	30	
USA	Wisconsin	134	
USA	Wyoming	12	
USA	Yukon Territory	1	
<b>USA</b>		<b>8,108</b>	<b>70.7%</b>
<b>UZBEKISTAN</b>		<b>21</b>	<b>0.2%</b>
<b>VANUATU</b>		<b>1</b>	<b>0.0%</b>
<b>VENEZUELA</b>		<b>20</b>	<b>0.2%</b>
<b>VIET NAM</b>		<b>3</b>	<b>0.0%</b>
<b>VIETNAM</b>		<b>9</b>	<b>0.1%</b>
<b>YEMEN</b>		<b>2</b>	<b>0.0%</b>

**Grand Total:** \_\_\_\_\_

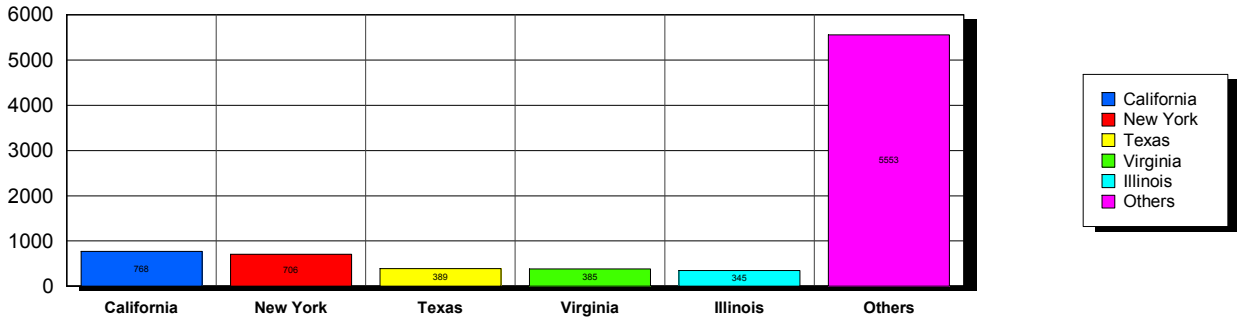
**11,472**

**157** distinct countries represented.

02-geographic.rpt 7/31/2015

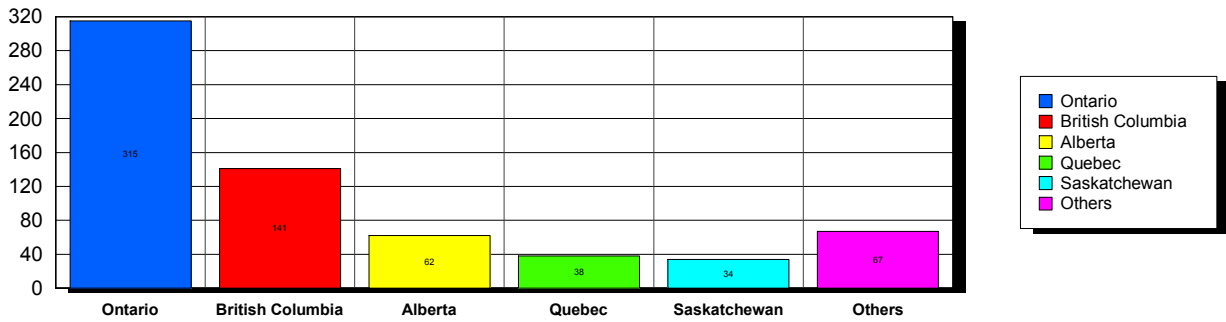
USA

Top 5 States per Country

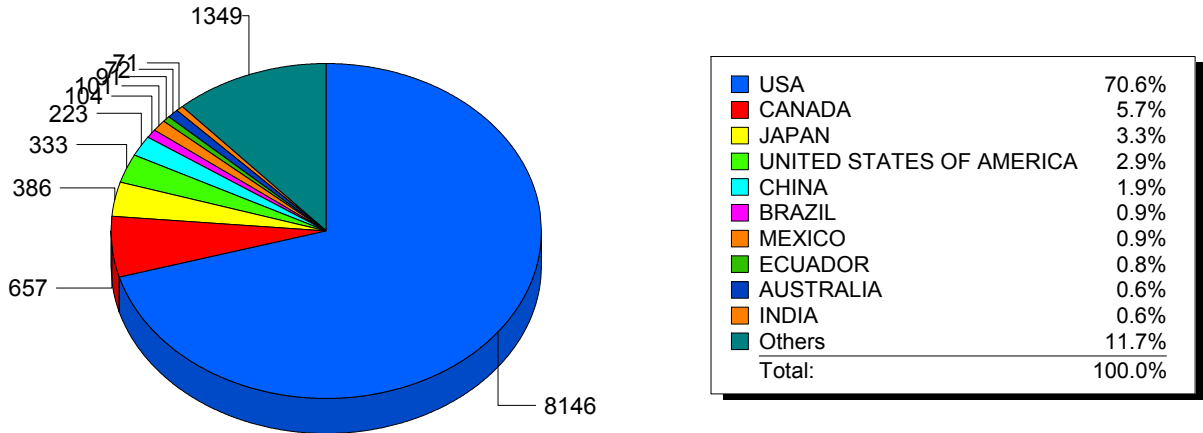


CANADA

Top 5 States per Country



Top 10 Countries





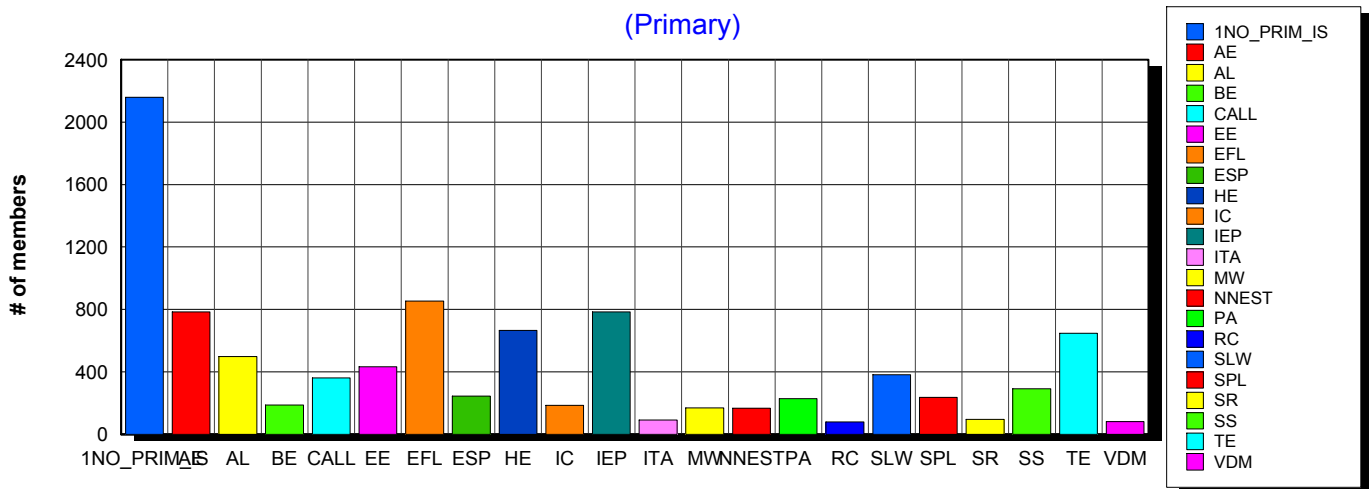
8/13/2015 **Basic statistics on Primary vs. other memberships in interest sections. For members paid through 7/31/2015 or later.**

		<i>Primary versus other</i>		
No Primary Interest Section	6.8%	<b>2,173</b>	2,160	13
Adult Education	6.1%	<b>1,976</b>	784	1,192
Applied Linguistics	5.9%	<b>1,891</b>	497	1,394
Bilingual Education	3.0%	<b>965</b>	187	778
Computer-Assisted Language Learning	5.2%	<b>1,688</b>	361	1,327
Elementary Education	3.2%	<b>1,024</b>	432	592
English as a Foreign Language	7.0%	<b>2,259</b>	854	1,405
English for Specific Purposes	4.5%	<b>1,434</b>	245	1,189
Higher Education	6.3%	<b>2,032</b>	666	1,366
Intercultural Communication	4.8%	<b>1,551</b>	186	1,365
Intensive English Programs	6.4%	<b>2,044</b>	783	1,261
International Teaching Assistants	2.0%	<b>630</b>	92	538
Materials Writers	3.4%	<b>1,107</b>	168	939
Nonnative English Speakers in TESOL	2.9%	<b>921</b>	167	754
Program Administration	3.5%	<b>1,112</b>	229	883
Refugee Concerns	2.0%	<b>651</b>	79	572
Second Language Writing	6.2%	<b>1,987</b>	381	1,606
Speech, Pronunciation, and Listening	5.3%	<b>1,699</b>	237	1,462
Social Responsibility	2.1%	<b>679</b>	96	583
Secondary Schools	2.7%	<b>875</b>	292	583
Teacher Education	7.3%	<b>2,342</b>	646	1,696
Video & Digital Media	3.5%	<b>1,126</b>	81	1,045
<i>9,641 distinct members</i>		<b>Total # of IS memberships</b>	<b>32,166</b>	9,623 22,543

The total count is the number of IS memberships total and may either be LESS or MORE than the actual number of individual members of TESOL. Due to open access to Interest Sections, these numbers may fluctuate considerably each month. For instance, one member may have selected four interest sections, while some members may belong to none.

### Interest Sections

(Primary)

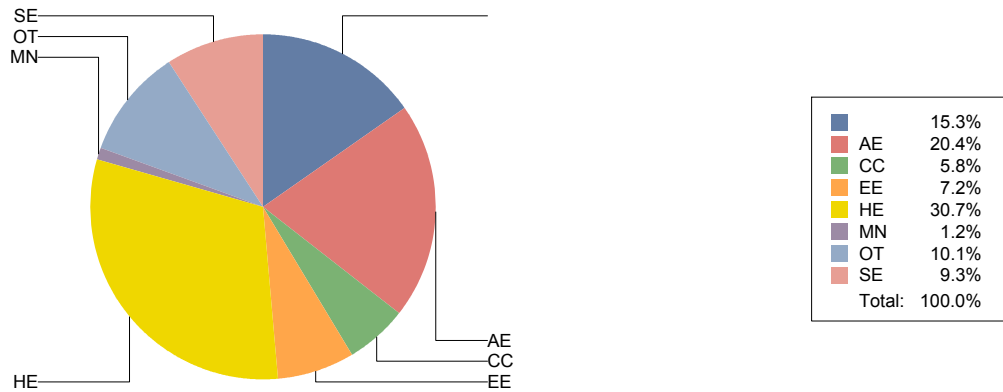


## Basic Statistics on Area of Work (Members paid through >= 7/31/2015)

		<b>1,733</b>	15.3%
Adult Education	<b>AE</b>	<b>2,309</b>	20.4%
Community/2yr College	<b>CC</b>	<b>659</b>	5.8%
Elementary Education	<b>EE</b>	<b>821</b>	7.2%
Postsecondary Education	<b>HE</b>	<b>3,477</b>	30.7%
Mainstream	<b>MN</b>	<b>141</b>	1.2%
Other	<b>OT</b>	<b>1,150</b>	10.1%
Secondary Education	<b>SE</b>	<b>1,051</b>	9.3%
		<b>11,341</b>	

Only members who selected an area of work are included on this report. Other members may not have responded to this question and are excluded from the count.

### Areas of Work



(Blanks indicate no response)

## Statistics on Areas of Interest (Members paid through >= 7/31/2015)

<u>CODE</u>	<u>DESCRIPTION</u>	<u>TOTAL*</u>	<u>% of TOTAL*</u>
TE	Teacher education	1,732	5%
CURRICULUM	Materials development/Curriculum	1,687	4%
EFL	English as a foreign language	1,604	4%
SLA	Second language acquisition	1,566	4%
AL	Applied linguistics	1,512	4%
HE	Higher education	1,453	4%
WRITING	Writing/composition	1,445	4%
CALL	Technology in education	1,428	4%
IEP	Intensive English programs	1,422	4%
IC	Multiculturalism/intercultural communications	1,407	4%
AE	Adult education	1,355	4%
PROFDEV	Professional development	1,297	3%
CONTENT	Content-based instruction	1,257	3%
SP	Speaking/pronunciation	1,156	3%
READING	Reading/literacy	1,152	3%
GRAMMAR	Grammar	1,104	3%
ASSESS	Assessment/testing	1,097	3%
ESP	English for specific purposes	1,025	3%
RS	Research	971	3%
PA	Program administration	774	2%
DISTANCE	Distance learning/Online Education	772	2%
VOCAB	Vocabulary/Lexicon	750	2%
BE	Bilingual education	730	2%
SOCIAL	Social/global/political concerns	648	2%
ISKILL	Integrated Skills	641	2%
WORKPLACE	Workplace English instruction/Business English	639	2%
LISTEN	Listening	618	2%
VI	Video and digital media	603	2%
EE	Elementary/primary education	584	2%
SS	Secondary education	562	1%
COMMCOLL	Community college/technical ed	486	1%
RC	Refugee concerns	425	1%
STANDARDS	Standards	422	1%
LINGUISTICS	Theoretical Linguistics	419	1%
ITA	International teaching assistants	401	1%
LIT	Literature	384	1%
FAMILY	Community/family outreach	315	1%
NNES	NNES/NES issues	300	1%
EMPLOYMENT	Employment issues/Certification	297	1%
ACCRED	Accreditation	262	1%
LDSN	Learning Disorders/Special Needs	261	1%
PUBLICPOLICY	Public policy	255	1%
MAINSTREAMING	Mainstreaming	232	1%
ARTS	Arts/Media/Science/Math/Social Science	175	0%
STYLISTICS	Stylistics	78	0%

Sorted in order of prevalence.

*\* Note: Members are encouraged to choose multiple areas of interest and some members do not choose any areas of interest. The total number of distinct members (4,787) represented in this report is less than the total number of active members as indicated elsewhere in this report.*

*Areas of interest are separate from official TESOL interest sections. Areas of interest represent distinct areas in which a member may be interested, rather than official entities in which a member is involved.*

*Areas of interest which have a very low count may be recent additions to the AOI list, or may reflect overall trends in membership.*

## Statistics on Areas of Expertise (Members paid through >= 7/31/2015)

<u>CODE</u>	<u>DESCRIPTION</u>	<u>TOTAL*</u>	<u>% of TOTAL*</u>
EFL	English as a foreign language	1,042	6%
CURRICULUM	Materials development/Curriculum	940	5%
AE	Adult education	868	5%
WRITING	Writing/composition	857	5%
IEP	Intensive English programs	844	5%
TE	Teacher education	794	5%
AL	Applied linguistics	789	5%
HE	Higher education	757	4%
SLA	Second language acquisition	675	4%
CONTENT	Content-based instruction	639	4%
GRAMMAR	Grammar	609	4%
IC	Multiculturalism/intercultural communications	561	3%
CALL	Technology in education	511	3%
ESP	English for specific purposes	502	3%
PROFDEV	Professional development	502	3%
SP	Speaking/pronunciation	478	3%
READING	Reading/literacy	463	3%
ASSESS	Assessment/testing	433	2%
PA	Program administration	433	2%
ISKILL	Integrated Skills	377	2%
EE	Elementary/primary education	373	2%
DISTANCE	Distance learning/Online Education	313	2%
RS	Research	288	2%
SS	Secondary education	287	2%
COMMCOLL	Community college/technical ed	283	2%
BE	Bilingual education	273	2%
WORKPLACE	Workplace English instruction/Business English	273	2%
LISTEN	Listening	261	2%
VOCAB	Vocabulary/Lexicon	227	1%
LIT	Literature	194	1%
SOCIAL	Social/global/political concerns	169	1%
VI	Video and digital media	150	1%
ITA	International teaching assistants	134	1%
ACCRED	Accreditation	132	1%
NNES	NNES/NES issues	131	1%
FAMILY	Community/family outreach	100	1%
MAINSTREAMING	Mainstreaming	96	1%
STANDARDS	Standards	95	1%
LINGUISTICS	Theoretical Linguistics	92	1%
RC	Refugee concerns	90	1%
ARTS	Arts/Media/Science/Math/Social Science	86	0%
LDSN	Learning Disorders/Special Needs	75	0%
EMPLOYMENT	Employment issues/Certification	72	0%
PUBLICPOLICY	Public policy	53	0%
STYLISTICS	Stylistics	20	0%

Sorted in order of prevalence.

*\* Note: Members are encouraged to choose multiple areas of expertise and some members do not choose any areas of expertise. The total number of distinct members (3,817) represented in this report is less than the total number of active members as indicated elsewhere in this report.*

*Areas of Expertise are separate from official TESOL interest sections or Areas of Interest. Areas of expertise represent distinct areas in which a member may be experienced in, rather than official entities in which a member is involved.*

*Areas of interest which have a very low count may be recent additions to the AOI list, or may reflect overall trends in membership.*