

7/20/2016

Membership Statistics: Grand totals for basic membership, by member type and country

		<u># Memberships</u>	<u># Members</u>
IND	BASIC		
	Existing Member(s)	4,512	4,512
	New as of 6/1/2016 or later	47	47
IND	BASIC	4,559	4,559

IND2	BASIC		
	Existing Member(s)	2,043	2,043
	New as of 6/1/2016 or later	13	13
IND2	BASIC	2,056	2,056

STU	BASIC		
	Existing Member(s)	862	862
	New as of 6/1/2016 or later	22	22
STU	BASIC	884	884

STU2	BASIC		
	Existing Member(s)	394	394
	New as of 6/1/2016 or later	3	3
STU2	BASIC	397	397

LIF	BASIC		
	Existing Member(s)	51	51
LIF	BASIC	51	51

RET	BASIC		
	Existing Member(s)	145	145
RET	BASIC	145	145

RET2	BASIC		
	Existing Member(s)	109	109
RET2	BASIC	109	109

PTR	BASIC		
	Existing Member(s)	454	454
	New as of 6/1/2016 or later	7	7
PTR	BASIC	461	461

PTR2	BASIC		
	Existing Member(s)	255	255
	New as of 6/1/2016 or later	1	1
PTR2	BASIC	256	256

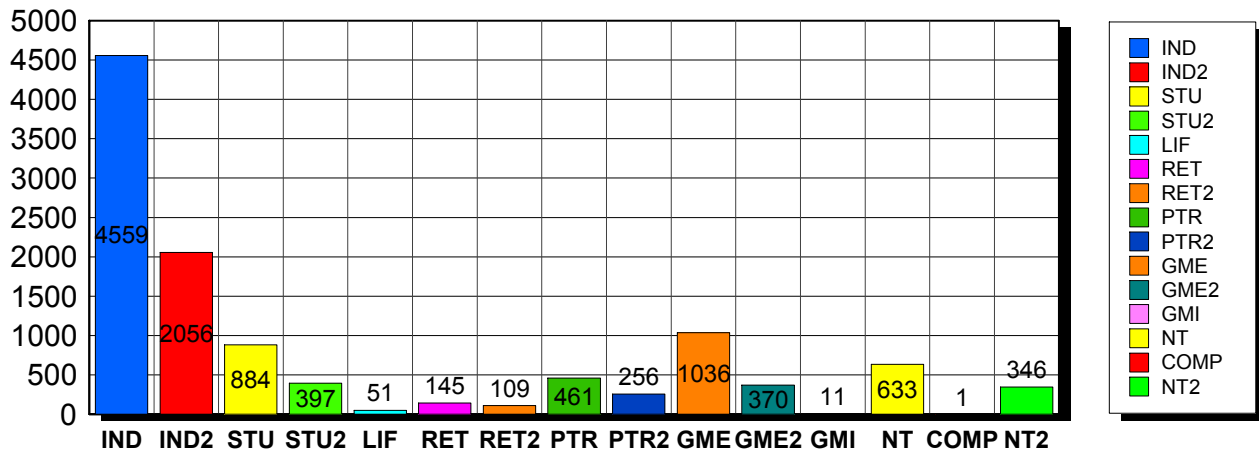
GME	BASIC		
	Existing Member(s)	1,012	1,012
	New as of 6/1/2016 or later	24	24
GME	BASIC	1,036	1,036

GME2	BASIC		
	Existing Member(s)	363	363
	New as of 6/1/2016 or later	7	7
GME2	BASIC	370	370

GMI	BASIC		

	Existing Member(s)	11	11
GMI	BASIC	11	11
<hr/>			
NT	BASIC		
	Existing Member(s)	620	620
	New as of 6/1/2016 or later	13	13
NT	BASIC	633	633
<hr/>			
COMP	BASIC		
	Existing Member(s)	1	1
COMP	BASIC	1	1
<hr/>			
NT2	BASIC		
	Existing Member(s)	345	345
	New as of 6/1/2016 or later	1	1
NT2	BASIC	346	346
<hr/>			
Grand Total:		11,315	11,315

Member Types



Note: in all general statistic reports, joint household memberships are treated as "one" member EXCEPT in the second column of this report, where joints are counted as two people, providing the most accurate count of the number of TESOL members.

		Existing Member(s)	New as of 6/1/2016 or later	Total
COMP	United States	1	0	1
	Total	1	0	1
GME	United States	38	1	39
	AFGHANISTAN	2	0	2
	ALBANIA	1	0	1
	ALGERIA	3	0	3
	ARGENTINA	22	1	23

		Existing Member(s)	New as of 6/1/2016 or later	Total
GME	ARMENIA	1	0	1
	AZERBAIJAN	6	0	6
	BAHRAIN	1	0	1
	BANGLADESH	14	0	14
	BELIZE	3	0	3
	BOLIVIA	17	0	17
	BOSNIA AND	1	0	1
	BRAZIL	62	1	63
	BULGARIA	3	0	3
	CAMBODIA	4	0	4
	CAMEROON	2	0	2
	CHILE	6	0	6
	CHINA	101	1	102
	COLOMBIA	15	0	15
	COMOROS	1	0	1
	COSTA RICA	15	0	15
	CROATIA	3	3	6
	CUBA	1	0	1
	DOMINICA	1	0	1
	DOMINICAN	17	0	17
	ECUADOR	89	4	93
	EGYPT	32	0	32
	EL SALVADOR	2	0	2
	GEORGIA	4	0	4
	GUATEMALA	14	0	14
	HAITI	10	0	10
	HONDURAS	5	0	5
	HONG KONG	1	0	1
	HONG KONG	1	0	1
	HUNGARY	3	0	3
INDIA	55	3	58	

		Existing Member(s)	New as of 6/1/2016 or later	Total
GME	INDONESIA	7	0	7
	IRAN	4	0	4
	IRAN, ISLAMIC	1	0	1
	IRAQ	3	0	3
	ISRAEL	1	0	1
	JAMAICA	1	0	1
	JAPAN	1	0	1
	JORDAN	4	0	4
	KAZAKHSTAN	1	0	1
	KOSOVO	1	0	1
	KYRGYZSTAN	1	0	1
	Lao People's	1	0	1
	LATVIA	1	0	1
	LEBANON	6	0	6
	MACEDONIA	1	0	1
	MADAGASCAR	2	0	2
	MALAYSIA	11	0	11
	MALI	1	0	1
	MAURITANIA	2	0	2
	MEXICO	44	0	44
	MOLDOVA,	1	0	1
	MONGOLIA	4	0	4
	MOROCCO	29	0	29
	MYANMAR	2	0	2
	NEPAL	15	1	16
	NEW ZEALAND	1	0	1
	NICARAGUA	3	0	3
	NIGERIA	3	0	3
	NORWAY	1	0	1
	PAKISTAN	21	0	21
PALESTINIAN	1	0	1	

		Existing Member(s)	New as of 6/1/2016 or later	Total
GME	PANAMA	18	0	18
	PARAGUAY	3	0	3
	PEOPLES REP	23	0	23
	PERU	94	0	94
	PHILIPPINES	20	4	24
	POLAND	4	0	4
	ROMANIA	1	0	1
	RUSSIA	2	1	3
	RUSSIAN	8	0	8
	RWANDA	3	0	3
	SENEGAL	1	0	1
	SERBIA	5	0	5
	SLOVAKIA	1	0	1
	SOUTH AFRICA	2	0	2
	SRI LANKA	4	0	4
	SUDAN	1	0	1
	SWAZILAND	1	0	1
	SYRIAN ARAB	1	0	1
	TAIWAN	2	0	2
	TAIWAN ROC	2	0	2
	TANZANIA,	1	0	1
	THAILAND	12	2	14
	TUNISIA	2	0	2
	TURKEY	24	1	25
	UKRAINE	7	0	7
	UNITED	1	0	1
	URUGUAY	6	0	6
	VENEZUELA	25	0	25
	VIET NAM	1	1	2
	VIETNAM	5	0	5
YEMEN	1	0	1	

		Existing Member(s)	New as of 6/1/2016 or later	Total
GME	Total	1,012	24	1,036
GME2	United States	8	0	8
	AFGHANISTAN	1	0	1
	ALBANIA	1	0	1
	ANGOLA	1	0	1
	ARGENTINA	5	1	6
	ARMENIA	1	0	1
	BANGLADESH	1	0	1
	BELARUS	1	0	1
	BENIN	1	0	1
	BOLIVIA	4	0	4
	BRAZIL	20	0	20
	BULGARIA	4	0	4
	BURKINA FASO	1	0	1
	CAMEROON	1	0	1
	CHILE	6	1	7
	CHINA	54	1	55
	COLOMBIA	12	0	12
	COSTA RICA	5	0	5
	DOMINICAN	9	0	9
	ECUADOR	17	0	17
	EGYPT	4	0	4
	GABON	2	0	2
	GEORGIA	1	0	1
	GRENADA	1	0	1
	GUATEMALA	1	0	1
	HONDURAS	1	0	1
	INDIA	22	0	22
INDONESIA	3	0	3	
IRAQ	2	0	2	
JORDAN	3	0	3	

		Existing Member(s)	New as of 6/1/2016 or later	Total
GME2	KAZAKHSTAN	4	0	4
	LATVIA	2	0	2
	LEBANON	3	0	3
	LITHUANIA	1	0	1
	MADAGASCAR	1	0	1
	MALAYSIA	6	0	6
	MAURITANIA	1	0	1
	MAURITIUS	1	0	1
	MEXICO	19	0	19
	MOLDOVA,	1	0	1
	MONGOLIA	7	0	7
	MOROCCO	2	1	3
	MOZAMBIQUE	1	0	1
	NAMIBIA	1	0	1
	NEPAL	4	1	5
	NIGER	1	0	1
	NIGERIA	4	0	4
	PAKISTAN	4	0	4
	PANAMA	2	0	2
	PARAGUAY	1	0	1
	PEOPLES REP	2	0	2
	PERU	7	0	7
	PHILIPPINES	6	0	6
	POLAND	6	0	6
	RUSSIA	3	0	3
	RUSSIAN	5	0	5
	SENEGAL	1	0	1
	SIERRA LEONE	1	0	1
	SRI LANKA	2	0	2
	TAIWAN ROC	3	0	3
TAJIKISTAN	2	0	2	

		Existing Member(s)	New as of 6/1/2016 or later	Total
GME2	THAILAND	16	1	17
	TUNISIA	1	0	1
	TURKEY	16	1	17
	UNITED	1	0	1
	United States	1	0	1
	URUGUAY	4	0	4
	UZBEKISTAN	19	0	19
	VENEZUELA	2	0	2
	VIET NAM	1	0	1
	VIETNAM	4	0	4
	YEMEN	1	0	1
	Total	363	7	370
GMI	BELARUS	1	0	1
	BRAZIL	2	0	2
	CHINA	2	0	2
	HUNGARY	1	0	1
	KOSOVO	1	0	1
	MEXICO	1	0	1
	PERU	3	0	3
	Total	11	0	11
IND	United States	3,964	45	4,009
	02453-2728	1	0	1
	ANGOLA	1	0	1
	ARGENTINA	1	0	1
	AUSTRALIA	15	0	15
	AUSTRIA	1	0	1
	BAHRAIN	1	0	1
	BERMUDA	1	0	1
	BRAZIL	6	1	7
	CANADA	114	0	114
	CHILE	3	0	3

		Existing Member(s)	New as of 6/1/2016 or later	Total
IND	CHINA	8	0	8
	COLOMBIA	1	0	1
	CZECH	5	0	5
	DENMARK	2	0	2
	ECUADOR	13	0	13
	EGYPT	4	0	4
	FINLAND	1	0	1
	FRANCE	4	0	4
	GERMANY	5	0	5
	GREECE	2	0	2
	HAITI	1	0	1
	HONG KONG	4	0	4
	HONG KONG	2	0	2
	HUNGARY	2	0	2
	INDIA	1	0	1
	IRAN	1	0	1
	IRAQ	1	0	1
	IRELAND	1	0	1
	ISRAEL	3	0	3
	ITALY	4	0	4
	JAPAN	169	1	170
	Korea, Republic	4	0	4
	KOREA,	1	0	1
	KOREA,	5	0	5
	KOSOVO	1	0	1
	KUWAIT	8	0	8
	LEBANON	1	0	1
	LIBYA	1	0	1
	MALAYSIA	1	0	1
	MEXICO	4	0	4
NETHERLAND	3	0	3	

		Existing Member(s)	New as of 6/1/2016 or later	Total
IND	NEW ZEALAND	4	0	4
	NIGERIA	1	0	1
	NORWAY	5	0	5
	OMAN	5	0	5
	PAKISTAN	2	0	2
	PALESTINIAN	1	0	1
	PARAGUAY	1	0	1
	PEOPLES REP	2	0	2
	PERU	5	0	5
	PORTUGAL	1	0	1
	QATAR	8	0	8
	SAUDI ARABIA	15	0	15
	SINGAPORE	4	0	4
	SLOVAKIA	1	0	1
	SOUTH AFRICA	1	0	1
	SOUTH KOREA	9	0	9
	SPAIN	4	0	4
	SWEDEN	6	0	6
	SWITZERLAND	1	0	1
	TAIWAN	7	0	7
	TAIWAN ROC	2	0	2
	THAILAND	4	0	4
	TRINIDAD AND	2	0	2
	UGANDA	1	0	1
	UNITED ARAB	23	0	23
	UNITED	11	0	11
	United States	5	0	5
UNITED	5	0	5	
URUGUAY	1	0	1	
VANUATU	1	0	1	
VIET NAM	2	0	2	

		Existing Member(s)	New as of 6/1/2016 or later	Total
IND	YEMEN	1	0	1
	Total	4,512	47	4,559
IND2	United States	1,693	10	1,703
	AUSTRALIA	15	1	16
	AUSTRIA	2	0	2
	BAHRAIN	1	0	1
	BENIN	1	0	1
	BRAZIL	1	0	1
	CANADA	100	1	101
	CAYMAN	1	0	1
	CHILE	1	0	1
	CHINA	7	0	7
	COLOMBIA	2	0	2
	COSTA RICA	1	0	1
	CYPRUS	2	0	2
	DENMARK	1	0	1
	FINLAND	1	0	1
	FRANCE	1	0	1
	GERMANY	5	0	5
	HONG KONG	3	0	3
	HONG KONG	8	0	8
	INDIA	3	0	3
	INDONESIA	1	0	1
	IRAQ	1	0	1
	ITALY	4	0	4
	JAPAN	91	0	91
	Korea, Republic	1	0	1
	KOREA,	3	0	3
	KUWAIT	3	0	3
Lao People's	1	0	1	
LUXEMBOURG	1	0	1	

		Existing Member(s)	New as of 6/1/2016 or later	Total
IND2	MACAO	4	0	4
	MALAYSIA	3	0	3
	MARTINIQUE	1	0	1
	NEW	1	0	1
	NEW ZEALAND	3	0	3
	NICARAGUA	1	0	1
	NIGERIA	1	0	1
	NORWAY	2	0	2
	OMAN	1	0	1
	QATAR	11	0	11
	ROMANIA	1	0	1
	SAUDI ARABIA	8	1	9
	SERBIA	1	0	1
	SINGAPORE	3	0	3
	SLOVAKIA	1	0	1
	SOUTH KOREA	8	0	8
	SWITZERLAND	2	0	2
	TAIWAN	6	0	6
	TAIWAN ROC	2	0	2
	THAILAND	1	0	1
	TRINIDAD AND	1	0	1
	TURKEY	2	0	2
	UKRAINE	2	0	2
	UNITED ARAB	8	0	8
UNITED	5	0	5	
United States	4	0	4	
UNITED	2	0	2	
URUGUAY	2	0	2	
VENEZUELA	1	0	1	
Total		2,043	13	2,056
LIF	United States	42	0	42

		Existing Member(s)	New as of 6/1/2016 or later	Total
LIF	AUSTRALIA	1	0	1
	CANADA	2	0	2
	EGYPT	1	0	1
	ISRAEL	1	0	1
	JAPAN	1	0	1
	UNITED ARAB	1	0	1
	UNITED	2	0	2
	Total	51	0	51
NT	United States	560	10	570
	AUSTRALIA	2	0	2
	AUSTRIA	1	0	1
	CANADA	11	0	11
	CHINA	2	0	2
	COLOMBIA	1	0	1
	ECUADOR	1	1	2
	FRANCE	0	1	1
	GERMANY	1	0	1
	HONG KONG	1	0	1
	HONG KONG	1	0	1
	IRAQ	1	0	1
	ITALY	1	1	2
	JAPAN	12	0	12
	KUWAIT	1	0	1
	MARTINIQUE	1	0	1
	MATARA	1	0	1
	MEXICO	2	0	2
	MONGOLIA	1	0	1
	NEW ZEALAND	1	0	1
	PALESTINIAN	2	0	2
PERU	1	0	1	
QATAR	1	0	1	

		Existing Member(s)	New as of 6/1/2016 or later	Total
NT	RUSSIA	1	0	1
	RUSSIAN	1	0	1
	SINGAPORE	1	0	1
	SOUTH KOREA	3	0	3
	SPAIN	1	0	1
	THAILAND	1	0	1
	TURKEY	1	0	1
	UNITED	5	0	5
	Total	620	13	633
NT2	United States	315	1	316
	AUSTRALIA	2	0	2
	CANADA	10	0	10
	HONG KONG	2	0	2
	HUNGARY	1	0	1
	ITALY	1	0	1
	JAPAN	2	0	2
	KOREA,	1	0	1
	KUWAIT	1	0	1
	MEXICO	1	0	1
	NEW ZEALAND	1	0	1
	SAUDI ARABIA	1	0	1
	SINGAPORE	2	0	2
	SOUTH KOREA	1	0	1
	TAIWAN	2	0	2
	UNITED ARAB	1	0	1
	UNITED	1	0	1
	Total	345	1	346
PTR	United States	355	7	362
	AUSTRALIA	1	0	1
	CANADA	11	0	11
	CHINA	5	0	5

		Existing Member(s)	New as of 6/1/2016 or later	Total
PTR	COLOMBIA	3	0	3
	COSTA RICA	3	0	3
	DOMINICAN	2	0	2
	ECUADOR	12	0	12
	EGYPT	1	0	1
	FRANCE	1	0	1
	GERMANY	1	0	1
	HAITI	1	0	1
	ICELAND	1	0	1
	INDONESIA	2	0	2
	IRAQ	1	0	1
	JAPAN	8	0	8
	KUWAIT	1	0	1
	Lao People's	1	0	1
	LITHUANIA	1	0	1
	MACAO	1	0	1
	MEXICO	1	0	1
	MOROCCO	1	0	1
	NEW ZEALAND	1	0	1
	NICARAGUA	2	0	2
	NIGERIA	1	0	1
	PAKISTAN	1	0	1
	PANAMA	1	0	1
	PHILIPPINES	3	0	3
	POLAND	1	0	1
	Puerto Rico	3	0	3
	SAUDI ARABIA	1	0	1
	SENEGAL	1	0	1
	SINGAPORE	1	0	1
	SOUTH AFRICA	1	0	1
SOUTH KOREA	1	0	1	

		Existing Member(s)	New as of 6/1/2016 or later	Total
PTR	SPAIN	3	0	3
	TANZANIA,	4	0	4
	THAILAND	2	0	2
	TURKEY	5	0	5
	UNITED ARAB	2	0	2
	UNITED	5	0	5
	VENEZUELA	1	0	1
	Total	454	7	461
PTR2	United States	207	1	208
	BRAZIL	2	0	2
	CANADA	11	0	11
	CHILE	1	0	1
	CHINA	3	0	3
	COLOMBIA	1	0	1
	GERMANY	1	0	1
	HONG KONG	1	0	1
	INDONESIA	1	0	1
	ISRAEL	1	0	1
	ITALY	1	0	1
	JAPAN	4	0	4
	MACAO	1	0	1
	MEXICO	1	0	1
	PHILIPPINES	1	0	1
	POLAND	1	0	1
	SAUDI ARABIA	4	0	4
	SRI LANKA	1	0	1
	TAIWAN	5	0	5
	THAILAND	1	0	1
	TURKEY	4	0	4
	UGANDA	1	0	1
UNITED ARAB	1	0	1	

		Existing Member(s)	New as of 6/1/2016 or later	Total
PTR2	Total	255	1	256
RET	United States	131	0	131
	BRAZIL	1	0	1
	CANADA	4	0	4
	COLOMBIA	1	0	1
	GERMANY	1	0	1
	ISRAEL	1	0	1
	JAPAN	3	0	3
	MEXICO	1	0	1
	PORTUGAL	1	0	1
	SRI LANKA	1	0	1
	Total	145	0	145
RET2	United States	93	0	93
	CANADA	1	0	1
	GERMANY	1	0	1
	ISRAEL	3	0	3
	JAPAN	4	0	4
	NEW ZEALAND	1	0	1
	OMAN	1	0	1
	SOUTH KOREA	1	0	1
	SPAIN	1	0	1
	THAILAND	1	0	1
	UNITED	2	0	2
	Total	109	0	109
STU	United States	749	21	770
	AUSTRALIA	7	0	7
	BELGIUM	1	0	1
	BRAZIL	3	0	3
	CANADA	25	1	26
	CHINA	5	0	5
	COLOMBIA	1	0	1

		Existing Member(s)	New as of 6/1/2016 or later	Total
STU	ECUADOR	1	0	1
	GERMANY	1	0	1
	GHANA	1	0	1
	GUATEMALA	1	0	1
	HONDURAS	1	0	1
	HONG KONG	2	0	2
	HONG KONG	3	0	3
	INDONESIA	1	0	1
	ITALY	1	0	1
	JAPAN	11	0	11
	KOREA,	1	0	1
	KUWAIT	1	0	1
	MALAYSIA	1	0	1
	MEXICO	7	0	7
	NEPAL	1	0	1
	NEW ZEALAND	2	0	2
	PAKISTAN	1	0	1
	PHILIPPINES	2	0	2
	Puerto Rico	1	0	1
	RUSSIAN	2	0	2
	SAUDI ARABIA	6	0	6
	SOUTH AFRICA	1	0	1
	SOUTH KOREA	2	0	2
	TAIWAN	3	0	3
	THAILAND	2	0	2
	TURKEY	9	0	9
	UNITED ARAB	2	0	2
UNITED	3	0	3	
UNITED	1	0	1	
Total	862	22	884	
STU2	United States	344	2	346

		Existing Member(s)	New as of 6/1/2016 or later	Total
STU2	ALBANIA	2	0	2
	AUSTRALIA	3	0	3
	BRAZIL	2	0	2
	CAMEROON	2	0	2
	CANADA	16	0	16
	CHINA	1	0	1
	FRANCE	1	0	1
	GERMANY	1	0	1
	HONG KONG	2	0	2
	HONG KONG	1	0	1
	INDONESIA	1	0	1
	JAPAN	2	1	3
	Korea, Republic	2	0	2
	KOREA,	1	0	1
	LATVIA	1	0	1
	MACAO	1	0	1
	NEW ZEALAND	1	0	1
	OMAN	1	0	1
	Puerto Rico	1	0	1
	SINGAPORE	1	0	1
	THAILAND	1	0	1
	UNITED	4	0	4
United States	1	0	1	
VIET NAM	1	0	1	
Total	394	3	397	
Total	11,177	138	11,315	

This report is based on members paid through 6/30/2016 or later.

Country/State/Province	Total	
02453-2728	1	0.0%
AFGHANISTAN	3	0.0%
ALBANIA	4	0.0%
ALGERIA	3	0.0%
ANGOLA	2	0.0%
ARGENTINA	30	0.3%
ARMENIA	2	0.0%
AUSTRALIA	47	0.4%
AUSTRIA	4	0.0%
AZERBAIJAN	6	0.1%
BAHRAIN	3	0.0%
BANGLADESH	15	0.1%
BELARUS	2	0.0%
BELGIUM	1	0.0%
BELIZE	3	0.0%
BENIN	2	0.0%
BERMUDA	1	0.0%
BOLIVIA	21	0.2%
BOSNIA AND HERZEGOVINA	1	0.0%
BRAZIL	101	0.9%
BULGARIA	7	0.1%
BURKINA FASO	1	0.0%
CAMBODIA	4	0.0%
CAMEROON	5	0.0%
CANADA		
CANADA	4	
CANADA	27	
CANADA	1	
CANADA	87	
CANADA	11	
CANADA	7	
CANADA	1	
CANADA	9	
CANADA	126	
CANADA	21	
CANADA	12	
CANADA	1	
CANADA	307	2.7%
CAYMAN ISLANDS	1	0.0%
CHILE	18	0.2%
CHINA	190	1.7%
COLOMBIA	37	0.3%
COMOROS	1	0.0%
COSTA RICA	24	0.2%
CROATIA	6	0.1%
CUBA	1	0.0%
CYPRUS	2	0.0%
CZECH REPUBLIC	5	0.0%
DENMARK	3	0.0%
DOMINICA	1	0.0%
DOMINICAN REPUBLIC	28	0.2%
ECUADOR	138	1.2%
EGYPT	42	0.4%
EL SALVADOR	2	0.0%
FINLAND	2	0.0%
FRANCE	8	0.1%
GABON	2	0.0%

GEORGIA	5	0.0%
GERMANY	17	0.2%
GHANA	1	0.0%
GREECE	2	0.0%
GRENADA	1	0.0%
GUATEMALA	16	0.1%
HAITI	12	0.1%
HONDURAS	7	0.1%
HONG KONG	14	0.1%
HONG KONG SAR CHINA	18	0.2%
HUNGARY	7	0.1%
ICELAND	1	0.0%
INDIA	84	0.7%
INDONESIA	16	0.1%
IRAN	5	0.0%
IRAN, ISLAMIC REPUBLIC OF	1	0.0%
IRAQ	9	0.1%
IRELAND	1	0.0%
ISRAEL	10	0.1%
ITALY	13	0.1%
JAMAICA	1	0.0%
JAPAN	310	2.7%
JORDAN	7	0.1%
KAZAKHSTAN	5	0.0%
Korea, Republic Of	7	0.1%
KOREA, REPUBLIC OF	1	0.0%
KOREA, REPUBLIC OF	11	0.1%
KOSOVO (UNMIK)	3	0.0%
KUWAIT	15	0.1%
KYRGYZSTAN	1	0.0%
Lao People's Dem Republic	3	0.0%
LATVIA	4	0.0%
LEBANON	10	0.1%
LIBYA	1	0.0%
LITHUANIA	2	0.0%
LUXEMBOURG	1	0.0%
MACAO	7	0.1%
MACEDONIA	1	0.0%
MADAGASCAR	3	0.0%
MALAYSIA	22	0.2%
MALI	1	0.0%
MARTINIQUE	2	0.0%
MATARA	1	0.0%
MAURITANIA	3	0.0%
MAURITIUS	1	0.0%
MEXICO	81	0.7%
MOLDOVA, REPUBLIC OF	2	0.0%
MONGOLIA	12	0.1%
MOROCCO	33	0.3%
MOZAMBIQUE	1	0.0%
MYANMAR	2	0.0%
NAMIBIA	1	0.0%
NEPAL	22	0.2%
NETHERLANDS	3	0.0%
NEW CALEDONIA	1	0.0%
NEW ZEALAND	15	0.1%
NICARAGUA	6	0.1%
NIGER	1	0.0%
NIGERIA	10	0.1%
NORWAY	8	0.1%
OMAN	8	0.1%
PAKISTAN	29	0.3%

PALESTINIAN TERRITORY	4	0.0%
PANAMA	21	0.2%
PARAGUAY	5	0.0%
PEOPLES REP OF CHINA	27	0.2%
PERU	110	1.0%
PHILIPPINES	36	0.3%
POLAND	12	0.1%
PORTUGAL	2	0.0%
Puerto Rico	5	0.0%
OATAR	20	0.2%
ROMANIA	2	0.0%
RUSSIA	7	0.1%
RUSSIAN FEDERATION	16	0.1%
RWANDA	3	0.0%
SAUDI ARABIA	36	0.3%
SENEGAL	3	0.0%
SERBIA	6	0.1%
SIERRA LEONE	1	0.0%
SINGAPORE	12	0.1%
SLOVAKIA	3	0.0%
SOUTH AFRICA	5	0.0%
SOUTH KOREA	25	0.2%
SPAIN	9	0.1%
SRI LANKA	8	0.1%
SUDAN	1	0.0%
SWAZILAND	1	0.0%
SWEDEN	6	0.1%
SWITZERLAND	3	0.0%
SYRIAN ARAB REPUBLIC	1	0.0%
TAIWAN	25	0.2%
TAIWAN ROC	9	0.1%
TAJKISTAN	2	0.0%
TANZANIA, UNITED REPUBLIC	5	0.0%
THAILAND	44	0.4%
TRINIDAD AND TOBAGO	3	0.0%
TUNISIA	3	0.0%
TURKEY	63	0.6%
UGANDA	2	0.0%
UKRAINE	9	0.1%
UNITED ARAB EMIRATES	38	0.3%
UNITED KINGDOM	35	0.3%
United States	11	0.1%
UNITED STATES OF AMERICA	13	0.1%
URUGUAY	13	0.1%
USA		
<i>USA</i>	<i>64</i>	
<i>USA</i>	<i>Alabama</i>	<i>99</i>
<i>USA</i>	<i>Alaska</i>	<i>14</i>
<i>USA</i>	<i>American Embassy</i>	<i>12</i>
<i>USA</i>	<i>Arizona</i>	<i>166</i>
<i>USA</i>	<i>Arkansas</i>	<i>54</i>
<i>USA</i>	<i>Armed Forces</i>	<i>8</i>
<i>USA</i>	<i>Armed Frces Americas</i>	<i>3</i>
<i>USA</i>	<i>British Columbia</i>	<i>2</i>
<i>USA</i>	<i>California</i>	<i>732</i>
<i>USA</i>	<i>Colorado</i>	<i>139</i>
<i>USA</i>	<i>Connecticut</i>	<i>132</i>
<i>USA</i>	<i>Delaware</i>	<i>83</i>
<i>USA</i>	<i>District of Columbia</i>	<i>196</i>
<i>USA</i>	<i>Florida</i>	<i>327</i>
<i>USA</i>	<i>Georgia</i>	<i>175</i>

USA	Guam	1	
USA	Hawaii	49	
USA	Idaho	48	
USA	Illinois	305	
USA	Indiana	150	
USA	Iowa	93	
USA	Kansas	145	
USA	Kentucky	84	
USA	Louisiana	47	
USA	Maine	52	
USA	Manitoba	1	
USA	Maryland	515	
USA	Massachusetts	318	
USA	Michigan	251	
USA	Minnesota	126	
USA	Mississippi	65	
USA	Missouri	190	
USA	Montana	12	
USA	Nebraska	56	
USA	Nevada	39	
USA	New Hampshire	54	
USA	New Jersey	253	
USA	New Mexico	44	
USA	New York	644	
USA	North Carolina	174	
USA	North Dakota	21	
USA	Ohio	271	
USA	Oklahoma	52	
USA	Ontario	1	
USA	Oregon	205	
USA	Pennsylvania	397	
USA	Prince Edward Island	1	
USA	Puerto Rico	21	
USA	Rhode Island	54	
USA	Saskatchewan	1	
USA	South Carolina	54	
USA	South Dakota	16	
USA	Tennessee	112	
USA	Texas	389	
USA	Utah	83	
USA	Vermont	65	
USA	Virginia	499	
USA	Washington	260	
USA	West Virginia	33	
USA	Wisconsin	131	
USA	Wyoming	10	
USA		8,598	76.0%
UZBEKISTAN		19	0.2%
VANUATU		1	0.0%
VENEZUELA		29	0.3%
VIET NAM		6	0.1%
VIETNAM		9	0.1%
YEMEN		3	0.0%
Grand Total:		11,315	

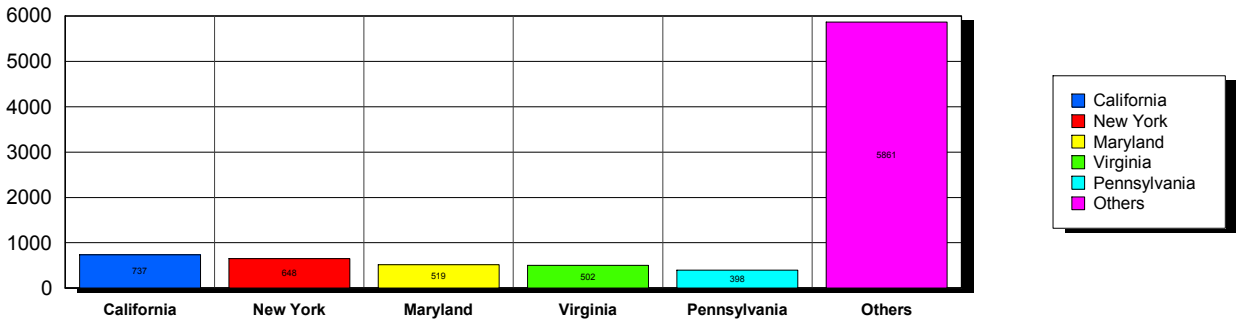
157 distinct countries represented.

7/20/2016

Membership counts by country for members paid through 06/30/2016 or later.

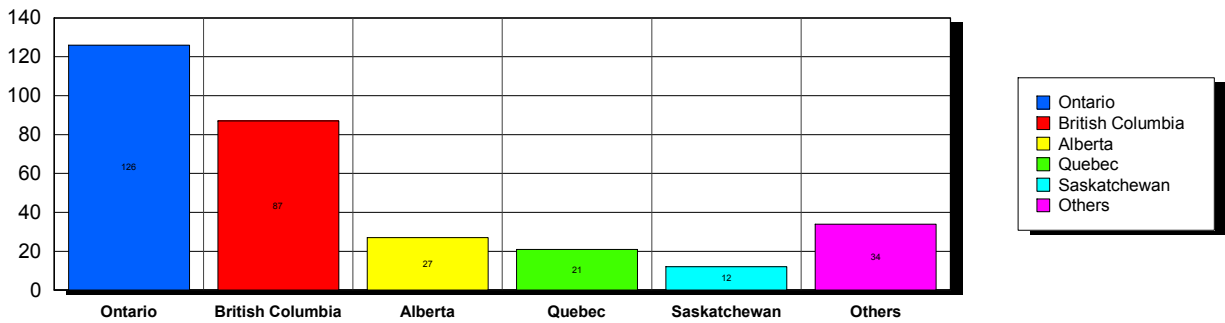
USA

Top 5 States per Country

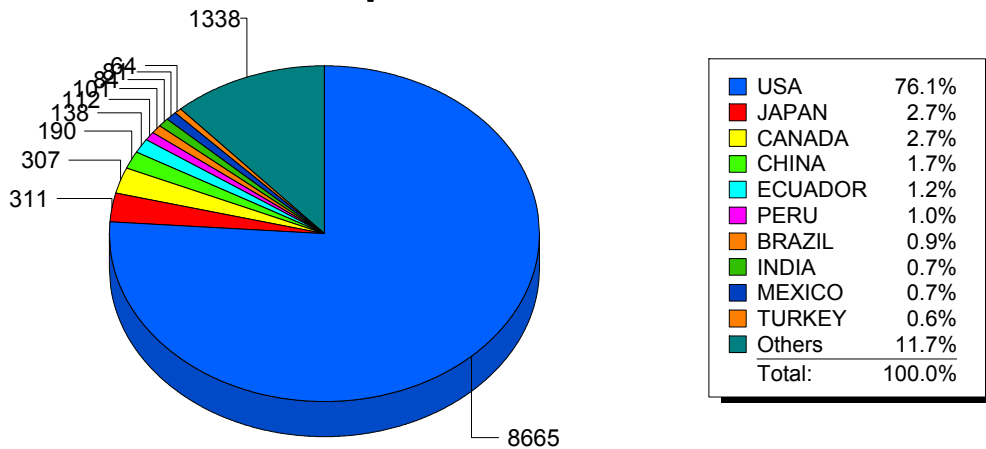


CANADA

Top 5 States per Country



Top 10 Countries



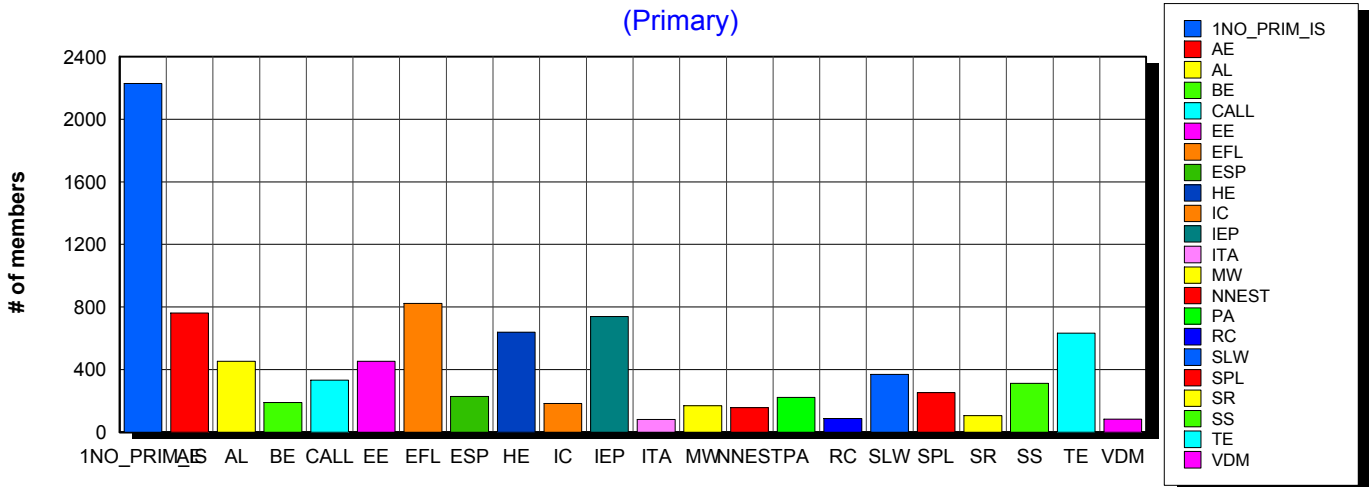
7/20/2016 **Basic statistics on Primary vs. other memberships in interest sections. For members paid through 6/30/2016 or later.**

			<i>Primary versus other</i>	
No Primary Interest Section	7.0%	2,239	2,229	10
Adult Education	6.3%	2,010	762	1,248
Applied Linguistics	5.8%	1,859	453	1,406
Bilingual Education	3.1%	1,003	189	814
Computer-Assisted Language Learning	5.1%	1,624	333	1,291
Elementary Education	3.3%	1,050	452	598
English as a Foreign Language	6.9%	2,204	823	1,381
English for Specific Purposes	4.4%	1,404	229	1,175
Higher Education	6.2%	1,985	639	1,346
Intercultural Communication	4.8%	1,555	184	1,371
Intensive English Programs	6.1%	1,974	738	1,236
International Teaching Assistants	1.9%	615	81	534
Materials Writers	3.4%	1,094	169	925
Nonnative English Speakers in TESOL	2.8%	906	156	750
Program Administration	3.5%	1,132	222	910
Refugee Concerns	2.3%	736	87	649
Second Language Writing	6.1%	1,970	369	1,601
Speech, Pronunciation, and Listening	5.3%	1,704	252	1,452
Social Responsibility	2.2%	714	105	609
Secondary Schools	2.8%	915	312	603
Teacher Education	7.2%	2,322	632	1,690
Video & Digital Media	3.5%	1,121	82	1,039
<i>9,520 distinct members</i>		Total # of IS memberships	32,136	9,498 22,638

The total count is the number of IS memberships total and may either be LESS or MORE than the actual number of individual members of TESOL. Due to open access to Interest Sections, these numbers may fluctuate considerably each month. For instance, one member may have selected four interest sections, while some members may belong to none.

Interest Sections

(Primary)

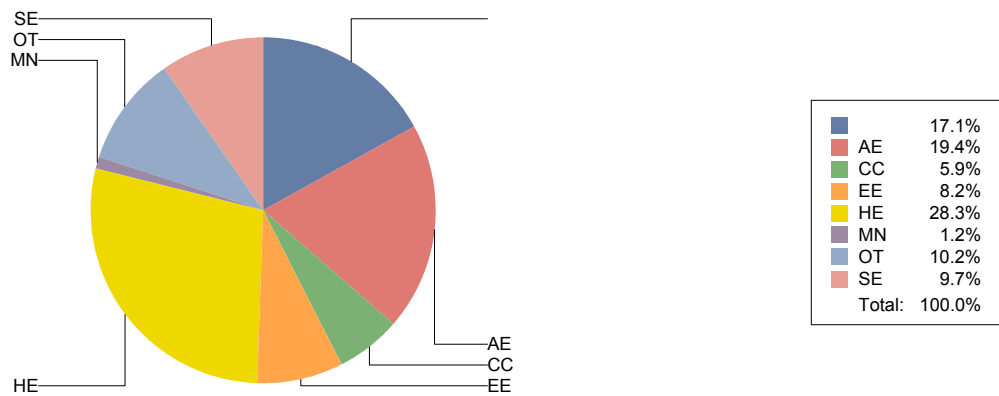


Basic Statistics on Area of Work (Members paid through >= 6/30/2016)

		1,923	17.1%
Adult Education	AE	2,185	19.4%
Community/2yr College	CC	666	5.9%
Elementary Education	EE	926	8.2%
Postsecondary Education	HE	3,182	28.3%
Mainstream	MN	140	1.2%
Other	OT	1,149	10.2%
Secondary Education	SE	1,091	9.7%
		11,262	

Only members who selected an area of work are included on this report. Other members may not have responded to this question and are excluded from the count.

Areas of Work



(Blanks indicate no response)

Statistics on Areas of Interest (Members paid through >= 6/30/2016)

<u>CODE</u>	<u>DESCRIPTION</u>	<u>TOTAL*</u>	<u>% of TOTAL*</u>
TE	Teacher education	1,530	5%
CURRICULUM	Materials development/Curriculum	1,480	4%
EFL	English as a foreign language	1,412	4%
SLA	Second language acquisition	1,399	4%
AL	Applied linguistics	1,345	4%
HE	Higher education	1,313	4%
WRITING	Writing/composition	1,279	4%
IC	Multiculturalism/intercultural communications	1,276	4%
CALL	Technology in education	1,249	4%
IEP	Intensive English programs	1,224	4%
AE	Adult education	1,197	4%
PROFDEV	Professional development	1,147	3%
CONTENT	Content-based instruction	1,116	3%
SP	Speaking/pronunciation	1,050	3%
READING	Reading/literacy	1,022	3%
GRAMMAR	Grammar	985	3%
ASSESS	Assessment/testing	954	3%
ESP	English for specific purposes	911	3%
RS	Research	867	3%
PA	Program administration	705	2%
DISTANCE	Distance learning/Online Education	695	2%
VOCAB	Vocabulary/Lexicon	686	2%
BE	Bilingual education	647	2%
SOCIAL	Social/global/political concerns	589	2%
ISKILL	Integrated Skills	564	2%
LISTEN	Listening	563	2%
WORKPLACE	Workplace English instruction/Business English	544	2%
VI	Video and digital media	529	2%
EE	Elementary/primary education	511	2%
SS	Secondary education	499	1%
COMMCOLL	Community college/technical ed	453	1%
LINGUISTICS	Theoretical Linguistics	383	1%
RC	Refugee concerns	378	1%
STANDARDS	Standards	362	1%
LIT	Literature	345	1%
ITA	International teaching assistants	343	1%
FAMILY	Community/family outreach	289	1%
EMPLOYMENT	Employment issues/Certification	276	1%
NNES	NNES/NES issues	273	1%
PUBLICPOLICY	Public policy	234	1%
LDSN	Learning Disorders/Special Needs	231	1%
ACCRED	Accreditation	221	1%
MAINSTREAMING	Mainstreaming	198	1%
ARTS	Arts/Media/Science/Math/Social Science	155	0%
STYLISTICS	Stylistics	62	0%

Sorted in order of prevalence.

** Note: Members are encouraged to choose multiple areas of interest and some members do not choose any areas of interest. The total number of distinct members (4,216) represented in this report is less than the total number of active members as indicated elsewhere in this report.*

Areas of interest are separate from official TESOL interest sections. Areas of interest represent distinct areas in which a member may be interested, rather than official entities in which a member is involved.

Areas of interest which have a very low count may be recent additions to the AOI list, or may reflect overall trends in membership.

Statistics on Areas of Expertise (Members paid through >= 6/30/2016)

<u>CODE</u>	<u>DESCRIPTION</u>	<u>TOTAL*</u>	<u>% of TOTAL*</u>
EFL	English as a foreign language	919	6%
CURRICULUM	Materials development/Curriculum	818	5%
AE	Adult education	790	5%
WRITING	Writing/composition	762	5%
IEP	Intensive English programs	753	5%
TE	Teacher education	730	5%
AL	Applied linguistics	698	4%
HE	Higher education	688	4%
SLA	Second language acquisition	602	4%
CONTENT	Content-based instruction	579	4%
GRAMMAR	Grammar	561	4%
IC	Multiculturalism/intercultural communications	486	3%
CALL	Technology in education	481	3%
PROFDEV	Professional development	461	3%
ESP	English for specific purposes	449	3%
SP	Speaking/pronunciation	439	3%
READING	Reading/literacy	432	3%
PA	Program administration	401	3%
ASSESS	Assessment/testing	385	2%
EE	Elementary/primary education	344	2%
ISKILL	Integrated Skills	312	2%
DISTANCE	Distance learning/Online Education	293	2%
COMMCOLL	Community college/technical ed	276	2%
SS	Secondary education	265	2%
RS	Research	262	2%
BE	Bilingual education	246	2%
WORKPLACE	Workplace English instruction/Business English	239	2%
LISTEN	Listening	228	1%
VOCAB	Vocabulary/Lexicon	203	1%
LIT	Literature	177	1%
VI	Video and digital media	145	1%
SOCIAL	Social/global/political concerns	141	1%
NNES	NNES/NES issues	125	1%
ITA	International teaching assistants	124	1%
ACCRED	Accreditation	122	1%
LINGUISTICS	Theoretical Linguistics	89	1%
STANDARDS	Standards	86	1%
MAINSTREAMING	Mainstreaming	85	1%
RC	Refugee concerns	84	1%
FAMILY	Community/family outreach	83	1%
ARTS	Arts/Media/Science/Math/Social Science	79	1%
LDSN	Learning Disorders/Special Needs	73	0%
EMPLOYMENT	Employment issues/Certification	70	0%
PUBLICPOLICY	Public policy	48	0%
STYLISTICS	Stylistics	15	0%

Sorted in order of prevalence.

** Note: Members are encouraged to choose multiple areas of expertise and some members do not choose any areas of expertise. The total number of distinct members (3,418) represented in this report is less than the total number of active members as indicated elsewhere in this report.*

Areas of Expertise are separate from official TESOL interest sections or Areas of Interest. Areas of expertise represent distinct areas in which a member may be experienced in, rather than official entities in which a member is involved.

Areas of interest which have a very low count may be recent additions to the AOI list, or may reflect overall trends in membership.