

6/6/2016

Membership Statistics: Grand totals for basic membership, by member type and country

		<u># Memberships</u>	<u># Members</u>
IND	BASIC		
	Existing Member(s)	4,561	4,561
	New as of 5/1/2016 or later	69	69
IND	BASIC	4,630	4,630

IND2	BASIC		
	Existing Member(s)	2,060	2,060
	New as of 5/1/2016 or later	19	19
IND2	BASIC	2,079	2,079

STU	BASIC		
	Existing Member(s)	793	793
	New as of 5/1/2016 or later	10	10
STU	BASIC	803	803

STU2	BASIC		
	Existing Member(s)	381	381
	New as of 5/1/2016 or later	3	3
STU2	BASIC	384	384

LIF	BASIC		
	Existing Member(s)	51	51
LIF	BASIC	51	51

RET	BASIC		
	Existing Member(s)	149	149
RET	BASIC	149	149

RET2	BASIC		
	Existing Member(s)	104	104
RET2	BASIC	104	104

PTR	BASIC		
	Existing Member(s)	456	456
	New as of 5/1/2016 or later	9	9
PTR	BASIC	465	465

PTR2	BASIC		
	Existing Member(s)	246	246
	New as of 5/1/2016 or later	5	5
PTR2	BASIC	251	251

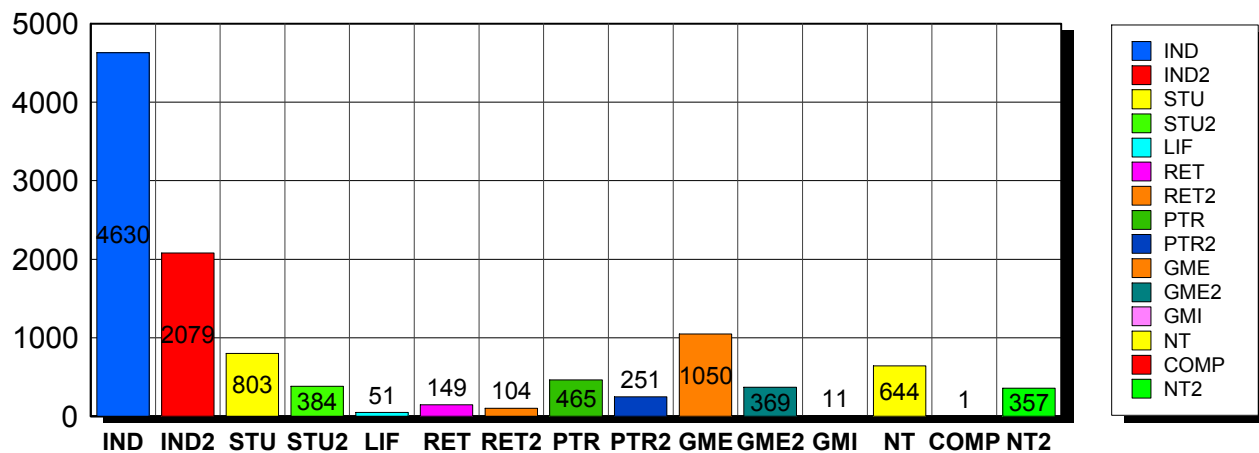
GME	BASIC		
	Existing Member(s)	1,004	1,004
	New as of 5/1/2016 or later	46	46
GME	BASIC	1,050	1,050

GME2	BASIC		
	Existing Member(s)	358	358
	New as of 5/1/2016 or later	11	11
GME2	BASIC	369	369

GMI	BASIC		

	Existing Member(s)	11	11
GMI	BASIC	11	11
<hr/>			
NT	BASIC		
	Existing Member(s)	628	628
	New as of 5/1/2016 or later	16	16
NT	BASIC	644	644
<hr/>			
COMP	BASIC		
	Existing Member(s)	1	1
COMP	BASIC	1	1
<hr/>			
NT2	BASIC		
	Existing Member(s)	351	351
	New as of 5/1/2016 or later	6	6
NT2	BASIC	357	357
<hr/>			
Grand Total:		11,348	11,348

Member Types



Note: in all general statistic reports, joint household memberships are treated as "one" member EXCEPT in the second column of this report, where joints are counted as two people, providing the most accurate count of the number of TESOL members.

		Existing Member(s)	New as of 5/1/2016 or later	Total
COMP	United States	1	0	1
	Total	1	0	1
GME	United States	39	1	40
	AFGHANISTAN	0	1	1
	ALBANIA	1	0	1
	ALGERIA	3	0	3
	ARGENTINA	20	1	21

		Existing Member(s)	New as of 5/1/2016 or later	Total
GME	ARMENIA	1	0	1
	AZERBAIJAN	6	0	6
	BAHRAIN	1	0	1
	BANGLADESH	13	0	13
	BELIZE	3	0	3
	BOLIVIA	19	0	19
	BOSNIA AND	1	0	1
	BRAZIL	54	9	63
	BULGARIA	3	0	3
	CAMBODIA	4	0	4
	CAMEROON	2	0	2
	CHILE	8	0	8
	CHINA	103	2	105
	COLOMBIA	14	0	14
	COMOROS	0	1	1
	COSTA RICA	14	0	14
	CROATIA	5	0	5
	CUBA	0	1	1
	DOMINICA	1	0	1
	DOMINICAN	16	0	16
	ECUADOR	90	6	96
	EGYPT	33	0	33
	EL SALVADOR	2	0	2
	GEORGIA	5	0	5
	GUATEMALA	13	1	14
	HAITI	11	0	11
	HONDURAS	5	0	5
	HONG KONG	1	0	1
	HONG KONG	1	0	1
	HUNGARY	3	0	3
INDIA	58	2	60	

		Existing Member(s)	New as of 5/1/2016 or later	Total
GME	INDONESIA	3	4	7
	IRAN	3	0	3
	IRAN, ISLAMIC	1	0	1
	IRAQ	3	0	3
	ISRAEL	1	0	1
	JAMAICA	2	0	2
	JAPAN	1	0	1
	JORDAN	1	0	1
	KAZAKHSTAN	1	0	1
	KYRGYZSTAN	1	0	1
	Lao People's	1	0	1
	LATVIA	1	0	1
	LEBANON	6	0	6
	MACEDONIA	1	0	1
	MADAGASCAR	2	0	2
	MALAYSIA	12	0	12
	MALI	1	0	1
	MAURITANIA	2	0	2
	MEXICO	46	0	46
	MOLDOVA,	1	0	1
	MONGOLIA	4	0	4
	MOROCCO	29	0	29
	MYANMAR	1	1	2
	NEPAL	12	4	16
	NEW ZEALAND	1	0	1
	NICARAGUA	3	0	3
	NIGERIA	7	0	7
NORWAY	1	0	1	
PAKISTAN	20	1	21	
PALESTINIAN	3	0	3	
PANAMA	20	0	20	

		Existing Member(s)	New as of 5/1/2016 or later	Total
GME	PARAGUAY	3	0	3
	PEOPLES REP	23	0	23
	PERU	93	2	95
	PHILIPPINES	17	1	18
	POLAND	4	0	4
	ROMANIA	2	0	2
	RUSSIA	4	1	5
	RUSSIAN	8	0	8
	RWANDA	3	0	3
	SENEGAL	0	1	1
	SERBIA	6	0	6
	SLOVAKIA	1	0	1
	SOUTH AFRICA	1	0	1
	SRI LANKA	4	0	4
	SUDAN	1	0	1
	SWAZILAND	1	0	1
	SYRIAN ARAB	1	0	1
	TAIWAN	2	0	2
	TAIWAN ROC	2	0	2
	TANZANIA,	1	0	1
	THAILAND	12	1	13
	TUNISIA	2	0	2
	TURKEY	22	2	24
	UKRAINE	8	0	8
	UNITED	1	0	1
	URUGUAY	5	3	8
	VENEZUELA	25	0	25
	VIET NAM	1	0	1
	VIETNAM	6	0	6
	YEMEN	1	0	1
Total		1,004	46	1,050

		Existing Member(s)	New as of 5/1/2016 or later	Total
GME2	United States	9	0	9
	AFGHANISTAN	1	0	1
	ALBANIA	1	0	1
	ANGOLA	1	0	1
	ARGENTINA	3	2	5
	ARMENIA	1	0	1
	BANGLADESH	1	0	1
	BELARUS	1	0	1
	BOLIVIA	4	0	4
	BRAZIL	18	0	18
	BULGARIA	4	0	4
	BURKINA FASO	1	0	1
	CAMEROON	1	0	1
	CHILE	6	1	7
	CHINA	54	1	55
	COLOMBIA	11	1	12
	COSTA RICA	5	0	5
	DOMINICAN	9	0	9
	ECUADOR	16	0	16
	EGYPT	3	1	4
	GABON	2	0	2
	GEORGIA	1	0	1
	GRENADA	2	0	2
	GUATEMALA	1	0	1
	HONDURAS	1	0	1
	INDIA	23	0	23
	INDONESIA	4	0	4
	IRAQ	2	0	2
	JORDAN	3	0	3
	KAZAKHSTAN	4	0	4
LATVIA	2	0	2	

		Existing Member(s)	New as of 5/1/2016 or later	Total
GME2	LEBANON	3	0	3
	LITHUANIA	1	0	1
	MADAGASCAR	1	0	1
	MALAYSIA	6	0	6
	MAURITANIA	1	0	1
	MAURITIUS	1	0	1
	MEXICO	18	0	18
	MONGOLIA	6	1	7
	MOROCCO	2	1	3
	MOZAMBIQUE	1	0	1
	NAMIBIA	1	0	1
	NEPAL	4	1	5
	NIGER	1	0	1
	NIGERIA	4	0	4
	PAKISTAN	4	0	4
	PANAMA	2	0	2
	PARAGUAY	1	0	1
	PEOPLES REP	2	0	2
	PERU	7	0	7
	PHILIPPINES	7	0	7
	POLAND	6	0	6
	RUSSIA	4	0	4
	RUSSIAN	6	0	6
	SENEGAL	1	0	1
	SIERRA LEONE	1	0	1
	SRI LANKA	2	0	2
	TAIWAN ROC	2	0	2
	TAJIKISTAN	2	0	2
	THAILAND	16	2	18
	TUNISIA	1	0	1
TURKEY	17	0	17	

		Existing Member(s)	New as of 5/1/2016 or later	Total
GME2	UNITED	1	0	1
	United States	1	0	1
	URUGUAY	3	0	3
	UZBEKISTAN	19	0	19
	VENEZUELA	2	0	2
	VIET NAM	1	0	1
	VIETNAM	4	0	4
	YEMEN	1	0	1
	Total	358	11	369
GMI	BELARUS	1	0	1
	BRAZIL	2	0	2
	CHINA	2	0	2
	HUNGARY	1	0	1
	KOSOVO	1	0	1
	MEXICO	1	0	1
	PERU	3	0	3
	Total	11	0	11
IND	United States	4,012	48	4,060
	02453-2728	1	0	1
	ANGOLA	1	0	1
	ARGENTINA	1	0	1
	AUSTRALIA	16	0	16
	AUSTRIA	1	0	1
	BAHRAIN	1	0	1
	BERMUDA	1	0	1
	BRAZIL	4	3	7
	CANADA	111	2	113
	CHILE	2	0	2
	CHINA	6	1	7
	COLOMBIA	2	0	2
	COSTA RICA	1	0	1

		Existing Member(s)	New as of 5/1/2016 or later	Total
IND	CZECH	5	0	5
	DENMARK	3	0	3
	ECUADOR	13	0	13
	EGYPT	5	0	5
	FINLAND	1	0	1
	FRANCE	4	0	4
	GERMANY	6	0	6
	GREECE	2	0	2
	HAITI	0	1	1
	HONG KONG	4	0	4
	HONG KONG	1	1	2
	HUNGARY	2	0	2
	INDIA	2	0	2
	IRAN	1	0	1
	IRAQ	1	0	1
	IRELAND	1	0	1
	ISRAEL	3	0	3
	ITALY	5	0	5
	JAPAN	165	7	172
	JORDAN	3	0	3
	Korea, Republic	4	0	4
	KOREA,	1	0	1
	KOREA,	5	0	5
	KOSOVO	2	0	2
	KUWAIT	7	1	8
	LEBANON	1	0	1
	LIBYA	1	0	1
	MALAYSIA	1	0	1
	MEXICO	5	0	5
	NETHERLAND	3	0	3
NEW ZEALAND	4	0	4	

		Existing Member(s)	New as of 5/1/2016 or later	Total
IND	NIGERIA	1	0	1
	NORWAY	5	0	5
	OMAN	5	0	5
	PAKISTAN	1	0	1
	PALESTINIAN	1	0	1
	PARAGUAY	1	0	1
	PEOPLES REP	2	0	2
	PERU	5	0	5
	PHILIPPINES	1	0	1
	PORTUGAL	1	0	1
	QATAR	7	1	8
	SAUDI ARABIA	13	2	15
	SINGAPORE	3	1	4
	SLOVAKIA	1	0	1
	SOUTH AFRICA	2	0	2
	SOUTH KOREA	8	1	9
	SPAIN	4	0	4
	SWEDEN	6	0	6
	SWITZERLAND	1	0	1
	TAIWAN	7	0	7
	TAIWAN ROC	3	0	3
	THAILAND	4	0	4
	TRINIDAD AND	1	0	1
	UGANDA	1	0	1
	UNITED ARAB	27	0	27
	UNITED	12	0	12
	United States	5	0	5
UNITED	6	0	6	
URUGUAY	1	0	1	
VANUATU	1	0	1	
VIET NAM	2	0	2	

		Existing Member(s)	New as of 5/1/2016 or later	Total
IND	VIETNAM	1	0	1
	YEMEN	1	0	1
	Total	4,561	69	4,630
IND2	United States	1,700	16	1,716
	AUSTRALIA	17	0	17
	AUSTRIA	2	0	2
	BAHRAIN	1	0	1
	BENIN	1	0	1
	BRAZIL	3	0	3
	CANADA	105	1	106
	CAYMAN	1	0	1
	CHILE	1	0	1
	CHINA	7	0	7
	COLOMBIA	2	0	2
	COSTA RICA	1	0	1
	CYPRUS	2	0	2
	DENMARK	1	0	1
	FINLAND	1	0	1
	FRANCE	1	0	1
	GERMANY	5	0	5
	HONG KONG	3	0	3
	HONG KONG	8	0	8
	INDIA	3	0	3
	INDONESIA	1	0	1
	IRAQ	1	0	1
	ITALY	4	0	4
	JAPAN	89	1	90
	Korea, Republic	2	0	2
	KOREA,	3	0	3
	KUWAIT	3	0	3
Lao People's	1	0	1	

		Existing Member(s)	New as of 5/1/2016 or later	Total
IND2	LUXEMBOURG	1	0	1
	MACAO	4	0	4
	MALAYSIA	3	0	3
	MARTINIQUE	1	0	1
	NETHERLAND	1	0	1
	NEW	1	0	1
	NEW ZEALAND	2	1	3
	NICARAGUA	1	0	1
	NIGERIA	1	0	1
	NORWAY	1	0	1
	OMAN	1	0	1
	QATAR	12	0	12
	ROMANIA	1	0	1
	SAUDI ARABIA	9	0	9
	SERBIA	1	0	1
	SINGAPORE	3	0	3
	SLOVAKIA	2	0	2
	SOUTH KOREA	8	0	8
	SWITZERLAND	2	0	2
	TAIWAN	6	0	6
	TAIWAN ROC	2	0	2
	THAILAND	1	0	1
	TRINIDAD AND	1	0	1
	TURKEY	2	0	2
	UKRAINE	2	0	2
	UNITED ARAB	8	0	8
	UNITED	5	0	5
United States	4	0	4	
UNITED	2	0	2	
URUGUAY	2	0	2	
VENEZUELA	1	0	1	

		Existing Member(s)	New as of 5/1/2016 or later	Total
IND2	Total	2,060	19	2,079
LIF	United States	42	0	42
	AUSTRALIA	1	0	1
	CANADA	2	0	2
	EGYPT	1	0	1
	ISRAEL	1	0	1
	JAPAN	1	0	1
	UNITED ARAB	1	0	1
	UNITED	2	0	2
	Total	51	0	51
NT	United States	565	15	580
	AUSTRALIA	3	0	3
	AUSTRIA	1	0	1
	CANADA	11	0	11
	CHINA	2	0	2
	COLOMBIA	1	0	1
	ECUADOR	1	0	1
	GERMANY	1	0	1
	HONG KONG	1	0	1
	HONG KONG	1	0	1
	IRAQ	1	0	1
	ITALY	1	0	1
	JAPAN	14	0	14
	KUWAIT	1	0	1
	MARTINIQUE	1	0	1
	MATARA	1	0	1
	MEXICO	2	0	2
	MONGOLIA	0	1	1
	NEW ZEALAND	1	0	1
	PALESTINIAN	2	0	2
PERU	1	0	1	

		Existing Member(s)	New as of 5/1/2016 or later	Total
NT	QATAR	3	0	3
	RUSSIA	1	0	1
	RUSSIAN	1	0	1
	SINGAPORE	1	0	1
	SOUTH KOREA	3	0	3
	SPAIN	1	0	1
	THAILAND	1	0	1
	TURKEY	1	0	1
	UNITED	4	0	4
	Total	628	16	644
NT2	United States	320	5	325
	AUSTRALIA	3	0	3
	CANADA	10	0	10
	HONG KONG	2	0	2
	HUNGARY	1	0	1
	ITALY	1	0	1
	JAPAN	2	0	2
	KOREA,	1	0	1
	KUWAIT	1	0	1
	MACAO	1	0	1
	MEXICO	1	0	1
	NEW ZEALAND	0	1	1
	SAUDI ARABIA	1	0	1
	SINGAPORE	2	0	2
	SOUTH KOREA	1	0	1
	TAIWAN	2	0	2
	UNITED ARAB	1	0	1
	UNITED	1	0	1
	Total	351	6	357
	PTR	United States	358	5
AUSTRALIA		1	0	1

		Existing Member(s)	New as of 5/1/2016 or later	Total
PTR	BRAZIL	1	0	1
	CANADA	11	0	11
	CHINA	6	0	6
	COLOMBIA	3	0	3
	COSTA RICA	3	0	3
	DOMINICAN	2	0	2
	ECUADOR	11	0	11
	EGYPT	1	0	1
	FRANCE	1	0	1
	GERMANY	1	0	1
	HAITI	1	0	1
	ICELAND	1	0	1
	INDONESIA	2	0	2
	IRAQ	1	0	1
	JAPAN	8	0	8
	KUWAIT	1	0	1
	Lao People's	1	0	1
	LITHUANIA	1	0	1
	MACAO	1	0	1
	MEXICO	1	0	1
	MOROCCO	1	0	1
	NEW ZEALAND	2	0	2
	NICARAGUA	2	0	2
	NIGERIA	1	0	1
	PAKISTAN	1	0	1
	PANAMA	1	0	1
	PHILIPPINES	2	1	3
	POLAND	1	0	1
	Puerto Rico	3	0	3
	SAUDI ARABIA	1	0	1
SENEGAL	1	0	1	

		Existing Member(s)	New as of 5/1/2016 or later	Total
PTR	SINGAPORE	1	0	1
	SOUTH AFRICA	1	0	1
	SOUTH KOREA	1	0	1
	SPAIN	2	1	3
	TANZANIA,	4	0	4
	THAILAND	2	0	2
	TURKEY	4	1	5
	UNITED ARAB	3	0	3
	UNITED	4	1	5
	VENEZUELA	1	0	1
	Total	456	9	465
PTR2	United States	200	4	204
	BRAZIL	2	0	2
	CANADA	11	0	11
	CHILE	1	0	1
	CHINA	4	0	4
	COLOMBIA	1	0	1
	CZECH	1	0	1
	GERMANY	1	0	1
	HONG KONG	1	0	1
	INDONESIA	1	0	1
	ISRAEL	1	0	1
	ITALY	1	0	1
	JAPAN	2	0	2
	MACAO	1	0	1
	MEXICO	1	0	1
	PHILIPPINES	1	0	1
	POLAND	1	0	1
	SAUDI ARABIA	4	0	4
	TAIWAN	5	0	5
	THAILAND	1	0	1

		Existing Member(s)	New as of 5/1/2016 or later	Total
PTR2	TURKEY	4	0	4
	UGANDA	0	1	1
	UNITED ARAB	1	0	1
	Total	246	5	251
RET	United States	135	0	135
	BRAZIL	1	0	1
	CANADA	4	0	4
	COLOMBIA	1	0	1
	GERMANY	1	0	1
	ISRAEL	1	0	1
	JAPAN	3	0	3
	MEXICO	1	0	1
	PORTUGAL	1	0	1
	SRI LANKA	1	0	1
	Total	149	0	149
RET2	United States	89	0	89
	AUSTRALIA	1	0	1
	CANADA	1	0	1
	GERMANY	1	0	1
	ISRAEL	3	0	3
	JAPAN	4	0	4
	OMAN	1	0	1
	SOUTH KOREA	1	0	1
	SPAIN	1	0	1
	UNITED	2	0	2
	Total	104	0	104
STU	United States	702	6	708
	AUSTRALIA	8	0	8
	BELGIUM	1	0	1
	BRAZIL	2	0	2
	CANADA	16	0	16

		Existing Member(s)	New as of 5/1/2016 or later	Total
STU	CHINA	3	1	4
	COLOMBIA	1	0	1
	ECUADOR	1	0	1
	GERMANY	2	0	2
	GHANA	1	0	1
	GUATEMALA	1	0	1
	HAITI	1	0	1
	HONG KONG	2	0	2
	HONG KONG	3	1	4
	INDONESIA	1	0	1
	ITALY	1	0	1
	JAPAN	4	2	6
	MALAYSIA	1	0	1
	MEXICO	7	0	7
	NEW ZEALAND	2	0	2
	PAKISTAN	1	0	1
	PHILIPPINES	2	0	2
	RUSSIAN	2	0	2
	SAUDI ARABIA	5	0	5
	SOUTH AFRICA	1	0	1
	SOUTH KOREA	1	0	1
	TAIWAN	1	0	1
	THAILAND	2	0	2
	TURKEY	9	0	9
	UNITED ARAB	1	0	1
	UNITED	7	0	7
UNITED	1	0	1	
Total	793	10	803	
STU2	United States	336	3	339
	ALBANIA	2	0	2
	AUSTRALIA	2	0	2

		Existing Member(s)	New as of 5/1/2016 or later	Total
STU2	BRAZIL	1	0	1
	CAMEROON	2	0	2
	CANADA	17	0	17
	CHINA	1	0	1
	FRANCE	1	0	1
	GERMANY	1	0	1
	HONG KONG	2	0	2
	HONG KONG	1	0	1
	INDONESIA	1	0	1
	ISRAEL	1	0	1
	JAPAN	2	0	2
	Korea, Republic	1	0	1
	KOREA,	1	0	1
	LATVIA	1	0	1
	NEPAL	1	0	1
	OMAN	1	0	1
	Puerto Rico	1	0	1
	SINGAPORE	1	0	1
	UNITED	3	0	3
	United States	1	0	1
Total	381	3	384	
Total	11,154	194	11,348	

This report is based on members paid through 5/31/2016 or later.

Country/State/Province	Total	
02453-2728	1	0.0%
AFGHANISTAN	2	0.0%
ALBANIA	4	0.0%
ALGERIA	3	0.0%
ANGOLA	2	0.0%
ARGENTINA	27	0.2%
ARMENIA	2	0.0%
AUSTRALIA	52	0.5%
AUSTRIA	4	0.0%
AZERBAIJAN	6	0.1%
BAHRAIN	3	0.0%
BANGLADESH	14	0.1%
BELARUS	2	0.0%
BELGIUM	1	0.0%
BELIZE	3	0.0%
BENIN	1	0.0%
BERMUDA	1	0.0%
BOLIVIA	23	0.2%
BOSNIA AND HERZEGOVINA	1	0.0%
BRAZIL	100	0.9%
BULGARIA	7	0.1%
BURKINA FASO	1	0.0%
CAMBODIA	4	0.0%
CAMEROON	5	0.0%
CANADA		
CANADA	4	
CANADA	29	
CANADA	83	
CANADA	11	
CANADA	8	
CANADA	1	
CANADA	10	
CANADA	121	
CANADA	22	
CANADA	13	
CANADA	302	2.7%
CAYMAN ISLANDS	1	0.0%
CHILE	19	0.2%
CHINA	193	1.7%
COLOMBIA	37	0.3%
COMOROS	1	0.0%
COSTA RICA	24	0.2%
CROATIA	5	0.0%
CUBA	1	0.0%
CYPRUS	2	0.0%
CZECH REPUBLIC	6	0.1%
DENMARK	4	0.0%
DOMINICA	1	0.0%
DOMINICAN REPUBLIC	27	0.2%
ECUADOR	138	1.2%
EGYPT	44	0.4%
EL SALVADOR	2	0.0%
FINLAND	2	0.0%
FRANCE	7	0.1%
GABON	2	0.0%
GEORGIA	6	0.1%
GERMANY	19	0.2%

GHANA	1	0.0%
GREECE	2	0.0%
GRENADA	2	0.0%
GUATEMALA	16	0.1%
HAITI	14	0.1%
HONDURAS	6	0.1%
HONG KONG	14	0.1%
HONG KONG SAR CHINA	19	0.2%
HUNGARY	7	0.1%
ICELAND	1	0.0%
INDIA	88	0.8%
INDONESIA	17	0.1%
IRAN	4	0.0%
IRAN, ISLAMIC REPUBLIC OF	1	0.0%
IRAQ	9	0.1%
IRELAND	1	0.0%
ISRAEL	11	0.1%
ITALY	13	0.1%
JAMAICA	2	0.0%
JAPAN	305	2.7%
JORDAN	7	0.1%
KAZAKHSTAN	5	0.0%
Korea, Republic Of	7	0.1%
KOREA, REPUBLIC OF	1	0.0%
KOREA, REPUBLIC OF	10	0.1%
KOSOVO (UNMIK)	3	0.0%
KUWAIT	14	0.1%
KYRGYZSTAN	1	0.0%
Lao People's Dem Republic	3	0.0%
LATVIA	4	0.0%
LEBANON	10	0.1%
LIBYA	1	0.0%
LITHUANIA	2	0.0%
LUXEMBOURG	1	0.0%
MACAO	7	0.1%
MACEDONIA	1	0.0%
MADAGASCAR	3	0.0%
MALAYSIA	23	0.2%
MALI	1	0.0%
MARTINIQUE	2	0.0%
MATARA	1	0.0%
MAURITANIA	3	0.0%
MAURITIUS	1	0.0%
MEXICO	83	0.7%
MOLDOVA, REPUBLIC OF	1	0.0%
MONGOLIA	12	0.1%
MOROCCO	33	0.3%
MOZAMBIOUE	1	0.0%
MYANMAR	2	0.0%
NAMIBIA	1	0.0%
NEPAL	22	0.2%
NETHERLANDS	4	0.0%
NEW CALEDONIA	1	0.0%
NEW ZEALAND	14	0.1%
NICARAGUA	6	0.1%
NIGER	1	0.0%
NIGERIA	14	0.1%
NORWAY	7	0.1%
OMAN	8	0.1%
PAKISTAN	28	0.2%
PALESTINIAN TERRITORY	6	0.1%

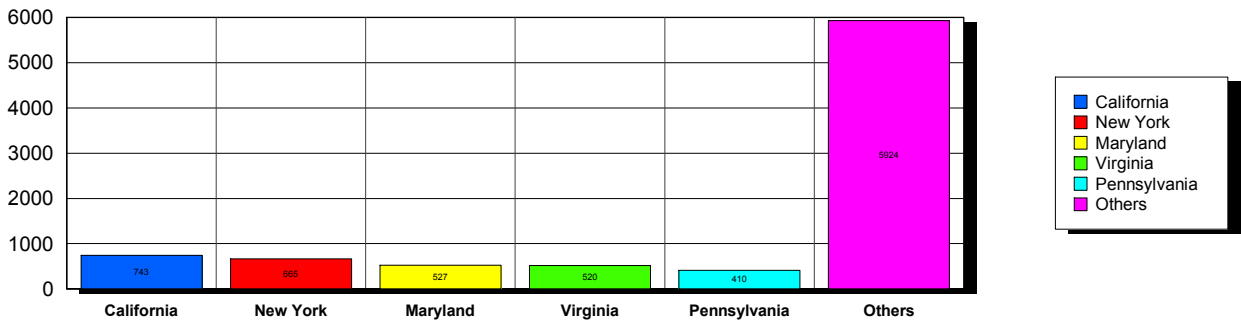
PANAMA		23	0.2%
PARAGUAY		5	0.0%
PEOPLES REP OF CHINA		27	0.2%
PERU		111	1.0%
PHILIPPINES		32	0.3%
POLAND		12	0.1%
PORTUGAL		2	0.0%
Puerto Rico		4	0.0%
OATAR		23	0.2%
ROMANIA		3	0.0%
RUSSIA		10	0.1%
RUSSIAN FEDERATION		17	0.1%
RWANDA		3	0.0%
SAUDI ARABIA		35	0.3%
SENEGAL		3	0.0%
SERBIA		7	0.1%
SIERRA LEONE		1	0.0%
SINGAPORE		12	0.1%
SLOVAKIA		4	0.0%
SOUTH AFRICA		5	0.0%
SOUTH KOREA		24	0.2%
SPAIN		9	0.1%
SRI LANKA		7	0.1%
SUDAN		1	0.0%
SWAZILAND		1	0.0%
SWEDEN		6	0.1%
SWITZERLAND		3	0.0%
SYRIAN ARAB REPUBLIC		1	0.0%
TAIWAN		23	0.2%
TAIWAN ROC		9	0.1%
TAJKISTAN		2	0.0%
TANZANIA, UNITED REPUBLIC		5	0.0%
THAILAND		42	0.4%
TRINIDAD AND TOBAGO		2	0.0%
TUNISIA		3	0.0%
TURKEY		62	0.5%
UGANDA		2	0.0%
UKRAINE		10	0.1%
UNITED ARAB EMIRATES		42	0.4%
UNITED KINGDOM		39	0.3%
United States		11	0.1%
UNITED STATES OF AMERICA		13	0.1%
URUGUAY		14	0.1%
USA			
USA		60	
USA	Alabama	95	
USA	Alaska	14	
USA	American Embassy	12	
USA	Arizona	166	
USA	Arkansas	57	
USA	Armed Forces	8	
USA	Armed Frcees Americas	3	
USA	British Columbia	2	
USA	California	724	
USA	Colorado	138	
USA	Connecticut	133	
USA	Delaware	86	
USA	District of Columbia	195	
USA	Florida	336	
USA	Georgia	167	
USA	Guam	1	

USA	Hawaii	52	
USA	Idaho	51	
USA	Illinois	309	
USA	Indiana	150	
USA	Iowa	94	
USA	Kansas	144	
USA	Kentucky	85	
USA	Louisiana	47	
USA	Maine	50	
USA	Maryland	513	
USA	Massachusetts	316	
USA	Michigan	246	
USA	Minnesota	124	
USA	Mississippi	63	
USA	Missouri	194	
USA	Montana	13	
USA	Nebraska	56	
USA	Nevada	39	
USA	New Hampshire	51	
USA	New Jersey	251	
USA	New Mexico	48	
USA	New York	651	
USA	North Carolina	175	
USA	North Dakota	21	
USA	Ohio	273	
USA	Oklahoma	55	
USA	Ontario	1	
USA	Oregon	205	
USA	Pennsylvania	406	
USA	Prince Edward Island	1	
USA	Puerto Rico	19	
USA	Rhode Island	55	
USA	Saskatchewan	1	
USA	South Carolina	52	
USA	South Dakota	14	
USA	Tennessee	106	
USA	Texas	387	
USA	Utah	83	
USA	Vermont	64	
USA	Virginia	508	
USA	Washington	269	
USA	West Virginia	34	
USA	Wisconsin	128	
USA	Wyoming	10	
USA		8,611	75.9%
UZBEKISTAN		19	0.2%
VANUATU		1	0.0%
VENEZUELA		29	0.3%
VIET NAM		4	0.0%
VIETNAM		11	0.1%
YEMEN		3	0.0%
Grand Total:		11,348	

157 distinct countries represented.

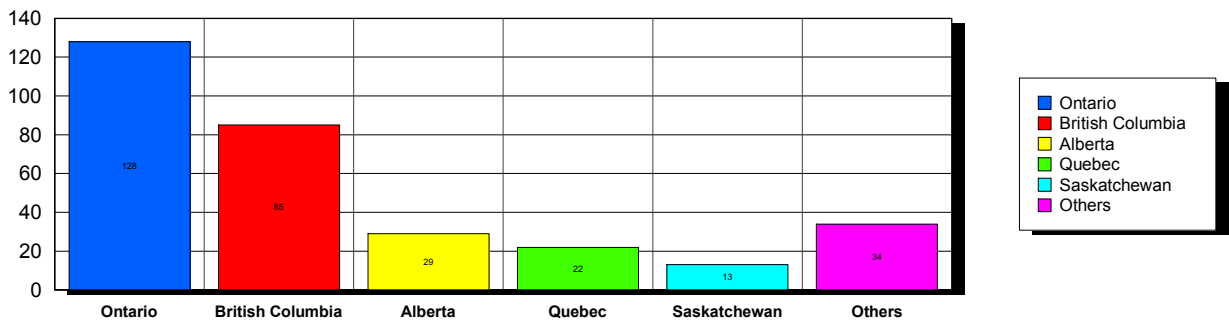
USA

Top 5 States per Country

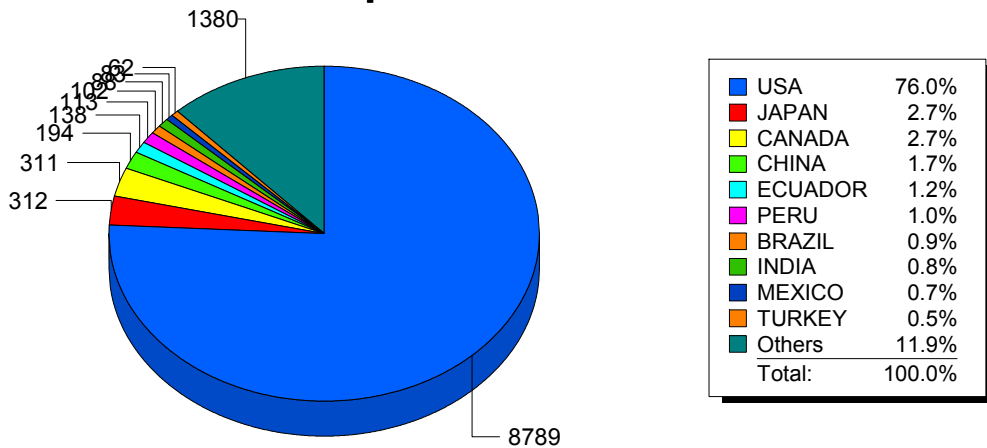


CANADA

Top 5 States per Country



Top 10 Countries



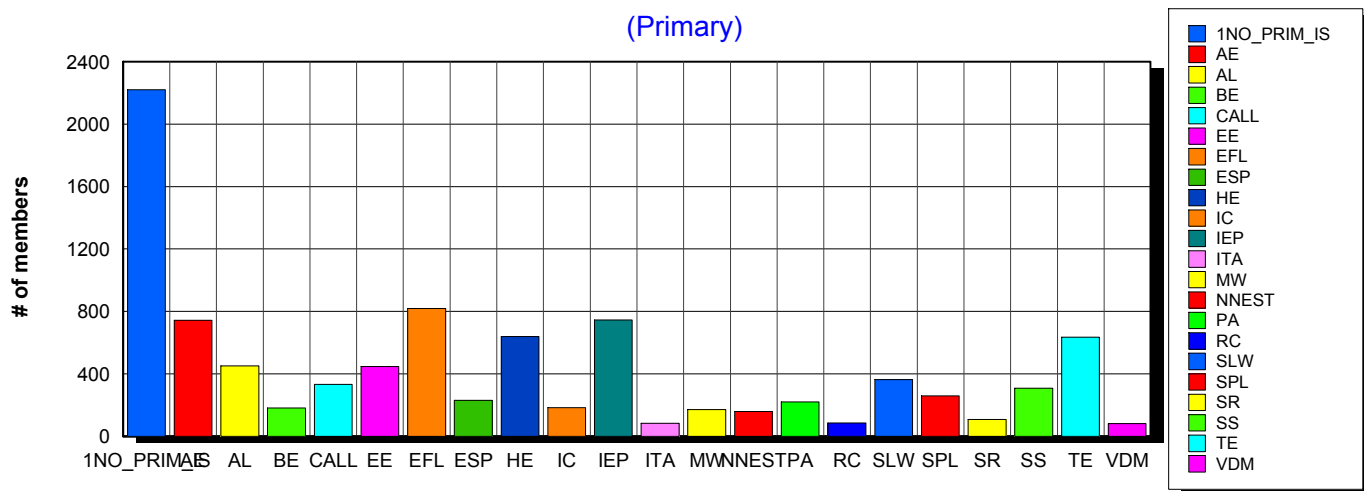
Basic statistics on Primary vs. other memberships in interest sections. For members paid through 5/31/2016 or later.

		<i>Primary versus other</i>		
No Primary Interest Section	7.0%	2,231	2,220	11
Adult Education	6.2%	1,984	743	1,241
Applied Linguistics	5.8%	1,849	451	1,398
Bilingual Education	3.1%	984	182	802
Computer-Assisted Language Learning	5.1%	1,615	332	1,283
Elementary Education	3.2%	1,033	446	587
English as a Foreign Language	6.9%	2,183	819	1,364
English for Specific Purposes	4.4%	1,393	230	1,163
Higher Education	6.2%	1,986	638	1,348
Intercultural Communication	4.8%	1,534	183	1,351
Intensive English Programs	6.2%	1,979	746	1,233
International Teaching Assistants	1.9%	609	82	527
Materials Writers	3.4%	1,086	170	916
Nonnative English Speakers in TESOL	2.9%	911	158	753
Program Administration	3.5%	1,125	220	905
Refugee Concerns	2.3%	718	84	634
Second Language Writing	6.1%	1,941	362	1,579
Speech, Pronunciation, and Listening	5.3%	1,692	259	1,433
Social Responsibility	2.2%	714	107	607
Secondary Schools	2.8%	899	307	592
Teacher Education	7.2%	2,293	634	1,659
Video & Digital Media	3.5%	1,106	81	1,025
<i>9,480 distinct members</i>		Total # of IS memberships	31,865	9,454 22,411

The total count is the number of IS memberships total and may either be LESS or MORE than the actual number of individual members of TESOL. Due to open access to Interest Sections, these numbers may fluctuate considerably each month. For instance, one member may have selected four interest sections, while some members may belong to none.

Interest Sections

(Primary)

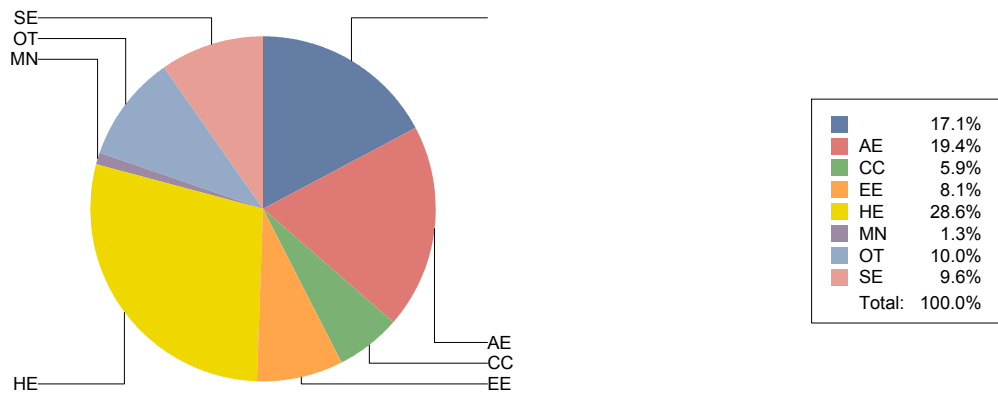


Basic Statistics on Area of Work (Members paid through >= 5/31/2016)

		1,930	17.1%
Adult Education	AE	2,186	19.4%
Community/2yr College	CC	660	5.9%
Elementary Education	EE	915	8.1%
Postsecondary Education	HE	3,227	28.6%
Mainstream	MN	143	1.3%
Other	OT	1,128	10.0%
Secondary Education	SE	1,085	9.6%
		11,274	

Only members who selected an area of work are included on this report. Other members may not have responded to this question and are excluded from the count.

Areas of Work



(Blanks indicate no response)

Statistics on Areas of Interest (Members paid through >= 5/31/2016)

<u>CODE</u>	<u>DESCRIPTION</u>	<u>TOTAL*</u>	<u>% of TOTAL*</u>
TE	Teacher education	1,552	5%
CURRICULUM	Materials development/Curriculum	1,508	4%
EFL	English as a foreign language	1,436	4%
SLA	Second language acquisition	1,415	4%
AL	Applied linguistics	1,365	4%
HE	Higher education	1,311	4%
WRITING	Writing/composition	1,294	4%
IC	Multiculturalism/intercultural communications	1,290	4%
CALL	Technology in education	1,270	4%
IEP	Intensive English programs	1,236	4%
AE	Adult education	1,210	4%
PROFDEV	Professional development	1,159	3%
CONTENT	Content-based instruction	1,137	3%
SP	Speaking/pronunciation	1,061	3%
READING	Reading/literacy	1,040	3%
GRAMMAR	Grammar	1,007	3%
ASSESS	Assessment/testing	974	3%
ESP	English for specific purposes	917	3%
RS	Research	889	3%
PA	Program administration	712	2%
DISTANCE	Distance learning/Online Education	706	2%
VOCAB	Vocabulary/Lexicon	696	2%
BE	Bilingual education	648	2%
SOCIAL	Social/global/political concerns	600	2%
ISKILL	Integrated Skills	577	2%
LISTEN	Listening	576	2%
WORKPLACE	Workplace English instruction/Business English	551	2%
VI	Video and digital media	538	2%
EE	Elementary/primary education	519	2%
SS	Secondary education	505	1%
COMMCOLL	Community college/technical ed	455	1%
LINGUISTICS	Theoretical Linguistics	386	1%
RC	Refugee concerns	386	1%
STANDARDS	Standards	371	1%
LIT	Literature	355	1%
ITA	International teaching assistants	341	1%
FAMILY	Community/family outreach	291	1%
NNES	NNES/NES issues	286	1%
EMPLOYMENT	Employment issues/Certification	277	1%
PUBLICPOLICY	Public policy	239	1%
LDSN	Learning Disorders/Special Needs	232	1%
ACCRED	Accreditation	228	1%
MAINSTREAMING	Mainstreaming	206	1%
ARTS	Arts/Media/Science/Math/Social Science	159	0%
STYLISTICS	Stylistics	62	0%

Sorted in order of prevalence.

** Note: Members are encouraged to choose multiple areas of interest and some members do not choose any areas of interest. The total number of distinct members (4,283) represented in this report is less than the total number of active members as indicated elsewhere in this report.*

Areas of interest are separate from official TESOL interest sections. Areas of interest represent distinct areas in which a member may be interested, rather than official entities in which a member is involved.

Areas of interest which have a very low count may be recent additions to the AOI list, or may reflect overall trends in membership.

Statistics on Areas of Expertise (Members paid through >= 5/31/2016)

<u>CODE</u>	<u>DESCRIPTION</u>	<u>TOTAL*</u>	<u>% of TOTAL*</u>
EFL	English as a foreign language	933	6%
CURRICULUM	Materials development/Curriculum	833	5%
AE	Adult education	799	5%
WRITING	Writing/composition	764	5%
IEP	Intensive English programs	759	5%
TE	Teacher education	735	5%
AL	Applied linguistics	711	5%
HE	Higher education	685	4%
SLA	Second language acquisition	609	4%
CONTENT	Content-based instruction	585	4%
GRAMMAR	Grammar	567	4%
CALL	Technology in education	488	3%
IC	Multiculturalism/intercultural communications	487	3%
PROFDEV	Professional development	463	3%
ESP	English for specific purposes	449	3%
SP	Speaking/pronunciation	438	3%
READING	Reading/literacy	434	3%
PA	Program administration	399	3%
ASSESS	Assessment/testing	392	2%
EE	Elementary/primary education	346	2%
ISKILL	Integrated Skills	313	2%
DISTANCE	Distance learning/Online Education	296	2%
COMMCOLL	Community college/technical ed	277	2%
SS	Secondary education	270	2%
RS	Research	265	2%
BE	Bilingual education	250	2%
WORKPLACE	Workplace English instruction/Business English	238	2%
LISTEN	Listening	228	1%
VOCAB	Vocabulary/Lexicon	200	1%
LIT	Literature	179	1%
VI	Video and digital media	141	1%
SOCIAL	Social/global/political concerns	140	1%
NNES	NNES/NES issues	126	1%
ITA	International teaching assistants	123	1%
ACCRED	Accreditation	118	1%
LINGUISTICS	Theoretical Linguistics	91	1%
MAINSTREAMING	Mainstreaming	87	1%
STANDARDS	Standards	86	1%
FAMILY	Community/family outreach	82	1%
RC	Refugee concerns	81	1%
ARTS	Arts/Media/Science/Math/Social Science	77	0%
LDSN	Learning Disorders/Special Needs	72	0%
EMPLOYMENT	Employment issues/Certification	69	0%
PUBLICPOLICY	Public policy	49	0%
STYLISTICS	Stylistics	14	0%

Sorted in order of prevalence.

** Note: Members are encouraged to choose multiple areas of expertise and some members do not choose any areas of expertise. The total number of distinct members (3,463) represented in this report is less than the total number of active members as indicated elsewhere in this report.*

Areas of Expertise are separate from official TESOL interest sections or Areas of Interest. Areas of expertise represent distinct areas in which a member may be experienced in, rather than official entities in which a member is involved.

Areas of interest which have a very low count may be recent additions to the AOI list, or may reflect overall trends in membership.