

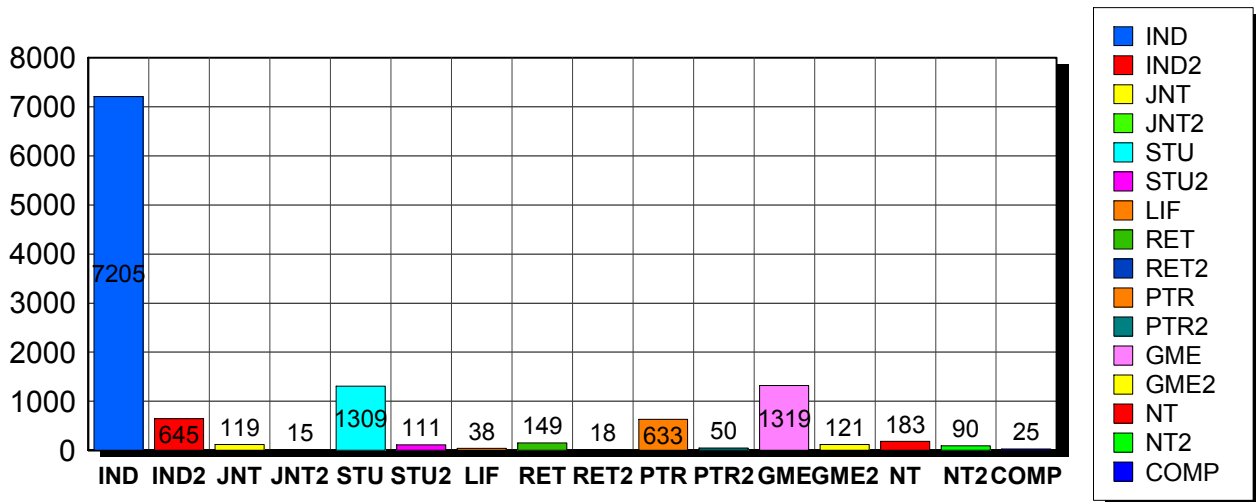
This report is based on members paid through 1/31/2010 or later.

2/9/2010

Membership Statistics: Grand totals for basic membership, by member type

		<u># Memberships</u>	<u># Members</u>
IND	BASIC	7,205	7,205
IND2	BASIC	645	645
JNT	BASIC	119	238
JNT2	BASIC	15	30
STU	BASIC	1,309	1,309
STU2	BASIC	111	111
LIF	BASIC	38	38
RET	BASIC	149	149
RET2	BASIC	18	18
PTR	BASIC	633	633
PTR2	BASIC	50	50
GME	BASIC	1,319	1,319
GME2	BASIC	121	121
NT	BASIC	183	183
NT2	BASIC	90	90
COMP	BASIC	25	25
Grand Total:		12,030	12,164

Member Types



Note: in all general statistic reports, joint household memberships are treated as "one" member EXCEPT in the second column of this report, where joints are counted as two people, providing the most accurate count of the number of TESOL members.

This report is based on members paid through 1/31/2010 or later.

Country/State/Province	Total	
AFGHANISTAN	1	0.0%
ALBANIA	5	0.0%
ALGERIA	7	0.1%
ANGOLA	2	0.0%
ARGENTINA	26	0.2%
ARMENIA	4	0.0%
AUSTRALIA	58	0.5%
AUSTRIA	4	0.0%
AZERBAIJAN	5	0.0%
BAHRAIN	9	0.1%
BANGLADESH	8	0.1%
BELARUS	2	0.0%
BELGIUM	1	0.0%
BOLIVIA	54	0.4%
BOSNIA AND HERZEGOVINA	1	0.0%
BRAZIL	96	0.8%
BRUNEI DARUSSALAM	1	0.0%
BULGARIA	1	0.0%
BURKINA FASO	5	0.0%
CAMBODIA	5	0.0%
CAMEROON	44	0.4%
Canada	1	0.0%
CANADA		
<i>CANADA</i>	<i>2</i>	
<i>CANADA Alberta</i>	<i>48</i>	
<i>CANADA British Columbia</i>	<i>97</i>	
<i>CANADA Manitoba</i>	<i>16</i>	
<i>CANADA New Brunswick</i>	<i>18</i>	
<i>CANADA Newfoundland</i>	<i>4</i>	
<i>CANADA North Dakota</i>	<i>1</i>	
<i>CANADA Nova Scotia</i>	<i>7</i>	
<i>CANADA Nunavut</i>	<i>1</i>	
<i>CANADA Ontario</i>	<i>107</i>	
<i>CANADA Prince Edward Island</i>	<i>2</i>	
<i>CANADA Quebec</i>	<i>35</i>	
<i>CANADA Saskatchewan</i>	<i>7</i>	
<i>CANADA Yukon Territory</i>	<i>1</i>	
CANADA	346	2.9%
CHILE	18	0.1%
CHINA	82	0.7%
COLOMBIA	30	0.2%
COSTA RICA	20	0.2%
CROATIA	2	0.0%
CYPRUS	4	0.0%
CZECH REPUBLIC	8	0.1%
DENMARK	2	0.0%
DOMINICAN REPUBLIC	13	0.1%
ECUADOR	26	0.2%
EGYPT	29	0.2%
EL SALVADOR	4	0.0%
ESTONIA	2	0.0%
FINLAND	7	0.1%
FRANCE	16	0.1%
GEORGIA	12	0.1%
GERMANY	20	0.2%
GREECE	19	0.2%
GUAM	3	0.0%

GUATEMALA	14	0.1%
HAITI	13	0.1%
HONDURAS	3	0.0%
HONG KONG	11	0.1%
HONG KONG SAR CHINA	25	0.2%
HUNGARY	5	0.0%
ICELAND	3	0.0%
INDIA	25	0.2%
INDONESIA	44	0.4%
IRAN	5	0.0%
IRAQ	16	0.1%
IRELAND	5	0.0%
ISRAEL	27	0.2%
ITALY	29	0.2%
JAPAN	459	3.8%
JORDAN	7	0.1%
KAZAKHSTAN	11	0.1%
KOREA, REPUBLIC OF	29	0.2%
KOSOVO (UNMIK)	1	0.0%
KUWAIT	18	0.1%
KYRGYZSTAN	2	0.0%
LAOS	10	0.1%
LATVIA	1	0.0%
LEBANON	8	0.1%
LIBYA	4	0.0%
LITHUANIA	4	0.0%
MACAO	11	0.1%
MACEDONIA	4	0.0%
MADAGASCAR	10	0.1%
MALAYSIA	16	0.1%
MALDIVES	1	0.0%
MALTA	1	0.0%
MARSHALL ISLANDS	5	0.0%
MAURITANIA	2	0.0%
MEXICO	178	1.5%
MOLDOVA, REPUBLIC OF	3	0.0%
MONGOLIA	6	0.0%
MOROCCO	31	0.3%
MOZAMBIQUE	1	0.0%
MYANMAR	3	0.0%
NEPAL	5	0.0%
NETHERLANDS	4	0.0%
NETHERLANDS ANTILLES	2	0.0%
NEW ZEALAND	15	0.1%
NICARAGUA	9	0.1%
NIGER	1	0.0%
NIGERIA	1	0.0%
OMAN	12	0.1%
PAKISTAN	14	0.1%
PALESTINIAN TERRITORY	1	0.0%
PANAMA	20	0.2%
PAPUA NEW GUINEA	1	0.0%
PARAGUAY	7	0.1%
PEOPLES REP OF CHINA	52	0.4%
PERU	90	0.7%
PHILIPPINES	55	0.5%
POLAND	11	0.1%
PORTUGAL	1	0.0%
OATAR	29	0.2%
ROMANIA	3	0.0%
RUSSIA	44	0.4%

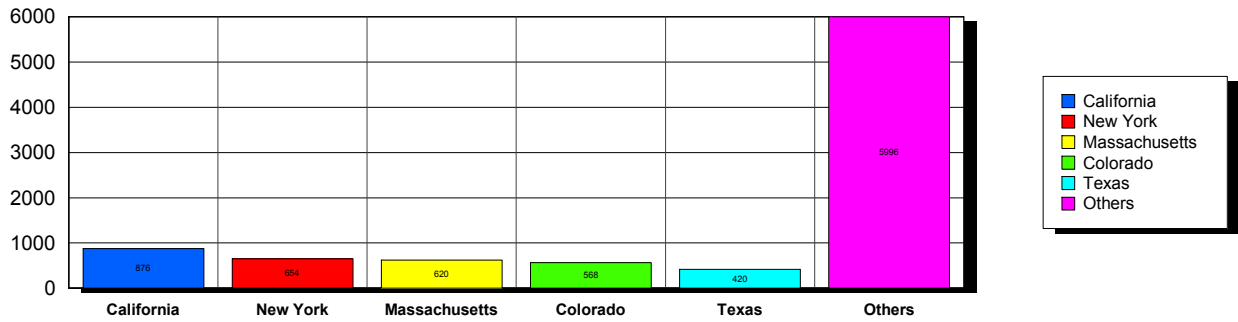
RUSSIAN FEDERATION	8	0.1%
RWANDA	2	0.0%
SAUDI ARABIA	36	0.3%
SENEGAL	10	0.1%
SERBIA	5	0.0%
SIERRA LEONE	1	0.0%
SINGAPORE	18	0.1%
SLOVAKIA	4	0.0%
SOUTH AFRICA	7	0.1%
SOUTH KOREA	59	0.5%
SPAIN	10	0.1%
SRI LANKA	2	0.0%
SUDAN	6	0.0%
SWAZILAND	1	0.0%
SWEDEN	7	0.1%
SWITZERLAND	9	0.1%
SYRIAN ARAB REPUBLIC	3	0.0%
TAIWAN	24	0.2%
TAIWAN ROC	50	0.4%
TAIWAN, PROVINCE OF CHINA	1	0.0%
TAJKISTAN	1	0.0%
THAILAND	45	0.4%
TRINIDAD AND TOBAGO	1	0.0%
TUNISIA	12	0.1%
TURKEY	48	0.4%
UGANDA	1	0.0%
UKRAINE	27	0.2%
UNITED ARAB EMIRATES	55	0.5%
UNITED KINGDOM	56	0.5%
UNITED STATES OF AMERICA	7	0.1%
URUGUAY	22	0.2%
US MINOR OUTLYING ISLANDS	1	0.0%
USA		
USA	14	
USA	Alabama	48
USA	Alaska	23
USA	American Embassy	21
USA	Arizona	194
USA	Arkansas	87
USA	Armed Forces	9
USA	Armed Frces Americas	1
USA	California	866
USA	Colorado	563
USA	Connecticut	157
USA	Delaware	26
USA	District of Columbia	113
USA	Florida	308
USA	Georgia	210
USA	Guam	3
USA	Hawaii	67
USA	Idaho	34
USA	Illinois	325
USA	Indiana	162
USA	Iowa	114
USA	Kansas	114
USA	Kentucky	68
USA	Lousiana	39
USA	Maine	52
USA	Manitoba	2
USA	Marshall Islands	1

USA	Maryland	288	
USA	Massachusetts	613	
USA	Michigan	205	
USA	Minnesota	189	
USA	Mississippi	51	
USA	Missouri	178	
USA	Montana	23	
USA	N Mariana Islands	1	
USA	Nebraska	50	
USA	Nevada	50	
USA	New Hampshire	87	
USA	New Jersey	264	
USA	New Mexico	63	
USA	New York	647	
USA	North Carolina	107	
USA	North Dakota	23	
USA	Ohio	202	
USA	Oklahoma	75	
USA	Ontario	1	
USA	Oregon	176	
USA	Pennsylvania	339	
USA	Puerto Rico	43	
USA	Rhode Island	92	
USA	South Carolina	47	
USA	South Dakota	13	
USA	Tennessee	91	
USA	Texas	423	
USA	Utah	119	
USA	Vermont	81	
USA	Virginia	340	
USA	Washington	270	
USA	West Virginia	29	
USA	Wisconsin	178	
USA	Wyoming	35	
USA		9,014	74.9%
UZBEKISTAN		3	0.0%
VENEZUELA		16	0.1%
VIET NAM		7	0.1%
VIETNAM		15	0.1%
VIRGIN ISLANDS, U.S.		3	0.0%
YEMEN		4	0.0%
Grand Total:		12,032	

142 distinct countries represented.

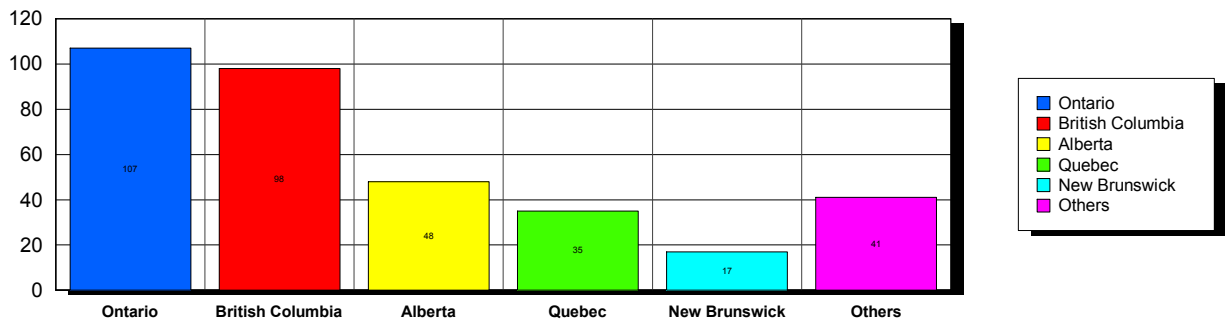
USA

Top 5 States per Country

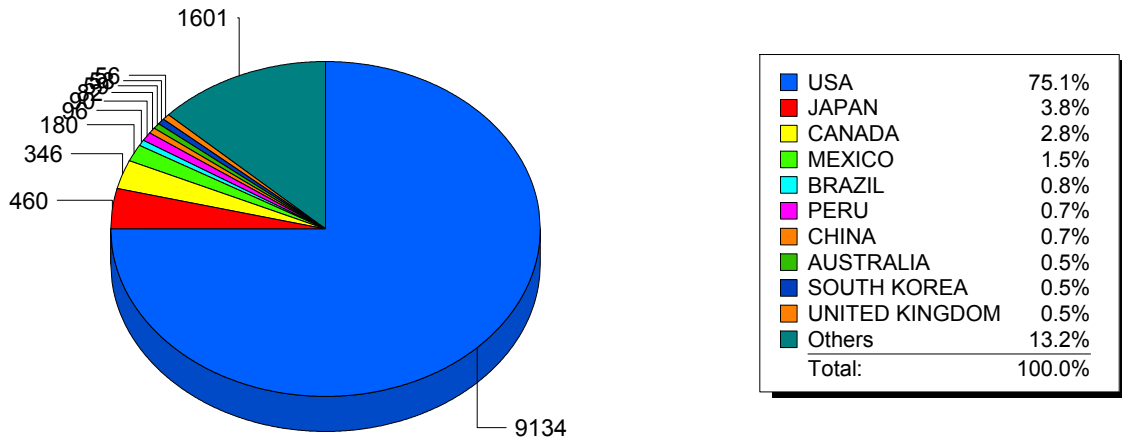


CANADA

Top 5 States per Country



Top 10 Countries



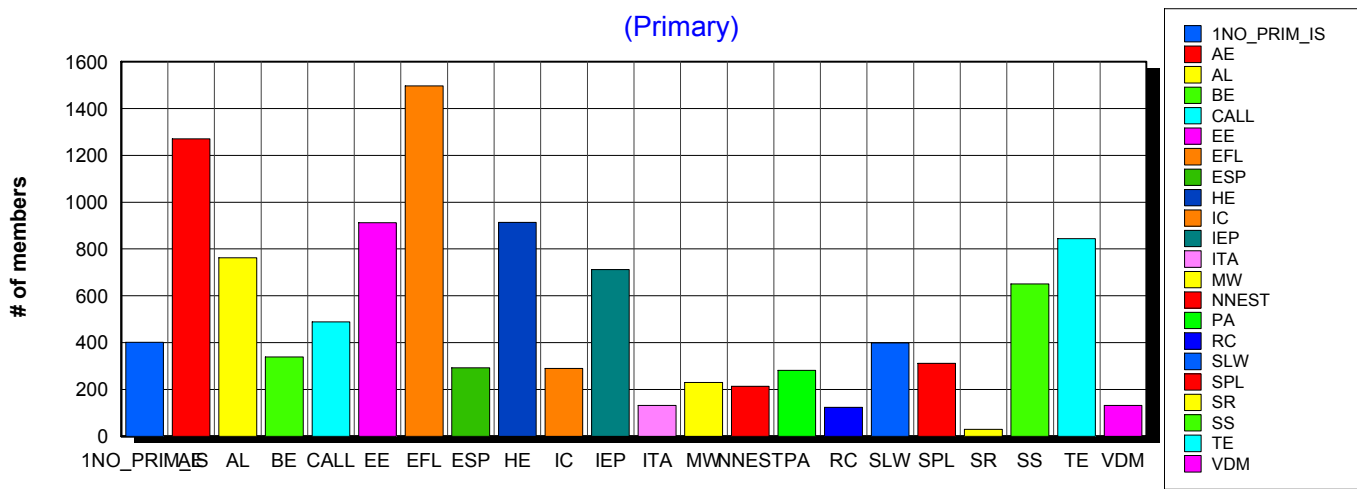
Basic statistics on Primary vs. other memberships in interest sections. For members paid through 1/31/2010 or later.

			<i>Primary versus other</i>	
No Primary Interest Section	1.1%	402	401	1
Adult Education	7.4%	2,688	1,270	1,418
Applied Linguistics	6.1%	2,221	762	1,459
Bilingual Education	4.1%	1,464	339	1,125
Computer-Assisted Language Learning	5.3%	1,913	488	1,425
Elementary Education	5.0%	1,800	912	888
English as a Foreign Language	8.6%	3,119	1,497	1,622
English for Specific Purposes	4.4%	1,583	292	1,291
Higher Education	6.2%	2,236	914	1,322
Intercultural Communication	4.8%	1,719	290	1,429
Intensive English Programs	5.5%	1,992	712	1,280
International Teaching Assistants	2.5%	915	131	784
Materials Writers	3.4%	1,226	230	996
Nonnative English Speakers in TESOL	2.9%	1,062	213	849
Program Administration	3.3%	1,181	282	899
Refugee Concerns	2.2%	811	124	687
Second Language Writing	5.7%	2,071	398	1,673
Speech, Pronunciation, and Listening	5.1%	1,845	312	1,533
Social Responsibility	1.3%	476	30	446
Secondary Schools	4.2%	1,500	651	849
Teacher Education	7.3%	2,648	844	1,804
Video & Digital Media	3.5%	1,250	131	1,119
<i>11,227 distinct members</i>		Total # of IS memberships	36,122	11,223
			24,899	

The total count is the number of IS memberships total and may either be LESS or MORE than the actual number of individual members of TESOL. Due to open access to Interest Sections, these numbers may fluctuate considerably each month. For instance, one member may have selected four interest sections, while some members may belong to none.

Interest Sections

(Primary)

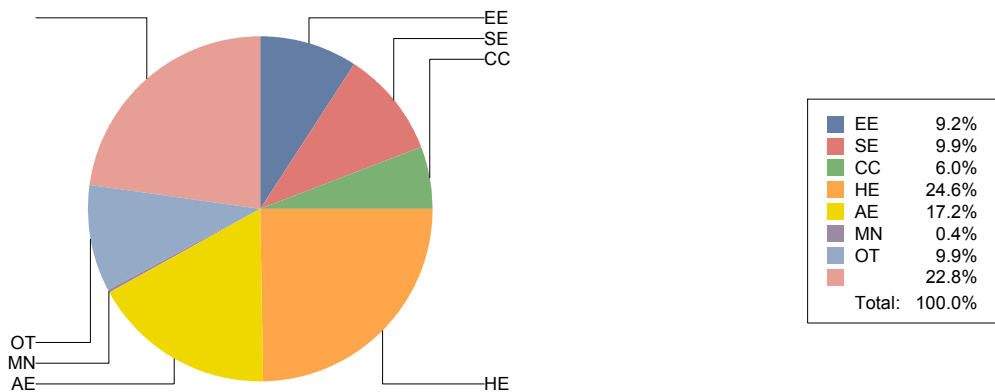


Basic Statistics on Area of Work (Members paid through >= 1/31/2010)

Elementary Education	EE	1,092	9.2%
Secondary Education	SE	1,186	9.9%
Community/2yr College	CC	719	6.0%
Postsecondary Education	HE	2,936	24.6%
Adult Education	AE	2,047	17.2%
Mainstream	MN	43	0.4%
Other	OT	1,184	9.9%
		2,724	22.8%
		11,931	

Only members who selected an area of work are included on this report. Other members may not have responded to this question and are excluded from the count.

Areas of Work



(Blanks indicate no response)

Statistics on Areas of Interest (Members paid through >= 1/31/2010)

<u>CODE</u>	<u>DESCRIPTION</u>	<u>TOTAL*</u>	<u>% of TOTAL*</u>
EFL	English as a foreign language	2,966	5%
TE	Teacher education	2,699	4%
CURRICULUM	Materials development/Curriculum	2,669	4%
SLA	Second language acquisition	2,619	4%
IC	Multiculturalism/intercultural communications	2,495	4%
AL	Applied linguistics	2,453	4%
AE	Adult education	2,359	4%
CALL	Technology in education	2,243	4%
WRITING	Writing/composition	2,229	4%
CONTENT	Content-based instruction	2,173	4%
HE	Higher education	2,057	3%
PROFDEV	Professional development	2,015	3%
IEP	Intensive English programs	2,000	3%
READING	Reading/literacy	1,924	3%
SP	Speaking/pronunciation	1,895	3%
ASSESS	Assessment/testing	1,768	3%
GRAMMAR	Grammar	1,734	3%
ESP	English for specific purposes	1,691	3%
BE	Bilingual education	1,536	2%
RS	Research	1,516	2%
EE	Elementary/primary education	1,264	2%
PA	Program administration	1,230	2%
DISTANCE	Distance learning/Online Education	1,152	2%
SS	Secondary education	1,106	2%
VOCAB	Vocabulary/Lexicon	1,080	2%
SOCIAL	Social/global/political concerns	1,075	2%
WORKPLACE	Workplace English instruction/Business English	960	2%
LISTEN	Listening	935	2%
ISKILL	Integrated Skills	933	2%
VI	Video and digital media	933	2%
COMMCOLL	Community college/technical ed	812	1%
LINGUISTICS	Theoretical Linguistics	722	1%
RC	Refugee concerns	719	1%
LIT	Literature	717	1%
STANDARDS	Standards	704	1%
ITA	International teaching assistants	676	1%
FAMILY	Community/family outreach	604	1%
EMPLOYMENT	Employment issues/Certification	482	1%
LDSN	Learning Disorders/Special Needs	471	1%
PUBLICPOLICY	Public policy	459	1%
MAINSTREAMING	Mainstreaming	446	1%
NNES	NNES/NES issues	426	1%
ARTS	Arts/Media/Science/Math/Social Science	360	1%
ACCRED	Accreditation	307	0%
STYLISTICS	Stylistics	128	0%

Sorted in order of prevalence.

** Note: Members are encouraged to choose multiple areas of interest and some members do not choose any areas of interest. The total number of distinct members (8,506) represented in this report is less than the total number of active members as indicated elsewhere in this report.*

Areas of interest are separate from official TESOL interest sections. Areas of interest represent distinct areas in which a member may be interested, rather than official entities in which a member is involved.

Areas of interest which have a very low count may be recent additions to the AOI list, or may reflect overall trends in membership.

Statistics on Areas of Expertise (Members paid through >= 1/31/2010)

<u>CODE</u>	<u>DESCRIPTION</u>	<u>TOTAL*</u>	<u>% of TOTAL*</u>
EFL	English as a foreign language	1,813	7%
AE	Adult education	1,434	6%
CURRICULUM	Materials development/Curriculum	1,231	5%
WRITING	Writing/composition	1,085	4%
AL	Applied linguistics	1,083	4%
SLA	Second language acquisition	1,059	4%
TE	Teacher education	1,040	4%
IEP	Intensive English programs	1,018	4%
HE	Higher education	945	4%
CONTENT	Content-based instruction	922	4%
GRAMMAR	Grammar	873	3%
IC	Multiculturalism/intercultural communications	811	3%
EE	Elementary/primary education	792	3%
ESP	English for specific purposes	692	3%
READING	Reading/literacy	691	3%
CALL	Technology in education	662	3%
SP	Speaking/pronunciation	659	3%
PROFDEV	Professional development	643	3%
ASSESS	Assessment/testing	614	2%
PA	Program administration	577	2%
SS	Secondary education	538	2%
BE	Bilingual education	520	2%
ISKILL	Integrated Skills	474	2%
COMMCOLL	Community college/technical ed	432	2%
WORKPLACE	Workplace English instruction/Business English	415	2%
DISTANCE	Distance learning/Online Education	392	2%
RS	Research	357	1%
LISTEN	Listening	347	1%
LIT	Literature	319	1%
VOCAB	Vocabulary/Lexicon	302	1%
SOCIAL	Social/global/political concerns	261	1%
VI	Video and digital media	206	1%
ITA	International teaching assistants	204	1%
ARTS	Arts/Media/Science/Math/Social Science	192	1%
FAMILY	Community/family outreach	186	1%
NNES	NNES/NES issues	174	1%
STANDARDS	Standards	169	1%
ACCRED	Accreditation	164	1%
LINGUISTICS	Theoretical Linguistics	148	1%
RC	Refugee concerns	147	1%
MAINSTREAMING	Mainstreaming	137	1%
LDSN	Learning Disorders/Special Needs	135	1%
EMPLOYMENT	Employment issues/Certification	104	0%
PUBLICPOLICY	Public policy	76	0%
STYLISTICS	Stylistics	30	0%

Sorted in order of prevalence.

** Note: Members are encouraged to choose multiple areas of expertise and some members do not choose any areas of expertise. The total number of distinct members (6,305) represented in this report is less than the total number of active members as indicated elsewhere in this report.*

Areas of Expertise are separate from official TESOL interest sections or Areas of Interest. Areas of expertise represent distinct areas in which a member may be experienced in, rather than official entities in which a member is involved.

Areas of interest which have a very low count may be recent additions to the AOI list, or may reflect overall trends in membership.