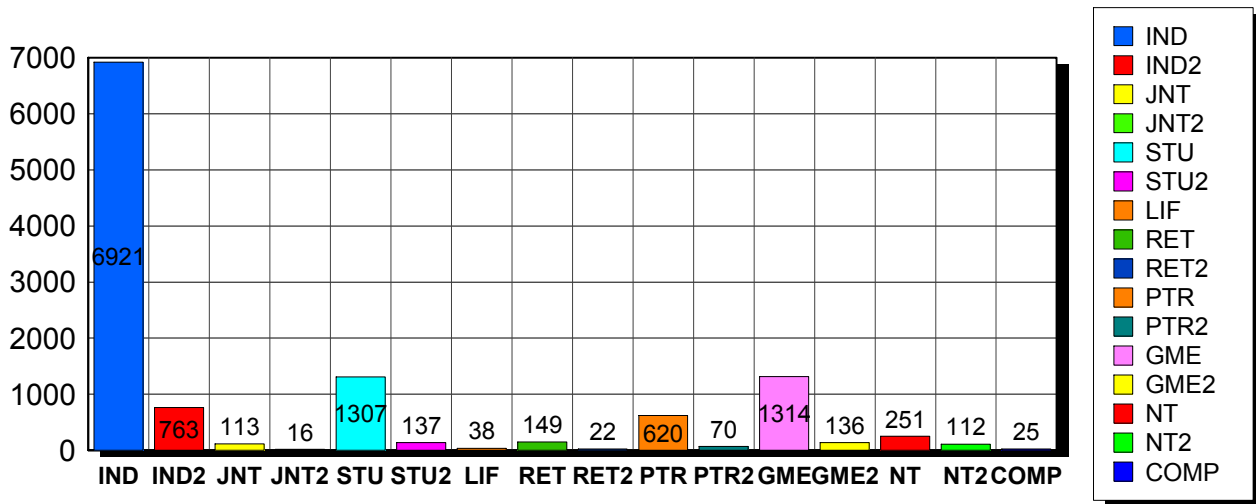


3/4/2010

### Membership Statistics: Grand totals for basic membership, by member type

		<u># Memberships</u>	<u># Members</u>
IND	BASIC	6,921	6,921
IND2	BASIC	763	763
JNT	BASIC	113	226
JNT2	BASIC	16	32
STU	BASIC	1,307	1,307
STU2	BASIC	137	137
LIF	BASIC	38	38
RET	BASIC	149	149
RET2	BASIC	22	22
PTR	BASIC	620	620
PTR2	BASIC	70	70
GME	BASIC	1,314	1,314
GME2	BASIC	136	136
NT	BASIC	251	251
NT2	BASIC	112	112
COMP	BASIC	25	25
<b>Grand Total:</b>		<b>11,994</b>	<b>12,123</b>

### Member Types



Note: in all general statistic reports, joint household memberships are treated as "one" member EXCEPT in the second column of this report, where joints are counted as two people, providing the most accurate count of the number of TESOL members.

This report is based on members paid through 2/28/2010 or later.

Country/State/Province	Total	
<b>AFGHANISTAN</b>	<b>1</b>	<b>0.0%</b>
<b>ALBANIA</b>	<b>5</b>	<b>0.0%</b>
<b>ALGERIA</b>	<b>19</b>	<b>0.2%</b>
<b>ANGOLA</b>	<b>2</b>	<b>0.0%</b>
<b>ARGENTINA</b>	<b>27</b>	<b>0.2%</b>
<b>ARMENIA</b>	<b>4</b>	<b>0.0%</b>
<b>AUSTRALIA</b>	<b>60</b>	<b>0.5%</b>
<b>AUSTRIA</b>	<b>4</b>	<b>0.0%</b>
<b>AZERBAIJAN</b>	<b>2</b>	<b>0.0%</b>
<b>BAHRAIN</b>	<b>11</b>	<b>0.1%</b>
<b>BANGLADESH</b>	<b>9</b>	<b>0.1%</b>
<b>BELARUS</b>	<b>2</b>	<b>0.0%</b>
<b>BELGIUM</b>	<b>1</b>	<b>0.0%</b>
<b>BOLIVIA</b>	<b>57</b>	<b>0.5%</b>
<b>BOSNIA AND HERZEGOVINA</b>	<b>1</b>	<b>0.0%</b>
<b>BRAZIL</b>	<b>97</b>	<b>0.8%</b>
<b>BRUNEI DARUSSALAM</b>	<b>1</b>	<b>0.0%</b>
<b>BULGARIA</b>	<b>1</b>	<b>0.0%</b>
<b>BURKINA FASO</b>	<b>4</b>	<b>0.0%</b>
<b>CAMBODIA</b>	<b>5</b>	<b>0.0%</b>
<b>CAMEROON</b>	<b>44</b>	<b>0.4%</b>
<b>Canada</b>	<b>1</b>	<b>0.0%</b>
<b>CANADA</b>		
<i>CANADA</i>	<i>2</i>	
<i>CANADA Alberta</i>	<i>46</i>	
<i>CANADA British Columbia</i>	<i>105</i>	
<i>CANADA Manitoba</i>	<i>18</i>	
<i>CANADA New Brunswick</i>	<i>20</i>	
<i>CANADA Newfoundland</i>	<i>4</i>	
<i>CANADA North Dakota</i>	<i>1</i>	
<i>CANADA Nova Scotia</i>	<i>10</i>	
<i>CANADA Nunavut</i>	<i>1</i>	
<i>CANADA Ontario</i>	<i>101</i>	
<i>CANADA Prince Edward Island</i>	<i>4</i>	
<i>CANADA Quebec</i>	<i>34</i>	
<i>CANADA Saskatchewan</i>	<i>6</i>	
<i>CANADA Yukon Territory</i>	<i>1</i>	
<b>CANADA</b>	<b>353</b>	<b>2.9%</b>
<b>CHILE</b>	<b>19</b>	<b>0.2%</b>
<b>CHINA</b>	<b>89</b>	<b>0.7%</b>
<b>COLOMBIA</b>	<b>32</b>	<b>0.3%</b>
<b>COSTA RICA</b>	<b>32</b>	<b>0.3%</b>
<b>CROATIA</b>	<b>2</b>	<b>0.0%</b>
<b>CYPRUS</b>	<b>4</b>	<b>0.0%</b>
<b>CZECH REPUBLIC</b>	<b>8</b>	<b>0.1%</b>
<b>DENMARK</b>	<b>2</b>	<b>0.0%</b>
<b>DOMINICAN REPUBLIC</b>	<b>14</b>	<b>0.1%</b>
<b>EAST TIMOR</b>	<b>1</b>	<b>0.0%</b>
<b>ECUADOR</b>	<b>33</b>	<b>0.3%</b>
<b>EGYPT</b>	<b>29</b>	<b>0.2%</b>
<b>EL SALVADOR</b>	<b>2</b>	<b>0.0%</b>
<b>ESTONIA</b>	<b>2</b>	<b>0.0%</b>
<b>FINLAND</b>	<b>7</b>	<b>0.1%</b>
<b>FRANCE</b>	<b>17</b>	<b>0.1%</b>
<b>GEORGIA</b>	<b>12</b>	<b>0.1%</b>
<b>GERMANY</b>	<b>21</b>	<b>0.2%</b>
<b>GREECE</b>	<b>20</b>	<b>0.2%</b>

GUAM	3	0.0%
GUATEMALA	21	0.2%
HAITI	15	0.1%
HONDURAS	5	0.0%
HONG KONG	11	0.1%
HONG KONG SAR CHINA	24	0.2%
HUNGARY	5	0.0%
ICELAND	3	0.0%
INDIA	26	0.2%
INDONESIA	45	0.4%
IRAN	5	0.0%
IRAO	16	0.1%
IRELAND	3	0.0%
ISRAEL	27	0.2%
ITALY	31	0.3%
JAPAN	445	3.7%
JORDAN	7	0.1%
KAZAKHSTAN	6	0.1%
KOREA, REPUBLIC OF	26	0.2%
KOSOVO (UNMIK)	1	0.0%
KUWAIT	18	0.2%
KYRGYZSTAN	2	0.0%
LAOS	10	0.1%
LATVIA	1	0.0%
LEBANON	7	0.1%
LIBYA	6	0.1%
LITHUANIA	4	0.0%
MACAO	11	0.1%
MACEDONIA	4	0.0%
MADAGASCAR	9	0.1%
MALAYSIA	16	0.1%
MALDIVES	1	0.0%
MALTA	1	0.0%
MARSHALL ISLANDS	5	0.0%
MAURITANIA	1	0.0%
MEXICO	179	1.5%
MOLDOVA, REPUBLIC OF	3	0.0%
MONGOLIA	7	0.1%
MOROCCO	29	0.2%
MOZAMBIQUE	1	0.0%
MYANMAR	3	0.0%
NEPAL	5	0.0%
NETHERLANDS	4	0.0%
NETHERLANDS ANTILLES	1	0.0%
NEW ZEALAND	14	0.1%
NICARAGUA	7	0.1%
NIGER	1	0.0%
NIGERIA	1	0.0%
OMAN	11	0.1%
PAKISTAN	13	0.1%
PALESTINIAN TERRITORY	1	0.0%
PANAMA	32	0.3%
PAPUA NEW GUINEA	1	0.0%
PARAGUAY	7	0.1%
PEOPLES REP OF CHINA	54	0.5%
PERU	87	0.7%
PHILIPPINES	50	0.4%
POLAND	11	0.1%
PORTUGAL	1	0.0%
OATAR	29	0.2%
ROMANIA	3	0.0%

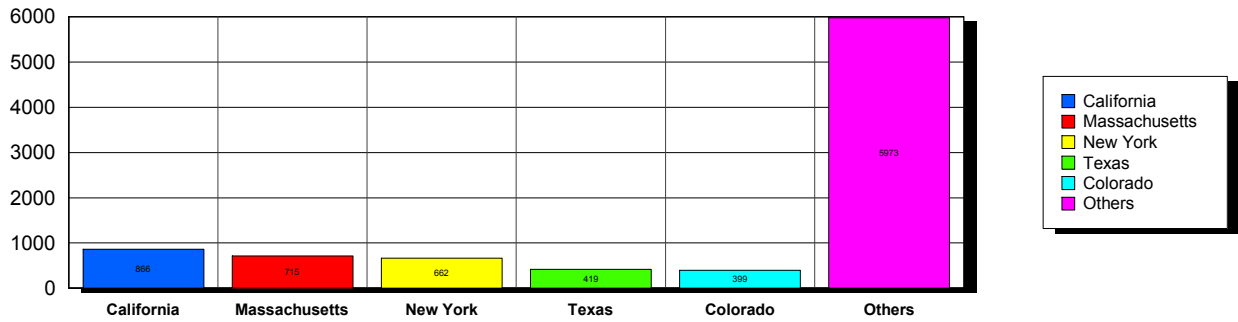
<b>RUSSIA</b>	<b>43</b>	<b>0.4%</b>
<b>RUSSIAN FEDERATION</b>	<b>7</b>	<b>0.1%</b>
<b>RWANDA</b>	<b>1</b>	<b>0.0%</b>
<b>SAUDI ARABIA</b>	<b>37</b>	<b>0.3%</b>
<b>SENEGAL</b>	<b>9</b>	<b>0.1%</b>
<b>SERBIA</b>	<b>5</b>	<b>0.0%</b>
<b>SIERRA LEONE</b>	<b>1</b>	<b>0.0%</b>
<b>SINGAPORE</b>	<b>18</b>	<b>0.2%</b>
<b>SLOVAKIA</b>	<b>4</b>	<b>0.0%</b>
<b>SOUTH AFRICA</b>	<b>7</b>	<b>0.1%</b>
<b>SOUTH KOREA</b>	<b>58</b>	<b>0.5%</b>
<b>SPAIN</b>	<b>14</b>	<b>0.1%</b>
<b>SRI LANKA</b>	<b>2</b>	<b>0.0%</b>
<b>SUDAN</b>	<b>6</b>	<b>0.1%</b>
<b>SWAZILAND</b>	<b>1</b>	<b>0.0%</b>
<b>SWEDEN</b>	<b>8</b>	<b>0.1%</b>
<b>SWITZERLAND</b>	<b>8</b>	<b>0.1%</b>
<b>SYRIAN ARAB REPUBLIC</b>	<b>3</b>	<b>0.0%</b>
<b>TAIWAN</b>	<b>25</b>	<b>0.2%</b>
<b>TAIWAN ROC</b>	<b>46</b>	<b>0.4%</b>
<b>TAIWAN, PROVINCE OF CHINA</b>	<b>2</b>	<b>0.0%</b>
<b>TAJIKISTAN</b>	<b>2</b>	<b>0.0%</b>
<b>THAILAND</b>	<b>39</b>	<b>0.3%</b>
<b>TRINIDAD AND TOBAGO</b>	<b>1</b>	<b>0.0%</b>
<b>TUNISIA</b>	<b>13</b>	<b>0.1%</b>
<b>TURKEY</b>	<b>53</b>	<b>0.4%</b>
<b>UGANDA</b>	<b>1</b>	<b>0.0%</b>
<b>UKRAINE</b>	<b>26</b>	<b>0.2%</b>
<b>UNITED ARAB EMIRATES</b>	<b>56</b>	<b>0.5%</b>
<b>UNITED KINGDOM</b>	<b>54</b>	<b>0.5%</b>
<b>UNITED STATES OF AMERICA</b>	<b>7</b>	<b>0.1%</b>
<b>URUGUAY</b>	<b>20</b>	<b>0.2%</b>
<b>US MINOR OUTLYING ISLANDS</b>	<b>1</b>	<b>0.0%</b>
<b>USA</b>		
USA	15	
USA	Alabama	49
USA	Alaska	22
USA	American Embassy	21
USA	Arizona	185
USA	Arkansas	81
USA	Armed Forces	8
USA	Armed Frces Americas	1
USA	British Columbia	1
USA	California	863
USA	Colorado	394
USA	Connecticut	173
USA	Delaware	28
USA	District of Columbia	127
USA	Florida	321
USA	Georgia	202
USA	Guam	2
USA	Hawaii	68
USA	Idaho	32
USA	Illinois	320
USA	Indiana	152
USA	Iowa	100
USA	Kansas	105
USA	Kentucky	71
USA	Lousiana	44
USA	Maine	57

USA	Manitoba	2	
USA	Maryland	290	
USA	Massachusetts	706	
USA	Michigan	209	
USA	Minnesota	185	
USA	Mississippi	50	
USA	Missouri	165	
USA	Montana	24	
USA	N Mariana Islands	1	
USA	Nebraska	48	
USA	Nevada	50	
USA	New Hampshire	102	
USA	New Jersey	263	
USA	New Mexico	53	
USA	New York	655	
USA	North Carolina	111	
USA	North Dakota	24	
USA	Ohio	204	
USA	Oklahoma	77	
USA	Ontario	1	
USA	Oregon	165	
USA	Pennsylvania	356	
USA	Puerto Rico	41	
USA	Rhode Island	99	
USA	South Carolina	48	
USA	South Dakota	11	
USA	Tennessee	91	
USA	Texas	421	
USA	Utah	116	
USA	Vermont	92	
USA	Virginia	344	
USA	Washington	270	
USA	West Virginia	29	
USA	Wisconsin	180	
USA	Wyoming	17	
<b>USA</b>		<b>8,942</b>	<b>74.5%</b>
<b>UZBEKISTAN</b>		<b>2</b>	<b>0.0%</b>
<b>VENEZUELA</b>		<b>12</b>	<b>0.1%</b>
<b>VIET NAM</b>		<b>6</b>	<b>0.1%</b>
<b>VIETNAM</b>		<b>14</b>	<b>0.1%</b>
<b>VIRGIN ISLANDS, U.S.</b>		<b>6</b>	<b>0.1%</b>
<b>YEMEN</b>		<b>4</b>	<b>0.0%</b>
<b>Grand Total:</b>		<b>11,997</b>	

143 distinct countries represented.

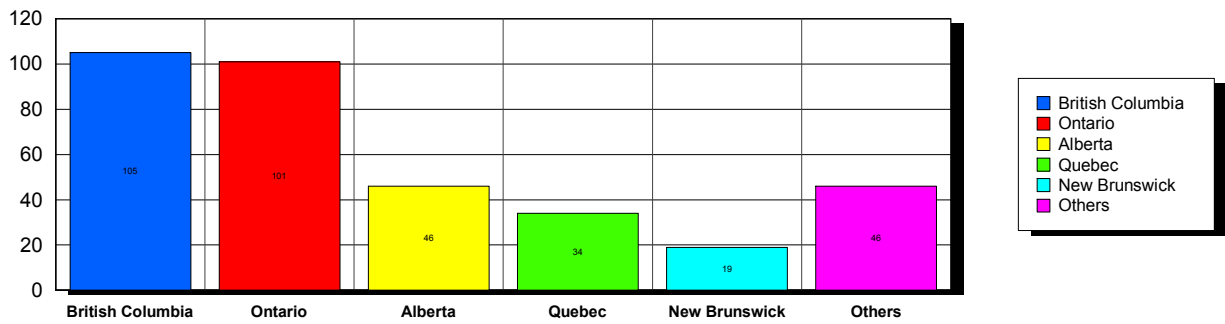
USA

Top 5 States per Country

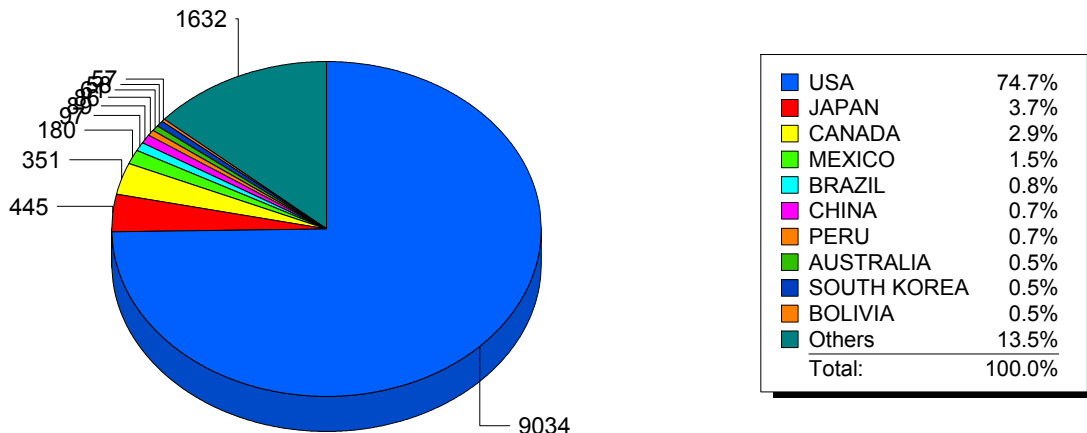


CANADA

Top 5 States per Country



Top 10 Countries



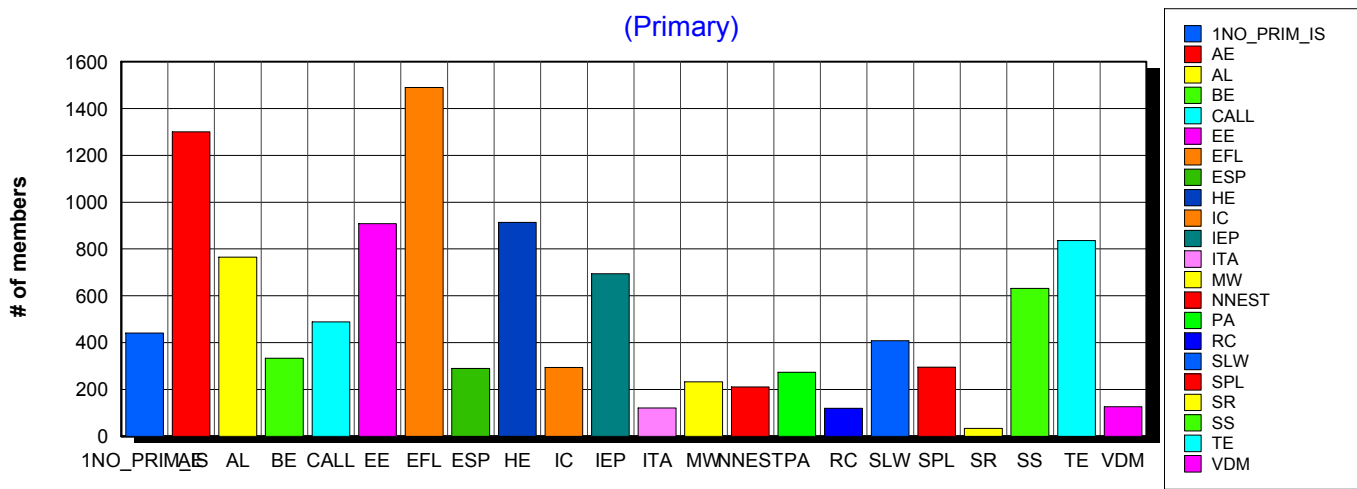
### Basic statistics on Primary vs. other memberships in interest sections. For members paid through 2/28/2010 or later.

			<i>Primary versus other</i>	
No Primary Interest Section	1.2%	443	441	2
Adult Education	7.4%	2,784	1,300	1,484
Applied Linguistics	6.1%	2,294	765	1,529
Bilingual Education	4.1%	1,526	333	1,193
Computer-Assisted Language Learning	5.3%	1,992	489	1,503
Elementary Education	4.9%	1,851	908	943
English as a Foreign Language	8.5%	3,189	1,490	1,699
English for Specific Purposes	4.4%	1,639	290	1,349
Higher Education	6.1%	2,310	914	1,396
Intercultural Communication	4.7%	1,783	294	1,489
Intensive English Programs	5.4%	2,044	694	1,350
International Teaching Assistants	2.7%	997	121	876
Materials Writers	3.4%	1,295	232	1,063
Nonnative English Speakers in TESOL	3.0%	1,130	210	920
Program Administration	3.3%	1,243	273	970
Refugee Concerns	2.3%	878	119	759
Second Language Writing	5.7%	2,145	408	1,737
Speech, Pronunciation, and Listening	5.0%	1,896	295	1,601
Social Responsibility	1.6%	599	34	565
Secondary Schools	4.1%	1,555	632	923
Teacher Education	7.2%	2,713	836	1,877
Video & Digital Media	3.5%	1,313	126	1,187
<i>11,212 distinct members</i>		<b>Total # of IS memberships</b>	<b>37,619</b>	<b>11,204</b>
			<b>26,415</b>	

The total count is the number of IS memberships total and may either be LESS or MORE than the actual number of individual members of TESOL. Due to open access to Interest Sections, these numbers may fluctuate considerably each month. For instance, one member may have selected four interest sections, while some members may belong to none.

### Interest Sections

(Primary)

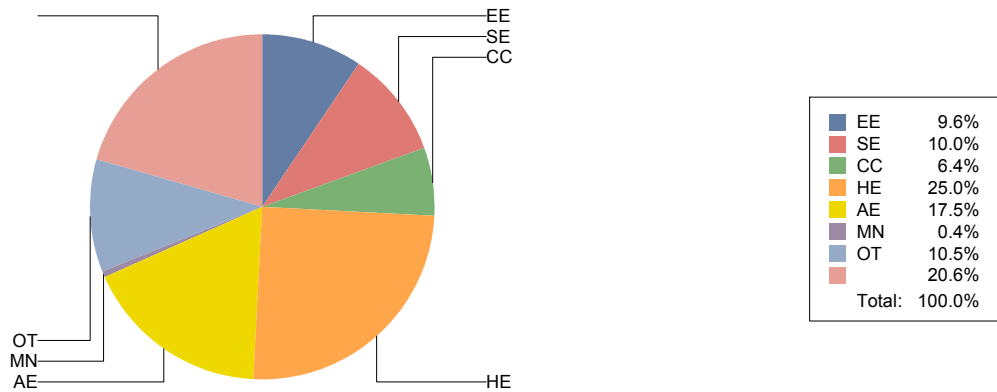


## Basic Statistics on Area of Work (Members paid through >= 2/28/2010)

Elementary Education	EE	1,138	9.6%
Secondary Education	SE	1,184	10.0%
Community/2yr College	CC	756	6.4%
Postsecondary Education	HE	2,972	25.0%
Adult Education	AE	2,075	17.5%
Mainstream	MN	50	0.4%
Other	OT	1,253	10.5%
		<b>2,450</b>	<b>20.6%</b>
		<b>11,878</b>	

Only members who selected an area of work are included on this report. Other members may not have responded to this question and are excluded from the count.

### Areas of Work



(Blanks indicate no response)



## Statistics on Areas of Interest (Members paid through >= 2/28/2010)

<u>CODE</u>	<u>DESCRIPTION</u>	<u>TOTAL*</u>	<u>% of TOTAL*</u>
EFL	English as a foreign language	2,942	5%
TE	Teacher education	2,676	4%
CURRICULUM	Materials development/Curriculum	2,647	4%
SLA	Second language acquisition	2,596	4%
AL	Applied linguistics	2,464	4%
IC	Multiculturalism/intercultural communications	2,463	4%
AE	Adult education	2,340	4%
CALL	Technology in education	2,235	4%
WRITING	Writing/composition	2,209	4%
CONTENT	Content-based instruction	2,147	4%
HE	Higher education	2,066	3%
PROFDEV	Professional development	1,982	3%
IEP	Intensive English programs	1,972	3%
READING	Reading/literacy	1,921	3%
SP	Speaking/pronunciation	1,864	3%
ASSESS	Assessment/testing	1,756	3%
GRAMMAR	Grammar	1,729	3%
ESP	English for specific purposes	1,674	3%
BE	Bilingual education	1,532	2%
RS	Research	1,502	2%
EE	Elementary/primary education	1,262	2%
PA	Program administration	1,220	2%
DISTANCE	Distance learning/Online Education	1,156	2%
VOCAB	Vocabulary/Lexicon	1,097	2%
SS	Secondary education	1,096	2%
SOCIAL	Social/global/political concerns	1,045	2%
WORKPLACE	Workplace English instruction/Business English	951	2%
VI	Video and digital media	948	2%
LISTEN	Listening	930	2%
ISKILL	Integrated Skills	929	2%
COMMCOLL	Community college/technical ed	818	1%
LIT	Literature	717	1%
RC	Refugee concerns	710	1%
LINGUISTICS	Theoretical Linguistics	705	1%
STANDARDS	Standards	689	1%
ITA	International teaching assistants	681	1%
FAMILY	Community/family outreach	600	1%
EMPLOYMENT	Employment issues/Certification	476	1%
LDSN	Learning Disorders/Special Needs	475	1%
PUBLICPOLICY	Public policy	451	1%
NNES	NNES/NES issues	434	1%
MAINSTREAMING	Mainstreaming	433	1%
ARTS	Arts/Media/Science/Math/Social Science	359	1%
ACCRED	Accreditation	295	0%
STYLISTICS	Stylistics	118	0%

Sorted in order of prevalence.

*\* Note: Members are encouraged to choose multiple areas of interest and some members do not choose any areas of interest. The total number of distinct members (8,491) represented in this report is less than the total number of active members as indicated elsewhere in this report.*

*Areas of interest are separate from official TESOL interest sections. Areas of interest represent distinct areas in which a member may be interested, rather than official entities in which a member is involved.*

*Areas of interest which have a very low count may be recent additions to the AOI list, or may reflect overall trends in membership.*

## Statistics on Areas of Expertise (Members paid through >= 2/28/2010)

<u>CODE</u>	<u>DESCRIPTION</u>	<u>TOTAL*</u>	<u>% of TOTAL*</u>
EFL	English as a foreign language	1,788	7%
AE	Adult education	1,436	6%
CURRICULUM	Materials development/Curriculum	1,235	5%
WRITING	Writing/composition	1,114	4%
AL	Applied linguistics	1,084	4%
TE	Teacher education	1,046	4%
SLA	Second language acquisition	1,038	4%
IEP	Intensive English programs	1,012	4%
HE	Higher education	955	4%
CONTENT	Content-based instruction	926	4%
GRAMMAR	Grammar	863	3%
IC	Multiculturalism/intercultural communications	810	3%
EE	Elementary/primary education	790	3%
READING	Reading/literacy	697	3%
CALL	Technology in education	677	3%
ESP	English for specific purposes	676	3%
SP	Speaking/pronunciation	653	3%
PROFDEV	Professional development	651	3%
ASSESS	Assessment/testing	610	2%
PA	Program administration	590	2%
SS	Secondary education	521	2%
BE	Bilingual education	507	2%
ISKILL	Integrated Skills	479	2%
COMMCOLL	Community college/technical ed	441	2%
WORKPLACE	Workplace English instruction/Business English	407	2%
DISTANCE	Distance learning/Online Education	390	2%
RS	Research	365	1%
LISTEN	Listening	347	1%
LIT	Literature	320	1%
VOCAB	Vocabulary/Lexicon	310	1%
SOCIAL	Social/global/political concerns	256	1%
VI	Video and digital media	211	1%
ITA	International teaching assistants	194	1%
ARTS	Arts/Media/Science/Math/Social Science	188	1%
NNES	NNES/NES issues	177	1%
FAMILY	Community/family outreach	173	1%
STANDARDS	Standards	165	1%
ACCRED	Accreditation	156	1%
LINGUISTICS	Theoretical Linguistics	154	1%
RC	Refugee concerns	146	1%
MAINSTREAMING	Mainstreaming	139	1%
LDSN	Learning Disorders/Special Needs	137	1%
EMPLOYMENT	Employment issues/Certification	107	0%
PUBLICPOLICY	Public policy	77	0%
STYLISTICS	Stylistics	29	0%

Sorted in order of prevalence.

*\* Note: Members are encouraged to choose multiple areas of expertise and some members do not choose any areas of expertise. The total number of distinct members (6,319) represented in this report is less than the total number of active members as indicated elsewhere in this report.*

*Areas of Expertise are separate from official TESOL interest sections or Areas of Interest. Areas of expertise represent distinct areas in which a member may be experienced in, rather than official entities in which a member is involved.*

*Areas of interest which have a very low count may be recent additions to the AOI list, or may reflect overall trends in membership.*