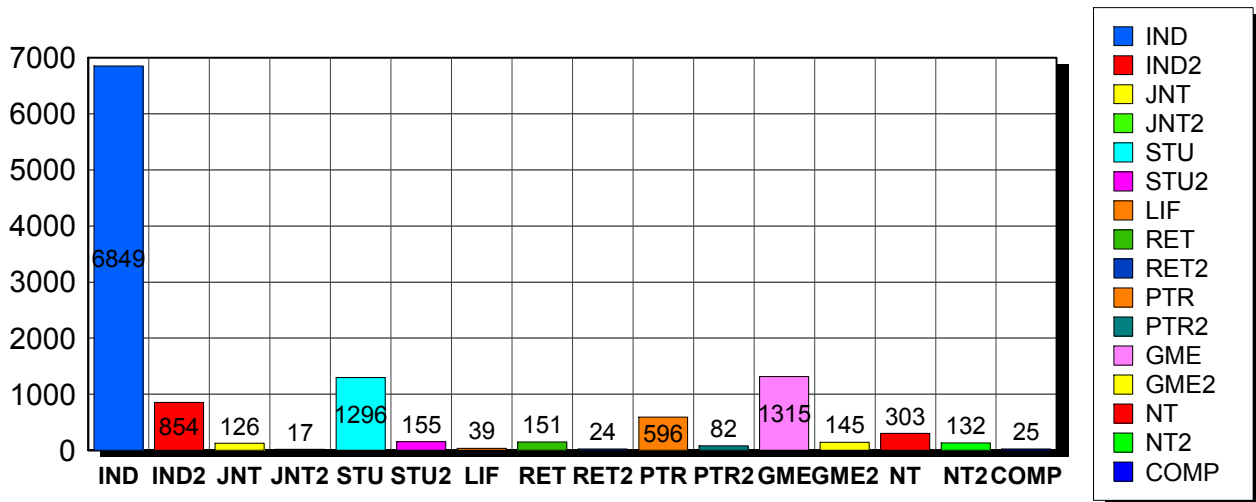


4/8/2010

Membership Statistics: Grand totals for basic membership, by member type

		<u># Memberships</u>	<u># Members</u>
IND	BASIC	6,849	6,849
IND2	BASIC	854	854
JNT	BASIC	126	252
JNT2	BASIC	17	34
STU	BASIC	1,296	1,296
STU2	BASIC	155	155
LIF	BASIC	39	39
RET	BASIC	151	151
RET2	BASIC	24	24
PTR	BASIC	596	596
PTR2	BASIC	82	82
GME	BASIC	1,315	1,315
GME2	BASIC	145	145
NT	BASIC	303	303
NT2	BASIC	132	132
COMP	BASIC	25	25
Grand Total:		12,109	12,252

Member Types



Note: in all general statistic reports, joint household memberships are treated as "one" member EXCEPT in the second column of this report, where joints are counted as two people, providing the most accurate count of the number of TESOL members.

This report is based on members paid through 3/31/2010 or later.

Country/State/Province	Total	
AFGHANISTAN	1	0.0%
ALBANIA	6	0.0%
ALGERIA	20	0.2%
ANGOLA	2	0.0%
ARGENTINA	28	0.2%
ARMENIA	4	0.0%
AUSTRALIA	64	0.5%
AUSTRIA	4	0.0%
AZERBAIJAN	2	0.0%
BAHRAIN	13	0.1%
BANGLADESH	9	0.1%
BELARUS	1	0.0%
BELGIUM	1	0.0%
BOLIVIA	57	0.5%
BOSNIA AND HERZEGOVINA	1	0.0%
BRAZIL	100	0.8%
BRUNEI DARUSSALAM	1	0.0%
BULGARIA	2	0.0%
BURKINA FASO	3	0.0%
CAMBODIA	5	0.0%
CAMEROON	44	0.4%
Canada	1	0.0%
CANADA		
<i>CANADA</i>	<i>2</i>	
<i>CANADA Alberta</i>	<i>47</i>	
<i>CANADA British Columbia</i>	<i>104</i>	
<i>CANADA Manitoba</i>	<i>21</i>	
<i>CANADA New Brunswick</i>	<i>21</i>	
<i>CANADA Newfoundland</i>	<i>4</i>	
<i>CANADA North Dakota</i>	<i>1</i>	
<i>CANADA Nova Scotia</i>	<i>9</i>	
<i>CANADA Nunavut</i>	<i>1</i>	
<i>CANADA Ontario</i>	<i>107</i>	
<i>CANADA Prince Edward Island</i>	<i>4</i>	
<i>CANADA Quebec</i>	<i>35</i>	
<i>CANADA Saskatchewan</i>	<i>8</i>	
CANADA	364	3.0%
CHILE	19	0.2%
CHINA	88	0.7%
COLOMBIA	33	0.3%
COSTA RICA	32	0.3%
COTE D'IVOIRE	1	0.0%
CROATIA	4	0.0%
CYPRUS	4	0.0%
CZECH REPUBLIC	8	0.1%
DENMARK	2	0.0%
DOMINICAN REPUBLIC	15	0.1%
EAST TIMOR	1	0.0%
ECUADOR	33	0.3%
EGYPT	24	0.2%
EL SALVADOR	4	0.0%
ESTONIA	1	0.0%
FINLAND	7	0.1%
FRANCE	18	0.1%
GEORGIA	9	0.1%
GERMANY	21	0.2%
GREECE	20	0.2%

GUAM	3	0.0%
GUATEMALA	20	0.2%
HAITI	15	0.1%
HONDURAS	9	0.1%
HONG KONG	11	0.1%
HONG KONG SAR CHINA	24	0.2%
HUNGARY	6	0.0%
ICELAND	3	0.0%
INDIA	27	0.2%
INDONESIA	30	0.2%
IRAN	5	0.0%
IRAO	24	0.2%
IRELAND	4	0.0%
ISRAEL	27	0.2%
ITALY	31	0.3%
JAPAN	457	3.8%
JORDAN	8	0.1%
KAZAKHSTAN	3	0.0%
KOREA, REPUBLIC OF	25	0.2%
KOSOVO (UNMIK)	2	0.0%
KUWAIT	22	0.2%
KYRGYZSTAN	2	0.0%
LAOS	11	0.1%
LATVIA	1	0.0%
LEBANON	8	0.1%
LIBYA	7	0.1%
LITHUANIA	4	0.0%
MACAO	10	0.1%
MACEDONIA	5	0.0%
MADAGASCAR	9	0.1%
MALAYSIA	17	0.1%
MALDIVES	1	0.0%
MALTA	1	0.0%
MARSHALL ISLANDS	5	0.0%
MAURITANIA	1	0.0%
MEXICO	170	1.4%
MOLDOVA, REPUBLIC OF	4	0.0%
MONGOLIA	9	0.1%
MONTENEGRO	1	0.0%
MOROCCO	38	0.3%
MOZAMBIQUE	1	0.0%
MYANMAR	2	0.0%
NEPAL	6	0.0%
NETHERLANDS	4	0.0%
NETHERLANDS ANTILLES	1	0.0%
NEW ZEALAND	14	0.1%
NICARAGUA	5	0.0%
NIGER	1	0.0%
OMAN	14	0.1%
PAKISTAN	13	0.1%
PALAU	2	0.0%
PALESTINIAN TERRITORY	1	0.0%
PANAMA	33	0.3%
PAPUA NEW GUINEA	1	0.0%
PARAGUAY	7	0.1%
PEOPLES REP OF CHINA	53	0.4%
PERU	85	0.7%
PHILIPPINES	57	0.5%
POLAND	11	0.1%
PORTUGAL	1	0.0%
OATAR	32	0.3%

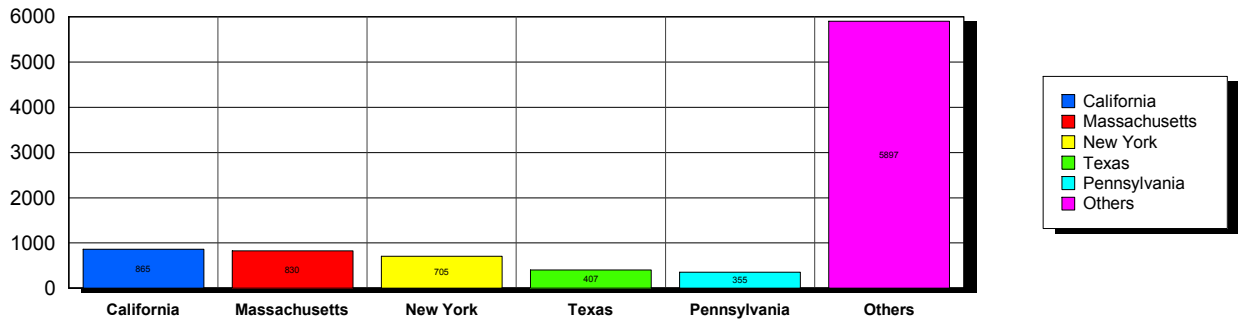
ROMANIA	3	0.0%
RUSSIA	37	0.3%
RUSSIAN FEDERATION	9	0.1%
RWANDA	2	0.0%
SAO TOME AND PRINCIPE	1	0.0%
SAUDI ARABIA	38	0.3%
SENEGAL	8	0.1%
SERBIA	3	0.0%
SIERRA LEONE	1	0.0%
SINGAPORE	18	0.1%
SLOVAKIA	3	0.0%
SOUTH AFRICA	7	0.1%
SOUTH KOREA	58	0.5%
SPAIN	14	0.1%
SRI LANKA	3	0.0%
SUDAN	4	0.0%
SWAZILAND	1	0.0%
SWEDEN	7	0.1%
SWITZERLAND	8	0.1%
SYRIAN ARAB REPUBLIC	4	0.0%
TAIWAN	24	0.2%
TAIWAN ROC	45	0.4%
TAIWAN, PROVINCE OF CHINA	2	0.0%
TAJIKISTAN	3	0.0%
THAILAND	35	0.3%
TOGO	1	0.0%
TRINIDAD AND TOBAGO	1	0.0%
TUNISIA	12	0.1%
TURKEY	51	0.4%
UGANDA	2	0.0%
UKRAINE	23	0.2%
UNITED ARAB EMIRATES	54	0.4%
UNITED KINGDOM	55	0.5%
UNITED STATES OF AMERICA	7	0.1%
URUGUAY	19	0.2%
US MINOR OUTLYING ISLANDS	4	0.0%
USA		
USA	21	
USA	Alabama	56
USA	Alaska	20
USA	American Embassy	21
USA	Arizona	181
USA	Arkansas	77
USA	Armed Forces	8
USA	Armed Frces Americas	1
USA	British Columbia	1
USA	California	866
USA	Canal Zone	1
USA	Colorado	232
USA	Connecticut	196
USA	Delaware	28
USA	District of Columbia	139
USA	Florida	330
USA	Georgia	205
USA	Guam	4
USA	Hawaii	68
USA	Idaho	31
USA	Illinois	312
USA	Indiana	153
USA	Iowa	105

USA	Kansas	99	
USA	Kentucky	67	
USA	Lousiana	47	
USA	Maine	62	
USA	Manitoba	2	
USA	Maryland	293	
USA	Massachusetts	824	
USA	Michigan	212	
USA	Minnesota	180	
USA	Mississippi	54	
USA	Missouri	160	
USA	Montana	21	
USA	N Mariana Islands	1	
USA	Nebraska	46	
USA	Nevada	52	
USA	New Hampshire	112	
USA	New Jersey	267	
USA	New Mexico	47	
USA	New York	699	
USA	North Carolina	121	
USA	North Dakota	22	
USA	Ohio	217	
USA	Oklahoma	74	
USA	Ontario	5	
USA	Oregon	169	
USA	Pennsylvania	350	
USA	Puerto Rico	48	
USA	Rhode Island	125	
USA	South Carolina	52	
USA	South Dakota	10	
USA	Tennessee	89	
USA	Texas	408	
USA	Utah	107	
USA	Vermont	100	
USA	Virginia	332	
USA	Washington	258	
USA	West Virgina	26	
USA	Wisconsin	186	
USA	Wyoming	17	
USA		9,017	74.5%
UZBEKISTAN		3	0.0%
VENEZUELA		12	0.1%
VIET NAM		5	0.0%
VIETNAM		15	0.1%
VIRGIN ISLANDS, U.S.		7	0.1%
YEMEN		2	0.0%
Grand Total:		12,109	

147 distinct countries represented.

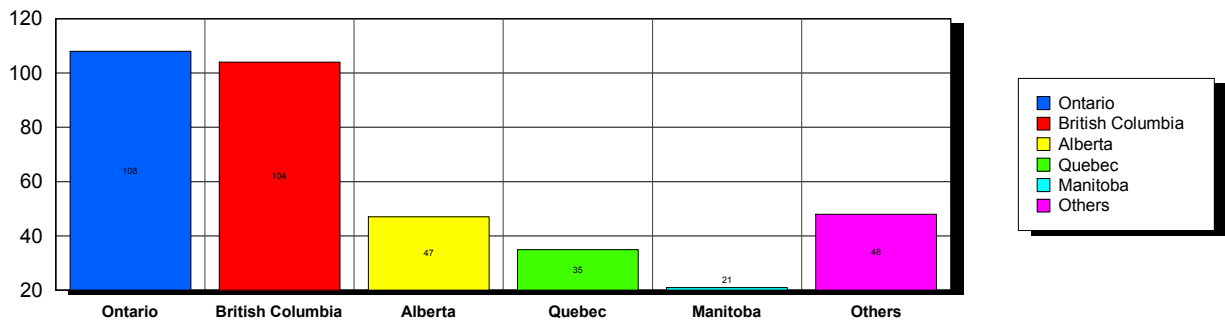
USA

Top 5 States per Country

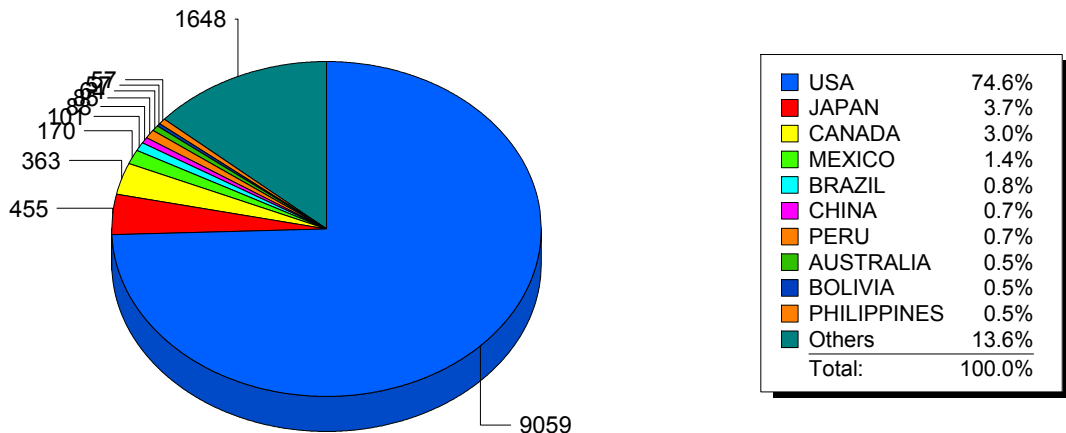


CANADA

Top 5 States per Country



Top 10 Countries



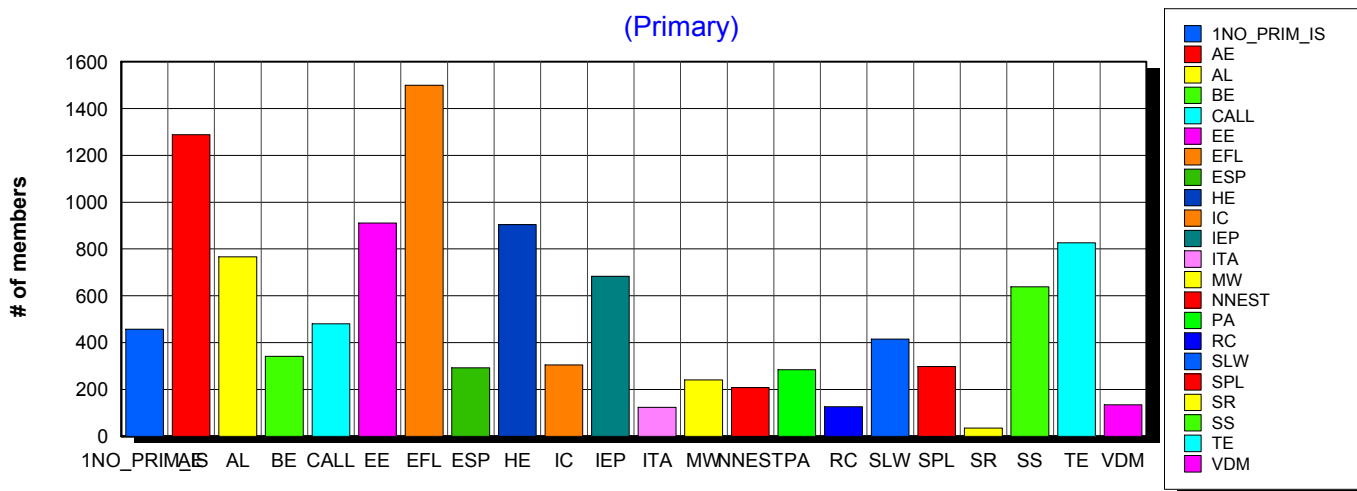
Basic statistics on Primary vs. other memberships in interest sections. For members paid through 3/31/2010 or later.

			<i>Primary versus other</i>	
No Primary Interest Section	1.2%	459	457	2
Adult Education	7.4%	2,810	1,288	1,522
Applied Linguistics	6.1%	2,332	767	1,565
Bilingual Education	4.0%	1,547	341	1,206
Computer-Assisted Language Learning	5.3%	2,038	481	1,557
Elementary Education	4.9%	1,860	911	949
English as a Foreign Language	8.4%	3,205	1,500	1,705
English for Specific Purposes	4.4%	1,672	292	1,380
Higher Education	6.1%	2,314	904	1,410
Intercultural Communication	4.7%	1,808	305	1,503
Intensive English Programs	5.3%	2,041	683	1,358
International Teaching Assistants	2.6%	1,004	123	881
Materials Writers	3.5%	1,334	241	1,093
Nonnative English Speakers in TESOL	3.0%	1,162	208	954
Program Administration	3.4%	1,289	284	1,005
Refugee Concerns	2.4%	912	126	786
Second Language Writing	5.7%	2,184	415	1,769
Speech, Pronunciation, and Listening	5.0%	1,919	298	1,621
Social Responsibility	1.7%	664	35	629
Secondary Schools	4.2%	1,588	639	949
Teacher Education	7.2%	2,734	827	1,907
Video & Digital Media	3.5%	1,339	134	1,205
<i>11,261 distinct members</i>		Total # of IS memberships	38,215	<i>11,259</i> <i>26,956</i>

The total count is the number of IS memberships total and may either be LESS or MORE than the actual number of individual members of TESOL. Due to open access to Interest Sections, these numbers may fluctuate considerably each month. For instance, one member may have selected four interest sections, while some members may belong to none.

Interest Sections

(Primary)

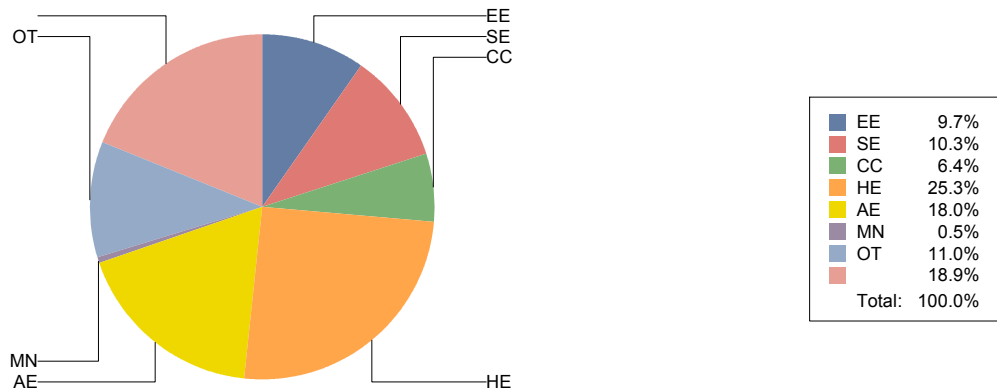


Basic Statistics on Area of Work (Members paid through >= 3/31/2010)

Elementary Education	EE	1,154	9.7%
Secondary Education	SE	1,221	10.3%
Community/2yr College	CC	761	6.4%
Postsecondary Education	HE	3,011	25.3%
Adult Education	AE	2,138	18.0%
Mainstream	MN	63	0.5%
Other	OT	1,305	11.0%
		2,243	18.9%
		11,896	

Only members who selected an area of work are included on this report. Other members may not have responded to this question and are excluded from the count.

Areas of Work



(Blanks indicate no response)

Statistics on Areas of Interest (Members paid through >= 3/31/2010)

<u>CODE</u>	<u>DESCRIPTION</u>	<u>TOTAL*</u>	<u>% of TOTAL*</u>
EFL	English as a foreign language	2,973	5%
TE	Teacher education	2,673	4%
CURRICULUM	Materials development/Curriculum	2,672	4%
SLA	Second language acquisition	2,609	4%
AL	Applied linguistics	2,481	4%
IC	Multiculturalism/intercultural communications	2,462	4%
AE	Adult education	2,368	4%
CALL	Technology in education	2,250	4%
WRITING	Writing/composition	2,232	4%
CONTENT	Content-based instruction	2,169	4%
HE	Higher education	2,092	3%
PROFDEV	Professional development	1,986	3%
IEP	Intensive English programs	1,963	3%
READING	Reading/literacy	1,934	3%
SP	Speaking/pronunciation	1,864	3%
ASSESS	Assessment/testing	1,775	3%
GRAMMAR	Grammar	1,735	3%
ESP	English for specific purposes	1,679	3%
BE	Bilingual education	1,563	3%
RS	Research	1,502	2%
EE	Elementary/primary education	1,268	2%
PA	Program administration	1,229	2%
DISTANCE	Distance learning/Online Education	1,175	2%
VOCAB	Vocabulary/Lexicon	1,110	2%
SS	Secondary education	1,102	2%
SOCIAL	Social/global/political concerns	1,044	2%
WORKPLACE	Workplace English instruction/Business English	955	2%
VI	Video and digital media	949	2%
ISKILL	Integrated Skills	922	1%
LISTEN	Listening	921	1%
COMMCOLL	Community college/technical ed	814	1%
LIT	Literature	727	1%
LINGUISTICS	Theoretical Linguistics	718	1%
RC	Refugee concerns	711	1%
ITA	International teaching assistants	701	1%
STANDARDS	Standards	697	1%
FAMILY	Community/family outreach	607	1%
EMPLOYMENT	Employment issues/Certification	495	1%
LDSN	Learning Disorders/Special Needs	481	1%
PUBLICPOLICY	Public policy	459	1%
MAINSTREAMING	Mainstreaming	442	1%
NNES	NNES/NES issues	439	1%
ARTS	Arts/Media/Science/Math/Social Science	360	1%
ACCRED	Accreditation	310	1%
STYLISTICS	Stylistics	120	0%

Sorted in order of prevalence.

** Note: Members are encouraged to choose multiple areas of interest and some members do not choose any areas of interest. The total number of distinct members (8,561) represented in this report is less than the total number of active members as indicated elsewhere in this report.*

Areas of interest are separate from official TESOL interest sections. Areas of interest represent distinct areas in which a member may be interested, rather than official entities in which a member is involved.

Areas of interest which have a very low count may be recent additions to the AOI list, or may reflect overall trends in membership.

Statistics on Areas of Expertise (Members paid through >= 3/31/2010)

<u>CODE</u>	<u>DESCRIPTION</u>	<u>TOTAL*</u>	<u>% of TOTAL*</u>
EFL	English as a foreign language	1,808	7%
AE	Adult education	1,464	6%
CURRICULUM	Materials development/Curriculum	1,240	5%
WRITING	Writing/composition	1,137	4%
AL	Applied linguistics	1,111	4%
TE	Teacher education	1,054	4%
SLA	Second language acquisition	1,045	4%
IEP	Intensive English programs	1,020	4%
HE	Higher education	961	4%
CONTENT	Content-based instruction	942	4%
GRAMMAR	Grammar	867	3%
IC	Multiculturalism/intercultural communications	821	3%
EE	Elementary/primary education	785	3%
READING	Reading/literacy	711	3%
CALL	Technology in education	687	3%
ESP	English for specific purposes	684	3%
PROFDEV	Professional development	671	3%
SP	Speaking/pronunciation	653	3%
ASSESS	Assessment/testing	621	2%
PA	Program administration	598	2%
BE	Bilingual education	529	2%
SS	Secondary education	527	2%
ISKILL	Integrated Skills	476	2%
COMMCOLL	Community college/technical ed	445	2%
WORKPLACE	Workplace English instruction/Business English	410	2%
DISTANCE	Distance learning/Online Education	394	2%
RS	Research	368	1%
LISTEN	Listening	345	1%
LIT	Literature	335	1%
VOCAB	Vocabulary/Lexicon	313	1%
SOCIAL	Social/global/political concerns	259	1%
VI	Video and digital media	216	1%
ITA	International teaching assistants	202	1%
ARTS	Arts/Media/Science/Math/Social Science	190	1%
NNES	NNES/NES issues	184	1%
FAMILY	Community/family outreach	171	1%
STANDARDS	Standards	162	1%
ACCRED	Accreditation	157	1%
LINGUISTICS	Theoretical Linguistics	154	1%
RC	Refugee concerns	148	1%
MAINSTREAMING	Mainstreaming	144	1%
LDSN	Learning Disorders/Special Needs	141	1%
EMPLOYMENT	Employment issues/Certification	108	0%
PUBLICPOLICY	Public policy	80	0%
STYLISTICS	Stylistics	30	0%

Sorted in order of prevalence.

** Note: Members are encouraged to choose multiple areas of expertise and some members do not choose any areas of expertise. The total number of distinct members (6,385) represented in this report is less than the total number of active members as indicated elsewhere in this report.*

Areas of Expertise are separate from official TESOL interest sections or Areas of Interest. Areas of expertise represent distinct areas in which a member may be experienced in, rather than official entities in which a member is involved.

Areas of interest which have a very low count may be recent additions to the AOI list, or may reflect overall trends in membership.