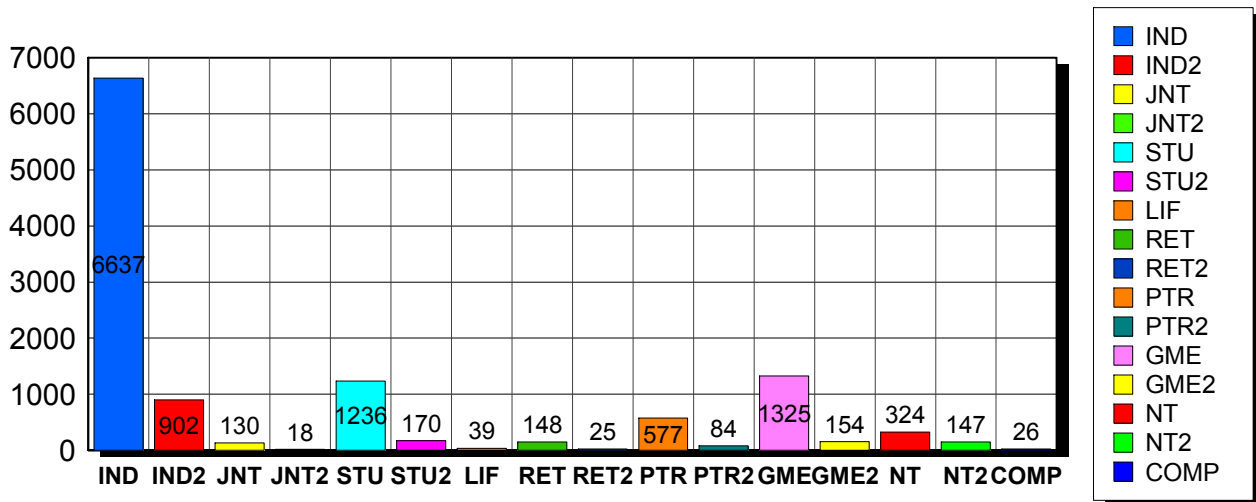


5/14/2010

### Membership Statistics: Grand totals for basic membership, by member type

		<u># Memberships</u>	<u># Members</u>
IND	BASIC	6,637	6,637
IND2	BASIC	902	902
JNT	BASIC	130	260
JNT2	BASIC	18	36
STU	BASIC	1,236	1,236
STU2	BASIC	170	170
LIF	BASIC	39	39
RET	BASIC	148	148
RET2	BASIC	25	25
PTR	BASIC	577	577
PTR2	BASIC	84	84
GME	BASIC	1,325	1,325
GME2	BASIC	154	154
NT	BASIC	324	324
NT2	BASIC	147	147
COMP	BASIC	26	26
<b>Grand Total:</b>		<b>11,942</b>	<b>12,090</b>

### Member Types



Note: in all general statistic reports, joint household memberships are treated as "one" member EXCEPT in the second column of this report, where joints are counted as two people, providing the most accurate count of the number of TESOL members.

This report is based on members paid through 4/30/2010 or later.

Country/State/Province	Total	
<b>AFGHANISTAN</b>	<b>1</b>	0.0%
<b>ALBANIA</b>	<b>7</b>	0.1%
<b>ALGERIA</b>	<b>21</b>	0.2%
<b>ANGOLA</b>	<b>2</b>	0.0%
<b>ARGENTINA</b>	<b>30</b>	0.3%
<b>ARMENIA</b>	<b>4</b>	0.0%
<b>AUSTRALIA</b>	<b>66</b>	0.6%
<b>AUSTRIA</b>	<b>4</b>	0.0%
<b>AZERBAIJAN</b>	<b>2</b>	0.0%
<b>BAHRAIN</b>	<b>12</b>	0.1%
<b>BANGLADESH</b>	<b>9</b>	0.1%
<b>BELARUS</b>	<b>1</b>	0.0%
<b>BELGIUM</b>	<b>1</b>	0.0%
<b>BOLIVIA</b>	<b>57</b>	0.5%
<b>BOSNIA AND HERZEGOVINA</b>	<b>1</b>	0.0%
<b>BRAZIL</b>	<b>104</b>	0.9%
<b>BRUNEI DARUSSALAM</b>	<b>1</b>	0.0%
<b>BULGARIA</b>	<b>1</b>	0.0%
<b>BURKINA FASO</b>	<b>3</b>	0.0%
<b>CAMBODIA</b>	<b>5</b>	0.0%
<b>CAMEROON</b>	<b>44</b>	0.4%
<b>Canada</b>	<b>1</b>	0.0%
<b>CANADA</b>		
<i>CANADA</i>	<i>2</i>	
<i>CANADA Alberta</i>	<i>45</i>	
<i>CANADA British Columbia</i>	<i>97</i>	
<i>CANADA Manitoba</i>	<i>20</i>	
<i>CANADA New Brunswick</i>	<i>21</i>	
<i>CANADA Newfoundland</i>	<i>4</i>	
<i>CANADA North Dakota</i>	<i>1</i>	
<i>CANADA Nova Scotia</i>	<i>11</i>	
<i>CANADA Nunavut</i>	<i>1</i>	
<i>CANADA Ontario</i>	<i>106</i>	
<i>CANADA Prince Edward Island</i>	<i>4</i>	
<i>CANADA Quebec</i>	<i>33</i>	
<i>CANADA Saskatchewan</i>	<i>8</i>	
<b>CANADA</b>	<b>353</b>	3.0%
<b>CAPE VERDE</b>	<b>1</b>	0.0%
<b>CAYMAN ISLANDS</b>	<b>1</b>	0.0%
<b>CHILE</b>	<b>19</b>	0.2%
<b>CHINA</b>	<b>88</b>	0.7%
<b>COLOMBIA</b>	<b>33</b>	0.3%
<b>COSTA RICA</b>	<b>30</b>	0.3%
<b>COTE D'IVOIRE</b>	<b>1</b>	0.0%
<b>CROATIA</b>	<b>4</b>	0.0%
<b>CYPRUS</b>	<b>4</b>	0.0%
<b>CZECH REPUBLIC</b>	<b>8</b>	0.1%
<b>DENMARK</b>	<b>2</b>	0.0%
<b>DOMINICAN REPUBLIC</b>	<b>15</b>	0.1%
<b>EAST TIMOR</b>	<b>1</b>	0.0%
<b>ECUADOR</b>	<b>33</b>	0.3%
<b>EGYPT</b>	<b>20</b>	0.2%
<b>EL SALVADOR</b>	<b>5</b>	0.0%
<b>ESTONIA</b>	<b>1</b>	0.0%
<b>FINLAND</b>	<b>7</b>	0.1%
<b>FRANCE</b>	<b>16</b>	0.1%
<b>GEORGIA</b>	<b>6</b>	0.1%

GERMANY	22	0.2%
GREECE	19	0.2%
GUAM	3	0.0%
GUATEMALA	20	0.2%
HAITI	13	0.1%
HONDURAS	10	0.1%
HONG KONG	11	0.1%
HONG KONG SAR CHINA	23	0.2%
HUNGARY	6	0.1%
ICELAND	3	0.0%
INDIA	28	0.2%
INDONESIA	32	0.3%
IRAN	5	0.0%
IRAQ	18	0.2%
IRELAND	4	0.0%
ISRAEL	25	0.2%
ITALY	30	0.3%
JAPAN	444	3.7%
JORDAN	7	0.1%
KAZAKHSTAN	3	0.0%
KOREA, REPUBLIC OF	23	0.2%
KOSOVO (UNMIK)	2	0.0%
KUWAIT	19	0.2%
KYRGYZSTAN	2	0.0%
LAOS	11	0.1%
LATVIA	1	0.0%
LEBANON	9	0.1%
LIBYA	7	0.1%
LITHUANIA	4	0.0%
MACAO	9	0.1%
MACEDONIA	5	0.0%
MADAGASCAR	9	0.1%
MALAYSIA	24	0.2%
MALDIVES	1	0.0%
MALTA	1	0.0%
MARSHALL ISLANDS	5	0.0%
MEXICO	156	1.3%
MOLDOVA, REPUBLIC OF	4	0.0%
MONGOLIA	9	0.1%
MONTENEGRO	1	0.0%
MOROCCO	37	0.3%
MOZAMBIQUE	1	0.0%
MYANMAR	2	0.0%
NEPAL	6	0.1%
NETHERLANDS	5	0.0%
NETHERLANDS ANTILLES	1	0.0%
NEW ZEALAND	14	0.1%
NICARAGUA	5	0.0%
NIGER	1	0.0%
NORWAY	1	0.0%
OMAN	14	0.1%
PAKISTAN	9	0.1%
PALAU	2	0.0%
PANAMA	37	0.3%
PARAGUAY	7	0.1%
PEOPLES REP OF CHINA	50	0.4%
PERU	87	0.7%
PHILIPPINES	60	0.5%
POLAND	12	0.1%
PORTUGAL	1	0.0%
QATAR	30	0.3%

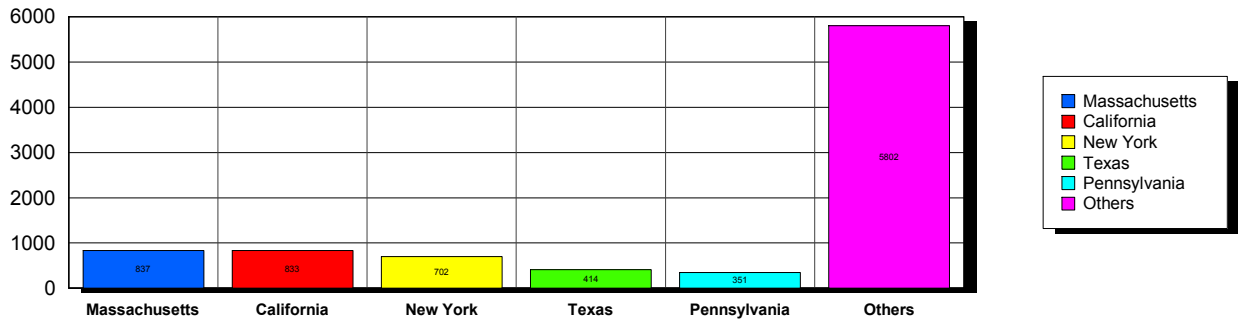
<b>ROMANIA</b>	<b>2</b>	<b>0.0%</b>
<b>RUSSIA</b>	<b>37</b>	<b>0.3%</b>
<b>RUSSIAN FEDERATION</b>	<b>9</b>	<b>0.1%</b>
<b>RWANDA</b>	<b>2</b>	<b>0.0%</b>
<b>SAO TOME AND PRINCIPE</b>	<b>1</b>	<b>0.0%</b>
<b>SAUDI ARABIA</b>	<b>38</b>	<b>0.3%</b>
<b>SENEGAL</b>	<b>8</b>	<b>0.1%</b>
<b>SERBIA</b>	<b>2</b>	<b>0.0%</b>
<b>SIERRA LEONE</b>	<b>1</b>	<b>0.0%</b>
<b>SINGAPORE</b>	<b>18</b>	<b>0.2%</b>
<b>SLOVAKIA</b>	<b>3</b>	<b>0.0%</b>
<b>SOUTH AFRICA</b>	<b>7</b>	<b>0.1%</b>
<b>SOUTH KOREA</b>	<b>56</b>	<b>0.5%</b>
<b>SPAIN</b>	<b>14</b>	<b>0.1%</b>
<b>SRI LANKA</b>	<b>3</b>	<b>0.0%</b>
<b>SUDAN</b>	<b>4</b>	<b>0.0%</b>
<b>SWAZILAND</b>	<b>1</b>	<b>0.0%</b>
<b>SWEDEN</b>	<b>6</b>	<b>0.1%</b>
<b>SWITZERLAND</b>	<b>9</b>	<b>0.1%</b>
<b>SYRIAN ARAB REPUBLIC</b>	<b>4</b>	<b>0.0%</b>
<b>TAIWAN</b>	<b>26</b>	<b>0.2%</b>
<b>TAIWAN ROC</b>	<b>45</b>	<b>0.4%</b>
<b>TAIWAN, PROVINCE OF CHINA</b>	<b>2</b>	<b>0.0%</b>
<b>TAJIKISTAN</b>	<b>3</b>	<b>0.0%</b>
<b>THAILAND</b>	<b>34</b>	<b>0.3%</b>
<b>TOGO</b>	<b>1</b>	<b>0.0%</b>
<b>TRINIDAD AND TOBAGO</b>	<b>1</b>	<b>0.0%</b>
<b>TUNISIA</b>	<b>12</b>	<b>0.1%</b>
<b>TURKEY</b>	<b>50</b>	<b>0.4%</b>
<b>UGANDA</b>	<b>2</b>	<b>0.0%</b>
<b>UKRAINE</b>	<b>20</b>	<b>0.2%</b>
<b>UNITED ARAB EMIRATES</b>	<b>54</b>	<b>0.5%</b>
<b>UNITED KINGDOM</b>	<b>52</b>	<b>0.4%</b>
<b>URUGUAY</b>	<b>20</b>	<b>0.2%</b>
<b>US MINOR OUTLYING ISLANDS</b>	<b>4</b>	<b>0.0%</b>
<b>USA</b>		
USA	35	
USA	Alabama	56
USA	Alaska	23
USA	American Embassy	20
USA	Arizona	176
USA	Arkansas	72
USA	Armed Forces	9
USA	British Columbia	1
USA	California	837
USA	Canal Zone	1
USA	Colorado	183
USA	Connecticut	194
USA	Delaware	28
USA	District of Columbia	142
USA	Florida	318
USA	Georgia	206
USA	Guam	5
USA	Hawaii	70
USA	Idaho	29
USA	Illinois	307
USA	Indiana	154
USA	Iowa	106
USA	Kansas	96
USA	Kentucky	64

USA	Louisiana	45	
USA	Maine	61	
USA	Manitoba	2	
USA	Marshall Islands	1	
USA	Maryland	299	
USA	Massachusetts	832	
USA	Michigan	214	
USA	Minnesota	178	
USA	Mississippi	52	
USA	Missouri	150	
USA	Montana	13	
USA	N Mariana Islands	1	
USA	Nebraska	44	
USA	Nevada	48	
USA	New Hampshire	113	
USA	New Jersey	268	
USA	New Mexico	46	
USA	New York	697	
USA	North Carolina	124	
USA	North Dakota	22	
USA	Ohio	212	
USA	Oklahoma	74	
USA	Ontario	5	
USA	Oregon	168	
USA	Pennsylvania	349	
USA	Puerto Rico	47	
USA	Rhode Island	124	
USA	South Carolina	50	
USA	South Dakota	10	
USA	Tennessee	90	
USA	Texas	412	
USA	Utah	106	
USA	Vermont	100	
USA	Virginia	343	
USA	Washington	259	
USA	West Virginia	24	
USA	Wisconsin	185	
USA	Wyoming	17	
<b>USA</b>		<b>8,917</b>	<b>74.7%</b>
<b>UZBEKISTAN</b>		<b>2</b>	<b>0.0%</b>
<b>VENEZUELA</b>		<b>11</b>	<b>0.1%</b>
<b>VIET NAM</b>		<b>4</b>	<b>0.0%</b>
<b>VIETNAM</b>		<b>14</b>	<b>0.1%</b>
<b>VIRGIN ISLANDS, U.S.</b>		<b>7</b>	<b>0.1%</b>
<b>YEMEN</b>		<b>2</b>	<b>0.0%</b>
<b>Grand Total:</b>		<b>11,943</b>	

146 distinct countries represented.

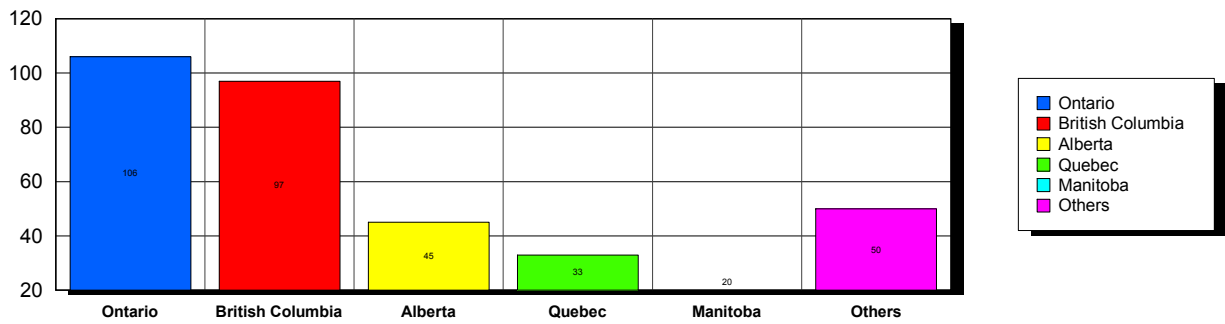
USA

Top 5 States per Country

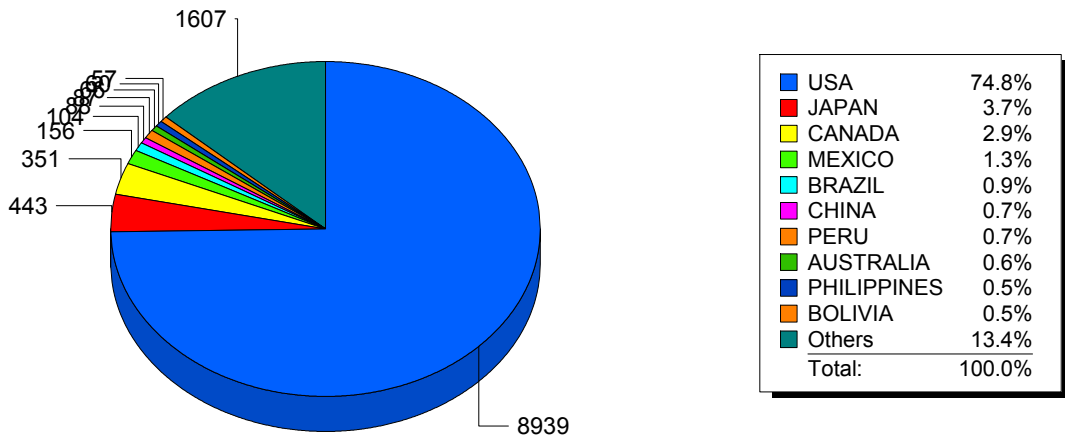


CANADA

Top 5 States per Country



Top 10 Countries



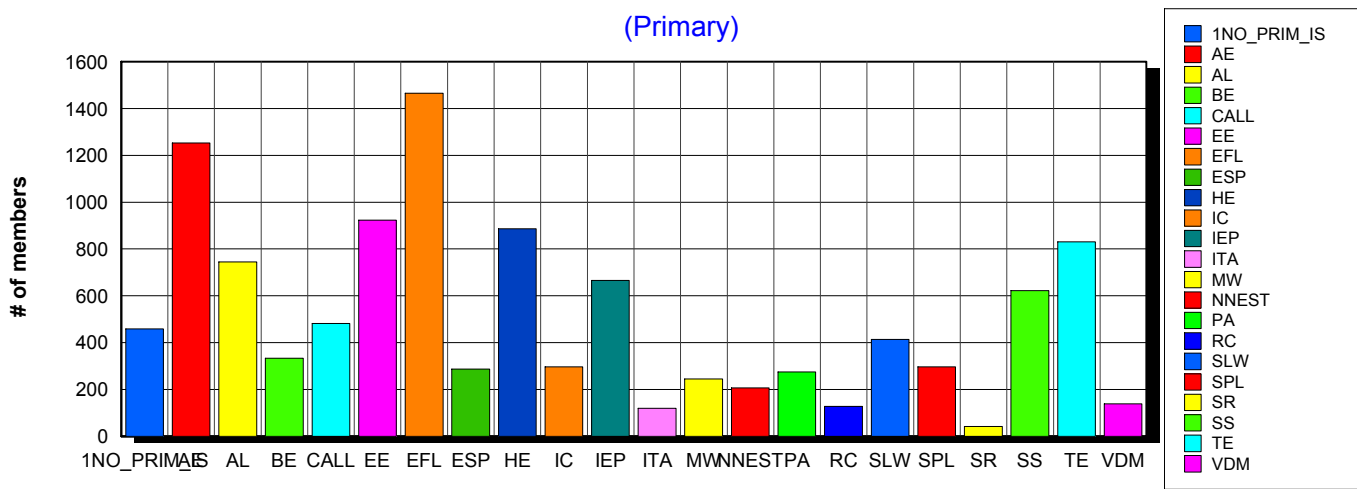
5/14/2010 **Basic statistics on Primary vs. other memberships in interest sections. For members paid through 4/30/2010 or later.**

			<i>Primary versus other</i>	
No Primary Interest Section	1.2%	<b>463</b>	458	5
Adult Education	7.3%	<b>2,774</b>	1,253	1,521
Applied Linguistics	6.0%	<b>2,307</b>	745	1,562
Bilingual Education	4.0%	<b>1,537</b>	333	1,204
Computer-Assisted Language Learning	5.4%	<b>2,048</b>	482	1,566
Elementary Education	4.9%	<b>1,881</b>	923	958
English as a Foreign Language	8.3%	<b>3,157</b>	1,466	1,691
English for Specific Purposes	4.4%	<b>1,679</b>	287	1,392
Higher Education	6.1%	<b>2,316</b>	887	1,429
Intercultural Communication	4.7%	<b>1,803</b>	296	1,507
Intensive English Programs	5.3%	<b>2,037</b>	665	1,372
International Teaching Assistants	2.6%	<b>1,010</b>	119	891
Materials Writers	3.5%	<b>1,344</b>	245	1,099
Nonnative English Speakers in TESOL	3.1%	<b>1,180</b>	207	973
Program Administration	3.4%	<b>1,296</b>	274	1,022
Refugee Concerns	2.4%	<b>910</b>	127	783
Second Language Writing	5.7%	<b>2,183</b>	413	1,770
Speech, Pronunciation, and Listening	5.0%	<b>1,924</b>	296	1,628
Social Responsibility	1.8%	<b>699</b>	41	658
Secondary Schools	4.1%	<b>1,584</b>	622	962
Teacher Education	7.2%	<b>2,754</b>	830	1,924
Video & Digital Media	3.5%	<b>1,356</b>	139	1,217
<i>11,141 distinct members</i>		<b>Total # of IS memberships</b>	<b>38,242</b>	<i>11,108</i> <i>27,134</i>

The total count is the number of IS memberships total and may either be LESS or MORE than the actual number of individual members of TESOL. Due to open access to Interest Sections, these numbers may fluctuate considerably each month. For instance, one member may have selected four interest sections, while some members may belong to none.

### Interest Sections

(Primary)

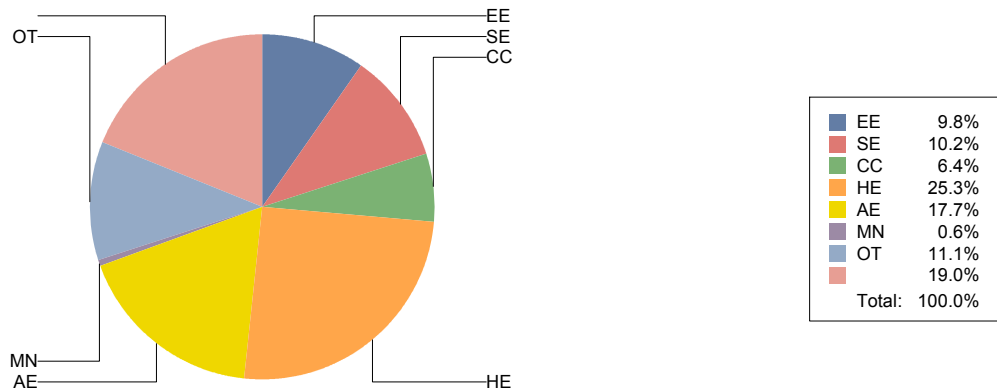


## Basic Statistics on Area of Work (Members paid through >= 4/30/2010)

Elementary Education	EE	1,159	9.8%
Secondary Education	SE	1,206	10.2%
Community/2yr College	CC	760	6.4%
Postsecondary Education	HE	3,008	25.3%
Adult Education	AE	2,108	17.7%
Mainstream	MN	69	0.6%
Other	OT	1,315	11.1%
		<b>2,256</b>	<b>19.0%</b>
		<b>11,881</b>	

Only members who selected an area of work are included on this report. Other members may not have responded to this question and are excluded from the count.

### Areas of Work



(Blanks indicate no response)



## Statistics on Areas of Interest (Members paid through >= 4/30/2010)

<u>CODE</u>	<u>DESCRIPTION</u>	<u>TOTAL*</u>	<u>% of TOTAL*</u>
TE	Teacher education	1,065	5%
CURRICULUM	Materials development/Curriculum	949	4%
IC	Multiculturalism/intercultural communications	923	4%
EFL	English as a foreign language	918	4%
SLA	Second language acquisition	843	4%
AL	Applied linguistics	840	4%
HE	Higher education	799	4%
CALL	Technology in education	796	4%
WRITING	Writing/composition	762	4%
PROFDEV	Professional development	750	4%
CONTENT	Content-based instruction	739	3%
AE	Adult education	687	3%
IEP	Intensive English programs	685	3%
READING	Reading/literacy	659	3%
ASSESS	Assessment/testing	653	3%
SP	Speaking/pronunciation	646	3%
GRAMMAR	Grammar	614	3%
RS	Research	601	3%
ESP	English for specific purposes	564	3%
BE	Bilingual education	524	2%
PA	Program administration	477	2%
DISTANCE	Distance learning/Online Education	419	2%
SOCIAL	Social/global/political concerns	377	2%
EE	Elementary/primary education	358	2%
SS	Secondary education	350	2%
VOCAB	Vocabulary/Lexicon	327	2%
VI	Video and digital media	325	2%
WORKPLACE	Workplace English instruction/Business English	324	2%
ISKILL	Integrated Skills	306	1%
LISTEN	Listening	291	1%
LINGUISTICS	Theoretical Linguistics	289	1%
STANDARDS	Standards	269	1%
COMMCOLL	Community college/technical ed	267	1%
ITA	International teaching assistants	251	1%
RC	Refugee concerns	239	1%
LIT	Literature	192	1%
NNES	NNES/NES issues	169	1%
PUBLICPOLICY	Public policy	169	1%
FAMILY	Community/family outreach	160	1%
MAINSTREAMING	Mainstreaming	148	1%
EMPLOYMENT	Employment issues/Certification	147	1%
LDSN	Learning Disorders/Special Needs	122	1%
ACCRED	Accreditation	103	0%
ARTS	Arts/Media/Science/Math/Social Science	76	0%
STYLISTICS	Stylistics	38	0%

Sorted in order of prevalence.

*\* Note: Members are encouraged to choose multiple areas of interest and some members do not choose any areas of interest. The total number of distinct members (2,326) represented in this report is less than the total number of active members as indicated elsewhere in this report.*

*Areas of interest are separate from official TESOL interest sections. Areas of interest represent distinct areas in which a member may be interested, rather than official entities in which a member is involved.*

*Areas of interest which have a very low count may be recent additions to the AOI list, or may reflect overall trends in membership.*

## Statistics on Areas of Expertise (Members paid through >= 4/30/2010)

<u>CODE</u>	<u>DESCRIPTION</u>	<u>TOTAL*</u>	<u>% of TOTAL*</u>
-------------	--------------------	---------------	--------------------

---

Sorted in order of prevalence.

*\* Note: Members are encouraged to choose multiple areas of expertise and some members do not choose any areas of expertise. The total number of distinct members () represented in this report is less than the total number of active members as indicated elsewhere in this report.*

*Areas of Expertise are separate from official TESOL interest sections or Areas of Interest. Areas of expertise represent distinct areas in which a member may be experienced in, rather than official entities in which a member is involved.*

*Areas of interest which have a very low count may be recent additions to the AOI list, or may reflect overall trends in membership.*