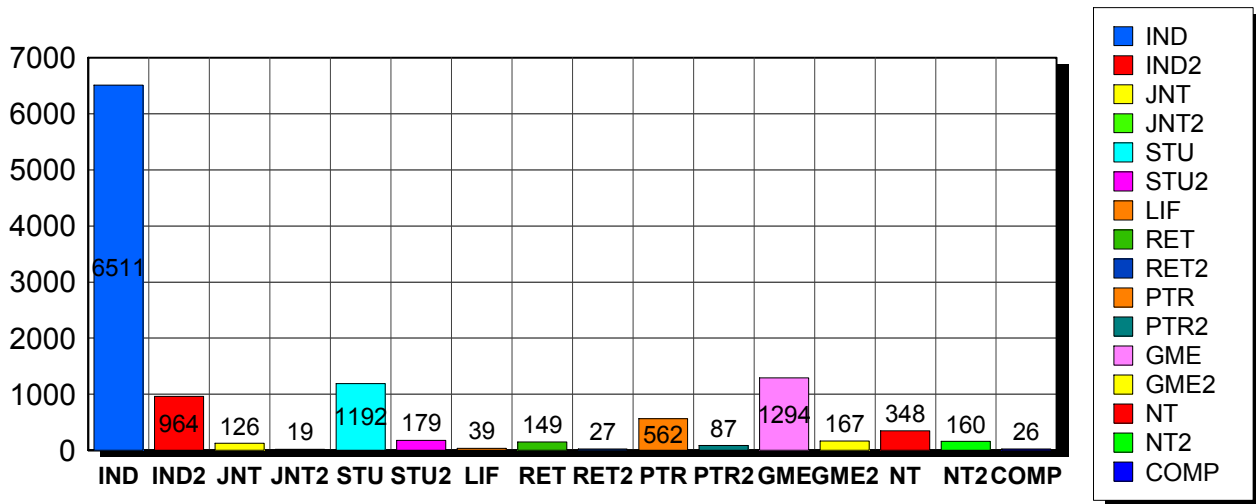


6/7/2010

Membership Statistics: Grand totals for basic membership, by member type

		<u># Memberships</u>	<u># Members</u>
IND	BASIC	6,511	6,511
IND2	BASIC	964	964
JNT	BASIC	126	252
JNT2	BASIC	19	38
STU	BASIC	1,192	1,192
STU2	BASIC	179	179
LIF	BASIC	39	39
RET	BASIC	149	149
RET2	BASIC	27	27
PTR	BASIC	562	562
PTR2	BASIC	87	87
GME	BASIC	1,294	1,294
GME2	BASIC	167	167
NT	BASIC	348	348
NT2	BASIC	160	160
COMP	BASIC	26	26
Grand Total:		11,850	11,995

Member Types



Note: in all general statistic reports, joint household memberships are treated as "one" member EXCEPT in the second column of this report, where joints are counted as two people, providing the most accurate count of the number of TESOL members.

This report is based on members paid through 5/31/2010 or later.

Country/State/Province	Total	
AFGHANISTAN	1	0.0%
ALBANIA	7	0.1%
ALGERIA	21	0.2%
ANGOLA	2	0.0%
ARGENTINA	30	0.3%
ARMENIA	4	0.0%
AUSTRALIA	61	0.5%
AUSTRIA	5	0.0%
AZERBAIJAN	3	0.0%
BAHRAIN	11	0.1%
BANGLADESH	9	0.1%
BELARUS	1	0.0%
BELGIUM	1	0.0%
BOLIVIA	57	0.5%
BOSNIA AND HERZEGOVINA	1	0.0%
BOTSWANA	1	0.0%
BRAZIL	110	0.9%
BRUNEI DARUSSALAM	1	0.0%
BULGARIA	1	0.0%
BURKINA FASO	3	0.0%
CAMBODIA	5	0.0%
CAMEROON	33	0.3%
Canada	1	0.0%
CANADA		
<i>CANADA</i>	<i>2</i>	
<i>CANADA Alberta</i>	<i>43</i>	
<i>CANADA British Columbia</i>	<i>97</i>	
<i>CANADA Manitoba</i>	<i>21</i>	
<i>CANADA New Brunswick</i>	<i>19</i>	
<i>CANADA Newfoundland</i>	<i>4</i>	
<i>CANADA Nova Scotia</i>	<i>12</i>	
<i>CANADA Nunavut</i>	<i>1</i>	
<i>CANADA Ontario</i>	<i>108</i>	
<i>CANADA Prince Edward Island</i>	<i>4</i>	
<i>CANADA Quebec</i>	<i>33</i>	
<i>CANADA Saskatchewan</i>	<i>9</i>	
CANADA	353	3.0%
CAPE VERDE	1	0.0%
CAYMAN ISLANDS	1	0.0%
CHILE	20	0.2%
CHINA	82	0.7%
COLOMBIA	37	0.3%
COSTA RICA	30	0.3%
COTE D'IVOIRE	1	0.0%
CROATIA	4	0.0%
CYPRUS	5	0.0%
CZECH REPUBLIC	8	0.1%
DENMARK	2	0.0%
DOMINICAN REPUBLIC	15	0.1%
EAST TIMOR	1	0.0%
ECUADOR	32	0.3%
EGYPT	21	0.2%
EL SALVADOR	5	0.0%
ESTONIA	1	0.0%
FINLAND	7	0.1%
FRANCE	17	0.1%
GEORGIA	6	0.1%

GERMANY	26	0.2%
GREECE	18	0.2%
GUAM	3	0.0%
GUATEMALA	19	0.2%
HAITI	8	0.1%
HONDURAS	9	0.1%
HONG KONG	10	0.1%
HONG KONG SAR CHINA	24	0.2%
HUNGARY	6	0.1%
ICELAND	3	0.0%
INDIA	28	0.2%
INDONESIA	33	0.3%
IRAN	5	0.0%
IRAN, ISLAMIC REPUBLIC OF	1	0.0%
IRAQ	19	0.2%
IRELAND	4	0.0%
ISRAEL	23	0.2%
ITALY	25	0.2%
JAMAICA	1	0.0%
JAPAN	450	3.8%
JORDAN	7	0.1%
KAZAKHSTAN	3	0.0%
KOREA, REPUBLIC OF	27	0.2%
KOSOVO (UNMIK)	2	0.0%
KUWAIT	19	0.2%
KYRGYZSTAN	2	0.0%
LAOS	11	0.1%
LATVIA	1	0.0%
LEBANON	9	0.1%
LIBYA	8	0.1%
LITHUANIA	4	0.0%
MACAO	9	0.1%
MACEDONIA	5	0.0%
MADAGASCAR	10	0.1%
MALAYSIA	17	0.1%
MALDIVES	1	0.0%
MALTA	1	0.0%
MARSHALL ISLANDS	5	0.0%
MEXICO	151	1.3%
MOLDOVA, REPUBLIC OF	4	0.0%
MONGOLIA	9	0.1%
MONTENEGRO	1	0.0%
MOROCCO	37	0.3%
MOZAMBIQUE	1	0.0%
MYANMAR	2	0.0%
NAMIBIA	1	0.0%
NEPAL	6	0.1%
NETHERLANDS	6	0.1%
NETHERLANDS ANTILLES	1	0.0%
NEW ZEALAND	14	0.1%
NICARAGUA	5	0.0%
NIGER	1	0.0%
NORWAY	2	0.0%
OMAN	13	0.1%
PAKISTAN	3	0.0%
PALAU	2	0.0%
PANAMA	37	0.3%
PARAGUAY	7	0.1%
PEOPLES REP OF CHINA	49	0.4%
PERU	88	0.7%
PHILIPPINES	55	0.5%

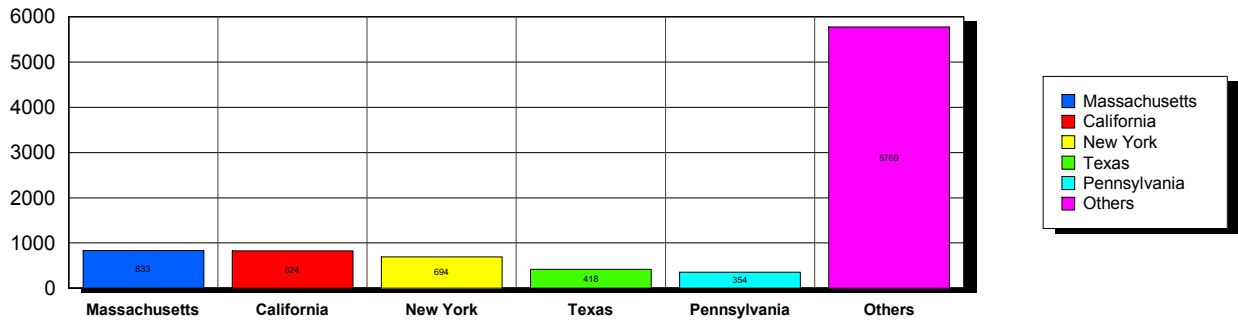
POLAND	11	0.1%
PORTUGAL	1	0.0%
QATAR	33	0.3%
ROMANIA	2	0.0%
RUSSIA	36	0.3%
RUSSIAN FEDERATION	9	0.1%
RWANDA	2	0.0%
SAO TOME AND PRINCIPE	1	0.0%
SAUDI ARABIA	41	0.3%
SENEGAL	9	0.1%
SERBIA	3	0.0%
SIERRA LEONE	1	0.0%
SINGAPORE	18	0.2%
SOUTH AFRICA	6	0.1%
SOUTH KOREA	56	0.5%
SPAIN	15	0.1%
SRI LANKA	3	0.0%
SUDAN	5	0.0%
SWAZILAND	1	0.0%
SWEDEN	7	0.1%
SWITZERLAND	9	0.1%
SYRIAN ARAB REPUBLIC	5	0.0%
TAIWAN	28	0.2%
TAIWAN ROC	46	0.4%
TAIWAN, PROVINCE OF CHINA	2	0.0%
TAJIKISTAN	3	0.0%
THAILAND	33	0.3%
TOGO	1	0.0%
TUNISIA	12	0.1%
TURKEY	50	0.4%
UGANDA	2	0.0%
UKRAINE	20	0.2%
UNITED ARAB EMIRATES	53	0.4%
UNITED KINGDOM	53	0.4%
URUGUAY	19	0.2%
US MINOR OUTLYING ISLANDS	4	0.0%
USA		
USA	36	
USA	Alabama	58
USA	Alaska	24
USA	American Embassy	20
USA	Arizona	177
USA	Arkansas	71
USA	Armed Forces	9
USA	Armed Frces Americas	1
USA	British Columbia	1
USA	California	825
USA	Canal Zone	1
USA	Colorado	170
USA	Connecticut	193
USA	Delaware	27
USA	District of Columbia	149
USA	Florida	316
USA	Georgia	212
USA	Guam	6
USA	Hawaii	68
USA	Idaho	30
USA	Illinois	310
USA	Indiana	154
USA	Iowa	97

USA	Kansas	95	
USA	Kentucky	60	
USA	Lousiana	48	
USA	Maine	60	
USA	Manitoba	2	
USA	Marshall Islands	1	
USA	Maryland	300	
USA	Massachusetts	827	
USA	Michigan	211	
USA	Minnesota	169	
USA	Mississippi	53	
USA	Missouri	150	
USA	Montana	12	
USA	N Mariana Islands	1	
USA	Nebraska	45	
USA	Nevada	48	
USA	New Hampshire	110	
USA	New Jersey	266	
USA	New Mexico	44	
USA	New York	686	
USA	North Carolina	126	
USA	North Dakota	21	
USA	Ohio	210	
USA	Oklahoma	73	
USA	Ontario	5	
USA	Oregon	169	
USA	Pennsylvania	349	
USA	Puerto Rico	45	
USA	Rhode Island	119	
USA	South Carolina	50	
USA	South Dakota	10	
USA	Tennessee	86	
USA	Texas	413	
USA	Utah	107	
USA	Vermont	102	
USA	Virginia	338	
USA	Washington	259	
USA	West Virgina	19	
USA	Wisconsin	184	
USA	Wyoming	15	
USA		8,843	74.6%
UZBEKISTAN		2	0.0%
VENEZUELA		10	0.1%
VIET NAM		3	0.0%
VIETNAM		16	0.1%
VIRGIN ISLANDS, U.S.		7	0.1%
YEMEN		2	0.0%
Grand Total:		11,852	

148 distinct countries represented.

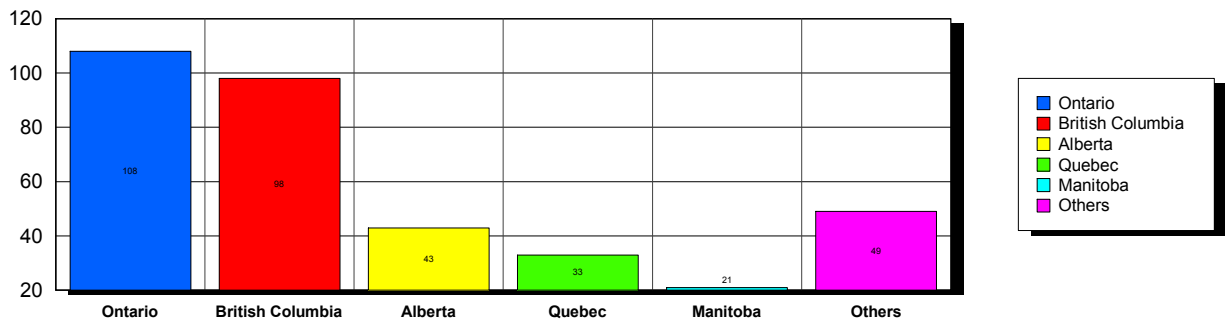
USA

Top 5 States per Country

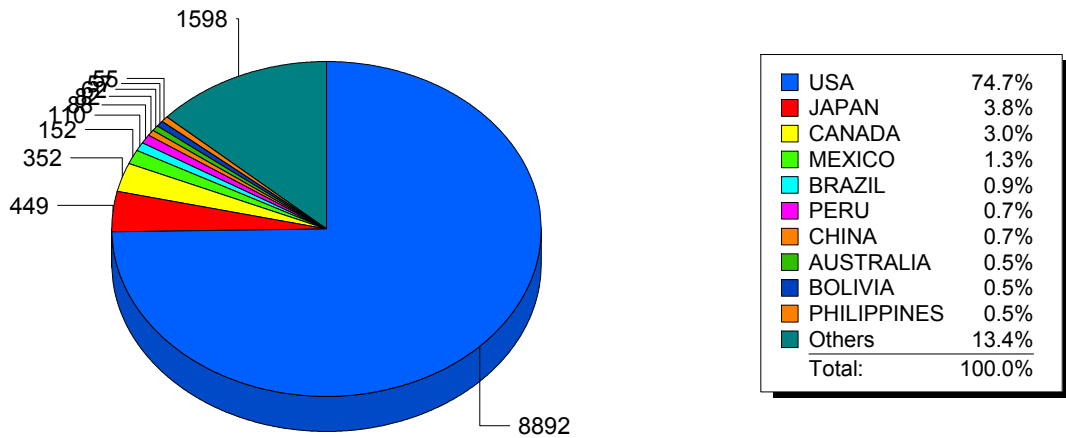


CANADA

Top 5 States per Country



Top 10 Countries



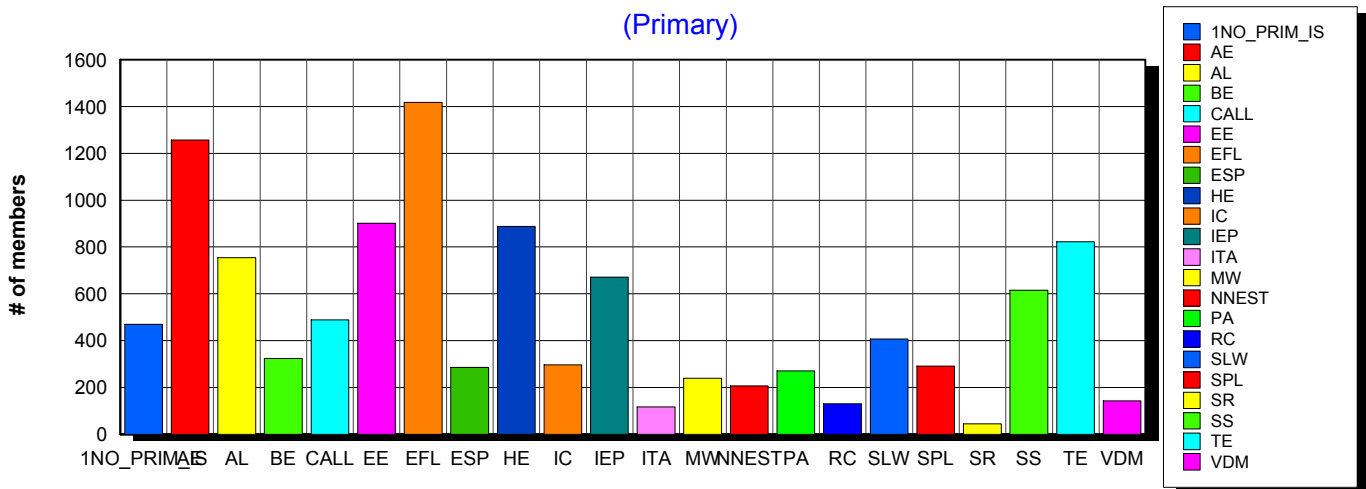
Basic statistics on Primary vs. other memberships in interest sections. For members paid through 5/31/2010 or later.

			<i>Primary versus other</i>	
No Primary Interest Section	1.2%	476	469	7
Adult Education	7.2%	2,779	1,257	1,522
Applied Linguistics	6.0%	2,338	754	1,584
Bilingual Education	4.0%	1,555	324	1,231
Computer-Assisted Language Learning	5.4%	2,084	489	1,595
Elementary Education	4.9%	1,876	901	975
English as a Foreign Language	8.1%	3,118	1,418	1,700
English for Specific Purposes	4.4%	1,689	285	1,404
Higher Education	6.1%	2,341	888	1,453
Intercultural Communication	4.7%	1,827	296	1,531
Intensive English Programs	5.3%	2,068	671	1,397
International Teaching Assistants	2.6%	1,023	116	907
Materials Writers	3.5%	1,372	239	1,133
Nonnative English Speakers in TESOL	3.1%	1,201	207	994
Program Administration	3.4%	1,313	271	1,042
Refugee Concerns	2.4%	939	130	809
Second Language Writing	5.7%	2,213	407	1,806
Speech, Pronunciation, and Listening	5.0%	1,949	291	1,658
Social Responsibility	1.9%	751	44	707
Secondary Schools	4.1%	1,599	615	984
Teacher Education	7.2%	2,767	823	1,944
Video & Digital Media	3.6%	1,386	142	1,244
<i>11,066 distinct members</i>		Total # of IS memberships	38,664	11,037
			27,627	

The total count is the number of IS memberships total and may either be LESS or MORE than the actual number of individual members of TESOL. Due to open access to Interest Sections, these numbers may fluctuate considerably each month. For instance, one member may have selected four interest sections, while some members may belong to none.

Interest Sections

(Primary)

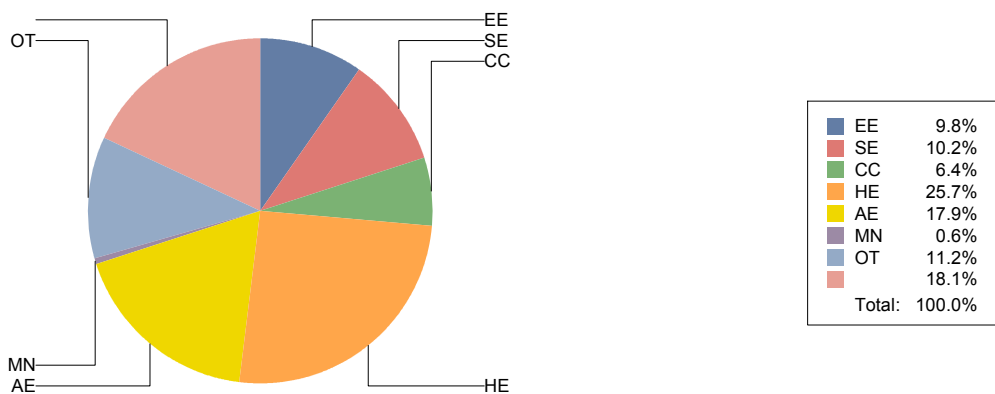


Basic Statistics on Area of Work (Members paid through >= 5/31/2010)

Elementary Education	EE	1,156	9.8%
Secondary Education	SE	1,203	10.2%
Community/2yr College	CC	752	6.4%
Postsecondary Education	HE	3,042	25.7%
Adult Education	AE	2,117	17.9%
Mainstream	MN	73	0.6%
Other	OT	1,328	11.2%
		2,143	18.1%
		11,814	

Only members who selected an area of work are included on this report. Other members may not have responded to this question and are excluded from the count.

Areas of Work



(Blanks indicate no response)

Statistics on Areas of Interest (Members paid through >= 5/31/2010)

<u>CODE</u>	<u>DESCRIPTION</u>	<u>TOTAL*</u>	<u>% of TOTAL*</u>
EFL	English as a foreign language	2,924	5%
CURRICULUM	Materials development/Curriculum	2,638	4%
TE	Teacher education	2,634	4%
SLA	Second language acquisition	2,560	4%
AL	Applied linguistics	2,473	4%
IC	Multiculturalism/intercultural communications	2,435	4%
AE	Adult education	2,351	4%
CALL	Technology in education	2,244	4%
WRITING	Writing/composition	2,228	4%
CONTENT	Content-based instruction	2,145	4%
HE	Higher education	2,070	3%
PROFDEV	Professional development	1,970	3%
IEP	Intensive English programs	1,953	3%
READING	Reading/literacy	1,906	3%
SP	Speaking/pronunciation	1,845	3%
ASSESS	Assessment/testing	1,769	3%
GRAMMAR	Grammar	1,719	3%
ESP	English for specific purposes	1,656	3%
BE	Bilingual education	1,522	2%
RS	Research	1,475	2%
EE	Elementary/primary education	1,252	2%
PA	Program administration	1,204	2%
DISTANCE	Distance learning/Online Education	1,183	2%
VOCAB	Vocabulary/Lexicon	1,130	2%
SS	Secondary education	1,092	2%
SOCIAL	Social/global/political concerns	1,042	2%
VI	Video and digital media	949	2%
WORKPLACE	Workplace English instruction/Business English	947	2%
ISKILL	Integrated Skills	927	2%
LISTEN	Listening	921	2%
COMMCOLL	Community college/technical ed	812	1%
LIT	Literature	726	1%
LINGUISTICS	Theoretical Linguistics	708	1%
RC	Refugee concerns	708	1%
STANDARDS	Standards	703	1%
ITA	International teaching assistants	689	1%
FAMILY	Community/family outreach	617	1%
EMPLOYMENT	Employment issues/Certification	501	1%
LDSN	Learning Disorders/Special Needs	487	1%
PUBLICPOLICY	Public policy	465	1%
MAINSTREAMING	Mainstreaming	445	1%
NNES	NNES/NES issues	442	1%
ARTS	Arts/Media/Science/Math/Social Science	359	1%
ACCRED	Accreditation	308	1%
STYLISTICS	Stylistics	124	0%

Sorted in order of prevalence.

** Note: Members are encouraged to choose multiple areas of interest and some members do not choose any areas of interest. The total number of distinct members (8,489) represented in this report is less than the total number of active members as indicated elsewhere in this report.*

Areas of interest are separate from official TESOL interest sections. Areas of interest represent distinct areas in which a member may be interested, rather than official entities in which a member is involved.

Areas of interest which have a very low count may be recent additions to the AOI list, or may reflect overall trends in membership.

Statistics on Areas of Expertise (Members paid through >= 5/31/2010)

<u>CODE</u>	<u>DESCRIPTION</u>	<u>TOTAL*</u>	<u>% of TOTAL*</u>
EFL	English as a foreign language	1,801	7%
AE	Adult education	1,463	6%
CURRICULUM	Materials development/Curriculum	1,246	5%
WRITING	Writing/composition	1,164	5%
AL	Applied linguistics	1,127	4%
TE	Teacher education	1,065	4%
SLA	Second language acquisition	1,055	4%
IEP	Intensive English programs	1,020	4%
HE	Higher education	959	4%
CONTENT	Content-based instruction	947	4%
GRAMMAR	Grammar	874	3%
IC	Multiculturalism/intercultural communications	824	3%
EE	Elementary/primary education	805	3%
READING	Reading/literacy	718	3%
CALL	Technology in education	695	3%
ESP	English for specific purposes	688	3%
PROFDEV	Professional development	677	3%
SP	Speaking/pronunciation	656	3%
ASSESS	Assessment/testing	633	2%
PA	Program administration	598	2%
SS	Secondary education	537	2%
BE	Bilingual education	528	2%
ISKILL	Integrated Skills	484	2%
COMMCOLL	Community college/technical ed	459	2%
WORKPLACE	Workplace English instruction/Business English	409	2%
DISTANCE	Distance learning/Online Education	401	2%
RS	Research	362	1%
LISTEN	Listening	345	1%
LIT	Literature	336	1%
VOCAB	Vocabulary/Lexicon	308	1%
SOCIAL	Social/global/political concerns	263	1%
VI	Video and digital media	216	1%
ITA	International teaching assistants	195	1%
ARTS	Arts/Media/Science/Math/Social Science	191	1%
FAMILY	Community/family outreach	187	1%
NNES	NNES/NES issues	185	1%
STANDARDS	Standards	161	1%
ACCRED	Accreditation	160	1%
RC	Refugee concerns	153	1%
LINGUISTICS	Theoretical Linguistics	151	1%
MAINSTREAMING	Mainstreaming	146	1%
LDSN	Learning Disorders/Special Needs	142	1%
EMPLOYMENT	Employment issues/Certification	109	0%
PUBLICPOLICY	Public policy	82	0%
STYLISTICS	Stylistics	28	0%

Sorted in order of prevalence.

** Note: Members are encouraged to choose multiple areas of expertise and some members do not choose any areas of expertise. The total number of distinct members (6,427) represented in this report is less than the total number of active members as indicated elsewhere in this report.*

Areas of Expertise are separate from official TESOL interest sections or Areas of Interest. Areas of expertise represent distinct areas in which a member may be experienced in, rather than official entities in which a member is involved.

Areas of interest which have a very low count may be recent additions to the AOI list, or may reflect overall trends in membership.