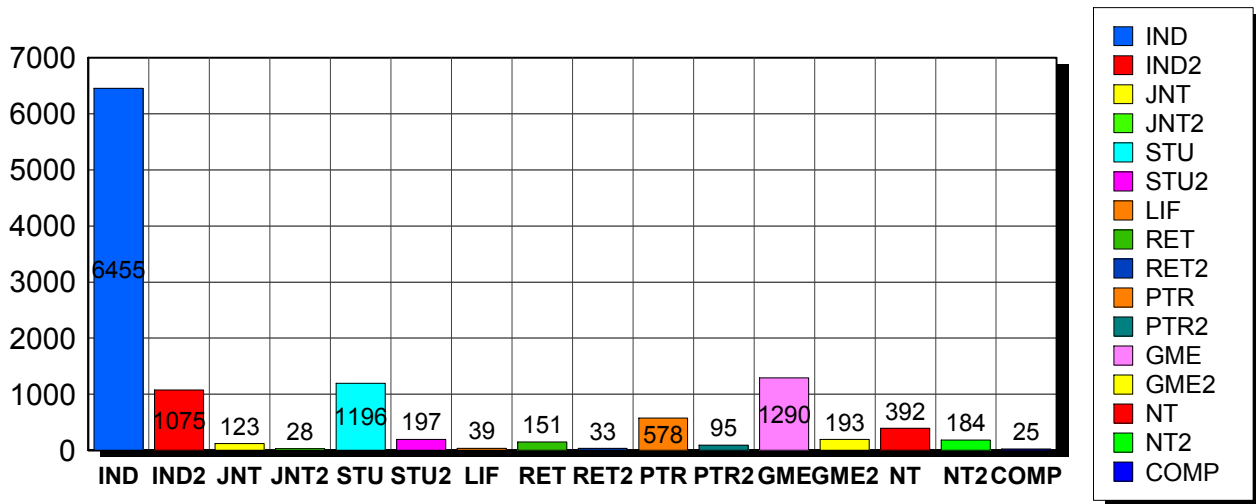


8/3/2010

Membership Statistics: Grand totals for basic membership, by member type

		<u># Memberships</u>	<u># Members</u>
IND	BASIC	6,455	6,455
IND2	BASIC	1,075	1,075
JNT	BASIC	123	246
JNT2	BASIC	28	56
STU	BASIC	1,196	1,196
STU2	BASIC	197	197
LIF	BASIC	39	39
RET	BASIC	151	151
RET2	BASIC	33	33
PTR	BASIC	578	578
PTR2	BASIC	95	95
GME	BASIC	1,290	1,290
GME2	BASIC	193	193
NT	BASIC	392	392
NT2	BASIC	184	184
COMP	BASIC	25	25
Grand Total:		12,054	12,205

Member Types



Note: in all general statistic reports, joint household memberships are treated as "one" member EXCEPT in the second column of this report, where joints are counted as two people, providing the most accurate count of the number of TESOL members.

This report is based on members paid through 7/31/2010 or later.

Country/State/Province	Total	
AFGHANISTAN	1	0.0%
ALBANIA	7	0.1%
ALGERIA	21	0.2%
ANGOLA	2	0.0%
ARGENTINA	30	0.2%
ARMENIA	3	0.0%
AUSTRALIA	62	0.5%
AUSTRIA	5	0.0%
AZERBAIJAN	3	0.0%
BAHRAIN	11	0.1%
BANGLADESH	9	0.1%
BELARUS	1	0.0%
BELGIUM	1	0.0%
BOLIVIA	60	0.5%
BOSNIA AND HERZEGOVINA	2	0.0%
BOTSWANA	2	0.0%
BRAZIL	113	0.9%
BRUNEI DARUSSALAM	1	0.0%
BULGARIA	1	0.0%
BURKINA FASO	3	0.0%
CAMBODIA	5	0.0%
CAMEROON	35	0.3%
Canada	1	0.0%
CANADA		
<i>CANADA</i>	<i>2</i>	
<i>CANADA Alberta</i>	<i>42</i>	
<i>CANADA British Columbia</i>	<i>93</i>	
<i>CANADA Manitoba</i>	<i>20</i>	
<i>CANADA New Brunswick</i>	<i>19</i>	
<i>CANADA Newfoundland</i>	<i>4</i>	
<i>CANADA Nova Scotia</i>	<i>12</i>	
<i>CANADA Ontario</i>	<i>103</i>	
<i>CANADA Prince Edward Island</i>	<i>3</i>	
<i>CANADA Quebec</i>	<i>32</i>	
<i>CANADA Saskatchewan</i>	<i>8</i>	
<i>CANADA Yukon Territory</i>	<i>1</i>	
CANADA	339	2.8%
CAPE VERDE	1	0.0%
CAYMAN ISLANDS	1	0.0%
CHILE	21	0.2%
CHINA	84	0.7%
COLOMBIA	37	0.3%
COSTA RICA	27	0.2%
COTE D'IVOIRE	1	0.0%
CROATIA	5	0.0%
CYPRUS	4	0.0%
CZECH REPUBLIC	8	0.1%
DENMARK	2	0.0%
DOMINICAN REPUBLIC	16	0.1%
EAST TIMOR	1	0.0%
ECUADOR	34	0.3%
EGYPT	24	0.2%
EL SALVADOR	5	0.0%
ESTONIA	1	0.0%
FINLAND	7	0.1%
FRANCE	17	0.1%
GEORGIA	6	0.0%

GERMANY	25	0.2%
GHANA	1	0.0%
GREECE	19	0.2%
GUAM	3	0.0%
GUATEMALA	19	0.2%
HAITI	10	0.1%
HONDURAS	9	0.1%
HONG KONG	12	0.1%
HONG KONG SAR CHINA	27	0.2%
HUNGARY	5	0.0%
ICELAND	3	0.0%
INDIA	33	0.3%
INDONESIA	32	0.3%
IRAN	7	0.1%
IRAN, ISLAMIC REPUBLIC OF	1	0.0%
IRAQ	19	0.2%
IRELAND	3	0.0%
ISRAEL	23	0.2%
ITALY	24	0.2%
JAMAICA	1	0.0%
JAPAN	449	3.7%
JORDAN	7	0.1%
KAZAKHSTAN	2	0.0%
KOREA, REPUBLIC OF	27	0.2%
KOSOVO (UNMIK)	2	0.0%
KUWAIT	17	0.1%
KYRGYZSTAN	2	0.0%
LAOS	11	0.1%
LATVIA	1	0.0%
LEBANON	9	0.1%
LIBYA	8	0.1%
LITHUANIA	4	0.0%
MACAO	8	0.1%
MACEDONIA	5	0.0%
MADAGASCAR	5	0.0%
MALAYSIA	17	0.1%
MALDIVES	1	0.0%
MALTA	1	0.0%
MARSHALL ISLANDS	4	0.0%
MARTINIQUE	1	0.0%
MEXICO	179	1.5%
MICRONESIA, FED STATES OF	1	0.0%
MOLDOVA, REPUBLIC OF	4	0.0%
MONGOLIA	9	0.1%
MONTENEGRO	1	0.0%
MOROCCO	36	0.3%
MOZAMBIOUE	1	0.0%
MYANMAR	2	0.0%
NAMIBIA	1	0.0%
NEPAL	7	0.1%
NETHERLANDS	6	0.0%
NEW ZEALAND	11	0.1%
NICARAGUA	6	0.0%
NIGER	1	0.0%
NIGERIA	1	0.0%
NORWAY	2	0.0%
OMAN	14	0.1%
PAKISTAN	4	0.0%
PALAU	2	0.0%
PALESTINIAN TERRITORY	1	0.0%
PANAMA	37	0.3%

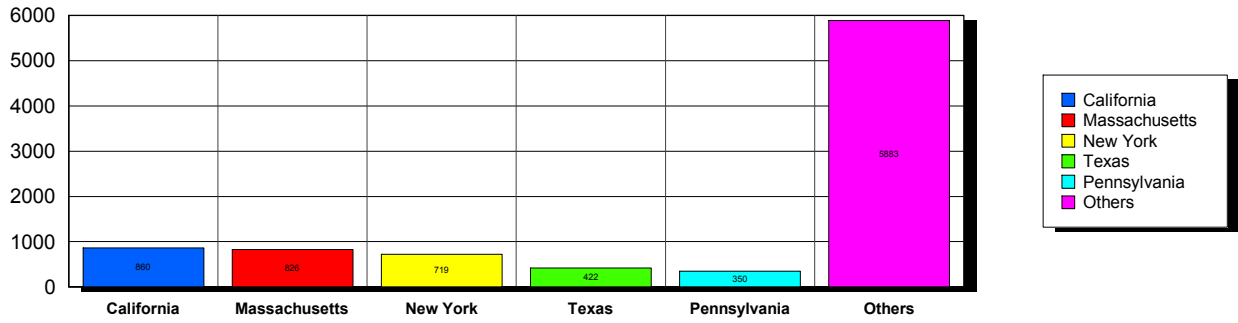
PARAGUAY		7	0.1%
PEOPLES REP OF CHINA		47	0.4%
PERU		90	0.7%
PHILIPPINES		56	0.5%
POLAND		10	0.1%
PORTUGAL		1	0.0%
QATAR		28	0.2%
ROMANIA		2	0.0%
RUSSIA		31	0.3%
RUSSIAN FEDERATION		7	0.1%
RWANDA		2	0.0%
SAO TOME AND PRINCIPE		1	0.0%
SAUDI ARABIA		39	0.3%
SENEGAL		9	0.1%
SERBIA		3	0.0%
SIERRA LEONE		1	0.0%
SINGAPORE		18	0.1%
SLOVAKIA		1	0.0%
SOUTH AFRICA		8	0.1%
SOUTH KOREA		53	0.4%
SPAIN		21	0.2%
SRI LANKA		3	0.0%
SUDAN		5	0.0%
SWAZILAND		1	0.0%
SWEDEN		9	0.1%
SWITZERLAND		8	0.1%
SYRIAN ARAB REPUBLIC		5	0.0%
TAIWAN		27	0.2%
TAIWAN ROC		44	0.4%
TAIWAN, PROVINCE OF CHINA		2	0.0%
TAJKISTAN		3	0.0%
THAILAND		30	0.2%
TOGO		1	0.0%
TUNISIA		12	0.1%
TURKEY		45	0.4%
UGANDA		1	0.0%
UKRAINE		13	0.1%
UNITED ARAB EMIRATES		55	0.5%
UNITED KINGDOM		52	0.4%
URUGUAY		20	0.2%
US MINOR OUTLYING ISLANDS		4	0.0%
USA			
<i>USA</i>		<i>48</i>	
<i>USA</i>	<i>Alabama</i>	<i>64</i>	
<i>USA</i>	<i>Alaska</i>	<i>26</i>	
<i>USA</i>	<i>American Embassy</i>	<i>24</i>	
<i>USA</i>	<i>Arizona</i>	<i>179</i>	
<i>USA</i>	<i>Arkansas</i>	<i>77</i>	
<i>USA</i>	<i>Armed Forces</i>	<i>9</i>	
<i>USA</i>	<i>Armed Frces Americas</i>	<i>1</i>	
<i>USA</i>	<i>British Columbia</i>	<i>1</i>	
<i>USA</i>	<i>California</i>	<i>862</i>	
<i>USA</i>	<i>Canal Zone</i>	<i>1</i>	
<i>USA</i>	<i>Colorado</i>	<i>182</i>	
<i>USA</i>	<i>Connecticut</i>	<i>199</i>	
<i>USA</i>	<i>Delaware</i>	<i>29</i>	
<i>USA</i>	<i>District of Columbia</i>	<i>145</i>	
<i>USA</i>	<i>Florida</i>	<i>328</i>	
<i>USA</i>	<i>Georgia</i>	<i>214</i>	
<i>USA</i>	<i>Guam</i>	<i>6</i>	
<i>USA</i>	<i>Hawaii</i>	<i>75</i>	

USA	Idaho	29	
USA	Illinois	313	
USA	Indiana	155	
USA	Iowa	103	
USA	Kansas	93	
USA	Kentucky	65	
USA	Louisiana	49	
USA	Maine	56	
USA	Manitoba	2	
USA	Marshall Islands	1	
USA	Maryland	302	
USA	Massachusetts	822	
USA	Michigan	209	
USA	Minnesota	183	
USA	Mississippi	53	
USA	Missouri	147	
USA	Montana	13	
USA	N Mariana Islands	1	
USA	Nebraska	47	
USA	Nevada	50	
USA	New Hampshire	105	
USA	New Jersey	271	
USA	New Mexico	47	
USA	New York	714	
USA	North Carolina	130	
USA	North Dakota	21	
USA	Ohio	207	
USA	Oklahoma	74	
USA	Ontario	4	
USA	Oregon	174	
USA	Pennsylvania	348	
USA	Puerto Rico	45	
USA	Rhode Island	118	
USA	South Carolina	48	
USA	South Dakota	10	
USA	Tennessee	90	
USA	Texas	422	
USA	Utah	106	
USA	Vermont	100	
USA	Virginia	344	
USA	Washington	269	
USA	West Virginia	25	
USA	Wisconsin	188	
USA	Wyoming	16	
USA		9,039	75.0%
UZBEKISTAN		2	0.0%
VENEZUELA		13	0.1%
VIET NAM		2	0.0%
VIETNAM		14	0.1%
VIRGIN ISLANDS, U.S.		6	0.0%
YEMEN		2	0.0%
Grand Total:		12,056	

153 distinct countries represented.

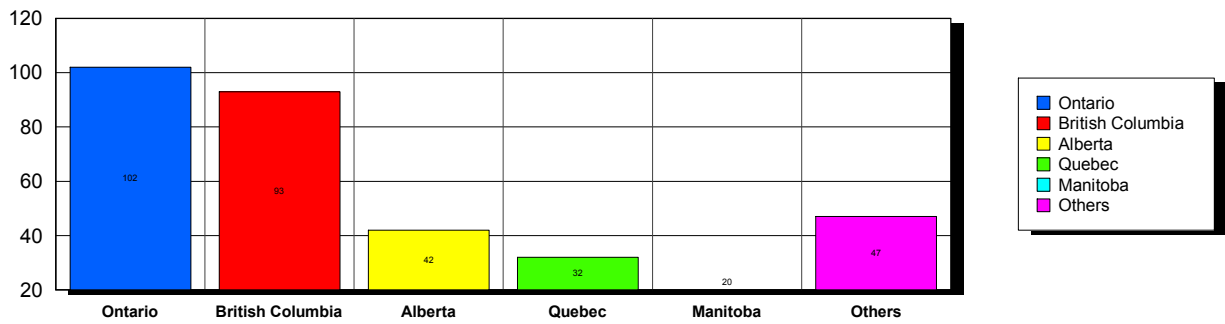
USA

Top 5 States per Country

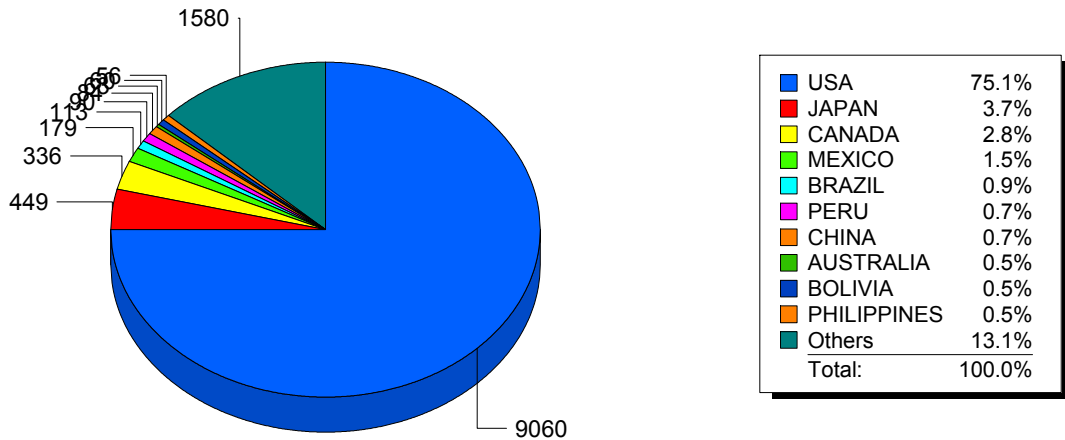


CANADA

Top 5 States per Country



Top 10 Countries



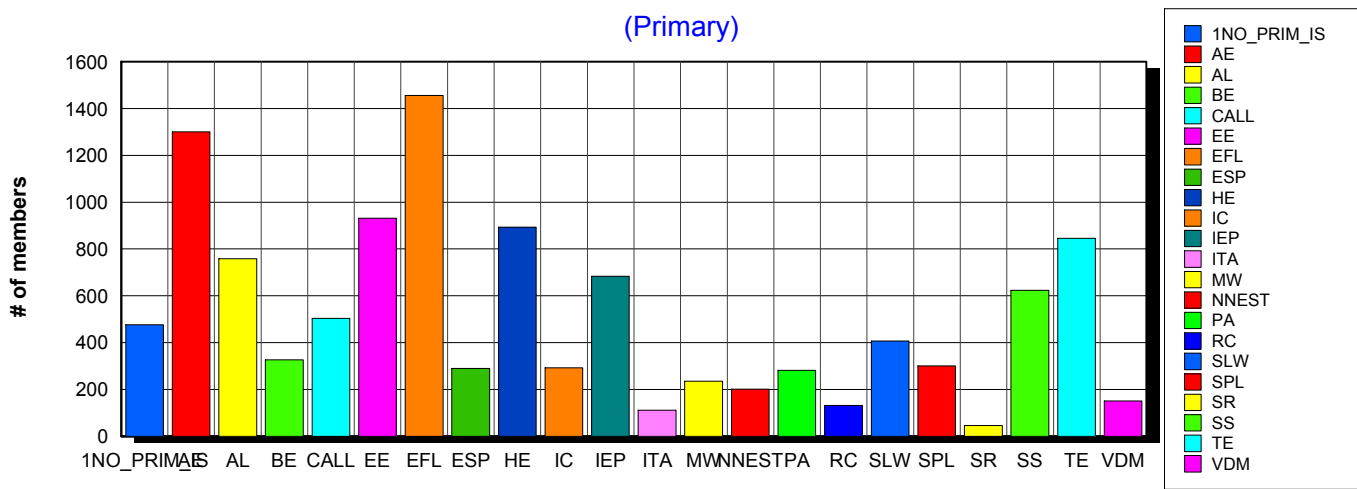
Basic statistics on Primary vs. other memberships in interest sections. For members paid through 7/31/2010 or later.

			Primary versus other		
No Primary Interest Section	1.2%	488	477	11	
Adult Education	7.3%	2,871	1,300	1,571	
Applied Linguistics	6.0%	2,382	759	1,623	
Bilingual Education	4.0%	1,599	327	1,272	
Computer-Assisted Language Learning	5.4%	2,125	503	1,622	
Elementary Education	4.9%	1,938	931	1,007	
English as a Foreign Language	8.1%	3,204	1,456	1,748	
English for Specific Purposes	4.3%	1,716	289	1,427	
Higher Education	6.1%	2,409	893	1,516	
Intercultural Communication	4.7%	1,855	292	1,563	
Intensive English Programs	5.4%	2,120	683	1,437	
International Teaching Assistants	2.6%	1,045	111	934	
Materials Writers	3.5%	1,385	235	1,150	
Nonnative English Speakers in TESOL	3.1%	1,227	201	1,026	
Program Administration	3.4%	1,355	281	1,074	
Refugee Concerns	2.4%	966	132	834	
Second Language Writing	5.7%	2,261	407	1,854	
Speech, Pronunciation, and Listening	5.1%	2,003	301	1,702	
Social Responsibility	2.0%	775	46	729	
Secondary Schools	4.1%	1,632	624	1,008	
Teacher Education	7.1%	2,823	846	1,977	
Video & Digital Media	3.6%	1,412	151	1,261	
<i>11,280 distinct members</i>		Total # of IS memberships	39,591	11,245	28,346

The total count is the number of IS memberships total and may either be LESS or MORE than the actual number of individual members of TESOL. Due to open access to Interest Sections, these numbers may fluctuate considerably each month. For instance, one member may have selected four interest sections, while some members may belong to none.

Interest Sections

(Primary)

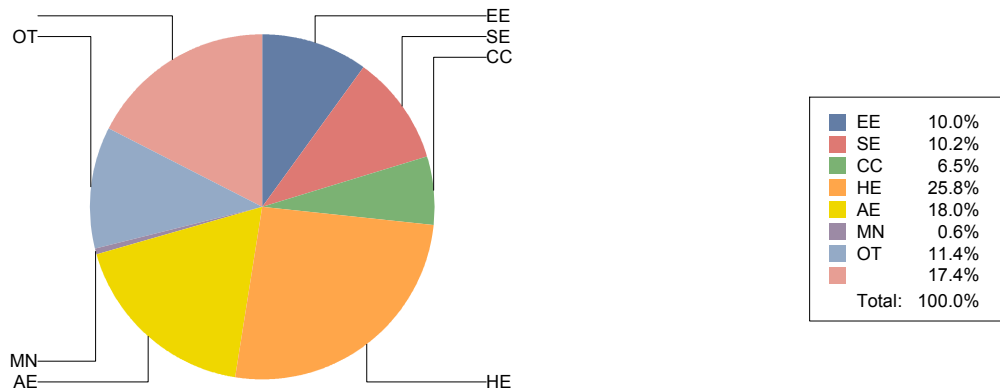


Basic Statistics on Area of Work (Members paid through >= 7/31/2010)

Elementary Education	EE	1,200	10.0%
Secondary Education	SE	1,232	10.2%
Community/2yr College	CC	787	6.5%
Postsecondary Education	HE	3,104	25.8%
Adult Education	AE	2,173	18.0%
Mainstream	MN	77	0.6%
Other	OT	1,373	11.4%
		2,099	17.4%
		12,045	

Only members who selected an area of work are included on this report. Other members may not have responded to this question and are excluded from the count.

Areas of Work



(Blanks indicate no response)

Statistics on Areas of Interest (Members paid through >= 7/31/2010)

<u>CODE</u>	<u>DESCRIPTION</u>	<u>TOTAL*</u>	<u>% of TOTAL*</u>
EFL	English as a foreign language	2,990	5%
CURRICULUM	Materials development/Curriculum	2,709	4%
TE	Teacher education	2,686	4%
SLA	Second language acquisition	2,639	4%
AL	Applied linguistics	2,509	4%
IC	Multiculturalism/intercultural communications	2,477	4%
AE	Adult education	2,416	4%
CALL	Technology in education	2,311	4%
WRITING	Writing/composition	2,288	4%
CONTENT	Content-based instruction	2,201	4%
HE	Higher education	2,126	3%
PROFDEV	Professional development	2,032	3%
IEP	Intensive English programs	1,973	3%
READING	Reading/literacy	1,972	3%
SP	Speaking/pronunciation	1,886	3%
ASSESS	Assessment/testing	1,834	3%
GRAMMAR	Grammar	1,752	3%
ESP	English for specific purposes	1,700	3%
BE	Bilingual education	1,572	3%
RS	Research	1,520	2%
EE	Elementary/primary education	1,269	2%
PA	Program administration	1,227	2%
DISTANCE	Distance learning/Online Education	1,223	2%
VOCAB	Vocabulary/Lexicon	1,162	2%
SS	Secondary education	1,106	2%
SOCIAL	Social/global/political concerns	1,065	2%
WORKPLACE	Workplace English instruction/Business English	988	2%
VI	Video and digital media	951	2%
LISTEN	Listening	939	1%
ISKILL	Integrated Skills	935	1%
COMMCOLL	Community college/technical ed	833	1%
RC	Refugee concerns	749	1%
LIT	Literature	739	1%
LINGUISTICS	Theoretical Linguistics	726	1%
STANDARDS	Standards	714	1%
ITA	International teaching assistants	703	1%
FAMILY	Community/family outreach	630	1%
EMPLOYMENT	Employment issues/Certification	517	1%
LDSN	Learning Disorders/Special Needs	508	1%
PUBLICPOLICY	Public policy	490	1%
MAINSTREAMING	Mainstreaming	451	1%
NNES	NNES/NES issues	448	1%
ARTS	Arts/Media/Science/Math/Social Science	364	1%
ACCRED	Accreditation	318	1%
STYLISTICS	Stylistics	127	0%

Sorted in order of prevalence.

** Note: Members are encouraged to choose multiple areas of interest and some members do not choose any areas of interest. The total number of distinct members (8,677) represented in this report is less than the total number of active members as indicated elsewhere in this report.*

Areas of interest are separate from official TESOL interest sections. Areas of interest represent distinct areas in which a member may be interested, rather than official entities in which a member is involved.

Areas of interest which have a very low count may be recent additions to the AOI list, or may reflect overall trends in membership.

Statistics on Areas of Expertise (Members paid through >= 7/31/2010)

<u>CODE</u>	<u>DESCRIPTION</u>	<u>TOTAL*</u>	<u>% of TOTAL*</u>
EFL	English as a foreign language	1,839	7%
AE	Adult education	1,525	6%
CURRICULUM	Materials development/Curriculum	1,301	5%
WRITING	Writing/composition	1,194	5%
AL	Applied linguistics	1,154	4%
TE	Teacher education	1,111	4%
SLA	Second language acquisition	1,099	4%
IEP	Intensive English programs	1,045	4%
HE	Higher education	1,010	4%
CONTENT	Content-based instruction	977	4%
GRAMMAR	Grammar	910	3%
IC	Multiculturalism/intercultural communications	849	3%
EE	Elementary/primary education	842	3%
READING	Reading/literacy	761	3%
ESP	English for specific purposes	724	3%
CALL	Technology in education	718	3%
PROFDEV	Professional development	711	3%
SP	Speaking/pronunciation	696	3%
ASSESS	Assessment/testing	665	3%
PA	Program administration	621	2%
BE	Bilingual education	557	2%
SS	Secondary education	552	2%
ISKILL	Integrated Skills	494	2%
COMMCOLL	Community college/technical ed	485	2%
WORKPLACE	Workplace English instruction/Business English	424	2%
DISTANCE	Distance learning/Online Education	416	2%
RS	Research	384	1%
LISTEN	Listening	358	1%
LIT	Literature	345	1%
VOCAB	Vocabulary/Lexicon	321	1%
SOCIAL	Social/global/political concerns	270	1%
VI	Video and digital media	213	1%
FAMILY	Community/family outreach	196	1%
ITA	International teaching assistants	194	1%
NNES	NNES/NES issues	191	1%
ARTS	Arts/Media/Science/Math/Social Science	190	1%
STANDARDS	Standards	173	1%
ACCRED	Accreditation	162	1%
RC	Refugee concerns	162	1%
LINGUISTICS	Theoretical Linguistics	158	1%
MAINSTREAMING	Mainstreaming	154	1%
LDSN	Learning Disorders/Special Needs	145	1%
EMPLOYMENT	Employment issues/Certification	111	0%
PUBLICPOLICY	Public policy	87	0%
STYLISTICS	Stylistics	29	0%

Sorted in order of prevalence.

** Note: Members are encouraged to choose multiple areas of expertise and some members do not choose any areas of expertise. The total number of distinct members (6,583) represented in this report is less than the total number of active members as indicated elsewhere in this report.*

Areas of Expertise are separate from official TESOL interest sections or Areas of Interest. Areas of expertise represent distinct areas in which a member may be experienced in, rather than official entities in which a member is involved.

Areas of interest which have a very low count may be recent additions to the AOI list, or may reflect overall trends in membership.