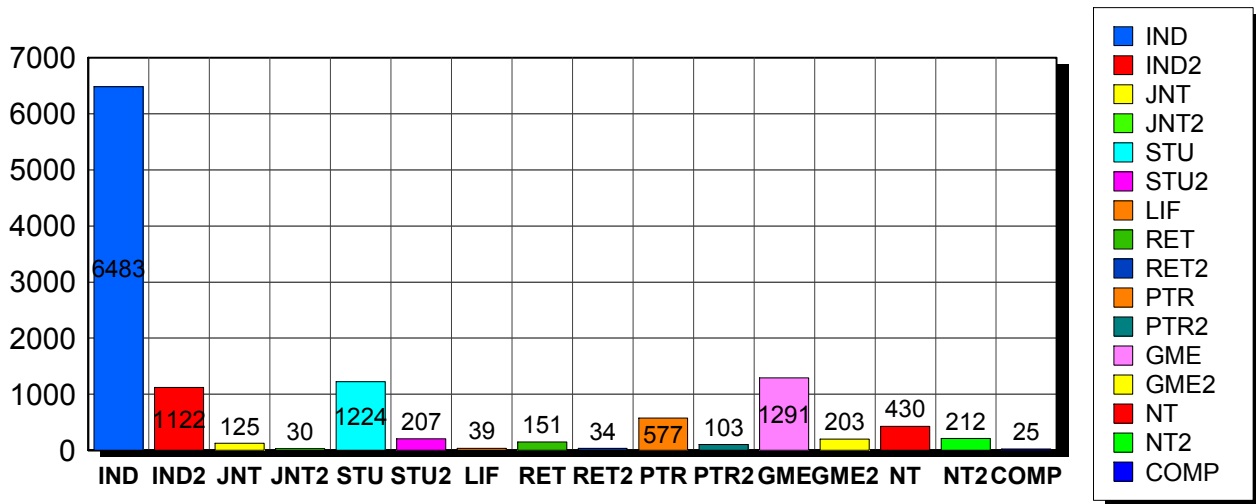


9/9/2010

Membership Statistics: Grand totals for basic membership, by member type

		<u># Memberships</u>	<u># Members</u>
IND	BASIC	6,483	6,483
IND2	BASIC	1,122	1,122
JNT	BASIC	125	250
JNT2	BASIC	30	60
STU	BASIC	1,224	1,224
STU2	BASIC	207	207
LIF	BASIC	39	39
RET	BASIC	151	151
RET2	BASIC	34	34
PTR	BASIC	577	577
PTR2	BASIC	103	103
GME	BASIC	1,291	1,291
GME2	BASIC	203	203
NT	BASIC	430	430
NT2	BASIC	212	212
COMP	BASIC	25	25
Grand Total:		12,256	12,411

Member Types



Note: in all general statistic reports, joint household memberships are treated as "one" member EXCEPT in the second column of this report, where joints are counted as two people, providing the most accurate count of the number of TESOL members.

This report is based on members paid through 8/31/2010 or later.

Country/State/Province	Total	
AFGHANISTAN	1	0.0%
ALBANIA	7	0.1%
ALGERIA	20	0.2%
ANGOLA	2	0.0%
ARGENTINA	31	0.3%
ARMENIA	5	0.0%
AUSTRALIA	69	0.6%
AUSTRIA	5	0.0%
AZERBAIJAN	4	0.0%
BAHRAIN	11	0.1%
BANGLADESH	10	0.1%
BELARUS	1	0.0%
BELGIUM	1	0.0%
BOLIVIA	60	0.5%
BOSNIA AND HERZEGOVINA	1	0.0%
BOTSWANA	2	0.0%
BRAZIL	113	0.9%
BRUNEI DARUSSALAM	1	0.0%
BULGARIA	1	0.0%
BURKINA FASO	3	0.0%
CAMBODIA	5	0.0%
CAMEROON	34	0.3%
Canada	1	0.0%
CANADA		
<i>CANADA</i>	<i>2</i>	
<i>CANADA Alberta</i>	<i>43</i>	
<i>CANADA British Columbia</i>	<i>94</i>	
<i>CANADA Manitoba</i>	<i>19</i>	
<i>CANADA New Brunswick</i>	<i>19</i>	
<i>CANADA Newfoundland</i>	<i>4</i>	
<i>CANADA Nova Scotia</i>	<i>12</i>	
<i>CANADA Ontario</i>	<i>106</i>	
<i>CANADA Prince Edward Island</i>	<i>3</i>	
<i>CANADA Quebec</i>	<i>32</i>	
<i>CANADA Saskatchewan</i>	<i>8</i>	
<i>CANADA Yukon Territory</i>	<i>1</i>	
CANADA	343	2.8%
CAPE VERDE	1	0.0%
CAYMAN ISLANDS	1	0.0%
CHILE	24	0.2%
CHINA	85	0.7%
COLOMBIA	37	0.3%
COSTA RICA	28	0.2%
COTE D'IVOIRE	1	0.0%
CROATIA	5	0.0%
CYPRUS	4	0.0%
CZECH REPUBLIC	8	0.1%
DENMARK	2	0.0%
DOMINICAN REPUBLIC	15	0.1%
EAST TIMOR	1	0.0%
ECUADOR	35	0.3%
EGYPT	26	0.2%
EL SALVADOR	5	0.0%
ESTONIA	1	0.0%
FINLAND	7	0.1%
FRANCE	16	0.1%
GEORGIA	6	0.0%

GERMANY	26	0.2%
GHANA	1	0.0%
GREECE	17	0.1%
GUAM	3	0.0%
GUATEMALA	20	0.2%
HAITI	13	0.1%
HONDURAS	9	0.1%
HONG KONG	13	0.1%
HONG KONG SAR CHINA	27	0.2%
HUNGARY	4	0.0%
ICELAND	3	0.0%
INDIA	31	0.3%
INDONESIA	32	0.3%
IRAN	8	0.1%
IRAN, ISLAMIC REPUBLIC OF	1	0.0%
IRAQ	19	0.2%
IRELAND	3	0.0%
ISRAEL	22	0.2%
ITALY	23	0.2%
JAMAICA	1	0.0%
JAPAN	454	3.7%
JORDAN	7	0.1%
KAZAKHSTAN	7	0.1%
KOREA, REPUBLIC OF	28	0.2%
KOSOVO (UNMIK)	2	0.0%
KUWAIT	18	0.1%
KYRGYZSTAN	2	0.0%
LAOS	11	0.1%
LATVIA	1	0.0%
LEBANON	10	0.1%
LIBYA	7	0.1%
LITHUANIA	4	0.0%
MACAO	8	0.1%
MACEDONIA	2	0.0%
MADAGASCAR	5	0.0%
MALAYSIA	21	0.2%
MALDIVES	1	0.0%
MALTA	1	0.0%
MARSHALL ISLANDS	4	0.0%
MARTINIQUE	1	0.0%
MAURITIUS	1	0.0%
MEXICO	190	1.6%
MICRONESIA, FED STATES OF	1	0.0%
MOLDOVA, REPUBLIC OF	4	0.0%
MONGOLIA	9	0.1%
MONTENEGRO	1	0.0%
MOROCCO	36	0.3%
MOZAMBIOUE	1	0.0%
MYANMAR	1	0.0%
NAMIBIA	1	0.0%
NEPAL	5	0.0%
NETHERLANDS	7	0.1%
NEW ZEALAND	12	0.1%
NICARAGUA	6	0.0%
NIGER	1	0.0%
NIGERIA	1	0.0%
NORWAY	3	0.0%
OMAN	15	0.1%
PAKISTAN	5	0.0%
PALAU	2	0.0%
PALESTINIAN TERRITORY	1	0.0%

PANAMA	39	0.3%
PARAGUAY	7	0.1%
PEOPLES REP OF CHINA	48	0.4%
PERU	90	0.7%
PHILIPPINES	52	0.4%
POLAND	10	0.1%
PORTUGAL	1	0.0%
QATAR	29	0.2%
ROMANIA	2	0.0%
RUSSIA	26	0.2%
RUSSIAN FEDERATION	5	0.0%
RWANDA	2	0.0%
SAO TOME AND PRINCIPE	1	0.0%
SAUDI ARABIA	38	0.3%
SENEGAL	9	0.1%
SERBIA	4	0.0%
SIERRA LEONE	1	0.0%
SINGAPORE	17	0.1%
SLOVAKIA	1	0.0%
SOUTH AFRICA	7	0.1%
SOUTH KOREA	55	0.4%
SPAIN	22	0.2%
SRI LANKA	3	0.0%
SUDAN	5	0.0%
SWAZILAND	1	0.0%
SWEDEN	9	0.1%
SWITZERLAND	8	0.1%
SYRIAN ARAB REPUBLIC	5	0.0%
TAIWAN	28	0.2%
TAIWAN ROC	43	0.4%
TAIWAN, PROVINCE OF CHINA	2	0.0%
TAJKISTAN	3	0.0%
THAILAND	35	0.3%
TOGO	1	0.0%
TUNISIA	7	0.1%
TURKEY	46	0.4%
UGANDA	1	0.0%
UKRAINE	14	0.1%
UNITED ARAB EMIRATES	56	0.5%
UNITED KINGDOM	56	0.5%
URUGUAY	21	0.2%
US MINOR OUTLYING ISLANDS	4	0.0%

USA

USA	45	
USA	Alabama	70
USA	Alaska	27
USA	American Embassy	25
USA	Arizona	184
USA	Arkansas	77
USA	Armed Forces	10
USA	Armed Frces Americas	1
USA	British Columbia	1
USA	California	872
USA	Canal Zone	1
USA	Colorado	183
USA	Connecticut	202
USA	Delaware	28
USA	District of Columbia	145
USA	Florida	344
USA	Georgia	217
USA	Guam	6

USA	Hawaii	75	
USA	Idaho	29	
USA	Illinois	313	
USA	Indiana	157	
USA	Iowa	103	
USA	Kansas	96	
USA	Kentucky	66	
USA	Louisiana	44	
USA	Maine	57	
USA	Manitoba	2	
USA	Marshall Islands	1	
USA	Maryland	303	
USA	Massachusetts	826	
USA	Michigan	208	
USA	Minnesota	186	
USA	Mississippi	55	
USA	Missouri	151	
USA	Montana	14	
USA	N Mariana Islands	1	
USA	Nebraska	48	
USA	Nevada	51	
USA	New Hampshire	106	
USA	New Jersey	276	
USA	New Mexico	48	
USA	New York	737	
USA	North Carolina	139	
USA	North Dakota	21	
USA	Ohio	209	
USA	Oklahoma	76	
USA	Ontario	4	
USA	Oregon	172	
USA	Pennsylvania	360	
USA	Puerto Rico	47	
USA	Rhode Island	117	
USA	South Carolina	52	
USA	South Dakota	10	
USA	Tennessee	94	
USA	Texas	431	
USA	Utah	108	
USA	Vermont	101	
USA	Virginia	355	
USA	Washington	269	
USA	West Virginia	25	
USA	Wisconsin	191	
USA	Wyoming	17	
USA		9,189	75.0%
UZBEKISTAN		2	0.0%
VENEZUELA		16	0.1%
VIET NAM		2	0.0%
VIETNAM		14	0.1%
VIRGIN ISLANDS, U.S.		6	0.0%
YEMEN		1	0.0%
Grand Total:		12,256	

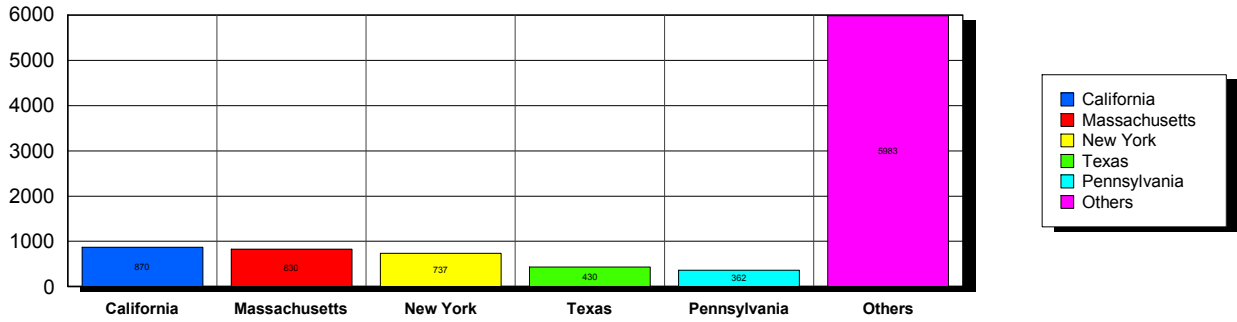
154 distinct countries represented.

9/9/2010

Membership counts by country for members paid through 08/31/2010 or later.

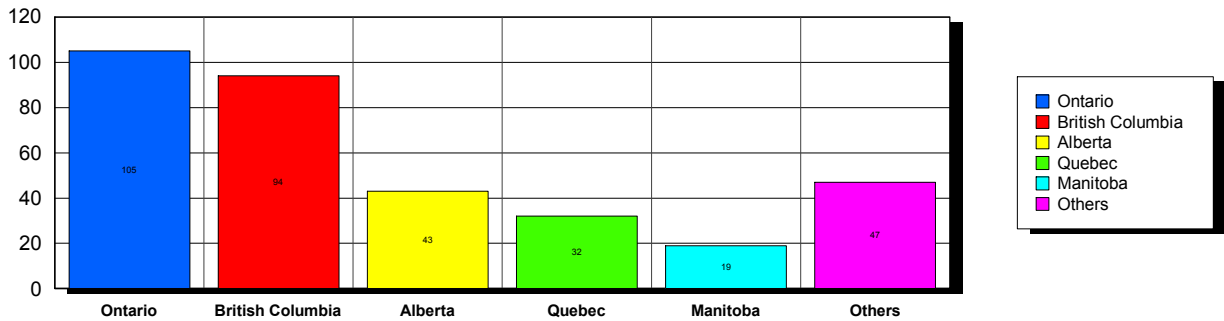
USA

Top 5 States per Country

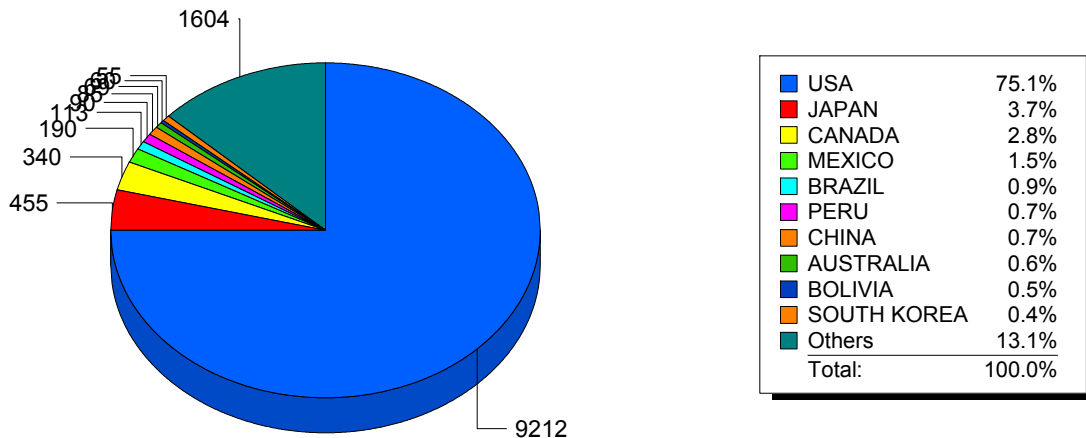


CANADA

Top 5 States per Country



Top 10 Countries



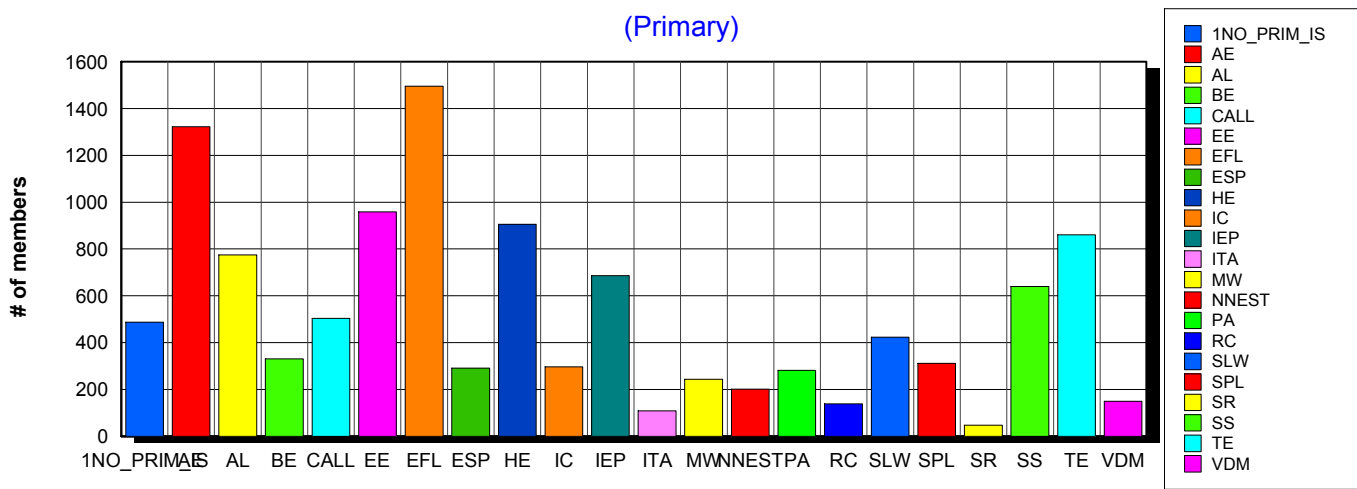
Basic statistics on Primary vs. other memberships in interest sections. For members paid through 8/31/2010 or later.

			<i>Primary versus other</i>	
No Primary Interest Section	1.2%	497	487	10
Adult Education	7.2%	2,939	1,322	1,617
Applied Linguistics	6.0%	2,447	775	1,672
Bilingual Education	4.0%	1,629	331	1,298
Computer-Assisted Language Learning	5.3%	2,163	504	1,659
Elementary Education	4.9%	1,988	959	1,029
English as a Foreign Language	8.1%	3,296	1,496	1,800
English for Specific Purposes	4.3%	1,760	291	1,469
Higher Education	6.1%	2,468	905	1,563
Intercultural Communication	4.7%	1,907	296	1,611
Intensive English Programs	5.3%	2,152	686	1,466
International Teaching Assistants	2.6%	1,073	108	965
Materials Writers	3.5%	1,409	243	1,166
Nonnative English Speakers in TESOL	3.1%	1,251	201	1,050
Program Administration	3.4%	1,383	281	1,102
Refugee Concerns	2.5%	996	138	858
Second Language Writing	5.8%	2,342	423	1,919
Speech, Pronunciation, and Listening	5.1%	2,059	312	1,747
Social Responsibility	2.0%	808	47	761
Secondary Schools	4.1%	1,667	640	1,027
Teacher Education	7.1%	2,890	860	2,030
Video & Digital Media	3.6%	1,447	150	1,297
<i>11,483 distinct members</i>		Total # of IS memberships	40,571	11,455
			29,116	

The total count is the number of IS memberships total and may either be LESS or MORE than the actual number of individual members of TESOL. Due to open access to Interest Sections, these numbers may fluctuate considerably each month. For instance, one member may have selected four interest sections, while some members may belong to none.

Interest Sections

(Primary)

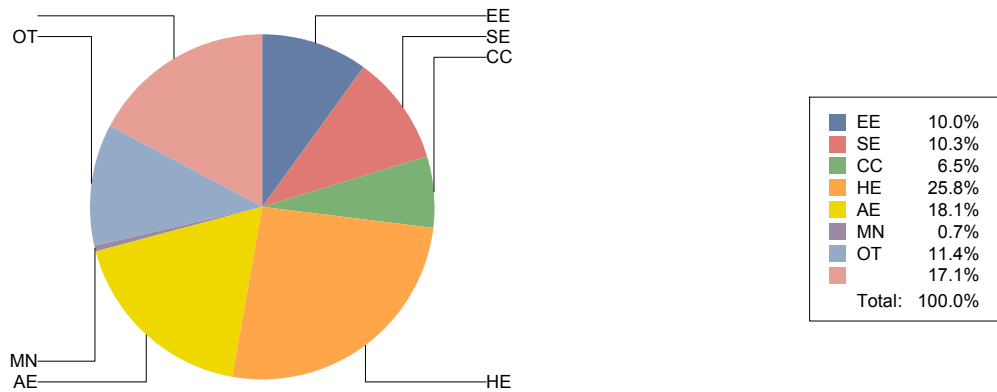


Basic Statistics on Area of Work (Members paid through >= 8/31/2010)

Elementary Education	EE	1,228	10.0%
Secondary Education	SE	1,264	10.3%
Community/2yr College	CC	795	6.5%
Postsecondary Education	HE	3,164	25.8%
Adult Education	AE	2,218	18.1%
Mainstream	MN	81	0.7%
Other	OT	1,398	11.4%
		2,094	17.1%
		12,242	

Only members who selected an area of work are included on this report. Other members may not have responded to this question and are excluded from the count.

Areas of Work



(Blanks indicate no response)

Statistics on Areas of Interest (Members paid through >= 8/31/2010)

<u>CODE</u>	<u>DESCRIPTION</u>	<u>TOTAL*</u>	<u>% of TOTAL*</u>
EFL	English as a foreign language	3,058	5%
CURRICULUM	Materials development/Curriculum	2,786	4%
TE	Teacher education	2,737	4%
SLA	Second language acquisition	2,723	4%
AL	Applied linguistics	2,566	4%
IC	Multiculturalism/intercultural communications	2,536	4%
AE	Adult education	2,479	4%
WRITING	Writing/composition	2,376	4%
CALL	Technology in education	2,368	4%
CONTENT	Content-based instruction	2,271	4%
HE	Higher education	2,176	3%
PROFDEV	Professional development	2,104	3%
READING	Reading/literacy	2,057	3%
IEP	Intensive English programs	2,016	3%
SP	Speaking/pronunciation	1,938	3%
ASSESS	Assessment/testing	1,887	3%
GRAMMAR	Grammar	1,817	3%
ESP	English for specific purposes	1,731	3%
BE	Bilingual education	1,600	2%
RS	Research	1,547	2%
EE	Elementary/primary education	1,302	2%
DISTANCE	Distance learning/Online Education	1,253	2%
PA	Program administration	1,243	2%
VOCAB	Vocabulary/Lexicon	1,200	2%
SS	Secondary education	1,145	2%
SOCIAL	Social/global/political concerns	1,092	2%
WORKPLACE	Workplace English instruction/Business English	1,027	2%
LISTEN	Listening	984	2%
ISKILL	Integrated Skills	982	2%
VI	Video and digital media	968	1%
COMMCOLL	Community college/technical ed	864	1%
RC	Refugee concerns	774	1%
LIT	Literature	758	1%
LINGUISTICS	Theoretical Linguistics	747	1%
STANDARDS	Standards	739	1%
ITA	International teaching assistants	717	1%
FAMILY	Community/family outreach	651	1%
EMPLOYMENT	Employment issues/Certification	539	1%
LDSN	Learning Disorders/Special Needs	536	1%
PUBLICPOLICY	Public policy	497	1%
MAINSTREAMING	Mainstreaming	464	1%
NNES	NNES/NES issues	461	1%
ARTS	Arts/Media/Science/Math/Social Science	374	1%
ACCRED	Accreditation	326	1%
STYLISTICS	Stylistics	129	0%

Sorted in order of prevalence.

** Note: Members are encouraged to choose multiple areas of interest and some members do not choose any areas of interest. The total number of distinct members (8,849) represented in this report is less than the total number of active members as indicated elsewhere in this report.*

Areas of interest are separate from official TESOL interest sections. Areas of interest represent distinct areas in which a member may be interested, rather than official entities in which a member is involved.

Areas of interest which have a very low count may be recent additions to the AOI list, or may reflect overall trends in membership.

Statistics on Areas of Expertise (Members paid through >= 8/31/2010)

<u>CODE</u>	<u>DESCRIPTION</u>	<u>TOTAL*</u>	<u>% of TOTAL*</u>
EFL	English as a foreign language	1,879	7%
AE	Adult education	1,575	6%
CURRICULUM	Materials development/Curriculum	1,334	5%
WRITING	Writing/composition	1,222	4%
AL	Applied linguistics	1,189	4%
TE	Teacher education	1,149	4%
SLA	Second language acquisition	1,120	4%
IEP	Intensive English programs	1,075	4%
HE	Higher education	1,040	4%
CONTENT	Content-based instruction	1,008	4%
GRAMMAR	Grammar	926	3%
IC	Multiculturalism/intercultural communications	871	3%
EE	Elementary/primary education	866	3%
READING	Reading/literacy	783	3%
CALL	Technology in education	746	3%
ESP	English for specific purposes	744	3%
PROFDEV	Professional development	732	3%
SP	Speaking/pronunciation	713	3%
ASSESS	Assessment/testing	687	3%
PA	Program administration	630	2%
BE	Bilingual education	573	2%
SS	Secondary education	572	2%
ISKILL	Integrated Skills	506	2%
COMMCOLL	Community college/technical ed	493	2%
WORKPLACE	Workplace English instruction/Business English	438	2%
DISTANCE	Distance learning/Online Education	428	2%
RS	Research	393	1%
LISTEN	Listening	367	1%
LIT	Literature	352	1%
VOCAB	Vocabulary/Lexicon	328	1%
SOCIAL	Social/global/political concerns	274	1%
VI	Video and digital media	215	1%
FAMILY	Community/family outreach	207	1%
ITA	International teaching assistants	195	1%
ARTS	Arts/Media/Science/Math/Social Science	194	1%
NNES	NNES/NES issues	191	1%
STANDARDS	Standards	175	1%
RC	Refugee concerns	165	1%
ACCRED	Accreditation	161	1%
LINGUISTICS	Theoretical Linguistics	160	1%
MAINSTREAMING	Mainstreaming	157	1%
LDSN	Learning Disorders/Special Needs	149	1%
EMPLOYMENT	Employment issues/Certification	116	0%
PUBLICPOLICY	Public policy	85	0%
STYLISTICS	Stylistics	28	0%

Sorted in order of prevalence.

** Note: Members are encouraged to choose multiple areas of expertise and some members do not choose any areas of expertise. The total number of distinct members (6,743) represented in this report is less than the total number of active members as indicated elsewhere in this report.*

Areas of Expertise are separate from official TESOL interest sections or Areas of Interest. Areas of expertise represent distinct areas in which a member may be experienced in, rather than official entities in which a member is involved.

Areas of interest which have a very low count may be recent additions to the AOI list, or may reflect overall trends in membership.