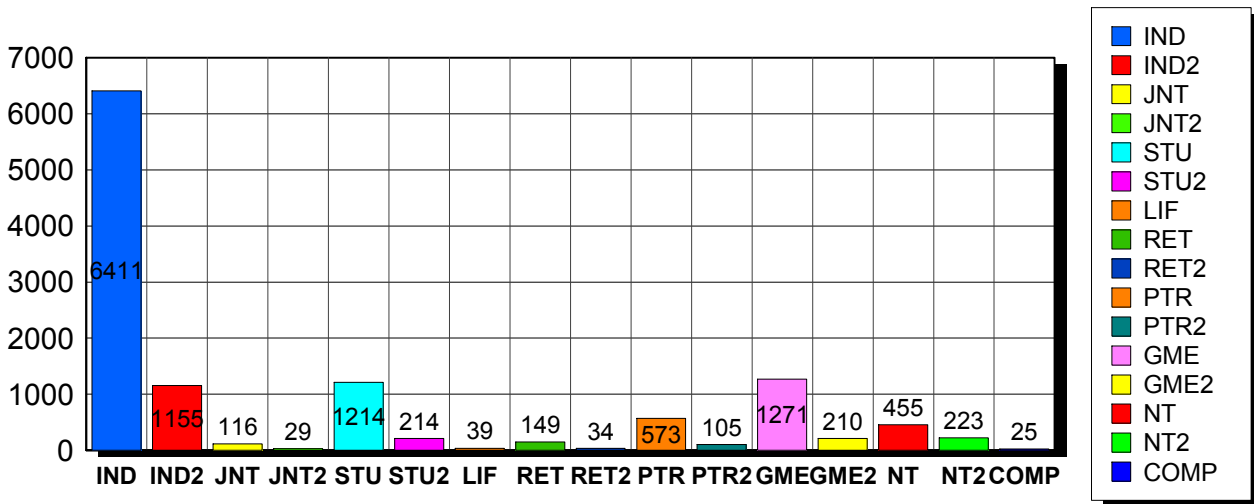


10/6/2010

### Membership Statistics: Grand totals for basic membership, by member type

		<u># Memberships</u>	<u># Members</u>
IND	BASIC	6,411	6,411
IND2	BASIC	1,155	1,155
JNT	BASIC	116	232
JNT2	BASIC	29	58
STU	BASIC	1,214	1,214
STU2	BASIC	214	214
LIF	BASIC	39	39
RET	BASIC	149	149
RET2	BASIC	34	34
PTR	BASIC	573	573
PTR2	BASIC	105	105
GME	BASIC	1,271	1,271
GME2	BASIC	210	210
NT	BASIC	455	455
NT2	BASIC	223	223
COMP	BASIC	25	25
<b>Grand Total:</b>		<b>12,223</b>	<b>12,368</b>

### Member Types



Note: in all general statistic reports, joint household memberships are treated as "one" member EXCEPT in the second column of this report, where joints are counted as two people, providing the most accurate count of the number of TESOL members.

This report is based on members paid through 9/30/2010 or later.

Country/State/Province	Total	
<b>AFGHANISTAN</b>	<b>1</b>	0.0%
<b>ALBANIA</b>	<b>7</b>	0.1%
<b>ALGERIA</b>	<b>20</b>	0.2%
<b>ANGOLA</b>	<b>2</b>	0.0%
<b>ARGENTINA</b>	<b>30</b>	0.2%
<b>ARMENIA</b>	<b>5</b>	0.0%
<b>AUSTRALIA</b>	<b>69</b>	0.6%
<b>AUSTRIA</b>	<b>5</b>	0.0%
<b>AZERBAIJAN</b>	<b>4</b>	0.0%
<b>BAHRAIN</b>	<b>11</b>	0.1%
<b>BANGLADESH</b>	<b>9</b>	0.1%
<b>BELARUS</b>	<b>1</b>	0.0%
<b>BELGIUM</b>	<b>1</b>	0.0%
<b>BOLIVIA</b>	<b>60</b>	0.5%
<b>BOSNIA AND HERZEGOVINA</b>	<b>1</b>	0.0%
<b>BOTSWANA</b>	<b>2</b>	0.0%
<b>BRAZIL</b>	<b>114</b>	0.9%
<b>BRUNEI DARUSSALAM</b>	<b>1</b>	0.0%
<b>BULGARIA</b>	<b>1</b>	0.0%
<b>BURKINA FASO</b>	<b>3</b>	0.0%
<b>CAMBODIA</b>	<b>5</b>	0.0%
<b>CAMEROON</b>	<b>35</b>	0.3%
<b>Canada</b>	<b>1</b>	0.0%
<b>CANADA</b>		
<i>CANADA</i>	<i>2</i>	
<i>CANADA Alberta</i>	<i>42</i>	
<i>CANADA British Columbia</i>	<i>96</i>	
<i>CANADA Manitoba</i>	<i>20</i>	
<i>CANADA New Brunswick</i>	<i>19</i>	
<i>CANADA Newfoundland</i>	<i>4</i>	
<i>CANADA Nova Scotia</i>	<i>12</i>	
<i>CANADA Ontario</i>	<i>104</i>	
<i>CANADA Prince Edward Island</i>	<i>3</i>	
<i>CANADA Quebec</i>	<i>32</i>	
<i>CANADA Saskatchewan</i>	<i>8</i>	
<i>CANADA Yukon Territory</i>	<i>1</i>	
<b>CANADA</b>	<b>343</b>	2.8%
<b>CAPE VERDE</b>	<b>1</b>	0.0%
<b>CAYMAN ISLANDS</b>	<b>1</b>	0.0%
<b>CHILE</b>	<b>23</b>	0.2%
<b>CHINA</b>	<b>84</b>	0.7%
<b>COLOMBIA</b>	<b>34</b>	0.3%
<b>COSTA RICA</b>	<b>29</b>	0.2%
<b>COTE D'IVOIRE</b>	<b>1</b>	0.0%
<b>CROATIA</b>	<b>6</b>	0.0%
<b>CYPRUS</b>	<b>4</b>	0.0%
<b>CZECH REPUBLIC</b>	<b>8</b>	0.1%
<b>DENMARK</b>	<b>2</b>	0.0%
<b>DOMINICAN REPUBLIC</b>	<b>15</b>	0.1%
<b>EAST TIMOR</b>	<b>1</b>	0.0%
<b>ECUADOR</b>	<b>37</b>	0.3%
<b>EGYPT</b>	<b>25</b>	0.2%
<b>EL SALVADOR</b>	<b>5</b>	0.0%
<b>ESTONIA</b>	<b>2</b>	0.0%
<b>FINLAND</b>	<b>6</b>	0.0%
<b>FRANCE</b>	<b>15</b>	0.1%
<b>GEORGIA</b>	<b>5</b>	0.0%

GERMANY	28	0.2%
GHANA	1	0.0%
GREECE	18	0.1%
GUAM	3	0.0%
GUATEMALA	19	0.2%
HAITI	13	0.1%
HONDURAS	9	0.1%
HONG KONG	13	0.1%
HONG KONG SAR CHINA	26	0.2%
HUNGARY	4	0.0%
ICELAND	3	0.0%
INDIA	29	0.2%
INDONESIA	31	0.3%
IRAN	7	0.1%
IRAN, ISLAMIC REPUBLIC OF	2	0.0%
IRAQ	18	0.1%
IRELAND	2	0.0%
ISRAEL	22	0.2%
ITALY	23	0.2%
JAMAICA	1	0.0%
JAPAN	448	3.7%
JORDAN	7	0.1%
KAZAKHSTAN	6	0.0%
KOREA, REPUBLIC OF	29	0.2%
KOSOVO (UNMIK)	2	0.0%
KUWAIT	17	0.1%
KYRGYZSTAN	2	0.0%
LAOS	11	0.1%
LATVIA	1	0.0%
LEBANON	10	0.1%
LIBYA	8	0.1%
LITHUANIA	4	0.0%
MACAO	8	0.1%
MACEDONIA	3	0.0%
MADAGASCAR	5	0.0%
MALAYSIA	20	0.2%
MALDIVES	2	0.0%
MALTA	1	0.0%
MARSHALL ISLANDS	4	0.0%
MARTINIQUE	1	0.0%
MAURITIUS	1	0.0%
MEXICO	191	1.6%
MICRONESIA, FED STATES OF	1	0.0%
MOLDOVA, REPUBLIC OF	4	0.0%
MONGOLIA	8	0.1%
MONTENEGRO	1	0.0%
MOROCCO	32	0.3%
MOZAMBIOUE	1	0.0%
MYANMAR	1	0.0%
NAMIBIA	1	0.0%
NEPAL	6	0.0%
NETHERLANDS	7	0.1%
NEW ZEALAND	12	0.1%
NICARAGUA	6	0.0%
NIGER	1	0.0%
NIGERIA	1	0.0%
NORWAY	3	0.0%
OMAN	14	0.1%
PAKISTAN	5	0.0%
PALAU	2	0.0%
PALESTINIAN TERRITORY	1	0.0%

<b>PANAMA</b>		<b>40</b>	<b>0.3%</b>
<b>PARAGUAY</b>		<b>7</b>	<b>0.1%</b>
<b>PEOPLES REP OF CHINA</b>		<b>49</b>	<b>0.4%</b>
<b>PERU</b>		<b>89</b>	<b>0.7%</b>
<b>PHILIPPINES</b>		<b>50</b>	<b>0.4%</b>
<b>POLAND</b>		<b>11</b>	<b>0.1%</b>
<b>PORTUGAL</b>		<b>1</b>	<b>0.0%</b>
<b>OATAR</b>		<b>26</b>	<b>0.2%</b>
<b>ROMANIA</b>		<b>1</b>	<b>0.0%</b>
<b>RUSSIA</b>		<b>26</b>	<b>0.2%</b>
<b>RUSSIAN FEDERATION</b>		<b>5</b>	<b>0.0%</b>
<b>RWANDA</b>		<b>3</b>	<b>0.0%</b>
<b>SAO TOME AND PRINCIPE</b>		<b>1</b>	<b>0.0%</b>
<b>SAUDI ARABIA</b>		<b>39</b>	<b>0.3%</b>
<b>SENEGAL</b>		<b>8</b>	<b>0.1%</b>
<b>SERBIA</b>		<b>4</b>	<b>0.0%</b>
<b>SIERRA LEONE</b>		<b>1</b>	<b>0.0%</b>
<b>SINGAPORE</b>		<b>17</b>	<b>0.1%</b>
<b>SLOVAKIA</b>		<b>1</b>	<b>0.0%</b>
<b>SOUTH AFRICA</b>		<b>7</b>	<b>0.1%</b>
<b>SOUTH KOREA</b>		<b>55</b>	<b>0.4%</b>
<b>SPAIN</b>		<b>21</b>	<b>0.2%</b>
<b>SRI LANKA</b>		<b>2</b>	<b>0.0%</b>
<b>SUDAN</b>		<b>5</b>	<b>0.0%</b>
<b>SWAZILAND</b>		<b>1</b>	<b>0.0%</b>
<b>SWEDEN</b>		<b>8</b>	<b>0.1%</b>
<b>SWITZERLAND</b>		<b>7</b>	<b>0.1%</b>
<b>SYRIAN ARAB REPUBLIC</b>		<b>3</b>	<b>0.0%</b>
<b>TAIWAN</b>		<b>30</b>	<b>0.2%</b>
<b>TAIWAN ROC</b>		<b>42</b>	<b>0.3%</b>
<b>TAIWAN, PROVINCE OF CHINA</b>		<b>2</b>	<b>0.0%</b>
<b>TAJKISTAN</b>		<b>3</b>	<b>0.0%</b>
<b>THAILAND</b>		<b>36</b>	<b>0.3%</b>
<b>TOGO</b>		<b>1</b>	<b>0.0%</b>
<b>TRINIDAD AND TOBAGO</b>		<b>1</b>	<b>0.0%</b>
<b>TUNISIA</b>		<b>6</b>	<b>0.0%</b>
<b>TURKEY</b>		<b>47</b>	<b>0.4%</b>
<b>UGANDA</b>		<b>1</b>	<b>0.0%</b>
<b>UKRAINE</b>		<b>14</b>	<b>0.1%</b>
<b>UNITED ARAB EMIRATES</b>		<b>55</b>	<b>0.4%</b>
<b>UNITED KINGDOM</b>		<b>51</b>	<b>0.4%</b>
<b>UNITED STATES OF AMERICA</b>		<b>2</b>	<b>0.0%</b>
<b>URUGUAY</b>		<b>21</b>	<b>0.2%</b>
<b>US MINOR OUTLYING ISLANDS</b>		<b>4</b>	<b>0.0%</b>
<b>USA</b>			
<i>USA</i>		<i>46</i>	
<i>USA</i>	<i>Alabama</i>	<i>72</i>	
<i>USA</i>	<i>Alaska</i>	<i>27</i>	
<i>USA</i>	<i>American Embassy</i>	<i>23</i>	
<i>USA</i>	<i>Arizona</i>	<i>190</i>	
<i>USA</i>	<i>Arkansas</i>	<i>72</i>	
<i>USA</i>	<i>Armed Forces</i>	<i>11</i>	
<i>USA</i>	<i>Armed Frces Americas</i>	<i>1</i>	
<i>USA</i>	<i>British Columbia</i>	<i>1</i>	
<i>USA</i>	<i>California</i>	<i>863</i>	
<i>USA</i>	<i>Canal Zone</i>	<i>1</i>	
<i>USA</i>	<i>Colorado</i>	<i>181</i>	
<i>USA</i>	<i>Connecticut</i>	<i>204</i>	
<i>USA</i>	<i>Delaware</i>	<i>26</i>	
<i>USA</i>	<i>District of Columbia</i>	<i>145</i>	
<i>USA</i>	<i>Florida</i>	<i>339</i>	

USA	Georgia	217	
USA	Guam	6	
USA	Hawaii	78	
USA	Idaho	29	
USA	Illinois	315	
USA	Indiana	154	
USA	Iowa	107	
USA	Kansas	96	
USA	Kentucky	66	
USA	Louisiana	45	
USA	Maine	56	
USA	Manitoba	2	
USA	Marshall Islands	1	
USA	Maryland	305	
USA	Massachusetts	822	
USA	Michigan	201	
USA	Minnesota	183	
USA	Mississippi	50	
USA	Missouri	155	
USA	Montana	14	
USA	N Mariana Islands	1	
USA	Nebraska	48	
USA	Nevada	50	
USA	New Hampshire	107	
USA	New Jersey	272	
USA	New Mexico	50	
USA	New York	733	
USA	North Carolina	143	
USA	North Dakota	22	
USA	Ohio	211	
USA	Oklahoma	74	
USA	Ontario	4	
USA	Oregon	177	
USA	Pennsylvania	354	
USA	Puerto Rico	48	
USA	Rhode Island	116	
USA	South Carolina	52	
USA	South Dakota	10	
USA	Tennessee	94	
USA	Texas	428	
USA	Utah	109	
USA	Vermont	100	
USA	Virginia	371	
USA	Washington	277	
USA	West Virginia	23	
USA	Wisconsin	188	
USA	Wyoming	18	
<b>USA</b>		<b>9,184</b>	<b>75.1%</b>
<b>UZBEKISTAN</b>		<b>2</b>	<b>0.0%</b>
<b>VENEZUELA</b>		<b>16</b>	<b>0.1%</b>
<b>VIET NAM</b>		<b>2</b>	<b>0.0%</b>
<b>VIETNAM</b>		<b>14</b>	<b>0.1%</b>
<b>VIRGIN ISLANDS, U.S.</b>		<b>6</b>	<b>0.0%</b>
<b>YEMEN</b>		<b>2</b>	<b>0.0%</b>
<b>Grand Total:</b>		<b>12,225</b>	

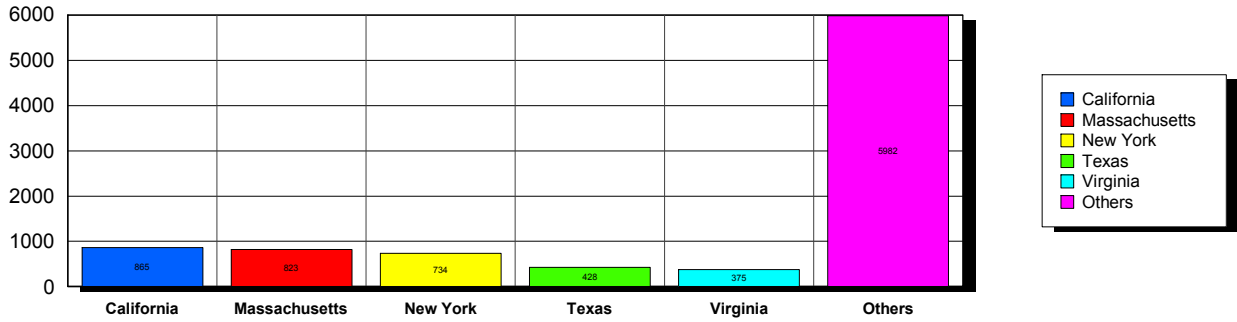
156 distinct countries represented.

10/6/2010

Membership counts by country for members paid through 09/30/2010 or later.

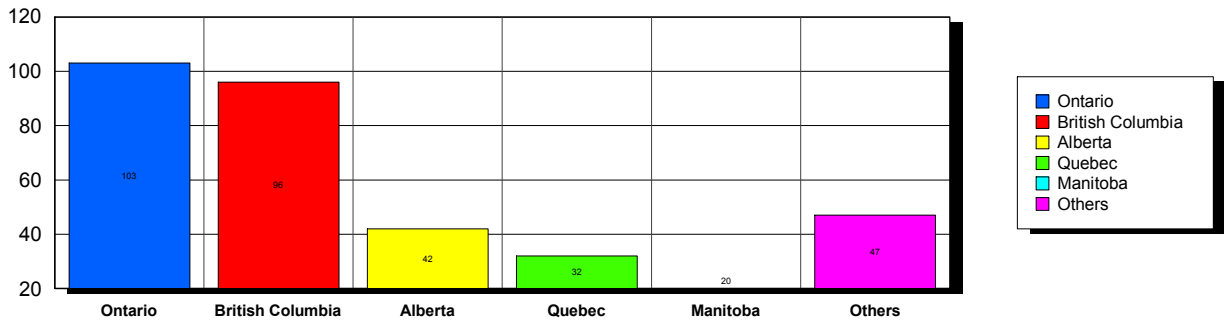
USA

**Top 5 States per Country**

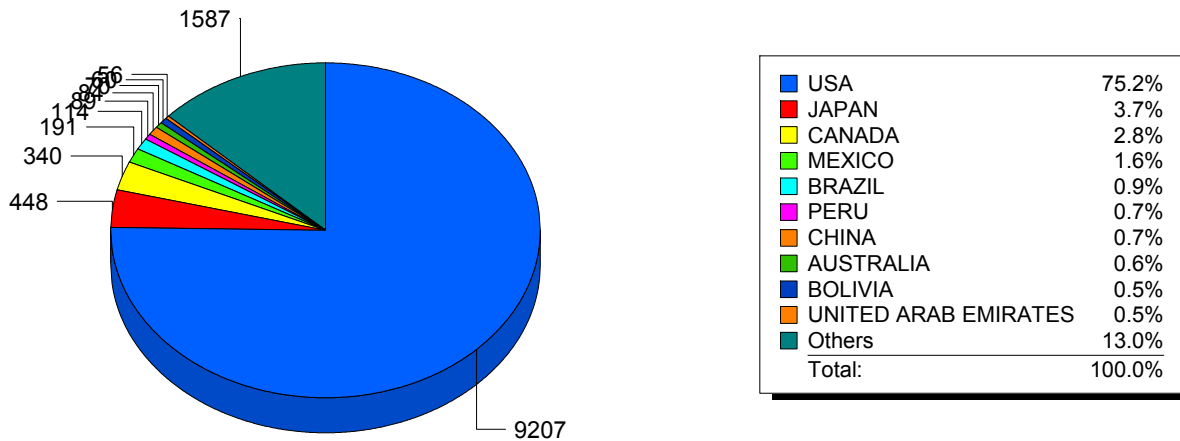


CANADA

**Top 5 States per Country**



**Top 10 Countries**



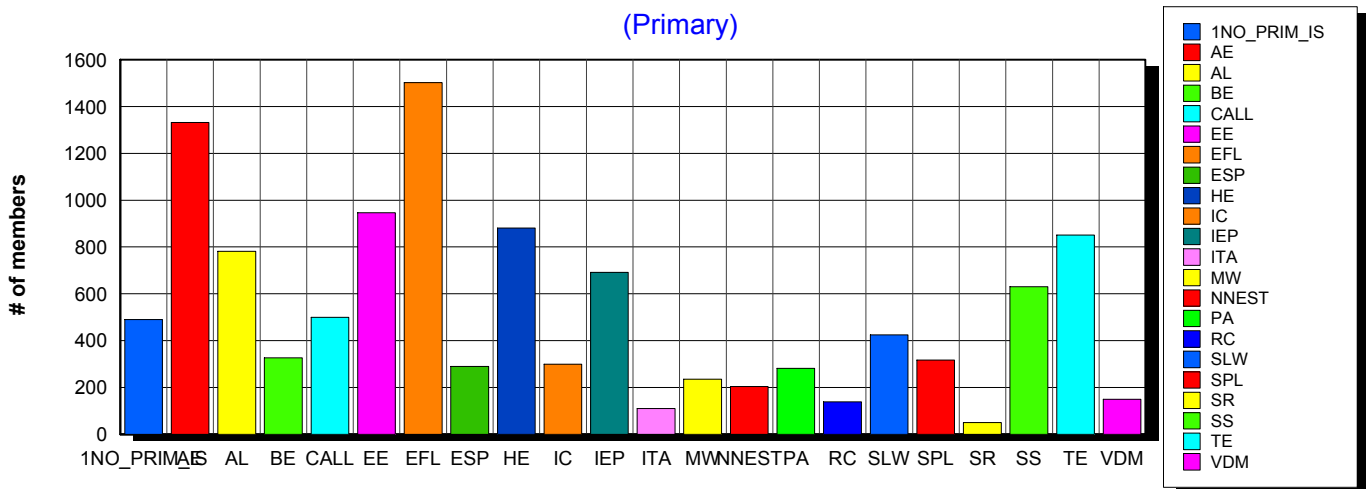
10/6/2010 **Basic statistics on Primary vs. other memberships in interest sections. For members paid through 9/30/2010 or later.**

			<i>Primary versus other</i>	
No Primary Interest Section	1.2%	500	490	10
Adult Education	7.3%	2,960	1,332	1,628
Applied Linguistics	6.1%	2,461	781	1,680
Bilingual Education	4.0%	1,627	326	1,301
Computer-Assisted Language Learning	5.3%	2,153	499	1,654
Elementary Education	4.9%	1,982	946	1,036
English as a Foreign Language	8.2%	3,321	1,502	1,819
English for Specific Purposes	4.3%	1,763	289	1,474
Higher Education	6.1%	2,462	881	1,581
Intercultural Communication	4.7%	1,912	299	1,613
Intensive English Programs	5.3%	2,150	692	1,458
International Teaching Assistants	2.6%	1,073	110	963
Materials Writers	3.5%	1,410	235	1,175
Nonnative English Speakers in TESOL	3.1%	1,258	204	1,054
Program Administration	3.4%	1,388	282	1,106
Refugee Concerns	2.4%	993	139	854
Second Language Writing	5.8%	2,344	425	1,919
Speech, Pronunciation, and Listening	5.1%	2,072	317	1,755
Social Responsibility	2.0%	820	50	770
Secondary Schools	4.1%	1,651	630	1,021
Teacher Education	7.1%	2,896	851	2,045
Video & Digital Media	3.6%	1,457	150	1,307
<i>11,460 distinct members</i>		<b>Total # of IS memberships</b>	<b>40,653</b>	<b>11,430</b>
			<b>29,223</b>	

The total count is the number of IS memberships total and may either be LESS or MORE than the actual number of individual members of TESOL. Due to open access to Interest Sections, these numbers may fluctuate considerably each month. For instance, one member may have selected four interest sections, while some members may belong to none.

### Interest Sections

(Primary)

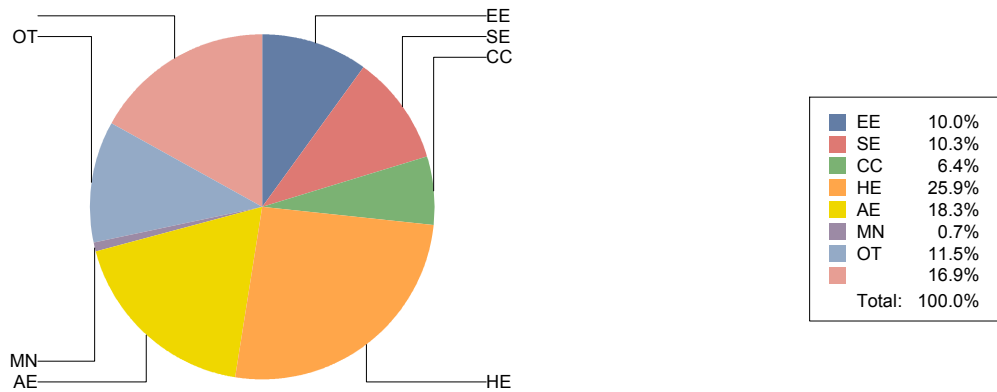


## Basic Statistics on Area of Work (Members paid through >= 9/30/2010)

Elementary Education	EE	1,222	10.0%
Secondary Education	SE	1,256	10.3%
Community/2yr College	CC	787	6.4%
Postsecondary Education	HE	3,157	25.9%
Adult Education	AE	2,229	18.3%
Mainstream	MN	84	0.7%
Other	OT	1,406	11.5%
		<b>2,069</b>	<b>16.9%</b>
		<b>12,210</b>	

Only members who selected an area of work are included on this report. Other members may not have responded to this question and are excluded from the count.

### Areas of Work



(Blanks indicate no response)



## Statistics on Areas of Interest (Members paid through >= 9/30/2010)

<u>CODE</u>	<u>DESCRIPTION</u>	<u>TOTAL*</u>	<u>% of TOTAL*</u>
EFL	English as a foreign language	3,042	5%
CURRICULUM	Materials development/Curriculum	2,794	4%
TE	Teacher education	2,740	4%
SLA	Second language acquisition	2,724	4%
AL	Applied linguistics	2,562	4%
IC	Multiculturalism/intercultural communications	2,532	4%
AE	Adult education	2,481	4%
WRITING	Writing/composition	2,381	4%
CALL	Technology in education	2,370	4%
CONTENT	Content-based instruction	2,273	4%
HE	Higher education	2,170	3%
PROFDEV	Professional development	2,130	3%
READING	Reading/literacy	2,074	3%
IEP	Intensive English programs	2,022	3%
SP	Speaking/pronunciation	1,938	3%
ASSESS	Assessment/testing	1,874	3%
GRAMMAR	Grammar	1,828	3%
ESP	English for specific purposes	1,722	3%
BE	Bilingual education	1,597	2%
RS	Research	1,553	2%
EE	Elementary/primary education	1,300	2%
DISTANCE	Distance learning/Online Education	1,268	2%
PA	Program administration	1,246	2%
VOCAB	Vocabulary/Lexicon	1,209	2%
SS	Secondary education	1,155	2%
SOCIAL	Social/global/political concerns	1,105	2%
WORKPLACE	Workplace English instruction/Business English	1,040	2%
ISKILL	Integrated Skills	989	2%
LISTEN	Listening	986	2%
VI	Video and digital media	974	2%
COMMCOLL	Community college/technical ed	873	1%
LIT	Literature	769	1%
RC	Refugee concerns	766	1%
LINGUISTICS	Theoretical Linguistics	745	1%
STANDARDS	Standards	744	1%
ITA	International teaching assistants	713	1%
FAMILY	Community/family outreach	663	1%
LDSN	Learning Disorders/Special Needs	548	1%
EMPLOYMENT	Employment issues/Certification	541	1%
PUBLICPOLICY	Public policy	500	1%
NNES	NNES/NES issues	460	1%
MAINSTREAMING	Mainstreaming	458	1%
ARTS	Arts/Media/Science/Math/Social Science	379	1%
ACCRED	Accreditation	327	1%
STYLISTICS	Stylistics	131	0%

Sorted in order of prevalence.

*\* Note: Members are encouraged to choose multiple areas of interest and some members do not choose any areas of interest. The total number of distinct members (8,840) represented in this report is less than the total number of active members as indicated elsewhere in this report.*

*Areas of interest are separate from official TESOL interest sections. Areas of interest represent distinct areas in which a member may be interested, rather than official entities in which a member is involved.*

*Areas of interest which have a very low count may be recent additions to the AOI list, or may reflect overall trends in membership.*

## Statistics on Areas of Expertise (Members paid through >= 9/30/2010)

<u>CODE</u>	<u>DESCRIPTION</u>	<u>TOTAL*</u>	<u>% of TOTAL*</u>
EFL	English as a foreign language	1,880	7%
AE	Adult education	1,571	6%
CURRICULUM	Materials development/Curriculum	1,333	5%
WRITING	Writing/composition	1,216	4%
AL	Applied linguistics	1,197	4%
TE	Teacher education	1,144	4%
SLA	Second language acquisition	1,117	4%
IEP	Intensive English programs	1,077	4%
HE	Higher education	1,037	4%
CONTENT	Content-based instruction	1,005	4%
GRAMMAR	Grammar	930	3%
IC	Multiculturalism/intercultural communications	871	3%
EE	Elementary/primary education	867	3%
READING	Reading/literacy	775	3%
CALL	Technology in education	752	3%
ESP	English for specific purposes	751	3%
PROFDEV	Professional development	746	3%
SP	Speaking/pronunciation	712	3%
ASSESS	Assessment/testing	684	3%
PA	Program administration	634	2%
SS	Secondary education	573	2%
BE	Bilingual education	569	2%
ISKILL	Integrated Skills	511	2%
COMMCOLL	Community college/technical ed	493	2%
WORKPLACE	Workplace English instruction/Business English	438	2%
DISTANCE	Distance learning/Online Education	425	2%
RS	Research	397	1%
LISTEN	Listening	363	1%
LIT	Literature	349	1%
VOCAB	Vocabulary/Lexicon	331	1%
SOCIAL	Social/global/political concerns	268	1%
FAMILY	Community/family outreach	209	1%
VI	Video and digital media	208	1%
ARTS	Arts/Media/Science/Math/Social Science	195	1%
ITA	International teaching assistants	195	1%
NNES	NNES/NES issues	188	1%
STANDARDS	Standards	172	1%
RC	Refugee concerns	163	1%
ACCRED	Accreditation	158	1%
LINGUISTICS	Theoretical Linguistics	158	1%
MAINSTREAMING	Mainstreaming	154	1%
LDSN	Learning Disorders/Special Needs	151	1%
EMPLOYMENT	Employment issues/Certification	120	0%
PUBLICPOLICY	Public policy	84	0%
STYLISTICS	Stylistics	27	0%

Sorted in order of prevalence.

*\* Note: Members are encouraged to choose multiple areas of expertise and some members do not choose any areas of expertise. The total number of distinct members (6,760) represented in this report is less than the total number of active members as indicated elsewhere in this report.*

*Areas of Expertise are separate from official TESOL interest sections or Areas of Interest. Areas of expertise represent distinct areas in which a member may be experienced in, rather than official entities in which a member is involved.*

*Areas of interest which have a very low count may be recent additions to the AOI list, or may reflect overall trends in membership.*