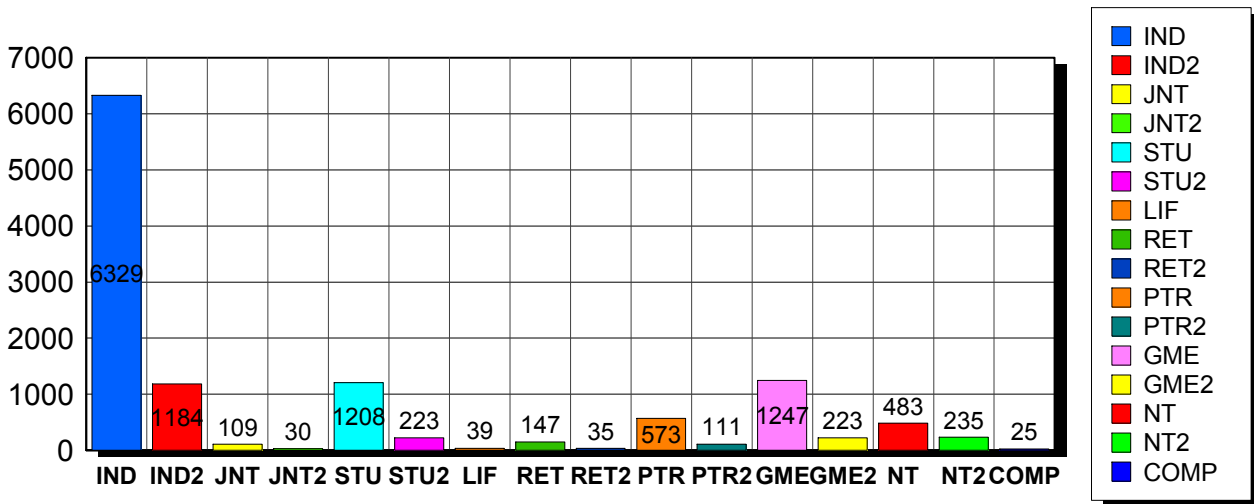


11/3/2010

Membership Statistics: Grand totals for basic membership, by member type

		<u># Memberships</u>	<u># Members</u>
IND	BASIC	6,329	6,329
IND2	BASIC	1,184	1,184
JNT	BASIC	109	218
JNT2	BASIC	30	60
STU	BASIC	1,208	1,208
STU2	BASIC	223	223
LIF	BASIC	39	39
RET	BASIC	147	147
RET2	BASIC	35	35
PTR	BASIC	573	573
PTR2	BASIC	111	111
GME	BASIC	1,247	1,247
GME2	BASIC	223	223
NT	BASIC	483	483
NT2	BASIC	235	235
COMP	BASIC	25	25
Grand Total:		12,201	12,340

Member Types



Note: in all general statistic reports, joint household memberships are treated as "one" member EXCEPT in the second column of this report, where joints are counted as two people, providing the most accurate count of the number of TESOL members.

This report is based on members paid through 10/31/2010 or later.

Country/State/Province	Total	
AFGHANISTAN	1	0.0%
ALBANIA	9	0.1%
ALGERIA	20	0.2%
ANGOLA	2	0.0%
ARGENTINA	31	0.3%
ARMENIA	5	0.0%
AUSTRALIA	69	0.6%
AUSTRIA	3	0.0%
AZERBAIJAN	4	0.0%
BAHRAIN	9	0.1%
BANGLADESH	9	0.1%
BELARUS	1	0.0%
BELGIUM	1	0.0%
BOLIVIA	60	0.5%
BOSNIA AND HERZEGOVINA	1	0.0%
BOTSWANA	2	0.0%
BRAZIL	113	0.9%
BRUNEI DARUSSALAM	1	0.0%
BULGARIA	1	0.0%
BURKINA FASO	3	0.0%
CAMBODIA	5	0.0%
CAMEROON	35	0.3%
Canada	1	0.0%
CANADA		
<i>CANADA</i>	<i>2</i>	
<i>CANADA Alberta</i>	<i>40</i>	
<i>CANADA British Columbia</i>	<i>95</i>	
<i>CANADA Manitoba</i>	<i>20</i>	
<i>CANADA New Brunswick</i>	<i>19</i>	
<i>CANADA Newfoundland</i>	<i>4</i>	
<i>CANADA Nova Scotia</i>	<i>13</i>	
<i>CANADA Ontario</i>	<i>101</i>	
<i>CANADA Prince Edward Island</i>	<i>3</i>	
<i>CANADA Quebec</i>	<i>30</i>	
<i>CANADA Saskatchewan</i>	<i>9</i>	
<i>CANADA Yukon Territory</i>	<i>1</i>	
CANADA	337	2.8%
CAPE VERDE	1	0.0%
CAYMAN ISLANDS	1	0.0%
CHILE	23	0.2%
CHINA	85	0.7%
COLOMBIA	34	0.3%
COSTA RICA	29	0.2%
COTE D'IVOIRE	2	0.0%
CROATIA	6	0.0%
CYPRUS	4	0.0%
CZECH REPUBLIC	8	0.1%
DENMARK	2	0.0%
DOMINICAN REPUBLIC	15	0.1%
EAST TIMOR	1	0.0%
ECUADOR	37	0.3%
EGYPT	26	0.2%
EL SALVADOR	5	0.0%
ESTONIA	1	0.0%
FINLAND	6	0.0%
FRANCE	15	0.1%
GEORGIA	5	0.0%

GERMANY	26	0.2%
GHANA	1	0.0%
GREECE	17	0.1%
GUAM	3	0.0%
GUATEMALA	19	0.2%
HAITI	13	0.1%
HONDURAS	9	0.1%
HONG KONG	14	0.1%
HONG KONG SAR CHINA	26	0.2%
HUNGARY	4	0.0%
ICELAND	3	0.0%
INDIA	29	0.2%
INDONESIA	23	0.2%
IRAN	6	0.0%
IRAN, ISLAMIC REPUBLIC OF	2	0.0%
IRAQ	17	0.1%
IRELAND	4	0.0%
ISRAEL	22	0.2%
ITALY	23	0.2%
JAMAICA	1	0.0%
JAPAN	451	3.7%
JORDAN	8	0.1%
KAZAKHSTAN	6	0.0%
KOREA, REPUBLIC OF	29	0.2%
KOSOVO (UNMIK)	2	0.0%
KUWAIT	20	0.2%
KYRGYZSTAN	2	0.0%
LAOS	11	0.1%
LATVIA	1	0.0%
LEBANON	10	0.1%
LIBYA	6	0.0%
LITHUANIA	4	0.0%
MACAO	9	0.1%
MACEDONIA	3	0.0%
MADAGASCAR	5	0.0%
MALAYSIA	21	0.2%
MALDIVES	2	0.0%
MALTA	1	0.0%
MARSHALL ISLANDS	6	0.0%
MARTINIQUE	1	0.0%
MAURITIUS	1	0.0%
MEXICO	189	1.5%
MICRONESIA, FED STATES OF	1	0.0%
MOLDOVA, REPUBLIC OF	4	0.0%
MONGOLIA	8	0.1%
MONTENEGRO	1	0.0%
MOROCCO	31	0.3%
MOZAMBIOUE	1	0.0%
MYANMAR	1	0.0%
NAMIBIA	1	0.0%
NEPAL	6	0.0%
NETHERLANDS	7	0.1%
NEW ZEALAND	12	0.1%
NICARAGUA	5	0.0%
NIGER	1	0.0%
NIGERIA	1	0.0%
NORWAY	3	0.0%
OMAN	13	0.1%
PAKISTAN	5	0.0%
PALAU	2	0.0%
PALESTINIAN TERRITORY	2	0.0%

PANAMA	36	0.3%
PARAGUAY	6	0.0%
PEOPLES REP OF CHINA	49	0.4%
PERU	91	0.7%
PHILIPPINES	48	0.4%
POLAND	11	0.1%
PORTUGAL	1	0.0%
OATAR	26	0.2%
ROMANIA	1	0.0%
RUSSIA	35	0.3%
RUSSIAN FEDERATION	7	0.1%
RWANDA	2	0.0%
SAO TOME AND PRINCIPE	1	0.0%
SAUDI ARABIA	41	0.3%
SENEGAL	9	0.1%
SERBIA	5	0.0%
SIERRA LEONE	1	0.0%
SINGAPORE	17	0.1%
SLOVAKIA	1	0.0%
SOUTH AFRICA	5	0.0%
SOUTH KOREA	56	0.5%
SPAIN	22	0.2%
SRI LANKA	2	0.0%
SUDAN	5	0.0%
SWAZILAND	1	0.0%
SWEDEN	8	0.1%
SWITZERLAND	7	0.1%
SYRIAN ARAB REPUBLIC	3	0.0%
TAIWAN	30	0.2%
TAIWAN ROC	41	0.3%
TAIWAN, PROVINCE OF CHINA	1	0.0%
TAJKISTAN	3	0.0%
THAILAND	37	0.3%
TOGO	1	0.0%
TRINIDAD AND TOBAGO	2	0.0%
TUNISIA	6	0.0%
TURKEY	46	0.4%
UGANDA	1	0.0%
UKRAINE	14	0.1%
UNITED ARAB EMIRATES	53	0.4%
UNITED KINGDOM	51	0.4%
UNITED STATES OF AMERICA	2	0.0%
URUGUAY	21	0.2%
US MINOR OUTLYING ISLANDS	4	0.0%
USA		
USA	47	
USA	Alabama	74
USA	Alaska	27
USA	American Embassy	22
USA	Arizona	191
USA	Arkansas	73
USA	Armed Forces	11
USA	Armed Frces Americas	1
USA	British Columbia	1
USA	California	873
USA	Canal Zone	1
USA	Colorado	183
USA	Connecticut	202
USA	Delaware	25
USA	District of Columbia	138
USA	Florida	340

USA	Georgia	220	
USA	Guam	6	
USA	Hawaii	76	
USA	Idaho	32	
USA	Illinois	326	
USA	Indiana	155	
USA	Iowa	106	
USA	Kansas	95	
USA	Kentucky	68	
USA	Louisiana	46	
USA	Maine	57	
USA	Manitoba	2	
USA	Marshall Islands	1	
USA	Maryland	300	
USA	Massachusetts	789	
USA	Michigan	205	
USA	Minnesota	183	
USA	Mississippi	54	
USA	Missouri	153	
USA	Montana	14	
USA	N Mariana Islands	1	
USA	Nebraska	47	
USA	Nevada	49	
USA	New Hampshire	106	
USA	New Jersey	270	
USA	New Mexico	54	
USA	New York	731	
USA	North Carolina	146	
USA	North Dakota	21	
USA	Ohio	208	
USA	Oklahoma	71	
USA	Ontario	4	
USA	Oregon	173	
USA	Pennsylvania	351	
USA	Puerto Rico	51	
USA	Rhode Island	113	
USA	South Carolina	53	
USA	South Dakota	8	
USA	Tennessee	94	
USA	Texas	436	
USA	Utah	110	
USA	Vermont	99	
USA	Virginia	366	
USA	Washington	273	
USA	West Virginia	24	
USA	Wisconsin	188	
USA	Wyoming	20	
USA		9,164	75.1%
UZBEKISTAN		3	0.0%
VENEZUELA		17	0.1%
VIET NAM		2	0.0%
VIETNAM		13	0.1%
VIRGIN ISLANDS, U.S.		6	0.0%
YEMEN		2	0.0%
Grand Total:		12,201	

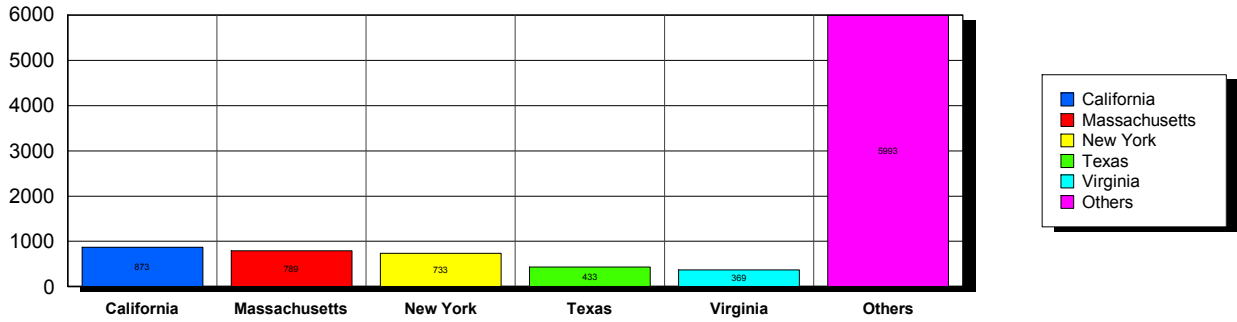
156 distinct countries represented.

11/3/2010

Membership counts by country for members paid through 10/31/2010 or later.

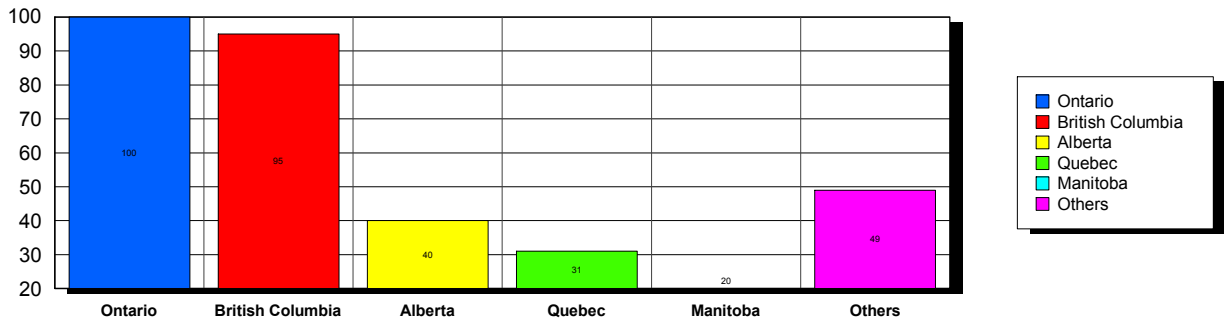
USA

Top 5 States per Country

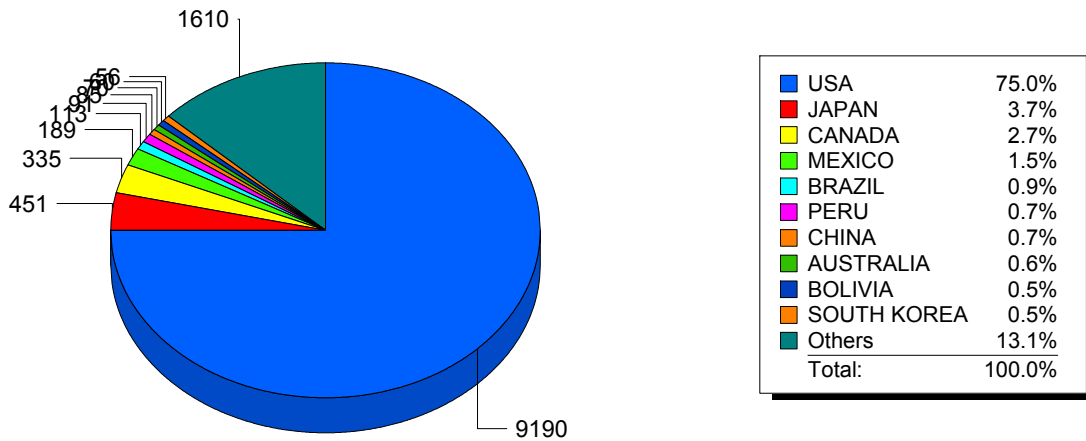


CANADA

Top 5 States per Country



Top 10 Countries



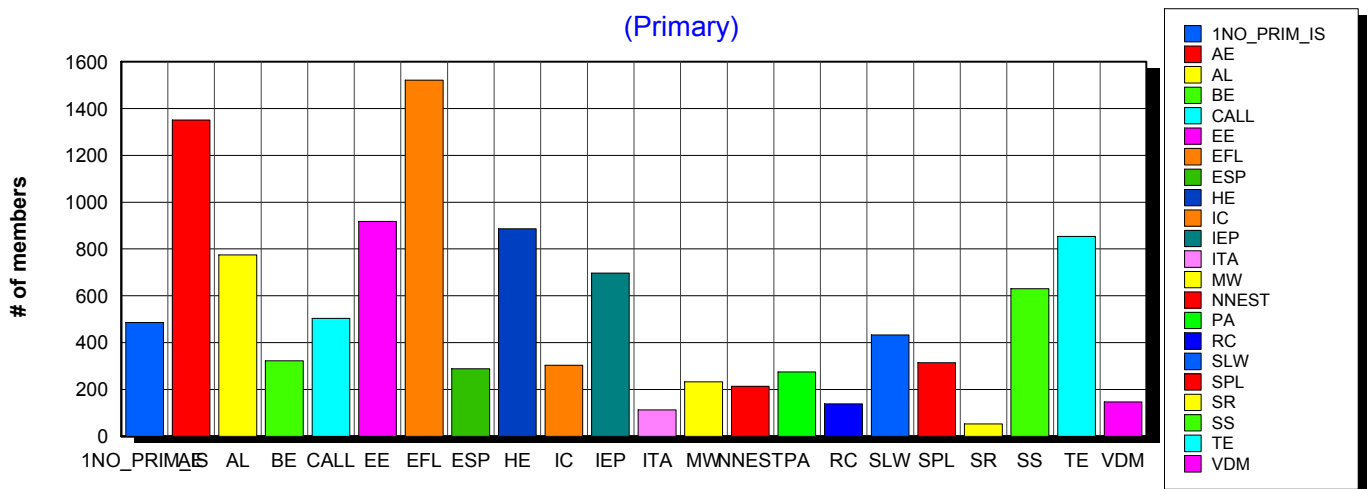
11/3/2010 **Basic statistics on Primary vs. other memberships in interest sections. For members paid through 10/31/2010 or later.**

			<i>Primary versus other</i>		
No Primary Interest Section	1.2%	496	486	10	
Adult Education	7.3%	3,002	1,351	1,651	
Applied Linguistics	6.0%	2,469	775	1,694	
Bilingual Education	4.0%	1,634	323	1,311	
Computer-Assisted Language Learning	5.3%	2,160	504	1,656	
Elementary Education	4.8%	1,947	918	1,029	
English as a Foreign Language	8.2%	3,349	1,521	1,828	
English for Specific Purposes	4.4%	1,789	288	1,501	
Higher Education	6.0%	2,464	886	1,578	
Intercultural Communication	4.7%	1,930	303	1,627	
Intensive English Programs	5.3%	2,176	697	1,479	
International Teaching Assistants	2.6%	1,079	112	967	
Materials Writers	3.5%	1,431	232	1,199	
Nonnative English Speakers in TESOL	3.1%	1,278	213	1,065	
Program Administration	3.4%	1,379	275	1,104	
Refugee Concerns	2.4%	992	138	854	
Second Language Writing	5.8%	2,366	433	1,933	
Speech, Pronunciation, and Listening	5.1%	2,090	314	1,776	
Social Responsibility	2.0%	827	52	775	
Secondary Schools	4.1%	1,660	630	1,030	
Teacher Education	7.1%	2,916	854	2,062	
Video & Digital Media	3.6%	1,460	146	1,314	
<i>11,481 distinct members</i>		Total # of IS memberships	40,894	11,451	29,443

The total count is the number of IS memberships total and may either be LESS or MORE than the actual number of individual members of TESOL. Due to open access to Interest Sections, these numbers may fluctuate considerably each month. For instance, one member may have selected four interest sections, while some members may belong to none.

Interest Sections

(Primary)

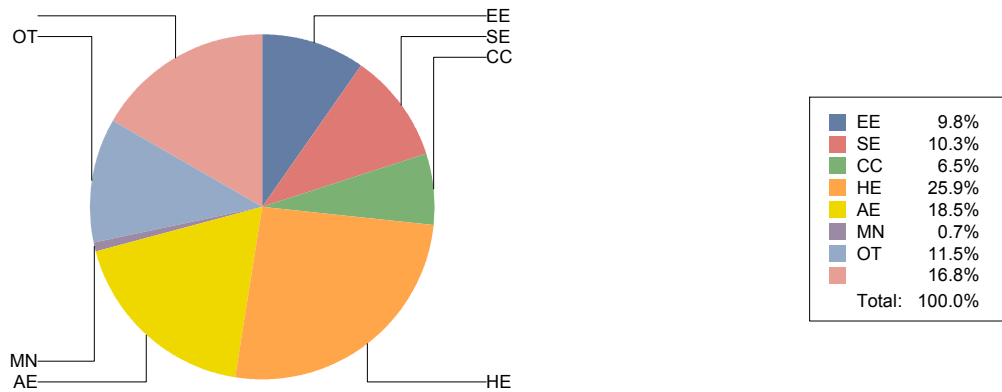


Basic Statistics on Area of Work (Members paid through >= 10/31/2010)

Elementary Education	EE	1,192	9.8%
Secondary Education	SE	1,254	10.3%
Community/2yr College	CC	790	6.5%
Postsecondary Education	HE	3,149	25.9%
Adult Education	AE	2,250	18.5%
Mainstream	MN	91	0.7%
Other	OT	1,400	11.5%
		2,042	16.8%
		12,168	

Only members who selected an area of work are included on this report. Other members may not have responded to this question and are excluded from the count.

Areas of Work



Statistics on Areas of Interest (Members paid through >= 10/31/2010)

<u>CODE</u>	<u>DESCRIPTION</u>	<u>TOTAL*</u>	<u>% of TOTAL*</u>
EFL	English as a foreign language	3,029	5%
CURRICULUM	Materials development/Curriculum	2,787	4%
TE	Teacher education	2,714	4%
SLA	Second language acquisition	2,705	4%
AL	Applied linguistics	2,545	4%
IC	Multiculturalism/intercultural communications	2,514	4%
AE	Adult education	2,469	4%
WRITING	Writing/composition	2,385	4%
CALL	Technology in education	2,345	4%
CONTENT	Content-based instruction	2,262	4%
HE	Higher education	2,151	3%
PROFDEV	Professional development	2,124	3%
READING	Reading/literacy	2,059	3%
IEP	Intensive English programs	2,026	3%
SP	Speaking/pronunciation	1,912	3%
ASSESS	Assessment/testing	1,861	3%
GRAMMAR	Grammar	1,820	3%
ESP	English for specific purposes	1,706	3%
BE	Bilingual education	1,582	2%
RS	Research	1,538	2%
EE	Elementary/primary education	1,280	2%
DISTANCE	Distance learning/Online Education	1,264	2%
PA	Program administration	1,241	2%
VOCAB	Vocabulary/Lexicon	1,211	2%
SS	Secondary education	1,156	2%
SOCIAL	Social/global/political concerns	1,097	2%
WORKPLACE	Workplace English instruction/Business English	1,038	2%
ISKILL	Integrated Skills	994	2%
LISTEN	Listening	984	2%
VI	Video and digital media	980	2%
COMMCOLL	Community college/technical ed	872	1%
RC	Refugee concerns	774	1%
LIT	Literature	752	1%
STANDARDS	Standards	742	1%
LINGUISTICS	Theoretical Linguistics	736	1%
ITA	International teaching assistants	712	1%
FAMILY	Community/family outreach	660	1%
EMPLOYMENT	Employment issues/Certification	532	1%
LDSN	Learning Disorders/Special Needs	528	1%
PUBLICPOLICY	Public policy	493	1%
MAINSTREAMING	Mainstreaming	464	1%
NNES	NNES/NES issues	457	1%
ARTS	Arts/Media/Science/Math/Social Science	367	1%
ACCRED	Accreditation	328	1%
STYLISTICS	Stylistics	133	0%

Sorted in order of prevalence.

** Note: Members are encouraged to choose multiple areas of interest and some members do not choose any areas of interest. The total number of distinct members (8,826) represented in this report is less than the total number of active members as indicated elsewhere in this report.*

Areas of interest are separate from official TESOL interest sections. Areas of interest represent distinct areas in which a member may be interested, rather than official entities in which a member is involved.

Areas of interest which have a very low count may be recent additions to the AOI list, or may reflect overall trends in membership.

Statistics on Areas of Expertise (Members paid through >= 10/31/2010)

<u>CODE</u>	<u>DESCRIPTION</u>	<u>TOTAL*</u>	<u>% of TOTAL*</u>
EFL	English as a foreign language	1,890	7%
AE	Adult education	1,575	6%
CURRICULUM	Materials development/Curriculum	1,343	5%
WRITING	Writing/composition	1,233	5%
AL	Applied linguistics	1,211	4%
TE	Teacher education	1,142	4%
SLA	Second language acquisition	1,107	4%
IEP	Intensive English programs	1,078	4%
HE	Higher education	1,041	4%
CONTENT	Content-based instruction	1,007	4%
GRAMMAR	Grammar	930	3%
IC	Multiculturalism/intercultural communications	878	3%
EE	Elementary/primary education	845	3%
READING	Reading/literacy	774	3%
ESP	English for specific purposes	755	3%
PROFDEV	Professional development	752	3%
CALL	Technology in education	749	3%
SP	Speaking/pronunciation	715	3%
ASSESS	Assessment/testing	677	2%
PA	Program administration	630	2%
BE	Bilingual education	576	2%
SS	Secondary education	576	2%
ISKILL	Integrated Skills	509	2%
COMMCOLL	Community college/technical ed	499	2%
WORKPLACE	Workplace English instruction/Business English	443	2%
DISTANCE	Distance learning/Online Education	433	2%
RS	Research	398	1%
LISTEN	Listening	366	1%
LIT	Literature	347	1%
VOCAB	Vocabulary/Lexicon	329	1%
SOCIAL	Social/global/political concerns	276	1%
VI	Video and digital media	211	1%
FAMILY	Community/family outreach	205	1%
ITA	International teaching assistants	195	1%
ARTS	Arts/Media/Science/Math/Social Science	194	1%
NNES	NNES/NES issues	188	1%
STANDARDS	Standards	173	1%
RC	Refugee concerns	163	1%
ACCRED	Accreditation	159	1%
LINGUISTICS	Theoretical Linguistics	159	1%
MAINSTREAMING	Mainstreaming	153	1%
LDSN	Learning Disorders/Special Needs	150	1%
EMPLOYMENT	Employment issues/Certification	117	0%
PUBLICPOLICY	Public policy	85	0%
STYLISTICS	Stylistics	26	0%

Sorted in order of prevalence.

** Note: Members are encouraged to choose multiple areas of expertise and some members do not choose any areas of expertise. The total number of distinct members (6,775) represented in this report is less than the total number of active members as indicated elsewhere in this report.*

Areas of Expertise are separate from official TESOL interest sections or Areas of Interest. Areas of expertise represent distinct areas in which a member may be experienced in, rather than official entities in which a member is involved.

Areas of interest which have a very low count may be recent additions to the AOI list, or may reflect overall trends in membership.