

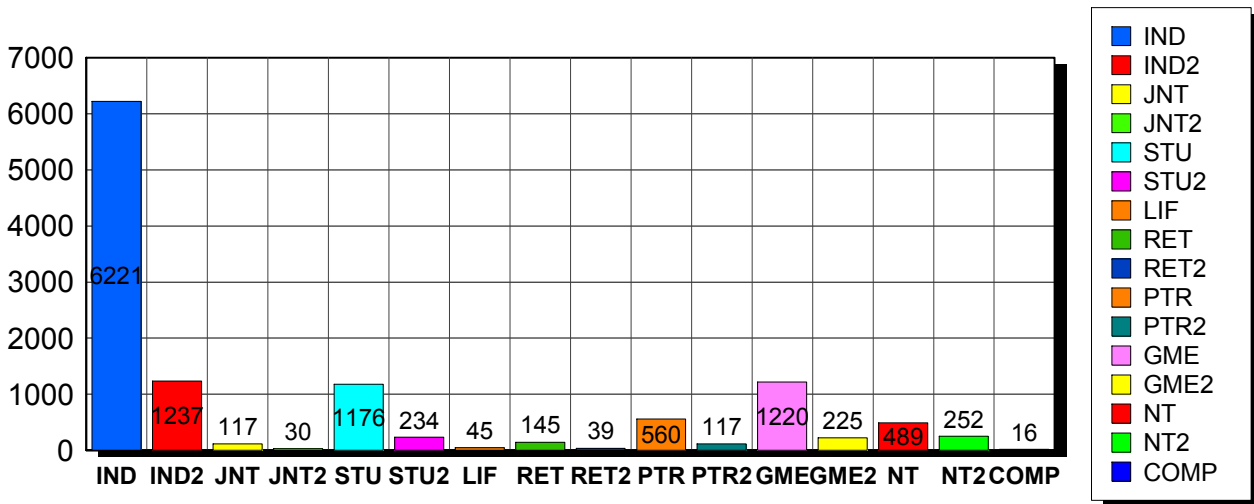
This report is based on members paid through 11/30/2010 or later.

12/8/2010

### Membership Statistics: Grand totals for basic membership, by member type

		<u># Memberships</u>	<u># Members</u>
IND	BASIC	6,221	6,221
IND2	BASIC	1,237	1,237
JNT	BASIC	117	234
JNT2	BASIC	30	60
STU	BASIC	1,176	1,176
STU2	BASIC	234	234
LIF	BASIC	45	45
RET	BASIC	145	145
RET2	BASIC	39	39
PTR	BASIC	560	560
PTR2	BASIC	117	117
GME	BASIC	1,220	1,220
GME2	BASIC	225	225
NT	BASIC	489	489
NT2	BASIC	252	252
COMP	BASIC	16	16
<b>Grand Total:</b>		<b>12,123</b>	<b>12,270</b>

### Member Types



Note: in all general statistic reports, joint household memberships are treated as "one" member EXCEPT in the second column of this report, where joints are counted as two people, providing the most accurate count of the number of TESOL members.

This report is based on members paid through 11/30/2010 or later.

Country/State/Province	Total	
<b>AFGHANISTAN</b>	<b>1</b>	0.0%
<b>ALBANIA</b>	<b>9</b>	0.1%
<b>ALGERIA</b>	<b>19</b>	0.2%
<b>AMERICAN SAMOA</b>	<b>1</b>	0.0%
<b>ANGOLA</b>	<b>2</b>	0.0%
<b>ARGENTINA</b>	<b>31</b>	0.3%
<b>ARMENIA</b>	<b>5</b>	0.0%
<b>AUSTRALIA</b>	<b>71</b>	0.6%
<b>AUSTRIA</b>	<b>3</b>	0.0%
<b>AZERBAIJAN</b>	<b>4</b>	0.0%
<b>BAHRAIN</b>	<b>10</b>	0.1%
<b>BANGLADESH</b>	<b>9</b>	0.1%
<b>BELARUS</b>	<b>1</b>	0.0%
<b>BELGIUM</b>	<b>2</b>	0.0%
<b>BOLIVIA</b>	<b>60</b>	0.5%
<b>BOSNIA AND HERZEGOVINA</b>	<b>1</b>	0.0%
<b>BOTSWANA</b>	<b>2</b>	0.0%
<b>BRAZIL</b>	<b>114</b>	0.9%
<b>BRUNEI DARUSSALAM</b>	<b>1</b>	0.0%
<b>BULGARIA</b>	<b>1</b>	0.0%
<b>BURKINA FASO</b>	<b>3</b>	0.0%
<b>CAMBODIA</b>	<b>6</b>	0.0%
<b>CAMEROON</b>	<b>15</b>	0.1%
<b>Canada</b>	<b>1</b>	0.0%
<b>CANADA</b>		
<i>CANADA</i>	<i>1</i>	
<i>CANADA</i>	<i>Alberta</i>	<i>40</i>
<i>CANADA</i>	<i>British Columbia</i>	<i>93</i>
<i>CANADA</i>	<i>Manitoba</i>	<i>20</i>
<i>CANADA</i>	<i>New Brunswick</i>	<i>20</i>
<i>CANADA</i>	<i>Newfoundland</i>	<i>4</i>
<i>CANADA</i>	<i>Nova Scotia</i>	<i>12</i>
<i>CANADA</i>	<i>Ontario</i>	<i>105</i>
<i>CANADA</i>	<i>Prince Edward Island</i>	<i>3</i>
<i>CANADA</i>	<i>Quebec</i>	<i>30</i>
<i>CANADA</i>	<i>Saskatchewan</i>	<i>7</i>
<i>CANADA</i>	<i>Yukon Territory</i>	<i>1</i>
<b>CANADA</b>	<b>336</b>	2.8%
<b>CAPE VERDE</b>	<b>1</b>	0.0%
<b>CAYMAN ISLANDS</b>	<b>1</b>	0.0%
<b>CHILE</b>	<b>23</b>	0.2%
<b>CHINA</b>	<b>85</b>	0.7%
<b>COLOMBIA</b>	<b>36</b>	0.3%
<b>COSTA RICA</b>	<b>27</b>	0.2%
<b>COTE D'IVOIRE</b>	<b>2</b>	0.0%
<b>CROATIA</b>	<b>5</b>	0.0%
<b>CYPRUS</b>	<b>5</b>	0.0%
<b>CZECH REPUBLIC</b>	<b>8</b>	0.1%
<b>DENMARK</b>	<b>2</b>	0.0%
<b>DOMINICAN REPUBLIC</b>	<b>15</b>	0.1%
<b>EAST TIMOR</b>	<b>1</b>	0.0%
<b>ECUADOR</b>	<b>36</b>	0.3%
<b>EGYPT</b>	<b>21</b>	0.2%
<b>EL SALVADOR</b>	<b>5</b>	0.0%
<b>ESTONIA</b>	<b>1</b>	0.0%
<b>FINLAND</b>	<b>6</b>	0.0%
<b>FRANCE</b>	<b>13</b>	0.1%

GEORGIA	5	0.0%
GERMANY	25	0.2%
GHANA	1	0.0%
GREECE	17	0.1%
GUAM	2	0.0%
GUATEMALA	19	0.2%
HAITI	13	0.1%
HONDURAS	9	0.1%
HONG KONG	14	0.1%
HONG KONG SAR CHINA	28	0.2%
HUNGARY	3	0.0%
ICELAND	3	0.0%
INDIA	25	0.2%
INDONESIA	25	0.2%
IRAN	6	0.0%
IRAN, ISLAMIC REPUBLIC OF	2	0.0%
IRAQ	15	0.1%
IRELAND	4	0.0%
ISRAEL	19	0.2%
ITALY	22	0.2%
JAMAICA	1	0.0%
JAPAN	458	3.8%
JORDAN	8	0.1%
KAZAKHSTAN	6	0.0%
KOREA, REPUBLIC OF	31	0.3%
KOSOVO (UNMIK)	2	0.0%
KUWAIT	19	0.2%
KYRGYZSTAN	1	0.0%
LAOS	11	0.1%
LATVIA	1	0.0%
LEBANON	8	0.1%
LIBYA	6	0.0%
LITHUANIA	4	0.0%
MACAO	9	0.1%
MACEDONIA	3	0.0%
MADAGASCAR	5	0.0%
MALAYSIA	21	0.2%
MALDIVES	2	0.0%
MALTA	1	0.0%
MARSHALL ISLANDS	5	0.0%
MARTINIQUE	1	0.0%
MAURITIUS	1	0.0%
MEXICO	183	1.5%
MICRONESIA, FED STATES OF	1	0.0%
MOLDOVA, REPUBLIC OF	4	0.0%
MONGOLIA	8	0.1%
MONTENEGRO	1	0.0%
MOROCCO	30	0.2%
MOZAMBIQUE	1	0.0%
MYANMAR	1	0.0%
NAMIBIA	1	0.0%
NEPAL	6	0.0%
NETHERLANDS	7	0.1%
NEW ZEALAND	13	0.1%
NICARAGUA	6	0.0%
NIGER	1	0.0%
NIGERIA	1	0.0%
NORWAY	3	0.0%
OMAN	13	0.1%
PAKISTAN	5	0.0%
PALAU	2	0.0%

<b>PALESTINIAN TERRITORY</b>	<b>2</b>	<b>0.0%</b>
<b>PANAMA</b>	<b>34</b>	<b>0.3%</b>
<b>PARAGUAY</b>	<b>6</b>	<b>0.0%</b>
<b>PEOPLES REP OF CHINA</b>	<b>50</b>	<b>0.4%</b>
<b>PERU</b>	<b>91</b>	<b>0.8%</b>
<b>PHILIPPINES</b>	<b>45</b>	<b>0.4%</b>
<b>POLAND</b>	<b>11</b>	<b>0.1%</b>
<b>PORTUGAL</b>	<b>1</b>	<b>0.0%</b>
<b>OATAR</b>	<b>25</b>	<b>0.2%</b>
<b>ROMANIA</b>	<b>2</b>	<b>0.0%</b>
<b>RUSSIA</b>	<b>36</b>	<b>0.3%</b>
<b>RUSSIAN FEDERATION</b>	<b>7</b>	<b>0.1%</b>
<b>RWANDA</b>	<b>2</b>	<b>0.0%</b>
<b>SAO TOME AND PRINCIPE</b>	<b>1</b>	<b>0.0%</b>
<b>SAUDI ARABIA</b>	<b>45</b>	<b>0.4%</b>
<b>SENEGAL</b>	<b>9</b>	<b>0.1%</b>
<b>SERBIA</b>	<b>5</b>	<b>0.0%</b>
<b>SIERRA LEONE</b>	<b>1</b>	<b>0.0%</b>
<b>SINGAPORE</b>	<b>19</b>	<b>0.2%</b>
<b>SLOVAKIA</b>	<b>1</b>	<b>0.0%</b>
<b>SOUTH AFRICA</b>	<b>5</b>	<b>0.0%</b>
<b>SOUTH KOREA</b>	<b>58</b>	<b>0.5%</b>
<b>SPAIN</b>	<b>21</b>	<b>0.2%</b>
<b>SRI LANKA</b>	<b>2</b>	<b>0.0%</b>
<b>SUDAN</b>	<b>5</b>	<b>0.0%</b>
<b>SWAZILAND</b>	<b>1</b>	<b>0.0%</b>
<b>SWEDEN</b>	<b>8</b>	<b>0.1%</b>
<b>SWITZERLAND</b>	<b>9</b>	<b>0.1%</b>
<b>SYRIAN ARAB REPUBLIC</b>	<b>3</b>	<b>0.0%</b>
<b>TAIWAN</b>	<b>26</b>	<b>0.2%</b>
<b>TAIWAN ROC</b>	<b>42</b>	<b>0.3%</b>
<b>TAIWAN, PROVINCE OF CHINA</b>	<b>1</b>	<b>0.0%</b>
<b>TAJKISTAN</b>	<b>3</b>	<b>0.0%</b>
<b>THAILAND</b>	<b>37</b>	<b>0.3%</b>
<b>TOGO</b>	<b>1</b>	<b>0.0%</b>
<b>TRINIDAD AND TOBAGO</b>	<b>2</b>	<b>0.0%</b>
<b>TUNISIA</b>	<b>6</b>	<b>0.0%</b>
<b>TURKEY</b>	<b>50</b>	<b>0.4%</b>
<b>UGANDA</b>	<b>1</b>	<b>0.0%</b>
<b>UKRAINE</b>	<b>13</b>	<b>0.1%</b>
<b>UNITED ARAB EMIRATES</b>	<b>54</b>	<b>0.4%</b>
<b>UNITED KINGDOM</b>	<b>49</b>	<b>0.4%</b>
<b>UNITED STATES OF AMERICA</b>	<b>3</b>	<b>0.0%</b>
<b>URUGUAY</b>	<b>21</b>	<b>0.2%</b>
<b>US MINOR OUTLYING ISLANDS</b>	<b>4</b>	<b>0.0%</b>
<b>USA</b>		
USA	42	
USA	Alabama	71
USA	Alaska	27
USA	American Embassy	23
USA	Arizona	186
USA	Arkansas	71
USA	Armed Forces	13
USA	Armed Frces Americas	1
USA	British Columbia	1
USA	California	866
USA	Colorado	184
USA	Connecticut	198
USA	Delaware	27
USA	District of Columbia	142
USA	Florida	345

USA	Georgia	222	
USA	Guam	4	
USA	Hawaii	77	
USA	Idaho	32	
USA	Illinois	319	
USA	Indiana	151	
USA	Iowa	106	
USA	Kansas	96	
USA	Kentucky	71	
USA	Louisiana	46	
USA	Maine	59	
USA	Manitoba	1	
USA	Marshall Islands	1	
USA	Maryland	300	
USA	Massachusetts	718	
USA	Michigan	207	
USA	Minnesota	177	
USA	Mississippi	52	
USA	Missouri	155	
USA	Montana	15	
USA	N Mariana Islands	1	
USA	Nebraska	48	
USA	Nevada	49	
USA	New Hampshire	102	
USA	New Jersey	277	
USA	New Mexico	57	
USA	New York	732	
USA	North Carolina	148	
USA	North Dakota	21	
USA	Ohio	213	
USA	Oklahoma	72	
USA	Ontario	4	
USA	Oregon	173	
USA	Pennsylvania	350	
USA	Puerto Rico	52	
USA	Rhode Island	111	
USA	South Carolina	57	
USA	South Dakota	7	
USA	Tennessee	91	
USA	Texas	438	
USA	Utah	111	
USA	Vermont	101	
USA	Virginia	367	
USA	Washington	285	
USA	West Virginia	24	
USA	Wisconsin	195	
USA	Wyoming	19	
<b>USA</b>		<b>9,111</b>	<b>75.2%</b>
<b>UZBEKISTAN</b>		<b>4</b>	<b>0.0%</b>
<b>VENEZUELA</b>		<b>16</b>	<b>0.1%</b>
<b>VIET NAM</b>		<b>2</b>	<b>0.0%</b>
<b>VIETNAM</b>		<b>14</b>	<b>0.1%</b>
<b>VIRGIN ISLANDS, U.S.</b>		<b>7</b>	<b>0.1%</b>
<b>YEMEN</b>		<b>2</b>	<b>0.0%</b>
<b>Grand Total:</b>		<b>12,123</b>	

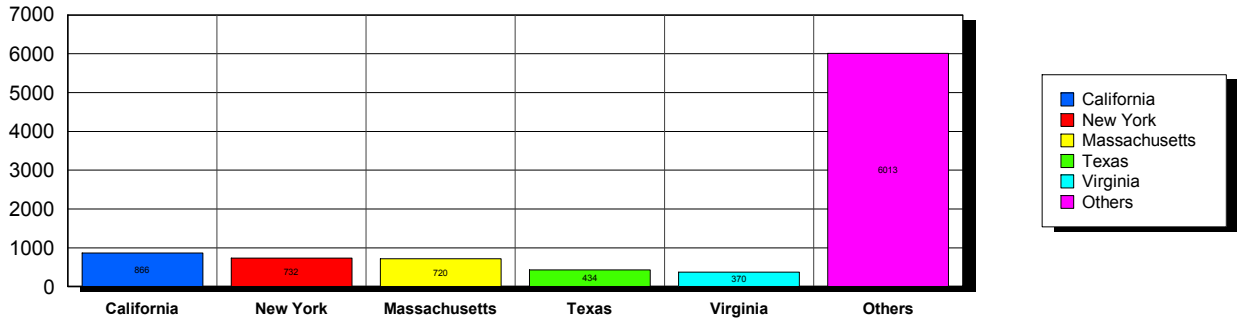
157 distinct countries represented.

12/8/2010

Membership counts by country for members paid through 11/30/2010 or later.

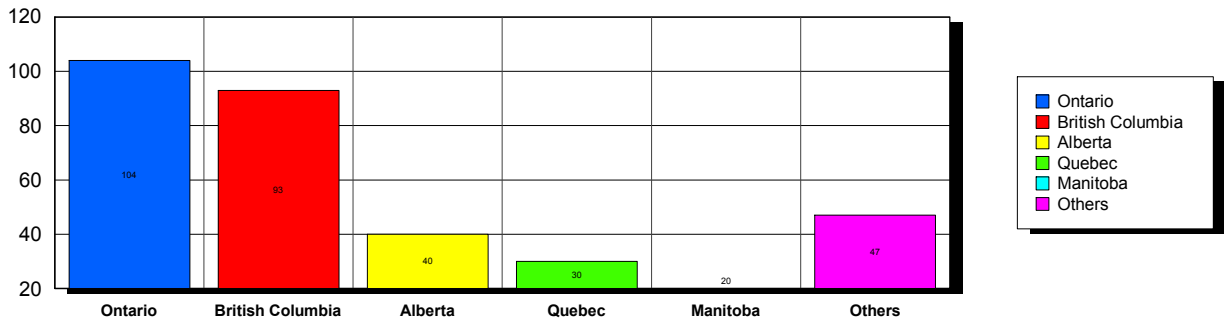
USA

**Top 5 States per Country**

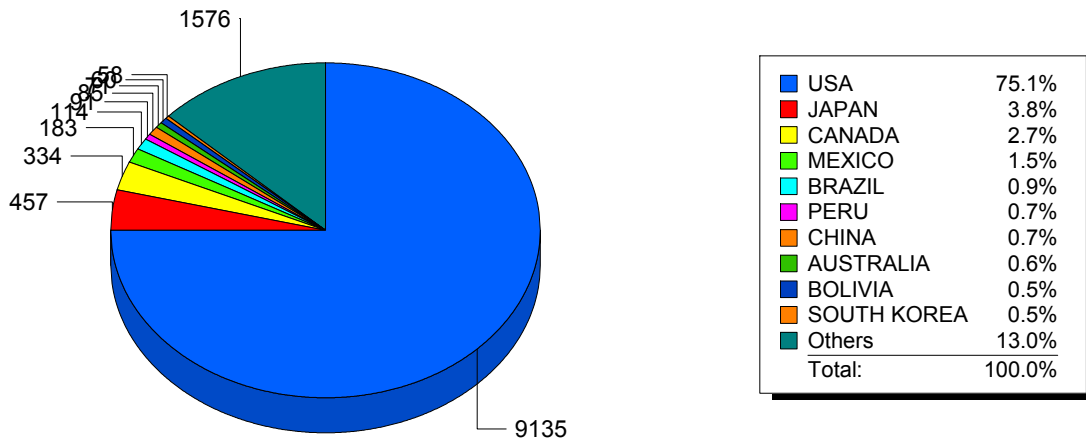


CANADA

**Top 5 States per Country**



**Top 10 Countries**



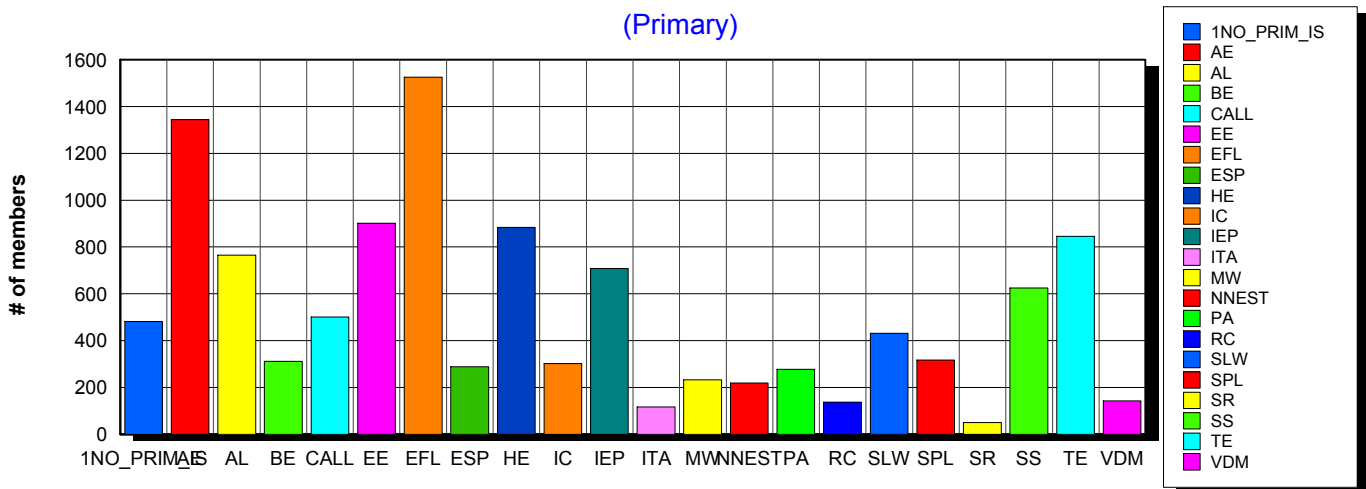
12/8/2010 **Basic statistics on Primary vs. other memberships in interest sections. For members paid through 11/30/2010 or later.**

			<i>Primary versus other</i>	
No Primary Interest Section	1.2%	491	482	9
Adult Education	7.3%	3,005	1,344	1,661
Applied Linguistics	6.0%	2,479	765	1,714
Bilingual Education	4.0%	1,643	312	1,331
Computer-Assisted Language Learning	5.3%	2,178	501	1,677
Elementary Education	4.7%	1,940	902	1,038
English as a Foreign Language	8.2%	3,364	1,526	1,838
English for Specific Purposes	4.4%	1,809	288	1,521
Higher Education	6.0%	2,485	883	1,602
Intercultural Communication	4.7%	1,952	302	1,650
Intensive English Programs	5.4%	2,209	708	1,501
International Teaching Assistants	2.6%	1,085	116	969
Materials Writers	3.5%	1,456	232	1,224
Nonnative English Speakers in TESOL	3.2%	1,310	219	1,091
Program Administration	3.4%	1,392	278	1,114
Refugee Concerns	2.4%	996	137	859
Second Language Writing	5.8%	2,379	431	1,948
Speech, Pronunciation, and Listening	5.1%	2,111	317	1,794
Social Responsibility	2.0%	841	50	791
Secondary Schools	4.0%	1,662	625	1,037
Teacher Education	7.1%	2,922	846	2,076
Video & Digital Media	3.6%	1,474	142	1,332
<i>11,434 distinct members</i>		<b>Total # of IS memberships</b>	<b>41,183</b>	<b>11,406</b>
				<b>29,777</b>

The total count is the number of IS memberships total and may either be LESS or MORE than the actual number of individual members of TESOL. Due to open access to Interest Sections, these numbers may fluctuate considerably each month. For instance, one member may have selected four interest sections, while some members may belong to none.

### Interest Sections

(Primary)

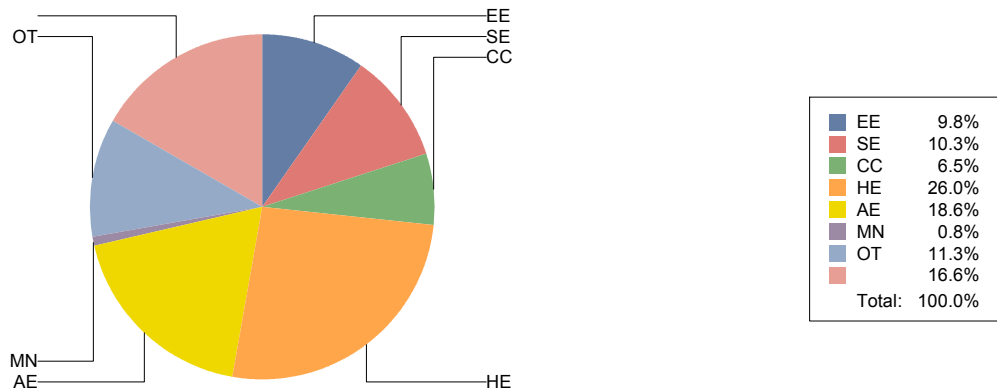


## Basic Statistics on Area of Work (Members paid through >= 11/30/2010)

Elementary Education	EE	1,180	9.8%
Secondary Education	SE	1,244	10.3%
Community/2yr College	CC	788	6.5%
Postsecondary Education	HE	3,140	26.0%
Adult Education	AE	2,246	18.6%
Mainstream	MN	96	0.8%
Other	OT	1,361	11.3%
		<b>2,004</b>	<b>16.6%</b>
		<b>12,059</b>	

Only members who selected an area of work are included on this report. Other members may not have responded to this question and are excluded from the count.

### Areas of Work



(Blanks indicate no response)



## Statistics on Areas of Interest (Members paid through >= 11/30/2010)

<u>CODE</u>	<u>DESCRIPTION</u>	<u>TOTAL*</u>	<u>% of TOTAL*</u>
EFL	English as a foreign language	3,040	5%
CURRICULUM	Materials development/Curriculum	2,799	4%
SLA	Second language acquisition	2,746	4%
TE	Teacher education	2,731	4%
AL	Applied linguistics	2,540	4%
IC	Multiculturalism/intercultural communications	2,526	4%
AE	Adult education	2,476	4%
WRITING	Writing/composition	2,410	4%
CALL	Technology in education	2,360	4%
CONTENT	Content-based instruction	2,269	4%
HE	Higher education	2,156	3%
PROFDEV	Professional development	2,131	3%
READING	Reading/literacy	2,075	3%
IEP	Intensive English programs	2,050	3%
SP	Speaking/pronunciation	1,932	3%
ASSESS	Assessment/testing	1,864	3%
GRAMMAR	Grammar	1,830	3%
ESP	English for specific purposes	1,718	3%
BE	Bilingual education	1,572	2%
RS	Research	1,543	2%
DISTANCE	Distance learning/Online Education	1,277	2%
EE	Elementary/primary education	1,274	2%
PA	Program administration	1,244	2%
VOCAB	Vocabulary/Lexicon	1,236	2%
SS	Secondary education	1,157	2%
SOCIAL	Social/global/political concerns	1,094	2%
WORKPLACE	Workplace English instruction/Business English	1,052	2%
LISTEN	Listening	1,009	2%
ISKILL	Integrated Skills	1,006	2%
VI	Video and digital media	982	2%
COMMCOLL	Community college/technical ed	873	1%
RC	Refugee concerns	779	1%
LIT	Literature	765	1%
STANDARDS	Standards	752	1%
LINGUISTICS	Theoretical Linguistics	734	1%
ITA	International teaching assistants	718	1%
FAMILY	Community/family outreach	662	1%
EMPLOYMENT	Employment issues/Certification	534	1%
LDSN	Learning Disorders/Special Needs	530	1%
PUBLICPOLICY	Public policy	496	1%
MAINSTREAMING	Mainstreaming	469	1%
NNES	NNES/NES issues	457	1%
ARTS	Arts/Media/Science/Math/Social Science	370	1%
ACCRED	Accreditation	331	1%
STYLISTICS	Stylistics	140	0%

Sorted in order of prevalence.

*\* Note: Members are encouraged to choose multiple areas of interest and some members do not choose any areas of interest. The total number of distinct members (8,810) represented in this report is less than the total number of active members as indicated elsewhere in this report.*

*Areas of interest are separate from official TESOL interest sections. Areas of interest represent distinct areas in which a member may be interested, rather than official entities in which a member is involved.*

*Areas of interest which have a very low count may be recent additions to the AOI list, or may reflect overall trends in membership.*

## Statistics on Areas of Expertise (Members paid through >= 11/30/2010)

<u>CODE</u>	<u>DESCRIPTION</u>	<u>TOTAL*</u>	<u>% of TOTAL*</u>
EFL	English as a foreign language	1,900	7%
AE	Adult education	1,566	6%
CURRICULUM	Materials development/Curriculum	1,341	5%
WRITING	Writing/composition	1,231	5%
AL	Applied linguistics	1,214	4%
TE	Teacher education	1,146	4%
SLA	Second language acquisition	1,113	4%
IEP	Intensive English programs	1,097	4%
HE	Higher education	1,048	4%
CONTENT	Content-based instruction	999	4%
GRAMMAR	Grammar	921	3%
IC	Multiculturalism/intercultural communications	870	3%
EE	Elementary/primary education	849	3%
READING	Reading/literacy	777	3%
ESP	English for specific purposes	766	3%
PROFDEV	Professional development	750	3%
CALL	Technology in education	746	3%
SP	Speaking/pronunciation	714	3%
ASSESS	Assessment/testing	685	3%
PA	Program administration	622	2%
SS	Secondary education	583	2%
BE	Bilingual education	576	2%
ISKILL	Integrated Skills	507	2%
COMMCOLL	Community college/technical ed	493	2%
WORKPLACE	Workplace English instruction/Business English	437	2%
DISTANCE	Distance learning/Online Education	430	2%
RS	Research	405	1%
LISTEN	Listening	369	1%
LIT	Literature	343	1%
VOCAB	Vocabulary/Lexicon	324	1%
SOCIAL	Social/global/political concerns	273	1%
VI	Video and digital media	211	1%
FAMILY	Community/family outreach	203	1%
ITA	International teaching assistants	200	1%
ARTS	Arts/Media/Science/Math/Social Science	194	1%
NNES	NNES/NES issues	190	1%
STANDARDS	Standards	175	1%
ACCRED	Accreditation	160	1%
RC	Refugee concerns	157	1%
MAINSTREAMING	Mainstreaming	155	1%
LINGUISTICS	Theoretical Linguistics	152	1%
LDSN	Learning Disorders/Special Needs	148	1%
EMPLOYMENT	Employment issues/Certification	117	0%
PUBLICPOLICY	Public policy	84	0%
STYLISTICS	Stylistics	25	0%

Sorted in order of prevalence.

*\* Note: Members are encouraged to choose multiple areas of expertise and some members do not choose any areas of expertise. The total number of distinct members (6,757) represented in this report is less than the total number of active members as indicated elsewhere in this report.*

*Areas of Expertise are separate from official TESOL interest sections or Areas of Interest. Areas of expertise represent distinct areas in which a member may be experienced in, rather than official entities in which a member is involved.*

*Areas of interest which have a very low count may be recent additions to the AOI list, or may reflect overall trends in membership.*