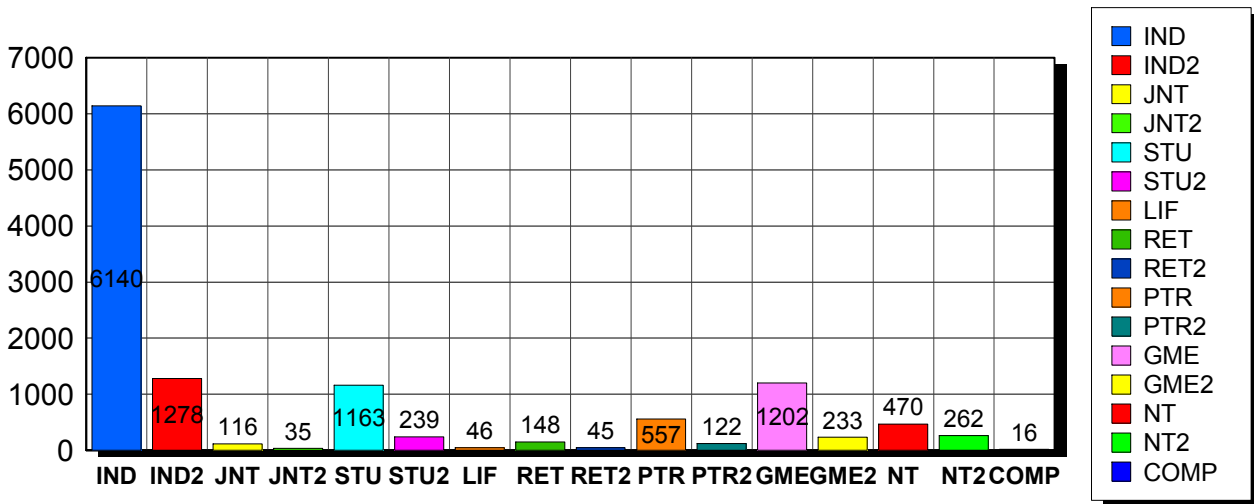


1/11/2011

### Membership Statistics: Grand totals for basic membership, by member type

		<u># Memberships</u>	<u># Members</u>
IND	BASIC	6,140	6,140
IND2	BASIC	1,278	1,278
JNT	BASIC	116	232
JNT2	BASIC	35	70
STU	BASIC	1,163	1,163
STU2	BASIC	239	239
LIF	BASIC	46	46
RET	BASIC	148	148
RET2	BASIC	45	45
PTR	BASIC	557	557
PTR2	BASIC	122	122
GME	BASIC	1,202	1,202
GME2	BASIC	233	233
NT	BASIC	470	470
NT2	BASIC	262	262
COMP	BASIC	16	16
<b>Grand Total:</b>		<b>12,072</b>	<b>12,223</b>

### Member Types



Note: in all general statistic reports, joint household memberships are treated as "one" member EXCEPT in the second column of this report, where joints are counted as two people, providing the most accurate count of the number of TESOL members.

This report is based on members paid through 12/31/2010 or later.

Country/State/Province	Total	
<b>AFGHANISTAN</b>	<b>2</b>	<b>0.0%</b>
<b>ALBANIA</b>	<b>10</b>	<b>0.1%</b>
<b>ALGERIA</b>	<b>19</b>	<b>0.2%</b>
<b>AMERICAN SAMOA</b>	<b>1</b>	<b>0.0%</b>
<b>ANGOLA</b>	<b>1</b>	<b>0.0%</b>
<b>ARGENTINA</b>	<b>33</b>	<b>0.3%</b>
<b>ARMENIA</b>	<b>5</b>	<b>0.0%</b>
<b>AUSTRALIA</b>	<b>72</b>	<b>0.6%</b>
<b>AUSTRIA</b>	<b>3</b>	<b>0.0%</b>
<b>AZERBAIJAN</b>	<b>4</b>	<b>0.0%</b>
<b>BAHRAIN</b>	<b>11</b>	<b>0.1%</b>
<b>BANGLADESH</b>	<b>9</b>	<b>0.1%</b>
<b>BELARUS</b>	<b>1</b>	<b>0.0%</b>
<b>BELGIUM</b>	<b>2</b>	<b>0.0%</b>
<b>BENIN</b>	<b>1</b>	<b>0.0%</b>
<b>BOLIVIA</b>	<b>60</b>	<b>0.5%</b>
<b>BOSNIA AND HERZEGOVINA</b>	<b>1</b>	<b>0.0%</b>
<b>BOTSWANA</b>	<b>2</b>	<b>0.0%</b>
<b>BRAZIL</b>	<b>112</b>	<b>0.9%</b>
<b>BRUNEI DARUSSALAM</b>	<b>1</b>	<b>0.0%</b>
<b>BULGARIA</b>	<b>1</b>	<b>0.0%</b>
<b>BURKINA FASO</b>	<b>3</b>	<b>0.0%</b>
<b>CAMBODIA</b>	<b>5</b>	<b>0.0%</b>
<b>CAMEROON</b>	<b>15</b>	<b>0.1%</b>
<b>Canada</b>	<b>1</b>	<b>0.0%</b>
<b>CANADA</b>		
<i>CANADA</i>	<i>1</i>	
<i>CANADA</i>	<i>Alberta</i>	<i>44</i>
<i>CANADA</i>	<i>British Columbia</i>	<i>98</i>
<i>CANADA</i>	<i>Manitoba</i>	<i>18</i>
<i>CANADA</i>	<i>New Brunswick</i>	<i>18</i>
<i>CANADA</i>	<i>Newfoundland</i>	<i>3</i>
<i>CANADA</i>	<i>Nova Scotia</i>	<i>13</i>
<i>CANADA</i>	<i>Ontario</i>	<i>100</i>
<i>CANADA</i>	<i>Prince Edward Island</i>	<i>2</i>
<i>CANADA</i>	<i>Quebec</i>	<i>30</i>
<i>CANADA</i>	<i>Saskatchewan</i>	<i>8</i>
<i>CANADA</i>	<i>Yukon Territory</i>	<i>1</i>
<b>CANADA</b>	<b>336</b>	<b>2.8%</b>
<b>CAPE VERDE</b>	<b>1</b>	<b>0.0%</b>
<b>CAYMAN ISLANDS</b>	<b>1</b>	<b>0.0%</b>
<b>CHILE</b>	<b>27</b>	<b>0.2%</b>
<b>CHINA</b>	<b>87</b>	<b>0.7%</b>
<b>COLOMBIA</b>	<b>35</b>	<b>0.3%</b>
<b>COSTA RICA</b>	<b>27</b>	<b>0.2%</b>
<b>COTE D'IVOIRE</b>	<b>2</b>	<b>0.0%</b>
<b>CROATIA</b>	<b>6</b>	<b>0.0%</b>
<b>CYPRUS</b>	<b>3</b>	<b>0.0%</b>
<b>CZECH REPUBLIC</b>	<b>7</b>	<b>0.1%</b>
<b>DENMARK</b>	<b>2</b>	<b>0.0%</b>
<b>DOMINICAN REPUBLIC</b>	<b>15</b>	<b>0.1%</b>
<b>EAST TIMOR</b>	<b>1</b>	<b>0.0%</b>
<b>ECUADOR</b>	<b>35</b>	<b>0.3%</b>
<b>EGYPT</b>	<b>24</b>	<b>0.2%</b>
<b>EL SALVADOR</b>	<b>5</b>	<b>0.0%</b>
<b>ESTONIA</b>	<b>1</b>	<b>0.0%</b>
<b>FINLAND</b>	<b>6</b>	<b>0.0%</b>

FRANCE	12	0.1%
GEORGIA	4	0.0%
GERMANY	24	0.2%
GHANA	1	0.0%
GREECE	17	0.1%
GUAM	1	0.0%
GUATEMALA	18	0.1%
HAITI	13	0.1%
HONDURAS	9	0.1%
HONG KONG	15	0.1%
HONG KONG SAR CHINA	27	0.2%
HUNGARY	3	0.0%
ICELAND	3	0.0%
INDIA	24	0.2%
INDONESIA	25	0.2%
IRAN	6	0.0%
IRAN, ISLAMIC REPUBLIC OF	2	0.0%
IRAQ	15	0.1%
IRELAND	4	0.0%
ISRAEL	20	0.2%
ITALY	21	0.2%
JAMAICA	1	0.0%
JAPAN	456	3.8%
JORDAN	7	0.1%
KAZAKHSTAN	7	0.1%
KOREA, REPUBLIC OF	35	0.3%
KOSOVO (UNMIK)	2	0.0%
KUWAIT	21	0.2%
KYRGYZSTAN	1	0.0%
LAOS	11	0.1%
LATVIA	1	0.0%
LEBANON	9	0.1%
LIBYA	6	0.0%
LITHUANIA	4	0.0%
MACAO	6	0.0%
MACEDONIA	3	0.0%
MADAGASCAR	5	0.0%
MALAYSIA	22	0.2%
MALDIVES	2	0.0%
MALTA	1	0.0%
MARSHALL ISLANDS	4	0.0%
MARTINIQUE	1	0.0%
MAURITIUS	1	0.0%
MEXICO	179	1.5%
MICRONESIA, FED STATES OF	1	0.0%
MOLDOVA, REPUBLIC OF	4	0.0%
MONGOLIA	8	0.1%
MONTENEGRO	1	0.0%
MOROCCO	29	0.2%
MOZAMBIOUE	1	0.0%
MYANMAR	1	0.0%
NAMIBIA	1	0.0%
NEPAL	6	0.0%
NETHERLANDS	7	0.1%
NEW ZEALAND	14	0.1%
NICARAGUA	6	0.0%
NIGER	1	0.0%
NIGERIA	1	0.0%
NORWAY	3	0.0%
OMAN	12	0.1%
PAKISTAN	5	0.0%

<b>PALAU</b>		<b>2</b>	<b>0.0%</b>
<b>PALESTINIAN TERRITORY</b>		<b>2</b>	<b>0.0%</b>
<b>PANAMA</b>		<b>36</b>	<b>0.3%</b>
<b>PARAGUAY</b>		<b>7</b>	<b>0.1%</b>
<b>PEOPLES REP OF CHINA</b>		<b>49</b>	<b>0.4%</b>
<b>PERU</b>		<b>95</b>	<b>0.8%</b>
<b>PHILIPPINES</b>		<b>45</b>	<b>0.4%</b>
<b>POLAND</b>		<b>11</b>	<b>0.1%</b>
<b>PORTUGAL</b>		<b>1</b>	<b>0.0%</b>
<b>OATAR</b>		<b>28</b>	<b>0.2%</b>
<b>ROMANIA</b>		<b>2</b>	<b>0.0%</b>
<b>RUSSIA</b>		<b>36</b>	<b>0.3%</b>
<b>RUSSIAN FEDERATION</b>		<b>7</b>	<b>0.1%</b>
<b>RWANDA</b>		<b>2</b>	<b>0.0%</b>
<b>SAO TOME AND PRINCIPE</b>		<b>1</b>	<b>0.0%</b>
<b>SAUDI ARABIA</b>		<b>47</b>	<b>0.4%</b>
<b>SENEGAL</b>		<b>9</b>	<b>0.1%</b>
<b>SERBIA</b>		<b>5</b>	<b>0.0%</b>
<b>SIERRA LEONE</b>		<b>1</b>	<b>0.0%</b>
<b>SINGAPORE</b>		<b>18</b>	<b>0.1%</b>
<b>SLOVAKIA</b>		<b>1</b>	<b>0.0%</b>
<b>SOUTH AFRICA</b>		<b>5</b>	<b>0.0%</b>
<b>SOUTH KOREA</b>		<b>62</b>	<b>0.5%</b>
<b>SPAIN</b>		<b>21</b>	<b>0.2%</b>
<b>SRI LANKA</b>		<b>2</b>	<b>0.0%</b>
<b>SUDAN</b>		<b>5</b>	<b>0.0%</b>
<b>SWAZILAND</b>		<b>1</b>	<b>0.0%</b>
<b>SWEDEN</b>		<b>8</b>	<b>0.1%</b>
<b>SWITZERLAND</b>		<b>9</b>	<b>0.1%</b>
<b>SYRIAN ARAB REPUBLIC</b>		<b>3</b>	<b>0.0%</b>
<b>TAIWAN</b>		<b>25</b>	<b>0.2%</b>
<b>TAIWAN ROC</b>		<b>51</b>	<b>0.4%</b>
<b>TAIWAN, PROVINCE OF CHINA</b>		<b>1</b>	<b>0.0%</b>
<b>TAJKISTAN</b>		<b>3</b>	<b>0.0%</b>
<b>THAILAND</b>		<b>38</b>	<b>0.3%</b>
<b>TOGO</b>		<b>1</b>	<b>0.0%</b>
<b>TRINIDAD AND TOBAGO</b>		<b>3</b>	<b>0.0%</b>
<b>TUNISIA</b>		<b>6</b>	<b>0.0%</b>
<b>TURKEY</b>		<b>49</b>	<b>0.4%</b>
<b>UGANDA</b>		<b>1</b>	<b>0.0%</b>
<b>UKRAINE</b>		<b>12</b>	<b>0.1%</b>
<b>UNITED ARAB EMIRATES</b>		<b>54</b>	<b>0.4%</b>
<b>UNITED KINGDOM</b>		<b>47</b>	<b>0.4%</b>
<b>URUGUAY</b>		<b>18</b>	<b>0.1%</b>
<b>US MINOR OUTLYING ISLANDS</b>		<b>4</b>	<b>0.0%</b>
<b>USA</b>			
<i>USA</i>		<i>34</i>	
<i>USA</i>	<i>Alabama</i>	<i>76</i>	
<i>USA</i>	<i>Alaska</i>	<i>25</i>	
<i>USA</i>	<i>American Embassy</i>	<i>23</i>	
<i>USA</i>	<i>Arizona</i>	<i>193</i>	
<i>USA</i>	<i>Arkansas</i>	<i>69</i>	
<i>USA</i>	<i>Armed Forces</i>	<i>12</i>	
<i>USA</i>	<i>Armed Frces Americas</i>	<i>2</i>	
<i>USA</i>	<i>British Columbia</i>	<i>1</i>	
<i>USA</i>	<i>California</i>	<i>881</i>	
<i>USA</i>	<i>Colorado</i>	<i>184</i>	
<i>USA</i>	<i>Connecticut</i>	<i>198</i>	
<i>USA</i>	<i>Delaware</i>	<i>25</i>	
<i>USA</i>	<i>District of Columbia</i>	<i>137</i>	
<i>USA</i>	<i>Florida</i>	<i>348</i>	

USA	Georgia	216	
USA	Guam	5	
USA	Hawaii	70	
USA	Idaho	30	
USA	Illinois	323	
USA	Indiana	151	
USA	Iowa	107	
USA	Kansas	91	
USA	Kentucky	71	
USA	Louisiana	52	
USA	Maine	53	
USA	Marshall Islands	1	
USA	Maryland	308	
USA	Massachusetts	656	
USA	Michigan	208	
USA	Minnesota	172	
USA	Mississippi	54	
USA	Missouri	158	
USA	Montana	14	
USA	N Mariana Islands	1	
USA	Nebraska	46	
USA	Nevada	47	
USA	New Hampshire	97	
USA	New Jersey	280	
USA	New Mexico	56	
USA	New York	731	
USA	North Carolina	157	
USA	North Dakota	22	
USA	Ohio	213	
USA	Oklahoma	63	
USA	Ontario	4	
USA	Oregon	178	
USA	Pennsylvania	352	
USA	Puerto Rico	52	
USA	Rhode Island	110	
USA	South Carolina	57	
USA	South Dakota	8	
USA	Tennessee	90	
USA	Texas	429	
USA	Utah	108	
USA	Vermont	106	
USA	Virginia	364	
USA	Washington	287	
USA	West Virginia	27	
USA	Wisconsin	191	
USA	Wyoming	21	
<b>USA</b>		<b>9,045</b>	<b>74.9%</b>
<b>UZBEKISTAN</b>		<b>4</b>	<b>0.0%</b>
<b>VENEZUELA</b>		<b>17</b>	<b>0.1%</b>
<b>VIET NAM</b>		<b>2</b>	<b>0.0%</b>
<b>VIETNAM</b>		<b>15</b>	<b>0.1%</b>
<b>VIRGIN ISLANDS, U.S.</b>		<b>6</b>	<b>0.0%</b>
<b>YEMEN</b>		<b>3</b>	<b>0.0%</b>
<b>Grand Total:</b>		<b>12,072</b>	

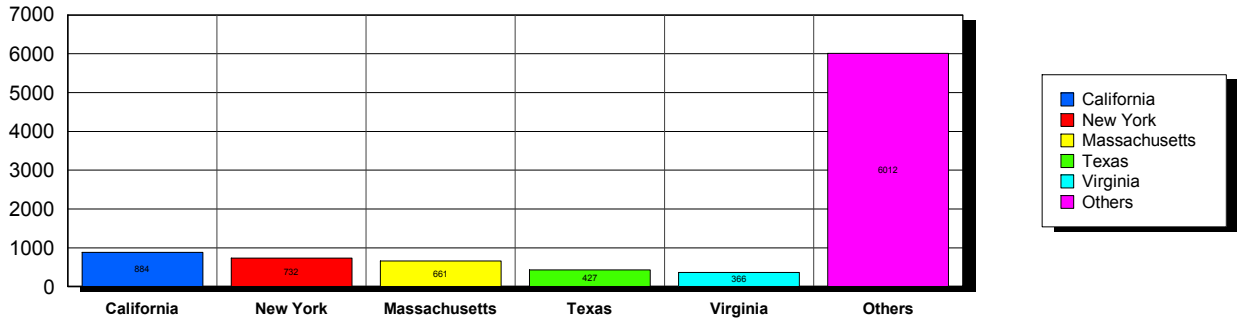
157 distinct countries represented.

1/11/2011

Membership counts by country for members paid through 12/31/2010 or later.

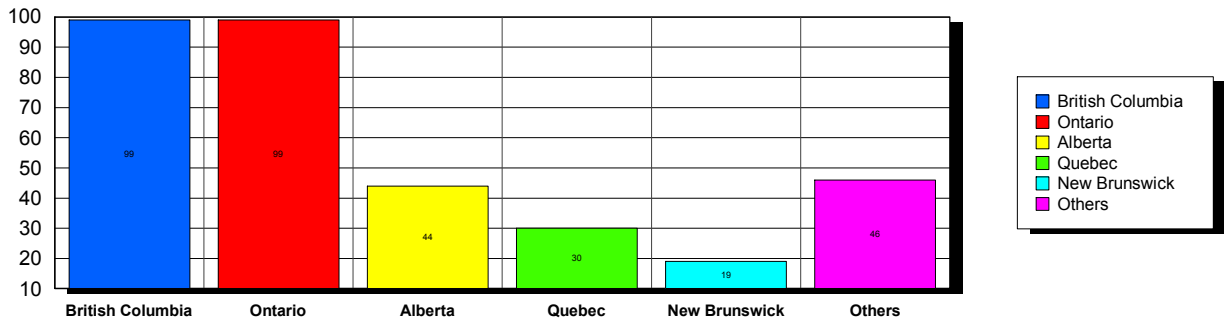
USA

**Top 5 States per Country**

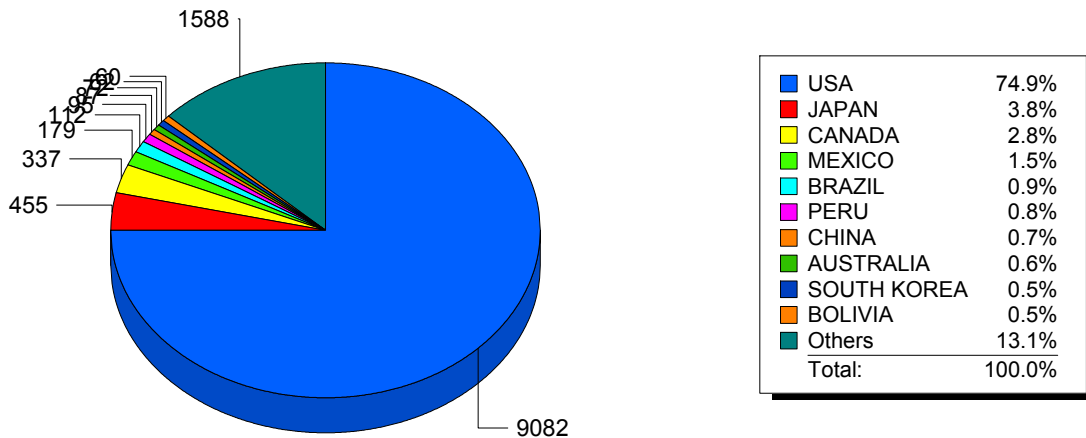


CANADA

**Top 5 States per Country**



**Top 10 Countries**



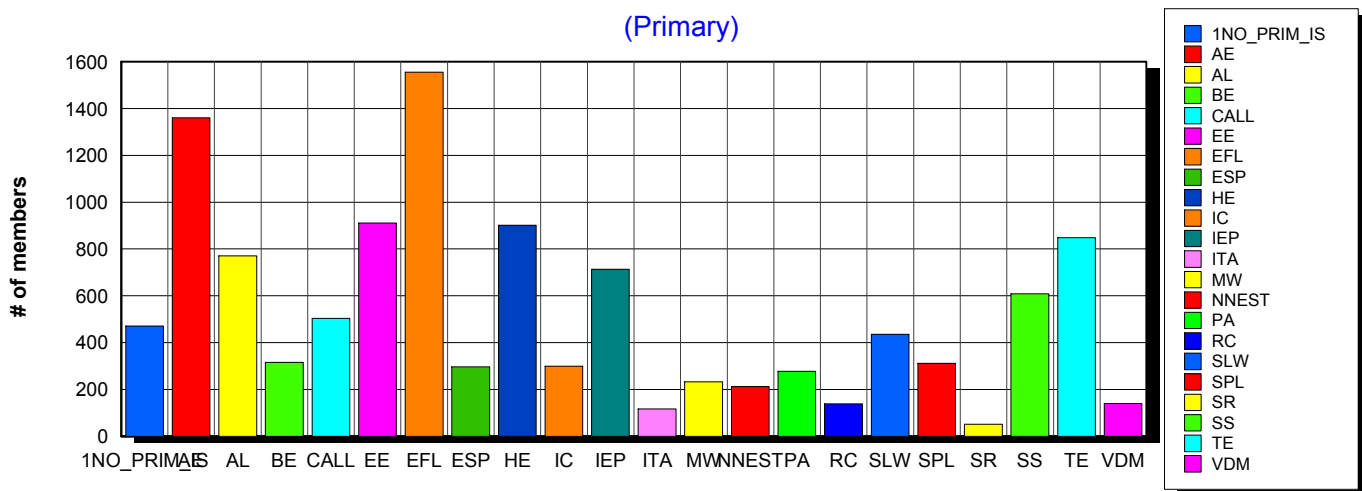
1/11/2011 **Basic statistics on Primary vs. other memberships in interest sections. For members paid through 12/31/2010 or later.**

			<i>Primary versus other</i>	
No Primary Interest Section	1.2%	479	471	8
Adult Education	7.3%	3,025	1,361	1,664
Applied Linguistics	6.1%	2,524	771	1,753
Bilingual Education	4.0%	1,649	316	1,333
Computer-Assisted Language Learning	5.3%	2,206	504	1,702
Elementary Education	4.7%	1,960	911	1,049
English as a Foreign Language	8.2%	3,427	1,555	1,872
English for Specific Purposes	4.4%	1,834	296	1,538
Higher Education	6.1%	2,527	902	1,625
Intercultural Communication	4.8%	1,978	299	1,679
Intensive English Programs	5.4%	2,238	714	1,524
International Teaching Assistants	2.6%	1,092	117	975
Materials Writers	3.5%	1,462	233	1,229
Nonnative English Speakers in TESOL	3.2%	1,327	212	1,115
Program Administration	3.4%	1,414	277	1,137
Refugee Concerns	2.4%	996	139	857
Second Language Writing	5.8%	2,403	436	1,967
Speech, Pronunciation, and Listening	5.2%	2,145	312	1,833
Social Responsibility	2.0%	852	51	801
Secondary Schools	3.9%	1,642	608	1,034
Teacher Education	7.1%	2,952	848	2,104
Video & Digital Media	3.6%	1,507	140	1,367
<i>11,496 distinct members</i>		<b>Total # of IS memberships</b>	<b>41,639</b>	<b>11,473</b>
			<b>30,166</b>	

The total count is the number of IS memberships total and may either be LESS or MORE than the actual number of individual members of TESOL. Due to open access to Interest Sections, these numbers may fluctuate considerably each month. For instance, one member may have selected four interest sections, while some members may belong to none.

### Interest Sections

(Primary)

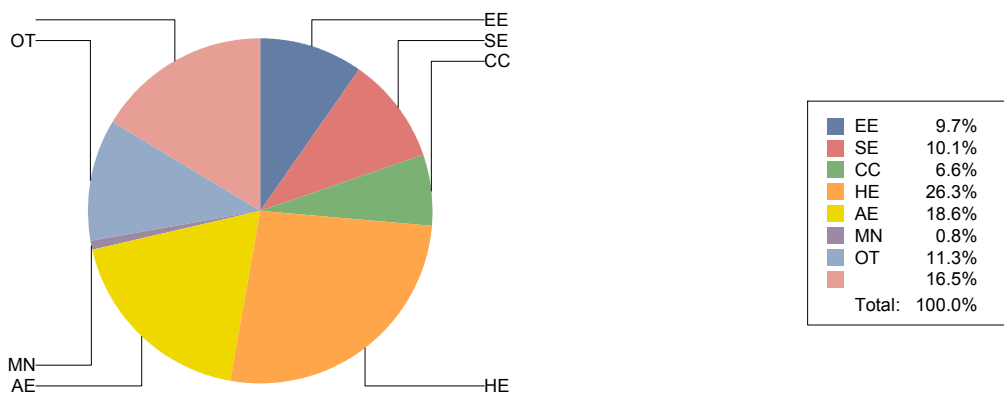


## Basic Statistics on Area of Work (Members paid through >= 12/31/2010)

Elementary Education	EE	1,172	9.7%
Secondary Education	SE	1,220	10.1%
Community/2yr College	CC	795	6.6%
Postsecondary Education	HE	3,170	26.3%
Adult Education	AE	2,245	18.6%
Mainstream	MN	96	0.8%
Other	OT	1,365	11.3%
		<b>1,990</b>	<b>16.5%</b>
		<b>12,053</b>	

Only members who selected an area of work are included on this report. Other members may not have responded to this question and are excluded from the count.

### Areas of Work



(Blanks indicate no response)



## Statistics on Areas of Interest (Members paid through >= 12/31/2010)

<u>CODE</u>	<u>DESCRIPTION</u>	<u>TOTAL*</u>	<u>% of TOTAL*</u>
AE	Adult education	24,324	9%
EFL	English as a Foreign Language	19,804	7%
AL	Alabama	18,950	7%
HE	Higher Education	16,175	6%
IEP	Intensive English Programs	15,955	6%
TE	Teacher Education	15,500	6%
IC	Intercultural Communication	13,592	5%
CALL	Computer-Assisted Language Learning	12,476	5%
EE	Elementary Education	10,480	4%
ESP	English for specific purposes	10,064	4%
PA	Program Administration	9,405	4%
BE	Bilingual education	8,496	3%
SS	Secondary Schools	6,808	3%
SP	Speaking/pronunciation	5,346	2%
OTHER	Other	4,156	2%
CURRICULUM	Materials development/Curriculum	4,147	2%
CERT	TESL/TEFL Certificate Program	4,058	2%
RS	Research	3,918	1%
SLA	Second language acquisition	3,858	1%
RC	Refugee concerns	3,728	1%
ITA	International teaching assistants	3,688	1%
WRITING	Writing/composition	3,682	1%
VI	Video	3,621	1%
CONTENT	Content-based instruction	3,250	1%
PROFDEV	Professional development	2,872	1%
READING	Reading/literacy	2,862	1%
GRAMMAR	Grammar	2,761	1%
ASSESS	Assessment/testing	2,560	1%
BMPEE	BA/MA/MED/PhD/Ed.D in Education	1,985	1%
GRAD	Graduate Student Level	1,964	1%
MPT	MA/PhD in TESOL	1,848	1%
DISTANCE	Distance learning/Online Education	1,726	1%
VOCAB	Vocabulary/Lexicon	1,591	1%
ISKILL	Integrated Skills	1,537	1%
WORKPLACE	Workplace English instruction/Business English	1,502	1%
LISTEN	Listening	1,390	1%
SOCIAL	Social/global/political concerns	1,362	1%
COMMCOLL	Community college/technical ed	1,355	1%
K12EC	K-12 ESL Certification	1,303	0%
LIT	Literature	1,108	0%
MPAL	MA/PhD in Linguistics/Applied Linguistics	973	0%
STANDARDS	Standards	920	0%
LINGUISTICS	Theoretical Linguistics	870	0%
FAMILY	Community/family outreach	852	0%
LDSN	Learning Disorders/Special Needs	684	0%
EMPLOYMENT	Employment issues/Certification	663	0%
NNES	NNES/NES issues	643	0%

MAINSTREAMING	Mainstreaming	602	0%
PUBLICPOLICY	Public policy	581	0%
ARTS	Arts/Media/Science/Math/Social Science	556	0%

Sorted in order of prevalence.

*\* Note: Members are encouraged to choose multiple areas of interest and some members do not choose any areas of interest. The total number of distinct members (9,139) represented in this report is less than the total number of active members as indicated elsewhere in this report.*

*Areas of interest are separate from official TESOL interest sections. Areas of interest represent distinct areas in which a member may be interested, rather than official entities in which a member is involved.*

*Areas of interest which have a very low count may be recent additions to the AOI list, or may reflect overall trends in membership.*

## Statistics on Areas of Expertise (Members paid through >= 12/31/2010)

<u>CODE</u>	<u>DESCRIPTION</u>	<u>TOTAL*</u>	<u>% of TOTAL*</u>
AE	American Embassy	24,324	9%
EFL	English as a Foreign Language	19,804	7%
AL	Applied Linguistics	18,950	7%
HE	ESL in Higher Education	16,175	6%
IEP	Intensive English Programs	15,955	6%
TE	Teacher Education	15,500	6%
IC	Intercultural Communication	13,592	5%
CALL	Computer-Assisted Language Learning	12,476	5%
EE	Elementary Education	10,480	4%
ESP	English for Specific Purposes	10,064	4%
PA	Program Administration	9,405	4%
BE	Bilingual education	8,496	3%
SS	ESL in Secondary Schools	6,808	3%
SP	Speaking/pronunciation	5,346	2%
OTHER	Other Groups	4,156	2%
CURRICULUM	Materials development/Curriculum	4,147	2%
CERT	TESL/TEFL Certificate Program	4,058	2%
RS	Research	3,918	1%
SLA	Second language acquisition	3,858	1%
RC	Refugee Concerns	3,728	1%
ITA	International teaching assistants	3,688	1%
WRITING	Writing/composition	3,682	1%
VI	Video	3,621	1%
CONTENT	Content-based instruction	3,250	1%
PROFDEV	Professional development	2,872	1%
READING	Reading/literacy	2,862	1%
GRAMMAR	Grammar	2,761	1%
ASSESS	Assessment/testing	2,560	1%
BMPEE	BA/MA/MED/PhD/Ed.D in Education	1,985	1%
GRAD	Graduate Student Level	1,964	1%
MPT	MA/PhD in TESOL	1,848	1%
DISTANCE	Distance learning/Online Education	1,726	1%
VOCAB	Vocabulary/Lexicon	1,591	1%
ISKILL	Integrated Skills	1,537	1%
WORKPLACE	Workplace English instruction/Business English	1,502	1%
LISTEN	Listening	1,390	1%
SOCIAL	Social/global/political concerns	1,362	1%
COMMCOLL	Community college/technical ed	1,355	1%
K12EC	K-12 ESL Certification	1,303	0%
LIT	Literature	1,108	0%
MPAL	MA/PhD in Linguistics/Applied Linguistics	973	0%
STANDARDS	Standards	920	0%
LINGUISTICS	Theoretical Linguistics	870	0%
FAMILY	Community/family outreach	852	0%
LDSN	Learning Disorders/Special Needs	684	0%
EMPLOYMENT	Employment issues/Certification	663	0%
NNES	NNES/NES issues	643	0%

MAINSTREAMING	Mainstreaming	602	0%
PUBLICPOLICY	Public policy	581	0%
ARTS	Arts/Media/Science/Math/Social Science	556	0%

Sorted in order of prevalence.

*\* Note: Members are encouraged to choose multiple areas of expertise and some members do not choose any areas of expertise. The total number of distinct members (9,139) represented in this report is less than the total number of active members as indicated elsewhere in this report.*

*Areas of Expertise are separate from official TESOL interest sections or Areas of Interest. Areas of expertise represent distinct areas in which a member may be experienced in, rather than official entities in which a member is involved.*

*Areas of interest which have a very low count may be recent additions to the AOI list, or may reflect overall trends in membership.*