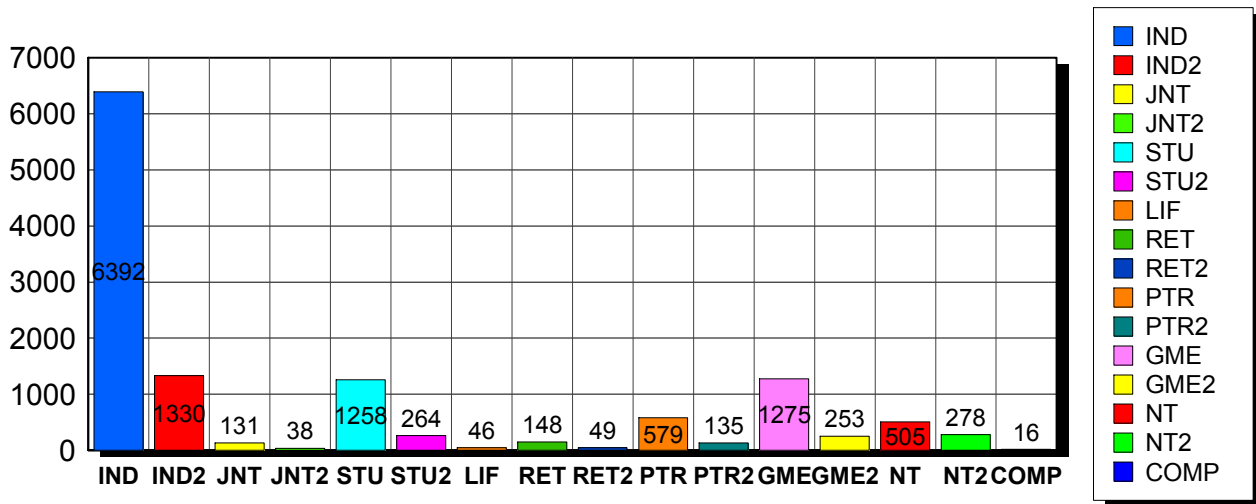


2/8/2011

Membership Statistics: Grand totals for basic membership, by member type

		<u># Memberships</u>	<u># Members</u>
IND	BASIC	6,392	6,392
IND2	BASIC	1,330	1,330
JNT	BASIC	131	262
JNT2	BASIC	38	76
STU	BASIC	1,258	1,258
STU2	BASIC	264	264
LIF	BASIC	46	46
RET	BASIC	148	148
RET2	BASIC	49	49
PTR	BASIC	579	579
PTR2	BASIC	135	135
GME	BASIC	1,275	1,275
GME2	BASIC	253	253
NT	BASIC	505	505
NT2	BASIC	278	278
COMP	BASIC	16	16
Grand Total:		12,697	12,866

Member Types



Note: in all general statistic reports, joint household memberships are treated as "one" member EXCEPT in the second column of this report, where joints are counted as two people, providing the most accurate count of the number of TESOL members.

This report is based on members paid through 1/31/2011 or later.

Country/State/Province	Total	
AFGHANISTAN	3	0.0%
ALBANIA	11	0.1%
ALGERIA	19	0.1%
AMERICAN SAMOA	1	0.0%
ANGOLA	2	0.0%
ARGENTINA	33	0.3%
ARMENIA	5	0.0%
AUSTRALIA	74	0.6%
AUSTRIA	3	0.0%
AZERBAIJAN	4	0.0%
BAHRAIN	11	0.1%
BANGLADESH	24	0.2%
BELGIUM	2	0.0%
BENIN	1	0.0%
BOLIVIA	61	0.5%
BOSNIA AND HERZEGOVINA	1	0.0%
BOTSWANA	2	0.0%
BRAZIL	117	0.9%
BRUNEI DARUSSALAM	1	0.0%
BULGARIA	1	0.0%
BURKINA FASO	4	0.0%
CAMBODIA	5	0.0%
CAMEROON	14	0.1%
Canada	1	0.0%
CANADA		
<i>CANADA</i>	<i>2</i>	
<i>CANADA Alberta</i>	<i>49</i>	
<i>CANADA British Columbia</i>	<i>116</i>	
<i>CANADA Manitoba</i>	<i>20</i>	
<i>CANADA New Brunswick</i>	<i>22</i>	
<i>CANADA Newfoundland</i>	<i>4</i>	
<i>CANADA Nova Scotia</i>	<i>12</i>	
<i>CANADA Ontario</i>	<i>111</i>	
<i>CANADA Prince Edward Island</i>	<i>2</i>	
<i>CANADA Quebec</i>	<i>30</i>	
<i>CANADA Saskatchewan</i>	<i>8</i>	
<i>CANADA Yukon Territory</i>	<i>1</i>	
CANADA	377	3.0%
CAPE VERDE	1	0.0%
CAYMAN ISLANDS	1	0.0%
CENTRAL AFRICAN REPUBLIC	1	0.0%
CHILE	24	0.2%
CHINA	89	0.7%
COLOMBIA	37	0.3%
COSTA RICA	28	0.2%
COTE D'IVOIRE	2	0.0%
CROATIA	7	0.1%
CYPRUS	3	0.0%
CZECH REPUBLIC	6	0.0%
DENMARK	2	0.0%
DOMINICAN REPUBLIC	16	0.1%
EAST TIMOR	1	0.0%
ECUADOR	37	0.3%
EGYPT	27	0.2%
EL SALVADOR	5	0.0%
ESTONIA	1	0.0%
ETHIOPIA	2	0.0%

FINLAND	6	0.0%
FRANCE	13	0.1%
GEORGIA	4	0.0%
GERMANY	25	0.2%
GHANA	1	0.0%
GREECE	15	0.1%
GUAM	1	0.0%
GUATEMALA	18	0.1%
HAITI	14	0.1%
HONDURAS	9	0.1%
HONG KONG	14	0.1%
HONG KONG SAR CHINA	27	0.2%
HUNGARY	3	0.0%
ICELAND	3	0.0%
INDIA	24	0.2%
INDONESIA	33	0.3%
IRAN	24	0.2%
IRAN, ISLAMIC REPUBLIC OF	2	0.0%
IRAQ	14	0.1%
IRELAND	4	0.0%
ISRAEL	20	0.2%
ITALY	24	0.2%
JAMAICA	1	0.0%
JAPAN	467	3.7%
JORDAN	7	0.1%
KAZAKHSTAN	7	0.1%
KOREA, REPUBLIC OF	38	0.3%
KOSOVO (UNMIK)	2	0.0%
KUWAIT	19	0.1%
KYRGYZSTAN	4	0.0%
LAOS	11	0.1%
LATVIA	1	0.0%
LEBANON	9	0.1%
LIBYA	6	0.0%
LITHUANIA	3	0.0%
MACAO	5	0.0%
MACEDONIA	3	0.0%
MADAGASCAR	7	0.1%
MALAYSIA	22	0.2%
MALDIVES	2	0.0%
MALTA	1	0.0%
MARSHALL ISLANDS	4	0.0%
MARTINIQUE	1	0.0%
MAURITIUS	1	0.0%
MEXICO	192	1.5%
MICRONESIA, FED STATES OF	1	0.0%
MOLDOVA, REPUBLIC OF	4	0.0%
MONGOLIA	9	0.1%
MONTENEGRO	1	0.0%
MOROCCO	32	0.3%
MOZAMBIQUE	1	0.0%
MYANMAR	1	0.0%
NAMIBIA	1	0.0%
NEPAL	6	0.0%
NETHERLANDS	8	0.1%
NEW ZEALAND	13	0.1%
NICARAGUA	6	0.0%
NIGER	1	0.0%
NIGERIA	1	0.0%
NORWAY	3	0.0%
OMAN	10	0.1%

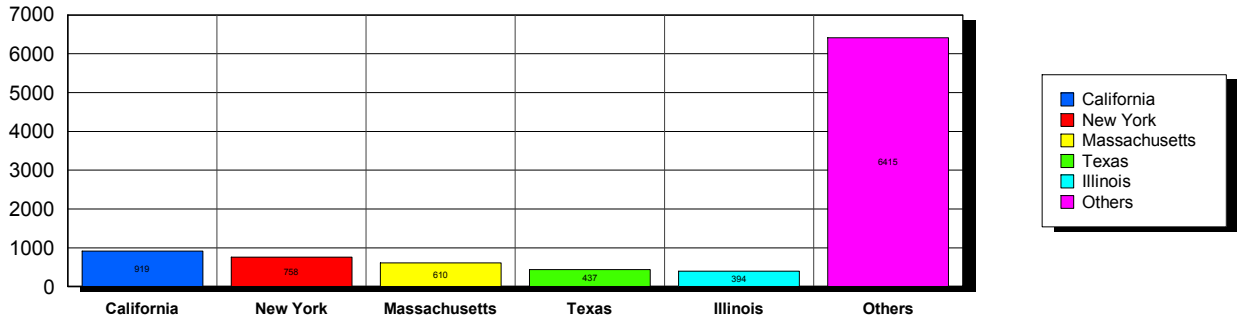
PAKISTAN	4	0.0%
PALAU	2	0.0%
PALESTINIAN TERRITORY	2	0.0%
PANAMA	37	0.3%
PARAGUAY	3	0.0%
PEOPLES REP OF CHINA	61	0.5%
PERU	97	0.8%
PHILIPPINES	44	0.3%
POLAND	9	0.1%
PORTUGAL	1	0.0%
OATAR	29	0.2%
ROMANIA	2	0.0%
RUSSIA	41	0.3%
RUSSIAN FEDERATION	7	0.1%
RWANDA	3	0.0%
SAO TOME AND PRINCIPE	1	0.0%
SAUDI ARABIA	51	0.4%
SENEGAL	8	0.1%
SERBIA	5	0.0%
SIERRA LEONE	1	0.0%
SINGAPORE	17	0.1%
SLOVAKIA	1	0.0%
SOUTH AFRICA	5	0.0%
SOUTH KOREA	67	0.5%
SPAIN	21	0.2%
SRI LANKA	2	0.0%
SUDAN	5	0.0%
SWAZILAND	1	0.0%
SWEDEN	9	0.1%
SWITZERLAND	9	0.1%
SYRIAN ARAB REPUBLIC	4	0.0%
TAIWAN	29	0.2%
TAIWAN ROC	50	0.4%
TAIWAN, PROVINCE OF CHINA	1	0.0%
TAJKISTAN	3	0.0%
THAILAND	39	0.3%
TOGO	1	0.0%
TRINIDAD AND TOBAGO	3	0.0%
TUNISIA	7	0.1%
TURKEY	49	0.4%
TURKMENISTAN	1	0.0%
UGANDA	1	0.0%
UKRAINE	12	0.1%
UNITED ARAB EMIRATES	56	0.4%
UNITED KINGDOM	54	0.4%
URUGUAY	16	0.1%
US MINOR OUTLYING ISLANDS	4	0.0%
USA		
USA	36	
USA	Alabama	84
USA	Alaska	30
USA	American Embassy	24
USA	Arizona	199
USA	Arkansas	96
USA	Armed Forces	13
USA	Armed Frces Americas	2
USA	British Columbia	2
USA	California	917
USA	Colorado	200
USA	Connecticut	198
USA	Delaware	25

USA	District of Columbia	148	
USA	Florida	377	
USA	Georgia	231	
USA	Guam	5	
USA	Hawaii	75	
USA	Idaho	29	
USA	Illinois	390	
USA	Indiana	170	
USA	Iowa	117	
USA	Kansas	94	
USA	Kentucky	74	
USA	Louisiana	81	
USA	Maine	50	
USA	Marshall Islands	1	
USA	Maryland	322	
USA	Massachusetts	606	
USA	Michigan	218	
USA	Minnesota	179	
USA	Mississippi	69	
USA	Missouri	165	
USA	Montana	15	
USA	N Mariana Islands	1	
USA	Nebraska	53	
USA	Nevada	54	
USA	New Hampshire	93	
USA	New Jersey	278	
USA	New Mexico	65	
USA	New York	755	
USA	North Carolina	163	
USA	North Dakota	21	
USA	Ohio	233	
USA	Oklahoma	57	
USA	Ontario	4	
USA	Oregon	192	
USA	Pennsylvania	355	
USA	Puerto Rico	57	
USA	Rhode Island	108	
USA	South Carolina	59	
USA	South Dakota	8	
USA	Tennessee	106	
USA	Texas	440	
USA	Utah	120	
USA	Vermont	96	
USA	Virginia	389	
USA	Washington	301	
USA	West Virginia	29	
USA	Wisconsin	198	
USA	Wyoming	23	
USA		9,500	74.8%
UZBEKISTAN		4	0.0%
VENEZUELA		16	0.1%
VIET NAM		2	0.0%
VIETNAM		15	0.1%
VIRGIN ISLANDS, U.S.		9	0.1%
YEMEN		4	0.0%
Grand Total:		12,701	

159 distinct countries represented.

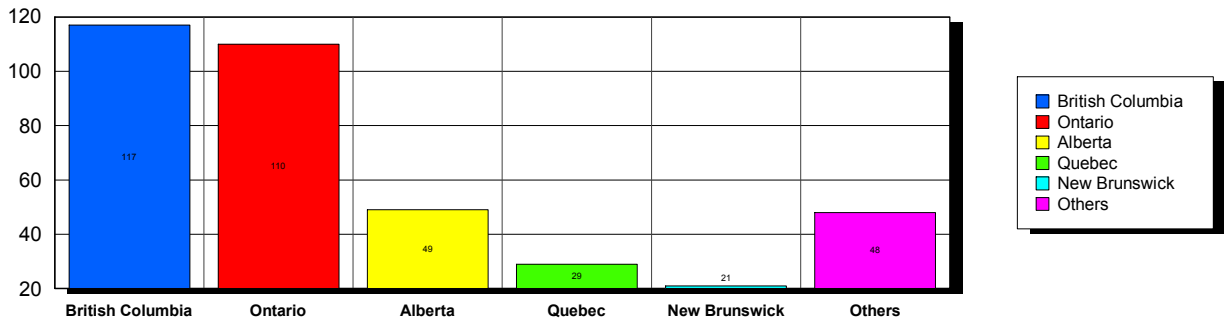
USA

Top 5 States per Country

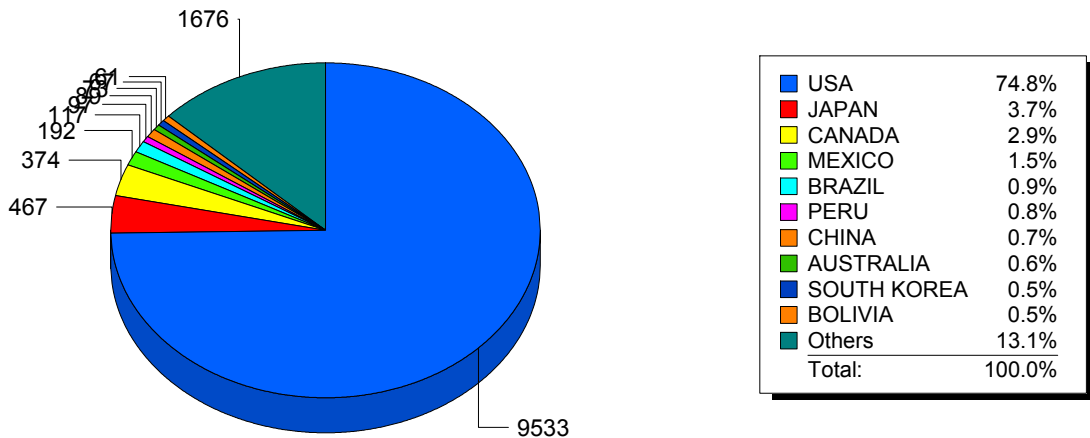


CANADA

Top 5 States per Country



Top 10 Countries



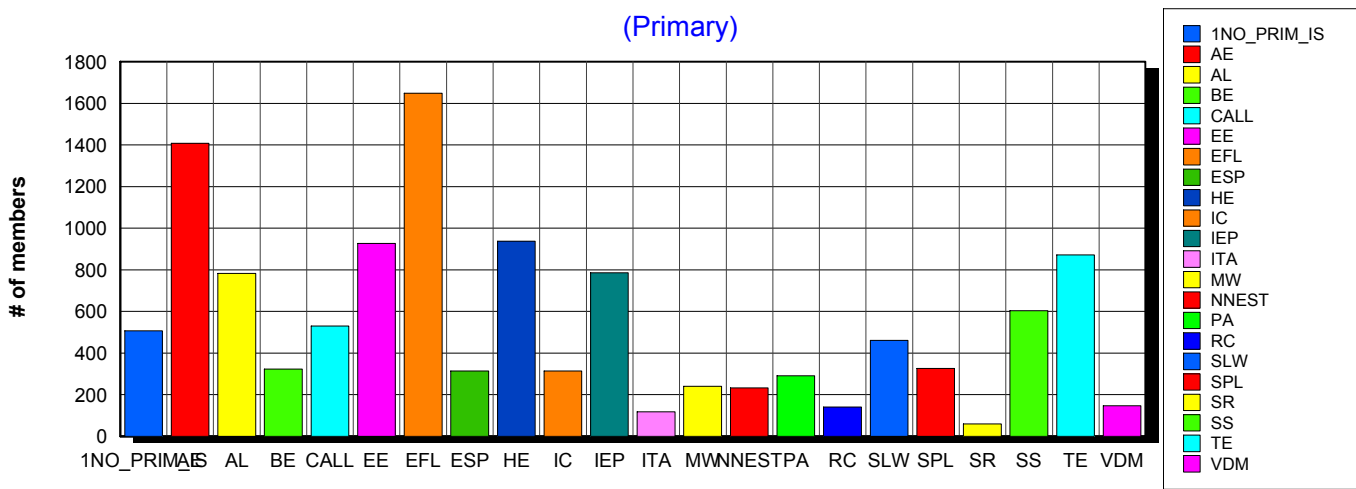
Basic statistics on Primary vs. other memberships in interest sections. For members paid through 1/31/2011 or later.

			<i>Primary versus other</i>		
No Primary Interest Section	1.2%	518	507	11	
Adult Education	7.3%	3,201	1,408	1,793	
Applied Linguistics	6.1%	2,676	782	1,894	
Bilingual Education	3.9%	1,731	323	1,408	
Computer-Assisted Language Learning	5.3%	2,315	529	1,786	
Elementary Education	4.6%	2,029	926	1,103	
English as a Foreign Language	8.2%	3,618	1,648	1,970	
English for Specific Purposes	4.4%	1,952	313	1,639	
Higher Education	6.0%	2,646	938	1,708	
Intercultural Communication	4.7%	2,075	313	1,762	
Intensive English Programs	5.5%	2,420	786	1,634	
International Teaching Assistants	2.6%	1,131	117	1,014	
Materials Writers	3.5%	1,528	240	1,288	
Nonnative English Speakers in TESOL	3.2%	1,426	232	1,194	
Program Administration	3.4%	1,483	290	1,193	
Refugee Concerns	2.4%	1,067	141	926	
Second Language Writing	5.8%	2,540	460	2,080	
Speech, Pronunciation, and Listening	5.2%	2,271	326	1,945	
Social Responsibility	2.1%	917	59	858	
Secondary Schools	3.8%	1,681	603	1,078	
Teacher Education	7.0%	3,071	871	2,200	
Video & Digital Media	3.7%	1,603	146	1,457	
<i>11,985 distinct members</i>		Total # of IS memberships	43,899	11,958	31,941

The total count is the number of IS memberships total and may either be LESS or MORE than the actual number of individual members of TESOL. Due to open access to Interest Sections, these numbers may fluctuate considerably each month. For instance, one member may have selected four interest sections, while some members may belong to none.

Interest Sections

(Primary)

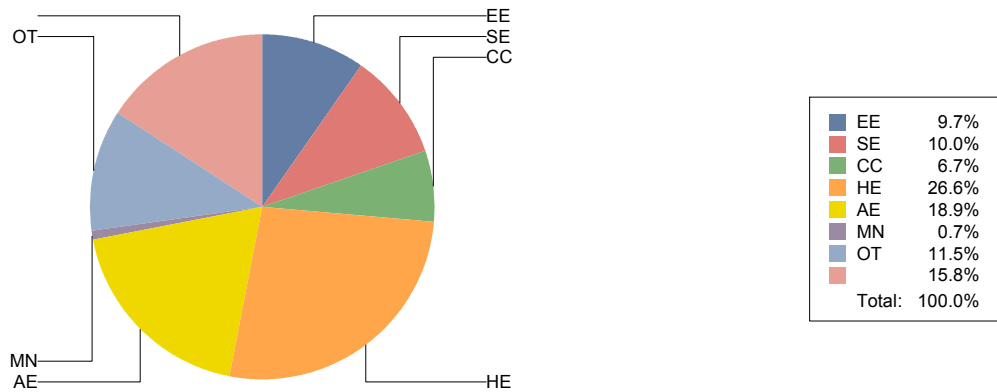


Basic Statistics on Area of Work (Members paid through >= 1/31/2011)

Elementary Education	EE	1,225	9.7%
Secondary Education	SE	1,264	10.0%
Community/2yr College	CC	843	6.7%
Postsecondary Education	HE	3,362	26.6%
Adult Education	AE	2,387	18.9%
Mainstream	MN	89	0.7%
Other	OT	1,451	11.5%
		2,000	15.8%
		12,621	

Only members who selected an area of work are included on this report. Other members may not have responded to this question and are excluded from the count.

Areas of Work



(Blanks indicate no response)

Statistics on Areas of Interest (Members paid through >= 1/31/2011)

<u>CODE</u>	<u>DESCRIPTION</u>	<u>TOTAL*</u>	<u>% of TOTAL*</u>
EFL	English as a foreign language	3,208	5%
CURRICULUM	Materials development/Curriculum	2,942	4%
SLA	Second language acquisition	2,888	4%
TE	Teacher education	2,837	4%
AL	Applied linguistics	2,689	4%
IC	Multiculturalism/intercultural communications	2,659	4%
AE	Adult education	2,647	4%
WRITING	Writing/composition	2,571	4%
CALL	Technology in education	2,489	4%
CONTENT	Content-based instruction	2,371	3%
HE	Higher education	2,278	3%
IEP	Intensive English programs	2,218	3%
PROFDEV	Professional development	2,214	3%
READING	Reading/literacy	2,189	3%
SP	Speaking/pronunciation	2,061	3%
ASSESS	Assessment/testing	1,968	3%
GRAMMAR	Grammar	1,956	3%
ESP	English for specific purposes	1,831	3%
BE	Bilingual education	1,616	2%
RS	Research	1,588	2%
DISTANCE	Distance learning/Online Education	1,356	2%
VOCAB	Vocabulary/Lexicon	1,336	2%
PA	Program administration	1,310	2%
EE	Elementary/primary education	1,292	2%
SS	Secondary education	1,152	2%
SOCIAL	Social/global/political concerns	1,151	2%
WORKPLACE	Workplace English instruction/Business English	1,118	2%
ISKILL	Integrated Skills	1,109	2%
LISTEN	Listening	1,075	2%
VI	Video and digital media	1,048	2%
COMMCOLL	Community college/technical ed	915	1%
RC	Refugee concerns	826	1%
LIT	Literature	813	1%
STANDARDS	Standards	774	1%
LINGUISTICS	Theoretical Linguistics	741	1%
ITA	International teaching assistants	737	1%
FAMILY	Community/family outreach	686	1%
EMPLOYMENT	Employment issues/Certification	572	1%
LDSN	Learning Disorders/Special Needs	559	1%
PUBLICPOLICY	Public policy	517	1%
NNES	NNES/NES issues	482	1%
MAINSTREAMING	Mainstreaming	470	1%
ARTS	Arts/Media/Science/Math/Social Science	384	1%
ACCRED	Accreditation	371	1%
STYLISTICS	Stylistics	153	0%

Sorted in order of prevalence.

** Note: Members are encouraged to choose multiple areas of interest and some members do not choose any areas of interest. The total number of distinct members (9,232) represented in this report is less than the total number of active members as indicated elsewhere in this report.*

Areas of interest are separate from official TESOL interest sections. Areas of interest represent distinct areas in which a member may be interested, rather than official entities in which a member is involved.

Areas of interest which have a very low count may be recent additions to the AOI list, or may reflect overall trends in membership.

Statistics on Areas of Expertise (Members paid through >= 1/31/2011)

<u>CODE</u>	<u>DESCRIPTION</u>	<u>TOTAL*</u>	<u>% of TOTAL*</u>
EFL	English as a foreign language	1,997	7%
AE	Adult education	1,665	6%
CURRICULUM	Materials development/Curriculum	1,411	5%
WRITING	Writing/composition	1,340	5%
AL	Applied linguistics	1,287	4%
IEP	Intensive English programs	1,207	4%
TE	Teacher education	1,196	4%
SLA	Second language acquisition	1,183	4%
HE	Higher education	1,118	4%
CONTENT	Content-based instruction	1,037	4%
GRAMMAR	Grammar	994	3%
IC	Multiculturalism/intercultural communications	927	3%
EE	Elementary/primary education	882	3%
READING	Reading/literacy	825	3%
ESP	English for specific purposes	812	3%
CALL	Technology in education	800	3%
SP	Speaking/pronunciation	775	3%
PROFDEV	Professional development	774	3%
ASSESS	Assessment/testing	716	2%
PA	Program administration	662	2%
SS	Secondary education	586	2%
BE	Bilingual education	583	2%
ISKILL	Integrated Skills	564	2%
COMMCOLL	Community college/technical ed	514	2%
DISTANCE	Distance learning/Online Education	460	2%
WORKPLACE	Workplace English instruction/Business English	457	2%
RS	Research	436	2%
LISTEN	Listening	401	1%
LIT	Literature	372	1%
VOCAB	Vocabulary/Lexicon	360	1%
SOCIAL	Social/global/political concerns	291	1%
VI	Video and digital media	232	1%
FAMILY	Community/family outreach	210	1%
ITA	International teaching assistants	208	1%
ARTS	Arts/Media/Science/Math/Social Science	200	1%
NNES	NNES/NES issues	200	1%
ACCRED	Accreditation	179	1%
STANDARDS	Standards	179	1%
RC	Refugee concerns	162	1%
LINGUISTICS	Theoretical Linguistics	158	1%
MAINSTREAMING	Mainstreaming	157	1%
LDSN	Learning Disorders/Special Needs	152	1%
EMPLOYMENT	Employment issues/Certification	128	0%
PUBLICPOLICY	Public policy	97	0%
STYLISTICS	Stylistics	25	0%

Sorted in order of prevalence.

** Note: Members are encouraged to choose multiple areas of expertise and some members do not choose any areas of expertise. The total number of distinct members (7,152) represented in this report is less than the total number of active members as indicated elsewhere in this report.*

Areas of Expertise are separate from official TESOL interest sections or Areas of Interest. Areas of expertise represent distinct areas in which a member may be experienced in, rather than official entities in which a member is involved.

Areas of interest which have a very low count may be recent additions to the AOI list, or may reflect overall trends in membership.