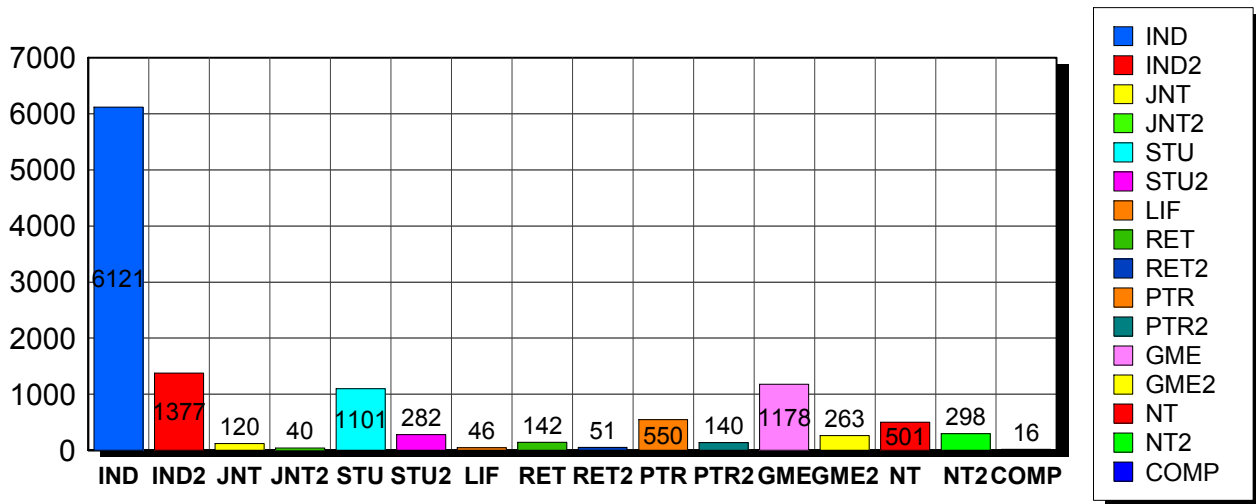


3/9/2011

Membership Statistics: Grand totals for basic membership, by member type

		<u># Memberships</u>	<u># Members</u>
IND	BASIC	6,121	6,121
IND2	BASIC	1,377	1,377
JNT	BASIC	120	240
JNT2	BASIC	40	80
STU	BASIC	1,101	1,101
STU2	BASIC	282	282
LIF	BASIC	46	46
RET	BASIC	142	142
RET2	BASIC	51	51
PTR	BASIC	550	550
PTR2	BASIC	140	140
GME	BASIC	1,178	1,178
GME2	BASIC	263	263
NT	BASIC	501	501
NT2	BASIC	298	298
COMP	BASIC	16	16
Grand Total:		12,226	12,386

Member Types



Note: in all general statistic reports, joint household memberships are treated as "one" member EXCEPT in the second column of this report, where joints are counted as two people, providing the most accurate count of the number of TESOL members.

This report is based on members paid through 2/28/2011 or later.

Country/State/Province	Total	
AFGHANISTAN	3	0.0%
ALBANIA	11	0.1%
ALGERIA	6	0.0%
AMERICAN SAMOA	1	0.0%
ANGOLA	2	0.0%
ARGENTINA	32	0.3%
ARMENIA	5	0.0%
AUSTRALIA	75	0.6%
AUSTRIA	3	0.0%
AZERBAIJAN	3	0.0%
BAHRAIN	10	0.1%
BANGLADESH	24	0.2%
BELARUS	2	0.0%
BELGIUM	2	0.0%
BENIN	1	0.0%
BOLIVIA	63	0.5%
BOSNIA AND HERZEGOVINA	1	0.0%
BOTSWANA	2	0.0%
BRAZIL	116	0.9%
BRUNEI DARUSSALAM	1	0.0%
BULGARIA	1	0.0%
BURKINA FASO	4	0.0%
CAMBODIA	3	0.0%
CAMEROON	13	0.1%
Canada	1	0.0%
CANADA		
<i>CANADA</i>	<i>1</i>	
<i>CANADA</i>	<i>Alberta</i>	<i>55</i>
<i>CANADA</i>	<i>British Columbia</i>	<i>110</i>
<i>CANADA</i>	<i>Manitoba</i>	<i>22</i>
<i>CANADA</i>	<i>New Brunswick</i>	<i>20</i>
<i>CANADA</i>	<i>Newfoundland</i>	<i>3</i>
<i>CANADA</i>	<i>Nova Scotia</i>	<i>11</i>
<i>CANADA</i>	<i>Ontario</i>	<i>115</i>
<i>CANADA</i>	<i>Prince Edward Island</i>	<i>2</i>
<i>CANADA</i>	<i>Quebec</i>	<i>24</i>
<i>CANADA</i>	<i>Saskatchewan</i>	<i>11</i>
<i>CANADA</i>	<i>Yukon Territory</i>	<i>1</i>
CANADA	375	3.1%
CAPE VERDE	1	0.0%
CAYMAN ISLANDS	1	0.0%
CENTRAL AFRICAN REPUBLIC	1	0.0%
CHILE	24	0.2%
CHINA	83	0.7%
COLOMBIA	31	0.3%
COSTA RICA	15	0.1%
COTE D'IVOIRE	2	0.0%
CROATIA	7	0.1%
CYPRUS	3	0.0%
CZECH REPUBLIC	7	0.1%
DENMARK	2	0.0%
DOMINICAN REPUBLIC	13	0.1%
EAST TIMOR	1	0.0%
ECUADOR	34	0.3%
EGYPT	27	0.2%
EL SALVADOR	5	0.0%
ESTONIA	1	0.0%

ETHIOPIA	2	0.0%
FINLAND	6	0.0%
FRANCE	12	0.1%
GEORGIA	4	0.0%
GERMANY	25	0.2%
GHANA	1	0.0%
GREECE	12	0.1%
GUATEMALA	10	0.1%
HAITI	13	0.1%
HONDURAS	8	0.1%
HONG KONG	13	0.1%
HONG KONG SAR CHINA	26	0.2%
HUNGARY	3	0.0%
INDIA	24	0.2%
INDONESIA	34	0.3%
IRAN	24	0.2%
IRAN, ISLAMIC REPUBLIC OF	2	0.0%
IRAO	13	0.1%
IRELAND	3	0.0%
ISRAEL	19	0.2%
ITALY	23	0.2%
JAMAICA	1	0.0%
JAPAN	440	3.6%
JORDAN	7	0.1%
KAZAKHSTAN	9	0.1%
KENYA	1	0.0%
KOREA, REPUBLIC OF	38	0.3%
KOSOVO (UNMIK)	2	0.0%
KUWAIT	20	0.2%
KYRGYZSTAN	4	0.0%
LAOS	11	0.1%
LATVIA	1	0.0%
LEBANON	8	0.1%
LIBYA	6	0.0%
LITHUANIA	3	0.0%
MACAO	5	0.0%
MACEDONIA	3	0.0%
MADAGASCAR	7	0.1%
MALAYSIA	21	0.2%
MALDIVES	2	0.0%
MARSHALL ISLANDS	4	0.0%
MARTINIQUE	1	0.0%
MAURITIUS	1	0.0%
MEXICO	175	1.4%
MICRONESIA, FED STATES OF	1	0.0%
MOLDOVA, REPUBLIC OF	4	0.0%
MONGOLIA	13	0.1%
MONTENEGRO	1	0.0%
MOROCCO	31	0.3%
MOZAMBIOUE	1	0.0%
MYANMAR	1	0.0%
NAMIBIA	1	0.0%
NEPAL	6	0.0%
NETHERLANDS	7	0.1%
NEW ZEALAND	13	0.1%
NICARAGUA	6	0.0%
NIGER	1	0.0%
NIGERIA	1	0.0%
NORWAY	4	0.0%
OMAN	10	0.1%
PAKISTAN	4	0.0%

PALAU	2	0.0%
PALESTINIAN TERRITORY	2	0.0%
PANAMA	32	0.3%
PARAGUAY	2	0.0%
PEOPLES REP OF CHINA	62	0.5%
PERU	89	0.7%
PHILIPPINES	42	0.3%
POLAND	8	0.1%
PORTUGAL	1	0.0%
OATAR	29	0.2%
ROMANIA	3	0.0%
RUSSIA	43	0.4%
RUSSIAN FEDERATION	7	0.1%
RWANDA	3	0.0%
SAO TOME AND PRINCIPE	1	0.0%
SAUDI ARABIA	54	0.4%
SENEGAL	7	0.1%
SERBIA	4	0.0%
SIERRA LEONE	1	0.0%
SINGAPORE	18	0.1%
SLOVAKIA	1	0.0%
SOUTH AFRICA	7	0.1%
SOUTH KOREA	62	0.5%
SPAIN	20	0.2%
SRI LANKA	2	0.0%
SUDAN	5	0.0%
SWAZILAND	1	0.0%
SWEDEN	7	0.1%
SWITZERLAND	7	0.1%
SYRIAN ARAB REPUBLIC	4	0.0%
TAIWAN	25	0.2%
TAIWAN ROC	46	0.4%
TAIWAN, PROVINCE OF CHINA	1	0.0%
TAJKISTAN	3	0.0%
THAILAND	38	0.3%
TOGO	1	0.0%
TRINIDAD AND TOBAGO	3	0.0%
TUNISIA	6	0.0%
TURKEY	42	0.3%
TURKMENISTAN	1	0.0%
UGANDA	1	0.0%
UKRAINE	10	0.1%
UNITED ARAB EMIRATES	57	0.5%
UNITED KINGDOM	56	0.5%
URUGUAY	15	0.1%
US MINOR OUTLYING ISLANDS	6	0.0%
USA		
USA	40	
USA	Alabama	93
USA	Alaska	30
USA	American Embassy	23
USA	Arizona	192
USA	Arkansas	91
USA	Armed Forces	10
USA	Armed Frces Americas	2
USA	British Columbia	2
USA	California	901
USA	Colorado	180
USA	Connecticut	186
USA	Delaware	28
USA	District of Columbia	160

USA	Florida	382	
USA	Georgia	230	
USA	Guam	5	
USA	Hawaii	75	
USA	Idaho	28	
USA	Illinois	391	
USA	Indiana	166	
USA	Iowa	109	
USA	Kansas	94	
USA	Kentucky	68	
USA	Louisiana	93	
USA	Maine	40	
USA	Marshall Islands	1	
USA	Maryland	309	
USA	Massachusetts	505	
USA	Michigan	215	
USA	Minnesota	170	
USA	Mississippi	66	
USA	Missouri	160	
USA	Montana	14	
USA	Nebraska	39	
USA	Nevada	67	
USA	New Hampshire	79	
USA	New Jersey	274	
USA	New Mexico	61	
USA	New York	726	
USA	North Carolina	164	
USA	North Dakota	21	
USA	Ohio	227	
USA	Oklahoma	54	
USA	Ontario	5	
USA	Oregon	197	
USA	Pennsylvania	336	
USA	Puerto Rico	57	
USA	Rhode Island	94	
USA	South Carolina	60	
USA	South Dakota	10	
USA	Tennessee	102	
USA	Texas	445	
USA	Utah	113	
USA	Vermont	79	
USA	Virginia	366	
USA	Washington	279	
USA	West Virginia	30	
USA	Wisconsin	199	
USA	Wyoming	25	
USA		9,168	75.0%
UZBEKISTAN		4	0.0%
VENEZUELA		19	0.2%
VIET NAM		1	0.0%
VIETNAM		16	0.1%
VIRGIN ISLANDS, U.S.		8	0.1%
YEMEN		4	0.0%
Grand Total:		12,227	

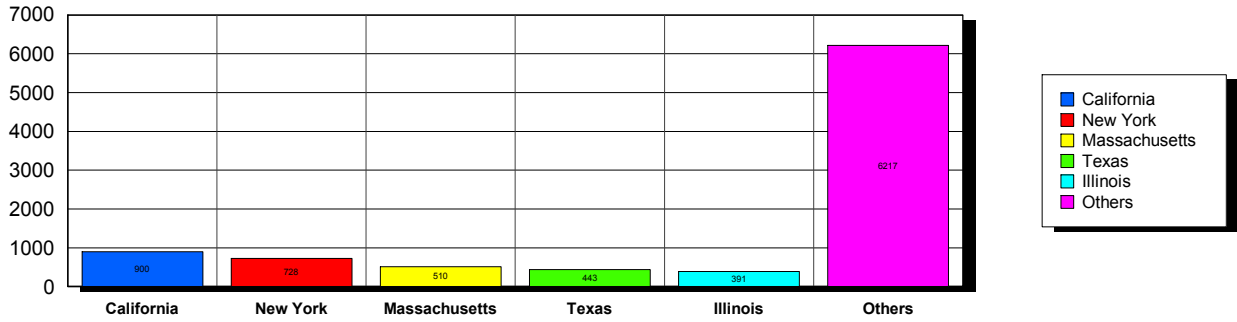
158 distinct countries represented.

3/9/2011

Membership counts by country for members paid through 02/28/2011 or later.

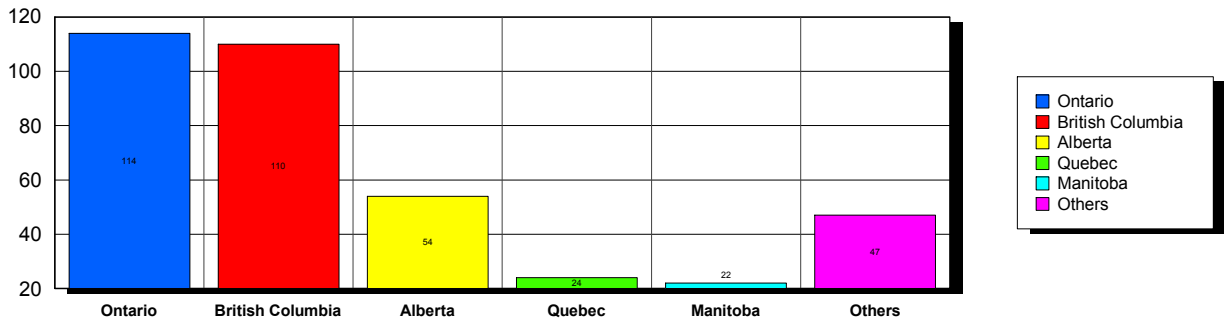
USA

Top 5 States per Country

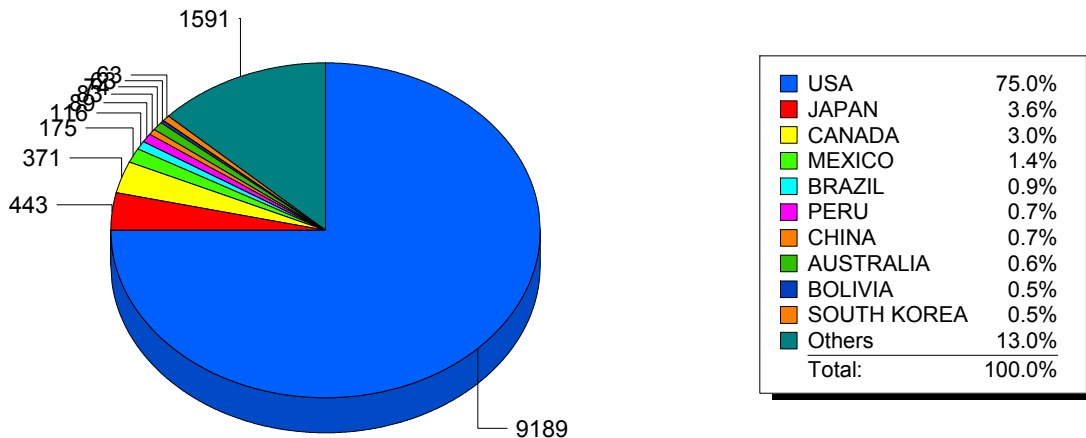


CANADA

Top 5 States per Country



Top 10 Countries



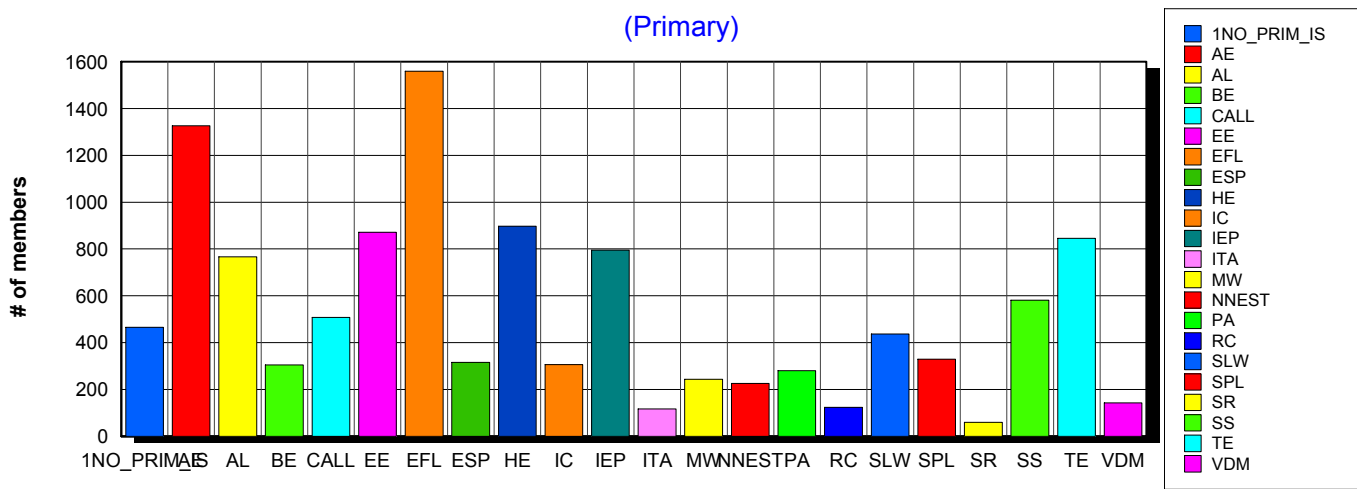
Basic statistics on Primary vs. other memberships in interest sections. For members paid through 2/28/2011 or later.

			<i>Primary versus other</i>		
No Primary Interest Section	1.1%	472	465	7	
Adult Education	7.2%	3,044	1,327	1,717	
Applied Linguistics	6.2%	2,594	767	1,827	
Bilingual Education	3.9%	1,645	304	1,341	
Computer-Assisted Language Learning	5.3%	2,230	508	1,722	
Elementary Education	4.6%	1,928	872	1,056	
English as a Foreign Language	8.3%	3,474	1,560	1,914	
English for Specific Purposes	4.5%	1,891	316	1,575	
Higher Education	6.0%	2,546	897	1,649	
Intercultural Communication	4.7%	1,984	306	1,678	
Intensive English Programs	5.6%	2,374	795	1,579	
International Teaching Assistants	2.6%	1,074	117	957	
Materials Writers	3.5%	1,483	243	1,240	
Nonnative English Speakers in TESOL	3.2%	1,360	226	1,134	
Program Administration	3.4%	1,414	280	1,134	
Refugee Concerns	2.4%	1,004	123	881	
Second Language Writing	5.8%	2,425	437	1,988	
Speech, Pronunciation, and Listening	5.2%	2,202	329	1,873	
Social Responsibility	2.1%	873	60	813	
Secondary Schools	3.8%	1,594	581	1,013	
Teacher Education	7.0%	2,948	845	2,103	
Video & Digital Media	3.6%	1,536	142	1,394	
<i>11,528 distinct members</i>		Total # of IS memberships	42,095	11,500	30,595

The total count is the number of IS memberships total and may either be LESS or MORE than the actual number of individual members of TESOL. Due to open access to Interest Sections, these numbers may fluctuate considerably each month. For instance, one member may have selected four interest sections, while some members may belong to none.

Interest Sections

(Primary)

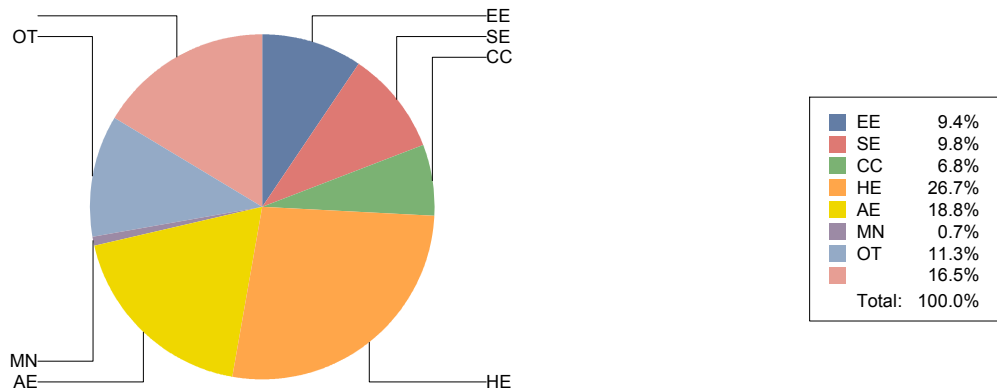


Basic Statistics on Area of Work (Members paid through >= 2/28/2011)

Elementary Education	EE	1,142	9.4%
Secondary Education	SE	1,198	9.8%
Community/2yr College	CC	824	6.8%
Postsecondary Education	HE	3,262	26.7%
Adult Education	AE	2,293	18.8%
Mainstream	MN	91	0.7%
Other	OT	1,374	11.3%
		2,011	16.5%
		12,195	

Only members who selected an area of work are included on this report. Other members may not have responded to this question and are excluded from the count.

Areas of Work



(Blanks indicate no response)

Statistics on Areas of Interest (Members paid through >= 2/28/2011)

<u>CODE</u>	<u>DESCRIPTION</u>	<u>TOTAL*</u>	<u>% of TOTAL*</u>
EFL	English as a foreign language	3,069	5%
CURRICULUM	Materials development/Curriculum	2,854	4%
SLA	Second language acquisition	2,825	4%
TE	Teacher education	2,764	4%
AL	Applied linguistics	2,599	4%
IC	Multiculturalism/intercultural communications	2,564	4%
AE	Adult education	2,552	4%
WRITING	Writing/composition	2,511	4%
CALL	Technology in education	2,420	4%
CONTENT	Content-based instruction	2,290	3%
HE	Higher education	2,217	3%
PROFDEV	Professional development	2,159	3%
IEP	Intensive English programs	2,157	3%
READING	Reading/literacy	2,124	3%
SP	Speaking/pronunciation	2,018	3%
GRAMMAR	Grammar	1,918	3%
ASSESS	Assessment/testing	1,909	3%
ESP	English for specific purposes	1,766	3%
RS	Research	1,554	2%
BE	Bilingual education	1,536	2%
DISTANCE	Distance learning/Online Education	1,319	2%
VOCAB	Vocabulary/Lexicon	1,307	2%
PA	Program administration	1,259	2%
EE	Elementary/primary education	1,253	2%
SOCIAL	Social/global/political concerns	1,108	2%
SS	Secondary education	1,101	2%
WORKPLACE	Workplace English instruction/Business English	1,093	2%
ISKILL	Integrated Skills	1,072	2%
LISTEN	Listening	1,060	2%
VI	Video and digital media	1,022	2%
COMMCOLL	Community college/technical ed	883	1%
RC	Refugee concerns	798	1%
LIT	Literature	790	1%
STANDARDS	Standards	743	1%
LINGUISTICS	Theoretical Linguistics	710	1%
ITA	International teaching assistants	692	1%
FAMILY	Community/family outreach	673	1%
EMPLOYMENT	Employment issues/Certification	564	1%
LDSN	Learning Disorders/Special Needs	548	1%
PUBLICPOLICY	Public policy	494	1%
MAINSTREAMING	Mainstreaming	459	1%
NNES	NNES/NES issues	455	1%
ARTS	Arts/Media/Science/Math/Social Science	373	1%
ACCRED	Accreditation	369	1%
STYLISTICS	Stylistics	146	0%

Sorted in order of prevalence.

** Note: Members are encouraged to choose multiple areas of interest and some members do not choose any areas of interest. The total number of distinct members (8,909) represented in this report is less than the total number of active members as indicated elsewhere in this report.*

Areas of interest are separate from official TESOL interest sections. Areas of interest represent distinct areas in which a member may be interested, rather than official entities in which a member is involved.

Areas of interest which have a very low count may be recent additions to the AOI list, or may reflect overall trends in membership.

Statistics on Areas of Expertise (Members paid through >= 2/28/2011)

<u>CODE</u>	<u>DESCRIPTION</u>	<u>TOTAL*</u>	<u>% of TOTAL*</u>
EFL	English as a foreign language	1,933	7%
AE	Adult education	1,584	6%
CURRICULUM	Materials development/Curriculum	1,398	5%
WRITING	Writing/composition	1,316	5%
AL	Applied linguistics	1,248	4%
IEP	Intensive English programs	1,184	4%
TE	Teacher education	1,174	4%
SLA	Second language acquisition	1,171	4%
HE	Higher education	1,104	4%
CONTENT	Content-based instruction	1,020	4%
GRAMMAR	Grammar	992	4%
IC	Multiculturalism/intercultural communications	897	3%
EE	Elementary/primary education	853	3%
READING	Reading/literacy	805	3%
ESP	English for specific purposes	797	3%
CALL	Technology in education	796	3%
SP	Speaking/pronunciation	764	3%
PROFDEV	Professional development	748	3%
ASSESS	Assessment/testing	707	3%
PA	Program administration	636	2%
SS	Secondary education	575	2%
BE	Bilingual education	573	2%
ISKILL	Integrated Skills	560	2%
COMMCOLL	Community college/technical ed	501	2%
DISTANCE	Distance learning/Online Education	462	2%
WORKPLACE	Workplace English instruction/Business English	454	2%
RS	Research	426	2%
LISTEN	Listening	401	1%
LIT	Literature	356	1%
VOCAB	Vocabulary/Lexicon	354	1%
SOCIAL	Social/global/political concerns	276	1%
VI	Video and digital media	227	1%
ITA	International teaching assistants	207	1%
FAMILY	Community/family outreach	197	1%
ARTS	Arts/Media/Science/Math/Social Science	193	1%
NNES	NNES/NES issues	186	1%
ACCRED	Accreditation	178	1%
STANDARDS	Standards	177	1%
MAINSTREAMING	Mainstreaming	153	1%
LINGUISTICS	Theoretical Linguistics	150	1%
RC	Refugee concerns	146	1%
LDSN	Learning Disorders/Special Needs	136	0%
EMPLOYMENT	Employment issues/Certification	121	0%
PUBLICPOLICY	Public policy	92	0%
STYLISTICS	Stylistics	26	0%

Sorted in order of prevalence.

** Note: Members are encouraged to choose multiple areas of expertise and some members do not choose any areas of expertise. The total number of distinct members (6,931) represented in this report is less than the total number of active members as indicated elsewhere in this report.*

Areas of Expertise are separate from official TESOL interest sections or Areas of Interest. Areas of expertise represent distinct areas in which a member may be experienced in, rather than official entities in which a member is involved.

Areas of interest which have a very low count may be recent additions to the AOI list, or may reflect overall trends in membership.