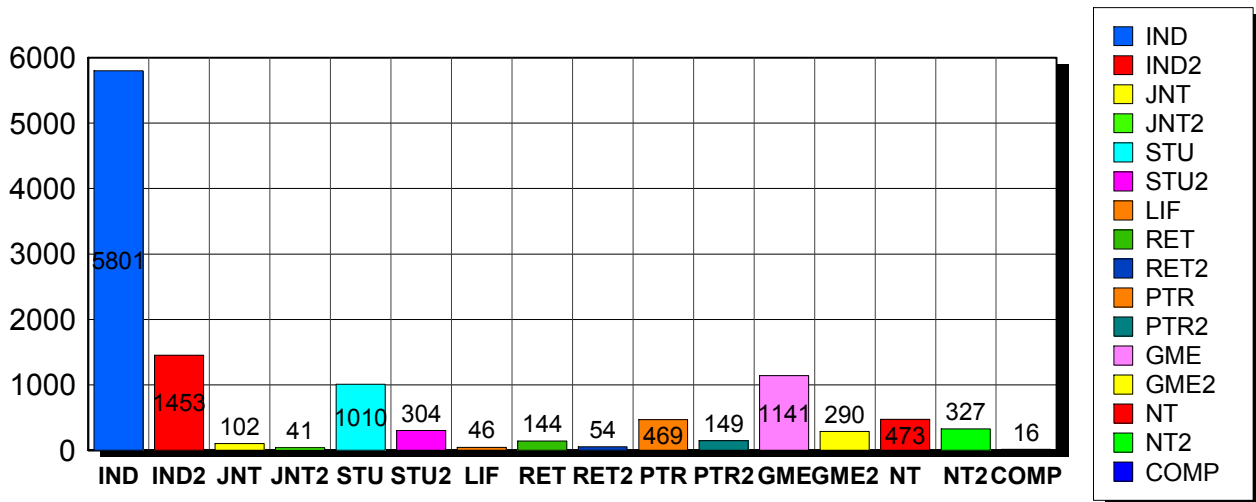


5/12/2011

### Membership Statistics: Grand totals for basic membership, by member type

		<u># Memberships</u>	<u># Members</u>
IND	BASIC	5,801	5,801
IND2	BASIC	1,453	1,453
JNT	BASIC	102	204
JNT2	BASIC	41	82
STU	BASIC	1,010	1,010
STU2	BASIC	304	304
LIF	BASIC	46	46
RET	BASIC	144	144
RET2	BASIC	54	54
PTR	BASIC	469	469
PTR2	BASIC	149	149
GME	BASIC	1,141	1,141
GME2	BASIC	290	290
NT	BASIC	473	473
NT2	BASIC	327	327
COMP	BASIC	16	16
<b>Grand Total:</b>		<b>11,820</b>	<b>11,963</b>

### Member Types



Note: in all general statistic reports, joint household memberships are treated as "one" member EXCEPT in the second column of this report, where joints are counted as two people, providing the most accurate count of the number of TESOL members.

This report is based on members paid through 4/30/2011 or later.

Country/State/Province	Total	
<b>AFGHANISTAN</b>	<b>4</b>	<b>0.0%</b>
<b>ALBANIA</b>	<b>8</b>	<b>0.1%</b>
<b>ALGERIA</b>	<b>5</b>	<b>0.0%</b>
<b>AMERICAN SAMOA</b>	<b>1</b>	<b>0.0%</b>
<b>ANGOLA</b>	<b>2</b>	<b>0.0%</b>
<b>ARGENTINA</b>	<b>34</b>	<b>0.3%</b>
<b>ARMENIA</b>	<b>4</b>	<b>0.0%</b>
<b>AUSTRALIA</b>	<b>70</b>	<b>0.6%</b>
<b>AUSTRIA</b>	<b>4</b>	<b>0.0%</b>
<b>AZERBAIJAN</b>	<b>3</b>	<b>0.0%</b>
<b>BAHRAIN</b>	<b>5</b>	<b>0.0%</b>
<b>BANGLADESH</b>	<b>24</b>	<b>0.2%</b>
<b>BELARUS</b>	<b>2</b>	<b>0.0%</b>
<b>BELGIUM</b>	<b>2</b>	<b>0.0%</b>
<b>BENIN</b>	<b>2</b>	<b>0.0%</b>
<b>BOLIVIA</b>	<b>13</b>	<b>0.1%</b>
<b>BOSNIA AND HERZEGOVINA</b>	<b>1</b>	<b>0.0%</b>
<b>BOTSWANA</b>	<b>2</b>	<b>0.0%</b>
<b>BRAZIL</b>	<b>104</b>	<b>0.9%</b>
<b>BRUNEI DARUSSALAM</b>	<b>1</b>	<b>0.0%</b>
<b>BULGARIA</b>	<b>1</b>	<b>0.0%</b>
<b>BURKINA FASO</b>	<b>3</b>	<b>0.0%</b>
<b>CAMBODIA</b>	<b>5</b>	<b>0.0%</b>
<b>CAMEROON</b>	<b>12</b>	<b>0.1%</b>
<b>Canada</b>	<b>1</b>	<b>0.0%</b>
<b>CANADA</b>		
<i>CANADA</i>	<i>1</i>	
<i>CANADA</i>	<i>Alberta</i>	<i>53</i>
<i>CANADA</i>	<i>British Columbia</i>	<i>106</i>
<i>CANADA</i>	<i>Manitoba</i>	<i>19</i>
<i>CANADA</i>	<i>New Brunswick</i>	<i>23</i>
<i>CANADA</i>	<i>Newfoundland</i>	<i>3</i>
<i>CANADA</i>	<i>Nova Scotia</i>	<i>8</i>
<i>CANADA</i>	<i>Ontario</i>	<i>110</i>
<i>CANADA</i>	<i>Quebec</i>	<i>24</i>
<i>CANADA</i>	<i>Saskatchewan</i>	<i>11</i>
<i>CANADA</i>	<i>Yukon Territory</i>	<i>1</i>
<b>CANADA</b>	<b>359</b>	<b>3.0%</b>
<b>CAYMAN ISLANDS</b>	<b>1</b>	<b>0.0%</b>
<b>CENTRAL AFRICAN REPUBLIC</b>	<b>1</b>	<b>0.0%</b>
<b>CHILE</b>	<b>27</b>	<b>0.2%</b>
<b>CHINA</b>	<b>84</b>	<b>0.7%</b>
<b>COLOMBIA</b>	<b>39</b>	<b>0.3%</b>
<b>COSTA RICA</b>	<b>18</b>	<b>0.2%</b>
<b>COTE D'IVOIRE</b>	<b>1</b>	<b>0.0%</b>
<b>CROATIA</b>	<b>5</b>	<b>0.0%</b>
<b>CYPRUS</b>	<b>3</b>	<b>0.0%</b>
<b>CZECH REPUBLIC</b>	<b>6</b>	<b>0.1%</b>
<b>DENMARK</b>	<b>1</b>	<b>0.0%</b>
<b>DOMINICAN REPUBLIC</b>	<b>12</b>	<b>0.1%</b>
<b>ECUADOR</b>	<b>28</b>	<b>0.2%</b>
<b>EGYPT</b>	<b>26</b>	<b>0.2%</b>
<b>EL SALVADOR</b>	<b>6</b>	<b>0.1%</b>
<b>ESTONIA</b>	<b>1</b>	<b>0.0%</b>
<b>ETHIOPIA</b>	<b>2</b>	<b>0.0%</b>
<b>FINLAND</b>	<b>7</b>	<b>0.1%</b>
<b>FRANCE</b>	<b>10</b>	<b>0.1%</b>

GEORGIA	5	0.0%
GERMANY	23	0.2%
GHANA	1	0.0%
GREECE	11	0.1%
GUAM	3	0.0%
GUATEMALA	17	0.1%
HAITI	17	0.1%
HONDURAS	5	0.0%
HONG KONG	13	0.1%
HONG KONG SAR CHINA	24	0.2%
HUNGARY	2	0.0%
INDIA	21	0.2%
INDONESIA	36	0.3%
IRAN	26	0.2%
IRAN, ISLAMIC REPUBLIC OF	2	0.0%
IRAQ	50	0.4%
IRELAND	2	0.0%
ISRAEL	17	0.1%
ITALY	20	0.2%
JAMAICA	1	0.0%
JAPAN	443	3.7%
JORDAN	3	0.0%
KAZAKHSTAN	12	0.1%
KENYA	1	0.0%
KOREA, REPUBLIC OF	38	0.3%
KOSOVO (UNMIK)	2	0.0%
KUWAIT	20	0.2%
KYRGYZSTAN	3	0.0%
LAOS	10	0.1%
LATVIA	1	0.0%
LEBANON	8	0.1%
LIBYA	5	0.0%
LITHUANIA	3	0.0%
MACAO	5	0.0%
MACEDONIA	2	0.0%
MADAGASCAR	8	0.1%
MALAYSIA	19	0.2%
MALDIVES	2	0.0%
MARSHALL ISLANDS	4	0.0%
MARTINIQUE	1	0.0%
MAURITIUS	1	0.0%
MEXICO	167	1.4%
MICRONESIA, FED STATES OF	1	0.0%
MOLDOVA, REPUBLIC OF	1	0.0%
MONGOLIA	17	0.1%
MOROCCO	22	0.2%
MOZAMBIOUE	1	0.0%
NAMIBIA	1	0.0%
NEPAL	4	0.0%
NETHERLANDS	7	0.1%
NEW ZEALAND	13	0.1%
NICARAGUA	3	0.0%
NIGER	1	0.0%
NIGERIA	1	0.0%
NORWAY	4	0.0%
OMAN	7	0.1%
PAKISTAN	4	0.0%
PALAU	5	0.0%
PALESTINIAN TERRITORY	2	0.0%
PANAMA	40	0.3%
PARAGUAY	2	0.0%

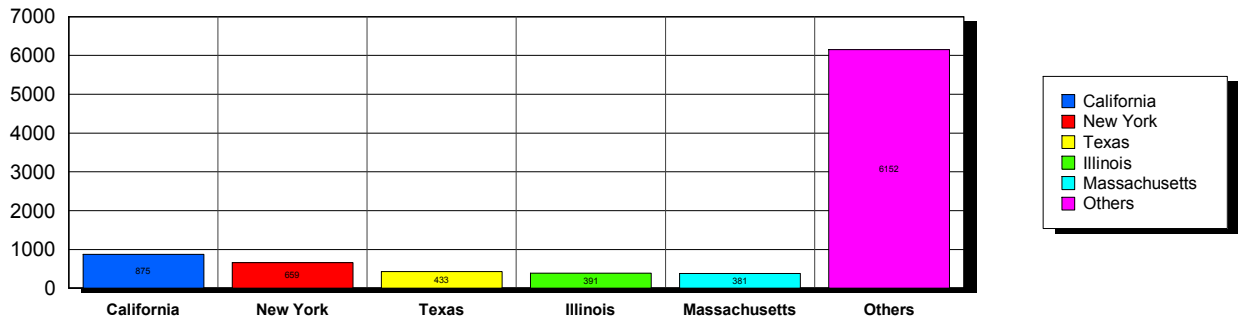
<b>PEOPLES REP OF CHINA</b>	<b>50</b>	<b>0.4%</b>
<b>PERU</b>	<b>86</b>	<b>0.7%</b>
<b>PHILIPPINES</b>	<b>35</b>	<b>0.3%</b>
<b>POLAND</b>	<b>10</b>	<b>0.1%</b>
<b>PORTUGAL</b>	<b>1</b>	<b>0.0%</b>
<b>OATAR</b>	<b>31</b>	<b>0.3%</b>
<b>ROMANIA</b>	<b>2</b>	<b>0.0%</b>
<b>RUSSIA</b>	<b>39</b>	<b>0.3%</b>
<b>RUSSIAN FEDERATION</b>	<b>8</b>	<b>0.1%</b>
<b>RWANDA</b>	<b>2</b>	<b>0.0%</b>
<b>SAO TOME AND PRINCIPE</b>	<b>1</b>	<b>0.0%</b>
<b>SAUDI ARABIA</b>	<b>53</b>	<b>0.4%</b>
<b>SENEGAL</b>	<b>10</b>	<b>0.1%</b>
<b>SERBIA</b>	<b>5</b>	<b>0.0%</b>
<b>SIERRA LEONE</b>	<b>1</b>	<b>0.0%</b>
<b>SINGAPORE</b>	<b>16</b>	<b>0.1%</b>
<b>SLOVAKIA</b>	<b>1</b>	<b>0.0%</b>
<b>SOUTH AFRICA</b>	<b>7</b>	<b>0.1%</b>
<b>SOUTH KOREA</b>	<b>58</b>	<b>0.5%</b>
<b>SPAIN</b>	<b>20</b>	<b>0.2%</b>
<b>SRI LANKA</b>	<b>1</b>	<b>0.0%</b>
<b>SUDAN</b>	<b>4</b>	<b>0.0%</b>
<b>SWAZILAND</b>	<b>1</b>	<b>0.0%</b>
<b>SWEDEN</b>	<b>7</b>	<b>0.1%</b>
<b>SWITZERLAND</b>	<b>7</b>	<b>0.1%</b>
<b>SYRIAN ARAB REPUBLIC</b>	<b>1</b>	<b>0.0%</b>
<b>TAIWAN</b>	<b>24</b>	<b>0.2%</b>
<b>TAIWAN ROC</b>	<b>43</b>	<b>0.4%</b>
<b>TAIWAN, PROVINCE OF CHINA</b>	<b>1</b>	<b>0.0%</b>
<b>TAJKISTAN</b>	<b>1</b>	<b>0.0%</b>
<b>THAILAND</b>	<b>40</b>	<b>0.3%</b>
<b>TRINIDAD AND TOBAGO</b>	<b>3</b>	<b>0.0%</b>
<b>TUNISIA</b>	<b>5</b>	<b>0.0%</b>
<b>TURKEY</b>	<b>40</b>	<b>0.3%</b>
<b>TURKMENISTAN</b>	<b>2</b>	<b>0.0%</b>
<b>UKRAINE</b>	<b>9</b>	<b>0.1%</b>
<b>UNITED ARAB EMIRATES</b>	<b>59</b>	<b>0.5%</b>
<b>UNITED KINGDOM</b>	<b>54</b>	<b>0.5%</b>
<b>URUGUAY</b>	<b>15</b>	<b>0.1%</b>
<b>US MINOR OUTLYING ISLANDS</b>	<b>3</b>	<b>0.0%</b>
<b>USA</b>		
<i>USA</i>	<i>67</i>	
<i>USA</i>	<i>Alabama</i>	<i>97</i>
<i>USA</i>	<i>Alaska</i>	<i>27</i>
<i>USA</i>	<i>American Embassy</i>	<i>22</i>
<i>USA</i>	<i>Arizona</i>	<i>195</i>
<i>USA</i>	<i>Arkansas</i>	<i>98</i>
<i>USA</i>	<i>Armed Forces</i>	<i>10</i>
<i>USA</i>	<i>Armed Frces Americas</i>	<i>2</i>
<i>USA</i>	<i>British Columbia</i>	<i>1</i>
<i>USA</i>	<i>California</i>	<i>876</i>
<i>USA</i>	<i>Colorado</i>	<i>173</i>
<i>USA</i>	<i>Connecticut</i>	<i>156</i>
<i>USA</i>	<i>Delaware</i>	<i>32</i>
<i>USA</i>	<i>District of Columbia</i>	<i>188</i>
<i>USA</i>	<i>Florida</i>	<i>374</i>
<i>USA</i>	<i>Georgia</i>	<i>242</i>
<i>USA</i>	<i>Guam</i>	<i>6</i>
<i>USA</i>	<i>Hawaii</i>	<i>74</i>
<i>USA</i>	<i>Idaho</i>	<i>30</i>
<i>USA</i>	<i>Illinois</i>	<i>391</i>

USA	Indiana	166	
USA	Iowa	102	
USA	Kansas	95	
USA	Kentucky	70	
USA	Louisiana	100	
USA	Maine	36	
USA	Marshall Islands	1	
USA	Maryland	299	
USA	Massachusetts	375	
USA	Michigan	207	
USA	Minnesota	169	
USA	Mississippi	63	
USA	Missouri	160	
USA	Montana	16	
USA	Nebraska	37	
USA	Nevada	67	
USA	New Hampshire	72	
USA	New Jersey	260	
USA	New Mexico	58	
USA	New York	660	
USA	North Carolina	159	
USA	North Dakota	24	
USA	Ohio	205	
USA	Oklahoma	53	
USA	Ontario	1	
USA	Oregon	194	
USA	Palau	1	
USA	Pennsylvania	345	
USA	Puerto Rico	84	
USA	Rhode Island	57	
USA	South Carolina	57	
USA	South Dakota	17	
USA	Tennessee	111	
USA	Texas	433	
USA	Utah	114	
USA	Vermont	65	
USA	Virginia	370	
USA	Washington	271	
USA	West Virginia	28	
USA	Wisconsin	186	
USA	Wyoming	22	
<b>USA</b>		<b>8,871</b>	<b>75.0%</b>
<b>UZBEKISTAN</b>		<b>5</b>	<b>0.0%</b>
<b>VENEZUELA</b>		<b>19</b>	<b>0.2%</b>
<b>VIET NAM</b>		<b>2</b>	<b>0.0%</b>
<b>VIETNAM</b>		<b>16</b>	<b>0.1%</b>
<b>VIRGIN ISLANDS, U.S.</b>		<b>8</b>	<b>0.1%</b>
<b>YEMEN</b>		<b>4</b>	<b>0.0%</b>
<b>Grand Total:</b>		<b>11,821</b>	

153 distinct countries represented.

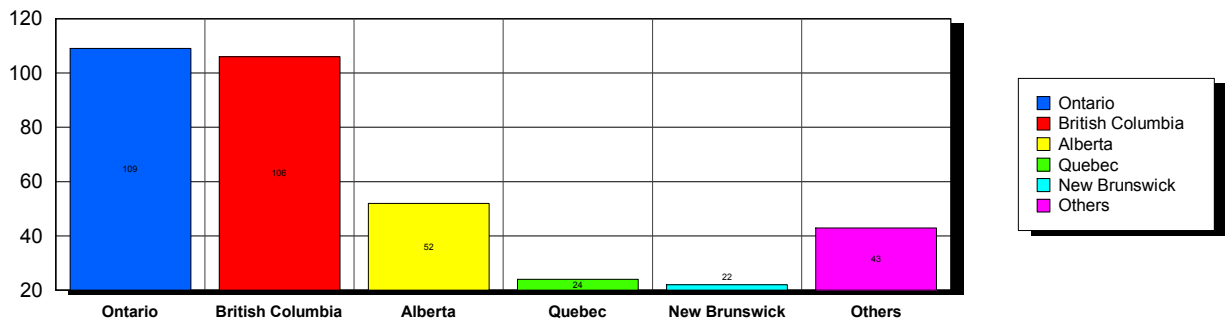
USA

**Top 5 States per Country**

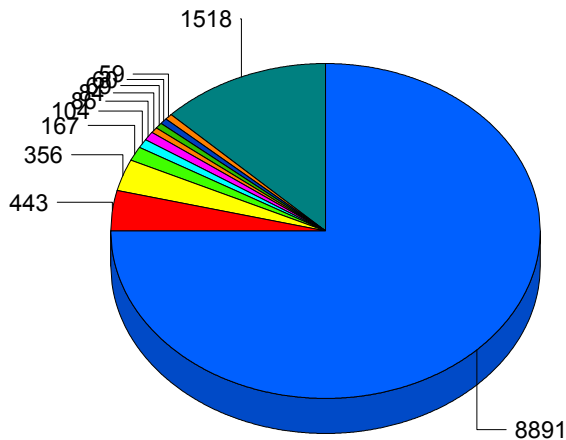


CANADA

**Top 5 States per Country**



**Top 10 Countries**



USA	75.1%
JAPAN	3.7%
CANADA	3.0%
MEXICO	1.4%
BRAZIL	0.9%
PERU	0.7%
CHINA	0.7%
AUSTRALIA	0.6%
UNITED ARAB EMIRATES	0.5%
SOUTH KOREA	0.5%
Others	12.8%
<b>Total:</b>	<b>100.0%</b>

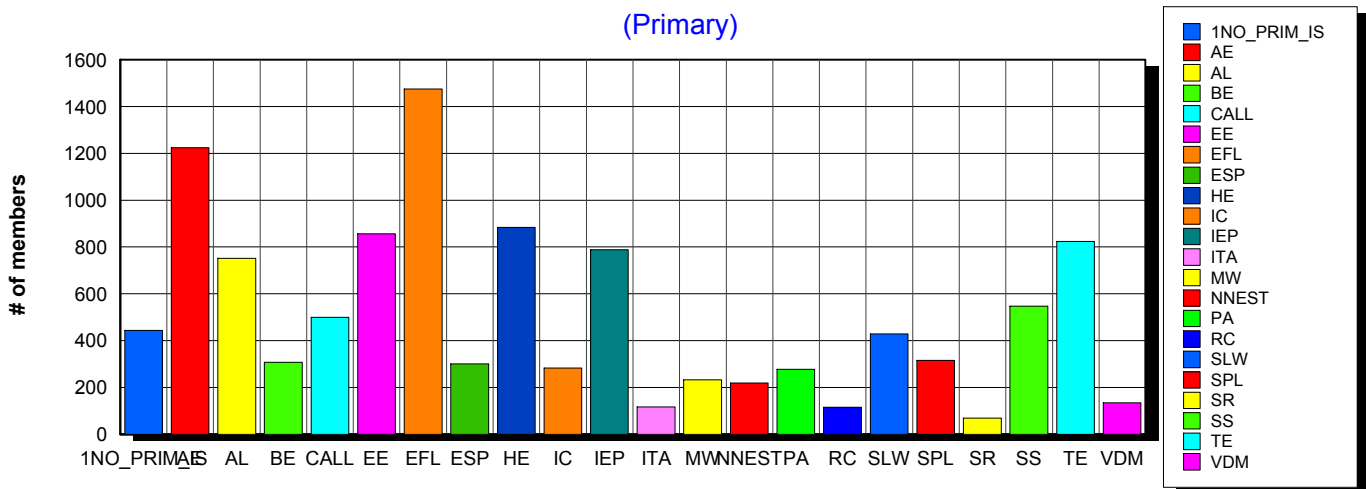
5/12/2011 **Basic statistics on Primary vs. other memberships in interest sections. For members paid through 4/30/2011 or later.**

			<i>Primary versus other</i>	
No Primary Interest Section	1.1%	<b>453</b>	444	9
Adult Education	7.1%	<b>2,896</b>	1,224	1,672
Applied Linguistics	6.2%	<b>2,515</b>	751	1,764
Bilingual Education	3.9%	<b>1,583</b>	308	1,275
Computer-Assisted Language Learning	5.4%	<b>2,187</b>	500	1,687
Elementary Education	4.6%	<b>1,882</b>	856	1,026
English as a Foreign Language	8.2%	<b>3,338</b>	1,475	1,863
English for Specific Purposes	4.4%	<b>1,809</b>	300	1,509
Higher Education	6.1%	<b>2,500</b>	884	1,616
Intercultural Communication	4.7%	<b>1,920</b>	283	1,637
Intensive English Programs	5.7%	<b>2,311</b>	789	1,522
International Teaching Assistants	2.5%	<b>1,019</b>	116	903
Materials Writers	3.5%	<b>1,440</b>	233	1,207
Nonnative English Speakers in TESOL	3.2%	<b>1,314</b>	219	1,095
Program Administration	3.4%	<b>1,371</b>	277	1,094
Refugee Concerns	2.4%	<b>959</b>	115	844
Second Language Writing	5.8%	<b>2,375</b>	429	1,946
Speech, Pronunciation, and Listening	5.3%	<b>2,144</b>	315	1,829
Social Responsibility	2.1%	<b>859</b>	69	790
Secondary Schools	3.7%	<b>1,523</b>	547	976
Teacher Education	7.0%	<b>2,866</b>	824	2,042
Video & Digital Media	3.7%	<b>1,505</b>	134	1,371
<i>11,117 distinct members</i>		<b>Total # of IS memberships</b>	<b>40,769</b>	<i>11,092</i> <i>29,677</i>

The total count is the number of IS memberships total and may either be LESS or MORE than the actual number of individual members of TESOL. Due to open access to Interest Sections, these numbers may fluctuate considerably each month. For instance, one member may have selected four interest sections, while some members may belong to none.

### Interest Sections

(Primary)

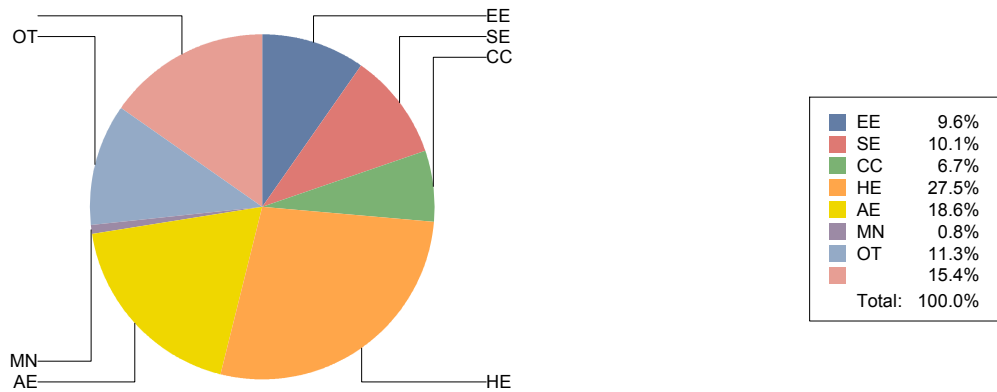


## Basic Statistics on Area of Work (Members paid through >= 4/30/2011)

Elementary Education	EE	1,133	9.6%
Secondary Education	SE	1,187	10.1%
Community/2yr College	CC	794	6.7%
Postsecondary Education	HE	3,234	27.5%
Adult Education	AE	2,186	18.6%
Mainstream	MN	91	0.8%
Other	OT	1,333	11.3%
		<b>1,810</b>	<b>15.4%</b>
		<b>11,768</b>	

Only members who selected an area of work are included on this report. Other members may not have responded to this question and are excluded from the count.

### Areas of Work



(Blanks indicate no response)



## Statistics on Areas of Interest (Members paid through >= 4/30/2011)

<u>CODE</u>	<u>DESCRIPTION</u>	<u>TOTAL*</u>	<u>% of TOTAL*</u>
EFL	English as a foreign language	3,039	5%
CURRICULUM	Materials development/Curriculum	2,822	4%
SLA	Second language acquisition	2,781	4%
TE	Teacher education	2,742	4%
AL	Applied linguistics	2,543	4%
IC	Multiculturalism/intercultural communications	2,527	4%
AE	Adult education	2,495	4%
WRITING	Writing/composition	2,487	4%
CALL	Technology in education	2,393	4%
CONTENT	Content-based instruction	2,256	3%
HE	Higher education	2,204	3%
PROFDEV	Professional development	2,157	3%
IEP	Intensive English programs	2,134	3%
READING	Reading/literacy	2,089	3%
SP	Speaking/pronunciation	2,017	3%
GRAMMAR	Grammar	1,914	3%
ASSESS	Assessment/testing	1,885	3%
ESP	English for specific purposes	1,735	3%
RS	Research	1,555	2%
BE	Bilingual education	1,492	2%
DISTANCE	Distance learning/Online Education	1,317	2%
VOCAB	Vocabulary/Lexicon	1,308	2%
EE	Elementary/primary education	1,244	2%
PA	Program administration	1,239	2%
SOCIAL	Social/global/political concerns	1,105	2%
SS	Secondary education	1,090	2%
ISKILL	Integrated Skills	1,085	2%
WORKPLACE	Workplace English instruction/Business English	1,066	2%
LISTEN	Listening	1,062	2%
VI	Video and digital media	1,011	2%
COMMCOLL	Community college/technical ed	860	1%
LIT	Literature	779	1%
RC	Refugee concerns	771	1%
STANDARDS	Standards	749	1%
ITA	International teaching assistants	689	1%
LINGUISTICS	Theoretical Linguistics	687	1%
FAMILY	Community/family outreach	646	1%
EMPLOYMENT	Employment issues/Certification	554	1%
LDSN	Learning Disorders/Special Needs	554	1%
PUBLICPOLICY	Public policy	479	1%
MAINSTREAMING	Mainstreaming	459	1%
NNES	NNES/NES issues	452	1%
ACCRED	Accreditation	374	1%
ARTS	Arts/Media/Science/Math/Social Science	355	1%
STYLISTICS	Stylistics	151	0%

Sorted in order of prevalence.

*\* Note: Members are encouraged to choose multiple areas of interest and some members do not choose any areas of interest. The total number of distinct members (8,719) represented in this report is less than the total number of active members as indicated elsewhere in this report.*

*Areas of interest are separate from official TESOL interest sections. Areas of interest represent distinct areas in which a member may be interested, rather than official entities in which a member is involved.*

*Areas of interest which have a very low count may be recent additions to the AOI list, or may reflect overall trends in membership.*

## Statistics on Areas of Expertise (Members paid through >= 4/30/2011)

<u>CODE</u>	<u>DESCRIPTION</u>	<u>TOTAL*</u>	<u>% of TOTAL*</u>
EFL	English as a foreign language	1,912	7%
AE	Adult education	1,530	5%
CURRICULUM	Materials development/Curriculum	1,390	5%
WRITING	Writing/composition	1,297	5%
AL	Applied linguistics	1,220	4%
IEP	Intensive English programs	1,168	4%
TE	Teacher education	1,167	4%
SLA	Second language acquisition	1,145	4%
HE	Higher education	1,093	4%
CONTENT	Content-based instruction	1,023	4%
GRAMMAR	Grammar	992	4%
IC	Multiculturalism/intercultural communications	876	3%
EE	Elementary/primary education	846	3%
CALL	Technology in education	796	3%
ESP	English for specific purposes	782	3%
READING	Reading/literacy	780	3%
SP	Speaking/pronunciation	767	3%
PROFDEV	Professional development	727	3%
ASSESS	Assessment/testing	710	3%
PA	Program administration	615	2%
BE	Bilingual education	569	2%
SS	Secondary education	569	2%
ISKILL	Integrated Skills	547	2%
COMMCOLL	Community college/technical ed	491	2%
DISTANCE	Distance learning/Online Education	473	2%
WORKPLACE	Workplace English instruction/Business English	437	2%
RS	Research	433	2%
LISTEN	Listening	395	1%
VOCAB	Vocabulary/Lexicon	363	1%
LIT	Literature	348	1%
SOCIAL	Social/global/political concerns	272	1%
VI	Video and digital media	231	1%
ITA	International teaching assistants	205	1%
FAMILY	Community/family outreach	194	1%
ARTS	Arts/Media/Science/Math/Social Science	185	1%
NNES	NNES/NES issues	183	1%
STANDARDS	Standards	179	1%
ACCRED	Accreditation	175	1%
MAINSTREAMING	Mainstreaming	153	1%
RC	Refugee concerns	150	1%
LINGUISTICS	Theoretical Linguistics	147	1%
LDSN	Learning Disorders/Special Needs	140	1%
EMPLOYMENT	Employment issues/Certification	119	0%
PUBLICPOLICY	Public policy	91	0%
STYLISTICS	Stylistics	30	0%

Sorted in order of prevalence.

*\* Note: Members are encouraged to choose multiple areas of expertise and some members do not choose any areas of expertise. The total number of distinct members (6,812) represented in this report is less than the total number of active members as indicated elsewhere in this report.*

*Areas of Expertise are separate from official TESOL interest sections or Areas of Interest. Areas of expertise represent distinct areas in which a member may be experienced in, rather than official entities in which a member is involved.*

*Areas of interest which have a very low count may be recent additions to the AOI list, or may reflect overall trends in membership.*