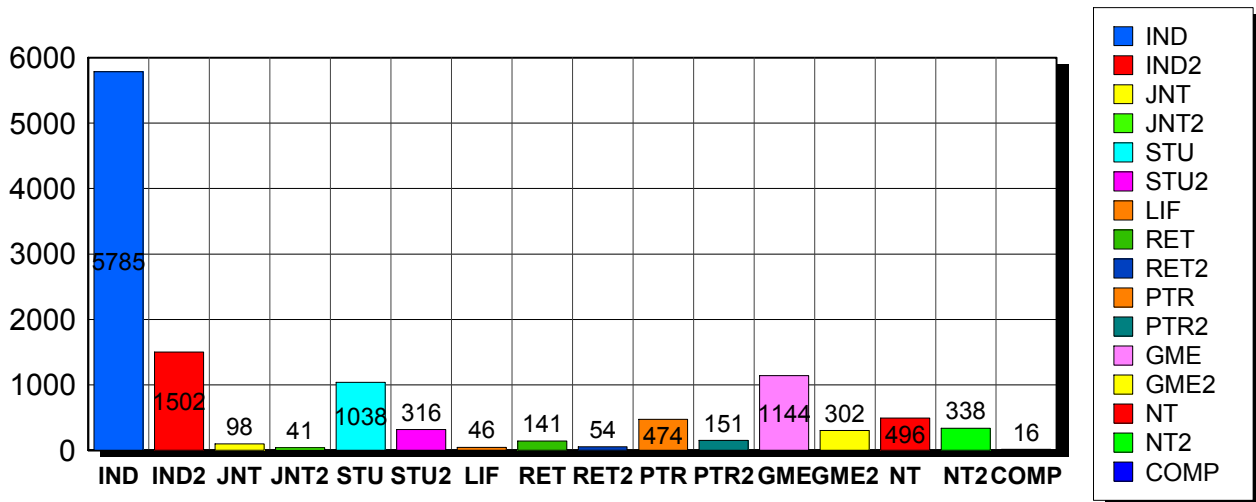


6/14/2011

Membership Statistics: Grand totals for basic membership, by member type

		<u># Memberships</u>	<u># Members</u>
IND	BASIC	5,785	5,785
IND2	BASIC	1,502	1,502
JNT	BASIC	98	196
JNT2	BASIC	41	82
STU	BASIC	1,038	1,038
STU2	BASIC	316	316
LIF	BASIC	46	46
RET	BASIC	141	141
RET2	BASIC	54	54
PTR	BASIC	474	474
PTR2	BASIC	151	151
GME	BASIC	1,144	1,144
GME2	BASIC	302	302
NT	BASIC	496	496
NT2	BASIC	338	338
COMP	BASIC	16	16
Grand Total:		11,942	12,081

Member Types



Note: in all general statistic reports, joint household memberships are treated as "one" member EXCEPT in the second column of this report, where joints are counted as two people, providing the most accurate count of the number of TESOL members.

This report is based on members paid through 5/31/2011 or later.

Country/State/Province	Total	
AFGHANISTAN	4	0.0%
ALAND ISLANDS	1	0.0%
ALBANIA	11	0.1%
ALGERIA	5	0.0%
AMERICAN SAMOA	1	0.0%
ANGOLA	2	0.0%
ARGENTINA	33	0.3%
ARMENIA	6	0.1%
AUSTRALIA	71	0.6%
AUSTRIA	3	0.0%
AZERBAIJAN	4	0.0%
BAHRAIN	5	0.0%
BANGLADESH	24	0.2%
BELARUS	2	0.0%
BELGIUM	2	0.0%
BENIN	2	0.0%
BOLIVIA	14	0.1%
BOSNIA AND HERZEGOVINA	1	0.0%
BOTSWANA	2	0.0%
BRAZIL	106	0.9%
BRUNEI DARUSSALAM	1	0.0%
BULGARIA	3	0.0%
BURKINA FASO	3	0.0%
CAMBODIA	7	0.1%
CAMEROON	12	0.1%
Canada	1	0.0%
CANADA		
<i>CANADA</i>	<i>1</i>	
<i>CANADA</i>	<i>Alberta</i>	<i>53</i>
<i>CANADA</i>	<i>British Columbia</i>	<i>108</i>
<i>CANADA</i>	<i>Manitoba</i>	<i>19</i>
<i>CANADA</i>	<i>New Brunswick</i>	<i>23</i>
<i>CANADA</i>	<i>Newfoundland</i>	<i>3</i>
<i>CANADA</i>	<i>Nova Scotia</i>	<i>7</i>
<i>CANADA</i>	<i>Ontario</i>	<i>107</i>
<i>CANADA</i>	<i>Quebec</i>	<i>25</i>
<i>CANADA</i>	<i>Saskatchewan</i>	<i>11</i>
<i>CANADA</i>	<i>Yukon Territory</i>	<i>1</i>
CANADA	358	3.0%
CAYMAN ISLANDS	1	0.0%
CENTRAL AFRICAN REPUBLIC	1	0.0%
CHILE	28	0.2%
CHINA	92	0.8%
COLOMBIA	39	0.3%
COSTA RICA	18	0.2%
COTE D'IVOIRE	1	0.0%
CROATIA	5	0.0%
CYPRUS	3	0.0%
CZECH REPUBLIC	6	0.1%
DENMARK	1	0.0%
DOMINICAN REPUBLIC	12	0.1%
ECUADOR	29	0.2%
EGYPT	27	0.2%
EL SALVADOR	5	0.0%
ESTONIA	1	0.0%
ETHIOPIA	2	0.0%
FINLAND	6	0.1%

FRANCE	10	0.1%
GEORGIA	5	0.0%
GERMANY	23	0.2%
GHANA	1	0.0%
GREECE	11	0.1%
GUAM	3	0.0%
GUATEMALA	17	0.1%
HAITI	18	0.2%
HONDURAS	5	0.0%
HONG KONG	12	0.1%
HONG KONG SAR CHINA	26	0.2%
HUNGARY	1	0.0%
INDIA	24	0.2%
INDONESIA	38	0.3%
IRAN	31	0.3%
IRAN, ISLAMIC REPUBLIC OF	2	0.0%
IRAQ	50	0.4%
IRELAND	2	0.0%
ISRAEL	17	0.1%
ITALY	18	0.2%
JAMAICA	1	0.0%
JAPAN	458	3.8%
JORDAN	5	0.0%
KAZAKHSTAN	13	0.1%
KENYA	1	0.0%
KOREA, REPUBLIC OF	38	0.3%
KOSOVO (UNMIK)	2	0.0%
KUWAIT	21	0.2%
KYRGYZSTAN	3	0.0%
LAOS	10	0.1%
LATVIA	1	0.0%
LEBANON	8	0.1%
LIBYA	5	0.0%
LITHUANIA	3	0.0%
MACAO	5	0.0%
MACEDONIA	3	0.0%
MADAGASCAR	8	0.1%
MALAYSIA	12	0.1%
MALDIVES	2	0.0%
MARSHALL ISLANDS	3	0.0%
MARTINIQUE	1	0.0%
MAURITIUS	1	0.0%
MEXICO	172	1.4%
MICRONESIA, FED STATES OF	1	0.0%
MOLDOVA, REPUBLIC OF	2	0.0%
MONGOLIA	19	0.2%
MOROCCO	22	0.2%
MOZAMBIOUE	1	0.0%
NAMIBIA	2	0.0%
NEPAL	4	0.0%
NETHERLANDS	6	0.1%
NEW ZEALAND	13	0.1%
NICARAGUA	3	0.0%
NIGER	1	0.0%
NIGERIA	1	0.0%
NORWAY	4	0.0%
OMAN	8	0.1%
PAKISTAN	9	0.1%
PALAU	5	0.0%
PALESTINIAN TERRITORY	2	0.0%
PANAMA	33	0.3%

PARAGUAY	2	0.0%
PEOPLES REP OF CHINA	49	0.4%
PERU	87	0.7%
PHILIPPINES	39	0.3%
POLAND	10	0.1%
PORTUGAL	1	0.0%
OATAR	31	0.3%
ROMANIA	3	0.0%
RUSSIA	37	0.3%
RUSSIAN FEDERATION	11	0.1%
RWANDA	4	0.0%
SAO TOME AND PRINCIPE	1	0.0%
SAUDI ARABIA	53	0.4%
SENEGAL	10	0.1%
SERBIA	5	0.0%
SIERRA LEONE	1	0.0%
SINGAPORE	17	0.1%
SLOVAKIA	1	0.0%
SOUTH AFRICA	7	0.1%
SOUTH KOREA	60	0.5%
SPAIN	20	0.2%
SRI LANKA	1	0.0%
SUDAN	5	0.0%
SWAZILAND	1	0.0%
SWEDEN	7	0.1%
SWITZERLAND	9	0.1%
SYRIAN ARAB REPUBLIC	1	0.0%
TAIWAN	26	0.2%
TAIWAN ROC	45	0.4%
TAIWAN, PROVINCE OF CHINA	1	0.0%
TAJKISTAN	1	0.0%
THAILAND	40	0.3%
TRINIDAD AND TOBAGO	4	0.0%
TUNISIA	5	0.0%
TURKEY	39	0.3%
TURKMENISTAN	2	0.0%
UGANDA	1	0.0%
UKRAINE	14	0.1%
UNITED ARAB EMIRATES	59	0.5%
UNITED KINGDOM	56	0.5%
URUGUAY	15	0.1%
US MINOR OUTLYING ISLANDS	4	0.0%

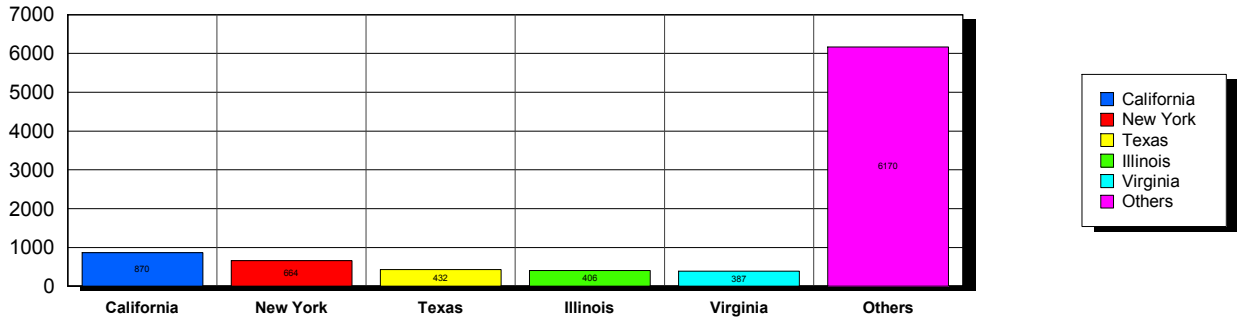
USA		
USA		32
USA	Alabama	99
USA	Alaska	27
USA	American Embassy	23
USA	Arizona	198
USA	Arkansas	100
USA	Armed Forces	10
USA	Armed Frcees Americas	2
USA	British Columbia	1
USA	California	871
USA	Colorado	170
USA	Connecticut	159
USA	Delaware	33
USA	District of Columbia	188
USA	Florida	377
USA	Georgia	246
USA	Guam	6
USA	Hawaii	74

USA	Idaho	33	
USA	Illinois	406	
USA	Indiana	171	
USA	Iowa	105	
USA	Kansas	96	
USA	Kentucky	69	
USA	Louisiana	98	
USA	Maine	35	
USA	Marshall Islands	1	
USA	Maryland	308	
USA	Massachusetts	370	
USA	Michigan	206	
USA	Minnesota	170	
USA	Mississippi	63	
USA	Missouri	156	
USA	Montana	16	
USA	Nebraska	37	
USA	Nevada	64	
USA	New Hampshire	73	
USA	New Jersey	261	
USA	New Mexico	58	
USA	New York	664	
USA	North Carolina	156	
USA	North Dakota	25	
USA	Ohio	210	
USA	Oklahoma	54	
USA	Ontario	1	
USA	Oregon	198	
USA	Palau	1	
USA	Pennsylvania	352	
USA	Puerto Rico	84	
USA	Rhode Island	55	
USA	South Carolina	60	
USA	South Dakota	17	
USA	Tennessee	116	
USA	Texas	432	
USA	Utah	115	
USA	Vermont	68	
USA	Virginia	386	
USA	Washington	272	
USA	West Virginia	30	
USA	Wisconsin	182	
USA	Wyoming	22	
USA		8,912	74.6%
UZBEKISTAN		5	0.0%
VENEZUELA		22	0.2%
VIET NAM		2	0.0%
VIETNAM		17	0.1%
VIRGIN ISLANDS, U.S.		9	0.1%
YEMEN		4	0.0%
Grand Total:		11,943	

155 distinct countries represented.

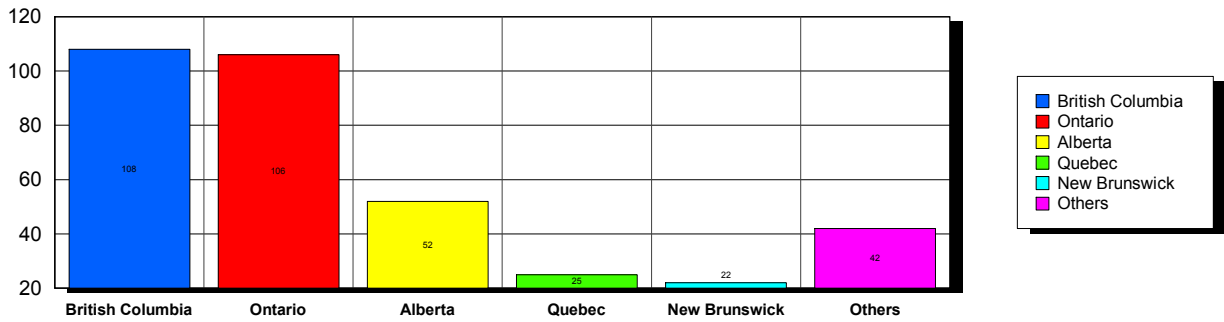
USA

Top 5 States per Country

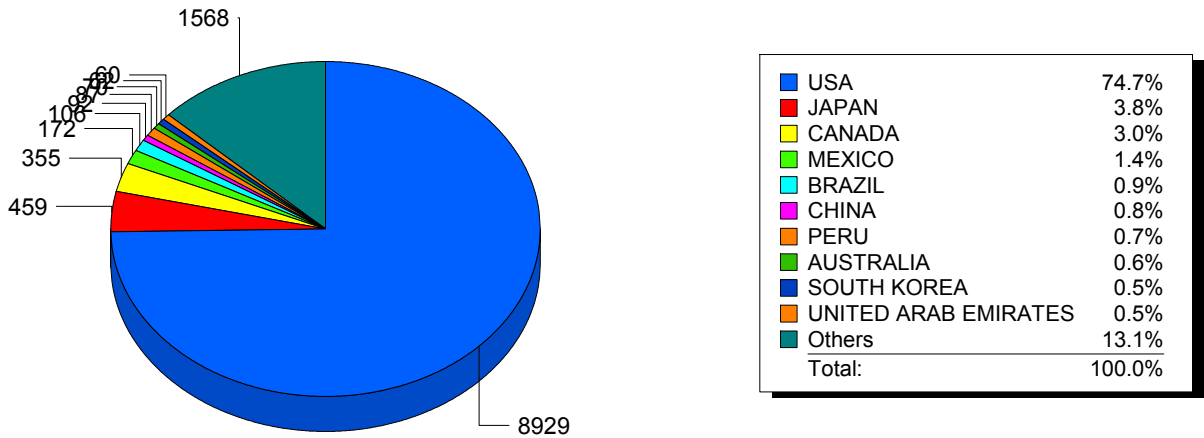


CANADA

Top 5 States per Country



Top 10 Countries



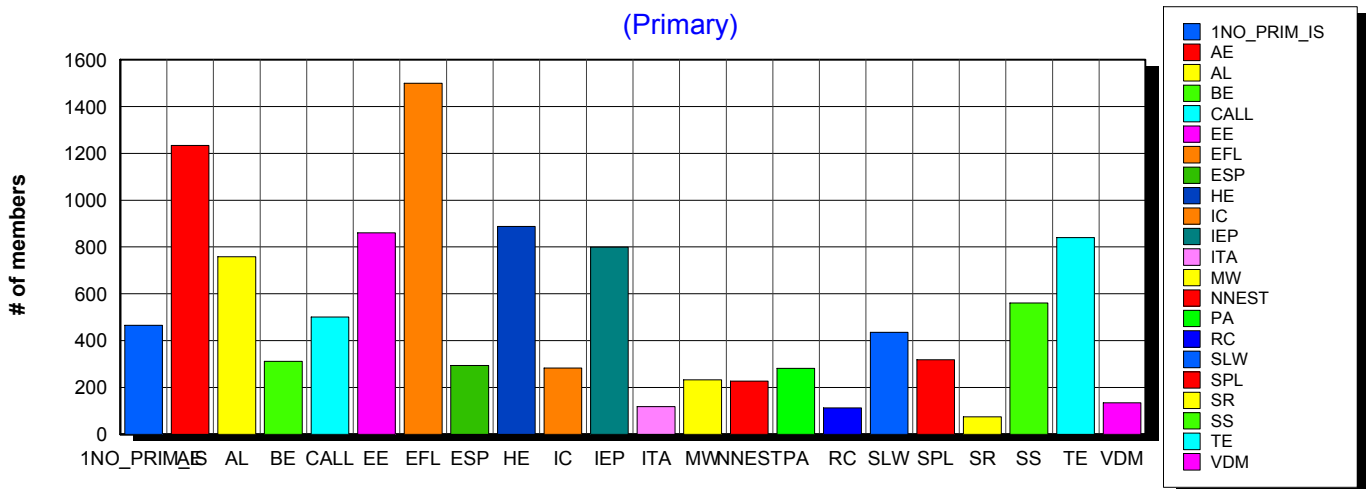
6/14/2011 **Basic statistics on Primary vs. other memberships in interest sections. For members paid through 5/31/2011 or later.**

			<i>Primary versus other</i>	
No Primary Interest Section	1.2%	474	465	9
Adult Education	7.1%	2,917	1,234	1,683
Applied Linguistics	6.2%	2,541	759	1,782
Bilingual Education	3.9%	1,590	312	1,278
Computer-Assisted Language Learning	5.4%	2,204	501	1,703
Elementary Education	4.6%	1,889	861	1,028
English as a Foreign Language	8.3%	3,391	1,500	1,891
English for Specific Purposes	4.4%	1,810	294	1,516
Higher Education	6.1%	2,495	888	1,607
Intercultural Communication	4.7%	1,937	283	1,654
Intensive English Programs	5.6%	2,314	799	1,515
International Teaching Assistants	2.5%	1,017	118	899
Materials Writers	3.5%	1,435	233	1,202
Nonnative English Speakers in TESOL	3.3%	1,336	227	1,109
Program Administration	3.3%	1,369	282	1,087
Refugee Concerns	2.3%	951	113	838
Second Language Writing	5.9%	2,403	436	1,967
Speech, Pronunciation, and Listening	5.2%	2,146	318	1,828
Social Responsibility	2.1%	861	74	787
Secondary Schools	3.7%	1,535	561	974
Teacher Education	7.1%	2,902	840	2,062
Video & Digital Media	3.7%	1,516	135	1,381
<i>11,259 distinct members</i>		Total # of IS memberships	41,033	11,233
			29,800	

The total count is the number of IS memberships total and may either be LESS or MORE than the actual number of individual members of TESOL. Due to open access to Interest Sections, these numbers may fluctuate considerably each month. For instance, one member may have selected four interest sections, while some members may belong to none.

Interest Sections

(Primary)

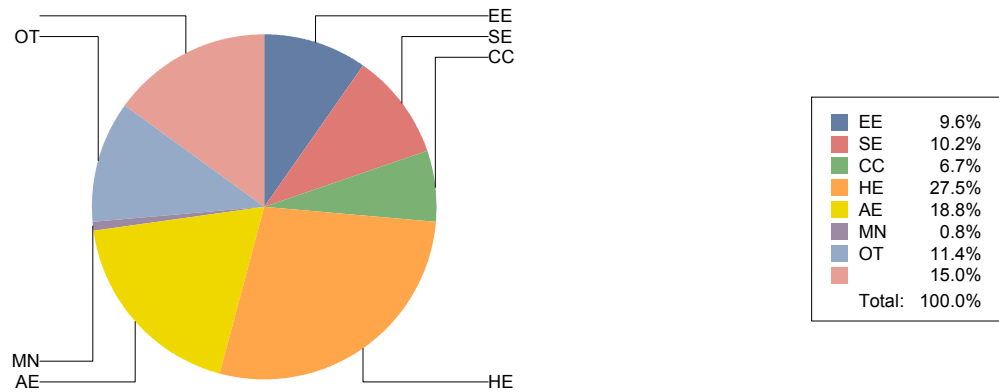


Basic Statistics on Area of Work (Members paid through >= 5/31/2011)

Elementary Education	EE	1,142	9.6%
Secondary Education	SE	1,211	10.2%
Community/2yr College	CC	794	6.7%
Postsecondary Education	HE	3,268	27.5%
Adult Education	AE	2,227	18.8%
Mainstream	MN	96	0.8%
Other	OT	1,348	11.4%
		1,779	15.0%
		11,865	

Only members who selected an area of work are included on this report. Other members may not have responded to this question and are excluded from the count.

Areas of Work



(Blanks indicate no response)

Statistics on Areas of Interest (Members paid through >= 5/31/2011)

<u>CODE</u>	<u>DESCRIPTION</u>	<u>TOTAL*</u>	<u>% of TOTAL*</u>
EFL	English as a foreign language	3,100	5%
CURRICULUM	Materials development/Curriculum	2,869	4%
SLA	Second language acquisition	2,836	4%
TE	Teacher education	2,795	4%
AL	Applied linguistics	2,581	4%
IC	Multiculturalism/intercultural communications	2,562	4%
AE	Adult education	2,514	4%
WRITING	Writing/composition	2,512	4%
CALL	Technology in education	2,428	4%
CONTENT	Content-based instruction	2,293	3%
HE	Higher education	2,253	3%
PROFDEV	Professional development	2,199	3%
IEP	Intensive English programs	2,161	3%
READING	Reading/literacy	2,122	3%
SP	Speaking/pronunciation	2,036	3%
GRAMMAR	Grammar	1,939	3%
ASSESS	Assessment/testing	1,913	3%
ESP	English for specific purposes	1,743	3%
RS	Research	1,593	2%
BE	Bilingual education	1,517	2%
DISTANCE	Distance learning/Online Education	1,351	2%
VOCAB	Vocabulary/Lexicon	1,334	2%
EE	Elementary/primary education	1,282	2%
PA	Program administration	1,259	2%
SOCIAL	Social/global/political concerns	1,120	2%
ISKILL	Integrated Skills	1,111	2%
SS	Secondary education	1,108	2%
WORKPLACE	Workplace English instruction/Business English	1,086	2%
LISTEN	Listening	1,080	2%
VI	Video and digital media	1,036	2%
COMMCOLL	Community college/technical ed	871	1%
LIT	Literature	813	1%
RC	Refugee concerns	784	1%
STANDARDS	Standards	747	1%
ITA	International teaching assistants	698	1%
LINGUISTICS	Theoretical Linguistics	694	1%
FAMILY	Community/family outreach	651	1%
EMPLOYMENT	Employment issues/Certification	569	1%
LDSN	Learning Disorders/Special Needs	565	1%
PUBLICPOLICY	Public policy	485	1%
NNES	NNES/NES issues	470	1%
MAINSTREAMING	Mainstreaming	466	1%
ACCRED	Accreditation	383	1%
ARTS	Arts/Media/Science/Math/Social Science	371	1%
STYLISTICS	Stylistics	154	0%

Sorted in order of prevalence.

** Note: Members are encouraged to choose multiple areas of interest and some members do not choose any areas of interest. The total number of distinct members (8,840) represented in this report is less than the total number of active members as indicated elsewhere in this report.*

Areas of interest are separate from official TESOL interest sections. Areas of interest represent distinct areas in which a member may be interested, rather than official entities in which a member is involved.

Areas of interest which have a very low count may be recent additions to the AOI list, or may reflect overall trends in membership.

Statistics on Areas of Expertise (Members paid through >= 5/31/2011)

<u>CODE</u>	<u>DESCRIPTION</u>	<u>TOTAL*</u>	<u>% of TOTAL*</u>
EFL	English as a foreign language	1,948	7%
AE	Adult education	1,555	5%
CURRICULUM	Materials development/Curriculum	1,409	5%
WRITING	Writing/composition	1,311	5%
AL	Applied linguistics	1,250	4%
TE	Teacher education	1,205	4%
IEP	Intensive English programs	1,185	4%
SLA	Second language acquisition	1,172	4%
HE	Higher education	1,106	4%
CONTENT	Content-based instruction	1,034	4%
GRAMMAR	Grammar	1,010	4%
IC	Multiculturalism/intercultural communications	899	3%
EE	Elementary/primary education	861	3%
CALL	Technology in education	812	3%
READING	Reading/literacy	798	3%
ESP	English for specific purposes	793	3%
SP	Speaking/pronunciation	775	3%
PROFDEV	Professional development	740	3%
ASSESS	Assessment/testing	709	2%
PA	Program administration	617	2%
SS	Secondary education	584	2%
BE	Bilingual education	575	2%
ISKILL	Integrated Skills	553	2%
COMMCOLL	Community college/technical ed	495	2%
DISTANCE	Distance learning/Online Education	480	2%
RS	Research	453	2%
WORKPLACE	Workplace English instruction/Business English	435	2%
LISTEN	Listening	399	1%
VOCAB	Vocabulary/Lexicon	369	1%
LIT	Literature	357	1%
SOCIAL	Social/global/political concerns	278	1%
VI	Video and digital media	241	1%
ITA	International teaching assistants	206	1%
FAMILY	Community/family outreach	194	1%
ARTS	Arts/Media/Science/Math/Social Science	189	1%
NNES	NNES/NES issues	188	1%
STANDARDS	Standards	180	1%
ACCRED	Accreditation	173	1%
MAINSTREAMING	Mainstreaming	153	1%
LINGUISTICS	Theoretical Linguistics	152	1%
RC	Refugee concerns	150	1%
LDSN	Learning Disorders/Special Needs	143	1%
EMPLOYMENT	Employment issues/Certification	118	0%
PUBLICPOLICY	Public policy	91	0%
STYLISTICS	Stylistics	31	0%

Sorted in order of prevalence.

** Note: Members are encouraged to choose multiple areas of expertise and some members do not choose any areas of expertise. The total number of distinct members (6,937) represented in this report is less than the total number of active members as indicated elsewhere in this report.*

Areas of Expertise are separate from official TESOL interest sections or Areas of Interest. Areas of expertise represent distinct areas in which a member may be experienced in, rather than official entities in which a member is involved.

Areas of interest which have a very low count may be recent additions to the AOI list, or may reflect overall trends in membership.