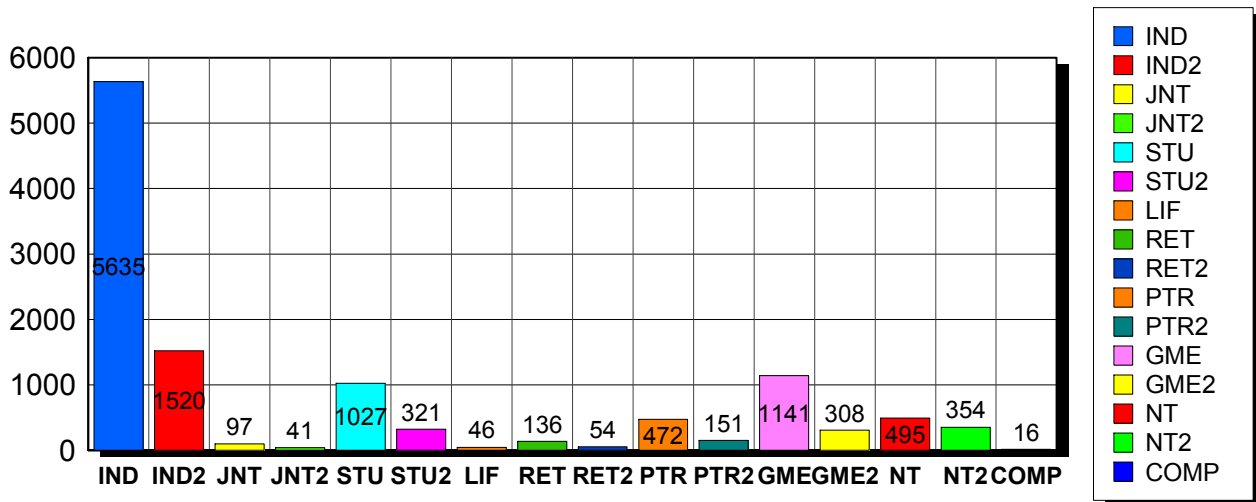


7/13/2011

Membership Statistics: Grand totals for basic membership, by member type

		<u># Memberships</u>	<u># Members</u>
IND	BASIC	5,635	5,635
IND2	BASIC	1,520	1,520
JNT	BASIC	97	194
JNT2	BASIC	41	82
STU	BASIC	1,027	1,027
STU2	BASIC	321	321
LIF	BASIC	46	46
RET	BASIC	136	136
RET2	BASIC	54	54
PTR	BASIC	472	472
PTR2	BASIC	151	151
GME	BASIC	1,141	1,141
GME2	BASIC	308	308
NT	BASIC	495	495
NT2	BASIC	354	354
COMP	BASIC	16	16
Grand Total:		11,814	11,952

Member Types



Note: in all general statistic reports, joint household memberships are treated as "one" member EXCEPT in the second column of this report, where joints are counted as two people, providing the most accurate count of the number of TESOL members.

This report is based on members paid through 6/30/2011 or later.

Country/State/Province	Total	
AFGHANISTAN	3	0.0%
ALAND ISLANDS	1	0.0%
ALBANIA	10	0.1%
ALGERIA	6	0.1%
AMERICAN SAMOA	1	0.0%
ANGOLA	2	0.0%
ARGENTINA	32	0.3%
ARMENIA	6	0.1%
AUSTRALIA	71	0.6%
AUSTRIA	3	0.0%
AZERBAIJAN	4	0.0%
BAHRAIN	5	0.0%
BANGLADESH	23	0.2%
BELARUS	2	0.0%
BELGIUM	2	0.0%
BENIN	2	0.0%
BOLIVIA	11	0.1%
BOSNIA AND HERZEGOVINA	1	0.0%
BOTSWANA	1	0.0%
BRAZIL	104	0.9%
BRUNEI DARUSSALAM	1	0.0%
BULGARIA	3	0.0%
BURKINA FASO	3	0.0%
CAMBODIA	7	0.1%
CAMEROON	12	0.1%
Canada	1	0.0%
CANADA		
<i>CANADA</i>	<i>1</i>	
<i>CANADA</i>	<i>Alberta</i>	<i>52</i>
<i>CANADA</i>	<i>British Columbia</i>	<i>106</i>
<i>CANADA</i>	<i>Manitoba</i>	<i>18</i>
<i>CANADA</i>	<i>New Brunswick</i>	<i>22</i>
<i>CANADA</i>	<i>Newfoundland</i>	<i>3</i>
<i>CANADA</i>	<i>Nova Scotia</i>	<i>7</i>
<i>CANADA</i>	<i>Ontario</i>	<i>103</i>
<i>CANADA</i>	<i>Quebec</i>	<i>24</i>
<i>CANADA</i>	<i>Saskatchewan</i>	<i>10</i>
CANADA	346	2.9%
CAYMAN ISLANDS	1	0.0%
CENTRAL AFRICAN REPUBLIC	1	0.0%
CHILE	28	0.2%
CHINA	91	0.8%
COLOMBIA	38	0.3%
COSTA RICA	22	0.2%
COTE D'IVOIRE	1	0.0%
CROATIA	5	0.0%
CYPRUS	3	0.0%
CZECH REPUBLIC	6	0.1%
DENMARK	1	0.0%
DOMINICAN REPUBLIC	13	0.1%
ECUADOR	29	0.2%
EGYPT	26	0.2%
EL SALVADOR	5	0.0%
ESTONIA	1	0.0%
ETHIOPIA	2	0.0%
FINLAND	6	0.1%
FRANCE	8	0.1%

GEORGIA	5	0.0%
GERMANY	23	0.2%
GHANA	1	0.0%
GREECE	6	0.1%
GUAM	3	0.0%
GUATEMALA	17	0.1%
HAITI	18	0.2%
HONDURAS	5	0.0%
HONG KONG	12	0.1%
HONG KONG SAR CHINA	25	0.2%
HUNGARY	1	0.0%
INDIA	29	0.2%
INDONESIA	37	0.3%
IRAN	30	0.3%
IRAN, ISLAMIC REPUBLIC OF	3	0.0%
IRAQ	49	0.4%
IRELAND	2	0.0%
ISRAEL	17	0.1%
ITALY	17	0.1%
JAMAICA	1	0.0%
JAPAN	448	3.8%
JORDAN	5	0.0%
KAZAKHSTAN	13	0.1%
KENYA	1	0.0%
KOREA, REPUBLIC OF	35	0.3%
KOSOVO (UNMIK)	1	0.0%
KUWAIT	20	0.2%
KYRGYZSTAN	3	0.0%
LAOS	10	0.1%
LATVIA	1	0.0%
LEBANON	9	0.1%
LIBYA	4	0.0%
LITHUANIA	3	0.0%
MACAO	5	0.0%
MACEDONIA	3	0.0%
MADAGASCAR	7	0.1%
MALAYSIA	19	0.2%
MALDIVES	2	0.0%
MARSHALL ISLANDS	3	0.0%
MARTINIQUE	1	0.0%
MAURITIUS	1	0.0%
MEXICO	165	1.4%
MICRONESIA, FED STATES OF	1	0.0%
MOLDOVA, REPUBLIC OF	3	0.0%
MONGOLIA	19	0.2%
MOROCCO	21	0.2%
MOZAMBIOUE	1	0.0%
NAMIBIA	1	0.0%
NEPAL	2	0.0%
NETHERLANDS	6	0.1%
NEW ZEALAND	12	0.1%
NICARAGUA	2	0.0%
NIGER	1	0.0%
NIGERIA	1	0.0%
NORWAY	4	0.0%
OMAN	8	0.1%
PAKISTAN	11	0.1%
PALAU	5	0.0%
PALESTINIAN TERRITORY	2	0.0%
PANAMA	32	0.3%
PARAGUAY	2	0.0%

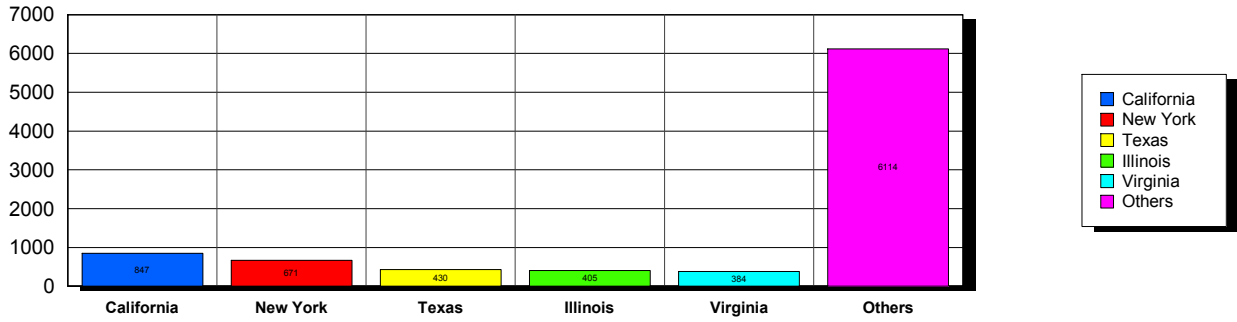
PEOPLES REP OF CHINA	48	0.4%
PERU	87	0.7%
PHILIPPINES	40	0.3%
POLAND	11	0.1%
PORTUGAL	1	0.0%
OATAR	31	0.3%
ROMANIA	3	0.0%
RUSSIA	39	0.3%
RUSSIAN FEDERATION	11	0.1%
RWANDA	6	0.1%
SAO TOME AND PRINCIPE	1	0.0%
SAUDI ARABIA	54	0.5%
SENEGAL	9	0.1%
SERBIA	5	0.0%
SIERRA LEONE	1	0.0%
SINGAPORE	18	0.2%
SLOVAKIA	1	0.0%
SOUTH AFRICA	6	0.1%
SOUTH KOREA	59	0.5%
SPAIN	19	0.2%
SRI LANKA	1	0.0%
SUDAN	4	0.0%
SWAZILAND	1	0.0%
SWEDEN	4	0.0%
SWITZERLAND	9	0.1%
SYRIAN ARAB REPUBLIC	1	0.0%
TAIWAN	25	0.2%
TAIWAN ROC	44	0.4%
TAIWAN, PROVINCE OF CHINA	1	0.0%
TAJKISTAN	1	0.0%
THAILAND	40	0.3%
TRINIDAD AND TOBAGO	4	0.0%
TUNISIA	5	0.0%
TURKEY	39	0.3%
TURKMENISTAN	2	0.0%
UGANDA	1	0.0%
UKRAINE	15	0.1%
UNITED ARAB EMIRATES	54	0.5%
UNITED KINGDOM	52	0.4%
URUGUAY	16	0.1%
US MINOR OUTLYING ISLANDS	4	0.0%
USA		
<i>USA</i>	<i>32</i>	
<i>USA</i>	<i>Alabama</i>	<i>96</i>
<i>USA</i>	<i>Alaska</i>	<i>26</i>
<i>USA</i>	<i>American Embassy</i>	<i>23</i>
<i>USA</i>	<i>Arizona</i>	<i>199</i>
<i>USA</i>	<i>Arkansas</i>	<i>98</i>
<i>USA</i>	<i>Armed Forces</i>	<i>9</i>
<i>USA</i>	<i>Armed Frces Americas</i>	<i>2</i>
<i>USA</i>	<i>British Columbia</i>	<i>1</i>
<i>USA</i>	<i>California</i>	<i>848</i>
<i>USA</i>	<i>Colorado</i>	<i>166</i>
<i>USA</i>	<i>Connecticut</i>	<i>158</i>
<i>USA</i>	<i>Delaware</i>	<i>36</i>
<i>USA</i>	<i>District of Columbia</i>	<i>185</i>
<i>USA</i>	<i>Florida</i>	<i>375</i>
<i>USA</i>	<i>Georgia</i>	<i>238</i>
<i>USA</i>	<i>Guam</i>	<i>6</i>
<i>USA</i>	<i>Hawaii</i>	<i>67</i>
<i>USA</i>	<i>Idaho</i>	<i>33</i>

USA	Illinois	405	
USA	Indiana	168	
USA	Iowa	104	
USA	Kansas	94	
USA	Kentucky	70	
USA	Louisiana	96	
USA	Maine	37	
USA	Marshall Islands	1	
USA	Maryland	305	
USA	Massachusetts	367	
USA	Michigan	208	
USA	Minnesota	162	
USA	Mississippi	66	
USA	Missouri	157	
USA	Montana	17	
USA	Nebraska	36	
USA	Nevada	63	
USA	New Hampshire	72	
USA	New Jersey	259	
USA	New Mexico	57	
USA	New York	671	
USA	North Carolina	153	
USA	North Dakota	24	
USA	Ohio	210	
USA	Oklahoma	56	
USA	Ontario	1	
USA	Oregon	197	
USA	Palau	1	
USA	Pennsylvania	351	
USA	Puerto Rico	86	
USA	Rhode Island	53	
USA	South Carolina	59	
USA	South Dakota	16	
USA	Tennessee	115	
USA	Texas	428	
USA	Utah	112	
USA	Vermont	67	
USA	Virginia	383	
USA	Washington	268	
USA	West Virginia	29	
USA	Wisconsin	184	
USA	Wyoming	20	
USA		8,826	74.7%
UZBEKISTAN		5	0.0%
VENEZUELA		21	0.2%
VIET NAM		14	0.1%
VIETNAM		20	0.2%
VIRGIN ISLANDS, U.S.		9	0.1%
YEMEN		4	0.0%
Grand Total:		11,816	

155 distinct countries represented.

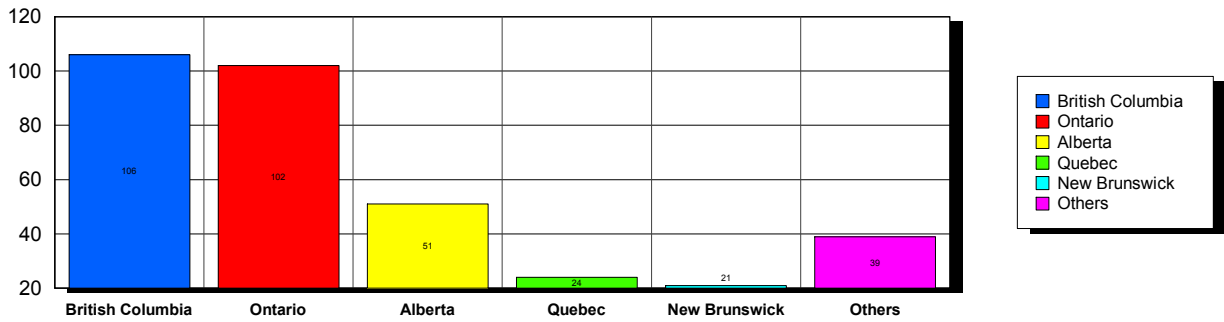
USA

Top 5 States per Country

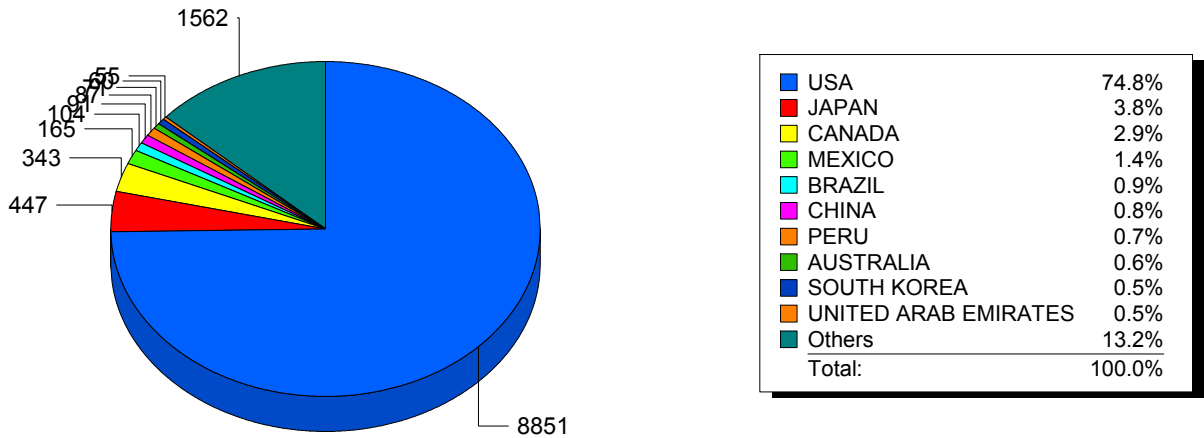


CANADA

Top 5 States per Country



Top 10 Countries



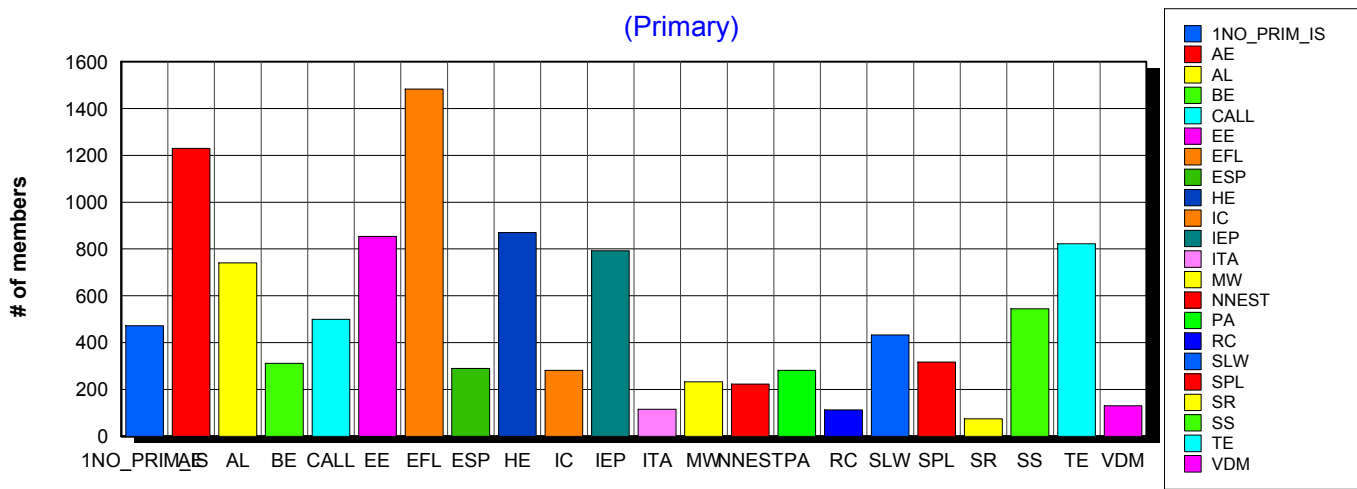
7/13/2011 **Basic statistics on Primary vs. other memberships in interest sections. For members paid through 6/30/2011 or later.**

			<i>Primary versus other</i>	
No Primary Interest Section	1.2%	478	472	6
Adult Education	7.1%	2,895	1,230	1,665
Applied Linguistics	6.2%	2,504	741	1,763
Bilingual Education	3.8%	1,561	312	1,249
Computer-Assisted Language Learning	5.4%	2,192	500	1,692
Elementary Education	4.6%	1,874	853	1,021
English as a Foreign Language	8.3%	3,353	1,483	1,870
English for Specific Purposes	4.4%	1,801	289	1,512
Higher Education	6.1%	2,460	870	1,590
Intercultural Communication	4.7%	1,904	281	1,623
Intensive English Programs	5.7%	2,299	793	1,506
International Teaching Assistants	2.5%	1,003	115	888
Materials Writers	3.5%	1,424	232	1,192
Nonnative English Speakers in TESOL	3.2%	1,314	223	1,091
Program Administration	3.3%	1,353	281	1,072
Refugee Concerns	2.3%	944	112	832
Second Language Writing	5.9%	2,384	433	1,951
Speech, Pronunciation, and Listening	5.3%	2,139	317	1,822
Social Responsibility	2.1%	851	75	776
Secondary Schools	3.7%	1,521	545	976
Teacher Education	7.1%	2,871	823	2,048
Video & Digital Media	3.7%	1,497	130	1,367
<i>11,133 distinct members</i>		Total # of IS memberships	40,622	11,110 29,512

The total count is the number of IS memberships total and may either be LESS or MORE than the actual number of individual members of TESOL. Due to open access to Interest Sections, these numbers may fluctuate considerably each month. For instance, one member may have selected four interest sections, while some members may belong to none.

Interest Sections

(Primary)

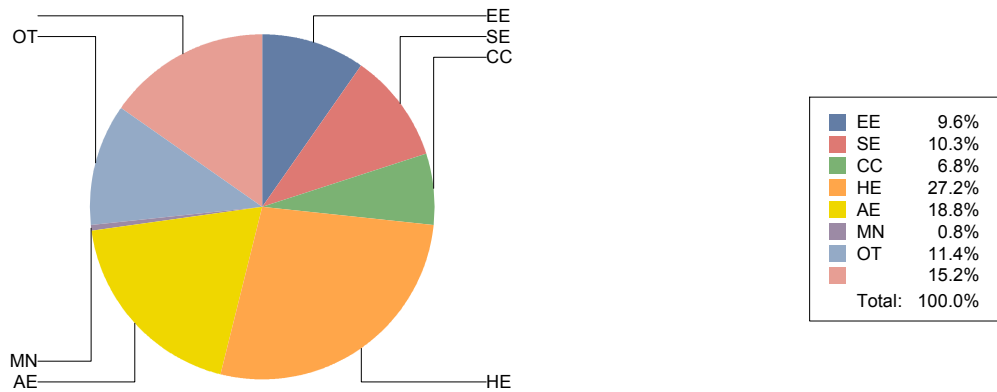


Basic Statistics on Area of Work (Members paid through >= 6/30/2011)

Elementary Education	EE	1,135	9.6%
Secondary Education	SE	1,209	10.3%
Community/2yr College	CC	798	6.8%
Postsecondary Education	HE	3,198	27.2%
Adult Education	AE	2,216	18.8%
Mainstream	MN	95	0.8%
Other	OT	1,338	11.4%
		1,789	15.2%
		11,778	

Only members who selected an area of work are included on this report. Other members may not have responded to this question and are excluded from the count.

Areas of Work



(Blanks indicate no response)

Statistics on Areas of Interest (Members paid through >= 6/30/2011)

<u>CODE</u>	<u>DESCRIPTION</u>	<u>TOTAL*</u>	<u>% of TOTAL*</u>
EFL	English as a foreign language	3,061	5%
CURRICULUM	Materials development/Curriculum	2,841	4%
SLA	Second language acquisition	2,810	4%
TE	Teacher education	2,746	4%
AL	Applied linguistics	2,547	4%
IC	Multiculturalism/intercultural communications	2,534	4%
AE	Adult education	2,507	4%
WRITING	Writing/composition	2,471	4%
CALL	Technology in education	2,415	4%
CONTENT	Content-based instruction	2,258	3%
HE	Higher education	2,222	3%
PROFDEV	Professional development	2,176	3%
IEP	Intensive English programs	2,151	3%
READING	Reading/literacy	2,091	3%
SP	Speaking/pronunciation	2,017	3%
GRAMMAR	Grammar	1,920	3%
ASSESS	Assessment/testing	1,895	3%
ESP	English for specific purposes	1,731	3%
RS	Research	1,563	2%
BE	Bilingual education	1,489	2%
DISTANCE	Distance learning/Online Education	1,344	2%
VOCAB	Vocabulary/Lexicon	1,319	2%
EE	Elementary/primary education	1,267	2%
PA	Program administration	1,256	2%
SS	Secondary education	1,108	2%
SOCIAL	Social/global/political concerns	1,104	2%
ISKILL	Integrated Skills	1,103	2%
WORKPLACE	Workplace English instruction/Business English	1,079	2%
LISTEN	Listening	1,074	2%
VI	Video and digital media	1,020	2%
COMMCOLL	Community college/technical ed	875	1%
LIT	Literature	803	1%
RC	Refugee concerns	772	1%
STANDARDS	Standards	735	1%
ITA	International teaching assistants	695	1%
LINGUISTICS	Theoretical Linguistics	681	1%
FAMILY	Community/family outreach	641	1%
EMPLOYMENT	Employment issues/Certification	571	1%
LDSN	Learning Disorders/Special Needs	553	1%
PUBLICPOLICY	Public policy	479	1%
MAINSTREAMING	Mainstreaming	461	1%
NNES	NNES/NES issues	457	1%
ACCRED	Accreditation	382	1%
ARTS	Arts/Media/Science/Math/Social Science	362	1%
STYLISTICS	Stylistics	154	0%

Sorted in order of prevalence.

** Note: Members are encouraged to choose multiple areas of interest and some members do not choose any areas of interest. The total number of distinct members (8,729) represented in this report is less than the total number of active members as indicated elsewhere in this report.*

Areas of interest are separate from official TESOL interest sections. Areas of interest represent distinct areas in which a member may be interested, rather than official entities in which a member is involved.

Areas of interest which have a very low count may be recent additions to the AOI list, or may reflect overall trends in membership.

Statistics on Areas of Expertise (Members paid through >= 6/30/2011)

<u>CODE</u>	<u>DESCRIPTION</u>	<u>TOTAL*</u>	<u>% of TOTAL*</u>
EFL	English as a foreign language	1,931	7%
AE	Adult education	1,544	6%
CURRICULUM	Materials development/Curriculum	1,379	5%
WRITING	Writing/composition	1,292	5%
AL	Applied linguistics	1,224	4%
IEP	Intensive English programs	1,172	4%
TE	Teacher education	1,169	4%
SLA	Second language acquisition	1,143	4%
HE	Higher education	1,078	4%
CONTENT	Content-based instruction	1,015	4%
GRAMMAR	Grammar	992	4%
IC	Multiculturalism/intercultural communications	889	3%
EE	Elementary/primary education	850	3%
CALL	Technology in education	805	3%
READING	Reading/literacy	788	3%
ESP	English for specific purposes	784	3%
SP	Speaking/pronunciation	774	3%
PROFDEV	Professional development	724	3%
ASSESS	Assessment/testing	699	3%
PA	Program administration	612	2%
SS	Secondary education	581	2%
BE	Bilingual education	563	2%
ISKILL	Integrated Skills	541	2%
COMMCOLL	Community college/technical ed	495	2%
DISTANCE	Distance learning/Online Education	477	2%
RS	Research	447	2%
WORKPLACE	Workplace English instruction/Business English	437	2%
LISTEN	Listening	400	1%
VOCAB	Vocabulary/Lexicon	363	1%
LIT	Literature	352	1%
SOCIAL	Social/global/political concerns	265	1%
VI	Video and digital media	237	1%
ITA	International teaching assistants	203	1%
FAMILY	Community/family outreach	189	1%
ARTS	Arts/Media/Science/Math/Social Science	186	1%
NNES	NNES/NES issues	180	1%
STANDARDS	Standards	179	1%
ACCRED	Accreditation	168	1%
RC	Refugee concerns	150	1%
LINGUISTICS	Theoretical Linguistics	147	1%
MAINSTREAMING	Mainstreaming	147	1%
LDSN	Learning Disorders/Special Needs	141	1%
EMPLOYMENT	Employment issues/Certification	118	0%
PUBLICPOLICY	Public policy	87	0%
STYLISTICS	Stylistics	32	0%

Sorted in order of prevalence.

** Note: Members are encouraged to choose multiple areas of expertise and some members do not choose any areas of expertise. The total number of distinct members (6,833) represented in this report is less than the total number of active members as indicated elsewhere in this report.*

Areas of Expertise are separate from official TESOL interest sections or Areas of Interest. Areas of expertise represent distinct areas in which a member may be experienced in, rather than official entities in which a member is involved.

Areas of interest which have a very low count may be recent additions to the AOI list, or may reflect overall trends in membership.