

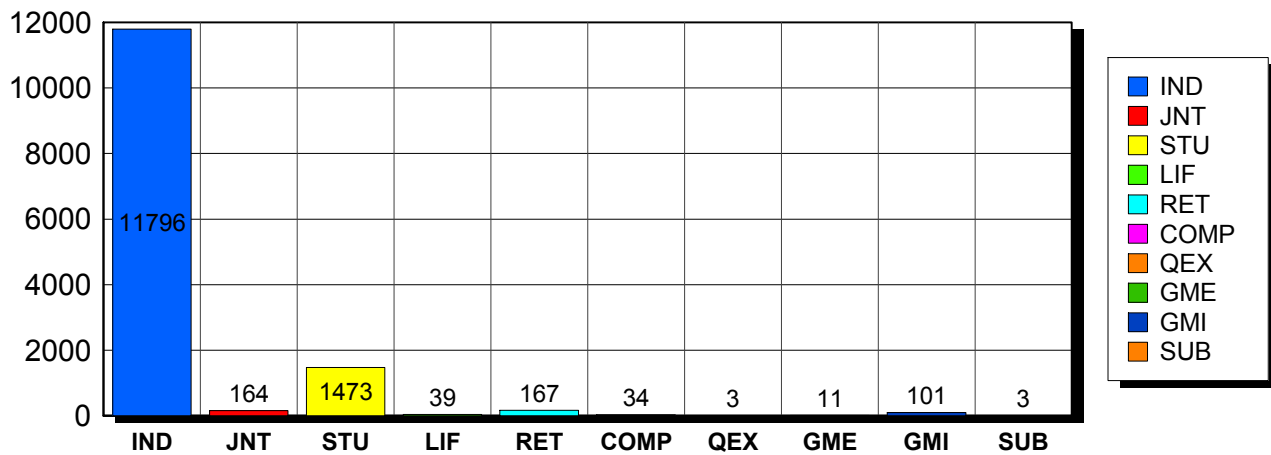
This report is based on members paid through 1/31/2005 or later.

2/10/2005

### Membership Statistics: Grand totals for basic membership, by member type

		<u># Memberships</u>	<u># Members</u>
IND	BASIC	11,796	11,796
JNT	BASIC	164	328
STU	BASIC	1,473	1,473
LIF	BASIC	39	39
RET	BASIC	167	167
COMP	BASIC	34	34
QEX	BASIC	3	3
GME	BASIC	11	11
GMI	BASIC	101	101
SUB	BASIC	3	3
<b>Grand Total:</b>		<b>13,791</b>	<b>13,955</b>

### Member Types



Note: in all general statistic reports, joint household memberships are treated as "one" member EXCEPT in the second column of this report, where joints are counted as two people, providing the most accurate count of the number of TESOL members.

This report is based on members paid through 1/31/2005 or later.

Country/State/Province	Total	
<b>ALBANIA</b>	<b>2</b>	<b>0.0%</b>
<b>ALGERIA</b>	<b>4</b>	<b>0.0%</b>
<b>ANGOLA</b>	<b>1</b>	<b>0.0%</b>
<b>ANGUILLA</b>	<b>1</b>	<b>0.0%</b>
<b>ARGENTINA</b>	<b>20</b>	<b>0.1%</b>
<b>ARMENIA</b>	<b>11</b>	<b>0.1%</b>
<b>ARUBA</b>	<b>1</b>	<b>0.0%</b>
<b>AUSTRALIA</b>	<b>86</b>	<b>0.6%</b>
<b>AUSTRIA</b>	<b>9</b>	<b>0.1%</b>
<b>BAHRAIN</b>	<b>4</b>	<b>0.0%</b>
<b>BANGLADESH</b>	<b>4</b>	<b>0.0%</b>
<b>BELGIUM</b>	<b>7</b>	<b>0.1%</b>
<b>BELIZE</b>	<b>3</b>	<b>0.0%</b>
<b>BENIN</b>	<b>1</b>	<b>0.0%</b>
<b>BOLIVIA</b>	<b>2</b>	<b>0.0%</b>
<b>BOTSWANA</b>	<b>1</b>	<b>0.0%</b>
<b>BRAZIL</b>	<b>69</b>	<b>0.5%</b>
<b>BRUNEL DARUSSALAM</b>	<b>1</b>	<b>0.0%</b>
<b>BULGARIA</b>	<b>1</b>	<b>0.0%</b>
<b>BURKINA FASO</b>	<b>1</b>	<b>0.0%</b>
<b>CAMEROON</b>	<b>1</b>	<b>0.0%</b>
<b>CANADA</b>		
<i>CANADA Alberta</i>	<i>36</i>	
<i>CANADA British Columbia</i>	<i>95</i>	
<i>CANADA Manitoba</i>	<i>15</i>	
<i>CANADA New Brunswick</i>	<i>5</i>	
<i>CANADA Newfoundland</i>	<i>2</i>	
<i>CANADA Nova Scotia</i>	<i>6</i>	
<i>CANADA Nunavut</i>	<i>1</i>	
<i>CANADA Ontario</i>	<i>134</i>	
<i>CANADA Quebec</i>	<i>24</i>	
<i>CANADA Saskatchewan</i>	<i>11</i>	
<i>CANADA Yukon Territory</i>	<i>1</i>	
<b>CANADA</b>	<b>330</b>	<b>2.4%</b>
<b>CAYMAN ISLANDS</b>	<b>1</b>	<b>0.0%</b>
<b>CHILE</b>	<b>7</b>	<b>0.1%</b>
<b>COLOMBIA</b>	<b>19</b>	<b>0.1%</b>
<b>COSTA RICA</b>	<b>14</b>	<b>0.1%</b>
<b>COTE D'IVOIRE</b>	<b>1</b>	<b>0.0%</b>
<b>CROATIA</b>	<b>13</b>	<b>0.1%</b>
<b>CYPRUS</b>	<b>3</b>	<b>0.0%</b>
<b>CZECH REPUBLIC</b>	<b>6</b>	<b>0.0%</b>
<b>DENMARK</b>	<b>3</b>	<b>0.0%</b>
<b>DOMINICAN REPUBLIC</b>	<b>9</b>	<b>0.1%</b>
<b>ECUADOR</b>	<b>13</b>	<b>0.1%</b>
<b>EGYPT</b>	<b>40</b>	<b>0.3%</b>
<b>EL SALVADOR</b>	<b>1</b>	<b>0.0%</b>
<b>ETHIOPIA</b>	<b>2</b>	<b>0.0%</b>
<b>FINLAND</b>	<b>10</b>	<b>0.1%</b>
<b>FRANCE</b>	<b>16</b>	<b>0.1%</b>
<b>FRENCH POLYNESIA</b>	<b>1</b>	<b>0.0%</b>
<b>GEORGIA</b>	<b>2</b>	<b>0.0%</b>
<b>GERMANY</b>	<b>51</b>	<b>0.4%</b>
<b>GHANA</b>	<b>1</b>	<b>0.0%</b>
<b>GREECE</b>	<b>19</b>	<b>0.1%</b>
<b>GUATEMALA</b>	<b>7</b>	<b>0.1%</b>
<b>HAITI</b>	<b>1</b>	<b>0.0%</b>

HONDURAS	1	0.0%
HONG KONG SAR CHINA	51	0.4%
HUNGARY	11	0.1%
ICELAND	1	0.0%
INDIA	9	0.1%
INDONESIA	24	0.2%
IRAN	4	0.0%
IRELAND	4	0.0%
ISRAEL	30	0.2%
ITALY	23	0.2%
JAPAN	692	5.0%
JORDAN	3	0.0%
KAZAKHSTAN	5	0.0%
KENYA	1	0.0%
KUWAIT	12	0.1%
KYRGYZSTAN	1	0.0%
LATVIA	2	0.0%
LEBANON	18	0.1%
LITHUANIA	3	0.0%
MACAU SAR CHINA	6	0.0%
MACEDONIA	1	0.0%
MADAGASCAR	1	0.0%
MALAYSIA	11	0.1%
MALI	2	0.0%
MALTA	1	0.0%
MARTINIQUE	1	0.0%
MEXICO	91	0.7%
MOLDOVA	5	0.0%
MONGOLIA	1	0.0%
MOROCCO	11	0.1%
NAMIBIA	2	0.0%
NETHERLANDS	8	0.1%
NEW ZEALAND	37	0.3%
NICARAGUA	5	0.0%
NIGER	1	0.0%
NIGERIA	6	0.0%
NORWAY	4	0.0%
OMAN	5	0.0%
PAKISTAN	38	0.3%
PALESTINE	2	0.0%
PANAMA	5	0.0%
PARAGUAY	2	0.0%
PEOPLES REP OF CHINA	97	0.7%
PERU	69	0.5%
PHILIPPINES	21	0.2%
POLAND	6	0.0%
PORTUGAL	4	0.0%
QATAR	5	0.0%
ROMANIA	5	0.0%
RUSSIA	49	0.4%
RWANDA	1	0.0%
SAUDI ARABIA	32	0.2%
SCOTLAND	3	0.0%
SENEGAL	7	0.1%
SERBIA AND MONTENEGRO	2	0.0%
SINGAPORE	12	0.1%
SLOVAKIA	2	0.0%
SLOVENIA	3	0.0%
SOUTH AFRICA	9	0.1%
SOUTH KOREA	135	1.0%
SPAIN	22	0.2%

<b>SWAZILAND</b>		<b>1</b>	<b>0.0%</b>
<b>SWEDEN</b>		<b>11</b>	<b>0.1%</b>
<b>SWITZERLAND</b>		<b>13</b>	<b>0.1%</b>
<b>TAIWAN ROC</b>		<b>87</b>	<b>0.6%</b>
<b>TAJKISTAN</b>		<b>3</b>	<b>0.0%</b>
<b>TANZANIA</b>		<b>1</b>	<b>0.0%</b>
<b>THAILAND</b>		<b>40</b>	<b>0.3%</b>
<b>TOGO</b>		<b>1</b>	<b>0.0%</b>
<b>TRINIDAD AND TOBAGO</b>		<b>2</b>	<b>0.0%</b>
<b>TUNISIA</b>		<b>3</b>	<b>0.0%</b>
<b>TURKEY</b>		<b>51</b>	<b>0.4%</b>
<b>UGANDA</b>		<b>7</b>	<b>0.1%</b>
<b>UKRAINE</b>		<b>18</b>	<b>0.1%</b>
<b>UNITED ARAB EMIRATES</b>		<b>74</b>	<b>0.5%</b>
<b>UNITED KINGDOM</b>		<b>70</b>	<b>0.5%</b>
<b>URUGUAY</b>		<b>5</b>	<b>0.0%</b>
<b>USA</b>			
USA	Alabama	57	
USA	Alaska	32	
USA	American Embassy	27	
USA	Arizona	209	
USA	Arkansas	50	
USA	Armed Forces	9	
USA	Armed Frces Americas	3	
USA	California	1758	
USA	Colorado	205	
USA	Connecticut	156	
USA	Delaware	35	
USA	District of Columbia	138	
USA	Florida	411	
USA	Georgia	257	
USA	Guam	7	
USA	Hawaii	112	
USA	Idaho	36	
USA	Illinois	495	
USA	Indiana	146	
USA	Iowa	118	
USA	Kansas	91	
USA	Kentucky	77	
USA	Lousiana	53	
USA	Maine	49	
USA	Marshall Islands	4	
USA	Maryland	390	
USA	Massachusetts	362	
USA	Michigan	269	
USA	Micronesia	3	
USA	Minnesota	240	
USA	Mississippi	35	
USA	Missouri	160	
USA	Montana	17	
USA	N Mariana Islands	2	
USA	Nebraska	43	
USA	Nevada	75	
USA	New Hampshire	63	
USA	New Jersey	383	
USA	New Mexico	70	
USA	New York	888	
USA	North Carolina	161	
USA	North Dakota	10	

<i>USA</i>	<i>Ohio</i>	244	
<i>USA</i>	<i>Oklahoma</i>	61	
<i>USA</i>	<i>Oregon</i>	208	
<i>USA</i>	<i>Pennsylvania</i>	445	
<i>USA</i>	<i>Puerto Rico</i>	56	
<i>USA</i>	<i>Rhode Island</i>	85	
<i>USA</i>	<i>South Carolina</i>	71	
<i>USA</i>	<i>South Dakota</i>	6	
<i>USA</i>	<i>Tennessee</i>	133	
<i>USA</i>	<i>Texas</i>	634	
<i>USA</i>	<i>Utah</i>	142	
<i>USA</i>	<i>Vermont</i>	85	
<i>USA</i>	<i>Virgin Islands</i>	1	
<i>USA</i>	<i>Virginia</i>	449	
<i>USA</i>	<i>Washington</i>	373	
<i>USA</i>	<i>West Virginia</i>	22	
<i>USA</i>	<i>Wisconsin</i>	203	
<i>USA</i>	<i>Wyoming</i>	20	
<b>USA</b>		<b>10,944</b>	<b>79.4%</b>
<b>UZBEKISTAN</b>		<b>2</b>	<b>0.0%</b>
<b>VENEZUELA</b>		<b>15</b>	<b>0.1%</b>
<b>VIETNAM</b>		<b>14</b>	<b>0.1%</b>
<b>VIRGIN ISLANDS, BRITISH</b>		<b>1</b>	<b>0.0%</b>
<b>YEMEN</b>		<b>3</b>	<b>0.0%</b>
	<b>Grand Total:</b>	<b>13,791</b>	

128 distinct countries represented.

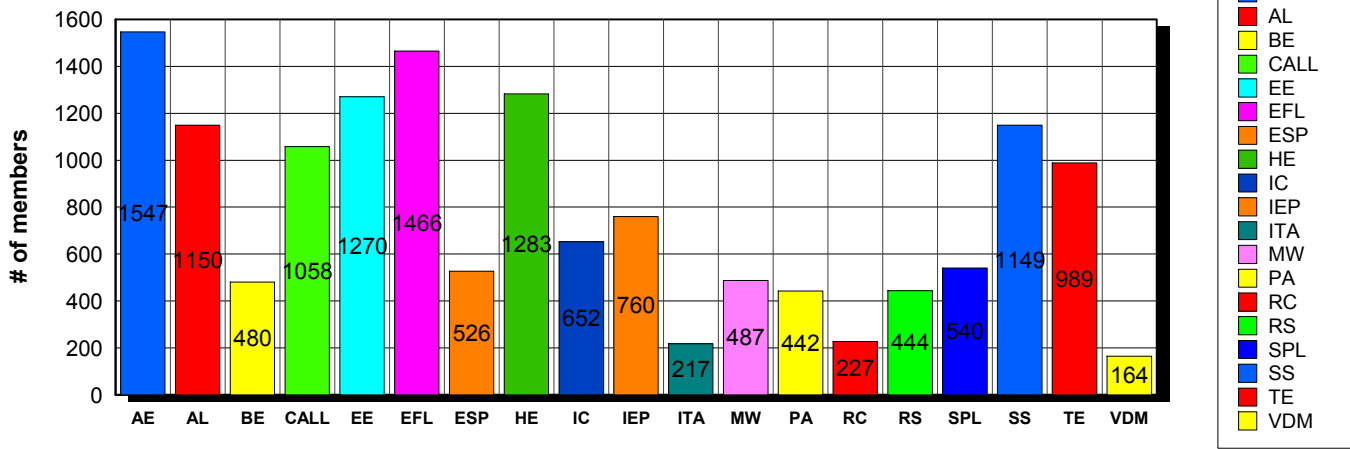
2/10/2005 **Basic statistics on complimentary and paid memberships in interest sections. For members paid through 1/31/2005 or later.**

		<i>free versus paid</i>		
Adult Education Interest Section	10.4%	1,547	1,422	125
Applied Linguistics Interest Section	7.7%	1,150	948	202
Bilingual Education Interest Section	3.2%	480	389	91
Computer-Assisted Language Learning Interest Section	7.1%	1,058	827	231
Elementary Education Interest Section	8.6%	1,270	1,154	116
English as a Foreign Language Interest Section	9.9%	1,466	1,255	211
English for Specific Purposes Interest Section	3.5%	526	406	120
ESL in Higher Education Interest Section	8.6%	1,283	1,130	153
Intercultural Communication Interest Section	4.4%	652	471	181
Intensive English Programs Interest Section	5.1%	760	642	118
International Teaching Assistants Interest Section	1.5%	217	165	52
Materials Writers Interest Section	3.3%	487	340	147
Program Administration Interest Section	3.0%	442	305	137
Refugee Concerns Interest Section	1.5%	227	158	69
Research Interest Section	3.0%	444	289	155
Speech/Pronunciation/Listening Interest Section	3.6%	540	378	162
ESL in Secondary Schools Interest Section	7.7%	1,149	1,023	126
Teacher Education Interest Section	6.7%	989	762	227
Video and Digital Media Interest Section	1.1%	164	94	70
<i>12,075 distinct members</i>	<b>Total # of IS memberships</b>	<b>14,851</b>	<b>12,158</b>	<b>2,693</b>

The total count is the number of IS memberships total and may either be LESS or MORE than the actual number of individual members of TESOL. For instance, one member may belong to four interest sections, while some members may belong to none.

### Interest Sections

(Complimentary and paid combined)



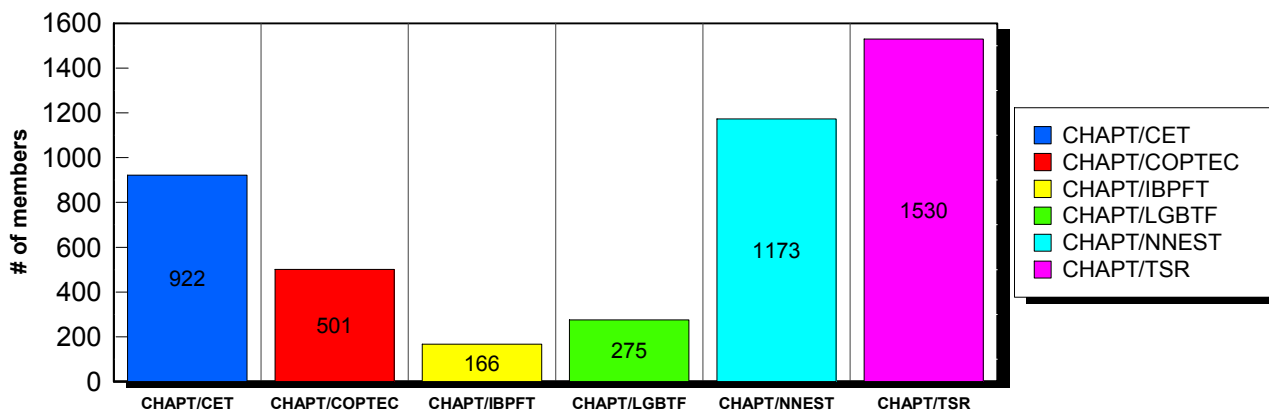
**Basic statistics on complimentary and paid memberships in caucuses  
For members paid through 1/31/2005 or later.**

		<i>free versus paid</i>		
Christian Educators in TESOL Caucus	20.2%	<b>922</b>	911	11
Caucus on Part-time Employment Conditions	11.0%	<b>501</b>	489	12
Int'l Black Professionals & Friends in TESOL Caucus	3.6%	<b>166</b>	150	16
Lesbian/Gay/Bisexual/Transgender & Friends Caucus	6.0%	<b>275</b>	263	12
Nonnative English Speakers in TESOL Caucus	25.7%	<b>1,173</b>	1,151	22
TESOLers for Social Responsibility Caucus	33.5%	<b>1,530</b>	1,499	31
<i>4,441 distinct members</i>	<b>Total # of caucus memberships</b>	<b>4,567</b>	4,463	104

The total count is the number of caucus memberships total and may either be LESS or MORE than the actual number of individual members of TESOL. For instance, one member may belong to four caucuses, while some members may belong to none.

**Caucuses**

(Complimentary and paid combined)

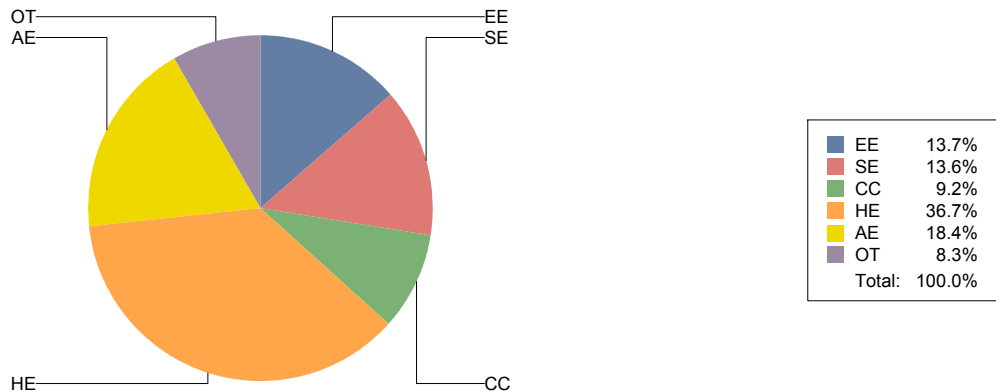


## Basic Statistics on Area of Work (Members paid through >= 1/31/2005)

<u>AREA OF WORK</u>		<u>EMPLOYED</u>	
Elementary Education	EE	1,585	13.7%
Secondary Education	SE	1,574	13.6%
Community/2yr College	CC	1,060	9.2%
Postsecondary Education	HE	4,240	36.7%
Adult Education	AE	2,123	18.4%
Other	OT	959	8.3%
		<b>11,541</b>	

Only members who selected an area of work are included on this report. Other members may not have responded to this question and are excluded from the count.

### Areas of Work



(Blanks indicate no response)



## Statistics on Areas of Interest (Members paid through >= 1/31/2005)

<u>CODE</u>	<u>DESCRIPTION</u>	<u>TOTAL*</u>	<u>% of TOTAL*</u>
EFL	English as a foreign language	4,692	7%
TE	Teacher education	4,365	6%
IC	Multiculturalism/intercultural communications	4,225	6%
CALL	Technology in education	3,431	5%
SP	Speaking/pronunciation/listening	3,015	4%
RS	Research	2,993	4%
BE	Bilingual education	2,677	4%
CURRICULUM	Curriculum/materials development	2,633	4%
ESP	English for specific purposes	2,349	3%
WRITING	Writing/composition	2,332	3%
AE	Adult education	2,280	3%
SLA	Second language acquisition	2,264	3%
GRAMMAR	Grammar/vocabulary	2,255	3%
READING	Reading/literacy/literature	2,230	3%
CONTENT	Content-based instruction	2,144	3%
AL	Applied linguistics	2,129	3%
PROFDEV	Professional development	2,118	3%
HE	Higher education	2,073	3%
ASSESS	Assessment/testing	2,000	3%
IEP	Intensive English programs	1,834	3%
LINGUISTICS	Linguistics	1,805	3%
SOCIAL	Social/global concerns	1,365	2%
SS	Secondary education	1,274	2%
ITA	International teaching assistants	1,271	2%
EE	Elementary/primary education	1,256	2%
MW	Materials writers	1,209	2%
PA	Program administration	1,133	2%
STANDARDS	Standards	962	1%
DISTANCE	Distance learning	842	1%
RC	Refugee concerns	801	1%
VI	Video and digital media	743	1%
PUBLICPOLICY	Public policy	644	1%
WORKPLACE	Workplace English instruction	222	0%
EAP	English for academic purposes	45	0%
COMMCOLL	Community college/technical ed	23	0%
NNES	NNES/NES issues	19	0%
FAMILY	Community/family outreach	13	0%
MAINSTREAMING	Mainstreaming	12	0%
EMPLOYMENT	Employment issues	9	0%
DEAF	Deaf education	4	0%

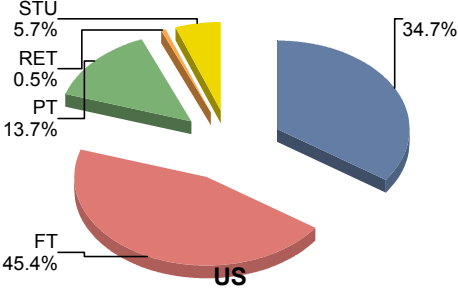
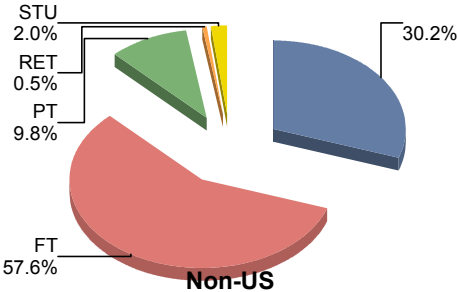
Sorted in order of prevalence.

\* Note: Members are encouraged to choose multiple areas of interest and some members do not choose any areas of interest. The total number of distinct members (10,211) represented in this report is less than the total number of active members as indicated elsewhere in this report.

Areas of interest are separate from official TESOL interest sections. Areas of interest represent distinct areas in which a member may be interested, rather than official entities in which a member is involved.

Areas of interest which have a very low count may be recent additions to the AOI list, or may reflect overall trends in membership.

**Basic Statistics on PT/FT Status, paid throughs >= 1/31/2005**



13,793 total members represented