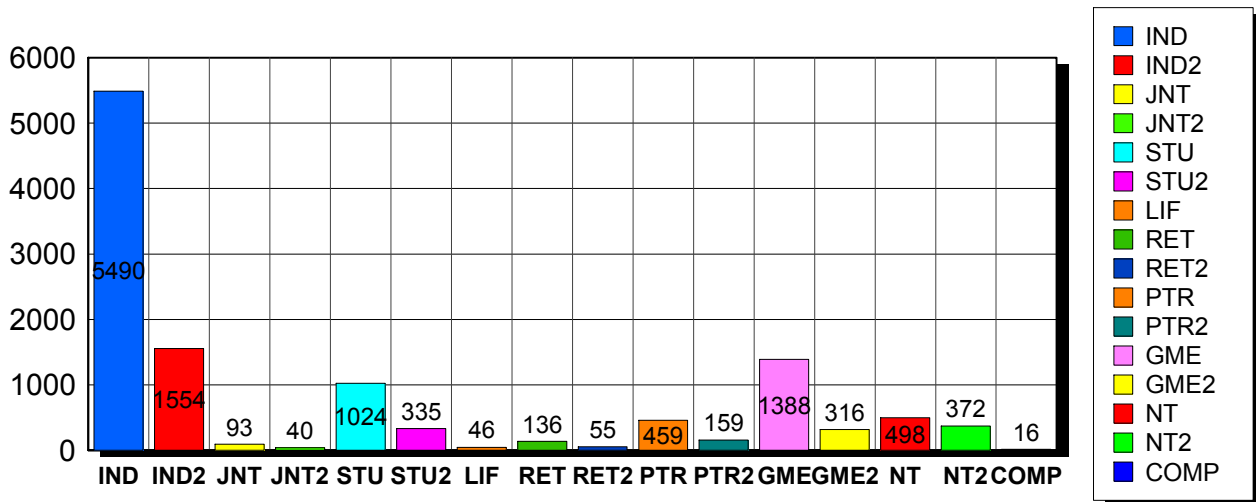


9/12/2011

Membership Statistics: Grand totals for basic membership, by member type

		<u># Memberships</u>	<u># Members</u>
IND	BASIC	5,490	5,490
IND2	BASIC	1,554	1,554
JNT	BASIC	93	186
JNT2	BASIC	40	80
STU	BASIC	1,024	1,024
STU2	BASIC	335	335
LIF	BASIC	46	46
RET	BASIC	136	136
RET2	BASIC	55	55
PTR	BASIC	459	459
PTR2	BASIC	159	159
GME	BASIC	1,388	1,388
GME2	BASIC	316	316
NT	BASIC	498	498
NT2	BASIC	372	372
COMP	BASIC	16	16
Grand Total:		11,981	12,114

Member Types



Note: in all general statistic reports, joint household memberships are treated as "one" member EXCEPT in the second column of this report, where joints are counted as two people, providing the most accurate count of the number of TESOL members.

This report is based on members paid through 8/31/2011 or later.

Country/State/Province	Total	
AFGHANISTAN	3	0.0%
ALBANIA	11	0.1%
ALGERIA	6	0.1%
ANGOLA	1	0.0%
ARGENTINA	30	0.3%
ARMENIA	5	0.0%
AUSTRALIA	70	0.6%
AUSTRIA	3	0.0%
AZERBAIJAN	5	0.0%
BAHRAIN	4	0.0%
BANGLADESH	24	0.2%
BELARUS	3	0.0%
BELGIUM	2	0.0%
BENIN	2	0.0%
BOLIVIA	12	0.1%
BOTSWANA	1	0.0%
BRAZIL	110	0.9%
BRUNEI DARUSSALAM	1	0.0%
BULGARIA	3	0.0%
BURKINA FASO	3	0.0%
CAMBODIA	7	0.1%
CAMEROON	12	0.1%
CANADA		
<i>CANADA</i>	<i>1</i>	
<i>CANADA</i> <i>Alberta</i>	<i>52</i>	
<i>CANADA</i> <i>British Columbia</i>	<i>107</i>	
<i>CANADA</i> <i>Manitoba</i>	<i>15</i>	
<i>CANADA</i> <i>New Brunswick</i>	<i>22</i>	
<i>CANADA</i> <i>Newfoundland</i>	<i>3</i>	
<i>CANADA</i> <i>Nova Scotia</i>	<i>7</i>	
<i>CANADA</i> <i>Ontario</i>	<i>102</i>	
<i>CANADA</i> <i>Quebec</i>	<i>24</i>	
<i>CANADA</i> <i>Saskatchewan</i>	<i>11</i>	
CANADA	344	2.9%
CAYMAN ISLANDS	1	0.0%
CENTRAL AFRICAN REPUBLIC	1	0.0%
CHILE	27	0.2%
CHINA	417	3.5%
COLOMBIA	40	0.3%
COSTA RICA	23	0.2%
COTE D'IVOIRE	2	0.0%
CROATIA	5	0.0%
CYPRUS	3	0.0%
CZECH REPUBLIC	6	0.1%
DENMARK	1	0.0%
DOMINICAN REPUBLIC	12	0.1%
ECUADOR	27	0.2%
EGYPT	23	0.2%
EL SALVADOR	5	0.0%
ESTONIA	1	0.0%
ETHIOPIA	2	0.0%
FINLAND	7	0.1%
FRANCE	8	0.1%
GEORGIA	5	0.0%
GERMANY	22	0.2%
GHANA	1	0.0%
GREECE	6	0.1%

GUAM	3	0.0%
GUATEMALA	16	0.1%
HAITI	15	0.1%
HONDURAS	5	0.0%
HONG KONG	11	0.1%
HONG KONG SAR CHINA	17	0.1%
HUNGARY	1	0.0%
INDIA	28	0.2%
INDONESIA	38	0.3%
IRAN	29	0.2%
IRAN, ISLAMIC REPUBLIC OF	3	0.0%
IRAQ	49	0.4%
IRELAND	2	0.0%
ISRAEL	17	0.1%
ITALY	14	0.1%
JAMAICA	1	0.0%
JAPAN	435	3.6%
JORDAN	7	0.1%
KAZAKHSTAN	10	0.1%
KENYA	1	0.0%
KOREA, REPUBLIC OF	32	0.3%
KOSOVO (UNMIK)	1	0.0%
KUWAIT	20	0.2%
KYRGYZSTAN	2	0.0%
LAOS	9	0.1%
LATVIA	1	0.0%
LEBANON	9	0.1%
LIBYA	5	0.0%
LITHUANIA	3	0.0%
MACAO	4	0.0%
MACEDONIA	3	0.0%
MADAGASCAR	7	0.1%
MALAYSIA	17	0.1%
MALDIVES	2	0.0%
MARSHALL ISLANDS	3	0.0%
MARTINIQUE	1	0.0%
MAURITIUS	1	0.0%
MEXICO	141	1.2%
MICRONESIA, FED STATES OF	1	0.0%
MOLDOVA, REPUBLIC OF	3	0.0%
MONGOLIA	21	0.2%
MOROCCO	22	0.2%
MOZAMBIQUE	1	0.0%
NAMIBIA	1	0.0%
NEPAL	3	0.0%
NETHERLANDS	6	0.1%
NETHERLANDS ANTILLES	1	0.0%
NEW ZEALAND	10	0.1%
NICARAGUA	2	0.0%
NIGER	1	0.0%
NORWAY	5	0.0%
OMAN	9	0.1%
PAKISTAN	11	0.1%
PALAU	5	0.0%
PALESTINIAN TERRITORY	2	0.0%
PANAMA	33	0.3%
PARAGUAY	3	0.0%
PEOPLES REP OF CHINA	4	0.0%
PERU	87	0.7%
PHILIPPINES	39	0.3%
POLAND	12	0.1%

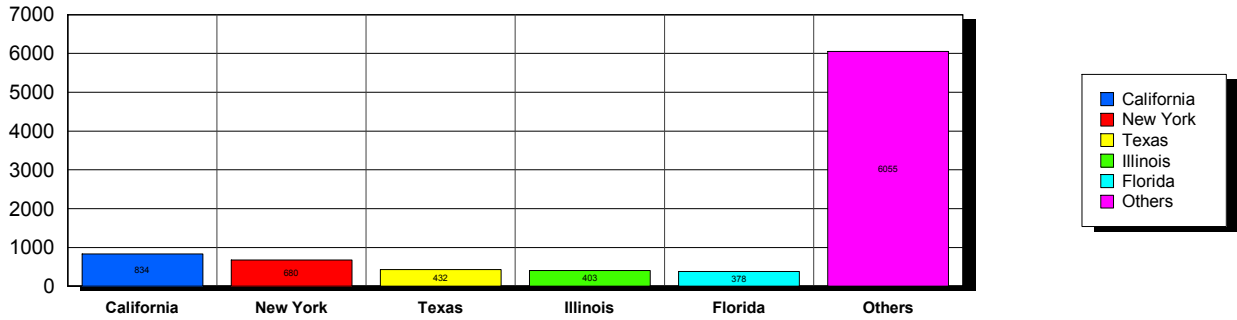
PORTUGAL		1	0.0%
OATAR		32	0.3%
ROMANIA		3	0.0%
RUSSIA		44	0.4%
RUSSIAN FEDERATION		13	0.1%
RWANDA		7	0.1%
SAO TOME AND PRINCIPE		1	0.0%
SAUDI ARABIA		55	0.5%
SCOTLAND		1	0.0%
SENEGAL		10	0.1%
SERBIA		5	0.0%
SIERRA LEONE		2	0.0%
SINGAPORE		18	0.2%
SLOVAKIA		1	0.0%
SOUTH AFRICA		6	0.1%
SOUTH KOREA		63	0.5%
SPAIN		18	0.2%
SRI LANKA		1	0.0%
SUDAN		4	0.0%
SWAZILAND		1	0.0%
SWEDEN		5	0.0%
SWITZERLAND		8	0.1%
SYRIAN ARAB REPUBLIC		1	0.0%
TAIWAN		24	0.2%
TAIWAN ROC		45	0.4%
TAIWAN, PROVINCE OF CHINA		1	0.0%
TAJKISTAN		1	0.0%
THAILAND		38	0.3%
TRINIDAD AND TOBAGO		4	0.0%
TUNISIA		5	0.0%
TURKEY		41	0.3%
TURKMENISTAN		2	0.0%
UGANDA		1	0.0%
UKRAINE		15	0.1%
UNITED ARAB EMIRATES		51	0.4%
UNITED KINGDOM		54	0.5%
URUGUAY		15	0.1%
USA			
<i>USA</i>		<i>25</i>	
<i>USA</i>	<i>Alabama</i>	<i>91</i>	
<i>USA</i>	<i>Alaska</i>	<i>24</i>	
<i>USA</i>	<i>American Embassy</i>	<i>21</i>	
<i>USA</i>	<i>Arizona</i>	<i>194</i>	
<i>USA</i>	<i>Arkansas</i>	<i>97</i>	
<i>USA</i>	<i>Armed Forces</i>	<i>8</i>	
<i>USA</i>	<i>Armed Frces Americas</i>	<i>2</i>	
<i>USA</i>	<i>British Columbia</i>	<i>2</i>	
<i>USA</i>	<i>California</i>	<i>831</i>	
<i>USA</i>	<i>Colorado</i>	<i>165</i>	
<i>USA</i>	<i>Connecticut</i>	<i>153</i>	
<i>USA</i>	<i>Delaware</i>	<i>34</i>	
<i>USA</i>	<i>District of Columbia</i>	<i>186</i>	
<i>USA</i>	<i>Florida</i>	<i>379</i>	
<i>USA</i>	<i>Georgia</i>	<i>233</i>	
<i>USA</i>	<i>Guam</i>	<i>6</i>	
<i>USA</i>	<i>Hawaii</i>	<i>68</i>	
<i>USA</i>	<i>Idaho</i>	<i>31</i>	
<i>USA</i>	<i>Illinois</i>	<i>402</i>	
<i>USA</i>	<i>Indiana</i>	<i>175</i>	
<i>USA</i>	<i>Iowa</i>	<i>105</i>	
<i>USA</i>	<i>Kansas</i>	<i>91</i>	

USA	Kentucky	66	
USA	Louisiana	98	
USA	Maine	39	
USA	Marshall Islands	1	
USA	Maryland	310	
USA	Massachusetts	370	
USA	Michigan	206	
USA	Minnesota	147	
USA	Mississippi	69	
USA	Missouri	147	
USA	Montana	17	
USA	Nebraska	34	
USA	Nevada	60	
USA	New Hampshire	70	
USA	New Jersey	260	
USA	New Mexico	54	
USA	New York	682	
USA	North Carolina	154	
USA	North Dakota	24	
USA	Ohio	215	
USA	Oklahoma	56	
USA	Oregon	196	
USA	Palau	1	
USA	Pennsylvania	357	
USA	Puerto Rico	87	
USA	Rhode Island	58	
USA	South Carolina	56	
USA	South Dakota	17	
USA	Tennessee	112	
USA	Texas	433	
USA	Utah	111	
USA	Vermont	62	
USA	Virginia	373	
USA	Washington	273	
USA	West Virginia	27	
USA	Wisconsin	184	
USA	Wyoming	20	
USA		8,769	73.2%
UZBEKISTAN		6	0.1%
VENEZUELA		20	0.2%
VIET NAM		14	0.1%
VIETNAM		20	0.2%
VIRGIN ISLANDS, U.S.		2	0.0%
YEMEN		4	0.0%
Grand Total:		11,984	

151 distinct countries represented.

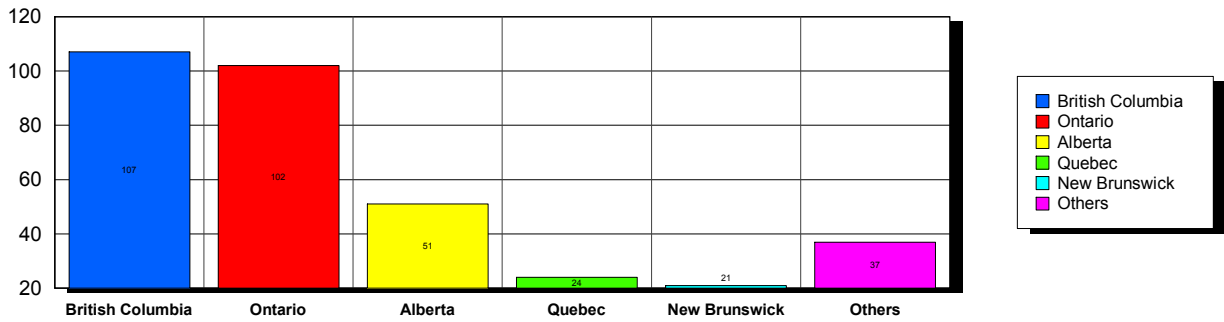
USA

Top 5 States per Country

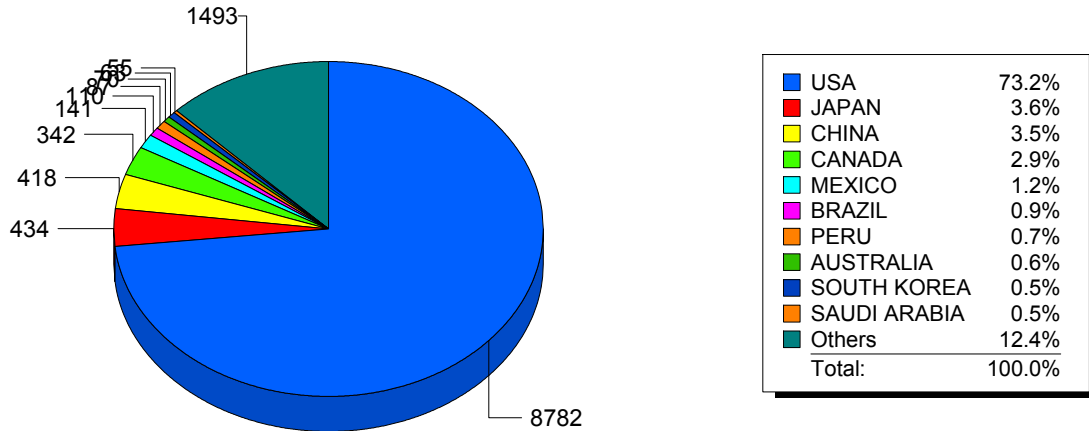


CANADA

Top 5 States per Country



Top 10 Countries



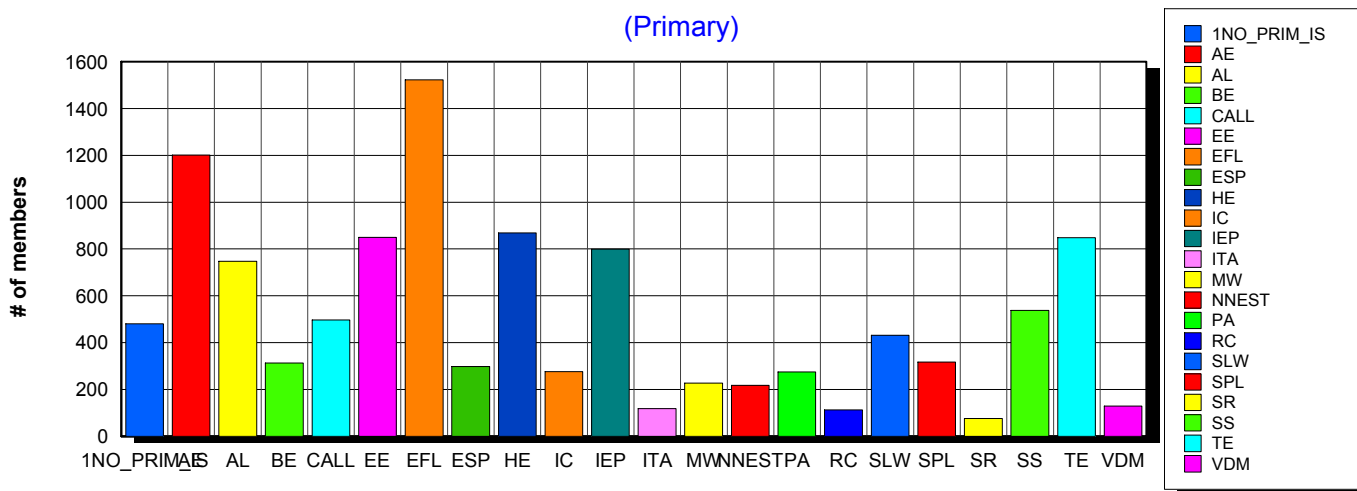
9/12/2011 **Basic statistics on Primary vs. other memberships in interest sections. For members paid through 8/31/2011 or later.**

			<i>Primary versus other</i>	
No Primary Interest Section	1.2%	488	480	8
Adult Education	7.1%	2,896	1,201	1,695
Applied Linguistics	6.2%	2,543	748	1,795
Bilingual Education	3.8%	1,575	313	1,262
Computer-Assisted Language Learning	5.4%	2,223	497	1,726
Elementary Education	4.6%	1,887	850	1,037
English as a Foreign Language	8.3%	3,398	1,522	1,876
English for Specific Purposes	4.5%	1,842	298	1,544
Higher Education	6.0%	2,479	868	1,611
Intercultural Communication	4.7%	1,925	276	1,649
Intensive English Programs	5.7%	2,326	799	1,527
International Teaching Assistants	2.5%	1,014	118	896
Materials Writers	3.5%	1,438	227	1,211
Nonnative English Speakers in TESOL	3.2%	1,327	217	1,110
Program Administration	3.3%	1,363	274	1,089
Refugee Concerns	2.3%	953	113	840
Second Language Writing	5.9%	2,404	431	1,973
Speech, Pronunciation, and Listening	5.3%	2,160	317	1,843
Social Responsibility	2.1%	860	76	784
Secondary Schools	3.7%	1,521	537	984
Teacher Education	7.1%	2,929	848	2,081
Video & Digital Media	3.7%	1,526	129	1,397
<i>11,162 distinct members</i>		Total # of IS memberships	41,077	11,139
			29,938	

The total count is the number of IS memberships total and may either be LESS or MORE than the actual number of individual members of TESOL. Due to open access to Interest Sections, these numbers may fluctuate considerably each month. For instance, one member may have selected four interest sections, while some members may belong to none.

Interest Sections

(Primary)

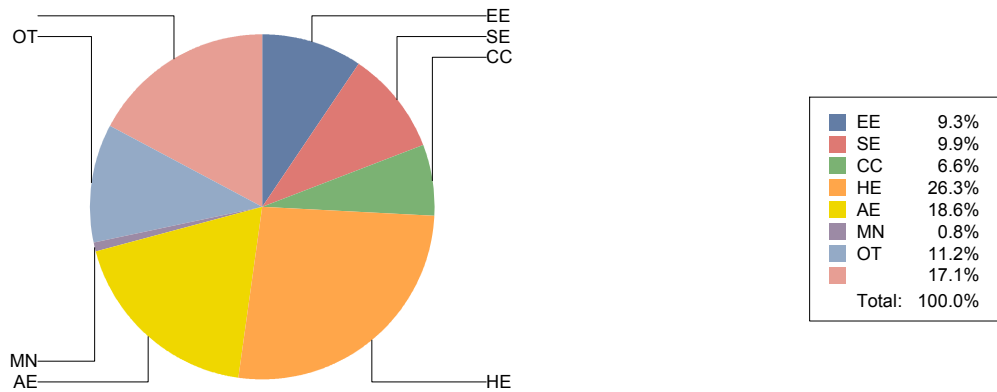


Basic Statistics on Area of Work (Members paid through >= 8/31/2011)

Elementary Education	EE	1,118	9.3%
Secondary Education	SE	1,189	9.9%
Community/2yr College	CC	788	6.6%
Postsecondary Education	HE	3,152	26.3%
Adult Education	AE	2,226	18.6%
Mainstream	MN	101	0.8%
Other	OT	1,346	11.2%
		2,049	17.1%
		11,969	

Only members who selected an area of work are included on this report. Other members may not have responded to this question and are excluded from the count.

Areas of Work



(Blanks indicate no response)

Statistics on Areas of Interest (Members paid through >= 8/31/2011)

<u>CODE</u>	<u>DESCRIPTION</u>	<u>TOTAL*</u>	<u>% of TOTAL*</u>
EFL	English as a foreign language	3,040	5%
CURRICULUM	Materials development/Curriculum	2,834	4%
SLA	Second language acquisition	2,815	4%
TE	Teacher education	2,720	4%
AL	Applied linguistics	2,546	4%
AE	Adult education	2,496	4%
IC	Multiculturalism/intercultural communications	2,495	4%
WRITING	Writing/composition	2,453	4%
CALL	Technology in education	2,400	4%
CONTENT	Content-based instruction	2,249	3%
HE	Higher education	2,193	3%
IEP	Intensive English programs	2,167	3%
PROFDEV	Professional development	2,154	3%
READING	Reading/literacy	2,078	3%
SP	Speaking/pronunciation	1,990	3%
GRAMMAR	Grammar	1,915	3%
ASSESS	Assessment/testing	1,895	3%
ESP	English for specific purposes	1,722	3%
RS	Research	1,555	2%
BE	Bilingual education	1,467	2%
DISTANCE	Distance learning/Online Education	1,342	2%
VOCAB	Vocabulary/Lexicon	1,315	2%
EE	Elementary/primary education	1,264	2%
PA	Program administration	1,237	2%
ISKILL	Integrated Skills	1,105	2%
SS	Secondary education	1,094	2%
SOCIAL	Social/global/political concerns	1,092	2%
LISTEN	Listening	1,079	2%
WORKPLACE	Workplace English instruction/Business English	1,071	2%
VI	Video and digital media	1,024	2%
COMMCOLL	Community college/technical ed	884	1%
LIT	Literature	792	1%
RC	Refugee concerns	764	1%
STANDARDS	Standards	739	1%
ITA	International teaching assistants	698	1%
LINGUISTICS	Theoretical Linguistics	675	1%
FAMILY	Community/family outreach	647	1%
EMPLOYMENT	Employment issues/Certification	575	1%
LDSN	Learning Disorders/Special Needs	545	1%
PUBLICPOLICY	Public policy	481	1%
MAINSTREAMING	Mainstreaming	454	1%
NNES	NNES/NES issues	451	1%
ACCRED	Accreditation	379	1%
ARTS	Arts/Media/Science/Math/Social Science	373	1%
STYLISTICS	Stylistics	156	0%

Sorted in order of prevalence.

** Note: Members are encouraged to choose multiple areas of interest and some members do not choose any areas of interest. The total number of distinct members (8,648) represented in this report is less than the total number of active members as indicated elsewhere in this report.*

Areas of interest are separate from official TESOL interest sections. Areas of interest represent distinct areas in which a member may be interested, rather than official entities in which a member is involved.

Areas of interest which have a very low count may be recent additions to the AOI list, or may reflect overall trends in membership.

Statistics on Areas of Expertise (Members paid through >= 8/31/2011)

<u>CODE</u>	<u>DESCRIPTION</u>	<u>TOTAL*</u>	<u>% of TOTAL*</u>
EFL	English as a foreign language	1,935	7%
AE	Adult education	1,549	6%
CURRICULUM	Materials development/Curriculum	1,380	5%
WRITING	Writing/composition	1,304	5%
AL	Applied linguistics	1,214	4%
IEP	Intensive English programs	1,173	4%
TE	Teacher education	1,162	4%
SLA	Second language acquisition	1,145	4%
HE	Higher education	1,089	4%
CONTENT	Content-based instruction	1,003	4%
GRAMMAR	Grammar	992	4%
IC	Multiculturalism/intercultural communications	885	3%
EE	Elementary/primary education	837	3%
CALL	Technology in education	809	3%
READING	Reading/literacy	791	3%
ESP	English for specific purposes	779	3%
SP	Speaking/pronunciation	761	3%
PROFDEV	Professional development	723	3%
ASSESS	Assessment/testing	695	2%
PA	Program administration	616	2%
SS	Secondary education	567	2%
BE	Bilingual education	565	2%
ISKILL	Integrated Skills	553	2%
COMMCOLL	Community college/technical ed	494	2%
DISTANCE	Distance learning/Online Education	479	2%
RS	Research	446	2%
WORKPLACE	Workplace English instruction/Business English	433	2%
LISTEN	Listening	403	1%
VOCAB	Vocabulary/Lexicon	363	1%
LIT	Literature	352	1%
SOCIAL	Social/global/political concerns	264	1%
VI	Video and digital media	242	1%
ITA	International teaching assistants	202	1%
ARTS	Arts/Media/Science/Math/Social Science	191	1%
FAMILY	Community/family outreach	187	1%
NNES	NNES/NES issues	178	1%
ACCRED	Accreditation	174	1%
STANDARDS	Standards	174	1%
LINGUISTICS	Theoretical Linguistics	153	1%
MAINSTREAMING	Mainstreaming	151	1%
RC	Refugee concerns	147	1%
LDSN	Learning Disorders/Special Needs	137	0%
EMPLOYMENT	Employment issues/Certification	117	0%
PUBLICPOLICY	Public policy	89	0%
STYLISTICS	Stylistics	34	0%

Sorted in order of prevalence.

** Note: Members are encouraged to choose multiple areas of expertise and some members do not choose any areas of expertise. The total number of distinct members (6,787) represented in this report is less than the total number of active members as indicated elsewhere in this report.*

Areas of Expertise are separate from official TESOL interest sections or Areas of Interest. Areas of expertise represent distinct areas in which a member may be experienced in, rather than official entities in which a member is involved.

Areas of interest which have a very low count may be recent additions to the AOI list, or may reflect overall trends in membership.