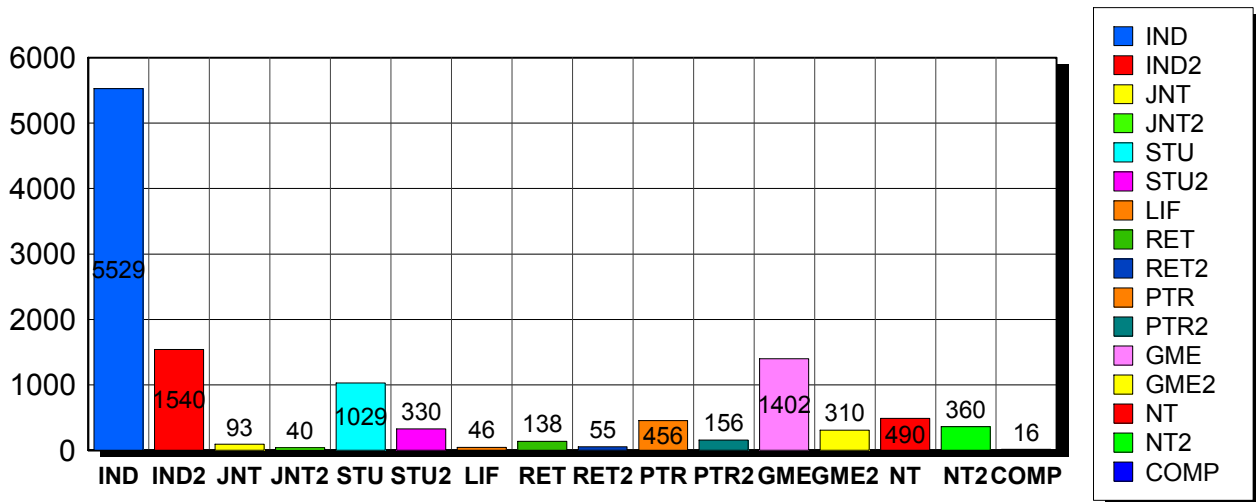


8/9/2011

Membership Statistics: Grand totals for basic membership, by member type

		<u># Memberships</u>	<u># Members</u>
IND	BASIC	5,529	5,529
IND2	BASIC	1,540	1,540
JNT	BASIC	93	186
JNT2	BASIC	40	80
STU	BASIC	1,029	1,029
STU2	BASIC	330	330
LIF	BASIC	46	46
RET	BASIC	138	138
RET2	BASIC	55	55
PTR	BASIC	456	456
PTR2	BASIC	156	156
GME	BASIC	1,402	1,402
GME2	BASIC	310	310
NT	BASIC	490	490
NT2	BASIC	360	360
COMP	BASIC	16	16
Grand Total:		11,990	12,123

Member Types



Note: in all general statistic reports, joint household memberships are treated as "one" member EXCEPT in the second column of this report, where joints are counted as two people, providing the most accurate count of the number of TESOL members.

This report is based on members paid through 7/31/2011 or later.

Country/State/Province	Total	
AFGHANISTAN	3	0.0%
ALBANIA	10	0.1%
ALGERIA	6	0.1%
ANGOLA	2	0.0%
ARGENTINA	31	0.3%
ARMENIA	6	0.1%
AUSTRALIA	72	0.6%
AUSTRIA	3	0.0%
AZERBAIJAN	5	0.0%
BAHRAIN	4	0.0%
BANGLADESH	24	0.2%
BELARUS	3	0.0%
BELGIUM	2	0.0%
BENIN	2	0.0%
BOLIVIA	11	0.1%
BOTSWANA	1	0.0%
BRAZIL	105	0.9%
BRUNEI DARUSSALAM	1	0.0%
BULGARIA	3	0.0%
BURKINA FASO	3	0.0%
CAMBODIA	7	0.1%
CAMEROON	12	0.1%
CANADA		
<i>CANADA</i>	<i>1</i>	
<i>CANADA</i> <i>Alberta</i>	<i>51</i>	
<i>CANADA</i> <i>British Columbia</i>	<i>106</i>	
<i>CANADA</i> <i>Manitoba</i>	<i>17</i>	
<i>CANADA</i> <i>New Brunswick</i>	<i>22</i>	
<i>CANADA</i> <i>Newfoundland</i>	<i>3</i>	
<i>CANADA</i> <i>Nova Scotia</i>	<i>7</i>	
<i>CANADA</i> <i>Ontario</i>	<i>103</i>	
<i>CANADA</i> <i>Quebec</i>	<i>24</i>	
<i>CANADA</i> <i>Saskatchewan</i>	<i>10</i>	
CANADA	344	2.9%
CAYMAN ISLANDS	1	0.0%
CENTRAL AFRICAN REPUBLIC	1	0.0%
CHILE	27	0.2%
CHINA	417	3.5%
COLOMBIA	39	0.3%
COSTA RICA	22	0.2%
COTE D'IVOIRE	1	0.0%
CROATIA	5	0.0%
CYPRUS	3	0.0%
CZECH REPUBLIC	6	0.1%
DENMARK	1	0.0%
DOMINICAN REPUBLIC	12	0.1%
ECUADOR	29	0.2%
EGYPT	25	0.2%
EL SALVADOR	5	0.0%
ESTONIA	1	0.0%
ETHIOPIA	2	0.0%
FINLAND	7	0.1%
FRANCE	8	0.1%
GEORGIA	5	0.0%
GERMANY	23	0.2%
GHANA	1	0.0%
GREECE	6	0.1%

GUAM	3	0.0%
GUATEMALA	16	0.1%
HAITI	18	0.2%
HONDURAS	5	0.0%
HONG KONG	13	0.1%
HONG KONG SAR CHINA	16	0.1%
HUNGARY	1	0.0%
INDIA	30	0.3%
INDONESIA	37	0.3%
IRAN	30	0.3%
IRAN, ISLAMIC REPUBLIC OF	3	0.0%
IRAQ	49	0.4%
IRELAND	2	0.0%
ISRAEL	17	0.1%
ITALY	13	0.1%
JAMAICA	1	0.0%
JAPAN	439	3.7%
JORDAN	5	0.0%
KAZAKHSTAN	13	0.1%
KENYA	1	0.0%
KOREA, REPUBLIC OF	33	0.3%
KOSOVO (UNMIK)	1	0.0%
KUWAIT	20	0.2%
KYRGYZSTAN	2	0.0%
LAOS	9	0.1%
LATVIA	1	0.0%
LEBANON	9	0.1%
LIBYA	5	0.0%
LITHUANIA	3	0.0%
MACAO	5	0.0%
MACEDONIA	3	0.0%
MADAGASCAR	7	0.1%
MALAYSIA	18	0.2%
MALDIVES	2	0.0%
MARSHALL ISLANDS	3	0.0%
MARTINIQUE	1	0.0%
MAURITIUS	1	0.0%
MEXICO	143	1.2%
MICRONESIA, FED STATES OF	1	0.0%
MOLDOVA, REPUBLIC OF	3	0.0%
MONGOLIA	20	0.2%
MOROCCO	22	0.2%
MOZAMBIQUE	1	0.0%
NAMIBIA	1	0.0%
NEPAL	2	0.0%
NETHERLANDS	6	0.1%
NEW ZEALAND	11	0.1%
NICARAGUA	2	0.0%
NIGER	1	0.0%
NIGERIA	1	0.0%
NORWAY	4	0.0%
OMAN	9	0.1%
PAKISTAN	11	0.1%
PALAU	5	0.0%
PALESTINIAN TERRITORY	2	0.0%
PANAMA	33	0.3%
PARAGUAY	3	0.0%
PEOPLES REP OF CHINA	4	0.0%
PERU	87	0.7%
PHILIPPINES	40	0.3%
POLAND	12	0.1%

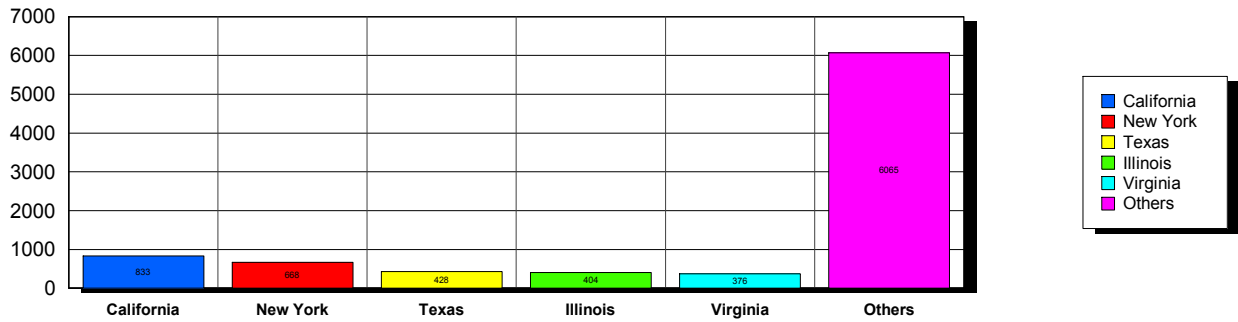
PORTUGAL		1	0.0%
OATAR		32	0.3%
ROMANIA		3	0.0%
RUSSIA		44	0.4%
RUSSIAN FEDERATION		12	0.1%
RWANDA		7	0.1%
SAO TOME AND PRINCIPE		1	0.0%
SAUDI ARABIA		57	0.5%
SENEGAL		9	0.1%
SERBIA		5	0.0%
SIERRA LEONE		1	0.0%
SINGAPORE		18	0.2%
SLOVAKIA		1	0.0%
SOUTH AFRICA		6	0.1%
SOUTH KOREA		61	0.5%
SPAIN		18	0.2%
SRI LANKA		1	0.0%
SUDAN		4	0.0%
SWAZILAND		1	0.0%
SWEDEN		4	0.0%
SWITZERLAND		9	0.1%
SYRIAN ARAB REPUBLIC		1	0.0%
TAIWAN		24	0.2%
TAIWAN ROC		45	0.4%
TAIWAN, PROVINCE OF CHINA		1	0.0%
TAJIKISTAN		1	0.0%
THAILAND		40	0.3%
TRINIDAD AND TOBAGO		4	0.0%
TUNISIA		5	0.0%
TURKEY		40	0.3%
TURKMENISTAN		2	0.0%
UGANDA		1	0.0%
UKRAINE		15	0.1%
UNITED ARAB EMIRATES		51	0.4%
UNITED KINGDOM		55	0.5%
URUGUAY		16	0.1%
USA			
<i>USA</i>		<i>24</i>	
<i>USA</i>	<i>Alabama</i>	<i>94</i>	
<i>USA</i>	<i>Alaska</i>	<i>24</i>	
<i>USA</i>	<i>American Embassy</i>	<i>22</i>	
<i>USA</i>	<i>Arizona</i>	<i>198</i>	
<i>USA</i>	<i>Arkansas</i>	<i>96</i>	
<i>USA</i>	<i>Armed Forces</i>	<i>9</i>	
<i>USA</i>	<i>Armed Frces Americas</i>	<i>2</i>	
<i>USA</i>	<i>British Columbia</i>	<i>1</i>	
<i>USA</i>	<i>California</i>	<i>832</i>	
<i>USA</i>	<i>Colorado</i>	<i>162</i>	
<i>USA</i>	<i>Connecticut</i>	<i>157</i>	
<i>USA</i>	<i>Delaware</i>	<i>35</i>	
<i>USA</i>	<i>District of Columbia</i>	<i>185</i>	
<i>USA</i>	<i>Florida</i>	<i>372</i>	
<i>USA</i>	<i>Georgia</i>	<i>237</i>	
<i>USA</i>	<i>Guam</i>	<i>6</i>	
<i>USA</i>	<i>Hawaii</i>	<i>67</i>	
<i>USA</i>	<i>Idaho</i>	<i>30</i>	
<i>USA</i>	<i>Illinois</i>	<i>403</i>	
<i>USA</i>	<i>Indiana</i>	<i>170</i>	
<i>USA</i>	<i>Iowa</i>	<i>105</i>	
<i>USA</i>	<i>Kansas</i>	<i>93</i>	

USA	Kentucky	70	
USA	Louisiana	96	
USA	Maine	38	
USA	Marshall Islands	1	
USA	Maryland	305	
USA	Massachusetts	370	
USA	Michigan	206	
USA	Minnesota	156	
USA	Mississippi	67	
USA	Missouri	153	
USA	Montana	17	
USA	Nebraska	37	
USA	Nevada	62	
USA	New Hampshire	71	
USA	New Jersey	260	
USA	New Mexico	55	
USA	New York	670	
USA	North Carolina	154	
USA	North Dakota	24	
USA	Ohio	216	
USA	Oklahoma	56	
USA	Oregon	194	
USA	Palau	1	
USA	Pennsylvania	354	
USA	Puerto Rico	86	
USA	Rhode Island	58	
USA	South Carolina	57	
USA	South Dakota	16	
USA	Tennessee	111	
USA	Texas	429	
USA	Utah	112	
USA	Vermont	66	
USA	Virginia	376	
USA	Washington	265	
USA	West Virginia	27	
USA	Wisconsin	186	
USA	Wyoming	20	
USA		8,766	73.1%
UZBEKISTAN		5	0.0%
VENEZUELA		21	0.2%
VIET NAM		14	0.1%
VIETNAM		20	0.2%
VIRGIN ISLANDS, U.S.		2	0.0%
YEMEN		4	0.0%
Grand Total:		11,994	

150 distinct countries represented.

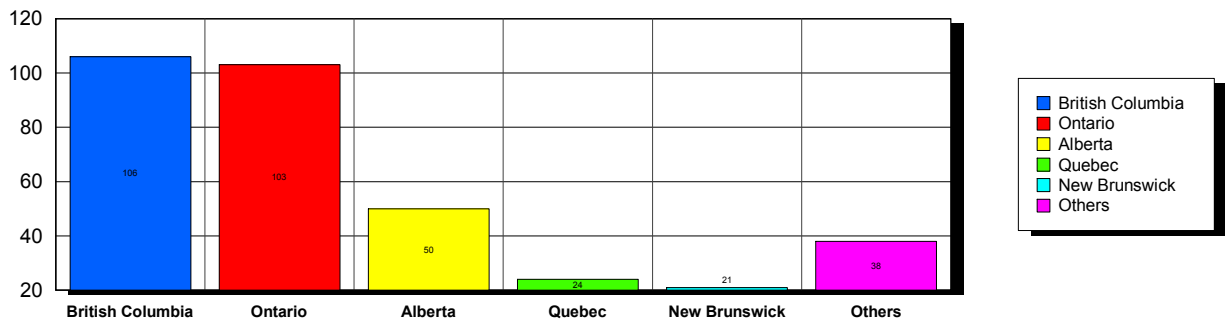
USA

Top 5 States per Country

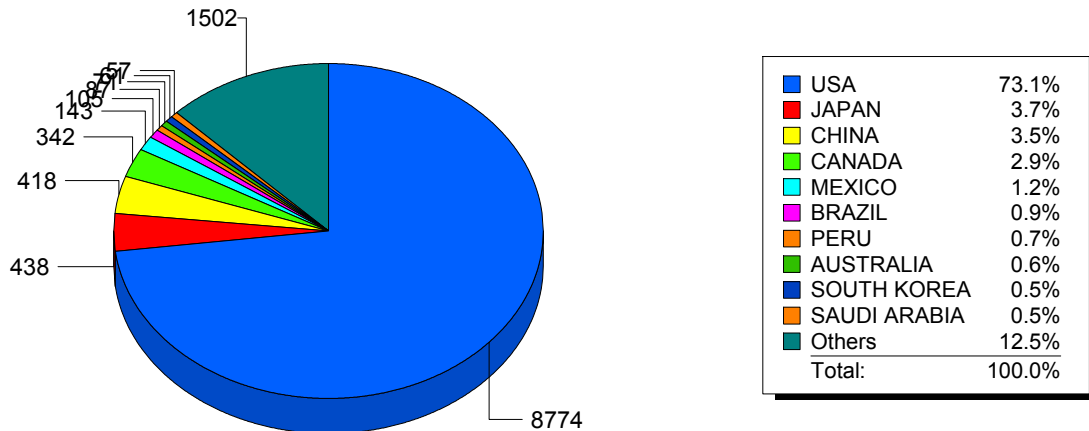


CANADA

Top 5 States per Country



Top 10 Countries



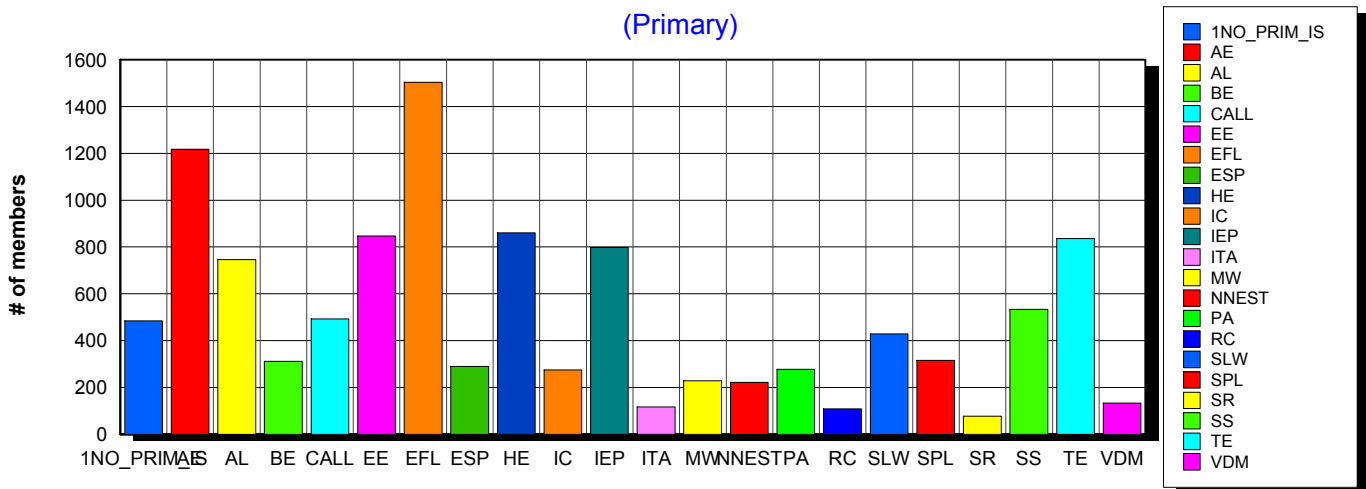
Basic statistics on Primary vs. other memberships in interest sections. For members paid through 7/31/2011 or later.

			<i>Primary versus other</i>	
No Primary Interest Section	1.2%	492	484	8
Adult Education	7.1%	2,890	1,217	1,673
Applied Linguistics	6.2%	2,521	746	1,775
Bilingual Education	3.8%	1,564	311	1,253
Computer-Assisted Language Learning	5.4%	2,201	493	1,708
Elementary Education	4.6%	1,873	847	1,026
English as a Foreign Language	8.3%	3,379	1,504	1,875
English for Specific Purposes	4.4%	1,812	289	1,523
Higher Education	6.0%	2,462	861	1,601
Intercultural Communication	4.7%	1,901	274	1,627
Intensive English Programs	5.7%	2,309	798	1,511
International Teaching Assistants	2.5%	1,013	117	896
Materials Writers	3.5%	1,425	228	1,197
Nonnative English Speakers in TESOL	3.3%	1,326	221	1,105
Program Administration	3.3%	1,361	277	1,084
Refugee Concerns	2.3%	949	108	841
Second Language Writing	5.9%	2,387	429	1,958
Speech, Pronunciation, and Listening	5.3%	2,147	316	1,831
Social Responsibility	2.1%	855	77	778
Secondary Schools	3.7%	1,511	533	978
Teacher Education	7.1%	2,897	836	2,061
Video & Digital Media	3.7%	1,509	133	1,376
<i>11,122 distinct members</i>		Total # of IS memberships	40,784	11,099
			29,685	

The total count is the number of IS memberships total and may either be LESS or MORE than the actual number of individual members of TESOL. Due to open access to Interest Sections, these numbers may fluctuate considerably each month. For instance, one member may have selected four interest sections, while some members may belong to none.

Interest Sections

(Primary)

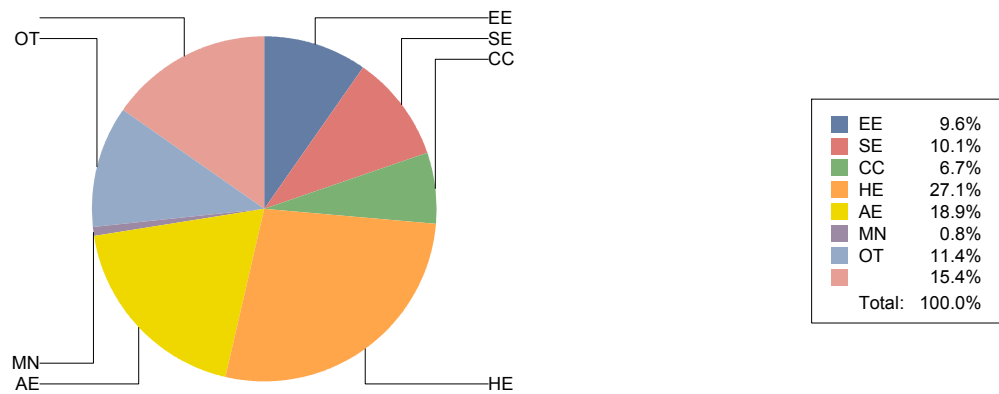


Basic Statistics on Area of Work (Members paid through >= 7/31/2011)

Elementary Education	EE	1,125	9.6%
Secondary Education	SE	1,184	10.1%
Community/2yr College	CC	790	6.7%
Postsecondary Education	HE	3,172	27.1%
Adult Education	AE	2,208	18.9%
Mainstream	MN	97	0.8%
Other	OT	1,333	11.4%
		1,800	15.4%
		11,709	

Only members who selected an area of work are included on this report. Other members may not have responded to this question and are excluded from the count.

Areas of Work



(Blanks indicate no response)

Statistics on Areas of Interest (Members paid through >= 7/31/2011)

<u>CODE</u>	<u>DESCRIPTION</u>	<u>TOTAL*</u>	<u>% of TOTAL*</u>
EFL	English as a foreign language	3,056	5%
CURRICULUM	Materials development/Curriculum	2,822	4%
SLA	Second language acquisition	2,796	4%
TE	Teacher education	2,726	4%
AL	Applied linguistics	2,535	4%
IC	Multiculturalism/intercultural communications	2,499	4%
AE	Adult education	2,497	4%
WRITING	Writing/composition	2,451	4%
CALL	Technology in education	2,395	4%
CONTENT	Content-based instruction	2,232	3%
HE	Higher education	2,191	3%
PROFDEV	Professional development	2,156	3%
IEP	Intensive English programs	2,147	3%
READING	Reading/literacy	2,063	3%
SP	Speaking/pronunciation	2,006	3%
GRAMMAR	Grammar	1,901	3%
ASSESS	Assessment/testing	1,891	3%
ESP	English for specific purposes	1,716	3%
RS	Research	1,545	2%
BE	Bilingual education	1,482	2%
DISTANCE	Distance learning/Online Education	1,332	2%
VOCAB	Vocabulary/Lexicon	1,310	2%
EE	Elementary/primary education	1,258	2%
PA	Program administration	1,237	2%
ISKILL	Integrated Skills	1,093	2%
SOCIAL	Social/global/political concerns	1,087	2%
SS	Secondary education	1,085	2%
WORKPLACE	Workplace English instruction/Business English	1,079	2%
LISTEN	Listening	1,077	2%
VI	Video and digital media	1,019	2%
COMMCOLL	Community college/technical ed	876	1%
LIT	Literature	792	1%
RC	Refugee concerns	764	1%
STANDARDS	Standards	738	1%
ITA	International teaching assistants	692	1%
LINGUISTICS	Theoretical Linguistics	674	1%
FAMILY	Community/family outreach	642	1%
EMPLOYMENT	Employment issues/Certification	569	1%
LDSN	Learning Disorders/Special Needs	542	1%
PUBLICPOLICY	Public policy	476	1%
MAINSTREAMING	Mainstreaming	455	1%
NNES	NNES/NES issues	454	1%
ACCRED	Accreditation	383	1%
ARTS	Arts/Media/Science/Math/Social Science	358	1%
STYLISTICS	Stylistics	154	0%

Sorted in order of prevalence.

** Note: Members are encouraged to choose multiple areas of interest and some members do not choose any areas of interest. The total number of distinct members (8,661) represented in this report is less than the total number of active members as indicated elsewhere in this report.*

Areas of interest are separate from official TESOL interest sections. Areas of interest represent distinct areas in which a member may be interested, rather than official entities in which a member is involved.

Areas of interest which have a very low count may be recent additions to the AOI list, or may reflect overall trends in membership.

Statistics on Areas of Expertise (Members paid through >= 7/31/2011)

<u>CODE</u>	<u>DESCRIPTION</u>	<u>TOTAL*</u>	<u>% of TOTAL*</u>
EFL	English as a foreign language	1,931	7%
AE	Adult education	1,545	6%
CURRICULUM	Materials development/Curriculum	1,366	5%
WRITING	Writing/composition	1,288	5%
AL	Applied linguistics	1,213	4%
IEP	Intensive English programs	1,166	4%
TE	Teacher education	1,150	4%
SLA	Second language acquisition	1,138	4%
HE	Higher education	1,075	4%
CONTENT	Content-based instruction	999	4%
GRAMMAR	Grammar	994	4%
IC	Multiculturalism/intercultural communications	877	3%
EE	Elementary/primary education	841	3%
CALL	Technology in education	805	3%
READING	Reading/literacy	779	3%
ESP	English for specific purposes	778	3%
SP	Speaking/pronunciation	760	3%
PROFDEV	Professional development	715	3%
ASSESS	Assessment/testing	693	2%
PA	Program administration	609	2%
SS	Secondary education	567	2%
BE	Bilingual education	559	2%
ISKILL	Integrated Skills	543	2%
COMMCOLL	Community college/technical ed	486	2%
DISTANCE	Distance learning/Online Education	476	2%
RS	Research	444	2%
WORKPLACE	Workplace English instruction/Business English	433	2%
LISTEN	Listening	399	1%
VOCAB	Vocabulary/Lexicon	361	1%
LIT	Literature	353	1%
SOCIAL	Social/global/political concerns	261	1%
VI	Video and digital media	238	1%
ITA	International teaching assistants	202	1%
FAMILY	Community/family outreach	189	1%
ARTS	Arts/Media/Science/Math/Social Science	187	1%
NNES	NNES/NES issues	180	1%
STANDARDS	Standards	175	1%
ACCRED	Accreditation	173	1%
LINGUISTICS	Theoretical Linguistics	153	1%
MAINSTREAMING	Mainstreaming	148	1%
RC	Refugee concerns	147	1%
LDSN	Learning Disorders/Special Needs	139	1%
EMPLOYMENT	Employment issues/Certification	122	0%
PUBLICPOLICY	Public policy	89	0%
STYLISTICS	Stylistics	33	0%

Sorted in order of prevalence.

** Note: Members are encouraged to choose multiple areas of expertise and some members do not choose any areas of expertise. The total number of distinct members (6,792) represented in this report is less than the total number of active members as indicated elsewhere in this report.*

Areas of Expertise are separate from official TESOL interest sections or Areas of Interest. Areas of expertise represent distinct areas in which a member may be experienced in, rather than official entities in which a member is involved.

Areas of interest which have a very low count may be recent additions to the AOI list, or may reflect overall trends in membership.